



UNITED STATES ENVIRONMENTAL PROTECTION AGENCY
WASHINGTON, DC 20460

OFFICE OF CHEMICAL SAFETY
AND POLLUTION PREVENTION

April 14, 2016

Jean Claude Marcelin
Manager, Regulatory Affairs EPA Services
Professional Disposables International, Inc.
100 Philips Parkway
Montvale, NJ
07645

Subject: Notification per PRN 98-10 – Add two alternate brand names, revise the following Icons **“Disinfecting in 1 minute”**, **“Do not Flush”**, and **“not a skin or Baby Wipe”**
Product Name: Wonder Woman Formula B Germicidal Wipes
EPA Registration Number: 9480-12
Application Date: March 21, 2016
Decision Number: 515539

Dear Ms. Marcelin:

The Agency is in receipt of your Application for Pesticide Notification under Pesticide Registration Notice (PRN) 98-10 for the above referenced product. The Antimicrobials Division (AD) has conducted a review of this request for its applicability under PRN 98-10 and finds that the action requested falls within the scope of PRN 98-10.

The label submitted with the application has been stamped “Notification” and will be placed in our records.

Should you wish to add/retain a reference to the company’s website on your label, then please be aware that the website becomes labeling under the Federal Insecticide Fungicide and Rodenticide Act and is subject to review by the Agency. If the website is false or misleading, the product would be misbranded and unlawful to sell or distribute under FIFRA section 12(a)(1)(E). 40 CFR 156.10(a)(5) list examples of statements EPA may consider false or misleading. In addition, regardless of whether a website is referenced on your product’s label, claims made on the website may not substantially differ from those claims approved through the registration process. Therefore, should the Agency find or if it is brought to our attention that a website contains false or misleading statements or claims substantially differing from the EPA approved registration, the website will be referred to the EPA’s Office of Enforcement and Compliance.

The following alternate brand names have been added to the product record:

- Sani-Cloth[®] Prime Germicidal Disposable Wipe
- PDI Sani-Cloth[®] Prime Germicidal Disposable Wipe

Page 2 of 2
EPA Reg. No.
9480-12 Decision No.
515539

If you have any questions, you may contact Zebora Johnson at (703) 308-7080 or via email at johnson.zebora@epa.gov.

Sincerely,

A handwritten signature in blue ink, appearing to read "Julie Chao".

Julie Chao, Product Manager 33
Regulatory Management Branch I
Antimicrobials Division (7510P)
Office of Pesticide Programs

WONDER WOMAN FORMULA B GERMICIDAL WIPES
GERMICIDAL DISPOSABLE CLOTH

Alternate brand names: Sani-Cloth® Prime Germicidal Disposable Wipe
PDI Sani-Cloth® Prime Germicidal Disposable Wipe

ACTIVE INGREDIENTS:

Didecyl Dimethyl Ammonium Chloride.....	0.61%
Ethyl Alcohol.....	27.30%
Isopropyl Alcohol.....	28.70%
<u>OTHER INGREDIENTS</u>	<u>43.39%</u>
TOTAL	100.00%

[Does not include the weight of the [cloth] [towelette] [or] [wipe]]

NOTIFICATION

9480-12

The applicant has certified that no changes, other than those reported to the Agency have been made to the labeling. The Agency acknowledges this notification by letter dated:

04/14/2016

KEEP OUT OF REACH OF CHILDREN
WARNING

See back [side] panel for additional precautionary statements

NET CONTENTS [*and/or* Net Wt.] _____ oz (g) [or lbs. (kg)]

_ # OF CLOTHS [*SIZE of each cloth*]

EPA Reg. No.: 9480-12

EPA Est. No. : 9480-NY-1

or

EPA Est. No. A=9480-NY-1, B=72956-WI-1, C=72956-AR-1 [*or others*]

Alpha character will precede batch code on product

[Manufactured by [or for]]:

Professional Disposables International, Inc.

Two Nice-Pak Park, Orangeburg, NY 10962-1376

[For information call: [*phone number to be inserted*]]

[Made in USA] [of Domestic and [Foreign][Imported] Materials]

THE INFORMATION IN BOX IS NOT PART OF THE LABELING

[] - Statements in brackets are optional or instructional. Italicized words in brackets are not included

A footnote can be used to list organisms. Bacteria and virus can be separated into footnotes 1 and 2 if desired.

When organisms are listed next to a claim, the organisms may be listed in a footnote instead of directly next to the claim

+All pesticidal "germ" claims must be linked to bacteria (minimum: Salmonella and Staph) and at least one virus. For example: Front panel: "Kills germs*" Back panel: "**Kills Salmonella enterica, Staphylococcus aureus, Herpes Simplex Type 2, and Influenza A/Hong Kong"

Sequence and placement of phrases is optional unless specified in 40 CFR 156.10.

Capitalization, plurals or singular, bold and italics are all variable unless specified in 40 CFR

The terms "Wipe(s)", "Towel(s)", "Towelette(s)" and "Cloth(s)" can be used interchangeably throughout except for the product primary brand name which can be only changed by notification or amendment.

First Aid:

Call a poison control center or doctor for treatment advice. Have the product container or label with you when calling a poison control center or healthcare professional, or going for treatment.

If in eyes:

-Hold eye open and rinse slowly and gently with water for 15-20 minutes. Remove contact lenses, if present, after the first 5 minutes, then continue rinsing.

[For additional information in case of emergency call toll free [phone number to be inserted]].

Precautionary Statements

Hazards to Humans and Domestic Animals

Warning. Causes substantial but temporary eye damage. Do not get in eyes or on clothing. Avoid contact with skin. Wash hands thoroughly with soap and water after handling and before eating, drinking, chewing gum, using tobacco, or using the toilet. Remove and wash contaminated clothing before reuse.

Physical or chemical hazard

Flammable. Keep away from heat and open flame.

[Use one of the following as applicable to type of container.]

[To Dispense TOWELETTES] [or WIPES] [or TOWELS] [or CLOTHS]:

CONTAINER/CANISTER

Remove lid [and discard inner seal] [from] [container or canister]. Find center of roll, remove first wipe for use, twist corner of next wipe into a point and thread through the hole in the [container or canister] lid. Pull through about one inch. Replace lid. Dispense remaining wipes as necessary by pulling out at an angle. When not in use keep [center cap of] lid closed to prevent moisture loss.

TRAVEL PACK:

Peel back label slowly. Pull out wipes as needed and reseal label. Unfold wipe.

BOX:

Open along perforations as indicated. Remove packets as needed.

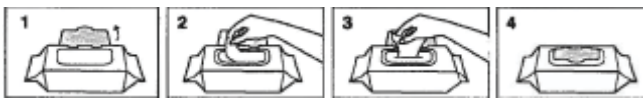
PACKET/PACKAGE:

Tear open packet [package]. Unfold wipe and use as directed. Discard after single use.

[SOLO® PAK] [Portable Pack]:

Open package lid. Completely remove inner seal. Pull out wipe. (The next wipe pops up automatically.)

Snap lid closed after use to retain moisture.



**DO NOT FLUSH • STORE AT ROOM TEMPERATURE
DISPOSE OF USED WIPES IN TRASH RECEPTACLE • KEEP SOLO® LID CLOSED WHEN NOT IN USE
SOLO® is a registered trademark of Nice-Pak Products, Inc.**

THE INFORMATION IN BOX IS NOT PART OF THE LABELING

[] - Statements in brackets are optional or instructional. Italicized words in brackets are not included
A footnote can be used to list organisms. Bacteria and virus can be separated into footnotes 1 and 2 if desired.
When organisms are listed next to a claim, the organisms may be listed in a footnote instead of directly next to the claim
+All pesticidal "germ" claims must be linked to bacteria (minimum: Salmonella and Staph) and at least one virus. For example: Front panel: "Kills germs*" Back panel: "**Kills Salmonella enterica, Staphylococcus aureus, Herpes Simplex Type 2, and Influenza A/Hong Kong"
Sequence and placement of phrases is optional unless specified in 40 CFR 156.10.
Capitalization, plurals or singular, bold and italics are all variable unless specified in 40 CFR
The terms "Wipe(s)", "Towel(s)", "Towelette(s)" and "Cloth(s)" can be used Interchangeably throughout except for the product primary brand name which can be only changed by notification or amendment.

REFILL [PACKET]

This refill package is made for use only in a [product name] [container or canister]; do not use this product in a [container or canister] for another product. Do not use the refill wipes in a container that is cracked or broken. Discard the cracked or broken container in accordance with the container disposal instructions on the label.

[Option 1]

Remove [entire] lid from [container or canister]. Tear open refill [package] at [notch] [mark] [arrow] and place [wipe] roll in empty [container or canister]. Follow information on [container or canister] to dispense wipes.

[Option 2]

Remove [entire] lid from [container or canister]. Tear open refill [package] at [notch] [mark] [arrow]. Place [entire] refill package of wipes in empty [container or canister]. Follow information on [container or canister] to dispense wipes.

GENERIC:

Open lid. Pull out wipe. Close lid tightly.

Bucket [or pail or container] [numbers optional]

1. Remove the lid from the [pail or bucket or container.]
2. [Press] open the dispenser at center of the lid.
3. Open the refill pack then place in [pail or bucket or container].
4. Locate the first wipe at the center of the roll.
5. Feed the first wipe though the dispensing orifice.
6. Reapply the lid to the [pail or bucket or container.]
7. Dispense the wipe.

For the refills:

1. Remove the lid from the [pail or bucket or container.]
2. Remove the empty refill pack material from the [pail or bucket or container.]
3. [Press] open the dispenser at center of the lid.
4. Open the refill pack then place in [pail or bucket or container].
5. Locate the first wipe at the center of the roll.
6. Feed the first wipe though the dispensing orifice.
7. Reapply the lid to the pail.
8. Dispense the wipe.

THE INFORMATION IN BOX IS NOT PART OF THE LABELING

[] - Statements in brackets are optional or instructional. Italicized words in brackets are not included

A footnote can be used to list organisms. Bacteria and virus can be separated into footnotes 1 and 2 if desired.

When organisms are listed next to a claim, the organisms may be listed in a footnote instead of directly next to the claim

+All pesticidal "germ" claims must be linked to bacteria (minimum: Salmonella and Staph) and at least one virus. For example: Front panel: "Kills germs*" Back panel: "**Kills Salmonella enterica, Staphylococcus aureus, Herpes Simplex Type 2, and Influenza A/Hong Kong"

Sequence and placement of phrases is optional unless specified in 40 CFR 156.10.

Capitalization, plurals or singular, bold and italics are all variable unless specified in 40 CFR

The terms "Wipe(s)", "Towel(s)", "Towelette(s)" and "Cloth(s)" can be used interchangeably throughout except for the product primary brand name which can be only changed by notification or amendment.

DIRECTIONS FOR USE

It is a violation of Federal law to use this product in a manner inconsistent with its labeling.

TO DISINFECT [CLEAN] [AND DEODORIZE]: Unfold a clean wipe and thoroughly wet surface. Allow treated surface to remain wet for one (1) minute [or 60 seconds]. Let air dry. [A potable water rinse is required for food contact surfaces.] If present, remove gross filth and heavy soil loads prior to disinfecting.

[The following sets of directions are optional and for hospital/medical facility use only:]

Tuberculosis (TB): This product is effective against *Mycobacterium bovis* BCG (Tuberculosis) in one minute at 68°F (20°C). Unfold a clean wipe and thoroughly wet surface. Allow treated surface to remain wet for one minute [or 60 seconds]. Let air dry. [A potable water rinse is required for food contact surfaces.] If present, remove gross filth and heavy soil loads prior to disinfecting.

and/or

Ultrasound transducers and probes: For use to clean [and decontaminate] external surfaces of ultrasound transducers, scopes and [or] probes only prior to high-level disinfection (HLD).

To clean [and decontaminate] prior to high-level disinfection [HLD]: Pre-clean gel from external surface of ultrasound transducer, scope and [or] probe by using a clean washcloth or germicidal wipe. Then, follow device manufacturer instructions for HLD.

†KILLS HIV-1 (AIDS VIRUS), HEPATITIS B VIRUS (HBV) AND HEPATITIS C VIRUS (HCV) ON THE PRE-CLEANED ENVIRONMENTAL SURFACES/OBJECTS AND PRE-CLEANED EXTERNAL SURFACES OF ULTRASOUND TRANSDUCERS AND PROBES PREVIOUSLY SOILED WITH BLOOD/BODY FLUIDS in 1 minute at room temperature (68°-77°F) or (20°- 25°C) in healthcare or other settings in which there is an expected likelihood of soiling of inanimate surfaces/objects with blood or body fluids, and in which the surfaces/objects likely to be soiled with blood or body fluids can be associated with the potential for transmission of Human Immunodeficiency Virus Type 1 (HIV-1) (associated with AIDS), Hepatitis B Virus (HBV) and Hepatitis C Virus (HCV).

†SPECIAL INSTRUCTIONS FOR CLEANING AND DECONTAMINATION AGAINST HIV-1, HEPATITIS B VIRUS (HBV) AND HEPATITIS C VIRUS (HCV) OF SURFACES/OBJECTS SOILED WITH BLOOD/BODY FLUIDS:

Personal protection: When handling HIV-1 (AIDS Virus), HBV or HCV infected blood or body fluids; wear disposable protective gloves, protective gowns, masks and eye coverings, per facility protocol.

Cleaning procedure: All blood and other body fluids must be thoroughly cleaned from surfaces and objects before disinfection by the germicidal wipe.

Disposal of infectious materials: Used wipe, blood and other body fluids should be disposed of according to local regulation for infectious waste disposal.

Contact time: Use second germicidal wipe to thoroughly wet surface. Allow surface to remain wet 1 minute, let air dry.

This product is not to be used as a terminal sterilant/high level disinfectant on any surface or instrument that (1) is introduced directly into the human body, either into or in contact with the bloodstream or normally sterile areas of the body, or (2) contacts intact mucous membranes but which does not ordinarily penetrate the blood barrier or otherwise enter normally sterile areas of the body. This product may be used to pre-clean or decontaminate critical or semi-critical medical devices prior to sterilization or high level disinfection.]

THE INFORMATION IN BOX IS NOT PART OF THE LABELING

[] - Statements in brackets are optional or instructional. Italicized words in brackets are not included

A footnote can be used to list organisms. Bacteria and virus can be separated into footnotes 1 and 2 if desired.

When organisms are listed next to a claim, the organisms may be listed in a footnote instead of directly next to the claim

+All pesticidal "germ" claims must be linked to bacteria (minimum: Salmonella and Staph) and at least one virus. For example: Front panel: "Kills germs*" Back panel: "**Kills Salmonella enterica, Staphylococcus aureus, Herpes Simplex Type 2, and Influenza A/Hong Kong"

Sequence and placement of phrases is optional unless specified in 40 CFR 156.10.

Capitalization, plurals or singular, bold and italics are all variable unless specified in 40 CFR

The terms "Wipe(s)", "Towel(s)", "Towelette(s)" and "Cloth(s)" can be used interchangeably throughout except for the product primary brand name which can be only changed by notification or amendment.

[Use storage/disposal statement A if canister, tub, bucket, pail or refill dispenser directions used. Use storage/disposal statement B if travel pack, Solo® Pak, portable pack, soft pack, pouch, or [refill or [bulk]] packet/package] directions used.]

STORAGE AND DISPOSAL

Do not contaminate water, food, or feed by storage and disposal. [Statement not required for residential or household use products.]

[Statement A:]

Storage: Do not store near heat or open flame. When not in use keep center cap of lid closed to prevent moisture loss.
Towelette Disposal: Do not reuse towelette. Dispose of used towelette in trash. Do not flush in toilet. **[Dispenser or Container or Package] Disposal:** Nonrefillable container. Do not reuse or refill this container. [Rinse and] Offer for recycling. If recycling is not available, put in trash collection.
[If refillable dispenser is being used, substitute the following: **Refill [Dispenser or Container or Package] Disposal:** Rinse cracked or broken containers and offer for recycling. If recycling is not available, discard in trash.]

[Statement B:]

Storage: Do not store near heat or open flame. **Towelette Disposal:** Do not reuse towelette. Dispose of used towelette in trash. Do not flush in toilet. **[Dispenser or Container or Package] Disposal:** Put empty travel pack [or Solo® Pak or Portable Pack or [refill] packet [or packaging]] in trash collection.

Areas of Use:

Hospital and Healthcare Settings: Ambulances, Ambulatory Surgical Centers (ASC), Anesthesia, CAT Labs, CCU, Central Supply, Clinics, Dental Offices, Dialysis Clinics, Doctors Offices, Donation Centers [blood][plasma][semen][milk][apheresis], Emergency Medical Settings, Emergency Rooms, E.R., Emergency Vehicles, Eye Surgical Centers, Healthcare Settings, Health Care Facilities, Home Health Care, Hospices, Hospitals, ICU, Isolation Areas, Laboratory, Laundry rooms, Long Term Care Centers, Medical Intensive Care Units (MICU), Neonatal Intensive Care Units (NICU), Newborn nursery, Nursing homes, Operating Rooms (OR), Oncology Facilities, Ophthalmic Offices, Orthopedics, Out-Patient Surgical Centers (OPSC), Patient Care Areas, Pediatrics, Pediatric Intensive Care Units (PICU), Physical therapy, Physician's offices, Radiology, Recovery Rooms, Rehabilitation, Respiratory therapy, Skilled Nursing Facility, Surgery, Surgery Intensive Care Unit (SICU), Surgical Centers, Transport vehicles, Urgent Care Centers, and X-Ray.

and/or

Critical Care Areas: CCU, Emergency Rooms, E.R., ICU, Medical Intensive Care Units (MICU), Neonatal Intensive Care Units (NICU), Operating Rooms, Post-Operative Care Unit (PACU), Pediatric Intensive Care Units (PICU), Surgery and Surgical Intensive Care Unit (SICU).

and

Hospital, Healthcare, and Critical Care Use Sites: May be used on hard nonporous surfaces of: ambulance equipment surfaces; bed railings; bladder scan; blood glucose meters; blood pressure cuffs; cabinets; cardiac gym equipment; carts; chairs; cardiac monitors; counters; defibrillators; dental chairs; dental countertops; dental unit instrument trays; dialyzers; dopplers; electronic thermometers; endodontic equipment such as apex locators; exam tables; gurneys; infant incubators [interior and exterior surfaces of]; infant warmers [interior and exterior surfaces of]; isolettes; IV poles; IV pumps; laboratory equipment and surfaces; loupes; operating room tables and lights; operatory light switches; Ophthalmoscopes; Oscopes; oxygen hoods; physical therapy (PT) equipment surfaces; patient lift equipment; pulse oximeter; radiology equipment; slit lamps; spine back boards; stethoscopes; stretchers; stools; tables; telemetry equipment; telephones; toilet seats; tympanic thermometers; wheelchairs; workstations on wheels (WOW) and hard nonporous outside surfaces of: amalgamators and dental curing lights; anesthesia machines and respiratory therapy equipment; apheresis machines, diagnostic equipment, dialysis machines; patient monitoring equipment, patient support and delivery equipment, pulp testers and motors; toilets; ultrasound monitors; and ultrasound transducers and probes;

THE INFORMATION IN BOX IS NOT PART OF THE LABELING

[] - Statements in brackets are optional or instructional. Italicized words in brackets are not included

A footnote can be used to list organisms. Bacteria and virus can be separated into footnotes 1 and 2 if desired.

When organisms are listed next to a claim, the organisms may be listed in a footnote instead of directly next to the claim

+All pesticidal "germ" claims must be linked to bacteria (minimum: Salmonella and Staph) and at least one virus. For example: Front panel: "Kills germs*" Back panel: "**Kills Salmonella enterica, Staphylococcus aureus, Herpes Simplex Type 2, and Influenza A/Hong Kong"

Sequence and placement of phrases is optional unless specified in 40 CFR 156.10.

Capitalization, plurals or singular, bold and italics are all variable unless specified in 40 CFR

The terms "Wipe(s)", "Towel(s)", "Towelette(s)" and "Cloth(s)" can be used interchangeably throughout except for the product primary brand name which can be only changed by notification or amendment.

Grocery Stores or Shopping Centers or Supermarkets or Delicatessens: Disinfects grocery cart handles and grocery cart child seats. Disinfects shopping cart handles and child seats.

Nursery or Daycare Centers: Bassinets [interior and exterior surfaces of], changing tables, cribs, diaper changing stations, diaper pails, infant/child care equipment surfaces, trash cans, toys and other hard, nonporous surfaces listed on this label.

Bathroom[s] or Public Restrooms: Basins, [bath]tubs, bathroom fixtures, cabinets, countertops, doorknobs, faucet[s], handles, hampers, handrails, shower[s] [stalls], showers, sinks, glazed tiled walls, glazed tiles, toilet [handle] [rim] [seats] [tank] [and other exterior surfaces of], urinals [exterior surfaces of] and vanity tops, and other hard nonporous surfaces listed on this label.

Health club facilities, Fitness Centers, and Gyms: Gym equipment, weight-lifting surfaces and other hard nonporous surfaces listed on this label.

Schools or Classrooms or Churches or Office Buildings or Public Facilities or Manufacturing Facilities or Libraries or Public Telephones: Cabinets, chairs, computers, computer monitors, computer mouse, counters, countertops, desks, desktops, doorknobs, fax machines, filing cabinets, filing doors, filing handles, garbage cans, headsets, keyboards, railings, seats, sinks, tables, tabletops, telephones, toys, trash cans, work stations, and other hard nonporous surfaces listed on this label.

Transport vehicles, school buses, public buses, fire trucks, police cars, airplanes, cruise ships, cargo vessels: Hard nonporous surfaces of vehicles including steering wheel, hard plastic or metal flooring, seats, and walls.

Restaurants: Hard nonporous, nonfood contact surfaces only including chairs, display cabinets, garbage cans, booster seats, floor, sinks, bathroom surfaces, glazed tiled walls, telephones, cash registers, and doorknobs.

THE INFORMATION IN BOX IS NOT PART OF THE LABELING

[] - Statements in brackets are optional or instructional. Italicized words in brackets are not included

A footnote can be used to list organisms. Bacteria and virus can be separated into footnotes 1 and 2 if desired.

When organisms are listed next to a claim, the organisms may be listed in a footnote instead of directly next to the claim

+All pesticidal "germ" claims must be linked to bacteria (minimum: Salmonella and Staph) and at least one virus. For example: Front panel: "Kills germs*" Back panel: "**Kills Salmonella enterica, Staphylococcus aureus, Herpes Simplex Type 2, and Influenza A/Hong Kong"

Sequence and placement of phrases is optional unless specified in 40 CFR 156.10.

Capitalization, plurals or singular, bold and italics are all variable unless specified in 40 CFR

The terms "Wipe(s)", "Towel(s)", "Towelette(s)" and "Cloth(s)" can be used interchangeably throughout except for the product primary brand name which can be only changed by notification or amendment.

[Symbols including asterisks, bullets or footnotes and similar may be used to designate categories of organisms.]
[ATCC numbers are not required to be listed on production label. Organisms may be listed in a table and in any order.]

Multi-Drug Resistant Bacteria [(1 Minute Contact)]

Acinetobacter baumannii - Multidrug Resistant (MDR) [ATCC 19606] [Effective against organism resistant to Cefazolin, Gentamicin, Trimethoprim/Sulfa and Intermediate resistance to Cefepime, Ceftazidime, Ceftriaxone]
Carbapenem Resistant - *Klebsiella pneumoniae* (CRKP) [ATCC BAA-1705]
Carbapenem Resistant - *Escherichia coli* [CDC 81371]
ESBL Positive *Escherichia coli* [ATCC BAA-196]
ESBL Positive *Klebsiella pneumoniae* [ATCC 700603]
Multidrug Resistant (MDR) *Klebsiella pneumoniae*-KPC-2 positive [ST258] [CDC 2008030] [Effective against organism resistant to Ampicillin, Ampicillin/Sulbactam, Cefazolin, Ceftazidime, Ciprofloxacin, Ertapenem, Imipenem, Levofloxacin, Piperacillin/Tazo, Tobramycin, Trimethoprim/Sulfa, Meropenem and Intermediate resistance to Amikacin, Ceftriaxone]
Metallo-beta lactamase (MBL) positive *Pseudomonas aeruginosa* [CDC 2012059] [Effective against organism resistant to Ampicillin, Ampicillin/Sulbactam, Ciprofloxacin, Gentamicin, Imipenem, Ertapenem, Levofloxacin, Piperacillin/Tazo, Tobramycin, Trimethoprim/Sulfa and Intermediate resistance to Cefepime, Ceftazidime]
Methicillin Resistant *Staphylococcus aureus* (MRSA) [ATCC 33592]
Community Acquired Methicillin Resistant *Staphylococcus aureus* [CA-MRSA Genotype USA 300] [NRS 384]
Community Acquired Methicillin Resistant *Staphylococcus aureus* [CA-MRSA Genotype USA 400] [NRS 123]
NDM-1- Positive *Enterobacter cloacae* [CDC 1000654]
NDM-1- Positive *Escherichia coli* [CDC 1001728]
NDM-1- Positive *Klebsiella pneumoniae* [CDC 1000527]
Streptococcus pneumoniae - Penicillin Resistant [ATCC 700677]
Vancomycin Intermediate Resistant *Staphylococcus aureus* (VISA) [HIP 5836]
Vancomycin Resistant *Enterococcus faecalis* (VRE) [ATCC 51575]
Vancomycin Resistant *Staphylococcus aureus* (VRSA) [VRS1]

Bacteria [(1 Minute Contact)]

Bordetella pertussis [ATCC 12743]
Burkholderia cepacia [ATCC 25416]
Campylobacter jejuni [ATCC 29428]
Enterobacter aerogenes [ATCC 13048]
Escherichia coli (*E. coli*) [ATCC 11229]
Escherichia coli O157:H7 [ATCC 35150]
Klebsiella pneumoniae [ATCC 4352]
Legionella pneumophila [ATCC 33153]
Listeria monocytogenes [ATCC 19117]
Proteus vulgaris [ATCC 9920]
Pseudomonas aeruginosa [ATCC 15442]
Salmonella enterica [ATCC 10708]
Shigella dysenteriae [ATCC 11835]
Staphylococcus aureus [ATCC 6538]
Streptococcus pyogenes [ATCC 12344]
Streptococcus pneumoniae [ATCC 6305]

Bloodborne Pathogens [(1 Minute Contact)]

*Hepatitis B virus (HBV) - Duck HBV[†] [Strain 10/29/11]
*Hepatitis C virus (Human) (HCV) – Bovine Diarrhea Virus[†] [Strain Oregon C24v-genotype 1]
*HIV-1[†] (AIDS virus) [Strain HTLV-III_B]

Non-Enveloped Viruses* [(1 Minute Contact)]

*Adenovirus type 5 [ATCC VR-5]
*Enterovirus EV-D68 [ATCC VR-561]
*Rhinovirus type 1a [ATCC VR-1559] [Strain 2060]
*Rotavirus (Strain WA)

Enveloped Viruses* [(1 Minute Contact)]

*Cytomegalovirus [ATCC VR-538] [Strain AD-169]
*Herpes Simplex virus type 1 [ATCC VR-733] [Strain (F-1)]
*Herpes Simplex virus type 2 [ATCC VR-734] [Strain G]
*Human Coronavirus [Strain 229E] [ATCC VR-740]
*Avian Influenza A (H7N9) virus [CDC 2013759189] [Strain wildtype A/Anhui/1/2013]
*Avian Influenza A (H5N1) virus [CDC 2006719965] [Strain VNH5N1-PR8/CDC-RG]
*Influenza A virus (H3N2) / Strain Hong Kong [ATCC VR-544]
*Influenza B virus [ATCC VR-823], Strain B/Hong Kong/5/72
*Respiratory Syncytial virus (RSV) [ATCC VR-26], Strain Long
*Vaccinia virus (Strain WR) [ATCC VR-119]

Pathogenic Fungi [(1 Minute Contact)]

Candida albicans [ATCC 10231]
Trichophyton mentagrophytes [ATCC 9533]

Mycobacterium (TB) [Tuberculocidal] [(1 Minute Contact)]

Mycobacterium bovis BCG (Tuberculosis) (TB) [Organon Teknika]

[Effective against all listed organisms in the presence of organic soil (5% blood serum)]

THE INFORMATION IN BOX IS NOT PART OF THE LABELING

[] - Statements in brackets are optional or instructional. Italicized words in brackets are not included
A footnote can be used to list organisms. Bacteria and virus can be separated into footnotes 1 and 2 if desired.
When organisms are listed next to a claim, the organisms may be listed in a footnote instead of directly next to the claim
+All pesticidal "germ" claims must be linked to bacteria (minimum: Salmonella and Staph) and at least one virus. For example: Front panel: "Kills germs*" Back panel: "**Kills Salmonella enterica, Staphylococcus aureus, Herpes Simplex Type 2, and Influenza A/Hong Kong"
Sequence and placement of phrases is optional unless specified in 40 CFR 156.10.
Capitalization, plurals or singular, bold and italics are all variable unless specified in 40 CFR
The terms "Wipe(s)", "Towel(s)", "Towelette(s)" and "Cloth(s)" can be used interchangeably throughout except for the product primary brand name which can be only changed by notification or amendment.

[Optional organism listings and claims:]

[*][*Product name*] is virucidal against Adenovirus type 5, Avian Influenza A (H7N9) virus, Cytomegalovirus, Enterovirus EV-D68, Hepatitis B virus (HBV), Hepatitis C virus (Human) (HCV), Herpes Simplex virus type 1, Herpes Simplex type 2 (causative agent of genital herpes), HIV-1, Human Coronavirus, Avian Influenza A virus (H5N1), Influenza A virus (H3N2) / Hong Kong strain (representative of the common flu virus), Influenza B virus, Respiratory Syncytial Virus [RSV], Rhinovirus type 1a, Rotavirus (Strain WA), and Vaccinia virus in the presence of organic soil (5% blood serum).

[Optional: Choose one of the following statements:]

[Respiratory illnesses attributable to Pandemic 2009 H1N1 are caused by influenza A virus. This product is a broad-spectrum hard surface disinfectant that has been shown to be effective against (influenza A virus tested and listed on the label) and is expected to inactivate all influenza A viruses including Pandemic 2009 H1N1 (formerly called swine flu).

This product has demonstrated effectiveness against influenza A virus and is expected to inactivate all influenza A viruses including Pandemic 2009 H1N1 influenza A virus.

This product has demonstrated effectiveness against (influenza A virus tested and listed on the label) and is expected to inactivate all influenza A viruses including Pandemic 2009 H1N1 (formerly called swine flu).

Kills Pandemic 2009 H1N1 influenza A virus (formerly called swine flu).

Kills Pandemic 2009 H1N1 influenza A virus.]

[*Product name*] is a premoistened, nonwoven durable wipe containing a quaternary/alcohol based solution. Recommended for use in hospitals and other critical care areas where the control of the hazards of cross-contamination between treated surfaces is required. [Suitable for use on equipment requiring alcohol-based products.] Use on hard nonporous surfaces and equipment listed on this label made of stainless steel, plastic, Formica® and glass.

THE INFORMATION IN BOX IS NOT PART OF THE LABELING

[] - Statements in brackets are optional or instructional. Italicized words in brackets are not included

A footnote can be used to list organisms. Bacteria and virus can be separated into footnotes 1 and 2 if desired.

When organisms are listed next to a claim, the organisms may be listed in a footnote instead of directly next to the claim

+All pesticidal "germ" claims must be linked to bacteria (minimum: Salmonella and Staph) and at least one virus. For example: Front panel: "Kills germs*" Back panel: "*Kills Salmonella enterica, Staphylococcus aureus, Herpes Simplex Type 2, and Influenza A/Hong Kong"

Sequence and placement of phrases is optional unless specified in 40 CFR 156.10.

Capitalization, plurals or singular, bold and italics are all variable unless specified in 40 CFR

The terms "Wipe(s)", "Towel(s)", "Towelette(s)" and "Cloth(s)" can be used interchangeably throughout except for the product primary brand name which can be only changed by notification or amendment.

Optional Claims and Descriptors [Note: Deodorizing directions must be used when deodorizing claims (claims involving odor control) are used]

X" x Y" [wipes]

_% bigger [[quilted] wipes] [vs. X" x Y" wipes]

_# pre-saturated towelettes X" x Y"

© [insert year] [insert company name]

[Absorbent] wipe

After use, just toss wipe(s) away

Always ready to use

An effective method to deodorize and disinfect against odor-causing organisms on hard nonporous surfaces [listed on this label]

An effective way to disinfect hard, nonporous environmental surfaces listed on this label.

A nonwoven disposable cloth for use in hospitals and other critical care areas where control between treated surfaces is required.

Antibacterial

Antimicrobial

[Antibacterial] [Antimicrobial] health club equipment wipe

A Quaternary [ammonium chloride]/alcohol solution impregnated in a wiping cloth

Are pre-measured to have the recommended amount of germicidal solution, wipe after wipe.

A Sani-Surface® Brand

[Bactericidal], [Tuberculocidal], [Fungicidal] [Herpicidal*] and [Virucidal*] in 1 [one] minute

Bactericidal

Bleach-free [formula] [*this is included as useful info for users needing a bleach-free product*]

Broad spectrum [microorganism coverage]

Brought to you by [Sani-Cloth®] [PDI®]

Can help reduce the risk of cross contamination on treated surfaces

Cellulosic nonwoven disposable cloth

Cleans as it disinfects

[Cloth-like texture] [Textured] [strong] [for] [with] scrubbing power

Close lid [after use] [when not in use]

Compatible for use on [hard, nonporous] surfaces commonly found in healthcare settings [listed on this label]

Compatible with equipment surfaces

Contains [number] canisters [plus] [and] [number] [refills]

Convenient

Deodorizes, and kills common household germs* [*use at least two bacteria and two viruses from the organism list*]

Diamond-embossed wipe is low-linting [for sensitive equipment surfaces]

Disinfect external surfaces of ultrasound transducers

Disinfect pre-cleaned surfaces

Disinfectant towelettes

Disinfects [and deodorizes] [hard] [nonporous surface(s)] [that people touch] [just] [in 1 minute]

Disinfects [grocery cart handles] [shopping cart handles] [grocery cart child seats] [shopping cart child seats]

[Disinfects] nonporous hard surfaces

Disinfects [health club equipment] [treadmill handles] [elliptical handles] [exercise bike handles] [weight benches]

Disinfects on the go

Dispenses one wipe at a time

Do not use on natural marble, windows, unpainted wood, brass, clear plastic, or colored grout.

Does not contain bleach [*this is included as useful info for users needing a bleach-free product*]

Does not produce mist or overspray

Double-sided scrubbing wipes

Durable, low-lint wipe designed for sensitive equipment surfaces

Easy

Easy [and convenient] way to [touch-up] [bathroom] [office] [and other sites listed on this label] everyday

[Easy] [Convenient] [dispensing] lid [closure] [cap] [package]

Easy drop-in refill[s]

[Easy] pop-up-tub

Easy start lid [package]

THE INFORMATION IN BOX IS NOT PART OF THE LABELING

[] - Statements in brackets are optional or instructional. Italicized words in brackets are not included

A footnote can be used to list organisms. Bacteria and virus can be separated into footnotes 1 and 2 if desired.

When organisms are listed next to a claim, the organisms may be listed in a footnote instead of directly next to the claim

+All pesticidal "germ" claims must be linked to bacteria (minimum: Salmonella and Staph) and at least one virus. For example: Front panel: "Kills germs*" Back panel: "*Kills Salmonella enterica, Staphylococcus aureus, Herpes Simplex Type 2, and Influenza A/Hong Kong"

Sequence and placement of phrases is optional unless specified in 40 CFR 156.10.

Capitalization, plurals or singular, bold and italics are all variable unless specified in 40 CFR

The terms "Wipe(s)", "Towel(s)", "Towelette(s)" and "Cloth(s)" can be used interchangeably throughout except for the product primary brand name which can be only changed by notification or amendment.

Easy to use [easy to refill]
 Easy to use package [canister] [container] keeps [your] wipes moist
 [Economical] Refill[s] [one] [1] [two] [2] [three] [3] [four] [4] [various numbers] -pack
 [Economical] Refills [now] available
 Effective against bathroom bacteria and viruses* [*use at least two bacteria and two viruses from the organism list*]
 Effective against [the following micro-organisms on hard, nonporous surfaces] [*list microorganism*]
 Effective in the presence of 5% blood serum contamination
 Eliminates odors
 Eliminates potential for overspray
 Exclusive to PDI, Inc.
 Extra large [disinfecting] [Y" x Z" compared to our A" x B" size] wipes
 Fast [Convenient] [Portable] way to disinfect hard nonporous surfaces
 [For] daily use
 [For] nonfood contact surfaces [only]
 From the makers of Sani-Cloth®
 Fungicidal
 [Gets rid of] [Eliminates] odors
 Germicidal* [Wipe] [*use at least two bacteria and two viruses from the organism list*]
 [Helps] [kill(s)] [eliminate(s)] odor-causing bacteria
 Helps prevent cross contamination on treated surfaces
 Herpical*
 Hospital disinfectant [disinfection] [*use only when hospital use sites on label*]
 Ideal for use on high-touch, hard nonporous surfaces
 Includes_ count refill [pack] [contains]_ wipes
 Just -or- simply wipe exterior toilet surface -or- bathroom germs+ away
 Just [pull] wipe and toss
 Kills bacteria and viruses* [in the bathroom] [on the exterior toilet surfaces] [*use at least two bacteria and two viruses from the organism list;*]
 Kills bacteria [quickly] [fast] [in 1 minute][in 60 seconds]
 [Kills] [Effective against] MRSA [(Methicillin Resistant *Staphylococcus aureus*)]
 [Kills] [Effective against] CRKP [(Carbapenem Resistant *Klebsiella pneumoniae*)]
 Kills microorganisms in [1 minute] [60 seconds]
 Kills [household] [exterior toilet surface] [bathroom] germs+ [*use at least two bacteria and two viruses from the organism list*]
 Kills odor-causing bacteria
 [Kills] [Effective against] TB in [1][one] minute
 Leaves [bathroom] [office] [and other sites listed on this label] disinfected [and smelling fresh]
 Less [reduced] packaging [less to throw away]
 Made in USA
 Meets OSHA Bloodborne Pathogen Standard [or AHE Practice Guidance for environmental cleaning] [CDC Guidelines for disinfection and sterilization in healthcare settings]
 Moisture-lock lid
 Multi-pack
 Multi-purpose disinfectant [Multi [-refill] pack]
 New (*may be used for 6 months on marketed label*)
 New larger, thicker wipe [with diamond-embossed design]
 New thicker wipe with diamond-embossed design
 Next wipe pops up automatically [every time] [!]
 No canister needed
 No measuring
 No mixing
 No [pinched fingers] [rips] [tears]
 No sponges, no rags, no buckets, no mess
 No threading [required]
 Non-scratching [wipe]
 Nonwoven disposable cloth
 Non-Bleach [*this is included as useful info for users needing a bleach-free product*]

THE INFORMATION IN BOX IS NOT PART OF THE LABELING

[] - Statements in brackets are optional or instructional. Italicized words in brackets are not included
 A footnote can be used to list organisms. Bacteria and virus can be separated into footnotes 1 and 2 if desired.
 When organisms are listed next to a claim, the organisms may be listed in a footnote instead of directly next to the claim
 +All pesticidal "germ" claims must be linked to bacteria (minimum: Salmonella and Staph) and at least one virus. For example: Front panel: "Kills germs*" Back panel: "*Kills Salmonella enterica, Staphylococcus aureus, Herpes Simplex Type 2, and Influenza A/Hong Kong"
 Sequence and placement of phrases is optional unless specified in 40 CFR 156.10.
 Capitalization, plurals or singular, bold and italics are all variable unless specified in 40 CFR
 The terms "Wipe(s)", "Towel(s)", "Towelette(s)" and "Cloth(s)" can be used interchangeably throughout except for the product primary brand name which can be only changed by notification or amendment.

Non-corrosive
 Not available in private label
 Not for sale in *[insert name of state(s)]*
 Not for sale *[or use]* after *[insert date]*
 Odor *[eliminator]* *[neutralizer]*
 One-Step Cleaner/Disinfectant *[Grease and soap scum claims are not to be used on labeling with one-step cleaning/disinfection claims]*
 One *[wipe]* at a time dispensing
 Overall *[1]* *[one]* minute contact time
 Overall 60 second contact time
*[Package]**[insert type of package]* made from *[x%]* recycled materials
 Perfect for disinfecting *[exterior toilet surfaces]* *[around the exterior toilet surface]*
 Picks up *[particles]* *(dust)* *[dirt]* *[hair]* *[crumbs]*
[Please] keep lid closed
 Pop-up *[dispensing]* *[top]*
 Powers through tough messes
[Premixed], *[premeasured]*, *[premoistened]*
 Proprietary Formulation *[product]*
[Quickly] eliminates *[lingering]* *[food]* odors on surfaces
 Ready to Use *[disinfectant]*
 Recyclable *[package]*
 Reduce *[risk of cross contamination]* *[on hard nonporous surfaces]*
 Reduces *[packaging]* waste *[by x%]* *[when compared to regular canister or bucket or pail]*
 Reduces exposure to *[microorganism]* from treated surface
[Refill] package contains *[various numbers]* *[wet]* *[premoistened]* *[wipe]* *[refill(s)]* *[roll(s)]*
 Refill *[size]* *[pack]* *[value pack]*
 Refillable *[with]* *[#wipes]* *[dispenser]* refill *[pack]* *[for dispenser]*
 Removes odors
 Requires no mixing or measuring and are ready-to-use
 Scrubbing power of a sponge in a disinfecting wipe
 Strong, durable diamond-embossed textured wipe deodorizes
 Strong, durable low-lint wipe *[designed for sensitive equipment surfaces]*
[Strong,] Scrubby wipe helps remove *[dried]* blood *[and]* *[bodily fluids]* from surfaces
[Strong,] Scrubby wipe helps remove dirt and grime from surfaces
 Shelf-Stable formula
 Suitable for use on equipment requiring alcohol-based products
 Surface disinfectant
 Tear at perforation
 Test wipe on small inconspicuous area first
 Textured diamond-embossed design *[deodorizes hard, non-porous surfaces]*
 The 1-minute *[germicidal*]* wipe *[disinfectant wipe]*
 Thick, heavy duty wipes are bactericidal, tuberculocidal and virucidal* in 1 minute
 Thick, large wipe disinfects
 Thick, textured wipe with diamond-embossed design
 This product cleans, disinfects and deodorizes hard, nonporous healthcare *[or medical]* surfaces in 1 step with no rinsing required. *[Grease and soap scum claims are not to be used on labeling with one-step cleaning/disinfection claims]*
 Trial *[pack]*
 Tub refill
 Tub with pop-up action
 Tuberculocidal
 Twin pack
 Unique *[Patented]* Formula
 Use by *[insert date]*
 Use on hard, nonporous surfaces only: *[stainless steel]* *[Formica®]* *[glass]* *[glass tables]* *[glazed tile]* *[Test wipe on a small inconspicuous area first.]*
[Use to] Deodorize hard, nonporous surfaces

THE INFORMATION IN BOX IS NOT PART OF THE LABELING

[] - Statements in brackets are optional or instructional. Italicized words in brackets are not included
 A footnote can be used to list organisms. Bacteria and virus can be separated into footnotes 1 and 2 if desired.
 When organisms are listed next to a claim, the organisms may be listed in a footnote instead of directly next to the claim
 +All pesticidal "germ" claims must be linked to bacteria (minimum: Salmonella and Staph) and at least one virus. For example: Front panel: "Kills germs*" Back panel: "*Kills Salmonella enterica, Staphylococcus aureus, Herpes Simplex Type 2, and Influenza A/Hong Kong"
 Sequence and placement of phrases is optional unless specified in 40 CFR 156.10.
 Capitalization, plurals or singular, bold and italics are all variable unless specified in 40 CFR
 The terms "Wipe(s)", "Towel(s)", "Towelette(s)" and "Cloth(s)" can be used interchangeably throughout except for the product primary brand name which can be only changed by notification or amendment.

[Use to] disinfect(s) hard nonporous environmental surfaces listed on this label
Use to pre-clean or decontaminate critical or semi-critical medical devices prior to sterilization / high-level disinfection
[Use to] refill[s] [count] [wipe] canisters or tubs
Value
Versatile
Virucidal*
Wet wipes
Where control of the hazards of cross contamination between treated surfaces is of prime importance
Wipe [material] made from [x] % [sustainable] [ingredients] [fibers] *[May be used only when cellulose wipe material used]*
[Wipes out] [Kills] [Eliminates] *[List organisms]* in [just] [1 minute]
[Wipes out] [Kills] [the] flu virus* (*Influenza A/Hong Kong)
[Wipes out] [Kills] viruses* and bacteria [including the flu virus* (*Influenza A/Hong Kong)]
[Wiping] [soft] side for disinfecting
With a bleach-free formula *[this is included as useful info for users needing a bleach-free product]*
X% [more] [wipes] [free] [vs. Z count] [canisters] [packs]
X% reduction in packaging [material]

Note: The following claims can be used only for 6 months]

[Better] [New] [Improved] [Stronger] [Thicker] Wipe [!]
[Better] [new] [&] [improved] [dispensing] lid [closure] [cap] [package] [dispensing] [better [than before]
New and improved
[New] [Package] [packaging] uses [x%] less material (plastic) [then] [when compared to] [regular]
containers [or canisters]
New thicker and larger diamond-embossed wipe cleans more surface area
[Now] [Reinforced] [With] Quilted [strength]
Now with [%] more towel
Now with [#] more wipes
[Scrubs] [&] [cleans] [better than ever]
[Stronger] more durable [wipe]
Thick[er] [wipe] [with] cloth-like texture
X% [Bigger] [larger] [quilted] wipes
[X%] thicker wipes

THE INFORMATION IN BOX IS NOT PART OF THE LABELING

[] - Statements in brackets are optional or instructional. Italicized words in brackets are not included
A footnote can be used to list organisms. Bacteria and virus can be separated into footnotes 1 and 2 if desired.
When organisms are listed next to a claim, the organisms may be listed in a footnote instead of directly next to the claim
+All pesticidal "germ" claims must be linked to bacteria (minimum: Salmonella and Staph) and at least one virus. For example: Front panel: "Kills germs*" Back panel: "*Kills Salmonella enterica, Staphylococcus aureus, Herpes Simplex Type 2, and Influenza A/Hong Kong"
Sequence and placement of phrases is optional unless specified in 40 CFR 156.10.
Capitalization, plurals or singular, bold and italics are all variable unless specified in 40 CFR
The terms "Wipe(s)", "Towel(s)", "Towelette(s)" and "Cloth(s)" can be used interchangeably throughout except for the product primary brand name which can be only changed by notification or amendment.

[Graphics depicting use sites listed on this label can appear on product label and labeling.]
 [The following graphics and statements are optional.
 They may be placed anywhere on label/container.]

NOT FOR USE ON SKIN
FOR USE ON HARD NONPOROUS SURFACES ONLY



[One side scrubs] [One side wipes]

This graphic shows use of the wipe dispenser

THE INFORMATION IN BOX IS NOT PART OF THE LABELING

[] - Statements in brackets are optional or instructional. Italicized words in brackets are not included
 A footnote can be used to list organisms. Bacteria and virus can be separated into footnotes 1 and 2 if desired.
 When organisms are listed next to a claim, the organisms may be listed in a footnote instead of directly next to the claim
 +All pesticidal "germ" claims must be linked to bacteria (minimum: Salmonella and Staph) and at least one virus. For example: Front panel: "Kills germs*" Back panel: "*Kills Salmonella enterica, Staphylococcus aureus, Herpes Simplex Type 2, and Influenza A/Hong Kong"
 Sequence and placement of phrases is optional unless specified in 40 CFR 156.10.
 Capitalization, plurals or singular, bold and italics are all variable unless specified in 40 CFR
 The terms "Wipe(s)", "Towel(s)", "Towelette(s)" and "Cloth(s)" can be used interchangeably throughout except for the product primary brand name which can be only changed by notification or amendment.



[The following are company logos for use on PDI product labels. The purpose of the logo is for easy recognition of PDI products in the marketplace.]



THE INFORMATION IN BOX IS NOT PART OF THE LABELING

[] - Statements in brackets are optional or instructional. Italicized words in brackets are not included

A footnote can be used to list organisms. Bacteria and virus can be separated into footnotes 1 and 2 if desired.

When organisms are listed next to a claim, the organisms may be listed in a footnote instead of directly next to the claim

+All pesticidal "germ" claims must be linked to bacteria (minimum: Salmonella and Staph) and at least one virus. For example: Front panel: "Kills germs*" Back panel: "+Kills Salmonella enterica, Staphylococcus aureus, Herpes Simplex Type 2, and Influenza A/Hong Kong"

Sequence and placement of phrases is optional unless specified in 40 CFR 156.10.

Capitalization, plurals or singular, bold and italics are all variable unless specified in 40 CFR

The terms "Wipe(s)", "Towel(s)", "Towelette(s)" and "Cloth(s)" can be used interchangeably throughout except for the product primary brand name which can be only changed by notification or amendment.