



UNITED STATES ENVIRONMENTAL PROTECTION AGENCY
WASHINGTON, DC 20460

OFFICE OF CHEMICAL SAFETY
AND POLLUTION PREVENTION

May 18, 2022

Jean Claude Marcelin
Senior Regulatory Affairs Manager
Professional Disposables International, Inc. (PDI)
400 Chestnut Ridge Road
Woodcliff Lake, NJ 07677

Subject: Notification per PRN 98-10 – Minor Label Changes
Product Name: SANI-CLOTH PLUS GERMICIDAL DISPOSABLE CLOTH
EPA Registration Number: 9480-6
Received Date: May 2, 2022
Action Case Number/Decision Number: 00359557

Dear Jean Claude Marcelin:

The Agency is in receipt of your Application for Pesticide Notification under Pesticide Registration Notice (PRN) 98-10 for the above referenced product. The Antimicrobials Division (AD) has conducted a review of this request for its applicability under PRN 98-10 and finds that the action requested falls within the scope of PRN 98-10.

The label submitted with the application has been stamped “Notification” and will be placed in our records.

Should you wish to add/retain a reference to the company’s website on your label, then please be aware that the website becomes labeling under the Federal Insecticide Fungicide and Rodenticide Act and is subject to review by the Agency. If the website is false or misleading, the product would be misbranded and unlawful to sell or distribute under FIFRA section 12(a)(1)(E). 40 CFR 156.10(a)(5) lists examples of statements EPA may consider false or misleading. In addition, regardless of whether a website is referenced on your product’s label, claims made on the website may not substantially differ from those claims approved through the registration process. Therefore, should the Agency find or if it is brought to our attention that a website contains false or misleading statements or claims substantially differing from the EPA approved registration, the website will be referred to the EPA’s Office of Enforcement and Assurance.

If you have any questions, you may contact Joe Daniels via email at daniels.joseph@epa.gov.

Sincerely,

A handwritten signature in black ink, appearing to read "John Hebert".

for

John Hebert, Branch Chief
Regulatory Management Branch 1
Antimicrobials Division (7510M)
Office of Pesticide Programs

NOTIFICATION

9480-6

The applicant has certified that no changes, other than those reported to the Agency have been made to the labeling. The Agency acknowledges this notification by letter dated:

05/18/2022

SANI-CLOTH® PLUS
GERMICIDAL DISPOSABLE CLOTH

Alternate brand name: SANI-CLOTH® PLUS GERMICIDAL DISPOSABLE WIPE

ACTIVE INGREDIENTS:

n-Alkyl (68% C₁₂, 32% C₁₄) dimethyl ethylbenzyl ammonium chlorides..... 0.125%

n-Alkyl (60% C₁₄, 30% C₁₆, 5%C₁₂, 5%C₁₈) dimethyl benzyl ammonium chlorides..... 0.125%

OTHER INGREDIENTS..... 99.750%

TOTAL 100.000%

[Does not include the weight of the [cloth] [towelette] [or] [wipe]]

KEEP OUT OF REACH OF CHILDREN
CAUTION

See [back] [outer carton] [side] [container inside] [panel] for additional precautionary statements

[Contains:] NET CONTENTS [and/or Net Wt.] _____oz (g) [or lbs. (kg)]

___ [# OF CLOTHS] [SIZE of each cloth]

EPA Reg. No.: 9480-6

EPA Est. No.: 9480-NY-1 [or others]

or

EPA Est. No. A=9480-NY-1, B=72956-WI-1, C=72956-AR-1 [or others]

Alpha character will precede batch code on product

[Manufactured by [or for]:]

Professional Disposables International, Inc.

400 Chestnut Ridge Road, Woodcliff Lake, NJ 07677 [USA]

[For information call: [phone number to be inserted]]

[Made in [USA] [with domestic and [foreign] [imported] materials] [insert country]

PRECAUTIONARY STATEMENTS:

Hazards to humans and domestic animals.

CAUTION: Causes moderate eye irritation. Avoid contact with eyes and clothing. Wash hands thoroughly with soap and water after handling, and before eating, drinking, chewing gum, using tobacco, or using the toilet.

THE INFORMATION IN BOX IS NOT PART OF THE LABELING

[] - Statements in brackets are optional. Italicize words in brackets are instructional. Italicized words in brackets are not included

A footnote can be used to list organisms. Bacteria and virus can be separated into footnotes 1 and 2 if desired.

When organisms are listed next to a claim, the organisms may be listed in a footnote instead of directly next to the claim

+All pesticidal "germ" claims must be linked to bacteria (minimum: Salmonella and Staph) and at least one virus. For example: Front panel: "Kills germs" Back panel: "+Kills Salmonella enterica, Staphylococcus aureus, Herpes Simplex Type 2, and Influenza A/Hong Kong"

Sequence and placement of phrases is optional unless specified in 40 CFR 156.10.

Capitalization, plurals or singular, bold and italics are all variable unless specified in 40 CFR

The terms "Wipe(s)", "Towel(s)", "Towelette(s)" and "Cloth(s)" can be used interchangeably throughout except for the product primary brand name which can be only changed by notification or amendment.

The word "and" and symbol "&" can be used interchangeably

All directions may be written in numbered form or in paragraph form

Graphics, symbols, and logos may vary in color.

April 29, 2022

FIRST AID:

Call a poison control center or doctor for treatment advice. Have the product container or label with you when calling a poison control center or doctor or going for treatment. [For additional information in case of emergency call toll free *[phone number to be inserted]*].

If in eyes: Hold eye open and rinse slowly and gently with water for 15-20 minutes. Remove contact lenses, if present, after the first 5 minutes, then continue rinsing.

PHYSICAL OR CHEMICAL HAZARDS:

Combustible. Do not use or store near heat or open flame. Do not use on natural marble, windows, unpainted wood, brass, clear plastic or colored grout.

[Symbols including asterisks, bullets or footnotes and similar may be used to designate categories of organisms.]
[ATCC numbers are not required to be listed on production label. Organisms may be listed in a table and in any order.] *[ATCC # not available unless shown]* *[Use one or more organisms listed below]*

Bacteria [(3 Minute Contact)] [Time]

Campylobacter jejuni [ATCC 29428]

Escherichia coli (*E. coli*) [ATCC 11229]

Escherichia coli O157:H7 [ATCC 35150]

Pseudomonas aeruginosa [ATCC 15442]

Salmonella enterica [ATCC 10708]

Staphylococcus aureus [ATCC 6538]

Multi-Drug Resistant Bacteria [(3 Minute Contact)] [Time]

Methicillin Resistant *Staphylococcus aureus* (MRSA) [ATCC 33592]

Vancomycin Resistant *Enterococcus faecalis* (VRE) [ATCC 51299] [in 3 minutes]

Viruses* [(3 Minute Contact)] [Time]

*Herpes Simplex virus Type 2 [ATCC VR-734]

*Influenza A virus /Hong Kong [ATCC VR-544]

*Influenza A (H1N1) virus [ATCC VR-98] [Strain A/Malaya/302/54]

*Respiratory Syncytial Virus [RSV] (Strain Long) [ATCC VR-26]

*Severe Acute Respiratory Syndrome-Related Coronavirus 2 (SARS-CoV-2) [(COVID-19 Virus)] [USA-WA1/2020]

Bloodborne Pathogens [(2 Minute Contact)] [Time]

*Hepatitis B virus (HBV) -Duck HBV[†]

*Hepatitis C virus (Human) (HCV) -Bovine Diarrhea Virus[†]

*HIV-1 (AIDS virus)[†]

Pathogenic Fungi [(3 Minute Contact Time)]

Trichophyton interdigitale [ATCC 9533]

Candida albicans [ATCC 10231]

THE INFORMATION IN BOX IS NOT PART OF THE LABELING

[] - Statements in brackets are optional. Italicize words in brackets are instructional. Italicized words in brackets are not included

A footnote can be used to list organisms. Bacteria and virus can be separated into footnotes 1 and 2 if desired.

When organisms are listed next to a claim, the organisms may be listed in a footnote instead of directly next to the claim

+All pesticidal "germ" claims must be linked to bacteria (minimum: Salmonella and Staph) and at least one virus. For example: Front panel: "Kills germs+" Back panel: "+Kills Salmonella enterica, Staphylococcus aureus, Herpes Simplex Type 2, and Influenza A/Hong Kong"

Sequence and placement of phrases is optional unless specified in 40 CFR 156.10.

Capitalization, plurals or singular, bold and italics are all variable unless specified in 40 CFR

The terms "Wipe(s)", "Towel(s)", "Towelette(s)" and "Cloth(s)" can be used interchangeably throughout except for the product primary brand name which can be only changed by notification or amendment.

The word "and" and symbol "&" can be used interchangeably

All directions may be written in numbered form or in paragraph form

Graphics, symbols, and logos may vary in color.

April 29, 2022

[A quaternary [ammonium chloride] solution impregnated in a wiping cloth. A nonwoven disposable cloth for use in hospitals and other critical care areas where the reduction of cross-contamination between treated hard, nonporous surfaces is required. Suitable for use on equipment requiring quat-based products. Use on hard nonporous surfaces and equipment listed on this label made of stainless steel, plastic, Formica® and glass. [Formica® is a registered trademark of The Diller Corporation.]

Areas of Use:

Hospital and Healthcare Settings[£] : May be used on hard, nonporous surfaces located in: Ambulances, Ambulatory Surgical Centers (ASC), Anesthesia, CAT Labs, CCU, Central Supply, Clinics, Dental Offices, Dialysis Clinics, Doctors Offices, Donation Centers[blood][plasma][semen][milk][apheresis], Emergency Medical Settings, Emergency Rooms, E.R., Emergency Vehicles, Eye Surgical Centers, Healthcare Settings, Healthcare Facilities, Home Healthcare, Hospices, Hospitals, ICU, Isolation Areas, Laboratory, Laundry rooms, Neonatal Intensive Care Units (NICU), Newborn nursery, Nursing homes, Operating Rooms (OR), Ophthalmic Offices, Orthopedics, Out-Patient Surgical Centers (OPSC), Patient Care Areas, Pediatrics, Pediatric Intensive Care Units (PICU), Physical therapy, Physician's offices, Radiology, Recovery Rooms, Rehabilitation, Respiratory therapy, Surgery, Surgical Centers, Transport vehicles and X-Ray.

and/or

Critical Care Areas: CCU, Emergency Rooms, E.R., ICU, Neonatal Intensive Care Units (NICU), Operating Rooms, Pediatric Intensive Care Units (PICU) and Surgery.

and

Hospital, Healthcare, and Critical Care Use Sites: May be used on hard nonporous surfaces of: ambulance equipment surfaces; bed railings; cabinets; carts; chairs; counters; dental chairs; dental countertops; dental unit instrument trays; endodontic equipment such as apex locators; exam tables; gurneys; infant incubators [interior and exterior surfaces of]; infant warmers [interior and exterior surfaces of]; isolettes; IV poles; laboratory equipment and surfaces; loupes; operating room tables and lights; operator light switches; oxygen hoods; physical therapy (PT) equipment surfaces; slit lamps; spine back boards; stethoscopes; stretchers; stools; tables; telephones; toilet seats; and hard nonporous outside surfaces of: amalgamators and dental curing lights; anesthesia machines and respiratory therapy equipment; apheresis machines, diagnostic equipment, dialysis machines; patient monitoring equipment, patient support and delivery equipment, pulp testers and motors; toilets; and ultrasound transducers and probes.

Grocery Stores or Shopping Centers or Supermarkets or Delicatessens: Disinfects grocery cart handles and grocery cart child seats. Disinfects shopping cart handles and child seats. Cleans grocery carts or shopping carts.

Nursery or Daycare Centers: Bassinets [interior and exterior surfaces of], changing tables, cribs, diaper changing stations, diaper pails, infant/child care equipment surfaces, trash cans, toys and other hard, nonporous surfaces listed on this label.

THE INFORMATION IN BOX IS NOT PART OF THE LABELING

[] - Statements in brackets are optional. Italicize words in brackets are instructional. Italicized words in brackets are not included

A footnote can be used to list organisms. Bacteria and virus can be separated into footnotes 1 and 2 if desired.

When organisms are listed next to a claim, the organisms may be listed in a footnote instead of directly next to the claim

+All pesticidal "germ" claims must be linked to bacteria (minimum: Salmonella and Staph) and at least one virus. For example: Front panel: "Kills germs+" Back panel: "+Kills Salmonella enterica, Staphylococcus aureus, Herpes Simplex Type 2, and Influenza A/Hong Kong"

Sequence and placement of phrases is optional unless specified in 40 CFR 156.10.

Capitalization, plurals or singular, bold and italics are all variable unless specified in 40 CFR

The terms "Wipe(s)", "Towel(s)", "Towelette(s)" and "Cloth(s)" can be used interchangeably throughout except for the product primary brand name which can be only changed by notification or amendment.

The word "and" and symbol "&" can be used interchangeably

All directions may be written in numbered form or in paragraph form

Graphics, symbols, and logos may vary in color.

April 29, 2022

Bathroom[s] or Public Restrooms: Basins, [bath]tubs, bathroom fixtures, cabinets, countertops, doorknobs, faucet[s], handles, hampers, handrails, shower[s] [stalls], showers, sinks, glazed tiled walls, glazed tiles, exterior surfaces of toilet[s] [such as handle *AND/OR* rim *AND/OR* seats *AND/OR* tank], exterior surfaces of urinals, vanity tops, and other hard nonporous surfaces listed on this label.

Health club facilities and Gyms: Gym equipment, weight-lifting surfaces and other hard nonporous surfaces listed on this label.

Schools or Classrooms or Office Buildings or Public Facilities or Manufacturing Facilities or Libraries or Public Telephones: Cabinets, chairs, computers, computer monitors, computer mice, counters, countertops, desks, desktops, doorknobs, fax machines, filing cabinets, filing doors, filing handles, garbage cans, headsets, keyboards, railings, seats, sinks, tables, tabletops, telephones, toys, trash cans, work stations, and other hard nonporous surfaces listed on this label.

Transport vehicles, school busses, public busses, fire trucks, police cars: Hard nonporous surfaces of vehicles including steering wheel, hard plastic or metal flooring, seats, and walls.

Restaurants: Hard nonporous, nonfood contact surfaces only including chairs, display cabinets, garbage cans, booster seats, floor, sinks, bathroom surfaces, tiled walls, telephones, cash registers, and doorknobs.

£This product is not to be used as a terminal sterilant/high level disinfectant on any surface or instrument that (1) is introduced directly into the human body, either into or in contact with the bloodstream or normally sterile areas of the body, or (2) contacts intact mucous membranes but which does not ordinarily penetrate the blood barrier or otherwise enter normally sterile areas of the body. This product may be used to preclean or decontaminate critical or semi-critical medical devices prior to [sterilization] [or] [high level disinfection].

[Use one of the following as applicable to type of container:]

[To Dispense TOWELETTES] [or WIPES] [or TOWELS] [or CLOTHS]:
Remove lid [and discard inner seal] [from container *or* canister] Find center of wipe roll, remove first wipe for use, twist corner of next wipe into a point and thread through the hole in the [container *or*] canister lid. Pull through about one inch. Replace lid. Dispense remaining wipes as necessary by pulling out at an angle. When not in use keep [center cap of] lid closed to prevent moisture loss.

TRAVEL PACK:
Peel back label slowly. Pull out wipes as needed and reseal label. Unfold wipe.

BOX DIRECTIONS:
Open along perforations as indicated. Remove packets as needed.

PACKET/PACKAGE:
Tear open packet [or package]. Unfold wipe and use as directed. Discard after single use.

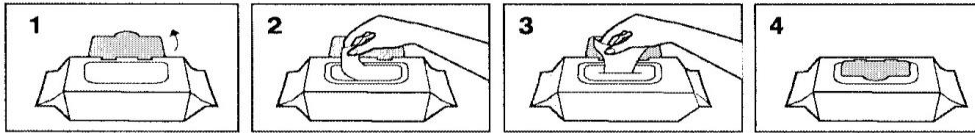
THE INFORMATION IN BOX IS NOT PART OF THE LABELING
[] - Statements in brackets are optional. Italicize words in brackets are instructional. Italicized words in brackets are not included
A footnote can be used to list organisms. Bacteria and virus can be separated into footnotes 1 and 2 if desired.
When organisms are listed next to a claim, the organisms may be listed in a footnote instead of directly next to the claim
+All pesticidal "germ" claims must be linked to bacteria (minimum: Salmonella and Staph) and at least one virus. For example: Front panel: "Kills germs+" Back panel: "+Kills Salmonella enterica, Staphylococcus aureus, Herpes Simplex Type 2, and Influenza A/Hong Kong"
Sequence and placement of phrases is optional unless specified in 40 CFR 156.10.
Capitalization, plurals or singular, bold and italics are all variable unless specified in 40 CFR
The terms "Wipe(s)", "Towel(s)", "Towelette(s)" and "Cloth(s)" can be used interchangeably throughout except for the product primary brand name which can be only changed by notification or amendment.
The word "and" and symbol "&" can be used interchangeably
All directions may be written in numbered form or in paragraph form
Graphics, symbols, and logos may vary in color.

April 29, 2022

To Dispense [or To use] [SOLO® PAK] [or soft pack] [or product]:

Open package lid. Completely remove inner seal. Pull out wipe [at an angle] [towards you through orifice or opening]. [The next wipe pops up automatically.] Snap lid closed after use to retain moisture.

SOLO® PAK:



DO NOT FLUSH • STORE AT ROOM TEMPERATURE
DISPOSE OF USED WIPES IN TRASH RECEPTACLE • KEEP SOLO® LID CLOSED WHEN NOT IN USE
SOLO® is a registered trademark of Nice-Pak Products, Inc.

REFILL [PACKET] [or PACKAGE] [or POUCH]:

This refill package is made for use only in a [product name] [container or] canister; do not use this product in a [container or] canister for another product. Do not use the refill wipes in a [container or] canister that is cracked or broken. Discard the cracked or broken [container or] canister in accordance with the [container or] canister disposal instructions on the label.

[Option 1]

Remove [entire] lid from [container or] canister. Tear open refill [package] at [notch] [mark] [arrow] and place [wipe] roll in empty [container or] canister. Follow information on [container or] canister to dispense wipes.

[Option 2]

Remove [entire] lid from [container or] canister. Tear open refill [package] at [notch] [mark] [arrow]. Place [entire] refill package of wipes in empty [container or] canister. Follow information on [container or] canister to dispense wipes.

GENERIC:

Open lid. Pull out wipe. Close lid tightly.

Bucket [or pail or container] [*numbers optional*]

1. Remove [the] lid from [the] [pail or bucket or container.]
2. Press open [the] dispenser at center of [the] lid.
3. Open [the] refill pack.
4. Locate [the] first wipe at [the] center of [the] roll.
5. Feed [the] first wipe though [the] dispensing orifice.
6. Reapply [the] lid to [the] [pail or bucket or container.]
7. Dispense [the] wipe.

THE INFORMATION IN BOX IS NOT PART OF THE LABELING

[] - Statements in brackets are optional. Italicize words in brackets are instructional. Italicized words in brackets are not included

A footnote can be used to list organisms. Bacteria and virus can be separated into footnotes 1 and 2 if desired.

When organisms are listed next to a claim, the organisms may be listed in a footnote instead of directly next to the claim

+All pesticidal "germ" claims must be linked to bacteria (minimum: Salmonella and Staph) and at least one virus. For example: Front panel: "Kills germs+" Back panel: "+Kills Salmonella enterica, Staphylococcus aureus, Herpes Simplex Type 2, and Influenza A/Hong Kong"

Sequence and placement of phrases is optional unless specified in 40 CFR 156.10.

Capitalization, plurals or singular, bold and italics are all variable unless specified in 40 CFR

The terms "Wipe(s)", "Towel(s)", "Towelette(s)" and "Cloth(s)" can be used interchangeably throughout except for the product primary brand name which can be only changed by notification or amendment.

The word "and" and symbol "&" can be used interchangeably

All directions may be written in numbered form or in paragraph form

Graphics, symbols, and logos may vary in color.

April 29, 2022

[For] [the] refill[s] [pouch]:

1. Remove [the] lid from [the] [pail or bucket or container.]
2. Remove [the] empty refill pack material from [the] [pail or bucket or container.]
3. Press open [the] dispenser at center of [the] lid.
4. Open [the] refill pack.
5. Locate [the] first wipe at [the] center of [the] roll.
6. Feed [the] first wipe through [the] dispensing orifice.
7. Reapply [the] lid to [the] pail.
8. Dispense [the] wipe.

DIRECTIONS FOR USE

It is a violation of Federal law to use this product in a manner inconsistent with its labeling.

[See directions for use on the container inside] [Consult equipment manufacturers' instructions prior to use.]

[Please be sure to [check] [OR consult] [equipment] [manufacturers] [instructions for use] [IFU(s)] [before] [OR prior] [to] use.] [[For surfaces,] Test wipe on small inconspicuous area before use.]

TO [CLEAN] [AND] [,] DISINFECT [AND DEODORIZE] HARD, NONPOROUS SURFACES: If present, use a wipe to remove [visible filth] [and] [or] [visible] [soil loads] prior to disinfecting. Unfold [a] [clean] wipe and thoroughly wet surface. Allow surface to remain visibly wet for contact time(s) listed on the label. [OR for three (3) minute[s]]. [Use [additional] [enough] wipe(s) [, if needed,] to ensure [continuous] [wet contact time(s) listed on the label] [three (3) minute[s] wet contact time.]] [Repeated use of the product may be required to ensure that the surface remains visibly wet [for contact time(s) listed on the label] [for three (3) minute[s]]. Let air dry. A potable water rinse is required for food contact surfaces. *[If label includes cleaning claims for grease, soap scum, grime, dirt, messes, soil, add the following as the first sentence: A precleaning step is required for [grease], [soap scum], [grime], [dirt], [messes], [soil]].*

[Optional directions:] Ultrasound transducers and probes:

For use on external surfaces of ultrasound transducers and probes only.

To disinfect: Preclean gel from external surface of ultrasound transducer or probe to be disinfected by using a clean washcloth. Then thoroughly wet the probe with a towelette. Allow surface to remain visibly wet for contact time(s) listed on the label. [OR for three (3) minute[s]]. [Use [additional] [enough] wipe(s) [, if needed,] to ensure [continuous] [wet contact time(s) listed on the label] [three (3) minute[s] wet contact time.]] [Repeated use of the product may be required to ensure that the surface remains visibly wet [for contact time(s) listed on the label] [for three (3) minute[s]]. Let air dry.

THE INFORMATION IN BOX IS NOT PART OF THE LABELING

[] - Statements in brackets are optional. Italicize words in brackets are instructional. Italicized words in brackets are not included

A footnote can be used to list organisms. Bacteria and virus can be separated into footnotes 1 and 2 if desired.

When organisms are listed next to a claim, the organisms may be listed in a footnote instead of directly next to the claim

+All pesticidal "germ" claims must be linked to bacteria (minimum: Salmonella and Staph) and at least one virus. For example: Front panel: "Kills germs+" Back panel: "+Kills Salmonella enterica, Staphylococcus aureus, Herpes Simplex Type 2, and Influenza A/Hong Kong"

Sequence and placement of phrases is optional unless specified in 40 CFR 156.10.

Capitalization, plurals or singular, bold and italics are all variable unless specified in 40 CFR

The terms "Wipe(s)", "Towel(s)", "Towelette(s)" and "Cloth(s)" can be used interchangeably throughout except for the product primary brand name which can be only changed by notification or amendment.

The word "and" and symbol "&" can be used interchangeably

All directions may be written in numbered form or in paragraph form

Graphics, symbols, and logos may vary in color.

April 29, 2022

†KILLS HIV-1 (AIDS VIRUS), HEPATITIS B VIRUS (HBV) AND HEPATITIS C VIRUS (HCV) ON THE PRE-CLEANED ENVIRONMENTAL SURFACES/OBJECTS AND PRECLEANED EXTERNAL SURFACES OF ULTRASOUND TRANSDUCERS AND PROBES PREVIOUSLY SOILED WITH BLOOD/BODY FLUIDS in two (2) minutes at room temperature (68°- 77°F) or (20°- 25°C) in healthcare or other settings in which there is an expected likelihood of soiling of inanimate surfaces/objects with blood or body fluids, and in which the surfaces/objects likely to be soiled with blood or body fluids can be associated with the potential for transmission of Human Immunodeficiency Virus Type 1 (HIV-1) (associated with AIDS), Hepatitis B Virus (HBV) and Hepatitis C Virus (HCV).

†SPECIAL INSTRUCTIONS FOR CLEANING AND DECONTAMINATION AGAINST HIV-1, HEPATITIS B VIRUS (HBV) AND HEPATITIS C VIRUS (HCV) ON SURFACES/OBJECTS SOILED WITH BLOOD/BODY FLUIDS

Personal protection: When using this product, wear disposable protective gloves, protective gowns, face masks, and eye coverings [per facility protocol] when handling HIV-1 (AIDS Virus), HBV or HCV infected blood or body fluids.

Cleaning procedure: All blood and other body fluids must be thoroughly cleaned from surfaces and objects before disinfection by the germicidal wipe. Open, unfold first germicidal cloth to remove visible soil.

Disposal of infectious materials: Dispose of used towelette in accordance with local regulations for infectious waste disposal.

Contact time: Use second germicidal cloth to thoroughly wet surface. Allow surface to remain visibly wet [for] two (2) minutes, let air dry. [Although efficacy at a two (2) minute contact time has been shown to be adequate against HIV-1, HBV and HCV this time is not sufficient for the other organisms listed on this label. Therefore a three (3) minute wet contact time must be used for other listed organisms] or [For all other organisms see directions for contact times.]

[Use storage/disposal statement A if canister, tub, bucket, pail or refill dispenser directions used. Use storage/disposal statement B if travel pack, Solo® Pak, soft pack, pouch, or [refill or [bulk]] packet/package] directions used.]

STORAGE AND DISPOSAL

Do not contaminate water, food, or feed by storage and disposal. *[Statement not required for residential or household use products.]*

[Statement A:]

Storage: Do not store near heat or open flame. When not in use keep center cap of lid closed to prevent moisture loss. **Towelette Disposal:** Do not reuse towelette. Dispose of used towelette in trash. Do not flush in toilet. **Dispenser [or Container] [or Package] Disposal:** Nonrefillable container. Do not reuse or refill this container. Offer for recycling. If recycling is not available, put in trash collection.

[If refillable dispenser is being used, substitute the following: Refill Dispenser [or Container] [or Package] Disposal: Offer for recycling. If recycling is not available, discard in trash.]

[Statement B:]

Storage: Do not store near heat or open flame. **Towelette Disposal:** Do not reuse towelette. Dispose of used towelette in trash. Do not flush in toilet. **Dispenser [or Container] [or Package] Disposal:** Put empty [travel pack] [or Solo® Pak or [refill] packet [or packaging]] in trash collection.

THE INFORMATION IN BOX IS NOT PART OF THE LABELING

[] - Statements in brackets are optional. Italicize words in brackets are instructional. Italicized words in brackets are not included

A footnote can be used to list organisms. Bacteria and virus can be separated into footnotes 1 and 2 if desired.

When organisms are listed next to a claim, the organisms may be listed in a footnote instead of directly next to the claim

+All pesticidal "germ" claims must be linked to bacteria (minimum: Salmonella and Staph) and at least one virus. For example: Front panel: "Kills germs" Back panel: "+Kills Salmonella enterica, Staphylococcus aureus, Herpes Simplex Type 2, and Influenza A/Hong Kong"

Sequence and placement of phrases is optional unless specified in 40 CFR 156.10.

Capitalization, plurals or singular, bold and italics are all variable unless specified in 40 CFR

The terms "Wipe(s)", "Towel(s)", "Towelette(s)" and "Cloth(s)" can be used interchangeably throughout except for the product primary brand name which can be only changed by notification or amendment.

The word "and" and symbol "&" can be used interchangeably

All directions may be written in numbered form or in paragraph form

Graphics, symbols, and logos may vary in color.

April 29, 2022

Optional Claims and Descriptors

[Note: Deodorizing directions must be used when deodorizing claims (claims involving odor control) are used]

X" x Y" [wipes]

___% bigger [[quilted] wipes] vs. X" x Y" wipes

___# pre-saturated towelettes X" x Y"

© [insert year] [insert company name]

[A][An] [Easy] ▲ One-step disinfectant [or disinfecting] (except precleaning is required for visible soil, blood and body fluids) ▲ One step will not be used for food contact surfaces.

A bleach-free (formula) [a phenolic free (formula)]

[Absorbs] [Absorbent] [wipe]

After use, just toss wipe(s) away

Always ready to use

An effective method to deodorize and disinfect against odor-causing organisms on hard nonporous surfaces listed on this label.

An effective way to disinfect hard, nonporous environmental surfaces listed on this label.

A nonwoven disposable cloth for use in hospitals and other critical care areas where reduction of cross contamination between treated surfaces is required.

[Antibacterial] [Antimicrobial] health club equipment wipe

A Quaternary [ammonium chloride] solution impregnated in a wiping cloth

A Sani-Surface® Brand

Are pre-measured to have the recommended amount of germicidal solution, wipe after wipe.

Assures proper dilution strength, product effectiveness and standardized technique.

[Bactericidal]

[Bactericidal] [Fungicidal] [and] [Virucidal*] in [only] [just] 3 minutes

Bleach-free [formula]

Bonus

Can help reduce the risk of cross contamination on treated surfaces

Cellulosic nonwoven disposable cloth

[Cloth-like texture] [Textured] [strong] [for] [with] scrubbing power

Compatible for use on hard, nonporous surfaces commonly found in healthcare settings listed on this label

Contains [name of active ingredient], the [same] active ingredient used in [Brand-name]*

*This product is not manufactured or distributed by [company name ® or ™] The owner of the Registered Trademark [Brand name ® or ™]

Contains [number] canisters [plus] [and] [number] refills

Convenient

[Convenient] [Portable] way to disinfect hard nonporous surfaces

Deodorize hard, nonporous surfaces [Use to]

Deodorizes, and kills common household germs*

[Destroys] [Deactivates] SARS-CoV-2 [the virus that causes COVID-19] [in hospitals]ᶜ

[Diamond] [-] [embossed] wipe is low-linting

Disinfect [and for touch-up clean]

Disinfect and scrub clean

Disinfect external surfaces of ultrasound transducers

Disinfect the precleaned surface

Disinfecting towelettes

THE INFORMATION IN BOX IS NOT PART OF THE LABELING

[] - Statements in brackets are optional. Italicize words in brackets are instructional. Italicized words in brackets are not included

A footnote can be used to list organisms. Bacteria and virus can be separated into footnotes 1 and 2 if desired.

When organisms are listed next to a claim, the organisms may be listed in a footnote instead of directly next to the claim

+All pesticidal "germ" claims must be linked to bacteria (minimum: Salmonella and Staph) and at least one virus. For example: Front panel: "Kills germs*" Back panel: "*Kills Salmonella enterica, Staphylococcus aureus, Herpes Simplex Type 2, and Influenza A/Hong Kong"

Sequence and placement of phrases is optional unless specified in 40 CFR 156.10.

Capitalization, plurals or singular, bold and italics are all variable unless specified in 40 CFR

The terms "Wipe(s)", "Towel(s)", "Towelette(s)" and "Cloth(s)" can be used interchangeably throughout except for the product primary brand name which can be only changed by notification or amendment.

The word "and" and symbol "&" can be used interchangeably

All directions may be written in numbered form or in paragraph form

Graphics, symbols, and logos may vary in color.

April 29, 2022

Disinfects and deodorizes
 Disinfects grocery cart handles *or* shopping cart handles *or* grocery cart child seats *or* shopping cart child seats
 Disinfect[s] hard nonporous environmental surfaces listed on this label [Use to]
 Disinfects hard nonporous surfaces [that people touch]
 Disinfects hard nonporous [surfaces:] [health club equipment] [treadmill handles] [elliptical handles] [exercise bike handles] [weight benches]
 Disinfects on the go
 Dispenses one wipe at a time
 Does not contain bleach
 Does not produce mist or overspray
 Double-sided scrubbing wipes
 [Durable] [,] [low-lint] wipe
 Easy
 Easy [and convenient] way to disinfect hard, nonporous surfaces in a bathroom [*or*] exterior toilet surfaces
 Easy [and convenient] way to [touch-up] hard, nonporous surfaces in [bathrooms] [offices] everyday
 [Easy] [convenient] [dispensing] lid [closure] [cap] [package]
 Easy drop-in refill[s]
 [Easy] pop-up-tub
 Easy start lid [package]
 Easy to use [easy to refill]
 Easy to use package [canister] [container] keeps [your] wipes moist
 Easy way to disinfect hard, nonporous surfaces
 [Economical] Refill[s] [one] [1] [two] [2] [three] [3] [four] [4] [various numbers] –pack
 [Economical] Refills [now] available
 Economy
 Effective against bathroom bacteria and viruses* [*use at least two bacteria and two viruses from the organism list*]
 Effective against SARS-CoV-2 [Coronavirus] [the virus that causes COVID-19] [in 3 minutes][Ⓒ]
 Effective against the following micro-organisms on hard, nonporous surfaces [*list organisms*]
 Eliminates odors
 Eliminates potential for overspray
 [Extra] large [disinfecting] [Y" x Z" compared to our A" x B" size] wipe[s]
 For daily use
 Fungicidal
 Gets rid of [or] eliminates odors
 [Helps] [kill][s] [eliminate][s] odor-causing bacteria
 Helps reduce [bacterial] [viral] cross contamination between treated hard nonporous surfaces
 Helps reduce the spread of SARS-CoV-2 [Coronavirus] [the virus that causes COVID-19][Ⓒ] on treated, hard, nonporous surfaces
 Hospital disinfectant [disinfection] [*use only when hospital use sites on label*]
 Includes ___ count refill [pack] [contains] ___ wipes
 [Just] [or] simply wipe exterior toilet surface [or] bathroom germs* away
 [Just] [pull] wipe and toss
 Kills bacteria and viruses* on hard, nonporous surfaces in the bathroom [*use at least two bacteria and two viruses from the organism list:*] –or–on the exterior toilet surfaces
 [Kills] [Effective against] [MRSA] [(Methicillin Resistant Staphylococcus aureus)]

THE INFORMATION IN BOX IS NOT PART OF THE LABELING

[] - Statements in brackets are optional. Italicize words in brackets are instructional. Italicized words in brackets are not included
 A footnote can be used to list organisms. Bacteria and virus can be separated into footnotes 1 and 2 if desired.
 When organisms are listed next to a claim, the organisms may be listed in a footnote instead of directly next to the claim
 +All pesticidal "germ" claims must be linked to bacteria (minimum: Salmonella and Staph) and at least one virus. For example: Front panel: "Kills germs*" Back panel: "+Kills Salmonella enterica, Staphylococcus aureus, Herpes Simplex Type 2, and Influenza A/Hong Kong"
 Sequence and placement of phrases is optional unless specified in 40 CFR 156.10.
 Capitalization, plurals or singular, bold and italics are all variable unless specified in 40 CFR
 The terms "Wipe(s)", "Towel(s)", "Towelette(s)" and "Cloth(s)" can be used interchangeably throughout except for the product primary brand name which can be only changed by notification or amendment.
 The word "and" and symbol "&" can be used interchangeably
 All directions may be written in numbered form or in paragraph form
 Graphics, symbols, and logos may vary in color.

April 29, 2022

Kill germs* and bacteria instead of germ paper towels, sponges and rags [Use this product to]
 Kills germs* and bacteria and viruses on hard, nonporous surfaces in the bathroom [or] on the exterior toilet surfaces
 Kills household [or] exterior toilet surface [or] bathroom germs* + [use at least two bacteria and two viruses from the organism list]
 Kills odor causing [bacteria] [germs*]
 †Kills SARS-CoV-2 [Coronavirus] [the virus that causes COVID-19] [in 3 minutes] on hard, nonporous surfaces
 Kills SARS-CoV-2 [Coronavirus] [the virus that causes COVID-19] [in 3 minutes]‡
 Leaves [bathroom] [office] disinfected [and smelling fresh]
 Less [reduced] packaging [less to throw away]
 Moisture lock lid
 Multi-pack
 Multi-purpose disinfectant [Multi [-refill] pack]
 Next wipe pops up automatically [every time] [!]
 No canister needed
 No measuring
 No mixing
 Nonwoven disposable cloth
 No [pinched fingers] [rips] [tears]
 No sponges, no rags, no buckets, no mess
 No threading [required]
 Non-scratching [wipe]
 Not for sale in [insert name of state(s)]
 Not for in-home use
 Not for sale [or use] after [insert date]
 Odor [elimination] [neutralization]
 One [wipe] at a time dispensing
 On-the-go disinfectant
 [Package] [insert type of package] made from [x%] recycled materials
 Perfect for disinfecting exterior toilet surfaces –or- around the exterior toilet surface
 Picks up [particles] [dust] [dirt] [hair] [crumbs]
 Pop-up dispensing
 Pop-up [top]
 Portable
 Premeasured
 Premixed
 Premixed, premeasured, premoistened
 Premoistened
 [[Product name] is virucidal against:] [use at least two viruses from the organism list:]
 [[Product name] kills bacteria listed on this label:] [use at least two bacteria from the organism list:]
 Proven efficacy against SARS-CoV-2 [Coronavirus] [the virus that causes COVID-19] [in 3 minutes]‡
 Pull n/ Go [pack]
 Ready to Use on the following hard nonporous surfaces
 Recyclable [package]
 Reduce risk of cross contamination on hard nonporous surfaces

THE INFORMATION IN BOX IS NOT PART OF THE LABELING

[] - Statements in brackets are optional. Italicize words in brackets are instructional. Italicized words in brackets are not included
 A footnote can be used to list organisms. Bacteria and virus can be separated into footnotes 1 and 2 if desired.
 When organisms are listed next to a claim, the organisms may be listed in a footnote instead of directly next to the claim
 +All pesticidal "germ" claims must be linked to bacteria (minimum: Salmonella and Staph) and at least one virus. For example: Front panel: "Kills germs*" Back panel: "+Kills Salmonella enterica, Staphylococcus aureus, Herpes Simplex Type 2, and Influenza A/Hong Kong"
 Sequence and placement of phrases is optional unless specified in 40 CFR 156.10.
 Capitalization, plurals or singular, bold and italics are all variable unless specified in 40 CFR
 The terms "Wipe(s)", "Towel(s)", "Towelette(s)" and "Cloth(s)" can be used interchangeably throughout except for the product primary brand name which can be only changed by notification or amendment.
 The word "and" and symbol "&" can be used interchangeably
 All directions may be written in numbered form or in paragraph form
 Graphics, symbols, and logos may vary in color.

April 29, 2022

Reduces [packaging] waste [by x%] [when compared to regular canister or bucket or pail]
 [Refill] package contains [one] [1] [two] [2] [three] [3] [four] [4] [various numbers] [wet] [pre-moistened] [wipe]
 [refill[s]] [roll[s]]
 Refill [size] [pack] [value pack]
 Refillable [with ___# wipes] [dispenser] refill [pack] [for dispenser]
 Requires no mixing or measuring and are ready-to-use
 Resealable [stay-moist] pouch [package] [container] inside
 Reuse your [empty] canisters [again [and again] [!]
 Sample
 Scrubbing power of a sponge in a disinfecting wipe
 Strong, durable [diamond] [-] [embossed] textured wipe deodorizes
 Strong, durable low-lint wipe designed for sensitive hard, nonporous equipment surfaces
 Suitable for use on equipment requiring alcohol-based products
 Tear at perforation
 Textured [diamond] [-] [embossed] design deodorizes hard nonporous surfaces
 Thick, large wipe disinfects
 Thick, textured wipe with [diamond] [-] [embossed] design
 This [outer] [selling] [package] [container][canister] contains x% post consumer [material][plastic][resin]
 Time to reorder
 Trial
 Tub refill
 Tub with pop-up action
 Twin pack
 Use by *[insert date]*
 Use on hard nonporous surfaces only: [stainless steel] [Formica®] [glass] [glass tables] [glazed tile] [Test wipe on
 small inconspicuous area first.] [Formica® is a registered trademark of The Diller Corporation.] [Use to]
 refill[s] [count] [wipe] canisters or tubs
 Value
 Versatile
 [Virucidal*]
 Virucide* including *HIV-1, HBV and HCV* applications and effective against Staphylococcus aureus
 Wet wipes
 Where reduction of cross contamination between treated surfaces is of prime importance
 Wipe [material] made from [x] % [sustainable] [ingredients] [fibers] *[May be used only when cellulose wipe
 material used]*
 [Wipes out] [Kills] [common] [household] [bacteria] [viruses] [germs*]
 [Wipes out] [Kills] [the] flu virus, (Influenza A/Hong Kong)
 [Wipes out] [Kills] viruses* and bacteria [including the flu virus, (Influenza A/Hong Kong)]
 Wipes out SARS-CoV-2 [Coronavirus] [the virus that causes COVID-19] [in 3 minutes]^g
 [Wiping] [soft] side for disinfecting
 X% [more] [wipes] [free] [vs. Z count] [canisters] [packs]
 X% reduction in packaging [material]

THE INFORMATION IN BOX IS NOT PART OF THE LABELING

[] - Statements in brackets are optional. Italicize words in brackets are instructional. Italicized words in brackets are not included
 A footnote can be used to list organisms. Bacteria and virus can be separated into footnotes 1 and 2 if desired.
 When organisms are listed next to a claim, the organisms may be listed in a footnote instead of directly next to the claim
 +All pesticidal "germ" claims must be linked to bacteria (minimum: Salmonella and Staph) and at least one virus. For example: Front panel: "Kills germs*" Back
 panel: "+Kills Salmonella enterica, Staphylococcus aureus, Herpes Simplex Type 2, and Influenza A/Hong Kong"
 Sequence and placement of phrases is optional unless specified in 40 CFR 156.10.
 Capitalization, plurals or singular, bold and italics are all variable unless specified in 40 CFR
 The terms "Wipe(s)", "Towel(s)", "Towelette(s)" and "Cloth(s)" can be used interchangeably throughout except for the product primary brand name which can be
 only changed by notification or amendment.
 The word "and" and symbol "&" can be used interchangeably
 All directions may be written in numbered form or in paragraph form
 Graphics, symbols, and logos may vary in color.

April 29, 2022

[Note: The following claims can be used only for 6 months]

[Better] [New] [Improved] [Stronger] [Thicker] Wipe [!]

[Better] [new] [&] [improved] [dispensing] lid [closure] [cap] [package] [dispensing] [better [than before]

[New] [Package] [packaging] uses [x%] less material (plastic) [then] [when compared to] [regular] containers [or canisters]

New and improved

New larger, thicker wipe [with [diamond] [-] [embossed] design]

New thicker and [or with] larger [diamond] [-] [embossed] [wipe cleans more surface area]

[Now] [Reinforced] [With] Quilted [strength]

Now with [%] more towel than the previous product *[use this for 6 months after converting to larger towel]*

Now with [#] more wipes than the previous product *[use this for 6 months after converting to a larger number of towels]*

[Scrubs] (&) [cleans] [better than ever]

[Stronger] more durable [wipe]

Thick[er] [wipe] [with] cloth-like texture

X% [Bigger] [larger] [quilted] wipes

[x%] thicker wipes

3 minute claims:

Disinfects and deodorizes [in 3 minutes]

Disinfects hard, nonporous surfaces [in 3 minutes]

Disinfects [in [just] three [3] minutes]

Kills bacteria in 3 minutes

Kills *[list one or more organisms]* [in 3 minutes]

The 3-minute germicidal wipe [disinfectant wipe]

Thick, heavy duty wipes are bactericidal and Virucidal* in 3 minutes

[Wipes out] [Kills] [eliminates 99.9%] *[list organisms]* in [just] [3 minutes]

1 *[A footnote can be used to list organisms shown on page*

2. *Bacteria and virus can be separated into footnotes 1 and 2 if desired.]*

* All "germ" claims must be linked to bacteria (minimum: Salmonella and Staph) and at least one virus with an asterisk or footnote. For example: Front panel: "Effective against household germs*" Back panel: "**Kills Salmonella enterica, Staphylococcus aureus, Herpes Simplex Type 2, and Influenza A/Hong Kong.

¢[on] hard, nonporous surfaces [of] [identified on this label]

THE INFORMATION IN BOX IS NOT PART OF THE LABELING

[] - Statements in brackets are optional. Italicize words in brackets are instructional. Italicized words in brackets are not included

A footnote can be used to list organisms. Bacteria and virus can be separated into footnotes 1 and 2 if desired.

When organisms are listed next to a claim, the organisms may be listed in a footnote instead of directly next to the claim

+All pesticidal "germ" claims must be linked to bacteria (minimum: Salmonella and Staph) and at least one virus. For example: Front panel: "Kills germs*" Back panel: "*Kills Salmonella enterica, Staphylococcus aureus, Herpes Simplex Type 2, and Influenza A/Hong Kong"

Sequence and placement of phrases is optional unless specified in 40 CFR 156.10.

Capitalization, plurals or singular, bold and italics are all variable unless specified in 40 CFR

The terms "Wipe(s)", "Towel(s)", "Towelette(s)" and "Cloth(s)" can be used interchangeably throughout except for the product primary brand name which can be only changed by notification or amendment.

The word "and" and symbol "&" can be used interchangeably

All directions may be written in numbered form or in paragraph form

Graphics, symbols, and logos may vary in color.

April 29, 2022

CLEANING: *[cleaning directions and claims have been grouped on this page (they were previously incorporated into other parts of the label)]*

DIRECTIONS FOR USE:

CLEANING: Wipe surface with towelette until clean. Let air dry.

CLAIMS:

An effective method to clean against odor-causing organisms on hard nonporous surfaces listed on this label.
Cleans
Cleans and disinfects
Cleans, deodorizes, and kills common household germs*
Cleans, disinfects and deodorizes
Cleans grocery carts and shopping carts
[Diamond] [-] [embossed] pattern [texture] provides effective cleaning
Leaves [bathroom] [office] clean [and disinfected] [and smelling fresh]
Leaves bathroom fresh and clean in [just] minutes
Multi-purpose cleaner [Multi [-refill] pack]
New thicker and larger [diamond] [-] [embossed] wipe cleans more surface area *[use this for 6 months after converting to larger towel]*
Perfect for cleaning [and disinfecting] around the toilet
Premoistened [wet] household cleaning wipe
Premoistened with specially formulated cleaners to handle daily clean-ups without bottles, sponges or buckets
[This product is]
Easy [and convenient] way to clean [and disinfect]
Easy way to clean [and disinfect] bathroom –or- exterior toilet surfaces
Easy way to clean [and disinfect] hard, nonporous surfaces
[So] surfaces are more than [just] [clean] [they're] [disinfected]
[Soft] side for [cleaning] dirt away
Strong, durable [diamond] [-] [embossed] textured wipe cleans [and deodorizes]
Textured wipe for effective cleaning
Textured [diamond] [-] [embossed] design cleans hard nonporous surfaces
Textured [diamond] [-] [embossed] design helps remove soil from surfaces
[Textured] [scrubby] [rough] side for [scrubbing] [cleaning] [removing] [wiping] [tough] [stains] [soils] [messes]
Thick, large wipe cleans
Wipe away odors
[Wipes out] [Kills] germs* that cause odors
[Wipes out] [Kills] germs* [while it cleans]
[Wiping] [soft] side for [wiping] dirt away [and disinfecting]

THE INFORMATION IN BOX IS NOT PART OF THE LABELING

[] - Statements in brackets are optional. Italicize words in brackets are instructional. Italicized words in brackets are not included
A footnote can be used to list organisms. Bacteria and virus can be separated into footnotes 1 and 2 if desired.
When organisms are listed next to a claim, the organisms may be listed in a footnote instead of directly next to the claim
+All pesticidal "germ" claims must be linked to bacteria (minimum: Salmonella and Staph) and at least one virus. For example: Front panel: "Kills germs*" Back panel: "+Kills Salmonella enterica, Staphylococcus aureus, Herpes Simplex Type 2, and Influenza A/Hong Kong"
Sequence and placement of phrases is optional unless specified in 40 CFR 156.10.
Capitalization, plurals or singular, bold and italics are all variable unless specified in 40 CFR
The terms "Wipe(s)", "Towel(s)", "Towelette(s)" and "Cloth(s)" can be used interchangeably throughout except for the product primary brand name which can be only changed by notification or amendment.
The word "and" and symbol "&" can be used interchangeably
All directions may be written in numbered form or in paragraph form
Graphics, symbols, and logos may vary in color.

April 29, 2022

[The following graphics and statements are optional. They may be placed anywhere on label/container.]



DO NOT FLUSH

NOT A BABY WIPE

NOT FOR USE ON SKIN



THE INFORMATION IN BOX IS NOT PART OF THE LABELING

[] - Statements in brackets are optional. Italicize words in brackets are instructional. Italicized words in brackets are not included

A footnote can be used to list organisms. Bacteria and virus can be separated into footnotes 1 and 2 if desired.

When organisms are listed next to a claim, the organisms may be listed in a footnote instead of directly next to the claim

+All pesticidal "germ" claims must be linked to bacteria (minimum: Salmonella and Staph) and at least one virus. For example: Front panel: "Kills germs+" Back panel: "+Kills Salmonella enterica, Staphylococcus aureus, Herpes Simplex Type 2, and Influenza A/Hong Kong"

Sequence and placement of phrases is optional unless specified in 40 CFR 156.10.

Capitalization, plurals or singular, bold and italics are all variable unless specified in 40 CFR

The terms "Wipe(s)", "Towel(s)", "Towelette(s)" and "Cloth(s)" can be used interchangeably throughout except for the product primary brand name which can be only changed by notification or amendment.

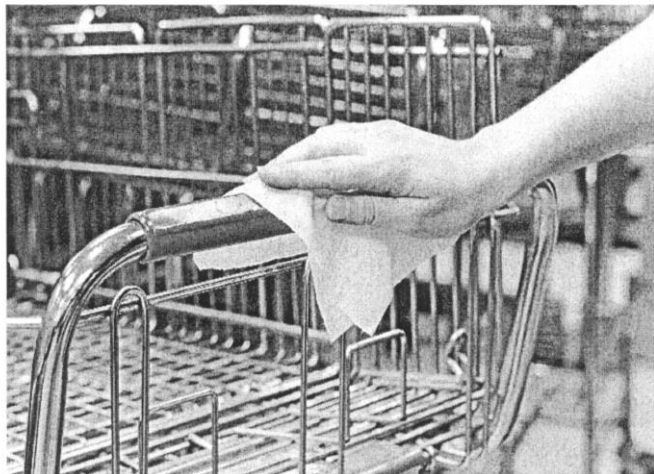
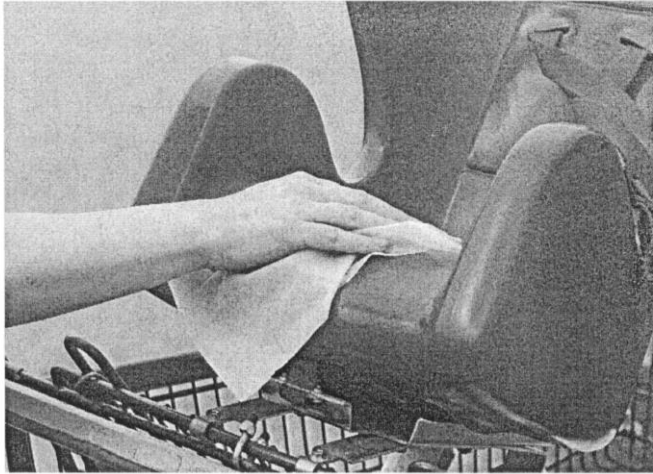
The word "and" and symbol "&" can be used interchangeably

All directions may be written in numbered form or in paragraph form

Graphics, symbols, and logos may vary in color.

April 29, 2022

[The following graphics and statements are optional. They may be placed anywhere on label/container.]



THE INFORMATION IN BOX IS NOT PART OF THE LABELING

[] - Statements in brackets are optional. Italicize words in brackets are instructional. Italicized words in brackets are not included

A footnote can be used to list organisms. Bacteria and virus can be separated into footnotes 1 and 2 if desired.

When organisms are listed next to a claim, the organisms may be listed in a footnote instead of directly next to the claim

+All pesticidal "germ" claims must be linked to bacteria (minimum: Salmonella and Staph) and at least one virus. For example: Front panel: "Kills germs+" Back panel: "+Kills Salmonella enterica, Staphylococcus aureus, Herpes Simplex Type 2, and Influenza A/Hong Kong"

Sequence and placement of phrases is optional unless specified in 40 CFR 156.10.

Capitalization, plurals or singular, bold and italics are all variable unless specified in 40 CFR

The terms "Wipe(s)", "Towel(s)", "Towelette(s)" and "Cloth(s)" can be used interchangeably throughout except for the product primary brand name which can be only changed by notification or amendment.

The word "and" and symbol "&" can be used interchangeably

All directions may be written in numbered form or in paragraph form

Graphics, symbols, and logos may vary in color.

April 29, 2022



Not a Skin Wipe.
For Use on Hard Surfaces Only.



Not a Skin Wipe.
For Use on Hard Surfaces Only.

THE INFORMATION IN BOX IS NOT PART OF THE LABELING

[] - Statements in brackets are optional. Italicize words in brackets are instructional. Italicized words in brackets are not included
 A footnote can be used to list organisms. Bacteria and virus can be separated into footnotes 1 and 2 if desired.
 When organisms are listed next to a claim, the organisms may be listed in a footnote instead of directly next to the claim
 +All pesticidal "germ" claims must be linked to bacteria (minimum: Salmonella and Staph) and at least one virus. For example: Front panel: "Kills germs+" Back panel: "+Kills Salmonella enterica, Staphylococcus aureus, Herpes Simplex Type 2, and Influenza A/Hong Kong"
 Sequence and placement of phrases is optional unless specified in 40 CFR 156.10.
 Capitalization, plurals or singular, bold and italics are all variable unless specified in 40 CFR
 The terms "Wipe(s)", "Towel(s)", "Towelette(s)" and "Cloth(s)" can be used interchangeably throughout except for the product primary brand name which can be only changed by notification or amendment.
 The word "and" and symbol "&" can be used interchangeably
 All directions may be written in numbered form or in paragraph form
 Graphics, symbols, and logos may vary in color.

April 29, 2022

[The following graphics and statements are optional. They may be placed anywhere on label/container.]



[One side scrubs]
[One side wipes]



THE INFORMATION IN BOX IS NOT PART OF THE LABELING

[] - Statements in brackets are optional. Italicize words in brackets are instructional. Italicized words in brackets are not included

A footnote can be used to list organisms. Bacteria and virus can be separated into footnotes 1 and 2 if desired.

When organisms are listed next to a claim, the organisms may be listed in a footnote instead of directly next to the claim

+All pesticidal "germ" claims must be linked to bacteria (minimum: Salmonella and Staph) and at least one virus. For example: Front panel: "Kills germs*" Back panel: "+Kills Salmonella enterica, Staphylococcus aureus, Herpes Simplex Type 2, and Influenza A/Hong Kong"

Sequence and placement of phrases is optional unless specified in 40 CFR 156.10.

Capitalization, plurals or singular, bold and italics are all variable unless specified in 40 CFR

The terms "Wipe(s)", "Towel(s)", "Towelette(s)" and "Cloth(s)" can be used interchangeably throughout except for the product primary brand name which can be only changed by notification or amendment.

The word "and" and symbol "&" can be used interchangeably

All directions may be written in numbered form or in paragraph form

Graphics, symbols, and logos may vary in color.

April 29, 2022

[The following are company logos for use on PDI product labels. The purpose of the logo is for easy recognition of PDI products in the marketplace.]



THE INFORMATION IN BOX IS NOT PART OF THE LABELING

[] - Statements in brackets are optional. Italicize words in brackets are instructional. Italicized words in brackets are not included

A footnote can be used to list organisms. Bacteria and virus can be separated into footnotes 1 and 2 if desired.

When organisms are listed next to a claim, the organisms may be listed in a footnote instead of directly next to the claim

+All pesticidal "germ" claims must be linked to bacteria (minimum: Salmonella and Staph) and at least one virus. For example: Front panel: "Kills germs+" Back panel: "+Kills Salmonella enterica, Staphylococcus aureus, Herpes Simplex Type 2, and Influenza A/Hong Kong"

Sequence and placement of phrases is optional unless specified in 40 CFR 156.10.

Capitalization, plurals or singular, bold and italics are all variable unless specified in 40 CFR

The terms "Wipe(s)", "Towel(s)", "Towelette(s)" and "Cloth(s)" can be used interchangeably throughout except for the product primary brand name which can be only changed by notification or amendment.

The word "and" and symbol "&" can be used interchangeably

All directions may be written in numbered form or in paragraph form

Graphics, symbols, and logos may vary in color.

April 29, 2022