

9480-6

11/30/2004

Page 186

SANI-CLOTH® PLUS

GERMICIDAL DISPOSABLE CLOTH

ACTIVE INGREDIENTS:n-Alkyl (68% C₁₂, 32% C₁₄) dimethyl ethylbenzyl ammonium chlorides..... 0.125%n-Alkyl (60% C₁₄, 30% C₁₆, 5% C₁₂, 5% C₁₈) dimethyl benzyl ammonium chlorides..... 0.125%

Isopropyl Alcohol..... 14.850%

OTHER INGREDIENTS..... 84.900%**TOTAL**..... 100.000%

KEEP OUT OF REACH OF CHILDREN

CAUTION

See back [side] panel for additional precautionary statements

Net weight

Net contents # of cloths and size

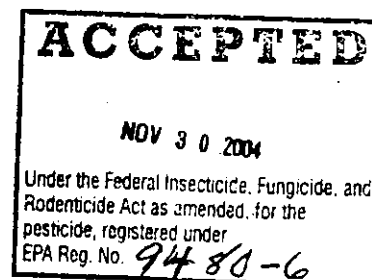
EPA Reg. No.: 9480-6

EPA Est. No.: 9480-NY-1

or

EPA Est. No. A=9480-NY-1, B=9480-IN-1

Alpha character will precede batch code on product



Manufactured by:

PDI, The Healthcare Division of Nice-Pak Products, Inc.

Two Nice-Pak Park, Orangeburg, NY 10962-1376

Precautionary Statements**Hazards to humans and domestic animals**

Caution. Causes moderate eye irritation. Avoid contact with eyes or clothing. Wash thoroughly with soap and water after handling.

First aid

If in eyes: Hold eye open and rinse slowly and gently with water for 15-20 minutes. Remove contact lenses, if present, after the first 5 minutes, then continue rinsing eye. Call a poison control center or doctor for treatment advice.

Have the product container or label with you when calling a poison control center or doctor, or going for treatment.

Physical or chemical hazard

Combustible. Do not use or store near heat or open flame. Do not use on natural marble, windows, unpainted wood, brass, clear plastic or colored grout.

Storage and disposal**For canisters:**

Storage: Do not store near heat or open flame. When not in use keep center cap of lid closed to prevent moisture loss.

Towelette Disposal: Do not reuse towelette. Dispose of used towelette in trash. Do not flush in toilet.

Dispenser Disposal: Do not reuse empty container. Wrap container and put in trash collection.

For packets and travel packs:

Storage: Do not store near heat or open flame.

Towelette Disposal: Do not reuse towelette. Dispose of used towelette in trash. Do not flush in toilet.

Travel Pack [or Packet] Disposal: Put empty travel pack [or packet] in trash collection.

The terms "wipe(s)", "towel(s)", "towelette(s)", and "cloth(s)" and the product name may be used interchangeably except for within the product primary brand name.

F:\shared\labels\pdi\9480-6\9480-6 111704.doc

Version: Nov 17, 2004

2 8 6

Bactericidal

Virucidal*

*Herpes Simplex Type 2, Influenza A2/Hong Kong, Respiratory Syncytial Virus (RSV)

Virucidal against Herpes Simplex Type 2, Influenza A2/Hong Kong, Respiratory Syncytial Virus (RSV),

HIV-1[†], Hepatitis B Virus[†]

Tuberculocidal

[Product name] kills bacteria listed on this label

Escherichia coli (E. coli) O157:H7

Methicillin Resistant Staphylococcus aureus (MRSA)

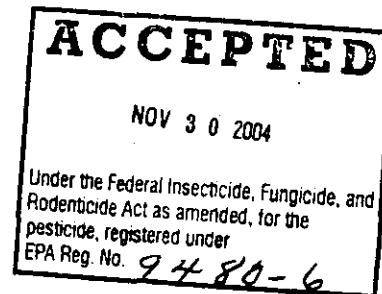
Mycobacterium bovis BCG (Tuberculosis)

Pseudomonas aeruginosa

Staphylococcus aureus

Salmonella choleraesuis

Vancomycin Resistant Enterococcus faecalis (VRE)



[Product name] is virucidal against Herpes Simplex Type 2, Influenza A2/Hong Kong, Respiratory Syncytial Virus (RSV)

†KILLS HIV-1 (AIDS VIRUS) AND HEPATITIS B VIRUS (HBV) ON THE PRE-CLEANED ENVIRONMENTAL SURFACES/OBJECTS AND PRE-CLEANED EXTERNAL SURFACES OF ULTRASOUND TRANSDUCERS AND PROBES PREVIOUSLY SOILED WITH BLOOD/BODY FLUIDS in two (2) minutes at room temperature (68°- 77°F) or (20°- 25°C) in healthcare or other settings in which there is an expected likelihood of soiling of inanimate surfaces/objects with blood or body fluids, and in which the surfaces/objects likely to be soiled with blood or body fluids can be associated with the potential for transmission of Human Immunodeficiency Virus Type 1 (HIV-1) (associated with AIDS) and Hepatitis B Virus (HBV).

A quaternary/alcohol solution impregnated in a wiping cloth. A non-woven disposable cloth for use in hospitals and other critical care areas where the control of the hazards of cross-contamination between treated surfaces is required. Use on hard non-porous surfaces and equipment listed on this label made of stainless steel, plastic, Formica® and glass. Some organisms are removed from the surface by thoroughly wiping the surface with the wipe. Most remaining organisms are killed within five (5) minutes by exposure to the liquid in the wipe.

Areas of Use:

Hospital and Healthcare Settings: Ambulances, Anesthesia, CAT Labs, CCU, Central Supply, Clinics, Dental Offices, Dialysis Clinics, Doctors Offices, Emergency Rooms, E.R., Healthcare settings, Home Health Care, Hospices, Hospitals, ICU, Laboratory, Laundry rooms, Neonatal Intensive Care Units (NICU), Newborn nursery, Nursing homes, Operating Rooms, Pediatrics, Pediatric Intensive Care Units (PICU), Physical therapy, Physician's offices, Radiology, Recovery Rooms, Rehabilitation, Respiratory therapy, Surgery, Transport vehicles and X-Ray.

and/or

Critical Care Areas: CCU, Emergency Rooms, E.R., ICU, Neonatal Intensive Care Units (NICU), Operating Rooms, Pediatric Intensive Care Units (PICU) and Surgery.

and

Hospital, Healthcare, and Critical Care Use Sites: May be used on hard non-porous surfaces of: bed railings; cabinets, carts, chairs; counters, exam tables; gurneys; isolettes, IV poles; stethoscopes; stretchers; tables; telephones; toilet seats; and hard non-porous outside surfaces of: apheresis machines, diagnostic equipment, dialysis machines; patient monitoring equipment, patient support and delivery equipment, toilets; and ultrasound transducers and probes.

Grocery Stores or Shopping Centers or Delicatessens: Disinfects grocery cart handles and grocery cart child seats. Disinfects shopping cart handles and child seats. Cleans grocery carts or shopping carts.

Nursery or Daycare Centers: Changing tables, cribs, diaper pails, trash cans, toys and other hard, non-porous surfaces listed on this label.

The terms "wipe(s)", "towel(s)", "towelette(s)", and "cloth(s)" and the product name may be used interchangeably except for within the product primary brand name.

F:\shared\labels\pdi\9480-6\9480-6 111704.doc

Version: Nov 17, 2004

3 8 6

[Areas of Use continued]

Bathroom: Bathtubs, bathroom fixtures, shower stalls, sinks, tiles, toilet seats and vanity tops, and other hard non-porous surfaces listed on this label.

ACCEPTED

Health club facilities: Gym equipment and other hard non-porous surfaces listed on this label.

N 0 2004

Schools: Cabinets, chairs, computers, counters, countertops, desks, desktops, doorknobs, fax machines, garbage cans, headsets, keyboards, railings, seats, sinks, tables, tabletops, telephones, trashcans, and other hard non-porous surfaces listed on this label.

Under the Federal Insecticide, Fungicide, and
Rodenticide Act as amended, for the
pesticide, registered under
EPA Reg. No. 9480-6

This product is not to be used as a terminal sterilant/high level disinfectant on any surface or instrument that (1) is introduced directly into the human body, either into or in contact with the bloodstream or normally sterile areas of the body, or (2) contacts intact mucous membranes but which does not ordinarily penetrate the blood barrier or otherwise enter normally sterile areas of the body. This product may be used to pre-clean or decontaminate critical or semi-critical medical devices prior to sterilization or high level disinfection.

Directions for use

It is a violation of Federal law to use this product in a manner inconsistent with its labeling.

Dispenser directions:

Canister directions:

To start feed: Remove lid and discard inner seal from canister. Find center of wipe roll, remove first wipe for use, twist corner of next wipe into a point and thread through the hole in the canister lid. Pull through about one inch. Replace lid. Dispense remaining wipes as necessary by pulling out at an angle. When not in use keep center cap of lid closed to prevent moisture loss.

Travel pack directions:

Peel back label slowly. Pull out wipes as needed and reseal label. Unfold wipe.

To disinfect nonfood contact surfaces only:

Use a wipe to remove heavy soil. Unfold a clean wipe and thoroughly wet surface. Treated surface must remain visibly wet for a full five (5) minutes. Use additional wipe(s) if needed to assure continuous five (5) minute wet contact time. Let air dry.

Ultrasound transducers and probes:

For use on external surfaces of ultrasound transducers and probes only.

To disinfect: Pre-clean gel from external surface of ultrasound transducer or probe to be disinfected by using a clean washcloth. Then thoroughly wet the probe with a towelette. Treated surface must remain visibly wet for a full five (5) minutes. Use additional wipe(s) if needed to assure continuous five (5) minute wet contact time. Let air dry.

***SPECIAL INSTRUCTIONS FOR CLEANING AND DECONTAMINATION AGAINST HIV-1 AND HEPATITIS B VIRUS OF SURFACES/OBJECTS SOILED WITH BLOOD/BODY FLUIDS**

Personal protection: When using this product, wear disposable protective gloves, protective gowns, face masks, or eye coverings as appropriate when handling HIV-1 (AIDS Virus) or Hepatitis B Virus (HBV) infected blood or body fluids.

Cleaning procedure: All blood and other body fluids must be thoroughly cleaned from surfaces and objects before disinfection by the germicidal wipe. Open, unfold first germicidal cloth to remove heavy soil.

Disposal of infectious materials: Dispose of used towelette in accordance with local regulations for infectious waste disposal.

Contact time: Use second germicidal cloth to thoroughly wet surface. Allow to remain wet two (2) minutes, let air dry. Although efficacy at a two (2) minute contact time has been shown to be adequate against HIV-1 and Hepatitis B Virus this time is not sufficient for the other organisms listed on this label. Therefore a five (5) minute wet contact time must be used for other listed organisms.

To clean: Wipe surfaces and let air dry.

The terms "wipe(s)", "towel(s)", "towelette(s)", and "cloth(s)" and the product name may be used interchangeably except for within the product primary brand name.

4 8 6

Optional Claims

An effective method to clean, deodorize and disinfect against odor-causing organisms on hard non-porous surfaces listed on this label.

An effective way to disinfect hard, non-porous environmental surfaces listed on this label.

A non-woven disposable cloth for use in hospitals and other critical care areas where control of the hazards of cross contamination between treated surfaces is required.

Antibacterial

Antimicrobial

A One Step[†] Cleaner/Disinfectant (except precleaning is required for blood and body fluids)

Are pre-measured to have the recommended amount of germicidal solution, wipe after wipe.

Assures proper dilution strength, product effectiveness and standardized technique.

Cellulosic non-woven disposable cloth.

Cleans and disinfects

Cleans, deodorizes, and kills common household germs

Cleans, disinfects and deodorizes

Cleans grocery carts and shopping carts

Convenient

Disinfects grocery cart handles or shopping cart handles or grocery cart child seats or shopping cart child seats

Disinfects hard non-porous environmental surfaces listed on this label

Does not produce mist or overspray

Easy One Step[†] Cleaning and Disinfecting (except precleaning is required for blood and body fluids)

No measuring

No mixing

Non-woven disposable cloth

Premeasured

Premoistened

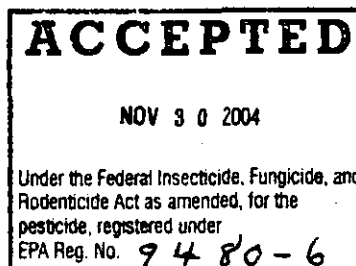
Ready to Use

Require no mixing or measuring and are ready-to-use

Tear at perforation

Time to reorder

Where control of the hazards of cross contamination between treated surfaces is of prime importance



The terms "wipe(s)", "towel(s)", "towelette(s)", and "cloth(s)" and the product name may be used interchangeably except for within the product primary brand name.

F:\shared\labels\pdf\9480-6\9480-6 111704.doc

Version: Nov 17, 2004

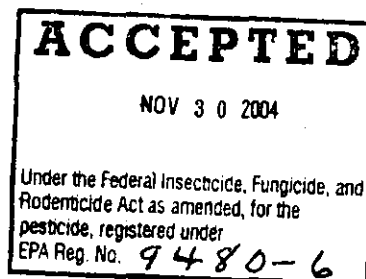
[The following graphics and statements are optional.
They may be placed anywhere on label/container.]



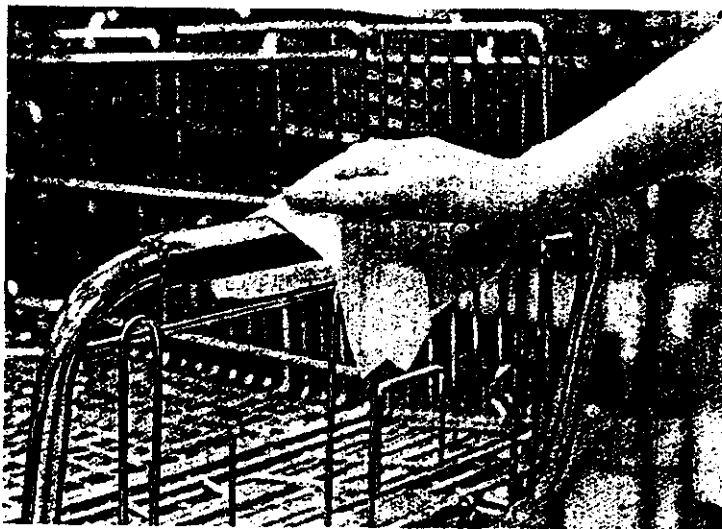
[This graphic shows use of the wipe dispenser.]

NOT A BABY WIPE

NOT FOR USE ON SKIN



The terms "wipe(s)", "towel(s)", "towelette(s)", and "cloth(s)" and the product name may be used interchangeably except for within the product primary brand name.

**ACCEPTED**

NOV 30 2004

Under the Federal Insecticide, Fungicide, and
Rodenticide Act as amended, for the
pesticide, registered under
EPA-Reg. No. 9480-6

The terms "wipe(s)", "towel(s)", "towelette(s)", and "cloth(s)" and the product name may be used interchangeably except for within the product primary brand name.

F:\shared\labels\pdi\9480-6\9480-6 111704.doc

Version: Nov 17, 2004