



UNITED STATES ENVIRONMENTAL PROTECTION AGENCY  
WASHINGTON, DC 20460

OFFICE OF CHEMICAL SAFETY  
AND POLLUTION PREVENTION

June 16, 2022

Jean Claude Marcelin  
Senior Regulatory Affairs Manager  
Professional Disposables International (PDI) Inc.  
Electronic Transmittal: jmarcelin@pdipdi.com

Subject: Notification per PRN 98-10 – Minor Label Changes  
Product Name: SANI-CLOTH GERMICIDAL DISPOSABLE CLOTH  
EPA Registration Number: 9480-5  
Received Date: June 7, 2022  
Action Case Number: 00370254

Dear Jean Claude Marcelin:

The Agency is in receipt of your Application for Pesticide Notification under Pesticide Registration Notice (PRN) 98-10 for the above referenced product. The Antimicrobials Division (AD) has conducted a review of this request for its applicability under PRN 98-10 and finds that the action requested falls within the scope of PRN 98-10.

The label submitted with the application has been stamped “Notification” and will be placed in our records.

Should you wish to add/retain a reference to the company’s website on your label, then please be aware that the website becomes labeling under the Federal Insecticide Fungicide and Rodenticide Act and is subject to review by the Agency. If the website is false or misleading, the product would be misbranded and unlawful to sell or distribute under FIFRA section 12(a)(1)(E). 40 CFR 156.10(a)(5) lists examples of statements EPA may consider false or misleading. In addition, regardless of whether a website is referenced on your product’s label, claims made on the website may not substantially differ from those claims approved through the registration process. Therefore, should the Agency find or if it is brought to our attention that a website contains false or misleading statements or claims substantially differing from the EPA approved registration, the website will be referred to the EPA’s Office of Enforcement and Assurance.

If you have any questions, you may contact Joe Daniels via email at [daniels.joseph@epa.gov](mailto:daniels.joseph@epa.gov).

Sincerely,

A handwritten signature in black ink, appearing to read "John Hebert".

for

John Hebert, Branch Chief  
Regulatory Management Branch 1  
Antimicrobials Division (7510M)  
Office of Pesticide Programs

# SANI-CLOTH® GERMICIDAL DISPOSABLE CLOTH

**[Previously approved Alternate Brand Names:]**

CVS Health® Disinfecting Wipes  
DISINFECTING FLOOR CLOTHS  
DISINFECTING MOPPING CLOTHS  
DISINFECTING WET FLOOR CLOTHS  
DISINFECTING WET MOPPING CLOTHS  
DISINFECTING WIPES  
DISINFECTING WIPES FRESH AIR SCENT  
DISINFECTING WIPES LEMON SCENT  
GRIME BOSS® BASICS DISINFECTING SCRUBBING WIPES  
GRIME BOSS® BASICS DISINFECTING WET MOPPING CLOTHS  
GRIME BOSS® BASICS DISINFECTING WIPES  
GRIME BOSS® DISINFECTING FLOOR WIPES  
GRIME BOSS® DISINFECTING SCRUBBING WIPES  
GRIME BOSS® DISINFECTING WET MOPPING CLOTHS  
GRIME BOSS® DISINFECTING WIPES  
GRIME BOSS® HOUSEHOLD SURFACE WIPES  
GRIME BOSS® DISINFECTING WET FLOOR CLOTHS  
GRIME BOSS® DISINFECTING WET FLOOR WIPES  
GRIME BOSS® DISINFECTING WET FLOOR SWEEPER REFILLS

GRIME BOSS® SPORTS EQUIPMENT WIPES  
GRIME BOSS® EQUIPMENT WIPES  
GRIME BOSS® SPORTS EQUIPMENT DISINFECTING WIPES  
GRIME BOSS® EQUIPMENT DISINFECTING WIPES  
GRIME BOSS® DISINFECTING SPORTS EQUIPMENT WIPES  
GRIME BOSS® DISINFECTING EQUIPMENT WIPES  
GRIME BOSS® Multipurpose Disinfecting Wipes  
GRIME BOSS® Scrubbing Household Disinfecting Wipes  
GRIME BOSS® Wipes

KIRKLAND SIGNATURE™ DISINFECTING WET FLOOR CLOTHS  
KIRKLAND SIGNATURE™ DISINFECTING WET FLOOR WIPES  
KIRKLAND SIGNATURE™ DISINFECTING WET FLOOR SWEEPER REFILLS

KIRKLAND SIGNATURE™ SPORTS EQUIPMENT WIPES  
KIRKLAND SIGNATURE™ EQUIPMENT WIPES  
KIRKLAND SIGNATURE™ SPORTS EQUIPMENT DISINFECTING WIPES

KIRKLAND SIGNATURE™ EQUIPMENT DISINFECTING WIPES

KIRKLAND SIGNATURE™ DISINFECTING SPORTS EQUIPMENT WIPES

KIRKLAND SIGNATURE™ DISINFECTING EQUIPMENT WIPES  
Kirkland Signature™ Disinfecting Wipes

HDX™ DISINFECTING WET FLOOR CLOTHS  
HDX™ DISINFECTING WET FLOOR WIPES  
HDX™ DISINFECTING WET FLOOR SWEEPER REFILLS  
HDX™ ANTIBACTERIAL DISINFECTING WIPES 1

SANI-CLOTH® AF GERMICIDAL DISPOSABLE WIPE[S]  
SANI-CLOTH® DISINFECTING WIPES  
SANI-CLOTH® HOUSEHOLD SURFACE WIPES  
SANI PROFESSIONAL® [BRAND] BATHROOM DISINFECTING WIPE[S]  
SANI PROFESSIONAL® [BRAND] DISINFECTING MULTI-SURFACE WIPE[S]  
SANI PROFESSIONAL® [BRAND] SANI CART WIPE[S]  
SANI PROFESSIONAL® [BRAND] SANI CLOTH DISINFECTING WIPE[S]  
SANI PROFESSIONAL® [BRAND] SANI-SURFACE DISINFECTING WIPE[S]  
SANI PROFESSIONAL® [BRAND] TABLE TURNERS DISINFECTING WIPES  
SANI PROFESSIONAL® [BRAND] TABLE TURNERS SANITIZING WIPES  
SANI-SURFACE DISINFECTING FLOOR CLOTHS [WIPES]  
SANI-SURFACE DISINFECTING WET FLOOR CLOTHS [WIPES]  
SANI-SURFACE HOUSEHOLD DISINFECTING WIPES

UP&UP® DISINFECTING WET FLOOR CLOTHS  
UP&UP® DISINFECTING WET FLOOR WIPES  
UP&UP® DISINFECTING WET FLOOR SWEEPER REFILLS  
UP&UP® SPORTS EQUIPMENT WIPES  
UP&UP® EQUIPMENT WIPES  
UP&UP® SPORTS EQUIPMENT DISINFECTING WIPES  
UP&UP® EQUIPMENT DISINFECTING WIPES  
UP&UP® DISINFECTING SPORTS EQUIPMENT WIPES  
UP&UP® DISINFECTING EQUIPMENT WIPES

GREAT VALUE DISINFECTING WET FLOOR CLOTHS  
GREAT VALUE DISINFECTING WET FLOOR WIPES  
GREAT VALUE DISINFECTING WET FLOOR SWEEPER REFILLS  
GREAT VALUE SPORTS EQUIPMENT WIPES  
GREAT VALUE EQUIPMENT WIPES  
GREAT VALUE SPORTS EQUIPMENT DISINFECTING WIPES  
GREAT VALUE EQUIPMENT DISINFECTING WIPES  
GREAT VALUE DISINFECTING SPORTS EQUIPMENT WIPES  
GREAT VALUE DISINFECTING EQUIPMENT WIPES

BERKLEY JENSEN® DISINFECTING WET FLOOR CLOTHS  
BERKLEY JENSEN® DISINFECTING WET FLOOR WIPES  
BERKLEY JENSEN® DISINFECTING WET FLOOR SWEEPER REFILLS  
BERKLEY JENSEN® SPORTS EQUIPMENT WIPES  
BERKLEY JENSEN® EQUIPMENT WIPES  
BERKLEY JENSEN® SPORTS EQUIPMENT DISINFECTING WIPES  
BERKLEY JENSEN® EQUIPMENT DISINFECTING WIPES  
BERKLEY JENSEN® DISINFECTING SPORTS EQUIPMENT WIPES  
BERKLEY JENSEN® DISINFECTING EQUIPMENT WIPES

Staples Disinfecting Wipes<sub>1</sub>  
Staples Disinfecting Wipes<sub>2</sub>  
Total Home® Disinfecting Wipes<sub>2</sub>

The Original Wet-Nap® Wipes  
The Original Wet-Nap® Disinfecting Wipes

## NOTIFICATION

9480-5

The applicant has certified that no changes, other than those reported to the Agency have been made to the labeling. The Agency acknowledges this notification by letter dated:

06/16/2022

### **THE INFORMATION IN THIS BOX IS NOT PART OF THE LABELING**

Statements in brackets [ ] are optional or instructional. Statements in italics are instructional. The terms "wipe(s)", "towel(s)", "towelette(s)" and "cloth(s)" can be used interchangeably throughout except for the product primary brand name which can be only changed by notification or amendment. The word "and" and symbol "&" can be used interchangeably. Capitalization may be used interchangeably. Plurals or singular, bold and italics are all variable unless specified in 40 CFR. Graphics, symbols, and logos may vary in color. Pictures of use sites/surfaces and dispensing directions, are simply descriptive and may be interchanged for other similar images. All use surfaces and/or use sites on the label may be used in conjunction with an image of the use surface and/or use site.

April 1, 2022

Nice'n Clean® Wipes  
Nice'n Clean® Disinfecting Wipes  
Nice'n Clean® Wipes Disinfecting  
Nice'n Clean® Wipes Disinfecting Wipes

Nice'n Clean® Lemon Scent Wipes  
Nice'n Clean® Wipes Lemon Scent  
Nice'n Clean® Disinfecting Wipes Lemon Scent  
Nice'n Clean® Wipes Disinfecting Lemon Scent  
Nice'n Clean® Wipes Disinfecting Wipes Lemon Scent

Nice'n Clean® Fresh Air Scent Wipes  
Nice'n Clean® Wipes Fresh Air Scent  
Nice'n Clean® Disinfecting Wipes Fresh Air Scent  
Nice'n Clean® Wipes Disinfecting Fresh Air Scent  
Nice'n Clean® Wipes Disinfecting Wipes Fresh Air Scent

Nice'n Clean® Lemon Scent Scrubbing Wipes  
Nice'n Clean® Wipes Lemon Scent Scrubbing  
Nice'n Clean® Disinfecting Wipes Lemon Scent  
Scrubbing  
Nice'n Clean® Wipes Disinfecting Lemon Scent  
Scrubbing  
Nice'n Clean® Wipes Disinfecting Wipes Lemon Scent  
Scrubbing

*[Note: the following variants have a space after the word "Nice"]*

Nice 'n Clean® Wipes  
Nice 'n Clean® Disinfecting Wipes  
Nice 'n Clean® Wipes Disinfecting  
Nice 'n Clean® Wipes Disinfecting Wipes

Nice 'n Clean® Lemon Scent Wipes  
Nice 'n Clean® Wipes Lemon Scent  
Nice 'n Clean® Disinfecting Wipes Lemon Scent  
Nice 'n Clean® Wipes Disinfecting Lemon Scent  
Nice 'n Clean® Wipes Disinfecting Wipes Lemon Scent

Nice 'n Clean® Fresh Air Scent Wipes  
Nice 'n Clean® Wipes Fresh Air Scent  
Nice 'n Clean® Disinfecting Wipes Fresh Air Scent  
Nice 'n Clean® Wipes Disinfecting Fresh Air Scent  
Nice 'n Clean® Wipes Disinfecting Wipes Fresh Air Scent

Nice 'n Clean® Lemon Scent Scrubbing Wipes  
Nice 'n Clean® Wipes Lemon Scent Scrubbing  
Nice 'n Clean® Disinfecting Wipes Lemon Scent  
Scrubbing

Nice 'n Clean® Wipes Disinfecting Lemon Scent  
Scrubbing  
Nice 'n Clean® Wipes Disinfecting Wipes Lemon Scent  
Scrubbing

The Original Wet-Nap® Wipes Disinfecting  
The Original Wet-Nap® Wipes Disinfecting Wipes

The Original Wet-Nap® Lemon Scent Wipes  
The Original Wet-Nap® Wipes Lemon Scent  
The Original Wet-Nap® Disinfecting Wipes Lemon Scent  
The Original Wet-Nap® Wipes Disinfecting Lemon Scent  
The Original Wet-Nap® Wipes Disinfecting Wipes Lemon  
Scent

The Original Wet-Nap® Fresh Air Scent Wipes  
The Original Wet-Nap® Wipes Fresh Air Scent  
The Original Wet-Nap® Disinfecting Wipes Fresh Air Scent  
The Original Wet-Nap® Wipes Disinfecting Fresh Air Scent  
The Original Wet-Nap® Wipes Disinfecting Wipes Fresh Air  
Scent

The Original Wet-Nap® Lemon Scent Scrubbing Wipes  
The Original Wet-Nap® Wipes Lemon Scent Scrubbing  
The Original Wet-Nap® Disinfecting Wipes Lemon Scent  
Scrubbing  
The Original Wet-Nap® Wipes Disinfecting Lemon Scent  
Scrubbing  
The Original Wet-Nap® Wipes Disinfecting Wipes Lemon  
Scent Scrubbing

Wet-Nap® Wipes  
Wet-Nap® Disinfecting Wipes  
Wet-Nap® Wipes Disinfecting  
Wet-Nap® Wipes Disinfecting Wipes

Wet-Nap® Lemon Scent Wipes  
Wet-Nap® Wipes Lemon Scent  
Wet-Nap® Disinfecting Wipes Lemon Scent  
Wet-Nap® Wipes Disinfecting Lemon Scent  
Wet-Nap® Wipes Disinfecting Wipes Lemon Scent

Wet-Nap® Fresh Air Scent Wipes  
Wet-Nap® Wipes Fresh Air Scent  
Wet-Nap® Disinfecting Wipes Fresh Air Scent  
Wet-Nap® Wipes Disinfecting Fresh Air Scent  
Wet-Nap® Wipes Disinfecting Wipes Fresh Air Scent

Wet-Nap® Lemon Scent Scrubbing Wipes  
Wet-Nap® Wipes Lemon Scent Scrubbing  
Wet-Nap® Disinfecting Wipes Lemon Scent Scrubbing  
Wet-Nap® Wipes Disinfecting Lemon Scent Scrubbing  
Wet-Nap® Wipes Disinfecting Wipes Lemon Scent Scrubbing

**THE INFORMATION IN THIS BOX IS NOT PART OF THE LABELING**

Statements in brackets [ ] are optional or instructional. Statements in italics are instructional. The terms "wipe(s)", "towel(s)", "towelette(s)" and "cloth(s)" can be used interchangeably throughout except for the product primary brand name which can be only changed by notification or amendment. The word "and" and symbol "&" can be used interchangeably. Capitalization may be used interchangeably. Plurals or singular, bold and italics are all variable unless specified in 40 CFR. Graphics, symbols, and logos may vary in color. Pictures of use sites/surfaces and dispensing directions, are simply descriptive and may be interchanged for other similar images. All use surfaces and/or use sites on the label may be used in conjunction with an image of the use surface and/or use site.

April 1, 2022

**ACTIVE INGREDIENTS**

n-Alkyl (68% C<sub>12</sub>, 32% C<sub>14</sub>) dimethyl ethylbenzyl ammonium chlorides ..... 0.14%  
n-Alkyl (60% C<sub>14</sub>, 30% C<sub>16</sub>, 5% C<sub>12</sub>, 5% C<sub>18</sub>) dimethyl benzyl ammonium chlorides ..... 0.14%

**OTHER INGREDIENTS** ..... **99.72%**

**TOTAL** ..... **100.00%**

[Does not include the weight of the [cloth] [towelette] [or] [wipe]]

**KEEP OUT OF REACH OF CHILDREN [AND PETS]  
CAUTION**

See [back] [outer] [carton] [side] [container[s]] [inside] [panel] for additional precautionary statements

[Contains:] [or NET CONTENTS] [and/or [Net Wt.] [Minimum Wt.]] \_\_\_\_\_ oz. (g) [or lbs. (kg)]  
\_\_\_\_[# OF CLOTHS] [PREMOISTENED][Wet] WIPES [SIZE of each cloth]

EPA Reg. No.: 9480-5

EPA Est. No.: 9480-NY-1

[or EPA Est. No. A=9480-NY-1, B=72956-WI-1, C=72956-AR-1 [Others may be added]

Alpha character will precede batch code on product] [OR Beginning of batch code indicates Est. No.]

[Manufactured by [or for]:]

Professional Disposables International, Inc.

400 Chestnut Ridge Road, Woodcliff Lake, NJ 07677 [USA]

[For information call: [phone number to be inserted]]

[Made in] [USA][of][with] domestic and [foreign] [imported] materials] [*insert country*]

**THE INFORMATION IN THIS BOX IS NOT PART OF THE LABELING**

Statements in brackets [ ] are optional or instructional. Statements in italics are instructional. The terms "wipe(s)", "towel(s)", "towelette(s)" and "cloth(s)" can be used interchangeably throughout except for the product primary brand name which can be only changed by notification or amendment. The word "and" and symbol "&" can be used interchangeably. Capitalization may be used interchangeably. Plurals or singular, bold and italics are all variable unless specified in 40 CFR. Graphics, symbols, and logos may vary in color. Pictures of use sites/surfaces and dispensing directions, are simply descriptive and may be interchanged for other similar images. All use surfaces and/or use sites on the label may be used in conjunction with an image of the use surface and/or use site.

April 1, 2022

**PRECAUTIONARY STATEMENTS:**

**Hazards to humans and domestic animals**

**CAUTION:** Causes moderate eye irritation. Avoid contact with eyes and clothing. Wash hands thoroughly with soap and water after handling and before eating, drinking, chewing gum, using tobacco, or using [the] toilet.

**FIRST AID:**

**If in eye[s]:** Hold eye[s] open, rinse slowly and gently with water for 15-20 minutes. Remove contact lenses, if present, after the first 5 minutes, then continue rinsing eye. Call a poison control center or healthcare professional [*or doctor*] for treatment advice.  
[For additional information or in case of emergency, call toll-free [*phone number to be inserted*]].  
Have the product container or label with you when calling a poison control center or healthcare professional [*or doctor*], or going for treatment.

**DIRECTIONS FOR USE:**

It is a violation of Federal law to use this product in a manner inconsistent with its labeling.  
[See directions for use on the container[s] inside] [Consult [equipment] manufacturer's instructions prior to use.] [[For surfaces,] Test wipe on small inconspicuous area before use.]

***Dispensing Directions***

[Use one of the following as applicable to type of container:]

**CANISTER:**

[**To Dispense** TOWELETTES] [*or* WIPES] [*or* TOWELS] [*or* CLOTHS]:

Remove lid [.] [and discard inner seal] [from container *or* canister.] Find center of wipe roll, remove first wipe for use, twist corner of next wipe into a point and thread through the hole in the [container *or*] canister lid. Pull through about one inch. Replace lid. Dispense remaining wipes as necessary by pulling out at an angle. When not in use, keep [center cap of] lid closed to prevent moisture loss.

OR

***CANISTER with peel back labels:***

Peel [back] for additional labeling.  
Peel [back] label for additional information.

OR

**TRAVEL PACK:**

Peel back label slowly. Pull out wipes as needed and reseal label. Unfold wipe.

OR

**PACKET/PACKAGE:**

Tear open packet [package]. Unfold wipe.

OR

**THE INFORMATION IN THIS BOX IS NOT PART OF THE LABELING**

Statements in brackets [ ] are optional or instructional. Statements in italics are instructional. The terms "wipe(s)", "towel(s)", "towelette(s)" and "cloth(s)" can be used interchangeably throughout except for the product primary brand name which can be only changed by notification or amendment. The word "and" and symbol "&" can be used interchangeably. Capitalization may be used interchangeably. Plurals or singular, bold and italics are all variable unless specified in 40 CFR. Graphics, symbols, and logos may vary in color. Pictures of use sites/surfaces and dispensing directions, are simply descriptive and may be interchanged for other similar images. All use surfaces and/or use sites on the label may be used in conjunction with an image of the use surface and/or use site.

April 1, 2022

**Softpack/Flowpack/Ecopak/Portable pack:**

**To Dispense [or To use] [SOLO® PAK] [or soft pack] [or Eco PAK] [or Eco Pack]] [or product]:**

Open package lid. [Use pull tab to] [Completely remove inner seal.] Pull out wipe [at an angle] [towards you through orifice or opening]. [The next wipe pops up automatically.] Snap lid closed after use to retain moisture.

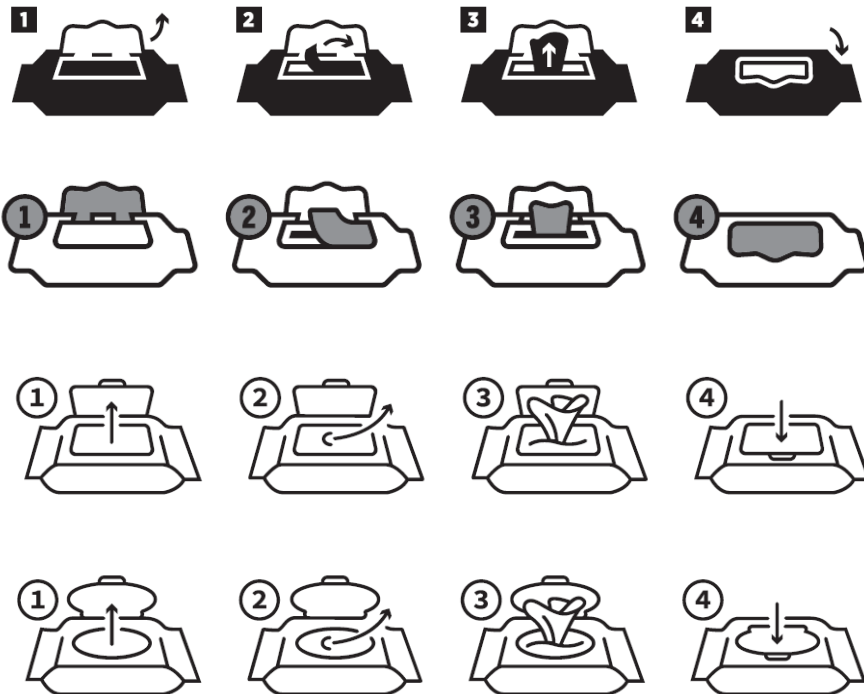
OR

**To Dispense [or To use] [SOLO® PAK] [or soft pack] [or Eco PAK] [or Eco Pack]] [or product]:** Open package lid. [Use pull tab to] Completely remove inner seal. Apply pressure around opening and pull wipe out [at an angle]. Snap lid closed after use to retain moisture.

OR

**To Dispense:**

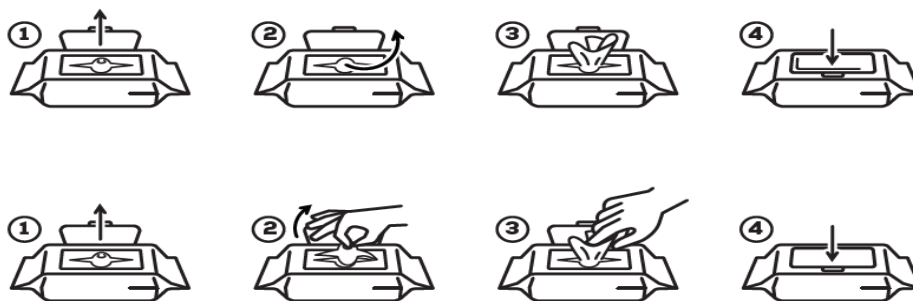
- Open package lid.
- [Use pull tab to] Completely remove inner seal.
- [Apply pressure around opening and] pull wipe out [at an angle].
- Snap lid closed after use to retain moisture.



**THE INFORMATION IN THIS BOX IS NOT PART OF THE LABELING**

Statements in brackets [ ] are optional or instructional. Statements in italics are instructional. The terms “wipe(s)”, “towel(s)”, “towelette(s)” and “cloth(s)” can be used interchangeably throughout except for the product primary brand name which can be only changed by notification or amendment. The word “and” and symbol “&” can be used interchangeably. Capitalization may be used interchangeably. Plurals or singular, bold and italics are all variable unless specified in 40 CFR. Graphics, symbols, and logos may vary in color. Pictures of use sites/surfaces and dispensing directions, are simply descriptive and may be interchanged for other similar images. All use surfaces and/or use sites on the label may be used in conjunction with an image of the use surface and/or use site.

April 1, 2022



DO NOT FLUSH • STORE AT ROOM TEMPERATURE  
 DISPOSE OF USED WIPES IN TRASH RECEPTACLE • KEEP SOLO® LID CLOSED WHEN NOT IN USE  
 SOLO® is a registered trademark of Nice-Pak Products, Inc.

OR

**REFILL PACKET [or PACKAGE] [or POUCH]:**

This refill package is made for use only in a [product name] container; do not use this product in a container for another product. Do not use the refill wipes in a container that is cracked or broken. Discard the cracked or broken container in accordance with the container disposal instructions on the label.

*[Option 1]*

Remove [entire] lid from container. Tear open refill [package] at [notch] [mark] [arrow] and place [wipe] roll in empty container. Follow information on container to dispense wipes.

*[Option 2]*

Remove [entire] lid from container. Tear open refill [package] at [notch] [mark] [arrow]. Place [entire] refill package of wipes in empty container. Follow information on container to dispense wipes.

OR

**GENERIC:**

Open lid. Pull out wipe. Close lid tightly.

OR

Bucket [or pail or container] [numbers optional]

Remove the lid from the [pail or bucket or container.]

Press open the dispenser at center of the lid.

[Open the refill pack.]

Locate the first wipe at the center of the roll.

Feed the first wipe through the dispensing orifice.

Reapply the lid to the [pail or bucket or container.]

Dispense the wipe.

**THE INFORMATION IN THIS BOX IS NOT PART OF THE LABELING**

Statements in brackets [ ] are optional or instructional. Statements in italics are instructional. The terms “wipe(s)”, “towel(s)”, “towelette(s)” and “cloth(s)” can be used interchangeably throughout except for the product primary brand name which can be only changed by notification or amendment. The word “and” and symbol “&” can be used interchangeably. Capitalization may be used interchangeably. Plurals or singular, bold and italics are all variable unless specified in 40 CFR. Graphics, symbols, and logos may vary in color. Pictures of use sites/surfaces and dispensing directions, are simply descriptive and may be interchanged for other similar images. All use surfaces and/or use sites on the label may be used in conjunction with an image of the use surface and/or use site.

April 1, 2022

- For the refills:
1. Remove the lid from the [pail or bucket or container.]
  2. Remove the empty refill pack material from the [pail or bucket or container.]
  3. Press open the dispenser at center of the lid.
  4. Open the refill pack.
  5. Locate the first wipe at the center of the roll.
  6. Feed the first wipe through the dispensing orifice.
  7. Reapply the lid to the pail.
  8. Dispense the wipe.

OR

#### **FOR DISPENSING FLOOR WIPES:**

*[Option 1 – Tub]*

*(With pictures depicting use)*

1. Unfold the cloth
2. [Place the cloth so textured side touches the floor.] Line up long side of cloth with long side of sweeper
3. Wrap cloth around sweeper head so it is completely covered and push cloth into grippers

or

*[Option 2 – Re-sealable pouch dispensing]*

Open by pulling back on re-sealable label. Remove wet wipe, unfold and attach to sweeper. Reseal label on pouch to retain moisture.

or

*[Option 3 – Pouch with lid dispensing]*

Open container by pulling up on lid. [Remove and discard inner label.] Remove wet wipe, unfold and attach to sweeper. Close lid on package to retain moisture.

*[Use one or more of the following as appropriate; may be used in any order as long as entire paragraph is used]*

#### **CLEANING DIRECTIONS**

##### **[TO CLEAN] [CLEANING] [AND] [DEODORIZING] HARD, NONPOROUS, NONFOOD CONTACT SURFACES:**

Wipe surface [with towelette] until clean. Let air dry.

#### **CLEANING DIRECTIONS FOR FLOORS**

##### **Directions for cleaning floors:**

- [1] Unfold cloth.
- [2] Place cloth on floor
- [3] Wrap cloth around sweeper head and push cloth into grippers
- [4] Clean the floor. Dispose of dirty cloths in the trash. Do not flush.

#### **SANITIZATION DIRECTIONS**

**TO SANITIZE [AND DEODORIZE] HARD, NONPOROUS, NONFOOD CONTACT SURFACES:** Use a wipe to remove visible filth [or visible soil]. Unfold a clean wipe and thoroughly wet surface. Treated surface must remain visibly wet for [a full] fifteen (15) seconds. Use additional wipe(s) if needed to assure continuous 15-second wet contact time. Let air dry. *[If label includes cleaning claims for grease, soap scum, grime, dirt, messes, soil, add the following as the first sentence (before "Use a wipe to remove..."):* A pre-cleaning step is required for [grease], [soap scum], [grime], [dirt], [messes] [soil].]

#### **THE INFORMATION IN THIS BOX IS NOT PART OF THE LABELING**

Statements in brackets [ ] are optional or instructional. Statements in italics are instructional. The terms "wipe(s)", "towel(s)", "towelette(s)" and "cloth(s)" can be used interchangeably throughout except for the product primary brand name which can be only changed by notification or amendment. The word "and" and symbol "&" can be used interchangeably. Capitalization may be used interchangeably. Plurals or singular, bold and italics are all variable unless specified in 40 CFR. Graphics, symbols, and logos may vary in color. Pictures of use sites/surfaces and dispensing directions, are simply descriptive and may be interchanged for other similar images. All use surfaces and/or use sites on the label may be used in conjunction with an image of the use surface and/or use site.

April 1, 2022



## **SANITIZATION DIRECTIONS FOR FLOORS**

**TO SANITIZE HARD, NONPOROUS FLOORS:** If floor is visibly soiled, sweep, vacuum, mop or wipe to preclean floor before sanitizing.

To Sanitize: Thoroughly wet floor ensuring that surface remains visibly wet for 15 seconds. Change wipe if it becomes visibly soiled. Use enough wipes for floor to remain visibly wet for 15 seconds. For a larger area, use more than one wipe. Allow to air dry. Do not allow anyone to walk on floor surface until completely dry. One [ \_ x \_ inch ( \_\_ cm x \_\_ cm)] wipe will cover approximately [ \_\_sq. ft. ( \_\_sq. meters)] [*Note: coverage area listed on label will change proportionately with wipe surface area*]. To be effective, floor must remain wet for full contact time.

## **DISINFECTION DIRECTIONS**

**TO DISINFECT [AND DEODORIZE] HARD, NONPOROUS SURFACES:** Use a wipe to remove visible filth [*or visible soil*]. Unfold a clean wipe and thoroughly wet surface. Treated surface must remain visibly wet for [a full] three (3) minutes. Use additional wipe(s) if needed to assure continuous 3-minute wet contact time. A thorough rinse with potable water is required for surfaces in direct contact with food. [*If label includes cleaning claims for grease, soap scum, grime, dirt, messes, soil, add the following as the first sentence (before “Use a wipe to remove...”): A pre-cleaning step is required for [grease], [soap scum], [grime], [dirt], [messes] [soil].*]

[Feline Calicivirus (Surrogate for Human Norovirus) and Rhinovirus Type 1A: Treated surface must remain visibly wet for five (5) minutes.] (*Note: This direction must be used when Feline Calicivirus and Rhinovirus Type 1A is on container label*)

## **DISINFECTION DIRECTIONS FOR FLOORS**

**TO DISINFECT HARD, NONPOROUS FLOORS:** If floor is visibly soiled, sweep, vacuum, mop or wipe to preclean floor before disinfecting.

To disinfect: Thoroughly wet floor ensuring that surface remains visibly wet for 3 minutes. [Feline Calicivirus (Surrogate for Human Norovirus) and Rhinovirus Type 1A: Treated surface must remain visibly wet for five (5) minutes.] (*Note: This direction must be used when Feline Calicivirus and Rhinovirus Type 1A is on container label*)

Change wipe if it becomes visibly soiled. Use enough wipes for floor to remain visibly wet for 3 minutes. For a larger area, use more than one wipe. Allow to air dry. Do not allow anyone to walk on floor surface until completely dry. One [ \_ x \_ inch ( \_\_ cm x \_\_ cm)] wipe will cover approximately [ \_\_sq. ft. ( \_\_sq. meters)] [*Note: coverage area listed on label will change proportionately with wipe surface area*]. To be effective, floor must remain wet for full contact time.

[*The following headings are optional; choose as appropriate:*]

[Hospital Use] [Nursing Homes] [Doctors' Offices] [Hospices] [Healthcare Settings]

**ULTRASOUND TRANSDUCERS:** For use on external surfaces of Ultrasound Transducers only

To disinfect: Pre-clean ultrasound gel from external transducer to be disinfected by using a clean wash cloth. Then thoroughly wet the probe with a towelette. Treated surface must remain visibly wet for [a full] three (3) minutes. Use additional wipe[s] if needed to assure continuous 3-minute wet contact time. Let air dry.

[Feline Calicivirus (Surrogate for Human Norovirus) and Rhinovirus Type 1A: Treated surface must remain visibly wet for five (5) minutes.] (*Note: This direction must be used when Feline Calicivirus and Rhinovirus Type 1A is on container label*)

### **THE INFORMATION IN THIS BOX IS NOT PART OF THE LABELING**

Statements in brackets [ ] are optional or instructional. Statements in italics are instructional. The terms “wipe(s)”, “towel(s)”, “towelette(s)” and “cloth(s)” can be used interchangeably throughout except for the product primary brand name which can be only changed by notification or amendment. The word “and” and symbol “&” can be used interchangeably. Capitalization may be used interchangeably. Plurals or singular, bold and italics are all variable unless specified in 40 CFR. Graphics, symbols, and logos may vary in color. Pictures of use sites/surfaces and dispensing directions, are simply descriptive and may be interchanged for other similar images. All use surfaces and/or use sites on the label may be used in conjunction with an image of the use surface and/or use site.

April 1, 2022

*[The following instructions are to be included on production labels when claims against HIV, and/or HBV and/or HCV are listed; one, two or all three of the viruses may be included on claims and directions in production labels.]*

**†KILLS HIV-1 (AIDS VIRUS), HEPATITIS B VIRUS (HBV) AND HEPATITIS C VIRUS (HCV) ON PRE-CLEANED ENVIRONMENTAL SURFACES/OBJECTS [AND PRE-CLEANED EXTERNAL SURFACES OF ULTRASOUND TRANSDUCERS [PROBES]] PREVIOUSLY SOILED WITH BLOOD/BODY FLUIDS** in three (3) minutes at room temperature (68°- 77°F) *or* (20°- 25°C) in healthcare or other settings in which there is an expected likelihood of soiling of inanimate surfaces/objects with blood or body fluids, and in which the surfaces/objects likely to be soiled with blood or body fluids can be associated with the potential for transmission of Human Immunodeficiency Virus Type 1 (HIV-1) (associated with AIDS), Hepatitis B Virus (HBV) and Hepatitis C Virus (HCV).

**†SPECIAL INSTRUCTIONS FOR CLEANING AND DECONTAMINATION AGAINST HIV-1, HEPATITIS B VIRUS AND HEPATITIS C VIRUS ON HARD, NONPOROUS INANIMATE SURFACES/OBJECTS SOILED WITH BLOOD/BODY FLUIDS**

**Personal protection:** When using this product, wear disposable protective gloves, protective gowns, face masks, and eye coverings [per facility protocol] when handling blood or body fluids.

**Cleaning procedure:** All blood and other body fluids must be thoroughly cleaned from surfaces and objects before disinfection by the germicidal cloth. Open and unfold first germicidal cloth to remove visible filth [or visible soil].

**Disposal of infectious materials:** Dispose of used towelette in accordance with local regulations for infectious waste disposal.

**Contact time:** Use second germicidal cloth to thoroughly wet surface. Allow surface to remain visibly wet three (3) minutes, let air dry. Although efficacy at a 30-second contact time has been shown to be adequate against HIV-1 (AIDS VIRUS), this time is not sufficient for the other non-HIV organisms listed on this label. Therefore, a 3-minute wet contact time must be used for all listed non-HIV organisms.

*[Use storage/disposal statement A if canister, tub, bucket, pail or refill dispenser directions used. Use storage/disposal statement B if travel pack, Solo® Pak, soft pack, pouch, or [refill or [bulk]] packet/package] directions used.]*

## **STORAGE AND DISPOSAL:**

Do not contaminate water, food, or feed by storage and disposal. *[Statement not required for residential or household use products.]*

*[Statement A:]*

**Storage:** Do not store near heat or open flame. When not in use keep [center cap of] lid closed to prevent moisture loss. **Towelette Disposal:** Do not reuse towelette. [Dispose of] [or Discard] used towelette in trash. Do not flush in toilet. **Dispenser [or Container] [or Package] Disposal:** Nonrefillable container. Do not reuse or refill this container. Offer for recycling. If recycling is not available, put in trash collection.

*[If refillable dispenser is being used, substitute the following:* **Refill Dispenser [or Container] [or Package]**

**Disposal:** Offer for recycling. If recycling is not available, discard in trash.]

*[Statement B:]*

**Storage:** Do not store near heat or open flame. **Towelette Disposal:** Do not reuse towelette. Dispose of used towelette in trash. Do not flush in toilet. **Dispenser [Packet or Container] [or Package] Disposal:** Put empty [travel pack] [or Solo® Pak or [refill] packet [or packaging] [ or container]] in trash collection.

### **THE INFORMATION IN THIS BOX IS NOT PART OF THE LABELING**

Statements in brackets [ ] are optional or instructional. Statements in italics are instructional. The terms “wipe(s)”, “towel(s)”, “towelette(s)” and “cloth(s)” can be used interchangeably throughout except for the product primary brand name which can be only changed by notification or amendment. The word “and” and symbol “&” can be used interchangeably. Capitalization may be used interchangeably. Plurals or singular, bold and italics are all variable unless specified in 40 CFR. Graphics, symbols, and logos may vary in color. Pictures of use sites/surfaces and dispensing directions, are simply descriptive and may be interchanged for other similar images. All use surfaces and/or use sites on the label may be used in conjunction with an image of the use surface and/or use site.

April 1, 2022

**Use sites:**

Hospital and Healthcare Settings: Ambulances, Ambulatory Surgical Centers (ASC), Anesthesia, CAT Labs, CCU, Central Supply, Clinics, Dental Offices, Dialysis Clinics, Doctors' Offices, Donation Centers [blood] [plasma] [semen] [milk] [apheresis], Emergency Medical Settings, Emergency Rooms, E.R., Emergency Vehicles, Eye Surgical Centers, Healthcare Settings, Healthcare Facilities, Home Healthcare, Hospices, Hospitals, ICU, Isolation Areas, Laboratory, Laundry Rooms, Neonatal Intensive Care Units (NICU), Newborn nursery, Nursing Homes, Operating Rooms (OR), Ophthalmic Offices, Orthopedics, Out-Patient Surgical Centers (OPSC), Patient Care Areas, Pediatrics, Pediatric Intensive Care Units (PICU), Physical Therapy, Physician["s"] office[s], Radiology, Recovery Rooms, Rehabilitation, Respiratory Therapy, Surgery, Surgical Centers, Transport Vehicles, and X-Ray.

and/or

**Critical Care Areas:** CCU, Emergency Rooms, E.R., ICU, Neonatal Intensive Care Units (NICU), Operating Rooms, Pediatric Intensive Care Units (PICU) and Surgery.

and/or

Hospital, Healthcare, and Critical Care Use Sites: May be used on hard, nonporous surfaces of: ambulance equipment surfaces; bed railings; blood glucose meters; cabinets; carts; chairs; counters; dental chairs; dental countertops; dental unit instrument trays; endodontic equipment such as apex locators; exam tables; gurneys; infant incubators [interior and exterior surfaces of]; infant warmers [interior and exterior surfaces of]; isolettes; IV poles; laboratory equipment and surfaces; loupes; operating room tables and lights; operatory light switches; oxygen hoods; physical therapy (PT) equipment surfaces; slit lamps; spine back boards; stethoscopes; stretchers; stools; tables; telephones; toilet seats; and hard, nonporous outside surfaces of: amalgamators and dental curing lights; anesthesia machines and respiratory therapy equipment; apheresis machines, diagnostic equipment, dialysis machines; patient monitoring equipment, patient support and delivery equipment, pulp testers and motors; toilets; and ultrasound transducers and probes.

*[The following paragraph must be used if hospital and healthcare use sites are on the label.]*

This product is not to be used as a terminal sterilant/high level disinfectant on any surface or instrument that (1) is introduced directly into the human body, either into or in contact with the bloodstream or normally sterile areas of the body, or (2) contacts intact mucous membranes but which does not ordinarily penetrate the blood barrier or otherwise enter normally sterile areas of the body. This product may be used to pre-clean or decontaminate critical or semi-critical medical devices prior to sterilization or high level disinfection.

**Use sites continued:** *[choose from the following areas of use as appropriate; they may be listed in any order; at least one use site (including corresponding list of surfaces) must be used on the label; "Kitchen" areas of use must be included if "food contact surfaces" directions (see "Directions" page) are used.]*

**[For use on hard, nonporous nonfood contact surfaces in public areas:]**

Airplanes	funeral homes	ophthalmic offices
airports	garage	patient rooms
animal [care facilities] holding areas [hospitals] [life science laboratories] [transportation vehicles]	gas stations	patio
assisted living and long term care facilities	general use	pharmacies
athletic facilities	grocery stores***	phone booths
automobile[s] [interiors]	grooming establishments	physical therapy
banquet halls	gym[nasium][s]	physician offices
barbershops	healthcare settings	play areas
bars***	health clubs	playrooms***
basements	Health Club Use:	playgrounds
beauty salons	Treadmill handles, elliptical handles, exercise bikes, gym equipment	prisons
boats	home [centers] [healthcare]	[police and/or fire] vehicles
bowling alleys	hospices	public [facilities] [places]
buses	hospitality	[restrooms] [telephone[s]] [booths]] [transportation areas]
	hotels	recreational centers
		rehabilitation

**THE INFORMATION IN THIS BOX IS NOT PART OF THE LABELING**

Statements in brackets [ ] are optional or instructional. Statements in italics are instructional. The terms "wipe(s)", "towel(s)", "towelette(s)" and "cloth(s)" can be used interchangeably throughout except for the product primary brand name which can be only changed by notification or amendment. The word "and" and symbol "&" can be used interchangeably. Capitalization may be used interchangeably. Plurals or singular, bold and italics are all variable unless specified in 40 CFR. Graphics, symbols, and logos may vary in color. Pictures of use sites/surfaces and dispensing directions, are simply descriptive and may be interchanged for other similar images. All use surfaces and/or use sites on the label may be used in conjunction with an image of the use surface and/or use site.

April 1, 2022

business & office buildings	Hotel Use: Remote controls, telephones	rental cars
butcher shops***	household	rest stops
cafeterias***	indoors	restrooms
campgrounds	industrial [establishments]	restaurants***
campers	industry	retail [establishments]
car[s] interiors [exteriors]	[institutional] laundromat	RV
casinos	[institutional] facilities	salons
catering facilities***	[institutional] kitchens***	school[s] [buses]
central supply	Institutions	shelters
children's rooms	kennels	ships
churches	laborator[y or ies]	shopping centers
classrooms	laundry rooms	shower & bath areas
clinics	lavatories	sick rooms
colleges	lawn chairs [furniture] [vinyl or plastic]	spas
commercial [establishments]	libraries	storage areas
convenience stores	living [areas] [rooms]	subways
correctional facilities	locker room[s] [facilities]	supermarkets***
cruise ships	lounges	tack shops
[damp] storage areas	malls	taxis
day care centers	[manufacturing] plants***	toilet areas
delicatessens***	markets	trailers
den	meat & poultry plants (inedible areas)***	trains
dental offices	military institutions	transportation terminals
doctor offices	mobile homes	transport vehicles
dorms	mortuaries	trolleys
dressing rooms	motels	USDA inspected food processing facilities***
drug stores	motor homes	vacation homes
elevator[s] [buttons]	nursery	veterinary offices
exercise facilities	nursing homes	warehouse clubs
factories	office[s]	wellness centers
family [rooms] [areas]	office buildings	
fast food restaurants***	Office Use: keyboard, telephone, office equipment	
fitness centers		
food processing plants***		
food storage areas***		

[The following is required if kitchen uses are included: \*\*\*A thorough rinse with potable water after use is required for surfaces in direct contact with food. Food contact surfaces are not cleared for sanitization.]

**Hard, nonporous Use surfaces:**

**[For use on hard, nonporous nonfood contact surfaces in public areas:]**

Appliances [exterior surfaces of [or outside of]	exhaust fan [hood]	mirrors
appliance knobs	exterior [outside]surfaces of microwaves***	nonfood contact surfaces of non- wood highchairs
around the toilet	face shields	non-wooden outside patio furniture[vinyl or plastic]
ATM machines	faucets	non-polycarbonate plastic surfaces office furniture
barbells	fax machines	office machinery
basin[s]	filing cabinets	outside surfaces of blenders***
bathrooms	filing doors	outside surfaces of coffee makers***
bathroom[s] fixtures [or surfaces]	filing handles	patio furniture/lawn chairs [furniture]
bedside furniture	finished floors [and/or sealed hardwood]	Personal Digital Assistants (PDA's)
breath apparatus [full face]	fixtures	personal protective safety equipment
cabinet[s] knobs	floors [sealed]	
car interiors [exteriors]	floors around toilets	
carts		
cash registers		

**THE INFORMATION IN THIS BOX IS NOT PART OF THE LABELING**

Statements in brackets [ ] are optional or instructional. Statements in italics are instructional. The terms "wipe(s)", "towel(s)", "towelette(s)" and "cloth(s)" can be used interchangeably throughout except for the product primary brand name which can be only changed by notification or amendment. The word "and" and symbol "&" can be used interchangeably. Capitalization may be used interchangeably. Plurals or singular, bold and italics are all variable unless specified in 40 CFR. Graphics, symbols, and logos may vary in color. Pictures of use sites/surfaces and dispensing directions, are simply descriptive and may be interchanged for other similar images. All use surfaces and/or use sites on the label may be used in conjunction with an image of the use surface and/or use site.

April 1, 2022

cell phones [mobile]  
 chairs  
 changing tables  
 children's furniture  
 chrome  
 chrome, exterior surfaces  
   of urinals *and/or* toilets  
 closets  
 clothes hampers  
 commode seats  
 computer[s] [monitors] [mouse]  
 cooler exteriors  
 counter[s]  
 counter tops  
 cribs  
 cupboards  
 cuspidors  
 desk/office  
 desktop  
 diaper pails  
 diaper changing tables /  
   areas / counters  
 dictating equipment surfaces  
 dining room surfaces *and/or*  
   tables\*\*\*  
 door[s] [door handles] [doorknobs]  
 door frames  
 drain boards  
 drawer pulls  
 dressing carts  
 dryers  
 electric can openers [outside  
   surfaces of]  
 exam tables  
 exercise machines [equipment]

garbage cans [disposals]  
 garbage storage areas  
 gas masks  
 glazed ceramic tile  
 glazed enamel tile  
 glazed porcelain  
 glazed tile[s]  
 glazed tiled walls  
 goggles  
 grocery carts  
 grocery cart handles  
 grocery cart child seats  
 gym[nastic] equipment  
 hampers  
 handles [toilet][toilet flush]  
   [door] [doorknob]  
   [faucet]  
   [refrigerator][telephone]  
   [cabinet][dishwasher]  
   [appliances]  
 handrails  
 hard hats  
 headsets [head phones]  
 keyboards  
 kitchen counters [*or* surfaces]  
 laminate flooring (such as  
   Pergo)  
 lamps  
 lawn chairs [furniture] [vinyl *or* plastic]  
 light switches  
 linoleum  
 lockers  
 [medicinal] [*or* medicine]  
   cabinets  
 metal surfaces  
 metal work benches

picnic tables  
 plastic shower curtains  
 plastic laundry basket  
   [hamper]  
 playground equipment  
 playpens  
 protective headgear  
 public [*or* pay] telephones  
 railings  
 recycling bins  
 refrigerated storage &  
   display equipment €  
 refrigerators€ [exterior  
   surfaces of [*or*  
   outside surfaces of]]  
 scales  
 seats  
 shopping cart child seats  
 shopping cart handles  
 shopping carts  
 shower[s] [area] [curtains]  
   [doors] [stalls] [walls]  
 signs  
 silicone rubber [*or* PVC]  
   hearing product  
 sinks  
 spectacles  
 sports equipment  
   stainless steel [non-  
   medical *or*  
   fixture]  
 staplers  
 stereo[s] [consoles]  
 storage areas  
 stoves€ [exterior surfaces of [*or*  
   outside surfaces of]]  
 table tops  
 tables  
 tables [fast food  
   restaurant]\*\*\*

**Hard, nonporous**

**Use surfaces (continued):**

telecommunications  
   equipment surfaces  
   [devices] [headsets]  
 telephone[s]  
 telephone equipment  
   surfaces  
 toasters€ [outside surfaces of]

**Surfaces made of:**

Acrylic  
 Finished woodwork  
 Formica  
 Glazed ceramic  
 Glazed enamel surfaces  
 Glazed porcelain  
 Metal

**[Soils] [Cleaning of]:**

Bacon fat\*\*\*  
 Baked on cheese\*\*\*  
 bathtub rings  
 Beverage stains\*\*\*  
 [Burnt on] food stains\*\*\*  
 [Burnt on] grease stains\*\*\*  
 Chicken juice\*\*\*  
 Coffee stains\*\*\*  
 Cooking splashes\*\*\*

***THE INFORMATION IN THIS BOX IS NOT PART OF THE LABELING***

Statements in brackets [ ] are optional or instructional. Statements in italics are instructional. The terms "wipe(s)", "towel(s)", "towelette(s)" and "cloth(s)" can be used interchangeably throughout except for the product primary brand name which can be only changed by notification or amendment. The word "and" and symbol "&" can be used interchangeably. Capitalization may be used interchangeably. Plurals or singular, bold and italics are all variable unless specified in 40 CFR. Graphics, symbols, and logos may vary in color. Pictures of use sites/surfaces and dispensing directions, are simply descriptive and may be interchanged for other similar images. All use surfaces and/or use sites on the label may be used in conjunction with an image of the use surface and/or use site.

April 1, 2022

toilets outside [exterior]  
surfaces of  
toilet handle [*and/or* tank] [*and/or*  
rim]  
toilet seats  
toy boxes  
toy[s] [plastic]  
training toilets  
training tools  
trash cans [compactors]  
trays  
treadmills  
tubs  
[TV][remote[s][controls]  
under counters [*and/or* sinks]  
urinals [exterior surfaces of]  
vanity tops  
vending machine surfaces  
vinyl covered ear muffs  
[vinyl] wallpaper  
walkers  
walls [washable]  
washer/dryers[exterior][outside]  
washing machines  
weight machines  
wheelchairs  
window blinds  
work benches [stations]  
workout equipment  
wrestling mats

Plastic [e.g., poly-  
Styrene or poly-  
Propylene]  
Sealed stone  
Stainless steel  
Upholstery-vinyl & plastic

Cosmetics  
Crumbs\*\*\*  
Dirt  
Dried on food\*\*\*  
Dust  
Fingerprints  
Food [residue][particles]\*\*\*  
Footprints  
grease♦  
grime  
hair gel  
hair spray  
hand [*or* body] lotion  
hard water stain  
limescale  
Lint  
mildew stain  
mud  
Oil\*\*\*  
outdoor grime  
Peanut butter\*\*\*  
[Pen] [*or*] [Pencil marks]  
pet areas [surfaces]  
pet [messes][stains]  
shaving cream  
smudges  
soap  
soap scum♦  
toothpaste  
tough soil

**THE INFORMATION IN THIS BOX IS NOT PART OF THE LABELING**

Statements in brackets [ ] are optional or instructional. Statements in italics are instructional. The terms “wipe(s)”, “towel(s)”, “towelette(s)” and “cloth(s)” can be used interchangeably throughout except for the product primary brand name which can be only changed by notification or amendment. The word “and” and symbol “&” can be used interchangeably. Capitalization may be used interchangeably. Plurals or singular, bold and italics are all variable unless specified in 40 CFR. Graphics, symbols, and logos may vary in color. Pictures of use sites/surfaces and dispensing directions, are simply descriptive and may be interchanged for other similar images. All use surfaces and/or use sites on the label may be used in conjunction with an image of the use surface and/or use site.

April 1, 2022

[Symbols including asterisks, bullets or footnotes and similar may be used to designate categories of organisms.]  
 [ATCC numbers are not required to be listed on production label. Organisms may be listed in a table and in any order.]

**Table 1 : List of Disinfection Organisms**

Contact Time	Microorganisms	Identification Number	
30 second[s]	<b>Bloodborne Pathogens</b> [ <i>Hospital/Medical Uses</i> ]		
	*HIV-1 [Strain HTLV-III <sub>B</sub> ] † [5% organic soil]		
3 Minute[s]	<b>Antibiotic Resistant Bacteria</b>		
	<i>Acinetobacter baumannii</i> , Multi-Drug Resistant	[ATCC 19606]	
	ESBL Production <i>Escherichia coli</i> ( <i>E.coli</i> )	[ATCC BAA-196]	
	Vancomycin Resistant <i>Enterococcus faecalis</i> (VRE)	[ATCC 51575]	
	Community Acquired Methicillin Resistant <i>Staphylococcus aureus</i> (CA-MRSA)	[NARSA NRS123] [Genotype USA 400]	
	Community Acquired Methicillin Resistant <i>Staphylococcus aureus</i> (CA-MRSA)	[NARSA NRS384] [Genotype USA 300]	
	Methicillin-Resistant <i>Staphylococcus aureus</i> (MRSA)	[ATCC 33592]	
	<b>Bacteria</b>		
	<i>Campylobacter jejuni</i>	[ATCC 29428]	
	<i>Escherichia coli</i> ( <i>E. coli</i> ) O157:H7	[ATCC 35150]	
	<i>Klebsiella pneumoniae</i>	[ATCC 4352]	
	<i>Listeria monocytogenes</i>	[ATCC 19111]	
	<i>Pseudomonas aeruginosa</i>	[ATCC 15442]	
	<i>Salmonella enterica</i> ( <i>Salmonella</i> )	[ATCC 10708]	
	<i>Staphylococcus aureus</i> ( <i>Staph</i> )	[ATCC 6538]	
	<i>Streptococcus pyogenes</i>	[ATCC 19615]	
	<b>Non-Enveloped Viruses*</b>		
	*Human Rotavirus [Strain WA]	[ATCC VR-2018]	
	<b>Enveloped Viruses*</b>		
	*Avian Influenza A Virus (H5N1), [Strain VNH5N1-PR8/CDC-RG]		
	*Herpes Simplex Virus, Type 2 [Strain G]	[ATCC VR-734]	
	*Human Coronavirus [Strain 229E]	[ATCC VR-740]	
	*Influenza A H3N2 Virus	[ATCC VR-544]	
	*Respiratory Syncytial Virus (RSV) ["Strain Long"]	[ATCC VR-26]	
	*Severe Acute Respiratory Syndrome-Related Coronavirus 2 (SARS-CoV-2) [(COVID-19 virus)] <sup>φ</sup> [[Strain] USA-WA1/2020]	[BEI Resources, NR-52281]	
	<b>Bloodborne Pathogens</b> [ <i>Hospital/Medical Uses</i> ]		
	*Hepatitis B Virus (HBV)[Duck Hepatitis B Virus Surrogate] † [100% Duck Serum organic load]		
	*Hepatitis C Virus (HCV) [Bovine Viral Diarrhea Virus Surrogate] † [5% organic soil]		
	<b>Fungi</b>		
	<i>Candida albicans</i>	[ATCC 10231]	
	5 minute[s]	<b>Non-Enveloped Viruses*</b>	
		*Rhinovirus type 1A [Strain 2060]	[ATCC VR-1559]
		* Feline Calicivirus (Surrogate for Human Norovirus) [Strain F-9]	[ATCC VR-782]

**THE INFORMATION IN THIS BOX IS NOT PART OF THE LABELING**

Statements in brackets [ ] are optional or instructional. Statements in italics are instructional. The terms "wipe(s)", "towel(s)", "towelette(s)" and "cloth(s)" can be used interchangeably throughout except for the product primary brand name which can be only changed by notification or amendment. The word "and" and symbol "&" can be used interchangeably. Capitalization may be used interchangeably. Plurals or singular, bold and italics are all variable unless specified in 40 CFR. Graphics, symbols, and logos may vary in color. Pictures of use sites/surfaces and dispensing directions, are simply descriptive and may be interchanged for other similar images. All use surfaces and/or use sites on the label may be used in conjunction with an image of the use surface and/or use site.

April 1, 2022

**Table 2: List of Non-food contact Sanitization Organisms**

Contact Time	Bacteria	Identification Number
15 second[s]	<i>Campylobacter jejuni</i>	[ATCC 29428]
	<i>Escherichia coli</i> ( <i>E. coli</i> ) O157:H7	[ATCC 35150]
	<i>Escherichia coli</i> ( <i>E. coli</i> )	[ATCC 11229]
	<i>Klebsiella pneumoniae</i>	[ATCC 4352]
	<i>Listeria monocytogenes</i>	[ATCC 19111]
	Community Acquired Methicillin Resistant <i>Staphylococcus aureus</i> (CA-MRSA)	[NARSA NRS123] [Genotype USA 400]
	Community Acquired Methicillin Resistant <i>Staphylococcus aureus</i> (CA-MRSA)	[NARSA NRS384] [Genotype USA 300]
	Methicillin-Resistant <i>Staphylococcus aureus</i> (MRSA)	[ATCC 33592]
	<i>Pseudomonas aeruginosa</i>	[ATCC 15442]
	<i>Salmonella enterica</i> ( <i>Salmonella</i> )	[ATCC 10708]
	<i>Staphylococcus aureus</i> ( <i>Staph</i> )	[ATCC 6538]
	<i>Streptococcus pyogenes</i>	[ATCC 19615]

**[MASTER LABEL READER'S NOTES**

*The label must list one or more specific organisms at least once. When organisms are listed next to a claim, the organisms may be listed in a footnote instead of directly next to the claim. [ATCC numbers are not required to be listed on production label.]*

**[Hospital sites and Hospital surfaces are listed under “Hospital & Healthcare Settings section”]**

*[If Avian Influenza A virus is listed on the production label ensure that only surfaces not conducive to immersion or excess liquid are listed on the label or list specific use sites for Avian Influenza A virus meeting criteria.]*

*“To Disinfect and Deodorize” directions must be used when label includes claims to kill odor causing organisms. “To Sanitize and Deodorize” directions must be used when label includes claims to kill “99.9%” odor causing organisms.*

*Sanitizing directions must be included on all labels with 99.9% claims; disinfection directions must be included on all labels with “germ” claims.]*

**THE INFORMATION IN THIS BOX IS NOT PART OF THE LABELING**

Statements in brackets [ ] are optional or instructional. Statements in italics are instructional. The terms “wipe(s)”, “towel(s)”, “towelette(s)” and “cloth(s)” can be used interchangeably throughout except for the product primary brand name which can be only changed by notification or amendment. The word “and” and symbol “&” can be used interchangeably. Capitalization may be used interchangeably. Plurals or singular, bold and italics are all variable unless specified in 40 CFR. Graphics, symbols, and logos may vary in color. Pictures of use sites/surfaces and dispensing directions, are simply descriptive and may be interchanged for other similar images. All use surfaces and/or use sites on the label may be used in conjunction with an image of the use surface and/or use site.

April 1, 2022



[Note: The following Emerging Viral Pathogen claims will not appear on product labels]

### **Emerging Viral Pathogen Claims**

This product qualifies for emerging viral pathogen claims per EPA's Guidance to Registrants: Process for Making Claims Against Emerging Viral Pathogens not on EPA-Registered Disinfectant Labels' when used in accordance with the appropriate use directions indicated below.

This product meets the criteria to make claims against certain emerging viral pathogens from the following viral categories [ies]

- Enveloped Viruses
- Large, Non-Enveloped Viruses
- Small, Non-Enveloped Viruses

<i>For an emerging viral pathogen that is a /an...</i>	<i>...follow the directions for use for the following organisms on the label:</i>
Enveloped virus	Feline Calicivirus (Surrogate for Human Norovirus), Strain: F9, ATCC VR-782  Rhinovirus Type 1A, Strain: 2060, ATCC VR-1559
Large, non-enveloped virus	Feline Calicivirus (Surrogate for Human Norovirus), Strain: F9, ATCC VR-782  Rhinovirus Type 1A, Strain: 2060, ATCC VR-1559
Small, non-enveloped virus	Feline Calicivirus (Surrogate for Human Norovirus), Strain: F9, ATCC VR-782  Rhinovirus Type 1A, Strain: 2060, ATCC VR-1559

**[Product name]** [has demonstrated effectiveness against viruses similar to **[name of emerging virus]** on hard nonporous surfaces. Therefore, **[product name]** can be used against **[name of emerging virus]** when used in accordance with the directions for use against **[name of supporting virus(es)]** on hard nonporous surfaces. Refer to the **[CDC or OIE website at [pathogen specific website address]]** for additional information.

**[Name of illness/outbreak]** is caused by **[name of emerging virus]**. **[Product Name]** kills similar viruses and therefore can be used against **[name of emerging virus]** when used in accordance with the directions for use against **[name of supporting virus(es)]** on hard, nonporous surfaces. Refer to the **[CDC or OIE] website at [website address]** for additional information.

[Reference: August 19, 2016 Guidance to Registrants: Process for Making Claims against Emerging Viral Pathogens Not on EPA-Registered Disinfectant Labels ("Guidance"):  
[https://www.epa.gov/sites/prodcution/files/201609/documents/emerging\\_viral\\_pathogen\\_program\\_guidance\\_final\\_8\\_19\\_16\\_001\\_0.pdf](https://www.epa.gov/sites/prodcution/files/201609/documents/emerging_viral_pathogen_program_guidance_final_8_19_16_001_0.pdf)]

### ***THE INFORMATION IN THIS BOX IS NOT PART OF THE LABELING***

Statements in brackets [ ] are optional or instructional. Statements in italics are instructional. The terms "wipe(s)", "towel(s)", "towelette(s)" and "cloth(s)" can be used interchangeably throughout except for the product primary brand name which can be only changed by notification or amendment. The word "and" and symbol "&" can be used interchangeably. Capitalization may be used interchangeably. Plurals or singular, bold and italics are all variable unless specified in 40 CFR. Graphics, symbols, and logos may vary in color. Pictures of use sites/surfaces and dispensing directions, are simply descriptive and may be interchanged for other similar images. All use surfaces and/or use sites on the label may be used in conjunction with an image of the use surface and/or use site.

April 1, 2022

**[Optional claims and descriptors, location optional;]**

[Footnotes or asterisks may be used with certain claims below; for more information, see Master Label Reader Notes on previous page.]

**Disinfecting Claims**

(Note: Feline Calicivirus and Rhinovirus Type 1A have a 5-minute contact time. HIV-1 has a 30-second contact time. All other organisms have a 3-minute contact time. Organisms and contact times are listed in Table 1 on page 14)

[number to be inserted] [wet] [cleaning] [and] [disinfecting<sup>2</sup>] cloths [Xin x Xin] [X x Xin] [X x X"]  
3 [steps] in 1-wipes, scrubs and disinfects [or sanitizes] [so you finish fast] ▲  
3 minutes is all it takes to kill 99.9% of bacteria  
[X%] larger wipe[s] [<sup>u</sup>] [versus] [our] [similar count bulky canisters] [than] [standard] [Xin x Xin] [X x Xin] [X x X"] [disinfecting  
wipe[s]] [to cover [larger][large][more] area[s]]  
99.9% Effective in Killing [or Against] Household Germs<sup>1</sup> [or bacteria \*\*] on hard, nonporous surfaces  
99.9% Effective against [SARS-CoV-2 <sup>o</sup>] [Coronavirus <sup>o</sup>] [,] [the virus that causes COVID-19 <sup>o</sup>] [the][COVID-19 virus<sup>o</sup>]  
[in 3 minutes]  
A disinfectant cloth [for] [use on telephone surfaces and other telecommunications equipment surfaces]  
An efficient way to clean [and disinfect<sup>2</sup>] [and/or sanitize]  
An effective way to clean, disinfect and deodorize against odor causing organisms on hard, nonporous surfaces<sup>2</sup>  
An effective way to disinfect hard, nonporous environmental surfaces  
[Antibacterial] [Antimicrobial] health club equipment wipe  
[Antibacterial] [Antimicrobial] hotel guest room wipe  
[Antibacterial] [Antimicrobial] shopping cart wipe  
Antibacterial Bathroom Wipe[s]  
Antibacterial Cell Phone wipe  
Antibacterial [formula] [cleans and disinfects<sup>2</sup>]  
Antibacterial house [household] [surface] cleaner [cloth] [wipes] [formula]  
[Antimicrobial] [antibacterial] [disinfecting] and scrubbing action all in one  
Bactericidal  
Bactericidal in the presence of organic soil (5% blood serum) against [insert any bacteria from List of  
bacteria]. [This product [product name]] is  
Bath and Kitchen [disinfectant] wipes [for hard, nonporous surfaces]  
[Bigger][Larger][And][Thicker] [And][Stronger] than [standard] [Xin x Xin] [X x Xin] [X x X"] [disinfecting] wipes.  
Clean [& disinfect any room, any time<sup>2, †</sup>]  
Clean & disinfect hard, nonporous surfaces [easily] all over the house [throughout your home]<sup>2</sup>  
Clean and disinfect hard, nonporous personal protective equipment [may list use surfaces]<sup>2</sup>.  
[Use [this product or product name] to]  
Clean and disinfect on-the-go<sup>2, †</sup>  
[Clean] and [Sanitize] and [Disinfect<sup>2</sup>] hard, nonporous nonfood contact surfaces [in any room in the house] [throughout  
the house]  
Cleaner [and disinfectant towel [cloth]<sup>2</sup>]  
Cleaning [and disinfecting<sup>2</sup>] your [home] [kitchen] [bathroom] [office] has never been this easy  
Cleans as it disinfects in one easy step<sup>2,3</sup>  
Cleans and disinfects [and sanitizes] [cell phone surfaces] [telephone surfaces,] [telephone equipment surfaces,]  
[dictating equipment surfaces,] [and other telecommunications equipment [surfaces] [devices]]<sup>2</sup>  
Cleans and disinfects [and sanitizes] common hard, nonporous, nonfood contact surfaces<sup>2</sup>  
Clean[s] and disinfect[s] [and sanitizes] finished floors, sinks and tubs. [Use to]<sup>2</sup>  
[Cleans and] [disinfect[s]<sup>2</sup>] [and sanitizes] the following hard, nonporous, nonfood contact surfaces [insert use surfaces].  
[[This product]]  
[Cleans] [and] [disinfects<sup>2</sup>] [and sanitizes] without scratching [surfaces] [job] [work] [site] [area]

**THE INFORMATION IN THIS BOX IS NOT PART OF THE LABELING**

Statements in brackets [ ] are optional or instructional. Statements in italics are instructional. The terms "wipe(s)", "towel(s)", "towelette(s)" and "cloth(s)" can be used interchangeably throughout except for the product primary brand name which can be only changed by notification or amendment. The word "and" and symbol "&" can be used interchangeably. Capitalization may be used interchangeably. Plurals or singular, bold and italics are all variable unless specified in 40 CFR. Graphics, symbols, and logos may vary in color. Pictures of use sites/surfaces and dispensing directions, are simply descriptive and may be interchanged for other similar images. All use surfaces and/or use sites on the label may be used in conjunction with an image of the use surface and/or use site.

April 1, 2022

Cleans and disinfects approximately [amount] square feet of hard, nonporous floors<sup>2</sup>

[calculate per use directions and towel size]

Cleans [and disinfects<sup>2</sup>] hard, nonporous floors [wall to wall]

Cleans, Disinfects & Deodorizes <sup>2</sup>

[Cleans] disinfects and kills [99.9% of] [germs<sup>1</sup>] [or household bacteria<sup>\*\*</sup>]<sup>2</sup> on hard, nonporous surfaces

[Cleans] disinfects and kills [viruses\*] [and household bacteria<sup>\*\*</sup>]<sup>2</sup> on hard, nonporous surfaces

[Cleans] [Disinfects] [Exterior Toilet Surfaces] [Bathroom Sinks and Counters]<sup>2</sup>

[Cleans] [disinfects] [sanitizes] [Cleaner and disinfectant] [in one] [all in one [easy] step[▲]]<sup>2</sup>

[Cleans] sanitizes, and disinfects [and deodorizes]<sup>2</sup>

[Convenient] way to [clean] [and] disinfect your [household] [kitchen] hard, nonporous, nonfood contact surfaces. [This product] [is][the]<sup>2</sup>

Convenient way to keep your [home] [office] [surroundings [environment] [looking] [just] clean[ed] [and disinfected<sup>2</sup>] [sanitized]

Covers [X%] more area than standard [Xin x Xin] [X x Xin] [X x X"] [disinfecting] wipe

Cuts grease♦ and kills household bacteria <sup>\*\*</sup> on hard, nonporous surfaces

Deliver[s] non-acid disinfectant [sanitizer] and cleaning performance<sup>2</sup>

[Deodorizes] and [disinfects<sup>2</sup>] [sanitizes] as it cleans

Destroys flu virus\* (\*Influenza A H3N2 virus)

Destroys household [germs<sup>1</sup>] [or bacteria<sup>\*\*</sup> and viruses\*] on hard, nonporous surfaces

[Disinfect<sup>2</sup>] [clean] [your cart] before you shop

Disinfects and cleans tough stains<sup>2</sup>

[Disinfect[s]] [and clean] [clean] many spaces at home and [work] [and] [on-the-go<sup>‡</sup>]<sup>2</sup>

[Disinfects] [and] [kills] [SARS-CoV-2 <sup>Φ</sup>] [Coronavirus <sup>Φ</sup>] [,] [the virus that causes COVID-19 <sup>Φ</sup>] [the] [COVID-19 virus <sup>Φ</sup>] on hard, nonporous surfaces

Disinfects bathroom bacteria (Staph<sup>^</sup>, Salmonella<sup>z</sup>, E. coli<sup>P</sup>, Strep<sup>m</sup>)

Disinfects [health club equipment] [treadmill handles][elliptical handles][exercise bike handles][weight benches]

[Disinfects][Kills][Effective against] Norovirus [Feline Calicivirus] in 5 [five] minutes

[Disinfects][Kills] [Effective against] [the cold virus][Rhinovirus] [Rhinovirus Type I]] in 5 [five] minutes

[Disinfect] [sanitize] and/or [touch-up clean] [Use [the product] [the wipes] to]

Disinfect [sanitize] and scrub clean

Disinfect, [sanitize] clean and deodorize hard, nonporous surfaces [in rest rooms and toilet areas, behind and under sinks and counters, garbage cans and garbage storage areas, and other places where bacterial growth can cause malodors.]<sup>2</sup>

Disinfect [sanitize] hard, nonporous, nonfood contact surfaces [Use to]

Disinfectant [sanitizer] [disinfecting] [sanitizing] home [house] [household] [surface] cleaner [cloth]

Disinfectant [sanitizer] on all hard, nonporous surfaces in inedible product processing areas, non-processing areas [and/or exterior areas]

Disinfecting [sanitizing] [cleaning] [wipes] [formula]

Disinfects household kitchen and bathroom bacteria<sup>\*\*</sup> on hard, nonporous surfaces

Disinfects in [just] three [3] minutes

Disinfects [kitchen] [bathroom] [hard, nonporous floors] [bacteria] [<sup>\*\*</sup>] [and] [germs<sup>1</sup>] [viruses\*] [on hard, nonporous, nonfood contact surfaces] in [just] 3 minutes

[\*Effective against the cold virus caused by Coronavirus and flu virus caused by Influenza A H3N2 virus]

Disinfects [odor causing] [household] [kitchen and/or bathroom] bacteria<sup>\*\*</sup>

Disinfects [sanitizes] [as it cleans] [and scrubs in one easy step ▲]<sup>3,4</sup>

Disinfects [sanitizes] hard, nonporous, nonfood contact environmental surfaces <sup>4</sup>

Disinfects [sanitizes] headsets and telephones <sup>4</sup>

Disinfects [sanitizes] while cleaning [up] stubborn messes <sup>4</sup>

[DIY][Project][Disinfecting][Wipes]

Dual action cleans up stubborn messes while it disinfects [sanitizes]<sup>2</sup>

#### **THE INFORMATION IN THIS BOX IS NOT PART OF THE LABELING**

Statements in brackets [ ] are optional or instructional. Statements in italics are instructional. The terms "wipe(s)", "towel(s)", "towelette(s)" and "cloth(s)" can be used interchangeably throughout except for the product primary brand name which can be only changed by notification or amendment. The word "and" and symbol "&" can be used interchangeably. Capitalization may be used interchangeably. Plurals or singular, bold and italics are all variable unless specified in 40 CFR. Graphics, symbols, and logos may vary in color. Pictures of use sites/surfaces and dispensing directions, are simply descriptive and may be interchanged for other similar images. All use surfaces and/or use sites on the label may be used in conjunction with an image of the use surface and/or use site.

April 1, 2022

Each pre-moistened and disposable wipe cleans, deodorizes and kills household germs<sup>1</sup> [*or bacteria\*\**] all around your [home] [business] [office] [workplace] hard, nonporous surfaces

Each pre-moistened, disposable wipe [actually] kills germs<sup>1</sup> [*or bacteria*] [even bacteria that cause odor] [wherever you use it]

[Easily] [Effectively] [Conveniently] cleans [and] [disinfects<sup>2</sup>]

[Easy] [and convenient] way to [clean] [sanitize] [touch-up] [and] [disinfect] [hard, nonporous nonfood contact surfaces] [your bathroom [*or exterior toilet*] surfaces] [This product *or product name* is the]

Easy way to [clean all over the house] [disinfect your bathroom *or exterior toilet* surfaces]

Easy way to [clean] [and] [disinfect] [sanitize] [the following hard, nonporous, nonfood contact surfaces]] [anywhere you travel]: [*insert use surfaces*]

Effective against bathroom bacteria\*\* and viruses\*

Effective against [*insert organisms*]

Effective against flu virus\* \*Influenza A H3N2 virus

Effective against household germs<sup>1</sup> [and/*or bacteria\*\**] [from sneezing/coughing/touching] on hard, nonporous surfaces

Effective against [SARS-CoV-2<sup>Φ</sup>] [Coronavirus<sup>Φ</sup>] [,] [the virus that causes COVID-19<sup>Φ</sup>] [the] [COVID-19 virus<sup>Φ</sup>]

[Effective against] [Kills] SARS-CoV-2<sup>Φ</sup> [virus] [,] [the virus that caused the COVID-19]

Effective against SARS-CoV-2<sup>Φ</sup> [virus]

Effective against the flu virus\* (\*Influenza A H3N2 virus)

Effective [at] [disinfecting<sup>2</sup>] [and] [sanitizing]

[Effective] [cleaning] [disinfecting<sup>2</sup>] [sanitizing] has never been [faster *or easier*] [more convenient]

Effective [disinfecting] [sanitizing] for use in [*insert use sites*]

Effective in 3 minutes against *Escherichia coli (E. coli)*, *Staphylococcus aureus*, *Salmonella enterica*, *Pseudomonas aeruginosa*, and *Klebsiella pneumoniae*

Effective in 3 minutes against [SARS-CoV-2<sup>Φ</sup>] [Coronavirus<sup>Φ</sup>] [,] [the virus that causes COVID-19<sup>Φ</sup>] [the] [COVID-19 virus<sup>Φ</sup>]

Effective [in 3 minutes] [in 5 minutes] against the following every time you wipe<sup>2</sup>:

[*Insert organism name*]

[ household [kitchen] [bathroom] bacteria\*\* on hard, nonporous surfaces

Odor-causing bacteria

*Escherichia coli (E. coli)*, *Klebsiella pneumoniae*, *Pseudomonas aeruginosa*, *Staphylococcus aureus* (Staph), and *Salmonella enterica (Salmonella)* [bacteria that cause food-borne illnesses]

\*Influenza A H3N2 virus [flu virus\* and/*or cold virus\**], \*Herpes Simplex Type 2

Effective in the presence of 5% blood serum contamination [*if HIV / HBV / HCV listed on the label add: preclean for HIV / HBV / HCV*]

Effectively disinfects in the presence of organic soil (5% blood serum) [*if HIV / HBV / HCV listed on the label add: preclean for HIV / HBV / HCV*]

Effectively disinfects [sanitizes] common hard, nonporous, nonfood contact household surfaces

[Eliminates 99.9%] [Destroys] [Gets rid of] [99.9% of] [bacteria] [germs<sup>1</sup>] [all] around [your] [the]

[bathroom] [restroom] [kitchen] [school] [classroom] [home] [house] [office]

Eliminates [removes] 99.9% [bacteria] [viruses\*] [germs<sup>1</sup>] from [*insert use surfaces*]

Eliminates 99.9% [SARS-CoV-2<sup>Φ</sup>] [Coronavirus<sup>Φ</sup>] [,] [the virus that causes COVID-19<sup>Φ</sup>] [the] [COVID-19 virus<sup>Φ</sup>]

Everyday, every room disinfectant [sanitizer]

Exhibits effective virucidal\* activity; kills \*Influenza A H3N2 virus [(representative of the flu virus)] and \*Herpes Simplex Type 2

Extra-large<sup>Φ</sup>] [disinfecting] [wipe[s]] [for extra cleaning] [so you can [do] [clean] [X%] [more] [with] [it] [them] [than] [regular size wipes] [clean] [more] [surface] [area[s]] [than] [our] [regular] [standard] [Xin x Xin] [X x Xin] [X x X"] [size] [wipe[s]]

[Fast] [Convenient] [Portable] way to [sanitize] [disinfect] hard, nonporous, nonfood contact [household] surfaces

Fast convenient way to [clean] [disinfect] [sanitize] hard, nonporous, nonfood contact surfaces [anywhere you travel]

[Finally] a wipe that cleans [and disinfects] [and sanitizes]

#### **THE INFORMATION IN THIS BOX IS NOT PART OF THE LABELING**

Statements in brackets [ ] are optional or instructional. Statements in italics are instructional. The terms "wipe(s)", "towel(s)", "towelette(s)" and "cloth(s)" can be used interchangeably throughout except for the product primary brand name which can be only changed by notification or amendment. The word "and" and symbol "&" can be used interchangeably. Capitalization may be used interchangeably. Plurals or singular, bold and italics are all variable unless specified in 40 CFR. Graphics, symbols, and logos may vary in color. Pictures of use sites/surfaces and dispensing directions, are simply descriptive and may be interchanged for other similar images. All use surfaces and/or use sites on the label may be used in conjunction with an image of the use surface and/or use site.

April 1, 2022

Fights germs<sup>1</sup> in the workplace  
Fits Swiffer® Sweeper [poles] for [spot floor] [cleaning] [and][disinfecting] [Swiffer® is a registered trademark of The Proctor & Gamble Company]  
For general [cleaning] [and] [disinfecting] [sanitizing] [nonfood contact] hard, nonporous surfaces  
For [professional] [pro] [commercial] [industrial] [cleaning and] disinfecting  
For use against [SARS-CoV-2 <sup>Φ</sup>] [Coronavirus <sup>Φ</sup>] [,] [the virus that causes COVID-19 <sup>Φ</sup>] [the] [COVID-19 virus <sup>Φ</sup>]  
Formulated for use in daily maintenance programs with a balance of detergents, biocides and malodor counteractants that deliver effective cleaning, disinfecting and malodor control.  
Formulated to disinfect hard, nonporous, nonfood contact inanimate environmental surfaces including: [This product or *product name*]  
[For use on] [disinfects] [cleans] bathroom and kitchen floors  
Germicidal<sup>1</sup> [house] [household] [surface] disinfectant [cloth]  
Germ-killing<sup>1</sup> [or bacteria-killing] household disinfectant [cloth]  
Good for [cleaning][and][deodorizing][and] disinfecting sports equipment  
Good for disinfecting after DIY projects  
Good for disinfecting [plumbing][bathroom][cleaning][tools] [and][implements]  
Good for disinfecting sports equipment [and] [gear]  
[such as][including][football][basketball][lacrosse][field][hockey][soccer][and][camping][fishing][gear]  
Great on-the-go disinfectant [cloth] †  
[Helps] [kill][s] [eliminate][s] odor-causing bacteria  
Hospital disinfectant [disinfection] [*use only when hospital use sites on label*]  
Household [disinfectant] [sanitizer]

[*insert product name*] or [This product] cleans, deodorizes, and disinfects common hard, nonporous, nonfood contact indoor and outdoor surfaces. These pre-moistened, [*insert scent from list above*] wipes contain scrubbing fibers for effective everyday cleaning and for tough stains, such as soap scum♦ and baked-on grease♦. Effective in 3 minutes against *Staphylococcus aureus*, *Salmonella enterica*, *Klebsiella pneumoniae*, *Escherichia coli* and *Pseudomonas aeruginosa*. Effective against flu virus\* (\*Influenza A H3N2 virus).<sup>2</sup>

Keep surface wet for 3 minutes to kill [SARS-CoV-2 <sup>Φ</sup>] [Coronavirus <sup>Φ</sup>] [,] [the virus that causes COVID-19 <sup>Φ</sup>] [the] [COVID-19 virus<sup>Φ</sup>]  
Kills 99.9% of bacteria [*insert any bacteria from List of bacteria*] [This product [*or product name*]]  
Kills 99.9% [of] [the] [SARS-CoV-2 <sup>Φ</sup>] [Coronavirus <sup>Φ</sup>] [,] [the virus that causes COVID-19 <sup>Φ</sup>] [the][COVID-19 virus <sup>Φ</sup>]  
Kills 99.9% [of] [the] [SARS-CoV-2 <sup>Φ</sup>] [Coronavirus <sup>Φ</sup>] [,] [the virus that causes COVID-19 <sup>Φ</sup>] [the] [COVID-19 virus <sup>Φ</sup>]  
[in 3 minutes]  
Kills [99.9% of] [ household] [bacteria \*\*] [household germs<sup>1</sup>] [in 3 minutes] on hard, nonporous, nonfood contact surfaces  
Kills [household] bacteria\*\* [left [behind] by shoes and/or pets and/or tracked-in dirt] on hard, nonporous surfaces  
Kills 99.9% of [*insert organism*] in 3 minutes [on hard, nonporous, nonfood contact surfaces]  
Kills 99.9% of [or removes or effective against] [odor-causing] [household] [kitchen and/or bathroom] bacteria\*\* in 3 minutes on hard, nonporous surfaces  
Kills 99.9% of germs<sup>1</sup> on hard, nonporous, nonfood contact surfaces  
[Kill[s] [99.9% of] [effective against] [disinfect] [bacteria [*Salmonella* <sup>2</sup>]] [that cause odor] [that cause scum and slime on hard, nonporous surfaces] in just] [3 minutes]  
Kills [99.9%] of germs<sup>1</sup> on [health club equipment] [treadmill handles] [elliptical handles] [exercise bike handles] [weight benches]  
Kill[s] 99.9% of [remove[s]] [effective against] [odor-causing] [household] [kitchen and/or bathroom bacteria\*\*] on hard, nonporous surfaces  
Kills flu virus\* (\*Influenza A H3N2 virus) [flu-causing virus]  
Kills a flu-causing virus\* (\*Influenza A H3N2 virus)

**THE INFORMATION IN THIS BOX IS NOT PART OF THE LABELING**

Statements in brackets [ ] are optional or instructional. Statements in italics are instructional. The terms “wipe(s)”, “towel(s)”, “towelette(s)” and “cloth(s)” can be used interchangeably throughout except for the product primary brand name which can be only changed by notification or amendment. The word “and” and symbol “&” can be used interchangeably. Capitalization may be used interchangeably. Plurals or singular, bold and italics are all variable unless specified in 40 CFR. Graphics, symbols, and logos may vary in color. Pictures of use sites/surfaces and dispensing directions, are simply descriptive and may be interchanged for other similar images. All use surfaces and/or use sites on the label may be used in conjunction with an image of the use surface and/or use site.

April 1, 2022

Kills Avian Influenza A on hard, nonporous environmental surfaces [testing was conducted with 5% bovine serum so pre-cleaning wording not required]

Kills bacteria and viruses\* in the bathroom or on the exterior toilet surfaces

Kills bacteria in 3 minutes

Kills [bacteria\*\*] [viruses\*] while it cleans [tough] [bathroom messes]

Kills household bacteria\*\* [and viruses\*] on hard, nonporous surfaces

Kills [Kitchen] [Household] [Bathroom] Germs<sup>1</sup> [or bacteria\*\*] on hard, nonporous surfaces

Kills the COVID-19 virus <sup>Φ</sup>

Kills [disinfects] [sanitizes] [effective against] germs<sup>1</sup>, [including cold & flu viruses\*] [including [SARS-CoV-2 <sup>Φ</sup>] [Coronavirus <sup>Φ</sup>] [,] [the virus that causes COVID-19 <sup>Φ</sup>] [the] [COVID-19 virus<sup>Φ</sup>]] [in 3 minutes]

[Kills] [Effective against] [MRSA] [(Methicillin-Resistant *Staphylococcus aureus*)]

Kills [eliminates 99.9%] [99.9%] [insert any bacteria from List of bacteria] on hard, nonporous, nonfood contact surface

Kills [eliminates 99.9%] [disinfects] [kitchen] [bathroom] [household] [bacteria\*\*] [viruses\*] [germs<sup>1</sup>]

Kills 99.9% of Viruses\* & Bacteria\*\*

\*Effective against the cold virus caused by Human Coronavirus and flu virus caused by Influenza A virus H3N2

[Kills] [Eliminates] [Removes] [Destroys] 99.9% of [bacteria] [germs<sup>1</sup>] [and leaves surfaces] [clean and] [disinfected<sup>2</sup>]

Kills flu virus\* (\*Influenza A H3N2 virus) or [Kills Influenza A H3N2 virus]

Kills [germs<sup>1</sup> [or bacteria] ordinary soap can't] [germs<sup>1</sup> [or bacteria] that ordinary cleaners don't] [germs<sup>1</sup> [or bacteria] while it cleans]

Kill germs<sup>1</sup> [Use this product to]

Kills household [exterior] toilet surface [bathroom germs<sup>1</sup> [or bacteria]]

[Kills Influenza A] H3N2 virus (flu virus) and \*Herpes Simplex Type 2 virus

Kills [99.9% of] odor-causing bacteria

Kill[s] [remove[s]] [effective] against household viruses\* [\*Herpes & flu (Influenza A H3N2 virus)] on hard, nonporous surfaces

Kill[s] [remove[s]] [effective] against [the following] [organisms]]

[HIV] Human immunodeficiency virus type 1

[The virus\* that causes the] [flu (\*Influenza A H3N2 virus)]

[insert from List of bacteria and/or viruses]

Kills SARS-CoV-2 <sup>Φ</sup> [virus] [on hard nonporous surfaces]

Kills [SARS-CoV-2 <sup>Φ</sup>] [Coronavirus <sup>Φ</sup>] [,] [the virus that causes COVID-19 <sup>Φ</sup>] [the] [COVID-19 virus<sup>Φ</sup>]

Kills [Severe Acute Respiratory Syndrome-Related Coronavirus 2 <sup>Φ</sup>] [,] [the virus that causes COVID-19 <sup>Φ</sup>] [COVID-19 virus<sup>Φ</sup>] [on hard nonporous surfaces]

Kills [the] cold [&] [and] [flu] virus[es]\*[,] [*E. coli*<sup>P</sup>] [*Salmonella*<sup>2</sup>] [Strep<sup>T</sup>] [MRSA<sup>U</sup>] [Staph<sup>A</sup>] [*Listeria*<sup>Q</sup>] (\*Effective against the cold virus caused by Human Coronavirus [and flu virus caused by Influenza A H3N2 virus])

Kills [the] cold [and flu] virus[es]\* (\*Effective against the cold virus caused by Human Coronavirus [and flu virus caused by Influenza A H3N2 virus])

Kills [the flu virus\* (\*Influenza A H3N2 virus)]

Kills [the] virus causing COVID-19<sup>Φ</sup>

Kills [the] cold virus[es] caused by Human Coronavirus [and Rhinovirus Type 1A]

[Kitchen] and/or [Bathroom] [disinfecting] wipes

Leaves hard, nonporous, nonfood contact surfaces disinfected

Leaves [household] [bathroom] [restroom] surfaces sanitary

Leaves your [home] [kitchen] [bathroom] [office] clean [and] disinfected [and smelling fresh]

Made by the manufacturer of Sani-Cloth® [brand] [disinfecting] [wipes]

Meets efficacy standards for [hospital type] disinfectant [or sanitizing] wipes. [This product]

Minimizes cross contamination of SARS-CoV-2 <sup>Φ</sup> [virus] between treated surfaces

Multi-purpose [cleaner] [and][disinfectant<sup>2</sup>] for [arts and crafts][projects]

Multi-purpose cleaner [and disinfectant<sup>2</sup>]

Multi-room [or Multi-Purpose] disinfectant<sup>2</sup> [or disinfecting<sup>2</sup>] [and/or cleaner]

Multi-surface<sup>‡</sup> [or Multiple surfaces<sup>‡</sup>] [cleaning] [and] [disinfecting<sup>2</sup>] [wipes]

#### **THE INFORMATION IN THIS BOX IS NOT PART OF THE LABELING**

Statements in brackets [ ] are optional or instructional. Statements in italics are instructional. The terms "wipe(s)", "towel(s)", "towelette(s)" and "cloth(s)" can be used interchangeably throughout except for the product primary brand name which can be only changed by notification or amendment. The word "and" and symbol "&" can be used interchangeably. Capitalization may be used interchangeably. Plurals or singular, bold and italics are all variable unless specified in 40 CFR. Graphics, symbols, and logos may vary in color. Pictures of use sites/surfaces and dispensing directions, are simply descriptive and may be interchanged for other similar images. All use surfaces and/or use sites on the label may be used in conjunction with an image of the use surface and/or use site.

April 1, 2022

Multi-purpose disinfecting for multiple surfaces<sup>‡</sup>

No-rinsing required *[use with sanitizing directions or nonfood contact surface disinfection only]*

[Now] tested [and proven [effective]] to kill [the] [COVID-19 virus <sup>Φ</sup>] [SARS-CoV-2 <sup>Φ</sup>]

[Now] tested [and proven [effective]] against [the] [COVID-19 virus <sup>Φ</sup>] [SARS-CoV-2 <sup>Φ</sup>]

[Now] tested [and proven [effective]] to help reduce [cross contamination of] [the] [COVID-19 virus <sup>Φ</sup>] [SARS-CoV-2 <sup>Φ</sup>] between treated surfaces

One step▲ cleaning [*and/or* disinfecting] [*and/or* deodorizing] [disinfect *and/or* touch-up clean] [cleans *and/or* disinfects *and/or* deodorizes] [anytime] [daily] [every day] [in one easy step ▲] [everywhere] [anywhere] [on hard, nonporous, nonfood contact,] [bathroom *and/or* kitchen] inanimate surfaces *or* [on household surfaces] <sup>2</sup>

One step▲ disinfectant cleaner that is effective against a broad spectrum of bacteria when used as directed <sup>2</sup>

On hard, nonporous, nonfood contact, inanimate environmental surfaces this product kills the following [bacteria] [viruses\*] [germs\*]:

On-the-go [easy to carry] disinfectant [soft] [pack] <sup>‡</sup>

Perfect for disinfecting [sanitizing] [exterior toilet surfaces *or* around the exterior toilet surface]

Plant based [wipes] with [germ<sup>1</sup> killing] [disinfecting] [power] [ability][capability]

Pre-moistened [cleaner and] disinfectant towel [*or* cloth]

Pre-moistened [pre-soaked *or* pre-sprayed *or* pre-wetted] towels are effective for everyday cleaning, deodorizing and disinfecting. Effective in 3 minutes against *Staphylococcus aureus*, *Salmonella enterica*, *Klebsiella pneumoniae*, *Escherichia coli* and *Pseudomonas aeruginosa*. Kills Influenza A H3N2 virus. Cleans and disinfects common hard, nonporous, nonfood contact surfaces. General use: Kitchen and bathroom surfaces, doorknobs, telephones, cribs and toys.

[Pre-moistened] [wet] disinfecting [textured] [antibacterial] [wipes] [towelettes][towel[s]] [cloths]

[Product name] [*or* this product] helps to control[s] cross-contamination of household germs<sup>1</sup> [*or* bacteria \*\*] on treated hard, nonporous, nonfood contact surfaces [and has a clean, fresh scent]

[Product name] [*or* this product] Help[s] control household germs<sup>1</sup> [*or* bacteria \*\*] between treated hard, nonporous surfaces while keeping your office [workplace] [station] [business] clean and dust-free

Proven efficacy against [SARS-CoV-2 <sup>Φ</sup>] [Coronavirus <sup>Φ</sup>] [,] [the virus that causes COVID-19 <sup>Φ</sup>] [the] [COVID-19 virus<sup>Φ</sup>]

Proven “one-step” ▲ disinfectant [cleaner] which is effective in the presence of 5% serum contamination <sup>2,3</sup>

[Ready to] [great for] [use] [on] [cleaning and disinfecting] [cleaning and sanitizing] the following hard, nonporous , nonfood contact [specialty] surfaces: *[List sites]<sup>‡</sup>*

Ready to [use] [clean] [disinfect] [on] the following [kitchen/bathroom/household/public] hard, nonporous, nonfood contact surfaces: *[List sites]*

Removes [bacteria] [viruses\*] [germs<sup>1</sup>] *[insert organisms]*

Removes [SARS-CoV-2 <sup>Φ</sup>] [Coronavirus <sup>Φ</sup>] [,] [the virus that causes COVID-19 <sup>Φ</sup>] [the] [COVID-19 virus<sup>Φ</sup>]

[Sanitize] [Disinfect] your hard, nonporous, nonfood contact household surfaces [including] [booster seats] [strollers] [car seats]

[Sanitizes] [Disinfects] hard, nonporous , nonfood contact surfaces [that people touch]

[Scrubbing] [Extra Scrubbing] [household] [surface] [disinfecting] [wipe[s]] [cleaner][product]

Scrubbing [power] [side] of a sponge in a disinfecting wipe

Soft side for wiping [cleaning] dirt away and disinfecting

[So] hard, nonporous, nonfood contact [household] surfaces are more than [just] [clean] [they're] [sanitized] [and] [disinfected]

Telephone [cleaner [and] disinfectant wipes]

Textured cloths [wipes][towelettes]with [disinfecting][and][scrubbing][and][cleaning] power

The 3-minute germicidal wipe<sup>[6]</sup> *Note: Qualifier must be used when 5 minute organisms are on label*

The easy way to clean [and disinfect<sup>2</sup>] [all over] [your] [the] [bathroom] [kitchen] [house] [office] [workplace]

The great alternative to regular mopping

The same formula as Sani-Cloth® [brand]

The smart [way to] clean [and disinfect] [and sanitize]

#### **THE INFORMATION IN THIS BOX IS NOT PART OF THE LABELING**

Statements in brackets [ ] are optional or instructional. Statements in italics are instructional. The terms “wipe(s)”, “towel(s)”, “towelette(s)” and “cloth(s)” can be used interchangeably throughout except for the product primary brand name which can be only changed by notification or amendment. The word “and” and symbol “&” can be used interchangeably. Capitalization may be used interchangeably. Plurals or singular, bold and italics are all variable unless specified in 40 CFR. Graphics, symbols, and logos may vary in color. Pictures of use sites/surfaces and dispensing directions, are simply descriptive and may be interchanged for other similar images. All use surfaces and/or use sites on the label may be used in conjunction with an image of the use surface and/or use site.

April 1, 2022

[The] [A] [smart] [way] [against] [to] [fight] [to] [wipe out] [cold and flu season] [germs<sup>1</sup>] [bacteria<sup>\*\*</sup>] [and] [viruses\*] [grime] [with] [one wipe]

These wipes are a convenient and quick way to disinfect surfaces<sup>‡</sup> all around your [home] [business] [office] [workplace] Thick wet mopping cloths for easy cleaning and disinfecting<sup>2</sup>

3 [three][-] minute contact time <sup>[6]</sup> *Note: Qualifier must be used when 5 minute organisms are on label*

3 [or Three] [-] minute contact time against [SARS-CoV-2 <sup>Φ</sup>] [Coronavirus <sup>Φ</sup>] [,] [the virus that causes COVID-19 <sup>Φ</sup>] [the] [COVID-19 virus<sup>Φ</sup>]

[Touch-up] clean[s] and disinfect[s]] [and sanitize[s]]

Two-in-one action [cleans and disinfects [and sanitizes] in one easy step ▲] <sup>3,4</sup>

Two-in-one wipe

Use in [public] places where germs<sup>1</sup> [or bacteria] may be of concern

Use them *[insert use sites]* [where [bacteria] [viruses\*] [germs<sup>1</sup>] are a concern.]

Use them [on kitchen counters] before and after cooking [to kill] [bacteria] [viruses\*] [germs<sup>1</sup>]<sup>‡</sup>

Use to clean, deodorize, and disinfect hard, nonporous surfaces in the nursery<sup>2</sup>

Use to disinfect hotel room remote controls

Use to disinfect [hard, nonporous, nonfood contact [kitchen] surfaces] [before] [after] [cooking] [preparing] [meals] [dinner]

Use to disinfect [sanitize] hard, nonporous, nonfood contact surfaces [that people touch]

Use to disinfect shopping [grocery] cart handles and shopping [grocery] cart child seats

Use wipes to kill Influenza A H3N2 virus on bathroom and kitchen hard, nonporous, nonfood contact surfaces

Use wipes [to kill *[list organisms]*] on bathroom and kitchen hard, nonporous, nonfood contact surfaces

Versatile [disinfectant [or disinfecting] cleaner]

Virucidal\* [household] [surface] disinfectant [cloth]<sup>‡</sup>

Virucidal\* [Kills viruses\*] \*Kills Influenza A H3N2 virus (flu virus)

Virus\* killing household cleaner <sup>‡</sup>

Wet disinfecting [antibacterial] [floor] [mopping] cloths [with scrubbing fibers]

Wet [household *and/or* disinfecting] wipes<sup>‡</sup>

Wipe[s] [away] [out] 99.9% [of] [SARS-CoV-2 <sup>Φ</sup>] [Coronavirus <sup>Φ</sup>] [,] [the virus that causes COVID-19 <sup>Φ</sup>] [the] [COVID-19 virus <sup>Φ</sup>] [on hard, nonporous surfaces]

Wipe away 99.9% of the flu virus\* [this season] (\*Influenza A H3N2 virus)

Wipe down commonly touched hard, nonporous, nonfood contact surfaces [around the kitchen] including *[insert use surfaces]* [bacteria] [viruses\*] [germ<sup>1</sup>] [throughout the house]

Wipe that disinfects [or sanitizes] [while it cleans up [stubborn] [stuck-on] [messes]]

Wipes out 99.9% of household germs<sup>1</sup> [microbes] [or bacteria<sup>\*\*</sup>] on hard, nonporous surfaces

Wipes out 99.9% of germs<sup>1</sup> [or bacteria] commonly found in your home

Wipes out 99.9% of flu virus\* (\*Influenza A H3N2 virus) [flu-causing virus\* (\*Influenza A H3N2 virus)]

[Wipes out] [Kills] 99.9% of [household] [bacteria<sup>\*\*</sup>] [viruses\*] [germs<sup>1</sup>] on hard, nonporous surfaces

[Wipes out] [Kills] 99.9% of viruses\* and bacteria [including the flu virus\* (\*Influenza A H3N2 virus)]

[Wipes out] [Kills] [eliminates] 99.9% of *[list organisms]* in [just] [3 minutes]

[Wipes out] [Kills] germs<sup>1</sup> [or bacteria] [while it cleans] [that cause odor]

[Wipes out] [Kills] 99.9% of [the] flu virus\* (\*Influenza A H3N2)

Wiping [smooth] [soft side] for cleaning dirt away and disinfecting

[With proven] Antibacterial action

Worry-free [disinfecting] [sanitizing] [cleaning]

#### **THE INFORMATION IN THIS BOX IS NOT PART OF THE LABELING**

Statements in brackets [ ] are optional or instructional. Statements in italics are instructional. The terms “wipe(s)”, “towel(s)”, “towelette(s)” and “cloth(s)” can be used interchangeably throughout except for the product primary brand name which can be only changed by notification or amendment. The word “and” and symbol “&” can be used interchangeably. Capitalization may be used interchangeably. Plurals or singular, bold and italics are all variable unless specified in 40 CFR. Graphics, symbols, and logos may vary in color. Pictures of use sites/surfaces and dispensing directions, are simply descriptive and may be interchanged for other similar images. All use surfaces and/or use sites on the label may be used in conjunction with an image of the use surface and/or use site.

April 1, 2022



### **Nonfood Contact Sanitizing Claims**

Effective [sanitizing] for use in [*insert use sites*]

Ideal for sanitizing [high chairs<sup>‡</sup>] [,] [car seats<sup>‡</sup>] [,] [toys<sup>‡</sup>][and] [toy chests]

Kills 99.9% of bacteria on hard, nonporous floors [in 15 seconds] [5]

Kills 99.9% of [*organism*] and [*organism*] in 15 seconds on hard, nonporous, nonfood contact surfaces [5]

No-rinse sanitizing [wipes] [*use with sanitizing directions or nonfood contact surface disinfection only*]

Pre-moistened [wet] household cleaning [sanitizing] wipe

Ready to [sanitize] [on] the following [bathroom/household/public] hard, nonporous, nonfood contact surfaces: [*List sites*]

Sanitize[r] [s]

[Sanitize] [deodorize] hard, nonporous, nonfood contact surfaces

Sanitize hard, nonporous nonfood contact surfaces [Including toilet seats]

Sanitize hard, nonporous, nonfood contact, pre-cleaned surfaces

Sanitizes [TV] [DVD] [Video Game] remote controls

Use to sanitize hard, nonporous , nonfood contact surfaces

**[15-second sanitization claims:]** [*Link (with symbol or footnote) all 15 second claims to one or more bacteria listed below or list bacteria next to claim*]

15-second sanitization

15 seconds is all it takes to kill 99.9% of bacteria[5]

Effective in 15 seconds against the following every time you wipe[5]:

[*insert organism name*]

household [kitchen] [bathroom] bacteria\*\* on hard, nonporous surfaces

[ Odor-causing bacteria]

[*Escherichia coli (E. coli), Klebsiella pneumoniae, Pseudomonas aeruginosa, Staphylococcus aureus*

(Staph), and *Salmonella enterica (Salmonella)*]

Kills [99.9% of] [household] bacteria\*\* in 15 seconds [Effective against *Escherichia coli (E. coli), Salmonella enterica*

(*Salmonella*), *Staphylococcus aureus* (Staph), and *Pseudomonas aeruginosa*.] [5] on hard, nonporous surfaces

[Kill[s] [99.9% of] [effective against] [bacteria [*Salmonella* <sup>‡</sup>]] [that cause odor] [that cause scum and slime on hard, nonporous, nonfood contact surfaces] in just] 15 seconds [5]

Kill[s] 99.9% of [remove[s]] [effective against] [odor-causing] [household] [kitchen *and/or* bathroom bacteria\*\*] in 15 seconds[5] on hard, nonporous surfaces

Kills 99.9% of bacteria\*\* in 15 seconds [5]

Sanitizes [household] [bathroom] hard, nonporous, nonfood contact surfaces [in just 15 seconds]

Sanitizes in [just] 15 seconds

[Wipes out] [Kills] 99.9% of bacteria in [just] [15] second[5]

### **THE INFORMATION IN THIS BOX IS NOT PART OF THE LABELING**

Statements in brackets [ ] are optional or instructional. Statements in italics are instructional. The terms “wipe(s)”, “towel(s)”, “towelette(s)” and “cloth(s)” can be used interchangeably throughout except for the product primary brand name which can be only changed by notification or amendment. The word “and” and symbol “&” can be used interchangeably. Capitalization may be used interchangeably. Plurals or singular, bold and italics are all variable unless specified in 40 CFR. Graphics, symbols, and logos may vary in color. Pictures of use sites/surfaces and dispensing directions, are simply descriptive and may be interchanged for other similar images. All use surfaces and/or use sites on the label may be used in conjunction with an image of the use surface and/or use site.

April 1, 2022

### **General Cleaning and Deodorizing Claims**

All-in-one [cleaning power] [for an easy clean]

All you need [to clean] [for] [tough] [messes] [jobs]

An effective counter cleaner

Available in [*insert scent*] for daily cleaning] [and in] [*insert scent*] [with scrubbing action] for tough jobs]

Cleans hard, nonporous surfaces [including toilet seats]

Clean with just a wipe or touch [up]

Cleaner [*the following is for use in conjunction with cleaning claims only:* [Big] [Bold] [Powerful] [Fast] [Cleaner] [or Cleaning]]!

Cleaner [quick] [easy] [effective] [fast] [effective] [convenient]

Cleaning [of] floors

Cleans and deodorizes in one easy step

Cleans [&][and][Shines]

Cleans faster [because the [scrubbing] [texture] removes [stubborn] [stuck on] [dirt] [messes]]

Cleans hard to remove stains

Cleans on the spot with [fresh] [pleasant] [nice] [good] [great] [strong] [relaxing] [pleasing] [warm] [orange] [lemon] [lavender] fragrance

Cleans [removes] [good on] [good for] [works great on] [great on] [tough] [soap scum♦] [baked-on] [grease♦] [soils] [messes] [spaghetti sauce] [kitchen messes] [dirt] [soils] [bathroom messes]

Cleans [quickly] [rapidly] [swiftly] [fast] [in seconds]

Cleans things you never thought a wipe could

Cleans to restore a shine!

Cleans [tough] [messes] [grease♦] [baked on grease♦] [messes]

[Cleans] [deodorizes] [eliminates odors] [tough messes]

[Cleans] [Tubs and Showers] [Tubs & Showers]

Cuts grease♦ [and grime]

Cuts the toughest grime and grease♦ without scratching your surfaces

[Cuts through] [Eliminates] Bathroom Surface Grime♦

Cuts through the toughest grime

Deep down clean!

Don't just mask odors - [eliminate][neutralize] them

Easiest way to keep your house clean every day

Easy [and convenient] way to [touch-up] [clean] your [home] [kitchen] [bathroom] [office] every day

Easy way to touch-up clean [your bathroom every day]

Effective daily cleaner

Effectively cleans everyday messes

Eliminates [removes] odors

Everything you need [to clean] is already in the wipe

Fast [and easy cleaning]

For a powerful clean

For everyday [use] [messes]

For [light] [touch-up] daily [quick cleaning] [clean-ups] [in one easy step]

For your toughest kitchen [and/or bathroom] messes

Freshens [as you clean]

Freshens your [home] [kitchen] [bathroom] [office]

Gets rid of [eliminates] odors

Gets up stuck-on messes [so you don't have to get on hands and knees]

Grease♦ -cutting ♦formula [power]

Great for cleaning around the toilet

Great for [grease♦ -cutting♦] [on-the-go cleaner] [touch-up cleaning]

### ***THE INFORMATION IN THIS BOX IS NOT PART OF THE LABELING***

Statements in brackets [ ] are optional or instructional. Statements in italics are instructional. The terms "wipe(s)", "towel(s)", "towelette(s)" and "cloth(s)" can be used interchangeably throughout except for the product primary brand name which can be only changed by notification or amendment. The word "and" and symbol "&" can be used interchangeably. Capitalization may be used interchangeably. Plurals or singular, bold and italics are all variable unless specified in 40 CFR. Graphics, symbols, and logos may vary in color. Pictures of use sites/surfaces and dispensing directions, are simply descriptive and may be interchanged for other similar images. All use surfaces and/or use sites on the label may be used in conjunction with an image of the use surface and/or use site.

April 1, 2022

[Great] for traveling [for use at work] [for use in public restrooms] [for use on hard, nonporous, nonfood contact surfaces] [for floor[s]] [touch-ups] [for touch-up cleaning]

[Great] for [use *or* cleaning [or touch-up cleaning] on hard, nonporous surfaces:  
 [At work/the office] [Clean-ups all over the house] [Every day *or* daily] [In public restrooms]  
 [Light cleaning *or* daily touch-ups [quick cleaning] [on floors] [on household surfaces indoors and out[doors]]  
 [On public telephones] [Playgrounds] [Recreational areas] [Throughout the house] [while traveling]

Handles daily clean-ups [with no need for additional sprays, sponges or buckets]

Heavy duty cleaner [or cleaning] [cloth]

Heavy [or light] [duty] [jobs]

[Helps] [eliminate(s)] [neutralize(s)] odors with a fresh [clean] scent

Helps you finish [cleaning] fast [quickly]

Ideal [great] for many cleaning jobs in the kitchen [and the bathroom]

[Improves labor results by] effectively controlling-malodors

Just [pull] [pop] [clean] wipe and toss

Large enough for all your tough [messes] [jobs] [big jobs]

Large enough to clean [tough] [messes] [jobs] with just one wipe

Leaves your bathroom fresh and clean in [just] minutes

Makes [your job] [cleaning] [easier] [easy]

Makes your job easier in the kitchen/bathroom

Multi [-] [action] [clean]

[Multi-purpose] kitchen bathroom [everyday] [daily] [touch-up] [cleaning] cleaner

Odor [elimination] [neutralization] [neutralizing]

[One wipe is] all you need to clean [tough] [messes] [and] [jobs]

Our most powerful cleaning formula ever

Perfect for cleaning up [around the toilet]

Perfect for [tough] [harsh] [cleaning] jobs [or messes] [that require] [extra] [more] [additional] [power] [scrubbing]

Pop and [clean] [go]

Power [or Extra power] [for] [tough] cleaning messes

Powerful cleaner for kitchen and bath

Powerful Scrubbing Power

Powers through [tough messes] [the dirt] [the grime] [grease♦] and [helps] [eliminate(s)] [neutralize(s)] odors

Powers through [the toughest] [grease] [grime] [and messes] [and eliminates] [odors on contact]

Pre-moistened with a special cleaning formula [to handle daily clean-ups without bottles, sponges, or buckets] [*product name are*]

Quick and Easy Cleaning

Quick easy [clean-ups]

[Quickly] eliminates [lingering] [food] odors on surfaces

Removes allergen matter<sup>a</sup>

Removes and cleans: [*insert soils. See page 8*]

Removes non-food allergens<sup>a</sup>

Removes [or Helps remove] scuffs [and spills] [tough stains]

Removes the grime [to give you more time] [so you can have more time]

Removes [the toughest] [grease] [grime] [and messes] [and eliminates] [odors] [on contact]

Specially formulated to clean [a variety of surfaces] [throughout] [all over] [around] the house [kitchen and bathroom]

[Specially formulated] use daily [to clean bathroom soils such as soap, soap scum♦ toothpaste, hair spray, hair gel, cosmetics, shaving cream, hand and body lotion]

[Spot clean[ing]] [touch-up clean[ing]] with a [fresh] [pleasant] [nice] [good] [great] [strong] [relaxing] [pleasing] [warm] [orange] [lemon] [lavender] smell *or* scent

Surface Fresh

[Textured cloth] gets up stubborn stuck-on messes

Textured [cloths] [towelettes] clean floors faster [and easier]

**THE INFORMATION IN THIS BOX IS NOT PART OF THE LABELING**

Statements in brackets [ ] are optional or instructional. Statements in italics are instructional. The terms “wipe(s)”, “towel(s)”, “towelette(s)” and “cloth(s)” can be used interchangeably throughout except for the product primary brand name which can be only changed by notification or amendment. The word “and” and symbol “&” can be used interchangeably. Capitalization may be used interchangeably. Plurals or singular, bold and italics are all variable unless specified in 40 CFR. Graphics, symbols, and logos may vary in color. Pictures of use sites/surfaces and dispensing directions, are simply descriptive and may be interchanged for other similar images. All use surfaces and/or use sites on the label may be used in conjunction with an image of the use surface and/or use site.

April 1, 2022

Textured for better [cleaning] [scrubbing] power  
Textured [scrubby] [rough [side]] [scrubbing fibers] for [scrubbing] [cleaning] [removing] [wiping] [tough] [stains] [soils] [messes]  
Textured surface[s] [gently] scrub[s] while [you mop] [or mopping]  
Textured/smooth wipes [or Combination Textured/smooth wipes]  
Textured [wipe] [cloth] [towelette] [for tough jobs] [for scrubbing power]  
The convenient way to keep your home looking “just cleaned”  
To Clean and Deodorize  
Touch-ups  
Tough enough to do the bigger cleaning jobs.  
Tough on [messes] [and] [odor] [and] [soap scum♦] [;] [gentle on hands]  
[Tough[er]] [Thick[er]] wipe(s) for tough[er] [cleaning] [messes] [jobs]  
Use [daily] to clean bathroom [messes] like [soap] [soap scum♦] [toothpaste] [hair spray] [hair gel]  
[Use the product or the wipes] for [light] touch-up [every day] [daily] [quick cleaning] [clean-ups] [all over the house] [anytime] [anywhere]  
Wipes [or Brand Name wipes] [are] [large] [big enough] for all your cleaning needs [or messes] [including] [floors]  
Wipe away [Wipes out] [tough] [odors] [messes] [jobs] [stains] [grease] [grime] [and] [dirt]  
With [Extra] cleaning [or scrubbing] power

### **Formula Related Claims**

Floral Blossom Scent

Floral Scent

Fresh Air [Scent] [Scented]

Fresh Lavender Scent

Fresh Lemon Scent

Fresh Mountain Air Scent

Lavender Scent

Lemon [Scent][Scented]

Mint Scent

Mountain Spring Scent

Orange Breeze Scent

Rain Forest Fresh Scent

Scent of Lavender

Tropical Scent

Ultimate Orange Scent

[Fragrance] made with [plant] [botanical(s)] [extract(s)]

[Sparkling] [Refreshing] [Essential][Citrus] [Lemon] [Orange] [Zest] [Essence] [Blossom] [Scent]

Alcohol free *[use this claim only for product without alcohol in the formulation]*

Also available in [the] [lemon] [fresh] [kitchen] and [lavender] [varieties]

A Quaternary [ammonium chloride] solution impregnated in a wiping cloth

Assures proper dilution strength for product effectiveness

[Big] [Value] [Size] Canister Bleach-free [formula]

Contains [name of active ingredient], the [same] active ingredient used in [*Brand-name*<sup>®</sup> or <sup>™</sup>♦]

[Contains] the [same] active ingredient[s]<sup>††</sup> [as][used in][*Insert Brand-name*<sup>®</sup> or <sup>™</sup>†††]

Contains no alcohol for alcohol-sensitive [equipment] [and] [surfaces] *[use this claim only for product without alcohol in the formulation]*

[Does not contain] [free of:] [chlorine] [bleach][(-)] [free]

Fast drying; leaves no dull or sticky residue

### **THE INFORMATION IN THIS BOX IS NOT PART OF THE LABELING**

Statements in brackets [ ] are optional or instructional. Statements in italics are instructional. The terms “wipe(s)”, “towel(s)”, “towelette(s)” and “cloth(s)” can be used interchangeably throughout except for the product primary brand name which can be only changed by notification or amendment. The word “and” and symbol “&” can be used interchangeably. Capitalization may be used interchangeably. Plurals or singular, bold and italics are all variable unless specified in 40 CFR. Graphics, symbols, and logos may vary in color. Pictures of use sites/surfaces and dispensing directions, are simply descriptive and may be interchanged for other similar images. All use surfaces and/or use sites on the label may be used in conjunction with an image of the use surface and/or use site.

April 1, 2022

For use on [equipment] [and] [surfaces] sensitive to alcohol *[use this claim only for product without alcohol in the formulation]*

[Fresh] [pleasant] [nice] [good] [great] [strong] [relaxing] [pleasing] [warm] [orange] [lemon] [lavender] [fresh air] smell [or scent]

Fresh Air [Scent] [Scented] [Wipes]

Has [leaves] a clean *and/or* light fresh [lemon] [rain] [floral] [lavender] [orange] [scent] [fragrance] [smell]

Has [leaves] a [fresh] [pleasant] [nice] [good] [great] [strong] [relaxing] [pleasing] [warm] [long lasting] [orange] [lemon] [lavender] scent [aroma] [bouquet] [odor] [perfume]

Leaves [behind] [light] [long-lasting] [a shine every time] [clean] fresh [citrus] [floral] [orange] [[scent][every time you wipe]]

Lemon [Scent][Scented][Scrubbing][Wipes]

Low-streak [-residue] [formula] [for] [is great on] [glass] [mirrors] [dark countertops] [stainless steel]

No mixing [*and/or* spraying] [*and/or* fuss] [*and/or* need to rinse]

No [mixing] [spraying] [mess] [fuss] [no muss]

Non-woven, disposable [cloth][towelette[s]] [wipe[s]], pre-saturated with a quaternary disinfectant cleaner.

[This product *or product name*] are [is a]

Phosphate free

Pre-measured

Quick drying

This product contains no [phosphates] [phosphorous] [compounds]

[With a] [fresh] [clean] [citrus] [lemon] fragrance

With a pleasant fragrance

### **Packaging Related Claims**

\_\_\_ % more wipes [ vs. \_\_\_ count canister]

\_\_\_ ct Pouch [or packs]

Also available in the \_\_\_ count size

Also available in [the] \_\_\_ count value [size] and the \_\_\_ count to-go size[s]

Bonus [Economy] [Great] [super] [mega] [trial] [value] [refill] [Size] [Pack]

Bonus - [*number to be inserted*] [free] towels

Bracket inside [Free bracket inside] [Easy to use] [easy to attach] bracket [holds] [stores] wipes [and keeps them ready to use] Refill [or use] bracket [or holder] [only] with {brand} wipes

[Bracket] makes wipes easy to dispense [with one hand] [Attach [bracket] to wall [or cabinet] [and/or backsplash]]

[Bracket] saves counter space

[Break *or* Separate] seal and remove.

[Can] [easily] slip [fit] into a [purse] [pocket] [backpack] [glove compartment *or* box] [car] [minivan] [SUV] [lunch box *or* bag\*\*\*] [briefcase] [luggage] [suitcase]

Club [Pack] [Box]

Container [tub]

Convenient [*or* Easy *or* Simple] [way] to Store [Packaging]

Convenient, quick and easy cleaning all around your [home] [business] [office] [workplace]

Convenient [size] [*or* Packaging]

Decorative, [stay moist] package

Designed with the planet in mind [*use only with soft pak (reduced plastic) packaging*]

Designer [decorator] [holiday] [seasonal] series [Decorative Pack] [Designer Pak]

Dispenses [one wipe at a time]

Double *or* super value [size] [pack]

[Easy] [convenient] [dispensing] lid [closure] [cap] [package]

Easy drop-in refill[s]

### **THE INFORMATION IN THIS BOX IS NOT PART OF THE LABELING**

Statements in brackets [ ] are optional or instructional. Statements in italics are instructional. The terms "wipe(s)", "towel(s)", "towelette(s)" and "cloth(s)" can be used interchangeably throughout except for the product primary brand name which can be only changed by notification or amendment. The word "and" and symbol "&" can be used interchangeably. Capitalization may be used interchangeably. Plurals or singular, bold and italics are all variable unless specified in 40 CFR. Graphics, symbols, and logos may vary in color. Pictures of use sites/surfaces and dispensing directions, are simply descriptive and may be interchanged for other similar images. All use surfaces and/or use sites on the label may be used in conjunction with an image of the use surface and/or use site.

April 1, 2022

Easy flip-top lid  
 [[Easy] one-handed [use] [dispensing]] [dispense [wipes] [with [only] [just] one hand] [grab [wipes] [a wipe] [and wipe] with [just] [only] one hand] [easily] grab [wipes] one at a time]  
 Easy [or Easier] [One or 1] [Hand or handed] dispensing [lid]  
 Easy or EZ start lid [cap]  
 Easy [or Easier or Accessible] [way] to store [packaging or package]  
 Easy [or Easier or Simple] [Storage] [and] [Dispensing]  
 Easy [or Easier or Simple] [way] [to] carry around [or lug around] [the] [your] [house] [home]  
 Easy [or Easier or Simple] [way] to [Store] [and] [Dispense][than similar count bulky canisters]  
 Easy [or Easier] [to] [start or start-off or open] [and] dispense  
 Easy pop [top]  
 Easy pop-up [tub]  
 Easy start lid [package]  
 Easy to carry [around the house]  
 Easy to open [thread]  
 Easy- to- store [Eco-Pak][pack][packaging]  
 Easy [easier] to use [easy to refill]  
 Easy-to-use package [canister] keeps [your] wipes moist  
 Eco-conscious packaging [*use claim only with soft pak (reduced plastic) packaging*]  
 [Economical] Refills available  
 [Economical] Refill[s] [one] [1] [two] [2] [three] [3] [four] [4] [*various numbers*] -pack  
 Economy [size]  
 Eco-Pack  
 Eco-Pack\* [or Eco-Pak\*] [the less plastic alternative] [to bulky canisters] [packaging or soft packaging] [with extra-large wipes]  
 [Eco] [Soft] [Packs] [Paks]  
 [Eco-Pack][Soft Packs][Eco Soft Packs]  
 Fits [almost anywhere] [easily] [conveniently] in drawers  
 Fits Grime Boss® [Basics] [and] [Swiffer®] leading brand Sweepers [Swiffer® is a registered trademark of The Proctor & Gamble Company]  
 Grasp Wipe & Pull Wipe Free [!]  
 Hold Pack & Pull Wipe Free [!]  
 Hydro-Loc™ [or Proprietary Hydro-Loc™] [Lid] [system] [helps lock in moisture] [[*and/or* helps keep lid open so it's easier to pull out *and/or* use wipes] [with one hand]  
 Includes \_\_\_ count refill [pack] [contains] \_\_\_ wipes  
 Includes [or Bonus] [On-the-Go] Travel Pack [or Pak]‡  
 [It's] the easiest [easier] [easy] way to grab a wipe  
 [X%] less [reduced] [plastic] [packaging] than [similar count] [bulky] [canisters]  
 [Makes] [wipes] [as] easy to grab [as they are to use]  
 Moisture lock lid  
 [Multi [-refill] pack]  
 Next wipe pops up automatically [every time] [!]  
 No bottles, no sponges, no mess  
 No canister needed  
 No-hassle lid [cap]  
 No threading [required]  
 One [wipe] at a time dispensing  
 [Package][*insert type of package*] made from [x%] recycled materials  
 Perfect for carrying in the [Purse], [Car], [Diaper Bag]  
 Pop-up [-cap] [top]  
 Pop-up dispensing

**THE INFORMATION IN THIS BOX IS NOT PART OF THE LABELING**

Statements in brackets [ ] are optional or instructional. Statements in italics are instructional. The terms "wipe(s)", "towel(s)", "towelette(s)" and "cloth(s)" can be used interchangeably throughout except for the product primary brand name which can be only changed by notification or amendment. The word "and" and symbol "&" can be used interchangeably. Capitalization may be used interchangeably. Plurals or singular, bold and italics are all variable unless specified in 40 CFR. Graphics, symbols, and logos may vary in color. Pictures of use sites/surfaces and dispensing directions, are simply descriptive and may be interchanged for other similar images. All use surfaces and/or use sites on the label may be used in conjunction with an image of the use surface and/or use site.

April 1, 2022

[Pop-up] [First] [Wipe]  
Portable [pack] [size] [can be reattached] [with bracket]  
[Pre-started] [First] [Wipe] [for easy *or easier*] dispensing]  
Pull [back] [here]  
Pull n' go [pack]  
Pull-N-Wipe lid [cap]  
[Put(s)] wipes [where you need *or use them*] [*or want them*] [within [easy] [arm's] reach [*or at your fingertips*]]  
Ready pull  
Recyclable [package]  
Reduces [packaging] waste [by x%] [when compared to regular canister *or bucket or pail*]  
[Refill] package contains [one] [1] [two] [2] [three] [3] [four] [4] [various numbers] [wet] [pre-moistened] [wipe(s)] [refill(s)]  
[roll(s)]  
Refill [size] [value] [pack]  
Refillable [with \_\_\_# wipes] [dispenser] refill [pack] [for dispenser]  
Resealable pouch [package] [container]  
Resealable [stay-moist] pouch [inside]  
Reuse your [empty] canisters [again [and again]] [!]  
[Significantly] [x%] less plastic than canisters  
Soft [flexible *or collapsible*] packaging that's easier to store  
Starter pack [X wet mopping cloths]  
Super size  
Takes up [X%] less space than [similar count] [bulky] canisters  
This [outer] [selling][package] [container][canister] contains x% post consumer [material][plastic][resin]  
To Go!! [To Go] [purse] [travel] [pocket] size [pouch] [pak]  
[Travel] [portable] [pack]  
Travel [size] [pack]  
Trial [size] [pack] [paper towel] size [\_\_\_" x \_\_\_"]  
Tub refill  
Tub with pop-up action  
Twin pack  
Uses [X] [%] [percent] less plastic than [previous] [similar count] canisters  
[Use to] refill[s] [count] [wipe] canisters *or* tubs  
[Value Pack] [Value size] [Value twin]  
[X%] more wipes [free] [[vs. {count} wipe [canister] [package]]  
X% [more] [wipes] [free] [vs. Z count] [canisters] [packs]  
X% reduction in packaging [material]

### **Towelette Related Claims**

*[Note to Reviewer: the following include non pesticidal, cleaning claims referring to the towelette size. The general "extra large wipe" language was previously approved; adding specific details] [Standard wipes [Xin x Xin] [X x Xin]*

2 sides -- 1 for scrubbing, 1 for wiping  
\_\_\_% bigger [quilted] wipes] [ vs. X x Y in]  
[Absorbs] [Absorbent] [wipe]  
Built-in [tough] scrubbing fibers help clean away tough stains [like soap scum♦] [and] [baked on [grease♦] [and] [messes]]  
Cloth  
[Cloth-like texture] [Textured] [strong] [for] [with] scrubbing power  
Cloth[s] [wipes] quickly remove dirt, spots and smudges  
[Double] [dual] [two] -sided scrubbing wipes  
Double-sided scrubbing wipes

### **THE INFORMATION IN THIS BOX IS NOT PART OF THE LABELING**

Statements in brackets [ ] are optional or instructional. Statements in italics are instructional. The terms "wipe(s)", "towel(s)", "towelette(s)" and "cloth(s)" can be used interchangeably throughout except for the product primary brand name which can be only changed by notification or amendment. The word "and" and symbol "&" can be used interchangeably. Capitalization may be used interchangeably. Plurals or singular, bold and italics are all variable unless specified in 40 CFR. Graphics, symbols, and logos may vary in color. Pictures of use sites/surfaces and dispensing directions, are simply descriptive and may be interchanged for other similar images. All use surfaces and/or use sites on the label may be used in conjunction with an image of the use surface and/or use site.

April 1, 2022

Each pre-moistened, disposable wipe has a scrubbing side for [tough stains] [tough jobs] [like] soap scum♦ and grease♦ and a softer side for wiping away everyday messes.

Extra large ψ wipe[s] [“Y” x “Z”] [compared to] [versus] [our] [standard] [Xin x Xin] [X x Xin] [X x X”] [wipes][size]

Extra-large ψ wipe[s][for extra cleaning]

Extra-large ψ wipe[s] [so you can [do] [clean] [X%] [more] [with it] [them] [than] [regular size wipes]

Extra-large ψ wipe[s] [clean] [more] [surface] [area[s]] [than] [our] [regular] [standard] [Xin x Xin] [X x Xin] [X x X”] [size] [wipe[s]]

Extra-large ψ wipe[s] are [X%] bigger than standard wipes, so you use fewer

[X%] larger wipe ψ [so you use fewer sheets] [for] [more] [extra] [cleaning]

[X%] larger wipe ψ [to clean] [more] [larger] [area[s]] [cleaned]

More wipe ψ, more surface cleaned

Clean larger area[s] with[X%] larger wipe ψ

Fiber is made from Wood Pulp [derived from trees grown in environmentally managed forests]

Improved scrubbing fibers

Large enough to use with [or use on or fit] [Swiffer®] [Grime Boss®] Floor Sweepers

Large [size] [actual size of wipes] [textured] [wipes] [disinfecting cloths]

Large, thick and quilted [cloth] for everyday cleaning

Made with [Tencel®] [ Veocel™]

Made with [x%] [Tencel®] [Veocel™] [fiber]

Made with [Tencel®] [ Veocel™] the [ultra-soft] [soft] [strong] [sustainable] [durable] [renewable] [100% renewable] [resource] fiber<sup>v</sup>

More absorbent [to clean up spills]

Non-abrasive

Non[-]Linting

Non-scratch[ing] clean[ing] of showers and tubs, shower doors and curtains, fixtures and exterior toilet bowl surfaces

Non-scratching [wipe]

No [pinched fingers] [rips] [tears]

One [or 1] side is [like a scrubbing sponge, the other is like a wipe] [textured for [cleaning] [tough] [messes] [debris] [the other is smooth for wiping]]

[Picks up] [cleans] [Traps] [particles] [dust] [dirt] [hair][and] [&] [crumbs]

Plant based [wipes] with [X%] [X times] [cleaning] [scrubbing] power

[Plastic free] [X%] [plant based] [wipes] [fibers]

{Product variety} contains [X%] Tencel® [fibers]

Quilted [wipe] [pre-sprayed towels]

Regular [wipe] [size] or large [wipe] [size]

[Strong] [absorbent] [durable] [thick] [extra-large] [larger] [tough] [wipe]

[Strong] [durable enough] for [tough] [messes] [jobs] [stains] [all around the house]

Strong, Real Cloth Wipes

Strong wipe[s] for tougher [jobs] [messes]

Sustainable Fiber

Textured [cleaning] cloths with all-over scrubbing [power][fibers]

The wipe that is [strong] [durable] [thick] [heavy] enough to scrub [and] [clean]

Towel

Traps & locks away [dirt] [grease♦] [messes] [crumbs] [hair] [lint] [dust] [greasy♦ messes]

Wipe [material] made from [x] % [sustainable] [ingredients] [fibers] *[May be used only when cellulose wipe material used]*

Wipes [X%] [made] [derived] from [X%] recycled [post consumer] plastic [water] bottles

[Wipe[s]] [material] [X%] [made] [derived] from trees grown [using] [in] [sustainable] [renewable] [managed] [forests] [forestry] [farming] [practices]

Wipe[s] [material] made from [x] % [sustainable] [and] [renewable] [wood pulp] [plant-based] [ingredients] [fibers]

Wipe[s] [material] made from trees grown using [sustainable] [renewable] [managed forestry] [farming] [practices]

[Wow] scrubs like a sponge

#### **THE INFORMATION IN THIS BOX IS NOT PART OF THE LABELING**

Statements in brackets [ ] are optional or instructional. Statements in italics are instructional. The terms “wipe(s)”, “towel(s)”, “towelette(s)” and “cloth(s)” can be used interchangeably throughout except for the product primary brand name which can be only changed by notification or amendment. The word “and” and symbol “&” can be used interchangeably. Capitalization may be used interchangeably. Plurals or singular, bold and italics are all variable unless specified in 40 CFR. Graphics, symbols, and logos may vary in color. Pictures of use sites/surfaces and dispensing directions, are simply descriptive and may be interchanged for other similar images. All use surfaces and/or use sites on the label may be used in conjunction with an image of the use surface and/or use site.

April 1, 2022



X" x Y"

[X%] stronger wipe than [standard] [Xin x Xin] [X x Xin] [X x X"] [disinfecting] wipe  
[#X] [X%] [X times] stronger! [cleaning power▼]

**Other Product Related Claims**

[number to be inserted] [Textured] [household] [surface] wipes

[X] [orange] [lemon] [lavender] [fresh air] [smell] [scent]

X [total] wipes

[number to be inserted] towels for the price of [price to be inserted]

[number to be inserted] towels free!

2-Go

[X-in-1][wipe][towelette]

After use, just toss wipe[s] away

Aids in reducing [or in the reduction of] cross-contamination between treated surfaces

[Also] [Great] [Made] [Works] [well] [Appropriate] [on] [for] [stainless steel] [glass] [exterior surfaces]  
[stovetops] [microwaves] [dark glazed tile] cooktop(s)

[Also] Try [our other] [Grime Boss®] [Nice 'n Clean®] [alternate brand name] [Heavy Duty] [glass] [and other] [product[s]]  
[wipes]

Always ready to use

Attach [‘em] [them] [wipes] where you need [use] [‘em] [them] [most]

Available at [fill in company name]

Bathroom: countertops, sinks, glazed tiled walls, hampers, doorknobs, tubs, showers, basins, cabinets, faucets

Before using on an unknown surface, test in an inconspicuous spot

[Best] Value[!]

By Grime Boss® (tag line)

Can help reduce cross-contamination between hard, nonporous, nonfood contact treated surfaces [in][at] [the] [kitchen]  
[school] [classroom] [bathroom] [restroom] [household] [office] [work]

Can help reduce cross-contamination between treated surfaces

Contains [number] canisters [plus] [and] [number] refills

[Contains] the same wipes [you love] [easy to grab]

Disposable

Do not use on natural marble, windows, unpainted wood, brass, clear plastic or colored grout.

Dual [action] [purpose] [scrubs] [wipes]

Eliminates potential for overspray

[Extra] convenient

Fits [Grime Boss®] [Basics] and [Swiffer®] [leading brand] sweepers

[This product is not manufactured or distributed by The Proctor & Gamble Company, owner of the registered  
trademark Swiffer®]

Flushable [Flushing] [Towelettes] [Wipes] [Towels] [Not recommended in motor homes or with basement pump systems]

[Never Flush More than 1 wipe at a time] [Will Not [Won't] Harm Well-Maintained Sewers and Septic[s] [Systems]]

For [fill in company name]

For finished sealed wood, vinyl and glazed tile hard, nonporous floors

For finished wood, vinyl and tile floors [and other hard, nonporous, nonfood contact surfaces]

For hard, nonporous[, nonfood contact surfaces] [floors]

For hard, nonporous, nonfood contact household surfaces [all around the house] indoor and outdoor

For [professional] [pro] [commercial] [contractor] [industrial] use

Formulated to aid in the reduction of cross-contamination on treated surfaces in the home, schools, institutions and  
industry

For use [at home], [away from home], [in public places] [on-the-go\*]

For use in critical care areas [where reduction of cross-contamination between treated hard, nonporous surfaces is of  
prime importance]

**THE INFORMATION IN THIS BOX IS NOT PART OF THE LABELING**

Statements in brackets [ ] are optional or instructional. Statements in italics are instructional. The terms "wipe(s)", "towel(s)", "towelette(s)" and "cloth(s)" can be used interchangeably throughout except for the product primary brand name which can be only changed by notification or amendment. The word "and" and symbol "&" can be used interchangeably. Capitalization may be used interchangeably. Plurals or singular, bold and italics are all variable unless specified in 40 CFR. Graphics, symbols, and logos may vary in color. Pictures of use sites/surfaces and dispensing directions, are simply descriptive and may be interchanged for other similar images. All use surfaces and/or use sites on the label may be used in conjunction with an image of the use surface and/or use site.

April 1, 2022

[For] [use] [in] kitchen[s], [and] [baths] [bathrooms] [floors] [and all around the house]  
[Good] [Great] [for] [can] [use][gentle][on] [*Insert use sites from page 10-13*] [the] school[s] [or] [classroom(s)]  
Great for use on hard, nonporous surfaces in your kitchen, bathroom, and [throughout] [all over] [all around] the house  
Great [value] [price per wipe]  
Grime Boss® is a registered trademark of Nice-Pak Products, Inc.  
Guaranteed quality every day  
Helps reduce cross-contamination between treated hard, nonporous, nonfood contact [household] surfaces  
Household surface wipes  
Ideal for high-touch surfaces  
[*Insert product or trade name*] is a registered trademark of [*Insert company name*]  
[Jumbo] [Super] size wipes  
Just wipe and throw away. [It's that easy.]  
Kitchen Fresh  
Lower price per wipe  
Made in a 0% landfill facility  
Moist household [cleaning] wipes  
Moist Wipes  
More wipes for the same price  
No more need to get on your hands and knees to [scrub] [clean] stubborn spots  
No sponges, no rags, no buckets, no mess  
Not for individual sale  
Not for sale in [*insert name of state(s)*]  
Not for sale [or use] after [*insert date*]  
Not for use on unfinished floors [or on carpet]  
[Our promise] [Quality & Satisfaction] [100% Guaranteed or your money back]  
Oversized wipes  
Peel [back] [here] [for additional labeling]  
Perfect for use in [or on] [airports], [airplane trays], [trains], [public areas], [airplane bathrooms], [hotel rooms],  
[offices] [play areas] [restaurants]  
Perfect size for kitchens [*and/or* bathrooms]  
Pre-moistened [Towelettes]  
[Proudly] [Made in [USA] [US] [America] [with domestic and imported materials] [*insert country*]]  
[Ready] [Easy] [EZ] [First] [Wipe] [Start]  
Ready to use, [the product] [the wipes] are [always]  
Sample  
Sample [Sampling] Pack: This pack is used for sampling or product demonstration purposes only. Not for individual sale.  
Satisfaction Guaranteed [or your money back]  
Saves [steps][time]  
Scrub-N-Wipe[s]  
Scrubs like no other [wipe]  
Specially formulated for a variety of hard, nonporous, nonfood contact surfaces [*or* kitchen surfaces]  
[Specially formulated] for [daily] use [in *or* on] [to clean kitchen soils] [messes] such as grease♦, grime, crumbs,  
fingerprints  
[Specially formulated] for [use in] the bathroom  
Solimo and all related logos are trademarks of Amazon.com, Inc. or its affiliates  
The uniquely designed cap with recessed reservoir enables you to keep every wipe its freshest...even the  
leftovers from your last pull  
There are many uses for [*product name*] and here are a few: [Bathroom surfaces] [Kitchen surfaces] [Kid's *or* child's  
[play] room] [family den] [Window blinds]  
These [wipes] [towelettes] [cloths] will not harm [most] surfaces  
The wipe to use when you don't have much time

**THE INFORMATION IN THIS BOX IS NOT PART OF THE LABELING**

Statements in brackets [ ] are optional or instructional. Statements in italics are instructional. The terms "wipe(s)", "towel(s)", "towelette(s)" and "cloth(s)" can be used interchangeably throughout except for the product primary brand name which can be only changed by notification or amendment. The word "and" and symbol "&" can be used interchangeably. Capitalization may be used interchangeably. Plurals or singular, bold and italics are all variable unless specified in 40 CFR. Graphics, symbols, and logos may vary in color. Pictures of use sites/surfaces and dispensing directions, are simply descriptive and may be interchanged for other similar images. All use surfaces and/or use sites on the label may be used in conjunction with an image of the use surface and/or use site.

April 1, 2022

[This product] is [also] great on- the- “go” in *[add use sites]*  
TIME TO KICK THE CANister [with] *[Insert alternate brand name]*  
Triple action  
[Trusted by] [used by] [designed for] [professionals] [contractors] [pros]  
Try me  
Use by *[insert date]*  
Use every day in every room [throughout the house]  
Use everywhere *or* anywhere on exterior, hard, nonporous, nonfood contact inanimate surfaces  
Use [in] [on] [public toilet seats] [Laundromats] [camp sites] [cleaning pet areas] [hotels] [motels] [lodging] [grocery]  
[carts and baskets]  
Use on hard, nonporous, nonfood contact surfaces anywhere [you travel] [throughout the house]  
Use on hard, nonporous, nonfood contact surfaces only: [stainless steel] [Formica®] [glass] [glass tables] [glazed tile]  
[Test wipe on small inconspicuous area first.]  
Use on hard, nonporous kitchen and bathroom floors  
Use [the product] [the wipe[s]] throughout the house  
Virtually [Lint-Free] [clean] [shine]  
Wet [floor] [mopping] cloths with power (*tag line*)  
Wet wipes [\_\_\_" x \_\_\_"]  
Will not leave grit *or* soap scum  
Will not [scratch] [damage] [harm] [scuff] [most] [hard nonporous] surfaces [listed on the label]  
Wipe down shopping [grocery] cart handles and child seats  
Works [great] on [shiny] [high-gloss] [high-shine] surfaces [like stainless]

**THE INFORMATION IN THIS BOX IS NOT PART OF THE LABELING**

Statements in brackets [ ] are optional or instructional. Statements in italics are instructional. The terms “wipe(s)”, “towel(s)”, “towelette(s)” and “cloth(s)” can be used interchangeably throughout except for the product primary brand name which can be only changed by notification or amendment. The word “and” and symbol “&” can be used interchangeably. Capitalization may be used interchangeably. Plurals or singular, bold and italics are all variable unless specified in 40 CFR. Graphics, symbols, and logos may vary in color. Pictures of use sites/surfaces and dispensing directions, are simply descriptive and may be interchanged for other similar images. All use surfaces and/or use sites on the label may be used in conjunction with an image of the use surface and/or use site.

April 1, 2022

## **FOOTNOTES**

<sup>Φ</sup> Kills SARS-CoV-2 on hard, nonporous surfaces [in 3 minutes]

<sup>¥</sup> Kills SARS-CoV-2 [Coronavirus] [the virus that causes COVID-19] [in 3 minutes] on hard, nonporous surfaces

<sup>^</sup> *Staphylococcus aureus*

<sup>Σ</sup> *Salmonella enterica*

<sup>P</sup> *Escherichia coli (E.coli) O157:H7*

<sup>π</sup> *Streptococcus pyogenes*

<sup>α</sup> *Listeria monocytogenes*

<sup>υ</sup> Methicillin-Resistant *Staphylococcus aureus*

<sup>1</sup> All “germ” claims must be linked to bacteria (minimum: *Salmonella* and *Staph*) and at least one virus with a footnote or symbol. For example: Front panel: “Effective against household germs<sup>1</sup>” Back panel: “<sup>1</sup> Kills *Salmonella enterica*, *Staphylococcus aureus*, *Herpes Simplex Type 2*, and *Influenza A H3N2 virus*.” Bacteria and viruses may be listed separately if desired.

<sup>2</sup> When disinfection directions for use are followed

<sup>3</sup> Nonfood contact surfaces only

<sup>4</sup> When disinfection and sanitization directions for use are followed

<sup>5</sup> Follow sanitization directions]

<sup>6</sup> [(For Feline Calicivirus & Rhinovirus Type 1A, treated surfaces must remain visibly wet for 5 Minutes)]

[<sup>†</sup> Mark indicates to use with HIV/HBV/HCV Directions for Use.]]

<sup>▲</sup> A pre-cleaning step is required for HIV-1, HBV and HCV [and] [or] use on ultrasound transducers [or probes].

*(If HIV-1, HBV or HCV or ultrasound transducers are not listed on the label, any of the one-step cleaning/disinfecting claims may be used without the phrase requiring pre-cleaning.*

*If one-step cleaner claims used and HIV-1/HBV/ HCV claims and/or directions for ultrasound transducers are included on the label, then this statement must also be included on the same panel of the label)*

<sup>Ψ</sup> [versus [our] [standard] [Xin x Xin] [X x Xin] [X x X”] wipe[s]]

<sup>††</sup> Contains [*insert name of active ingredient(s)*]

<sup>†††</sup> This product is not manufactured or distributed by [*Insert company name* ® or ™]

<sup>‡</sup> Hard, nonporous, nonfood contact surfaces only

<sup>◊</sup> This product is not manufactured or distributed by \_\_\_\_\_ ® or ™

[(\* uses X[%] [percent] less plastic than [previous] [similar count] canisters)]

(<sup>∇</sup> Fiber is made from wood pulp derived from trees grown in environmentally managed forests)

<sup>♯</sup> pet dander, dust mite matter and pollen

<sup>◆</sup> [*Grease and soap scum claims are not to be used on labeling with one-step cleaning/disinfection claims.*]

[\*\*Effective against *Escherichia coli (E. coli)*, *Salmonella enterica (Salmonella)*, *Staphylococcus aureus (Staph)*, [and] *Pseudomonas aeruginosa.*]

[(<sup>∇</sup> Compared to a wet paper towel)] [(<sup>∇</sup> Than a wet paper towel)]

\*\*\*A thorough rinse with potable water after use is required for surfaces in direct contact with food. Food contact surfaces are not cleared for sanitization.

<sup>€</sup> Allow surface to reach room temperature before treatment

## **THE INFORMATION IN THIS BOX IS NOT PART OF THE LABELING**

Statements in brackets [ ] are optional or instructional. Statements in italics are instructional. The terms “wipe(s)”, “towel(s)”, “towelette(s)” and “cloth(s)” can be used interchangeably throughout except for the product primary brand name which can be only changed by notification or amendment. The word “and” and symbol “&” can be used interchangeably. Capitalization may be used interchangeably. Plurals or singular, bold and italics are all variable unless specified in 40 CFR. Graphics, symbols, and logos may vary in color. Pictures of use sites/surfaces and dispensing directions, are simply descriptive and may be interchanged for other similar images. All use surfaces and/or use sites on the label may be used in conjunction with an image of the use surface and/or use site.

April 1, 2022

[Note: The following claims can be used only for 6 months]

[Better] [New] [Improved] [Stronger] [Thicker] Wipe [!]  
[Now][Better] [new] [&] [improved] [dispensing] [lid] [closure] [cap] [package] [dispensing] [better {than before}]  
Cleans better than [before] [ever]  
Extra Convenient  
[Improved] [better] [cleaning] [wipes] [with] [criss-cross] [ridges]  
[Improved] [more] [better] [cleaning] [power] [performance]  
Introducing  
More towels  
More Wipes [count]  
New Eco-Pak [Package] [Packaging] [Benefits]  
[New] [thick] [textured] [wipe] [tougher] [thicker] wipe for tougher cleaning  
New [and Improved] [Look]  
[New] [Now] [Low-streak] [-residue] [formula] [Wipe] [Delivers] [A] Clean you can [see]  
[New] Easy [Start Lid] [Start Package] [Convenient] [Eco-Pak] [Package] [Packaging] [to store packaging]  
New larger [bigger]-sized wipe  
New larger size [New] [now] [even] stronger [wipe[s]] [a] [better wipe[s]]  
New, [number] [% larger towels than before] [use this for 6 months after converting to larger towel]  
New [package] [packaging] same great wipe  
[New] [Package] [packaging] uses [x%] less material (plastic ) [than] [when compared to] [regular] containers [or  
canisters]  
New top  
Now available [Now] [In] [a] [Decorative Pack] [Designer Pak]  
[Now] \_\_\_% stronger  
[Now] 2x [2.5x] [3x] [4x] [5x] stronger  
Now cleaning is [faster] [easier] than [ever] [before]  
[Now] cleans better on grease♦  
[Now] Dispenses easier [than ever][!]  
[Now] [even] [more durable] [stronger] [softer] [wipes] [than] [before] [ever]  
Now in [insert number] scent(s), [insert scent(s)]  
[Now] [number of wipes] [even] [more] wipes  
[Now] [Reinforced] [With] Quilted [strength]  
[Now] [with] [criss-cross] [raised] [ridges] [V-shaped] [pattern] [for] [better] [improved] [cleaning] [performance] [power]  
  
Now with [number to be inserted] extra towels  
[Now with] quilted wipe  
[Now] [x times] the [grease♦][]-♦ cleaning power  
Same Fast Powerful Cleaning  
Sani-Cloth® [wipe[s]][disinfectant] [brand] [has] [have] a new look!  
[Scrubs] (& [cleans] [better than ever]  
[Stronger] more durable [wipe]  
Thick[er] [wipe] [with] cloth-like texture  
[Wipes] stay[s] wet [moist] longer  
X% [Bigger] [larger] [quilted] wipes  
[x%] more grease♦ [cleaning] [cutting] power  
[x%] thicker wipes

**THE INFORMATION IN THIS BOX IS NOT PART OF THE LABELING**

Statements in brackets [ ] are optional or instructional. Statements in italics are instructional. The terms “wipe(s)”, “towel(s)”, “towelette(s)” and “cloth(s)” can be used interchangeably throughout except for the product primary brand name which can be only changed by notification or amendment. The word “and” and symbol “&” can be used interchangeably. Capitalization may be used interchangeably. Plurals or singular, bold and italics are all variable unless specified in 40 CFR. Graphics, symbols, and logos may vary in color. Pictures of use sites/surfaces and dispensing directions, are simply descriptive and may be interchanged for other similar images. All use surfaces and/or use sites on the label may be used in conjunction with an image of the use surface and/or use site.

April 1, 2022

## GRAPHICS

[The following graphics and statements are optional. Statements may also appear in a graphic]

[They may be placed anywhere on label/container.]

[They are used to show examples of places the product can be used.]



**NOT FOR USE ON SKIN**

**NOT FOR CLEANING OR SANITIZING SKIN**

**NOT A BABY WIPE**

**FOR USE ON HARD, NONPOROUS, NONFOOD CONTACT SURFACES ONLY**

**DO NOT FLUSH**



Not a Skin Wipe. For Use on Hard, Nonporous,  
Nonfood Contact Surfaces Only.



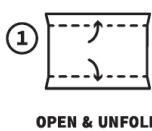
Not a Skin Wipe. For Use on Hard, Nonporous,  
Nonfood Contact Surfaces Only.

### **THE INFORMATION IN THIS BOX IS NOT PART OF THE LABELING**

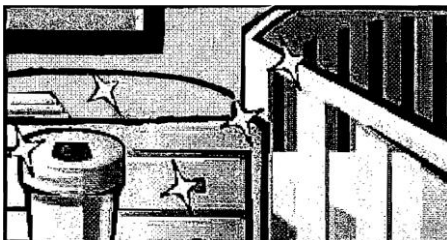
Statements in brackets [ ] are optional or instructional. Statements in italics are instructional. The terms "wipe(s)", "towel(s)", "towelette(s)" and "cloth(s)" can be used interchangeably throughout except for the product primary brand name which can be only changed by notification or amendment. The word "and" and symbol "&" can be used interchangeably. Capitalization may be used interchangeably. Plurals or singular, bold and italics are all variable unless specified in 40 CFR. Graphics, symbols, and logos may vary in color. Pictures of use sites/surfaces and dispensing directions, are simply descriptive and may be interchanged for other similar images. All use surfaces and/or use sites on the label may be used in conjunction with an image of the use surface and/or use site.

April 1, 2022

• USE OF WIPE DISPENSER



[Graphic above to be used only when “glazed tile” is listed on label use sites.]



**THE INFORMATION IN THIS BOX IS NOT PART OF THE LABELING**

Statements in brackets [ ] are optional or instructional. Statements in italics are instructional. The terms “wipe(s)”, “towel(s)”, “towelette(s)” and “cloth(s)” can be used interchangeably throughout except for the product primary brand name which can be only changed by notification or amendment. The word “and” and symbol “&” can be used interchangeably. Capitalization may be used interchangeably. Plurals or singular, bold and italics are all variable unless specified in 40 CFR. Graphics, symbols, and logos may vary in color. Pictures of use sites/surfaces and dispensing directions, are simply descriptive and may be interchanged for other similar images. All use surfaces and/or use sites on the label may be used in conjunction with an image of the use surface and/or use site.

April 1, 2022



D= Disinfecting



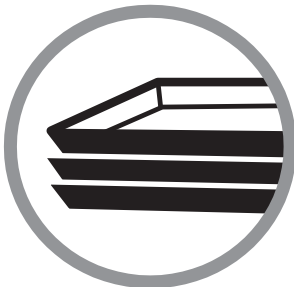
Counter Tops\*\*\*



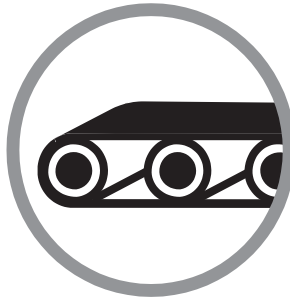
Counters \*\*\*



[Refrigeration][,][Appliances][/] Freezer[s] [Units] \*\*\* €



Cafeteria Trays\*\*\*, OR  
[Hospital Meal Trays\*\*\*,] OR  
[Airline Tray Tables\*\*\*,] OR  
[Pill Trays\*\*\*]



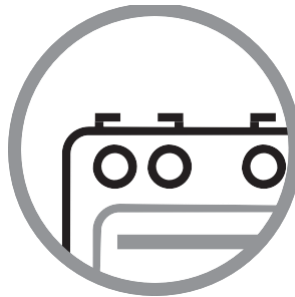
Conveyor Belt



Food Carts \*\*\*



Chairs/Tables\*\*\*



Stoves\*\*\* €



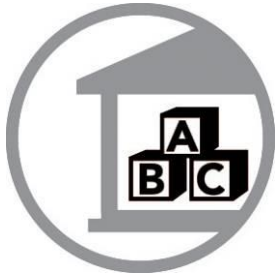
Airplanes/Airports

**THE INFORMATION IN THIS BOX IS NOT PART OF THE LABELING**

Statements in brackets [ ] are optional or instructional. Statements in italics are instructional. The terms “wipe(s)”, “towel(s)”, “towelette(s)” and “cloth(s)” can be used interchangeably throughout except for the product primary brand name which can be only changed by notification or amendment. The word “and” and symbol “&” can be used interchangeably. Capitalization may be used interchangeably. Plurals or singular, bold and italics are all variable unless specified in 40 CFR. Graphics, symbols, and logos may vary in color. Pictures of use sites/surfaces and dispensing directions, are simply descriptive and may be interchanged for other similar images. All use surfaces and/or use sites on the label may be used in conjunction with an image of the use surface and/or use site.

April 1, 2022





Daycare Settings



Hotels/Motels



Cruise Ships



Nurseries



Nursing homes



Schools



Grocery [Carts]\*\*\*



Casinos



Healthcare



Convenience Stores \*\*\*



Digital Devices



Cell Phones



Laptops & Phones

**THE INFORMATION IN THIS BOX IS NOT PART OF THE LABELING**

Statements in brackets [ ] are optional or instructional. Statements in italics are instructional. The terms "wipe(s)", "towel(s)", "towelette(s)" and "cloth(s)" can be used interchangeably throughout except for the product primary brand name which can be only changed by notification or amendment. The word "and" and symbol "&" can be used interchangeably. Capitalization may be used interchangeably. Plurals or singular, bold and italics are all variable unless specified in 40 CFR. Graphics, symbols, and logos may vary in color. Pictures of use sites/surfaces and dispensing directions, are simply descriptive and may be interchanged for other similar images. All use surfaces and/or use sites on the label may be used in conjunction with an image of the use surface and/or use site.

April 1, 2022



ATM / Payment Processing



Exhaust Fans/Hoods<sup>6</sup>



Trash Cans



Back of House Surfaces\*\*\*



Smallwares\*\*\*



Microwave\*\*\*\*



Scales\*\*\*



Door Handles



Sinks/Faucets



Sinks/Faucets



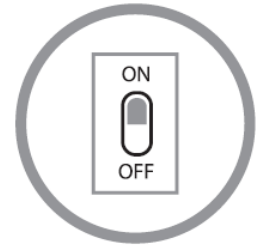
Restrooms



Restroom Counters/  
Vanities



Restroom Counters/  
Vanities



Light Switches



Changing Tables



Mirrors



Exterior Surfaces  
of Toilets



Food Prep Surfaces\*\*\*

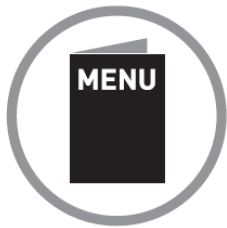


Bar Surfaces\*\*\*

**THE INFORMATION IN THIS BOX IS NOT PART OF THE LABELING**

Statements in brackets [ ] are optional or instructional. Statements in italics are instructional. The terms "wipe(s)", "towel(s)", "towelette(s)" and "cloth(s)" can be used interchangeably throughout except for the product primary brand name which can be only changed by notification or amendment. The word "and" and symbol "&" can be used interchangeably. Capitalization may be used interchangeably. Plurals or singular, bold and italics are all variable unless specified in 40 CFR. Graphics, symbols, and logos may vary in color. Pictures of use sites/surfaces and dispensing directions, are simply descriptive and may be interchanged for other similar images. All use surfaces and/or use sites on the label may be used in conjunction with an image of the use surface and/or use site.

April 1, 2022



Laminated Menus



Tables & Chairs\*\*\*



Tables\*\*\*



Booster Seats



Condiment Dispensers\*\*\*



Exterior Surfaces of Ice Makers\*\*\*<sup>c</sup>



Exterior Surfaces of Beverage Dispensers\*\*\*



Delivery Vehicle Surfaces



Hot Delivery Bags\*\*\*<sup>c</sup>



Cold Delivery Coolers\*\*\*<sup>c</sup>



Cash Registers



Phones & Cash Registers



Light Switches, Door Handles and Sinks



Soap Dispensers



Hand Dryers



Oven Knobs/Handles<sup>c</sup>



Server/Hostess Stations



Fitness



**THE INFORMATION IN THIS BOX IS NOT PART OF THE LABELING**

Statements in brackets [ ] are optional or instructional. Statements in italics are instructional. The terms "wipe(s)", "towel(s)", "towelette(s)" and "cloth(s)" can be used interchangeably throughout except for the product primary brand name which can be only changed by notification or amendment. The word "and" and symbol "&" can be used interchangeably. Capitalization may be used interchangeably. Plurals or singular, bold and italics are all variable unless specified in 40 CFR. Graphics, symbols, and logos may vary in color. Pictures of use sites/surfaces and dispensing directions, are simply descriptive and may be interchanged for other similar images. All use surfaces and/or use sites on the label may be used in conjunction with an image of the use surface and/or use site.

April 1, 2022

The following are company logos for use on PDI product labels. The purpose of the logo is for easy recognition of PDI products in the marketplace.]



[The graphics below will be used as bullets with EPA approved optional claims]



Distributed by Staples®

The Staples® brand 100% Satisfaction Guarantee  
If you're not 100% happy with this Staples® brand product, just return it anytime. It's that easy.

[Graphics]



[Graphics]



[Graphics]



TENCEL®



TENCEL®



TENCEL®  
THE NEW AGE FIBER

[Cloth] [Towel] [Towelette] [Wipe][Made with] Tencel®[Tencel® is a registered trademark of Lenzing AG.]



**THE INFORMATION IN THIS BOX IS NOT PART OF THE LABELING**

Statements in brackets [ ] are optional or instructional. Statements in italics are instructional. The terms "wipe(s)", "towel(s)", "towelette(s)" and "cloth(s)" can be used interchangeably throughout except for the product primary brand name which can be only changed by notification or amendment. The word "and" and symbol "&" can be used interchangeably. Capitalization may be used interchangeably. Plurals or singular, bold and italics are all variable unless specified in 40 CFR. Graphics, symbols, and logos may vary in color. Pictures of use sites/surfaces and dispensing directions, are simply descriptive and may be interchanged for other similar images. All use surfaces and/or use sites on the label may be used in conjunction with an image of the use surface and/or use site.

April 1, 2022

Every Kirkland Signature™ product is guaranteed to meet or exceed the quality standards of the leading national brands. If you're not completely satisfied, your money will be refunded.

TOTAL HOME®

It's where performance and value live.

TOTAL HOME®

Offers a wide selection of household products that work hard and save your money.



**THE INFORMATION IN THIS BOX IS NOT PART OF THE LABELING**

Statements in brackets [ ] are optional or instructional. Statements in italics are instructional. The terms "wipe(s)", "towel(s)", "towelette(s)" and "cloth(s)" can be used interchangeably throughout except for the product primary brand name which can be only changed by notification or amendment. The word "and" and symbol "&" can be used interchangeably. Capitalization may be used interchangeably. Plurals or singular, bold and italics are all variable unless specified in 40 CFR. Graphics, symbols, and logos may vary in color. Pictures of use sites/surfaces and dispensing directions, are simply descriptive and may be interchanged for other similar images. All use surfaces and/or use sites on the label may be used in conjunction with an image of the use surface and/or use site.

April 1, 2022

**KILLS COLD & FLU VIRUSES\***

✓ E.COLI<sup>P</sup> ✓ SALMONELLA<sup>Σ</sup> ✓ STAPH<sup>Δ</sup>  
✓ STREP<sup>T</sup> ✓ MRSA<sup>U</sup> ✓ LISTERIA<sup>α</sup>



**ECO SOFT PACK**



**ecopak**



LEARN MORE AT  
[BerkleyJensen.com](http://BerkleyJensen.com)

Every Berkley Jensen product comes with our **100% Money-Back Guarantee**. It's just one of the many ways a BJ's membership gives you MORE.



**THE INFORMATION IN THIS BOX IS NOT PART OF THE LABELING**

Statements in brackets [ ] are optional or instructional. Statements in italics are instructional. The terms "wipe(s)", "towel(s)", "towelette(s)" and "cloth(s)" can be used interchangeably throughout except for the product primary brand name which can be only changed by notification or amendment. The word "and" and symbol "&" can be used interchangeably. Capitalization may be used interchangeably. Plurals or singular, bold and italics are all variable unless specified in 40 CFR. Graphics, symbols, and logos may vary in color. Pictures of use sites/surfaces and dispensing directions, are simply descriptive and may be interchanged for other similar images. All use surfaces and/or use sites on the label may be used in conjunction with an image of the use surface and/or use site.

April 1, 2022



Purely for you

**SOLMO**

**SOLMO**

*Simple to shop. Easy to love.*

**SMART VALUES™**



**Great Value**



Purely for you

**THE INFORMATION IN THIS BOX IS NOT PART OF THE LABELING**

Statements in brackets [ ] are optional or instructional. Statements in italics are instructional. The terms "wipe(s)", "towel(s)", "towelette(s)" and "cloth(s)" can be used interchangeably throughout except for the product primary brand name which can be only changed by notification or amendment. The word "and" and symbol "&" can be used interchangeably. Capitalization may be used interchangeably. Plurals or singular, bold and italics are all variable unless specified in 40 CFR. Graphics, symbols, and logos may vary in color. Pictures of use sites/surfaces and dispensing directions, are simply descriptive and may be interchanged for other similar images. All use surfaces and/or use sites on the label may be used in conjunction with an image of the use surface and/or use site.

April 1, 2022



**THE INFORMATION IN THIS BOX IS NOT PART OF THE LABELING**

Statements in brackets [ ] are optional or instructional. Statements in italics are instructional. The terms "wipe(s)", "towel(s)", "towelette(s)" and "cloth(s)" can be used interchangeably throughout except for the product primary brand name which can be only changed by notification or amendment. The word "and" and symbol "&" can be used interchangeably. Capitalization may be used interchangeably. Plurals or singular, bold and italics are all variable unless specified in 40 CFR. Graphics, symbols, and logos may vary in color. Pictures of use sites/surfaces and dispensing directions, are simply descriptive and may be interchanged for other similar images. All use surfaces and/or use sites on the label may be used in conjunction with an image of the use surface and/or use site.

April 1, 2022





**THE INFORMATION IN THIS BOX IS NOT PART OF THE LABELING**

Statements in brackets [ ] are optional or instructional. Statements in italics are instructional. The terms "wipe(s)", "towel(s)", "towelette(s)" and "cloth(s)" can be used interchangeably throughout except for the product primary brand name which can be only changed by notification or amendment. The word "and" and symbol "&" can be used interchangeably. Capitalization may be used interchangeably. Plurals or singular, bold and italics are all variable unless specified in 40 CFR. Graphics, symbols, and logos may vary in color. Pictures of use sites/surfaces and dispensing directions, are simply descriptive and may be interchanged for other similar images. All use surfaces and/or use sites on the label may be used in conjunction with an image of the use surface and/or use site.

April 1, 2022



Virucidal\*  
in 5 minutes

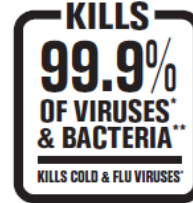


\*effective against Rhinovirus  
and Norovirus in 5 min

**THE INFORMATION IN THIS BOX IS NOT PART OF THE LABELING**

Statements in brackets [ ] are optional or instructional. Statements in italics are instructional. The terms "wipe(s)", "towel(s)", "towelette(s)" and "cloth(s)" can be used interchangeably throughout except for the product primary brand name which can be only changed by notification or amendment. The word "and" and symbol "&" can be used interchangeably. Capitalization may be used interchangeably. Plurals or singular, bold and italics are all variable unless specified in 40 CFR. Graphics, symbols, and logos may vary in color. Pictures of use sites/surfaces and dispensing directions, are simply descriptive and may be interchanged for other similar images. All use surfaces and/or use sites on the label may be used in conjunction with an image of the use surface and/or use site.

April 1, 2022



(Note: Full name of organism must be listed on label)



**THE INFORMATION IN THIS BOX IS NOT PART OF THE LABELING**

Statements in brackets [ ] are optional or instructional. Statements in italics are instructional. The terms "wipe(s)", "towel(s)", "towelette(s)" and "cloth(s)" can be used interchangeably throughout except for the product primary brand name which can be only changed by notification or amendment. The word "and" and symbol "&" can be used interchangeably. Capitalization may be used interchangeably. Plurals or singular, bold and italics are all variable unless specified in 40 CFR. Graphics, symbols, and logos may vary in color. Pictures of use sites/surfaces and dispensing directions, are simply descriptive and may be interchanged for other similar images. All use surfaces and/or use sites on the label may be used in conjunction with an image of the use surface and/or use site.

April 1, 2022



**KITCHEN SINKS & COUNTERS\*\*\***



**SHOWER STALLS**



**BATHROOM SURFACES**



**FINISHED FLOORS**



school bus



airplane



**TRAVEL SURFACES**



cruise ship



casino



shopping cart



**CARTS & BASKETS**



push cart



convenience store



table tray



conveyor belt



hotel/motel



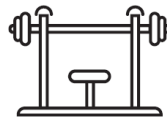
nursing home



fitness



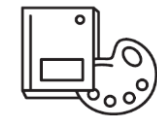
fitness



**GYM EQUIPMENT**



daycare



**SCHOOL SURFACES**



nursery



showers



**BATHTUB**



**TRAIN**



**CAR TRAVEL**



**LIGHT SWITCH**



faucets

**THE INFORMATION IN THIS BOX IS NOT PART OF THE LABELING**

Statements in brackets [ ] are optional or instructional. Statements in italics are instructional. The terms "wipe(s)", "towel(s)", "towelette(s)" and "cloth(s)" can be used interchangeably throughout except for the product primary brand name which can be only changed by notification or amendment. The word "and" and symbol "&" can be used interchangeably. Capitalization may be used interchangeably. Plurals or singular, bold and italics are all variable unless specified in 40 CFR. Graphics, symbols, and logos may vary in color. Pictures of use sites/surfaces and dispensing directions, are simply descriptive and may be interchanged for other similar images. All use surfaces and/or use sites on the label may be used in conjunction with an image of the use surface and/or use site.

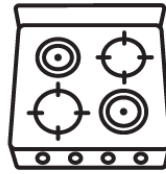
April 1, 2022



**SINK & FAUCET**



stove<sup>€</sup>



**STOVETOP<sup>€</sup>**



table & chairs



**REFRIGERATOR<sup>€</sup>**



fridge/freezer<sup>€</sup>



lawn furniture



door handles



desktop



**OFFICE**



keyboard & mouse



computer/tablet/phone



**TABLET & LAPTOP**



**REMOTE**



exterior surfaces of  
toilet/toilet seats



**EXTERIOR SURFACES OF  
TOILET/TOILET SEATS**



**FOOD CART\*\*\***



**COUNTERTOP\*\*\***



school imagery



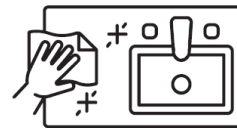
school imagery



school imagery



school notebook



**CLEAN SURFACES**

**THE INFORMATION IN THIS BOX IS NOT PART OF THE LABELING**

Statements in brackets [ ] are optional or instructional. Statements in italics are instructional. The terms “wipe(s)”, “towel(s)”, “towelette(s)” and “cloth(s)” can be used interchangeably throughout except for the product primary brand name which can be only changed by notification or amendment. The word “and” and symbol “&” can be used interchangeably. Capitalization may be used interchangeably. Plurals or singular, bold and italics are all variable unless specified in 40 CFR. Graphics, symbols, and logos may vary in color. Pictures of use sites/surfaces and dispensing directions, are simply descriptive and may be interchanged for other similar images. All use surfaces and/or use sites on the label may be used in conjunction with an image of the use surface and/or use site.

April 1, 2022



ONE-STEP CLEANING,  
DISINFECTING & DEODORIZING

KITCHENS BATHROOMS OFFICES  
CHANGING TABLES DORMS GYMS

EASY TO STORE PACK • FITS EVERYWHERE!

STASHABLE STACKABLE PORTABLE

BATHROOMS

CHANGING TABLES

DORMS

DRAWERS

GLOVE BOX

CABINETS

KITCHENS

AUTOMOBILES

LAPTOPS

HOTELS

PHONES

**THE INFORMATION IN THIS BOX IS NOT PART OF THE LABELING**

Statements in brackets [ ] are optional or instructional. Statements in italics are instructional. The terms “wipe(s)”, “towel(s)”, “towelette(s)” and “cloth(s)” can be used interchangeably throughout except for the product primary brand name which can be only changed by notification or amendment. The word “and” and symbol “&” can be used interchangeably. Capitalization may be used interchangeably. Plurals or singular, bold and italics are all variable unless specified in 40 CFR. Graphics, symbols, and logos may vary in color. Pictures of use sites/surfaces and dispensing directions, are simply descriptive and may be interchanged for other similar images. All use surfaces and/or use sites on the label may be used in conjunction with an image of the use surface and/or use site.

April 1, 2022

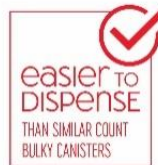


PLASTIC FREE • 100% PLANT BASED FIBERS



Made in the USA of domestic and imported materials

MADE IN USA WITH DOMESTIC AND IMPORTED MATERIALS



**THE INFORMATION IN THIS BOX IS NOT PART OF THE LABELING**

Statements in brackets [ ] are optional or instructional. Statements in italics are instructional. The terms "wipe(s)", "towel(s)", "towelette(s)" and "cloth(s)" can be used interchangeably throughout except for the product primary brand name which can be only changed by notification or amendment. The word "and" and symbol "&" can be used interchangeably. Capitalization may be used interchangeably. Plurals or singular, bold and italics are all variable unless specified in 40 CFR. Graphics, symbols, and logos may vary in color. Pictures of use sites/surfaces and dispensing directions, are simply descriptive and may be interchanged for other similar images. All use surfaces and/or use sites on the label may be used in conjunction with an image of the use surface and/or use site.

April 1, 2022