



UNITED STATES ENVIRONMENTAL PROTECTION AGENCY  
WASHINGTON, DC 20460

OFFICE OF CHEMICAL SAFETY  
AND POLLUTION PREVENTION

November 14, 2018

Melissa Louis-Juste  
Sr. Regulatory Affairs Associate  
Professional Disposables International, Inc. (PDI)  
Two Nice-Pac Park  
Orangeburg, NY 10962

Subject: Label Amendment – To update label language  
Product Name: Sani-Cloth Germicidal Disposable Cloth  
EPA Registration Number: 9480-5  
Application Date: May 24, 2018  
Decision Number: 545505

Dear Ms. Louis-Juste:

The amended label referred to above, submitted in connection with registration under the Federal Insecticide, Fungicide and Rodenticide Act, as amended, is acceptable. This approval does not affect any conditions that were previously imposed on this registration. You continue to be subject to existing conditions on your registration and any deadlines connected with them.

A stamped copy of your labeling is enclosed for your records. This labeling supersedes all previously accepted labeling. You must submit one copy of the final printed labeling before you release the product for shipment with the new labeling. In accordance with 40 CFR 152.130(c), you may distribute or sell this product under the previously approved labeling for 18 months from the date of this letter. After 18 months, you may only distribute or sell this product if it bears this new revised labeling or subsequently approved labeling. "To distribute or sell" is defined under FIFRA section 2(gg) and its implementing regulation at 40 CFR 152.3.

Should you wish to add/retain a reference to the company's website on your label, then please be aware that the website becomes labeling under the Federal Insecticide Fungicide and Rodenticide Act and is subject to review by the Agency. If the website is false or misleading, the product would be misbranded and unlawful to sell or distribute under FIFRA section 12(a)(1)(E). 40 CFR 156.10(a)(5) list examples of statements EPA may consider false or misleading. In addition, regardless of whether a website is referenced on your product's label, claims made on the website may not substantially differ from those claims approved through the registration process. Therefore, should the Agency find or if it is brought to our attention that a website contains false or misleading statements or claims substantially differing from the EPA approved registration, the website will be referred to the EPA's Office of Enforcement and Compliance.

Your release for shipment of the product constitutes acceptance of these conditions. If these conditions are not complied with, the registration will be subject to cancellation in accordance with FIFRA section 6. If you have any questions, please contact Emilia Oiguenblik by phone at

Page 2 of 2  
EPA Reg. No. 9480-5  
Decision No. 545505

703 347 0199, or via email at [Oiguenblik.emilia@epa.gov](mailto:Oiguenblik.emilia@epa.gov) or Eric Miederhoff by phone at 703 347 8028, or via email at [Miederhoff.eric@epa.gov](mailto:Miederhoff.eric@epa.gov).

Sincerely,



Eric Miederhoff  
Product Manager 31  
Regulatory Management Branch I  
Antimicrobials Division (7510P)  
Office of Pesticide Programs

Enclosure: Stamped label

11/14/2018

Under the Federal Insecticide, Fungicide  
and Rodenticide Act as amended, for the  
pesticide registered under  
EPA Reg. No. 9480-5

## SANI-CLOTH® GERMICIDAL DISPOSABLE CLOTH

**[Previously approved Alternate Brand Names:]**

DISINFECTING FLOOR CLOTHS  
DISINFECTING MOPPING CLOTHS  
DISINFECTING WET FLOOR CLOTHS  
DISINFECTING WET MOPPING CLOTHS  
DISINFECTING WIPES  
DISINFECTING WIPES FRESH AIR SCENT  
DISINFECTING WIPES LEMON SCENT  
GRIME BOSS® BASICS DISINFECTING SCRUBBING WIPES  
GRIME BOSS® BASICS DISINFECTING WET MOPPING CLOTHS  
GRIME BOSS® BASICS DISINFECTING WIPES  
GRIME BOSS® DISINFECTING FLOOR WIPES  
GRIME BOSS® DISINFECTING SCRUBBING WIPES  
GRIME BOSS® DISINFECTING WET MOPPING CLOTHS  
GRIME BOSS® DISINFECTING WIPES  
GRIME BOSS® HOUSEHOLD SURFACE WIPES  
GRIME BOSS® DISINFECTING WET FLOOR CLOTHS  
GRIME BOSS® DISINFECTING WET FLOOR WIPES  
GRIME BOSS® DISINFECTING WET FLOOR SWEEPER REFILLS  
GRIME BOSS® SPORTS EQUIPMENT WIPES  
GRIME BOSS® EQUIPMENT WIPES  
GRIME BOSS® SPORTS EQUIPMENT DISINFECTING WIPES  
GRIME BOSS® EQUIPMENT DISINFECTING WIPES  
GRIME BOSS® DISINFECTING SPORTS EQUIPMENT WIPES  
GRIME BOSS® DISINFECTING EQUIPMENT WIPES  
KIRKLAND SIGNATURE™ DISINFECTING WET FLOOR CLOTHS  
KIRKLAND SIGNATURE™ DISINFECTING WET FLOOR WIPES  
KIRKLAND SIGNATURE™ DISINFECTING WET FLOOR SWEEPER REFILLS  
KIRKLAND SIGNATURE™ SPORTS EQUIPMENT WIPES  
KIRKLAND SIGNATURE™ EQUIPMENT WIPES  
KIRKLAND SIGNATURE™ SPORTS EQUIPMENT DISINFECTING WIPES  
KIRKLAND SIGNATURE™ EQUIPMENT DISINFECTING WIPES  
KIRKLAND SIGNATURE™ DISINFECTING SPORTS EQUIPMENT WIPES  
Kirkland Signature™ Disinfecting Wipes  
HDX™ DISINFECTING WET FLOOR CLOTHS  
HDX™ DISINFECTING WET FLOOR WIPES  
HDX™ DISINFECTING WET FLOOR SWEEPER REFILLS  
HDX™ ANTIBACTERIAL DISINFECTING WIPES<sup>1</sup>

SANI-CLOTH® AF GERMICIDAL DISPOSABLE WIPE[S]  
SANI-CLOTH® DISINFECTING WIPES  
SANI-CLOTH® HOUSEHOLD SURFACE WIPES  
SANI-PROFESSIONAL® [BRAND] BATHROOM DISINFECTING WIPE[S]  
SANI-PROFESSIONAL® [BRAND] DISINFECTING MULTI-SURFACE WIPE[S]  
SANI-PROFESSIONAL® [BRAND] SANI CART WIPE[S]  
SANI-PROFESSIONAL® [BRAND] SANI CLOTH DISINFECTING WIPE[S]  
SANI-PROFESSIONAL® [BRAND] SANI-SURFACE DISINFECTING WIPE[S]  
SANI-PROFESSIONAL® [BRAND] TABLE TURNERS DISINFECTING WIPES  
SANI-PROFESSIONAL® [BRAND] TABLE TURNERS SANITIZING WIPES  
SANI-SURFACE DISINFECTING FLOOR CLOTHS [WIPES]  
SANI-SURFACE DISINFECTING WET FLOOR CLOTHS [WIPES]  
SANI-SURFACE HOUSEHOLD DISINFECTING WIPES  
UP&UP® DISINFECTING WET FLOOR CLOTHS  
UP&UP® DISINFECTING WET FLOOR WIPES  
UP&UP® DISINFECTING WET FLOOR SWEEPER REFILLS  
UP&UP® SPORTS EQUIPMENT WIPES  
UP&UP® EQUIPMENT WIPES  
UP&UP® SPORTS EQUIPMENT DISINFECTING WIPES  
UP&UP® EQUIPMENT DISINFECTING WIPES  
UP&UP® DISINFECTING SPORTS EQUIPMENT WIPES  
UP&UP® DISINFECTING EQUIPMENT WIPES  
GREAT VALUE DISINFECTING WET FLOOR CLOTHS  
GREAT VALUE DISINFECTING WET FLOOR WIPES  
GREAT VALUE DISINFECTING WET FLOOR SWEEPER REFILLS  
GREAT VALUE SPORTS EQUIPMENT WIPES  
GREAT VALUE EQUIPMENT WIPES  
GREAT VALUE SPORTS EQUIPMENT DISINFECTING WIPES  
GREAT VALUE EQUIPMENT DISINFECTING WIPES  
GREAT VALUE DISINFECTING SPORTS EQUIPMENT WIPES  
GREAT VALUE DISINFECTING EQUIPMENT WIPES  
BERKLEY JENSEN® DISINFECTING WET FLOOR CLOTHS  
BERKLEY JENSEN® DISINFECTING WET FLOOR WIPES  
BERKLEY JENSEN® DISINFECTING WET FLOOR SWEEPER REFILLS  
BERKLEY JENSEN® SPORTS EQUIPMENT WIPES  
BERKLEY JENSEN® EQUIPMENT WIPES  
BERKLEY JENSEN® SPORTS EQUIPMENT DISINFECTING WIPES  
BERKLEY JENSEN® EQUIPMENT DISINFECTING WIPES  
BERKLEY JENSEN® DISINFECTING SPORTS EQUIPMENT WIPES  
BERKLEY JENSEN® DISINFECTING EQUIPMENT WIPES  
Staples Disinfecting Wipes<sub>1</sub>  
Staples Disinfecting Wipes<sub>2</sub>  
Total Home® Disinfecting Wipes<sub>2</sub>

**THE INFORMATION IN THIS BOX IS NOT PART OF THE LABELING**

Statements in brackets [ ] are optional or instructional. The terms "wipe(s)", "towel(s)", "towelette(s)" and "cloth(s)" can be used interchangeably throughout except for the product primary brand name which can be only changed by notification or amendment. The word "and" and symbol "&" can be used interchangeably.

ACTIVE INGREDIENTS

n-Alkyl (68% C<sub>12</sub>, 32% C<sub>14</sub>) dimethyl ethylbenzyl ammonium chlorides..... 0.14%

n-Alkyl (60% C<sub>14</sub>, 30% C<sub>16</sub>, 5% C<sub>12</sub>, 5% C<sub>18</sub>) dimethyl benzyl ammonium chlorides..... 0.14%

OTHER INGREDIENTS..... 99.72%

TOTAL ..... 100.00%

[Does not include the weight of the [cloth] [towelette] [or] [wipe]]

**KEEP OUT OF REACH OF CHILDREN [AND PETS]  
CAUTION**

See [back] [side] [container inside] [panel] for additional precautionary statements

[Contains:] NET CONTENTS [and/or [Net Wt.][Minimum Wt.]] \_\_\_\_\_ oz. (g) [or lbs. (kg)]  
\_\_\_\_[# OF CLOTHS] [SIZE of each cloth]

EPA Reg. No.: 9480-5

EPA Est. No.: 9480-NY-1

[or EPA Est. No. A=9480-NY-1, B=72956-WI-1, C=72956-AR-1 [Others may be added]

Alpha character will precede batch code on product]

[Manufactured by [or for]:]

Professional Disposables International, Inc.

Two Nice-Pak Park

Orangeburg, NY 10962-1376 [USA]

[For information call: [phone number to be inserted]]

[Made in] [USA][of][with] domestic and imported materials][insert country]

**THE INFORMATION IN THIS BOX IS NOT PART OF THE LABELING**

Statements in brackets [ ] are optional or instructional. The terms "wipe(s)", "towel(s)", "towelette(s)" and "cloth(s)" can be used interchangeably throughout except for the product primary brand name which can be only changed by notification or amendment. The word "and" and symbol "&" can be used interchangeably.

## PRECAUTIONARY STATEMENTS:

### Hazards to humans and domestic animals

CAUTION: Causes moderate eye irritation. Avoid contact with eyes and clothing. Wash hands thoroughly with soap and water after handling and before eating, drinking, chewing gum, using tobacco, or using toilet.

### FIRST AID

**If in eye:** Hold eye open and rinse slowly and gently with water for 15-20 minutes. Remove contact lenses, if present, after the first 5 minutes, then continue rinsing eye. Call a poison control center or doctor for treatment advice.

[For additional information in case of emergency call toll free [phone number to be inserted]].

Have the product container or label with you when calling a poison control center or doctor or going for treatment.

[Use one of the following as applicable to type of container:]

### [To Dispense TOWELETTES] [or WIPES] [or TOWELS] [or CLOTHS]:

Remove lid [.] [and discard inner seal] [from container or canister.] Find center of wipe roll, remove first wipe for use, twist corner of next wipe into a point and thread through the hole in the [container or] canister lid. Pull through about one inch. Replace lid. Dispense remaining wipes as necessary by pulling out at an angle. When not in use keep [center cap of] lid closed to prevent moisture loss.

Peel [back] for additional labeling.

Peel [back] label for additional information.

### TRAVEL PACK:

Peel back label slowly. Pull out wipes as needed and reseal label. Unfold wipe.

### PACKET/PACKAGE:

Tear open packet [package]. Unfold wipe.

### To Dispense [or To use] [SOLO® PAK] [or soft pack] [or Eco PAK] [or Eco Pack] [or product]:

Open package lid. [Completely remove inner seal.] Pull out wipe [at an angle] [towards you through orifice or opening]. [The next wipe pops up automatically.] Snap lid closed after use to retain moisture.

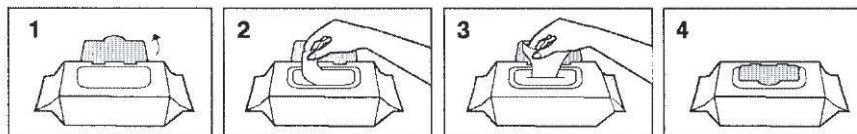
OR

**To Dispense [or To use] [SOLO® PAK] [or soft pack] [or Eco PAK] [or Eco Pack] [or product]:** Open package lid. Completely remove inner seal. Apply pressure around opening and pull wipe out [at an angle]. Snap lid closed after use to retain moisture.

OR

### To Dispense:

- Open package Lid.
- Completely remove inner seal.
- Apply pressure around opening and pull wipe out [at an angle].
- Snap lid closed after use to retain moisture.



DO NOT FLUSH • STORE AT ROOM TEMPERATURE  
DISPOSE OF USED WIPES IN TRASH RECEPTACLE • KEEP SOLO® LID CLOSED WHEN NOT IN USE  
SOLO® is a registered trademark of Nice-Pak Products, Inc.

### THE INFORMATION IN THIS BOX IS NOT PART OF THE LABELING

Statements in brackets [ ] are optional or instructional. The terms “wipe(s)”, “towel(s)”, “towelette(s)” and “cloth(s)” can be used interchangeably throughout except for the product primary brand name which can be only changed by notification or amendment. The word “and” and symbol “&” can be used interchangeably.

**REFILL PACKET [or PACKAGE] [or POUCH]:**

This refill package is made for use only in a [product name] container; do not use this product in a container for another product. Do not use the refill wipes in a container that is cracked or broken. Discard the cracked or broken container in accordance with the container disposal instructions on the label.

*[Option 1]*

Remove [entire] lid from container. Tear open refill [package] at [notch] [mark] [arrow] and place [wipe] roll in empty container. Follow information on container to dispense wipes.

*[Option 2]*

Remove [entire] lid from container. Tear open refill [package] at [notch] [mark] [arrow]. Place [entire] refill package of wipes in empty container. Follow information on container to dispense wipes.

**GENERIC:**

Open lid. Pull out wipe. Close lid tightly.

Bucket [or pail or container] [numbers optional]

Remove the lid from the [pail or bucket or container.]

Press open the dispenser at center of the lid.

[Open the refill pack.]

Locate the first wipe at the center of the roll.

Feed the first wipe through the dispensing orifice.

Reapply the lid to the [pail or bucket or container.]

Dispense the wipe.

- For the refills:
1. Remove the lid from the [pail or bucket or container.]
  2. Remove the empty refill pack material from the [pail or bucket or container.]
  3. Press open the dispenser at center of the lid.
  4. Open the refill pack.
  5. Locate the first wipe at the center of the roll.
  6. Feed the first wipe through the dispensing orifice.
  7. Reapply the lid to the pail.
  8. Dispense the wipe.

**FOR DISPENSING FLOOR WIPES:***[Option 1 – Tub]*

*(With pictures depicting use)*

1. Unfold the cloth
2. [Place the cloth so textured side touches the floor.] Line up long side of cloth with long side of sweeper
3. Wrap cloth around sweeper head so it is completely covered and push cloth into grippers

or

*[Option 2 – Re-sealable pouch dispensing]*

Open by pulling back on re-sealable label. Remove wet wipe, unfold and attach to sweeper. Reseal label on pouch to retain moisture.

or

*[Option 3 – Pouch with lid dispensing]*

Open container by pulling up on lid. [Remove and discard inner label.] Remove wet wipe, unfold and attach to sweeper. Close lid on package to retain moisture.

**DIRECTIONS FOR USE**

It is a violation of Federal law to use this product in a manner inconsistent with its labeling.

[See directions for use on the container inside]

[Use one or more of the following as appropriate; may be used in any order as long as entire paragraph is used]

**[TO CLEAN] [CLEANING] [AND] [DEODORIZING]:** Wipe surface [with towelette] until clean. Let air dry.

**THE INFORMATION IN THIS BOX IS NOT PART OF THE LABELING**

Statements in brackets [ ] are optional or instructional. The terms “wipe(s)”, “towel(s)”, “towelette(s)” and “cloth(s)” can be used interchangeably throughout except for the product primary brand name which can be only changed by notification or amendment. The word “and” and symbol “&” can be used interchangeably.

**Directions for cleaning floors:**

- [1] Unfold cloth.
- [2] Place cloth on floor
- [3] Wrap cloth around sweeper head and push cloth into grippers
- [4] Clean the floor. Dispose of dirty cloths in the trash. Do not flush.

**TO SANITIZE [AND DEODORIZE] HARD, NONPOROUS, NONFOOD CONTACT SURFACES:** Use a wipe to remove gross filth [or heavy soil]. Unfold a clean wipe and thoroughly wet surface. Treated surface must remain visibly wet for [a full] fifteen (15) seconds. Use additional wipe(s) if needed to assure continuous 15 second wet contact time. Let air dry. *[If label includes cleaning claims for grease, soap scum, grime, dirt, messes, soil, add the following as the first sentence (before "Use a wipe to remove..."): A pre-cleaning step is required for [grease], [soap scum], [grime], [dirt], [messes] [soil].]*

**TO DISINFECT [AND DEODORIZE] HARD, NONPOROUS SURFACES:** Use a wipe to remove gross filth [or heavy soil]. Unfold a clean wipe and thoroughly wet surface. Treated surface must remain visibly wet for [a full] three (3) minutes. Use additional wipe(s) if needed to assure continuous 3 minute wet contact time. A thorough rinse with potable water is required for surfaces in direct contact with food. *[If label includes cleaning claims for grease, soap scum, grime, dirt, messes, soil, add the following as the first sentence (before "Use a wipe to remove..."): A pre-cleaning step is required for [grease], [soap scum], [grime], [dirt], [messes] [soil].]*

**TO [SANITIZE] OR [DISINFECT] HARD, NONPOROUS FLOORS:** If floor is heavily soiled, sweep, vacuum or mop before [disinfecting] or [sanitizing].

- [To disinfect: wipe floor ensuring that surface remains visibly wet for 3 minutes]
- or*
- [To sanitize: wipe floor ensuring that surface remains visibly wet for 15 seconds]

Change wipe if it becomes heavily soiled. Use more than one wipe as needed to keep floor wet for specified contact time. Allow to air dry. Do not allow anyone to walk on floor surface until completely dry.

One [ \_ x \_ inch ( \_ cm x \_ cm)] wipe will cover approximately [ \_ sq. ft. ( \_ sq. meters)] *[Note: coverage area listed on label will change proportionately with wipe surface area].* To be effective, floor must remain wet for full contact time.

*[The following headings are optional; choose as appropriate:]*

[Hospital Use] [Nursing Homes] [Doctors' Offices] [Hospices] [Healthcare Settings]

**ULTRASOUND TRANSDUCERS:** For use on external surfaces of Ultrasound Transducers only

To disinfect: Pre-clean ultrasound gel from external transducer to be disinfected by using a clean wash cloth. Then thoroughly wet the probe with a towelette. Treated surface must remain visibly wet for [a full] three (3) minutes. Use additional wipe[s] if needed to assure continuous 3 minute wet contact time. Let air dry.

*[The following instructions are to be included on production labels when claims against HIV, and/or HBV and/or HCV are listed; one, two or all three of the viruses may be included on claims and directions in production labels.]*

<sup>†</sup>KILLS HIV-1 (AIDS VIRUS), HEPATITIS B VIRUS (HBV) AND HEPATITIS C VIRUS (HCV) ON PRE-CLEANED ENVIRONMENTAL SURFACES/OBJECTS [AND PRE-CLEANED EXTERNAL SURFACES OF ULTRASOUND TRANSDUCERS [PROBES]] PREVIOUSLY SOILED WITH BLOOD/BODY FLUIDS in three (3) minutes at room temperature (68°- 77°F) or (20°- 25°C) in healthcare or other settings in which there is an expected likelihood of soiling of inanimate surfaces/objects with blood or body fluids, and in which the surfaces/objects likely to be soiled with blood or body fluids can be associated with the potential for transmission of Human Immunodeficiency Virus Type 1 (HIV -1) (associated with AIDS), Hepatitis B Virus (HBV) and Hepatitis C Virus (HCV).

<sup>†</sup>SPECIAL INSTRUCTIONS FOR CLEANING AND DECONTAMINATION AGAINST HIV-1, HEPATITIS B VIRUS AND HEPATITIS C VIRUS OF SURFACES/OBJECTS SOILED WITH BLOOD/BODY FLUIDS

**Personal protection:** When using this product, wear disposable protective gloves, protective gowns, face masks, and eye coverings [per facility protocol] when handling HIV-1 (AIDS Virus), HBV or HCV infected blood or body fluids.

**Cleaning procedure:** All blood and other body fluids must be thoroughly cleaned from surfaces and objects before

**THE INFORMATION IN THIS BOX IS NOT PART OF THE LABELING**

Statements in brackets [ ] are optional or instructional. The terms "wipe(s)", "towel(s)", "towelette(s)" and "cloth(s)" can be used interchangeably throughout except for the product primary brand name which can be only changed by notification or amendment. The word "and" and symbol "&" can be used interchangeably.



disinfection by the germicidal cloth. Open, and unfold first germicidal cloth to remove gross filth [or heavy soil].

**Disposal of infectious materials:** Dispose of used towelette in accordance with local regulations for infectious waste disposal.

**Contact time:** Use second germicidal cloth to thoroughly wet surface. Allow to remain wet three (3) minutes, let air dry. Although efficacy at a 30 second contact time has been shown to be adequate against HIV-1 (AIDS VIRUS), this time is not sufficient for the other non-HIV organisms listed on this label. Therefore, a 3 minute wet contact time must be used for all listed non-HIV organisms.

*[Use storage/disposal statement A if canister, tub, bucket, pail or refill dispenser directions used. Use storage/disposal statement B if travel pack, Solo® Pak, soft pack, pouch, or [refill or [bulk]] packet/package] directions used.]*

## STORAGE AND DISPOSAL

Do not contaminate water, food, or feed by storage and disposal. *[Statement not required for residential or household use products.]*

*[Statement A:]*

**Storage:** Do not store near heat or open flame. When not in use keep [center cap of] lid closed to prevent moisture loss. **Towelette Disposal:** Do not reuse towelette. [Dispose of] [or Discard] used towelette in trash. Do not flush in toilet. **Dispenser [or Container] [or Package] Disposal:** Nonrefillable container. Do not reuse or refill this container. Offer for recycling. If recycling is not available, put in trash collection.

*[If refillable dispenser is being used, substitute the following: Refill Dispenser [or Container] [or Package] Disposal:* Offer for recycling. If recycling is not available, discard in trash.]

*[Statement B:]*

**Storage:** Do not store near heat or open flame. **Towelette Disposal:** Do not reuse towelette. Dispose of used towelette in trash. Do not flush in toilet. **Dispenser [Packet or Container] [or Package] Disposal:** Put empty [travel pack] [or Solo® Pak or [refill] packet [or packaging] [ or container]] in trash collection.

### Use sites:

Hospital and Healthcare Settings: Ambulances, Ambulatory Surgical Centers (ASC), Anesthesia, CAT Labs, CCU, Central Supply, Clinics, Dental Offices, Dialysis Clinics, Doctors Offices, Donation Centers [blood] [plasma] [semen] [milk] [apheresis], Emergency Medical Settings, Emergency Rooms, E.R., Emergency Vehicles, Eye Surgical Centers, Healthcare Settings, Healthcare Facilities, Home Healthcare, Hospices, Hospitals, ICU, Isolation Areas, Laboratory, Laundry rooms, Neonatal Intensive Care Units (NICU), Newborn nursery, Nursing homes, Operating Rooms (OR), Ophthalmic Offices, Orthopedics, Out-Patient Surgical Centers (OPSC), Patient Care Areas, Pediatrics, Pediatric Intensive Care Units (PICU), Physical therapy, Physician's offices, Radiology, Recovery Rooms, Rehabilitation, Respiratory therapy, Surgery, Surgical Centers, Transport vehicles and X-Ray.

and/or

**Critical Care Areas:** CCU, Emergency Rooms, E.R., ICU, Neonatal Intensive Care Units (NICU), Operating Rooms, Pediatric Intensive Care Units (PICU) and Surgery.

and/or

Hospital, Healthcare, and Critical Care Use Sites: May be used on hard, nonporous surfaces of: ambulance equipment surfaces; bed railings; blood glucose meters; cabinets; carts; chairs; counters; dental chairs; dental countertops; dental unit instrument trays; endodontic equipment such as apex locators; exam tables; gurneys; infant incubators [interior and exterior surfaces of]; infant warmers [interior and exterior surfaces of]; isolettes; IV poles; laboratory equipment and surfaces; loupes; operating room tables and lights; operator light switches; oxygen hoods; physical therapy (PT) equipment surfaces; slit lamps; spine back boards; stethoscopes; stretchers; stools; tables; telephones; toilet seats; and hard, nonporous outside surfaces of: amalgamators and dental curing lights; anesthesia machines and respiratory therapy equipment; apheresis machines, diagnostic equipment, dialysis machines; patient monitoring equipment, patient support and delivery equipment, pulp testers and motors; toilets; and ultrasound transducers and probes.

*[The following paragraph must be used if hospital and healthcare use sites are on the label.]*

This product is not to be used as a terminal sterilant/high level disinfectant on any surface or instrument that (1) is introduced directly into the human body, either into or in contact with the bloodstream or normally sterile areas of the body, or (2) contacts intact mucous membranes but which does not ordinarily penetrate the blood barrier or otherwise enter normally sterile areas of the body. This product may be used to pre-clean or decontaminate critical or semi-critical medical devices prior to sterilization or high level disinfection.

### **THE INFORMATION IN THIS BOX IS NOT PART OF THE LABELING**

Statements in brackets [ ] are optional or instructional. The terms "wipe(s)", "towel(s)", "towelette(s)" and "cloth(s)" can be used interchangeably throughout except for the product primary brand name which can be only changed by notification or amendment. The word "and" and symbol "&" can be used interchangeably.



**Use sites continued:** [choose from the following areas of use as appropriate; they may be listed in any order; at least one use site (including corresponding list of surfaces) must be used on the label; "Kitchen" areas of use must be included if "food contact surfaces" directions (see "Directions" page) are used.]

**[For use on hard, nonporous nonfood contact surfaces in public areas:]**

Airplanes	funeral homes	ophthalmic offices
airports	garage	patient rooms
all around the house	gas stations	patio
animal [care facilities] holding areas [hospitals] [life science laboratories] [transportation vehicles]	general use	pharmacies
assisted living and long term care facilities	grocery stores***	phone booths
athletic facilities	grooming establishments	physical therapy
automobile[s] [interiors]	gym[nasium][s]	physician offices
banquet halls	healthcare settings	play areas
barbershops	health clubs	playrooms
bars***	Health Club Use:	playgrounds
basements	Treadmill handles, elliptical handles, exercise bikes, gym equipment	prisons
beauty salons	home [centers] [healthcare]	[police <i>and/or</i> fire] vehicles
boats	hospices	public [facilities] [places] [restrooms] [telephone[s] [booths]] [transportation areas]
bowling alleys	hospitality	recreational centers
buses	hotels	rehabilitation
business & office buildings	Hotel Use: Remote controls, telephones	rental cars
butcher shops***	household	rest stops
cafeterias***	indoors	restrooms
campgrounds	industrial [establishments]	restaurants***
campers	industry	retail [establishments]
car[s] interiors [exteriors]	[institutional] laundromat	RV
casinos	[institutional] facilities	salons
catering facilities***	[institutional] kitchens***	school[s] [buses]
central supply	Institutions	shelters
children's rooms	kennels	ships
churches	laborator[y ories]	shopping centers
classrooms	laundry rooms	shower & bath areas
clinics	lavatories	sick rooms
colleges	lawn chairs [furniture] [vinyl or plastic]	spas
commercial [establishments]	libraries	storage areas
convenience stores	living [areas] [rooms]	subways
correctional facilities	locker room[s] [facilities]	supermarkets***
cruise ships	lounges	tack shops
[damp] storage areas	malls	taxis
day care centers	[manufacturing] plants***	toilet areas
delicatessens***	markets	trailers
den	meat & poultry plants	trains
dental offices	( <i>inedible areas</i> ) ***	transportation terminals
doctor offices	military institutions	transport vehicles
dorms	mobile homes	trolleys
dressing rooms	mortuaries	USDA inspected food processing facilities***
drug stores	motels	vacation homes
elevator[s] [buttons]	motor homes	veterinary offices
exercise facilities	nursery	warehouse clubs
factories	nursing homes	wellness centers
family [rooms] [areas]	office[s]	
fast food restaurants***	office buildings	
fitness centers	Office Use: keyboard, telephone, office equipment	
food processing plants***		
food storage areas***		

**THE INFORMATION IN THIS BOX IS NOT PART OF THE LABELING**

Statements in brackets [ ] are optional or instructional. The terms "wipe(s)", "towel(s)", "towelette(s)" and "cloth(s)" can be used interchangeably throughout except for the product primary brand name which can be only changed by notification or amendment. The word "and" and symbol "&" can be used interchangeably.

[The following is required if kitchen uses are included: [\*\*\*A thorough rinse with potable water after use is required for surfaces in direct contact with food. Food contact surfaces are not cleared for sanitization.]

**Hard, nonporous Use surfaces:**

**[For use on hard, nonporous nonfood contact surfaces in public areas:]**

Appliances [exterior surfaces of [or outside of]	exhaust fan [hood]	mirrors
appliance knobs	face shields	non-polycarbonate plastic
around the toilet	faucets	surfaces office furniture
ATM machines	fax machines	office machinery
barbells	filing cabinets	outside patio furniture
basin[s]	filing doors	[vinyl or plastic] [non- wooden]
bathrooms	filing handles	patio furniture/lawn chairs [furniture]
bathroom[s] fixtures [or surfaces]	finished floors [and/or hardwood]	Personal Digital Assistants
bedside furniture	fixtures	(PDA's)
blenders [outside surfaces of]	floors [sealed]	personal protective safety
breath apparatus [full face]	floors around toilets	equipment
cabinet[s] knobs	garbage cans [disposals]	picnic tables
car interiors [exteriors]	garbage storage areas	plastic shower curtains
carts	gas masks	plastic laundry basket
cash registers	glazed ceramic tile	[hamper]
cell phones [mobile]	glazed enamel tile	playground equipment
chairs	glazed porcelain	playpens
changing tables	glazed tile[s]	protective headgear
children's furniture	glazed tiled walls	public [or pay] telephones
chrome	goggles	railings
chrome, exterior surfaces	grocery carts	recycling bins
of urinals and/or toilets	grocery cart handles	refrigerated storage &
closets	grocery cart child seats	display equipment
clothes hampers	gym[nastic] equipment	refrigerators [exterior
coffee makers [outside	hampers	surfaces of [or
surfaces]	handles [toilet][toilet flush]	outside surfaces of]
commode seats	[door] [doorknob]	scales
computer[s] [monitors] [mouse]	[faucet]	seats
cooler exteriors	[refrigerator][telephone]	shopping cart child seats
counter[s]	[cabinet][dishwasher]	shopping cart handles
counter tops	[appliances]	shopping carts
cribs	handrails	shower[s] [area] [curtains]
cupboards	hard hats	[doors] [stalls] [walls]
cuspidors	headsets [head phones]	signs
desk/office	highchairs [non-wood]	silicone rubber [or PVC]
desktop	[nonfood contact	hearing product
diaper pails	surfaces of]	sinks
diaper changing tables /	keyboards	spectacles
areas / counters	kitchen counters [or surfaces]	sports equipment
dictating equipment surfaces	laminated flooring (such as	stainless steel [non- medical or
dining room surfaces and/or	Pergo)	fixture]
tables***	lamps	staplers
door[s] [door handles] [doorknobs]	lawn chairs [furniture] [vinyl or plastic]	stereo[s] [consoles]
door frames	light switches	storage areas
drain boards	linoleum	stoves [exterior surfaces of [or
drawer pulls	lockers	outside surfaces of]]
dressings carts	[medicinal] [or medicine]	table tops
dryers	cabinets	tables
electric can openers [outside	metal surfaces	tables [fast food
surfaces of]	metal work benches	restaurant]***
exam tables	microwaves	
exercise machines [equipment]	[exteriors][outside	
	surfaces of]	

**THE INFORMATION IN THIS BOX IS NOT PART OF THE LABELING**

Statements in brackets [ ] are optional or instructional. The terms "wipe(s)", "towel(s)", "towelette(s)" and "cloth(s)" can be used interchangeably throughout except for the product primary brand name which can be only changed by notification or amendment. The word "and" and symbol "&" can be used interchangeably.

[\*\*\*A thorough rinse with potable water after use is required for surfaces in direct contact with food. Food contact surfaces are not cleared for sanitization.]

**Hard, nonporous**

**Use surfaces (continued):**

telecommunications  
equipment surfaces  
[devices] [headsets]  
telephone[s]  
telephone equipment  
surfaces  
toasters [outside surfaces of]  
toilets outside [exterior]  
surfaces of  
toilet handle [and/or tank] [and/or  
rim]  
toilet seats  
toy boxes  
toy[s] [plastic]  
training toilets  
training tools  
trash cans [compactors]  
trays  
treadmills  
tubs  
[TV][remote[s]][controls]  
under counters [and/or sinks]  
urinals [exterior surfaces of]  
vanity tops  
vending machine surfaces  
vinyl covered ear muffs  
[vinyl] wallpaper  
walkers  
walls [washable]  
washer/dryers[exterior][outside]  
washing machines  
weight machines  
wheelchairs  
window blinds  
work benches [stations]  
workout equipment  
wrestling mats

**Surfaces made of:**

Acrylic  
Finished woodwork  
Formica  
Glazed ceramic  
Glazed enamel surfaces  
Glazed porcelain  
Metal  
Plastic [e.g., poly-  
Styrene or poly-  
Propylene]  
Sealed stone  
Stainless steel  
Upholstery-vinyl & plastic

**[Soils] [Cleaning of]:**

Bacon fat\*\*\*  
Baked on cheese\*\*\*  
bathtub rings  
Beverage stains\*\*\*  
[Burnt on] food stains\*\*\*  
[Burnt on] grease stains\*\*\*  
Chicken juice\*\*\*  
Coffee stains\*\*\*  
Cooking splashes\*\*\*  
Cosmetics  
Crumbs\*\*\*  
Dirt  
Dried on food\*\*\*  
Dust  
Fingerprints  
Food [residue][particles]\*\*\*  
Footprints  
grease♦  
grime  
hair gel  
hair spray  
hand [or body] lotion  
hard water stain  
limescale  
Lint  
mildew stain  
mud  
Oil\*\*\*  
outdoor grime  
Peanut butter\*\*\*  
[Pen] [or] [Pencil marks]  
pet areas [surfaces]  
pet [messes][stains]  
shaving cream  
smudges  
soap  
soap scum♦  
toothpaste  
tough soil

***[Hospital sites and Hospital surfaces are listed under “Hospital & Healthcare Settings section”]***

♦ [Grease and soap scum claims are not to be used on labeling with one-step cleaning/disinfection claims].

**THE INFORMATION IN THIS BOX IS NOT PART OF THE LABELING**

Statements in brackets [ ] are optional or instructional. The terms “wipe(s)”, “towel(s)”, “towelette(s)” and “cloth(s)” can be used interchangeably throughout except for the product primary brand name which can be only changed by notification or amendment. The word “and” and symbol “&” can be used interchangeably.

[MASTER LABEL READER'S NOTES

<sup>1</sup>All “germ” claims must be linked to bacteria (minimum: *Salmonella* and *Staph*) and at least one virus with a footnote or symbol. For example: Front panel: “Effective against household germs<sup>1</sup>” Back panel: “<sup>1</sup>Kills *Salmonella enterica*, *Staphylococcus aureus*, *Herpes Simplex Type 2*, and *Influenza A/Hong Kong*.” Bacteria and viruses may be listed separately if desired.

The label must list one or more specific organisms at least once. When organisms are listed next to a claim, the organisms may be listed in a footnote instead of directly next to the claim. [ATCC numbers are not required to be listed on production label.]

[Bactericidal] [List of bacteria] [The following bacteria passed testing for both 15 second sanitization and 3 minute disinfection with 5% organic soil.]

*Campylobacter jejuni* [ATCC 29428]

*Escherichia coli* (*E. coli*) O157:H7 [ATCC 35150]

*Klebsiella pneumoniae* [ATCC 4352]

*Listeria monocytogenes* [ATCC 19111]

Community Acquired Methicillin Resistant *Staphylococcus aureus* (CA-MRSA) [NARSA NRS123] [Genotype USA400]

Community Acquired Methicillin Resistant *Staphylococcus aureus* (CA-MRSA) [NARSA NRS384] [Genotype USA300]

Methicillin Resistant *Staphylococcus aureus* (MRSA) [ATCC 33592]

*Pseudomonas aeruginosa* [ATCC 15442]

*Salmonella enterica* (*Salmonella*) [ATCC 10708]

*Staphylococcus aureus* (*Staph*) [ATCC 6538]

*Streptococcus pyogenes* [ATCC 19615]

[The following bacteria passed testing for 3 minute disinfection with 5% organic soil.]

*Acinetobacter baumannii*, Multi-Drug Resistant [ATCC 19606]

ESBL Production *Escherichia coli* (*E. coli*) [ATCC BAA-196]

Vancomycin Resistant *Enterococcus faecalis* (VRE) [ATCC 51575]

[Sanitization] [List of bacteria] [Kills the following] in 15 seconds:]

*Campylobacter jejuni* [ATCC 29428]

*Escherichia coli* (*E. coli*) O157:H7 [ATCC 35150]

*Escherichia coli* (*E. coli*) [ATCC 11229]

*Klebsiella pneumoniae* [ATCC 4352]

*Listeria monocytogenes* [ATCC 19111]

Community Acquired Methicillin Resistant *Staphylococcus aureus* (CA-MRSA) [NARSA NRS123] [Genotype USA400]

Community Acquired Methicillin Resistant *Staphylococcus aureus* (CA-MRSA) [NARSA NRS384] [Genotype USA300]

Methicillin-Resistant *Staphylococcus aureus* (MRSA) [ATCC 33592]

*Pseudomonas aeruginosa* [ATCC 15442]

*Salmonella enterica* (*Salmonella*) [ATCC 10708]

*Staphylococcus aureus* (*Staph*) [ATCC 6538]

*Streptococcus pyogenes* [ATCC 19615]

**THE INFORMATION IN THIS BOX IS NOT PART OF THE LABELING**

Statements in brackets [ ] are optional or instructional. The terms “wipe(s)”, “towel(s)”, “towelette(s)” and “cloth(s)” can be used interchangeably throughout except for the product primary brand name which can be only changed by notification or amendment. The word “and” and symbol “&” can be used interchangeably.

MASTER LABEL READER'S NOTES CONTINUED

[Fungi] *[The following fungi passed testing for 3 minute disinfection with 5% organic soil]*  
*Candida albicans* [ATCC 10231]

[Virucidal\*] *[List of viruses\*] [The following viruses passed testing at a 3 minute contact time with 5% organic soil.]*

\*Avian Influenza A Virus (H5N1), [Strain VNH5N1-PR8/CDC-RG]

*[If Avian Influenza A virus is listed on the production label ensure that only surfaces not conducive to immersion or excess liquid are listed on the label or list specific use sites for Avian Influenza A virus meeting criteria.]*

\*Herpes Simplex Virus, Type 2 [ATCC VR-734, Strain G]

\*Human Coronavirus [ATCC VR-740, Strain 229E]

\*Influenza A/Hong Kong Virus [ATCC VR-544]

\*Respiratory Syncytial Virus (RSV) [ATCC VR-26, "Strain Long"]

*[List of viruses\*] [Hospital/Medical Uses] [3 minute contact time except HIV which has 30 second contact time.]*

\*Hepatitis B Virus (HBV) [Duck Hepatitis B Virus Surrogate] † [100% Duck Serum organic load]

\*Hepatitis C Virus (HCV) [Bovine Viral Diarrhea Virus Surrogate] † [5% organic soil]

\*HIV-1 (AIDS virus) [Strain HTLV-III<sub>B</sub>] † [5% organic soil]

*[†Mark indicates to use with HIV/HBV/HCV Directions for Use.]*

*[Optional: Choose one of the following statements:]*

[Respiratory illnesses attributable to Pandemic 2009 H1N1 are caused by influenza A virus. This product is a broad-spectrum hard surface disinfectant that has been shown to be effective against (influenza A virus tested and listed on the label) and is expected to inactivate all influenza A viruses including Pandemic 2009 H1N1 (formerly called swine flu).

This product has demonstrated effectiveness against influenza A virus and is expected to inactivate all influenza A viruses including Pandemic 2009 H1N1 influenza A virus.

This product has demonstrated effectiveness against (influenza A virus tested and listed on the label) and is expected to inactivate all influenza A viruses including Pandemic 2009 H1N1 (formerly called swine flu).

Kills Pandemic 2009 H1N1 influenza A virus (formerly called swine flu).

Kills Pandemic 2009 H1N1 influenza A virus.]

*If one step cleaner claims used and HIV-1/HBV/ HCV claims and/or directions for ultrasound transducers are included on the label, then the following also must be included on the same panel of the label:*

▲ a pre-cleaning step is required for HIV-1, HBV and HCV [and] [or] use on ultrasound transducers [or probes].

*If HIV-1, HBV or HCV or ultrasound transducers are not listed on the label, any of the one step cleaning/disinfecting claims may be used without the phrase requiring pre-cleaning.*

◆ Grease and soap scum claims are not to be used on labeling with one-step cleaning/disinfection claims.

*"To Disinfect and Deodorize" directions must be used when label includes claims to kill odor causing organisms. "To Sanitize and Deodorize" directions must be used when label includes claims to kill "99.9%" odor causing organisms.*

*Sanitizing directions must be included on all labels with 99.9% claims; disinfection directions must be included on all labels with "germ" claims.]*

**THE INFORMATION IN THIS BOX IS NOT PART OF THE LABELING**

Statements in brackets [ ] are optional or instructional. The terms "wipe(s)", "towel(s)", "towelette(s)" and "cloth(s)" can be used interchangeably throughout except for the product primary brand name which can be only changed by notification or amendment. The word "and" and symbol "&" can be used interchangeably.

**Optional claims and descriptors, location optional:**

[Footnotes or asterisks may be used with certain claims below; for more information, see Master Label Reader

Notes on previous page.]

Floral Blossom Scent	Fresh Mountain Air Scent	Rain Forest Fresh Scent
Floral Scent	Lavender Scent	Scent of Lavender
Fresh Air [Scent] [Scented]	Lemon [Scent][Scented]	Tropical Scent
Fresh Lavender Scent	Mint Scent	Ultimate Orange Scent
Fresh Lemon Scent	Mountain Spring Scent	
	Orange Breeze Scent	

[Fragrance] made with [plant] [botanical(s)] [extract(s)]

[Sparkling] [Refreshing] [Essential][Citrus] [Lemon] [Orange] [Zest] [Essence] [Blossom] [Scent]

[number to be inserted] [Textured] [household] [surface] wipes

[number to be inserted] towels for the price of [price to be inserted]

[number to be inserted] towels free!

[number to be inserted] [wet] [cleaning] [and] [disinfecting] cloths [a" x b"]

2-Go

2-in-1 [wipe]

2 sides -- 1 for scrubbing, 1 for wiping

3 [steps] in 1-wipes, scrubs and disinfects [or sanitizes] [so you finish fast] ▲

3 minutes is all it takes to kill 99.99% of bacteria [note: EPA allows 99.99% claim for disinfectants; approved directions are for disinfection in 3 minutes]

\_\_\_% bigger [quilted] wipes] [ vs. X x Y in]

\_\_\_% more wipes [ vs. \_\_\_ count canister]

\_\_\_ ct Pouch [or packs]

99.9% Effective in Killing [or Against] Common Household Germs<sup>1</sup> [or bacteria]

\_\_\_\_\_ is a [registered] trademark of \_\_\_\_\_.

[Absorbs] [Absorbent] [wipe]

A disinfectant cloth [for] [use on telephone surfaces and other telecommunications equipment surfaces]

After use, just toss wipe[s] away

Aids in reducing [or in the reduction of] cross-contamination between treated surfaces

Alcohol free [use this claim only for product without alcohol in the formulation]

All in one [cleaning power] [for an easy clean]

Also available in the \_\_\_ count size

Also available in [the] \_\_\_ count value [size] and the \_\_\_ count to-go size[s]

Also available in [the] [lemon] [fresh] [kitchen] and [lavender] [varieties]

[Also] fits [Grime Boss®] [Casabella®] and [Swiffer ®sweepers]

[Also] [Great] [Made] [Works] [well] [Appropriate] [on] [for] [stainless steel] [glass] [exterior surfaces]

[stovetops] [microwaves] [dark glazed tile] cooktop(s)

Always ready to use

Ammonia free [formula]

An effective counter cleaner

An efficient way to clean [and disinfect] [and/or sanitize]

An effective way to clean, disinfect and deodorize against odor causing organisms on hard, nonporous surfaces

An effective way to disinfect hard, nonporous environmental surfaces

Antibacterial action [With proven]

[Antibacterial] [Antimicrobial] health club equipment wipe

[Antibacterial] [Antimicrobial] hotel guest room wipe

[Antibacterial] [Antimicrobial] shopping cart wipe

Antibacterial Bathroom Wipes

Antibacterial Cell Phone wipe

Antibacterial [formula] [cleans and disinfects]

Antibacterial house [household] [surface] cleaner [cloth] [wipes] [formula]

[Antimicrobial] [antibacterial] [disinfecting] and scrubbing action all in one

Anti-viral\* [anti-virus\*] [household] [surface] cleaner [cloth]

**THE INFORMATION IN THIS BOX IS NOT PART OF THE LABELING**

Statements in brackets [ ] are optional or instructional. The terms "wipe(s)", "towel(s)", "towelette(s)" and "cloth(s)" can be used interchangeably throughout except for the product primary brand name which can be only changed by notification or amendment. The word "and" and symbol "&" can be used interchangeably.



A Quaternary [ammonium chloride] solution impregnated in a wiping cloth  
 Assures proper dilution strength for product effectiveness  
 Attach ['em] [them] [wipes] where you need [use] ['em] [them] [most]  
 Available at [fill in company name]  
 Bactericidal  
 Bactericidal in the presence of organic soil (5% blood serum) against [insert any bacteria from List of bacteria]. [This product [product name]] is  
 Bath and Kitchen [disinfectant] wipes [for hard, nonporous surfaces]  
 Bathroom: countertops, sinks, glazed tiled walls, hampers, doorknobs, tubs, showers, basins, cabinets, faucets  
 Before using on an unknown surface test in an inconspicuous spot  
 [Best] Value[!]  
 [Big] [Value] [Size] Canister Bleach-free [formula]  
 [Bigger][Larger][And][Thicker] [And][Stronger] than [standard] 7 x 8 in [disinfecting] wipes.  
 Bonus [Economy] [Great] [super] [mega] [trial] [value] [refill] [Size] [Pack]  
 Bonus - [number to be inserted] [free] towels  
 Bracket inside [Free bracket inside] [Easy to use] [easy to attach] bracket [holds] [stores] wipes [and keeps them ready to use] Refill [or use] bracket [or holder] [only] with {brand} wipes  
 [Bracket] makes wipes easy to dispense [with one hand] [Attach [bracket] to wall [or cabinet] [or/and backsplash]]  
 [Bracket] saves counter space  
 [Break or Separate] seal and remove.  
 Built-in [tough] scrubbing fibers help clean away tough stains [like soap scum♦] [and] [baked on [grease♦] [and] [messes]]  
 By Grime Boss® (tag line)  
 [Can] [easily] slip [fit] into a [purse] [pocket] [backpack] [glove compartment or box] [car] [minivan] [SUV] [lunch box or bag] [briefcase] [luggage] [suitcase]  
 Can help reduce cross-contamination on hard, nonporous, nonfood contact treated surfaces [in][at] [the] [kitchen] [school] [classroom] [bathroom] [restroom] [household] [office] [work]  
 Can help reduce the risk of cross-contamination on treated surfaces  
 Casabella® [be clean] (Casabella is a registered trademark of Casabella Holdings, LLC, Congers, NY 10920) ['be clean' is part of Casabella's trademark]  
 Clean [& disinfect any room, any time]  
 Clean & disinfect hard, nonporous surfaces [easily] all over the house [throughout your home]  
 Clean and disinfect nonporous personal protective equipment [may list use surfaces].  
 [Use [this product or product name] to]  
 Clean and disinfect on the go  
 [Clean] and [Sanitize] and [Disinfect] hard, nonporous nonfood contact surfaces [in any room in the house] [throughout the house]  
 Cleans hard, nonporous surfaces [including toilet seats]  
 Clean with just a wipe or touch [up]  
 Cleaner [and disinfectant towel [cloth]]  
 Cleaner [the following is for use in conjunction with cleaning claims only: [Big] [Bold] [Powerful] [Fast] [Cleaner] [or Cleaning][!]  
 Cleaner [quick] [easy] [effective] [fast] [effective] [convenient]  
 Cleaning [and disinfecting] your [home] [kitchen] [bathroom] [office] has never been this easy  
 Cleaning [of] floors  
 Cleans as it disinfects in one easy step  
 Cleans and deodorizes in one easy step  
 Cleans and disinfects [and sanitizes] [cell phone surfaces] [telephone surfaces,] [telephone equipment surfaces,] [dictating equipment surfaces,] [and other telecommunications equipment [surfaces] [devices]]  
 Cleans and disinfects [and sanitizes] common hard, nonporous, nonfood contact surfaces  
 Clean[s] and disinfect[s] [and sanitizes] finished floors, sinks and tubs. [Use to]  
 [Cleans and] [disinfect[s]] [and sanitizes] the following hard, nonporous, nonfood contact surfaces [insert use surfaces].  
 [[This product]]  
 Cleans and disinfects [and sanitizes] without scratching [surfaces]  
 Cleans and disinfects approximately [amount] square feet of hard, nonporous floors

**THE INFORMATION IN THIS BOX IS NOT PART OF THE LABELING**

Statements in brackets [ ] are optional or instructional. The terms "wipe(s)", "towel(s)", "towelette(s)" and "cloth(s)" can be used interchangeably throughout except for the product primary brand name which can be only changed by notification or amendment. The word "and" and symbol "&" can be used interchangeably.

[calculate per use directions and towel size]

Cleans [and disinfects] hard, nonporous floors [wall to wall]

Cleans [&][and][Shines]

Cleans [deodorizes] [disinfects] [sanitizes] [eliminates odors]

Cleans, Disinfects & Deodorizes

[Cleans] disinfects and kills [99.9% of] [germs<sup>1</sup>] [or common household bacteria]

[Cleans] disinfects and kills [viruses\*] [and common household bacteria]

[Cleans] [Disinfects] [Exterior Toilet Surfaces] [Bathroom Sinks and Counters]

[Cleans] [disinfects] [sanitizes] [Cleaner and disinfectant] [in one] [all in one [easy] step[▲]]

Cleans faster [because the [scrubbing] [texture] removes [stubborn] [stuck on] [dirt] [messes]]

Cleans hard to remove stains

Cleans on the spot with [fresh] [pleasant] [nice] [good] [great] [strong] [relaxing] [pleasing] [warm] [orange] [lemon] [lavender] fragrance

Cleans [removes] [good on] [good for] [works great on] [great on] [tough] [soap scum♦] [baked-on] [grease♦] [soils] [messes] [spaghetti sauce] [kitchen messes] [dirt] [soils] [bathroom messes]

[Cleans] sanitizes, and disinfects [and deodorizes]

Cleans [quickly] [rapidly] [swiftly] [fast] [in seconds]

Cleans things you never thought a wipe could

Cleans to restore a shine!

Cleans [tough] [messes] [grease♦] [baked on grease♦] [messes]

[Cleans] [Tubs and Showers] [Tubs & Showers]

Cloth

[Cloth-like texture] [Textured] [strong] [for] [with] scrubbing power

Cloth[s] [wipes] quickly remove dirt, spots and smudges

Club [Pack] [Box]

Container [tub]

Contains [name of active ingredient], the [same] active ingredient used in [*Brand-name*® or ™]♦

♦This product is not manufactured or distributed by \_\_\_\_\_® or ™

[Contains] the [same] active ingredient[s]† [as][used in][*Insert Brand-name*® or ™]††

† Contains [*insert name of active ingredient(s)*]

†† This product is not manufactured or distributed by [*Insert company name* ® or ™]

Contains no alcohol for alcohol-sensitive [equipment] [and] [surfaces] [*use this claim only for product without alcohol in the formulation*]

Contains [number] canisters [plus] [and] [number] refills

[Contains] same wipes [you love] [easy to grab]

Convenient [*or Easy or Simple*] [way] to Store [Packaging]

Convenient, quick and easy cleaning all around your [home] [business] [office] [workplace]

Convenient [size] [*or Packaging*]

[Convenient] way to [clean] [and] disinfect your [household] [kitchen] hard, nonporous, nonfood contact surfaces. [This product] [is][the]

Convenient way to keep your [home] [office] [surroundings] [environment] [looking] [just] clean[ed] [and] [disinfected] [sanitized]

Covers [43%][X%] more area than standard 7 x 8" [disinfecting] wipe

Cuts grease♦ [and] grime

Cuts grease♦ and kills common household bacteria

Cuts the toughest grime and grease♦ without scratching your surfaces

[Cuts through] [Eliminates] Bathroom Surface Grime♦

Cuts through the toughest grime

Decorative, [stay moist] package

Deep down clean!

Deliver[s] non-acid disinfectant [sanitizer] and cleaning performance

[Deodorizes] and [disinfects] [sanitizes] as it cleans

Designed with the planet in mind [*use only with soft pak (reduced plastic) packaging*]

Designer [decorator] [holiday] [seasonal] series [Decorative Pack] [Designer Pak]

**THE INFORMATION IN THIS BOX IS NOT PART OF THE LABELING**

Statements in brackets [ ] are optional or instructional. The terms "wipe(s)", "towel(s)", "towelette(s)" and "cloth(s)" can be used interchangeably throughout except for the product primary brand name which can be only changed by notification or amendment. The word "and" and symbol "&" can be used interchangeably.

Destroys a common flu virus\* (\*Influenza A/Hong Kong)  
 Destroys common household [germs<sup>1</sup>] [or bacteria and viruses\*]  
 [Disinfect] [clean] [your cart] before you shop  
 Disinfects and cleans tough stains  
 Disinfects bathroom bacteria (Staph, Salmonella, E Coli, Strep)  
 Disinfects [health club equipment] [treadmill handles][elliptical handles][exercise bike handles][weight benches]  
 [Disinfect] [sanitize] *and/or* [touch-up clean] [Use [the product] [the wipes] to]  
 Disinfect [sanitize] and scrub clean  
 Disinfect, [sanitize] clean and deodorize hard, nonporous surfaces [in rest rooms and toilet areas, behind and under sinks  
 and counters, garbage cans and garbage storage areas, and other places where bacterial growth can cause  
 malodors.]  
 Disinfect [sanitize] hard, nonporous, nonfood contact surfaces [Use to]  
 Disinfectant [sanitizer] [disinfecting] [sanitizing] home [house] [household] [surface] cleaner [cloth]  
 Disinfectant [sanitizer] on all hard, nonporous surfaces in inedible product processing areas, non-processing areas  
 [and/or exterior areas]  
 Disinfecting [sanitizing] [cleaning] [wipes] [formula]  
 Disinfects common household kitchen and bathroom bacteria  
 Disinfects in [just] three [3] minutes  
  
 Disinfects [kitchen] [bathroom] [hard, nonporous floors] [bacteria] [\*\*] [and] [germs<sup>1</sup>] [viruses\*] [on hard, nonporous,  
 nonfood contact surfaces] in [just] 3 minutes  
 [\*Effective against common cold virus caused by Coronavirus and common flu virus  
 caused by Influenza A/Hong Kong]  
 [\*\*Effect against *Escherichia coli* (*E. coli*), *Salmonella enterica* (*Salmonella*), *Staphylococcus aureus* (Staph), [and]  
*Pseudomonas aeruginosa*.]  
  
 Disinfects [odor causing] [common] [household] [kitchen *and/or* bathroom] bacteria[\*\*] [(\*\*Effect against *Escherichia coli*  
*(E. coli)*, *Salmonella enterica* (*Salmonella*), *Staphylococcus aureus* (Staph), [and] *Pseudomonas aeruginosa*.)]  
 Disinfects [sanitizes] [as it cleans] [and scrubs in one easy step ▲]  
 Disinfects [sanitizes] hard, nonporous, nonfood contact environmental surfaces  
 Disinfects [sanitizes] headsets and telephones  
 Disinfects [sanitizes] while cleaning [up] stubborn messes  
 Dispenses [one wipe at a time]  
 Disposable  
 [DIY][Project][Disinfecting][Wipes]  
 Does not contain [chlorine] [bleach] or [ammonia]  
 Do not use on natural marble, windows, unpainted wood, brass, clear plastic or colored grout.  
 Don't just mask odors - [eliminate][neutralize] them  
 [Double] [dual] [two] -sided scrubbing wipes  
 Double *or* super value [size] [pack]  
 Double-sided scrubbing wipes  
 Dries without streaking  
 Dual action cleans up stubborn messes while it disinfects [sanitizes]  
 Dual [action] [purpose] [scrubs] [wipes]  
 Each pre-moistened and disposable wipe cleans, deodorizes and kills common household germs<sup>1</sup> [or bacteria] all around  
 your [home] [business] [office] [workplace]  
 Each pre-moistened, disposable wipe [actually] kills germs<sup>1</sup> [or bacteria] [even bacteria that cause odor] [wherever you  
 use it]  
 Each pre-moistened, disposable wipe has a scrubbing side for [tough stains] [tough jobs] [like] soap scum♦ and grease♦  
 and a softer side for wiping away everyday messes.  
 Easiest way to keep your house clean everyday  
 [Easily] [Effectively] [Conveniently] cleans [and] [disinfects]  
 Easy [and convenient] way to [touch-up] [clean] your [home] [kitchen] [bathroom] [office] every day  
 [Easy] [and convenient] way to [clean] [sanitize] [touch-up] [and] [disinfect] [hard, nonporous nonfood contact surfaces]

**THE INFORMATION IN THIS BOX IS NOT PART OF THE LABELING**

Statements in brackets [ ] are optional or instructional. The terms “wipe(s)”, “towel(s)”, “towelette(s)” and “cloth(s)” can be used interchangeably throughout except for the product primary brand name which can be only changed by notification or amendment. The word “and” and symbol “&” can be used interchangeably.

[your bathroom [or exterior toilet] surfaces] [This product *or product name* is the]  
 [Easy] [convenient] [dispensing] lid [closure] [cap] [package]  
 Easy drop-in refill[s]  
 Easy flip top lid  
 [[Easy] one-handed [use] [dispensing]] [dispense [wipes] [with [only] [just] one hand] [grab [wipes] [a wipe] [and wipe] with  
 [just] [only] one hand] [easily] grab [wipes] one at a time]  
 Easy [or Easier] [One or 1] [Hand or handed] dispensing [lid]  
 Easy or EZ start lid [cap]  
 Easy [or Easier or Accessible] [way] to store [packaging or package]  
 Easy [or Easier or Simple] [Storage] [and] [Dispensing]  
 Easy [or Easier or Simple] [way] [to] carry around [or lug around] [the] [your] [house] [home]  
 Easy [or Easier or Simple] [way] to [Store] [and] [Dispense]  
 Easy [or Easier] [to] [start or start-off or open] [and] dispense  
 Easy pop [top]  
 Easy pop-up [tub]  
 Easy start lid [package]  
 Easy to carry [around the house]  
 Easy to open [thread]  
 Easy to Store [Eco-Pak]  
 Easy [easier] to use [easy to refill]  
 Easy to use package [canister] keeps [your] wipes moist  
 Easy way to [clean all over the house] [disinfect your bathroom or exterior toilet surfaces]  
 Easy way to [clean] [and] [disinfect] [sanitize] [the following hard, nonporous, nonfood contact surfaces]] [anywhere you  
 travel]: *[insert use surfaces]*  
 Easy way to touch-up clean [your bathroom every day]  
 Eco-conscious packaging *[use claim only with soft pak (reduced plastic) packaging]*  
 [Economical] Refills available  
 [Economical] Refill[s] [one] [1] [two] [2] [three] [3] [four] [4] [*various numbers*] -pack  
 Economy [size]  
 Eco-Pack  
 Eco-Pack\* [or Eco-Pak\*] [the less plastic alternative] [to bulky canisters] [packaging or soft packaging] [with extra large  
 wipes] [(uses X%) [percent] less plastic than [previous] [similar count] canisters)]  
 [Eco] [Soft] [Packs] [Paks]  
 [Eco-Pack][Soft Packs][Eco Soft Packs]  
 Effective against bathroom bacteria and viruses\*  
 Effective against *[insert organisms]*  
 Effective against flu virus\* \*Influenza A/Hong Kong (Hong Kong flu)  
 Effective against household germs<sup>1</sup> [and/or bacteria] [from sneezing/coughing/touching]  
 Effective against the common flu virus\* (\*Influenza A/Hong Kong)  
 Effective [at] [disinfecting] [and] [sanitizing]  
 [Effective] [cleaning] [disinfecting] [sanitizing] has never been [faster or easier] [more convenient]  
 Effective daily cleaner  
 Effective [disinfecting] [sanitizing] for use in *[insert use sites]*  
 Effective in 3 minutes against *Escherichia coli (E. coli), Staphylococcus aureus, Salmonella enterica,*  
*Pseudomonas aeruginosa, and Klebsiella pneumonia*  
 Effective [in 3 minutes] against the following every time you wipe:  
 [Common] household [kitchen] [bathroom] bacteria  
 Odor causing bacteria  
*Escherichia coli (E. coli), Klebsiella pneumoniae, Pseudomonas aeruginosa, Staphylococcus aureus*  
 (Staph), and *Salmonella enterica (Salmonella)* [bacteria that cause food- borne illnesses]  
 \*Influenza A/Hong Kong [[stomach] flu virus\* and/or cold virus\*], \*Herpes Simplex Type 2  
 Effective in the presence of 5% blood serum contamination *[if HIV / HBV / HCV listed on the label add: preclean for HIV /*  
*HBV / HCV]*  
 Effective [sanitizing] for use in *[insert use sites]*

**THE INFORMATION IN THIS BOX IS NOT PART OF THE LABELING**

Statements in brackets [ ] are optional or instructional. The terms “wipe(s)”, “towel(s)”, “towelette(s)” and “cloth(s)” can be used interchangeably throughout except for the product primary brand name which can be only changed by notification or amendment. The word “and” and symbol “&” can be used interchangeably.

Effectively cleans everyday messes  
Effectively disinfects in the presence of organic soil (5% blood serum) [if HIV / HBV / HCV listed on the label add:  
preclean for HIV / HBV / HCV]  
Effectively disinfects [sanitizes] common hard, nonporous, nonfood contact household surfaces  
[Eliminates] [Destroys] [Attacks] [Gets rid of] [99.9% of] [bacteria] [germs<sup>1</sup>] [all] around [your] [the]  
[bathroom] [restroom] [kitchen] [school] [classroom] [home] [house] [office]  
Eliminates potential for overspray  
Eliminates [removes] [bacteria] [viruses\*] [germs<sup>1</sup>] from [insert use surfaces]  
Eliminates [removes] odors  
Everyday, every room disinfectant [sanitizer]  
Everything you need [to clean] is already in the wipe  
Exhibits effective virucidal\* activity; kills \*Influenza A/Hong Kong [(representative of the common flu virus)] and \*Herpes  
Simplex Type 2 [(causative agent of genital herpes)]  
[Extra] convenient

*[Note to Reviewer: the following are non pesticidal, cleaning claims referring to the towelette size. The general "extra large wipe" language was previously approved; adding specific details] [Standard wipes 7x8"]*

Extra large<sup>†</sup> wipe[s] [Y" x Z"] [compared to] [versus] [our] [standard] [A" x B" size] [7x8"] [wipes]  
Extra-large<sup>†</sup> wipe[s][for extra cleaning]  
Extra-large<sup>†</sup> wipe[s] [so you can [do] [clean] [43%] [X%] [more] [with it] [them] [than] [regular size wipes]  
Extra-large<sup>†</sup> wipe[s] [clean] [more] [surface] [area[s]] [than] [our] [regular] [standard] [7x8"] [size] [wipe[s]]  
Extra-large<sup>†</sup> wipe[s] are [43%] [X%] bigger than standard wipes, so you use less  
[43%] [X%] larger wipe<sup>†</sup> [so you use fewer sheets] [for] [more] [extra] [cleaning]  
[43%][X%] Larger wipe<sup>†</sup> [than [standard] [7 x 8 in] [disinfecting wipes]  
[43%] [X%] larger wipe<sup>†</sup> [to clean] [more] [larger] [area[s]] [cleaned]  
More wipe<sup>†</sup>, more surface cleaned  
Clean larger area[s] with [43%] [X%] larger wipe<sup>†</sup>  
<sup>†</sup>[versus [our] [standard] [7x8"] wipe[s]]

Fast [and easy cleaning]  
[Fast] [Convenient] [Portable] way to [sanitize] [disinfect] hard, nonporous, nonfood contact [household] surfaces  
Fast convenient way to [clean] [disinfect] [sanitize] hard, nonporous, nonfood contact surfaces [anywhere you travel]  
Fast drying; leaves no dull or sticky residue  
Fiber is made from Wood Pulp [derived from trees grown in environmentally managed forests]  
[Finally] a wipe that cleans [and disinfects] [and sanitizes]  
Fights germs<sup>1</sup> in the workplace  
Fits [almost anywhere] [easily] [conveniently] in drawers  
Fits Grime Boss [Basics] [Casabella] [and] [Swiffer®] leading brand Sweepers [Swiffer® is a registered trademark of The Proctor and Gamble Company]  
Fits Swiffer® Sweeper [poles] for [spot floor] [cleaning] [and][disinfecting] [Swiffer® is a registered trademark of The Proctor and Gamble Company]  
Flushable [Flushing] [Towelettes] [Wipes] [Towels] [Not recommended in motor homes or with basement pump systems]  
[Never Flush More than 1 wipe at a time] [Will Not [Won't] Harm Well-Maintained Sewers and Septic[s] [Systems]]  
For a powerful clean  
For everyday [use] [messes]  
For [fill in company name]  
For finished sealed wood vinyl and glazed tile hard, nonporous floors  
For finished wood, vinyl and tile floors [and other hard, nonporous, nonfood contact surfaces]  
For general [cleaning] [and] [disinfecting] [sanitizing] [nonfood contact] hard, nonporous surfaces  
For hard, nonporous[, nonfood contact surfaces] [floors]  
For hard, nonporous, nonfood contact household surfaces [all around the house] indoor and outdoor  
For [light] [touch-up] daily [quick cleaning] [clean-ups] [in one easy step]  
For [professional] [pro] [commercial] [contractor] [industrial] use  
For [professional] [pro] [commercial] [industrial] [cleaning and] disinfecting

**THE INFORMATION IN THIS BOX IS NOT PART OF THE LABELING**

Statements in brackets [ ] are optional or instructional. The terms "wipe(s)", "towel(s)", "towelette(s)" and "cloth(s)" can be used interchangeably throughout except for the product primary brand name which can be only changed by notification or amendment. The word "and" and symbol "&" can be used interchangeably.



Formulated for use in daily maintenance programs with a balance of detergents, biocides and malodor counteractants that deliver effective cleaning, disinfecting and malodor control.

Formulated to aid in the reduction of cross-contamination on treated surfaces in the home, schools, institutions and industry.

Formulated to disinfect hard, nonporous, nonfood contact inanimate environmental surfaces including: [This product or product name]

For use [at home], [away from home], [in public places] [on the go]

For use in critical care areas [where control of the hazards of cross-contamination between treated surfaces is of prime importance]

[For] [use] [in] kitchen[s], [and] [baths] [bathrooms] [floors] [and all around the house]

[For use on] [disinfects] [cleans] bathroom and kitchen floors

For use on [equipment] [and] [surfaces] sensitive to alcohol [use this claim only for product without alcohol in the formulation]

For use on [finished floors], [sealed floors], [glazed tile] floors], [lamineate flooring], [and] [linoleum]

For use on multiple hard, nonporous, nonfood contact surfaces [around the home]

For use while traveling

For when a regular wipe [just] can't get the job done

For your toughest kitchen [and/or bathroom] messes

[Fresh] [pleasant] [nice] [good] [great] [strong] [relaxing] [pleasing] [warm] [orange] [lemon] [lavender] smell [or scent]

Fresh Air [Scent] [Scented] [Wipes]

Freshens [as you clean]

Freshens your [home] [kitchen] [bathroom] [office]

Germicidal [house] [household] [surface] cleaner [cloth]

Germ-killing<sup>1</sup> [or bacteria-killing] household cleaner [cloth]

Gets rid of [eliminates] odors

Gets up stuck-on messes [so you don't have to get on hands and knees]

Good for [cleaning][and][deodorizing][and] disinfecting sports equipment

Good for disinfecting after DIY projects

Good for disinfecting [plumbing][bathroom][cleaning][tools] [and][implements]

Good for disinfecting sports equipment [and] [gear]

[such as][including][football][basketball][lacrosse][field][hockey][soccer][and][camping][fishing][gear]

Grasp Wipe & Pull Wipe Free [!]

Grease♦ cutting formula [power]

Great for cleaning around the toilet

Great for [grease♦ cutting] [on-the-go cleaner] [touch-up cleaning]

[Great] for traveling [for use at work] [for use in public restrooms] [for use on hard, nonporous, nonfood contact surfaces] [for floor[s]] [touch-ups] [for touch-up cleaning]

[Great] for [the] school[s] [or] [classroom(s)]

Great for use in your kitchen, bathroom, and [throughout] [all over] [all around] the house

[Great] for [use or cleaning] [or touch-up cleaning] on hard, nonporous surfaces:

[At work/the office] [Clean-ups all over the house] [Every day or daily] [In public restrooms]

[Light cleaning or daily touch-ups [quick cleaning] [on floors] [on household surfaces indoors and out[doors]]

[On public telephones] [Playgrounds] [Recreational areas] [Throughout the house] [while traveling]

Great on-the-go disinfectant [cloth]

Great [value] [price per wipe]

Grime Boss® is a registered trademark of Nice-Pak Products, Inc.

Guaranteed quality every day

Handles daily clean-ups [with no need for additional sprays, sponges or buckets]

Has [leaves] a clean and/or light fresh [lemon] [rain] [floral] [lavender] [orange] [scent] [fragrance] [smell]

Has [leaves] a [fresh] [pleasant] [nice] [good] [great] [strong] [relaxing] [pleasing] [warm] [long lasting] [orange] [lemon] [lavender] scent [aroma] [bouquet] [odor] [perfume]

Heavy duty cleaner [or cleaning] [cloth]

Heavy duty disinfectant cleaner [that cleans, disinfects and deodorizes] [in one labor saving step▲]

Heavy duty disinfecting [for][big messes][projects]

**THE INFORMATION IN THIS BOX IS NOT PART OF THE LABELING**

Statements in brackets [ ] are optional or instructional. The terms “wipe(s)”, “towel(s)”, “towelette(s)” and “cloth(s)” can be used interchangeably throughout except for the product primary brand name which can be only changed by notification or amendment. The word “and” and symbol “&” can be used interchangeably.



Heavy [or light] [duty] [jobs]  
 [Helps] [eliminate(s)] [neutralize(s)] odors with a fresh [clean] scent.  
 [Helps] [kill][s] [eliminate][s] odor causing bacteria  
 Helps prevent cross-contamination on treated surfaces [between] [household] [hard, nonporous, nonfood contact surfaces]  
 Helps you finish [cleaning] fast [quickly]  
 Hold Pack & Pull Wipe Free [!]  
 Hospital disinfectant [disinfection] [*use only when hospital use sites on label*]  
 Household [disinfectant] [sanitizer]  
 Household surface wipes  
 Hydro-Loc™ [or Proprietary Hydro-Loc™] [Lid] [system] [helps lock in moisture] [*and/or helps keep lid open so it's easier to pull out and/or use wipes*] [with one hand]  
 Ideal for high touch surfaces  
 Ideal for sanitizing [high chairs] [,] [car seats\*] [,] [toys\*][and] [toy chests] [\*Use on hard, nonporous, nonfood contact surfaces only]  
 Ideal [great] for many cleaning jobs in the kitchen [and the bathroom]  
 Improved scrubbing fibers  
 [Improves labor results by] effectively controls [controlling] malodors  
 Includes \_\_\_ count refill [pack] [contains] \_\_\_ wipes  
 Includes [or Bonus] [On the Go] Travel Pack [or Pak]  
 [*Insert product or trade name*] is a registered trademark of [*Insert company name*]  
 [It's] the easiest [easier] [easy] way to grab a wipe  
 [Jumbo] [Super] size wipes  
 Just [pull] [pop] [clean] wipe and toss  
 Just wipe and throw away. [It's that easy.]  
 Kills 99.9% of bacteria [*insert any bacteria from List of bacteria*] [This product [*or product name*]]  
 Kills 99.9% of bacteria on hard, nonporous floors [in 15 seconds]  
 Kills [99.99% of] [common household] [bacteria] [household germs<sup>1</sup>] [in 3 minutes] [on hard, nonporous, nonfood contact surfaces[s]]  
 Kills [common household] bacteria [left [behind] by shoes and/or pets and/or tracked-in dirt]  
 [*note: EPA allows 99.99% claim for disinfectants; approved directions are for disinfection in 3 minutes*]  
 Kills 99.99% of [*insert organism*] in 3 minutes [on hard, nonporous, nonfood contact surfaces]  
 Kills 99.99% of [or removes or effective against] [odor causing] [common] [household] [kitchen and/or bathroom] bacteria in 3 minutes  
 Kills 99.9% of [common] germs<sup>1</sup> [on hard, nonporous, nonfood contact surfaces]  
 [Kill[s]] [99.9% of] [effective against] [disinfect] [bacteria [Salmonella]] [that cause odor] [that cause scum and slime on hard, nonporous surfaces] in just] [3 minutes]  
 Kills [99.9%] of germs<sup>1</sup> on [health club equipment] [treadmill handles] [elliptical handles] [exercise bike handles] [weight benches]  
 Kills 99.9% of [*organism*] and [*organism*] in 15 seconds on hard, nonporous, nonfood contact surfaces  
 Kill[s] 99.9% of [remove[s]] [effective against] [odor causing] [common] [household] [kitchen and/or bathroom bacteria]  
 Kills a common flu virus\* (\*Influenza A/Hong Kong) [flu-causing virus]  
 Kills a flu-causing virus\* (\*Influenza A/Hong Kong)  
 Kills Avian Influenza A on environmental surfaces [*testing was conducted with 5% bovine serum so pre-cleaning wording not required*]  
 Kills bacteria and viruses\* in the bathroom or on the exterior toilet surfaces  
 Kills bacteria in 3 minutes  
 Kills [bacteria] [viruses\*] while it cleans tough [bathroom messes]  
 Kills common household bacteria [and viruses\*]  
 Kills Common [Kitchen] [Household] [Bathroom] Germs<sup>1</sup> [or bacteria]  
 Kills [disinfects] [sanitizes] [effective against] over [X] illness causing germs<sup>1</sup>, [including cold & flu viruses\*] [in 3 minutes]  
 [Kills] [Effective against] [MRSA] [(Methicillin-Resistant *Staphylococcus aureus*)]  
 Kills [eliminates] [99.9%] [*insert any bacteria from List of bacteria*] on hard, nonporous, nonfood contact surface  
 Kills [eliminates] [disinfects] [kitchen] [bathroom] [common] [household] [bacteria] [viruses\*] [germs<sup>1</sup>]

**THE INFORMATION IN THIS BOX IS NOT PART OF THE LABELING**

Statements in brackets [ ] are optional or instructional. The terms "wipe(s)", "towel(s)", "towelette(s)" and "cloth(s)" can be used interchangeably throughout except for the product primary brand name which can be only changed by notification or amendment. The word "and" and symbol "&" can be used interchangeably.

Kills 99.9% of Viruses\* & Bacteria\*\*

\*Effective against common cold virus caused by Coronavirus and common flu virus caused by Influenza A/Hong Kong)

\*\*Effective against *Escherichia coli* (*E. coli*), *Salmonella enterica* (*Salmonella*), *Staphylococcus aureus* (Staph), [and] *Pseudomonas aeruginosa*)

[Kills] [Eliminates] [Removes] [Destroys] 99.9% of [bacteria] [germs<sup>1</sup>] [and leaves surfaces] [clean and] [disinfected]

Kills flu virus\* (\*Influenza A/Hong Kong) or [Kills Influenza A/Hong Kong flu virus]

Kills [germs<sup>1</sup> [or bacteria] ordinary soap can't] [germs<sup>1</sup> [or bacteria] that ordinary cleaners don't] [germs<sup>1</sup> [or bacteria] while it cleans]

Kill germs<sup>1</sup> [Use this product to]

Kills household [exterior] toilet surface [bathroom germs<sup>1</sup> [or bacteria]]

[Kills Influenza A]/Hong Kong (Hong Kong flu virus) and \*Herpes Simplex Type 2 virus

Kills [99.9% of] odor causing bacteria

Kill[s] [remove[s]] [effective] against [common] household viruses\* [\*Herpes & flu (Influenza A/Hong Kong)]

Kill[s] [remove[s]] [effective] against [the following] [organisms]]

[HIV] Human immunodeficiency virus type 1

[The virus\* that causes the] [flu (\*Influenza A/Hong Kong)]

[insert from List of bacteria and/or viruses]

Kills [the] cold [&] [and] [flu] viruses\*[,] [E.coli] [Salmonella] [Strep] [MRSA] [Staph] [Listeria] (\*Effective against common cold virus caused by Coronavirus [and common flu virus caused by Influenza A/Hong Kong])

Kills [the] cold [and flu] viruses\* (\*Effective against common cold virus caused by Coronavirus [and common flu virus caused by Influenza A/Hong Kong])

Kills [the common flu virus\* (\*Influenza A/Hong Kong)] [the flu virus\* \*Influenza A/Hong Kong] [the most common flu virus\* (\*Influenza A/Hong Kong)]

[Kitchen] and/or [Bathroom] [disinfecting] wipes

Kitchen Fresh

Large enough to use with [or use on or fit] [Swiffer®] [Grime Boss] Floor Sweepers

Large [size] [actual size of wipes] [textured] [wipes] [disinfecting cloths]

Large, thick and quilted [cloth] for everyday cleaning

Leaves behind a streak free shine

Leaves [behind] [light] [long-lasting] [a shine every time] [clean] fresh [citrus] [floral] [orange] [[scent][every time you wipe]]

Leaves hard, nonporous, nonfood contact surfaces disinfected

Leaves [household] [bathroom] [restroom] surfaces sanitary

Leaves your bathroom fresh and clean in [just] minutes

Leaves your [home] [kitchen] [bathroom] [office] clean [and] disinfected [and smelling fresh]

Lemon [Scent][Scented][Scrubbing][Wipes]

Less [reduced] packaging [less to throw away][less bulky than canisters][less plastic than [similar count]canisters]

Low price per wipe

Low-streak [-residue] [formula] [for] [is great on] [glass] [mirrors] [dark countertops] [stainless steel]

Made by the manufacturer of Sani-Cloth® [brand] [disinfecting] [wipes], the leading disinfecting wipe in hospitals<sup>‡</sup> (†Not for use in hospitals. Not intended to imply heightened efficacy either alone or when compared to other products) [Reader's note: to be used on retail product labels only]

Made in a 0% landfill facility

[Made in [USA] [with domestic and imported materials] [insert country]]

Made with EcoFlush™ technology

Made with [Tencel®] [Veocel™]

Made with [x%] [Tencel®] [Veocel™] [fiber]

Made with [Tencel®] [Veocel™] the [ultra-soft] [soft] [strong] [sustainable] [durable] [renewable] [100% renewable] [resource] fiber<sup>∇</sup> (∇Fiber is made from wood pulp derived from trees grown in environmentally managed forests)

[Makes] [wipes] [as] easy to grab [as they are to use]

Makes [your job] [cleaning] [easier] [easy]

Makes your job easier in the kitchen/bathroom

**THE INFORMATION IN THIS BOX IS NOT PART OF THE LABELING**

Statements in brackets [ ] are optional or instructional. The terms “wipe(s)”, “towel(s)”, “towelette(s)” and “cloth(s)” can be used interchangeably throughout except for the product primary brand name which can be only changed by notification or amendment. The word “and” and symbol “&” can be used interchangeably.

Meets efficacy standards for [hospital type] disinfectant [or sanitizing] wipes. [This product]  
 Moist household [cleaning] wipes  
 Moist Wipes  
 Moisture lock lid  
 More absorbent [to clean up spills]  
 More wipes for the same price  
 Multi [action] [clean]  
 Multi-purpose [cleaner] [and][disinfectant] for [arts and crafts][projects]  
 Multi-purpose cleaner [and disinfectant] [Multi [-refill] pack]  
 [Multi-purpose] kitchen bathroom [everyday] [daily] [touch-up] [cleaning] cleaner  
 Multi-room [or Multi-Purpose] disinfectant [or disinfecting] [and/or cleaner]  
 Multi-Surface<sup>‡</sup> [or Multiple Surfaces<sup>‡</sup>] [cleaning] [and] [disinfecting] [wipes]  
     <sup>‡</sup>Hard, nonporous, nonfood contact surfaces only  
 Multi-purpose disinfecting for multiple surfaces<sup>‡</sup> (<sup>‡</sup>Hard, nonporous, nonfood contact surfaces only)  
 Next wipe pops up automatically [every time] [!]  
 No bottles, no sponges, no mess  
 No canister needed  
 No hassle lid [cap]  
 No mixing [and/or spraying] [and/or fuss] [and/or need to rinse]  
 No [mixing] [spraying] [mess] [fuss] [no muss]  
 No more need to get on your hands and knees to [scrub] [clean] stubborn spots  
 Non-abrasive  
 Non[-]Linting  
 Non-scratch[ing] clean[ing] of showers and tubs, shower doors and curtains, fixtures and exterior toilet bowl surfaces  
 Non-scratching [wipe]  
 Non[-]streaking  
 Non-woven, disposable [cloth][towelette[s]] [wipe[s]], pre-saturated with a quaternary disinfectant cleaner.  
     [This product or product name] are [is a]  
 No [pinched fingers] [rips] [tears]  
 No rinsing required [use with sanitizing directions or nonfood contact surface disinfection only]  
 No rinse sanitizing [wipes] [use with sanitizing directions or nonfood contact surface disinfection only]  
 No sponges, no rags, no buckets, no mess  
 Not for home owner use  
 Not for in-home use  
 Not for individual sale  
 Not for sale in [insert name of state(s)]  
 Not for sale [or use] after [insert date]  
 Not for use on unfinished floors [or on carpet]  
 No threading [required]  
 Odor [elimination] [neutralization] [neutralizing]  
 One [or 1] side is [like a scrubbing sponge, the other is like a wipe] [textured for [cleaning] [tough] [messes] [debris] [the other is smooth for wiping]]  
 One step▲ disinfectant and bactericidal according to the current AOAC Germicidal Spray Products as Disinfectants  
     Method modified in the presence of 5% organic serum against [insert any bacteria from List of bacteria]  
 One step▲ cleaning [and/or disinfecting] [and/or deodorizing] [disinfect and/or touch-up clean] [cleans and/or disinfects and/or deodorizes] [anytime] [daily] [every day] [in one easy step ▲] [everywhere] [anywhere] [on hard, nonporous, nonfood contact,] [bathroom and/or kitchen] surfaces or [on household surfaces]  
 One step▲ disinfectant cleaner that is effective against a broad spectrum of bacteria when used as directed  
 One [wipe] at a time dispensing  
 On hard, nonporous, nonfood contact, inanimate environmental surfaces this product kills the following [bacteria] [viruses\*] [germs<sup>1</sup>]:  
 On-the-go disinfectant  
 Our most powerful cleaning formula ever  
 [Our promise] [Quality & Satisfaction] [100% Guaranteed Or your money back]

**THE INFORMATION IN THIS BOX IS NOT PART OF THE LABELING**

Statements in brackets [ ] are optional or instructional. The terms “wipe(s)”, “towel(s)”, “towelette(s)” and “cloth(s)” can be used interchangeably throughout except for the product primary brand name which can be only changed by notification or amendment. The word “and” and symbol “&” can be used interchangeably.

Oversized wipes  
 [Package][*insert type of package*] made from [x%] recycled materials  
 Peel [back] [here] [for additional labeling]  
 Perfect for carrying in the [Purse], [Car], [Diaper Bag]  
 Perfect for cleaning up [around the toilet]  
 Perfect for disinfecting [sanitizing] [exterior toilet surfaces *or* around the exterior toilet surface]  
 Perfect for [tough] [harsh] [cleaning] jobs [*or* messes] [that require] [extra] [more] [additional] [power] [scrubbing]  
 Perfect for use in [*or* on] [airports], [airplane trays], [trains], [public areas], [airplane bathrooms], [hotel rooms],  
 [offices] [play areas] [restaurants]  
 Perfect size for kitchens [*and/or* bathrooms]  
 Phosphate free  
 [Picks up] [cleans] [Traps] [particles] [dust] [dirt] [hair][*and*] [&] [crumbs]  
 Pop and [clean] [go]  
 Pop-up [-cap] [top]  
 Pop up dispensing  
 [Pop-up] [First] [Wipe]  
 Portable [pack] [size] [can be reattached] [with bracket]  
 Power [*or* Extra power] [for] [tough] cleaning messes  
 Powerful cleaner for kitchen and bath  
 Powerful Scrubbing Power  
 Powers through [tough messes] [the dirt] [the grime] [grease♦] and [helps] [eliminate(s)] [neutralize(s)] odors  
 Powers through [the toughest] [grease] [grime] [*and* messes] [*and* eliminates] [odors on contact]  
 Pre-measured  
 Pre-moistened [cleaner *and*] disinfectant towel [*or* cloth]  
 Pre-moistened [Towelettes]  
 [Pre-moistened] [wet] disinfecting [textured] [antibacterial] [wipes] [towelettes][towel[s]] [cloths]  
 Pre-moistened [wet] household cleaning [sanitizing] wipe  
 Pre-moistened with a special cleaning formula [to handle daily clean-ups without bottles, sponges, or buckets] [*product name are*]  
 [Pre-started] [First] [Wipe] [for easy [*or easier*] dispensing]  
 [Product name] [*or* this product] Control[s] cross-contamination of common household germs<sup>1</sup> [*or* bacteria] on treated hard, nonporous, nonfood contact surfaces [*and* has a clean, fresh scent]  
 [Product name] [*or* this product] Help[s] control common household germs<sup>1</sup> [*or* bacteria] on treated surfaces while keeping your office [workplace] [station] [business] clean and dust-free  
 {*Product variety*} contains [X%] Tencel® [fibers]  
 Proven “one-step” ▲ disinfectant [cleaner] which is effective in the presence of 5% serum contamination  
 Pull [back] [here]  
 Pull n’ go [pack]  
 Pull-N-Wipe lid [cap]  
 [Put[s] wipes [where you need [*or* use them] [*or* want them]] [within [easy] [arms] reach [*or* at your fingertips]]  
 Quaternary dispersal with no hazard of cross-contamination on treated surfaces  
 Quick and Easy Cleaning  
 Quick drying  
 Quick easy [clean-ups]  
 [Quickly] eliminates [lingering] [food] odors on surfaces  
 Quilted [wipe] [pre-sprayed towels]  
 [Ready] [Easy] [EZ] [First] [Wipe] [Start]  
 Ready pull  
 [Ready to] [great for] [use] [on] [cleaning and disinfecting] [cleaning and sanitizing] the following hard, nonporous , nonfood contact [specialty] surfaces: *[List sites]*  
 Ready to [sanitize] [on] the following [bathroom/household/public] hard, nonporous, nonfood contact surfaces: *[List sites]*  
 Ready to [use] [clean] [disinfect] [on] the following [kitchen/bathroom/household/public] hard, nonporous , nonfood contact surfaces: *[List sites]*  
 Ready to use, [the product] [the wipes] are [always]

**THE INFORMATION IN THIS BOX IS NOT PART OF THE LABELING**

Statements in brackets [ ] are optional or instructional. The terms “wipe(s)”, “towel(s)”, “towelette(s)” and “cloth(s)” can be used interchangeably throughout except for the product primary brand name which can be only changed by notification or amendment. The word “and” and symbol “&” can be used interchangeably.

Recyclable [package]  
 Reduce risk of cross-contamination on treated hard, nonporous, nonfood contact surfaces  
 Reduces [packaging] waste [by x%] [when compared to regular canister or bucket or pail]  
 [Refill] package contains [one] [1] [two] [2] [three] [3] [four] [4] [various numbers] [wet] [pre-moistened] [wipe(s)] [refill(s)] [roll(s)]  
 Refill [size] [value] [pack]  
 Refillable [with \_\_\_# wipes] [dispenser] refill [pack] [for dispenser]  
 Regular [wipe] [size] or large [wipe] [size]  
 Removes allergen matter<sup>m</sup> (<sup>m</sup>pet dander, dust mite matter and pollen)  
 Removes and cleans: [*insert soils. See page 8*]  
 Removes [bacteria] [viruses\*] [germs<sup>1</sup>] [*insert organisms*]  
 Removes non-food allergens<sup>m</sup> (<sup>m</sup>pet dander, dust mite matter and pollen)  
 Removes [or Helps remove] scuffs [and spills] [tough stains]  
 Removes the grime [to give you more time] [so you can have more time]  
 Removes [the toughest] [grease] [grime] [and messes] [and eliminates] [odors] [on contact]  
 Resealable pouch [package] [container]  
 Resealable [stay-moist] pouch [inside]  
 Reuse your [empty] canisters [again [and again]] [!]  
 Sample  
 Sample [Sampling] Pack: This pack is used for sampling or product demonstration purposes only. Not for individual sale.  
 Sanitize[r] [s]  
 [Sanitize] [deodorize] hard, nonporous , nonfood contact surfaces  
 [Sanitize] [Disinfect] your hard, nonporous, nonfood contact household surfaces [including] [booster seats] [strollers] [car seats]  
 Sanitize hard, nonporous nonfood contact surfaces [Including toilet seats]  
 Sanitize hard, nonporous, nonfood contact, pre-cleaned surfaces  
 [Sanitizes] [Disinfects] hard, nonporous , nonfood contact surfaces [that people touch]  
 Sanitizes [TV] [DVD] [Video Game] remote controls  
 Satisfaction Guaranteed [or your money back]  
 Saves [steps][time]  
 [Extra Scrubbing] [Scrubbing] [household] [surface] [disinfecting] [wipes] [cleaner]  
 Scrubbing [power] [side] of a sponge in a disinfecting wipe  
 Scrub-N-Wipe[s]  
 Scrubs like no other [wipe]  
 [Significantly] [x%] less plastic than canisters  
 Soft [flexible or collapsible] packaging that's easier to store  
 Soft side for wiping [cleaning] dirt away and disinfecting  
 [So] hard, nonporous, nonfood contact [household] surfaces are more than [just] [clean] [they're] [sanitized] [and] [disinfected]  
 Specially formulated for a variety of hard, nonporous , nonfood contact surfaces [or kitchen surfaces]  
 [Specially formulated] for [daily] use [in or on] [to clean kitchen soils] [messes] such as grease♦, grime, crumbs, fingerprints  
 [Specially formulated] for [use in] the bathroom  
 Specially formulated to clean [a variety of surfaces] [throughout] [all over] [around] the house [kitchen and bathroom]  
 [Specially formulated] use daily [to clean bathroom soils such as soap, soap scum♦ toothpaste, hair spray, hair gel, cosmetics, shaving cream and hand and body lotion]  
 [Spot clean[ing]] [touch-up clean[ing]] with a [fresh] [pleasant] [nice] [good] [great] [strong] [relaxing] [pleasing] [warm] [orange] [lemon] [lavender] smell or scent  
 Starter pack [X wet mopping cloths]  
 [Strong] [absorbent] [durable] [thick] [extra-large] [larger] [tough] [wipe]  
 [Strong] [durable enough] for [tough] [messes] [jobs] [stains] [all around the house]  
 Strong, Real Cloth Wipes  
 Strong wipe[s] for tougher [jobs] [messes]  
 Super size

**THE INFORMATION IN THIS BOX IS NOT PART OF THE LABELING**

Statements in brackets [ ] are optional or instructional. The terms “wipe(s)”, “towel(s)”, “towelette(s)” and “cloth(s)” can be used interchangeably throughout except for the product primary brand name which can be only changed by notification or amendment. The word “and” and symbol “&” can be used interchangeably.



Surface Fresh  
 Sustainable Fiber  
 [Sweeper] designed by Casabella®  
 Takes up less space than bulky canisters  
 Telephone [cleaner [and] disinfectant wipes]  
 Textured [cleaning] cloths with all over scrubbing [power][fibers]  
 Textured cloths [wipes][towelettes]with [disinfecting][and][scrubbing][and][cleaning] power  
 [Textured cloth] gets up stubborn stuck on messes  
 Textured [cloths] [towelettes] clean floors faster [and easier]  
 Textured for better [cleaning] [scrubbing] power  
 Textured [scrubby] [rough [side]] [scrubbing fibers] for [scrubbing] [cleaning] [removing] [wiping] [tough] [stains] [soils] [messes]  
 Textured surface[s] [gently] scrub[s] while [you mop] [or mopping]  
 Textured/smooth wipes [or Combination Textured/smooth wipes]  
 Textured [wipe] [cloth] [towelette] [for tough jobs] [for scrubbing power]  
 The 3 minute germicidal wipe  
 The convenient way to keep your home looking “just cleaned”  
 The easy way to clean [and disinfect] [all over] [your] [the] [bathroom] [kitchen] [house] [office] [workplace]  
 The great alternative to regular mopping  
 The same formula as Sani-Cloth® [brand], the leading disinfecting wipe in hospitals‡ ‡Not for use in hospitals. [Not intended to imply heightened efficacy either alone or when compared to other products]  
 The smart [way to] clean [and disinfect] [and sanitize]  
 The uniquely designed cap with recessed reservoir enables you to keep every wipe its freshest...even the leftovers from your last pull  
 There are many uses for [product name] and here are a few: [Bathroom surfaces] [Kitchen surfaces] [Kid's or child's play] room] [family den] [Window blinds]  
 These wipes are a convenient and quick way to disinfect surfaces all around your [home] [business] [office] [workplace]  
 These [wipes] [towelettes] [cloths] will not harm [most] surfaces  
 The wipe that is [strong] [durable] [thick] [heavy] enough to scrub [and] [clean]  
 The wipe to use when you don't have much time  
 Thick wet mopping cloths for easy cleaning and disinfecting  
 This [outer] [selling][package] [container][canister] contains x% post consumer [material][plastic][resin]  
 This product contains no [phosphates] [phosphorous] [compounds]  
 [This product] is [also] great on the “go” in [add use sites]  
 3 [three] minute contact time  
 To Clean and Deodorize  
 To Go[!] [To Go] [purse] [travel] [pocket] size [pouch] [pak]  
 [Touch-up] clean[s] and disinfect[s] [and sanitize[s]]  
 Touch-ups  
 Tough enough to do the bigger cleaning jobs.  
 Tough on [messes] [and] [odor] [and] [soap scum♦] [;] [gentle on hands]  
 [Tough] [Thick] wipe(s) for tough [cleaning] [messes]  
 Towel  
 Traps & locks away [dirt] [grease♦] [messes] [crumbs] [hair] [lint] [dust] [greasy♦ messes]  
 [Travel] [portable] [pack]  
 Travel [size] [pack]  
 Trial [size] [pack] [paper towel] size [\_\_\_\_" x \_\_\_\_"]  
 Triple action  
 [Trusted by] [used by] [designed for] [professionals] [contractors] [pros]  
 Try me  
 Tub refill  
 Tub with pop-up action  
 Twin pack  
 Two in one action [cleans and disinfects [and sanitizes] in one easy step ▲]

**THE INFORMATION IN THIS BOX IS NOT PART OF THE LABELING**

Statements in brackets [ ] are optional or instructional. The terms “wipe(s)”, “towel(s)”, “towelette(s)” and “cloth(s)” can be used interchangeably throughout except for the product primary brand name which can be only changed by notification or amendment. The word “and” and symbol “&” can be used interchangeably.



Two-in-one wipe

Uses [X] [%] [percent] less plastic than [previous] [similar count] canisters

Use by *[insert date]*

Use [daily] to clean bathroom [messes] like [soap] [soap scum] [toothpaste] [hair spray] [hair gel]

Use every day in every room [throughout the house]

Use everywhere or anywhere on hard, nonporous, nonfood contact surfaces

Use [in] [on] [public toilet seats] [Laundromats] [camp sites] [cleaning pet areas] [hotels] [motels] [lodging] [grocery] [carts and baskets]

Use in [public] places where germs<sup>1</sup> [or bacteria] may be of concern

Use on hard, nonporous, nonfood contact surfaces anywhere [you travel] [throughout the house]

Use on hard, nonporous, nonfood contact surfaces only: [stainless steel] [Formica®] [glass] [glass tables] [glazed tile]

[Test wipe on small inconspicuous area first.]

Use on hard, nonporous kitchen and bathroom floors

[Use the product or the wipes] for [light] touch-up [every day] [daily] [quick cleaning] [clean-ups] [all over the house] [anytime] [anywhere]

Use [the product] [the wipe[s]] throughout the house

Use them *[insert use sites]* [where [bacteria] [viruses\*] [germs<sup>1</sup>] are a concern.]

Use them [on kitchen counters] before and after cooking [to kill] [common] [bacteria] [viruses\*] [germs<sup>1</sup>]

Use to clean, deodorize, and disinfect hard, nonporous surfaces in the nursery

Use to disinfect hotel room remote controls

Use to disinfect [hard, nonporous, nonfood contact [kitchen] surfaces] [before] [after] [cooking] [preparing] [meals] [dinner]

Use to disinfect [sanitize] hard, nonporous, nonfood contact surfaces [that people touch]

Use to disinfect shopping [grocery] cart handles and shopping [grocery] cart child seats

[Use to] refill[s] [count] [wipe] canisters or tubs

Use to sanitize hard, nonporous, nonfood contact surfaces

Use wipes to kill Influenza A/Hong Kong on bathroom and kitchen hard, nonporous, nonfood contact surfaces

Use wipes [to kill *[list organisms]*] on bathroom and kitchen hard, nonporous, nonfood contact surfaces

[Value Pack] [Value size] [Value twin]

Versatile [disinfectant [or disinfecting] cleaner]

Virtually [Lint Free] [streak free] [clean] [shine]

Virucidal\* [Kills viruses\*] \*Kills Influenza A/Hong Kong (Hong Kong flu virus)

Virus\* killing household cleaner

Wet disinfecting [antibacterial] [floor] [mopping] cloths [with scrubbing fibers]

Wet [floor] [mopping] cloths with power (*tag line*)

Wet [household and/or disinfecting] wipes

Wet wipes [\_\_\_" x \_\_\_"]

Will not leave grit or soap scum

Will not [scratch] [harm] most surfaces

Wipes [or *Brand Name* wipes] [are] [large] [big enough] for all your cleaning needs [or messes] [including] [floors]

Wipe away the flu virus\* [this season] (\*Influenza A/Hong Kong)

Wipe away [Wipes out] odors

Wipe down commonly touched hard, nonporous, nonfood contact surfaces [around the kitchen] including *[insert use surfaces]* [bacteria] [viruses\*] [germ<sup>1</sup>] [throughout the house]

Wipe down shopping [grocery] cart handles and child seats

Wipe [material] made from [x] % [sustainable] [ingredients] [fibers] [*May be used only when cellulose wipe material used*]

Wipe that disinfects [or sanitizes] [while it cleans up] [stubborn] [stuck-on] [messes]

Wipes [X%] [made] [derived] from [X%] recycled [post consumer] plastic [water] bottles

[Wipe[s]] [material] [X%] [made] [derived] from trees grown [using] [in] [sustainable] [renewable] [managed] [forests] [forestry] [farming] [practices]

Wipe[s] [material] made from [x] % [sustainable] [and] [renewable] [wood pulp] [plant based] [ingredients] [fibers]

Wipe[s] [material] made from trees grown using [sustainable] [renewable] [managed forestry] [farming] [practices]

Wipes out 99.9% of common household germs<sup>1</sup> [microbes] [or bacteria]

Wipes out 99.9% of germs<sup>1</sup> [or bacteria] that commonly infect your home

#### **THE INFORMATION IN THIS BOX IS NOT PART OF THE LABELING**

Statements in brackets [ ] are optional or instructional. The terms “wipe(s)”, “towel(s)”, “towelette(s)” and “cloth(s)” can be used interchangeably throughout except for the product primary brand name which can be only changed by notification or amendment. The word “and” and symbol “&” can be used interchangeably.

Wipes out a common flu virus\* (\*Influenza A/Hong Kong) [flu-causing virus\* (\*Influenza A/Hong Kong)]  
 [Wipes out] [Kills] 99.9% of [common] [household] [bacteria] [viruses\*] [germs<sup>1</sup>]  
 [Wipes out] [Kills] 99.9% of viruses\* and bacteria [including the flu virus\* (\*Influenza A/Hong Kong)]  
 [Wipes out] [Kills] [eliminates] 99.9% of [list organisms] in [just] [3 minutes]  
 [Wipes out] [Kills] germs<sup>1</sup> [or bacteria] [while it cleans] [that cause odor]  
 [Wipes out] [Kills] [the] flu virus\* (\*Influenza A/Hong Kong)  
 Wiping [smooth] [soft side] for cleaning dirt away and disinfecting  
 [With a] [fresh] [clean] [citrus] [lemon] fragrance  
 With a pleasant fragrance  
 With [Extra] cleaning [or scrubbing] power  
 Works [great] on [shiny] [high gloss] [high shine] surfaces [like stainless]  
 Worry free [disinfecting] [sanitizing] [cleaning]  
 [Wow] scrubs like a sponge  
 X" x Y"  
 [X%] more wipes [free] [[vs. {count} wipe [canister] [package]]  
 X% [more] [wipes] [free] [vs. Z count] [canisters] [packs]  
 X% reduction in packaging [material]  
 [X%] stronger wipe than [standard] 7 x 8 in [disinfecting] wipe  
 [#X] [X%] stronger<sup>†</sup> (Compared to a wet paper towel)

**[15 second sanitization claims:]** [Link (with symbol or footnote) all 15 second claims to one or more bacteria listed below or list bacteria next to claim]

15 second sanitization  
 15 seconds is all it takes to kill 99.9% of bacteria  
 Effective in 15 seconds against the following every time you wipe:  
 [Common] household [kitchen] [bathroom] bacteria  
 Odor causing bacteria  
*Escherichia coli (E. coli)*, *Klebsiella pneumoniae*, *Pseudomonas aeruginosa*, *Staphylococcus aureus*  
 (Staph), and *Salmonella enterica (Salmonella)* [bacteria that cause food-borne illnesses]  
 Kills [99.9% of] [common household] bacteria in 15 seconds [Effect against *Escherichia coli (E. coli)*, *Salmonella enterica (Salmonella)*, *Staphylococcus aureus* (Staph), and *Pseudomonas aeruginosa*.]  
 [Kill[s] [99.9% of] [effective against] [bacteria [Salmonella]] [that cause odor] [that cause scum and slime on hard, nonporous , nonfood contact surfaces] in just] 15 seconds  
 Kill[s] 99.9% of [remove[s]] [effective against] [odor causing] [common] [household] [kitchen and/or bathroom bacteria] in 15 seconds  
 Kills 99.9% of bacteria\*\* in 15 seconds. \*\*Effect against *Escherichia coli (E. coli)*, *Salmonella enterica (Salmonella)*, *Staphylococcus aureus* (Staph), and *Pseudomonas aeruginosa*.  
 Sanitizes [household] [bathroom] [hard, nonporous , nonfood contact surfaces] [in just 15 seconds]  
 Sanitizes in [just] 15 seconds  
 [Wipes out] [Kills] bacteria in [just] [15] seconds

[insert product name] or [This product] cleans, deodorizes, and disinfects common hard, nonporous , nonfood contact indoor and outdoor surfaces. These pre-moistened, [insert scent from list above] wipes contain scrubbing fibers for effective everyday cleaning and for tough stains, such as soap scum♦ and baked-on grease♦. Effective in 3 minutes against *Staphylococcus aureus*, *Salmonella enterica*, *Klebsiella pneumoniae*, *Escherichia coli* and *Pseudomonas aeruginosa*. Effective against flu virus\* \*Influenza A/Hong Kong.

Pre-moistened [pre-soaked or pre-sprayed or pre-wetted] towels are effective for everyday cleaning, deodorizing and disinfecting. Effective in 3 minutes against *Staphylococcus aureus*, *Salmonella enterica*, *Klebsiella pneumoniae*, *Escherichia coli* and *Pseudomonas aeruginosa*. Kills Influenza A/Hong Kong. Cleans and disinfects common hard, nonporous , nonfood contact surfaces. General use: Kitchen and bathroom surfaces, doorknobs, telephones, cribs and toys.

**THE INFORMATION IN THIS BOX IS NOT PART OF THE LABELING**

Statements in brackets [ ] are optional or instructional. The terms “wipe(s)”, “towel(s)”, “towelette(s)” and “cloth(s)” can be used interchangeably throughout except for the product primary brand name which can be only changed by notification or amendment. The word “and” and symbol “&” can be used interchangeably.

[Note: The following claims can be used only for 6 months]

[Better] [New] [Improved] [Stronger] [Thicker] Wipe [!]  
[Better] [new] [&] [improved] [dispensing] lid [closure] [cap] [package] [dispensing] [better [than before]  
Cleans better than [before] [ever]  
Extra Convenient  
[Improved] [better] [cleaning] [wipes] [with] [criss-cross] [ridges]  
[Improved] [more] [better] [cleaning] [power] [performance]  
Introducing  
More towels  
More Wipes [count]  
New Eco-Pak [Package] [Packaging] [Benefits]  
[New] [thick] [textured] [wipe] [tougher] [thicker] wipe for tougher cleaning  
New [and Improved] [Look]  
[New] [Now] [Low-streak] [-residue] [formula] [Wipe] [Delivers] [A] Clean you can [see]  
[New] Easy [Start Lid] [Start Package] [Convenient] [Eco-Pak] [Package] [Packaging] [to store packaging]  
New larger [bigger]-sized wipe  
New larger size [New] [now] [even] stronger [wipe[s]] [a] [better wipe[s]]  
New, [number] [% larger towels than before] [use this for 6 months after converting to larger towel]  
New [package] [packaging] same great wipe  
[New] [Package] [packaging] uses [x%] less material (plastic) [then] [when compared to] [regular] containers [or  
canisters]  
New top  
Now available [Now] [In] [a] [Decorative Pack] [Designer Pak]  
[Now] \_\_\_% stronger  
[Now] 2x [2.5x] [3x] [4x] [5x] stronger  
Now cleaning is [faster] [easier] than [ever] [before]  
[Now] cleans better on grease♦  
[Now] Dispenses easier [than ever][!]  
[Now] [even] [more durable] [stronger] [softer] [wipes] [than] [before] [ever]  
Now in [insert number] scent(s), [insert scent(s)]  
[Now] [number of wipes] [even] [more] wipes  
[Now] [Reinforced] [With] Quilted [strength]  
[Now] Streak Free[!]  
[Now] [with] [criss-cross] [raised] [ridges] [V-shaped] [pattern] [for] [better] [improved] [cleaning] [performance] [power]  
  
Now with [number to be inserted] extra towels  
[Now with] quilted wipe  
[Now] [x times] the [grease♦] cleaning power  
Same Fast Powerful Cleaning  
Sani-Cloth® has a new look!  
[Scrubs] (&) [cleans] [better than ever]  
[Stronger] more durable [wipe]  
Thick[er] [wipe] [with] cloth-like texture  
[Wipes] stay[s] wet [moist] longer  
X% [Bigger] [larger] [quilted] wipes  
[x%] more grease♦ [cleaning] [cutting] power  
[x%] thicker wipes

**THE INFORMATION IN THIS BOX IS NOT PART OF THE LABELING**

Statements in brackets [ ] are optional or instructional. The terms “wipe(s)”, “towel(s)”, “towelette(s)” and “cloth(s)” can be used interchangeably throughout except for the product primary brand name which can be only changed by notification or amendment. The word “and” and symbol “&” can be used interchangeably.

## GRAPHICS

[The following graphics and statements are optional.]

[They may be placed anywhere on label/container.]

[They are used to show examples of places the product can be used.]



NOT FOR USE ON SKIN

NOT FOR CLEANING OR SANITIZING SKIN

NOT A BABY WIPE

FOR USE ON HARD, NONPOROUS, NONFOOD CONTACT SURFACES ONLY



Not a Skin Wipe. For Use on Hard, Nonporous  
Nonfood Contact Surfaces Only.



Not a Skin Wipe. For Use on Hard, Nonporous  
Nonfood Contact Surfaces Only.

### **THE INFORMATION IN THIS BOX IS NOT PART OF THE LABELING**

Statements in brackets [ ] are optional or instructional. The terms “wipe(s)”, “towel(s)”, “towelette(s)” and “cloth(s)” can be used interchangeably throughout except for the product primary brand name which can be only changed by notification or amendment. The word “and” and symbol “&” can be used interchangeably.



NOT A Baby Wipe

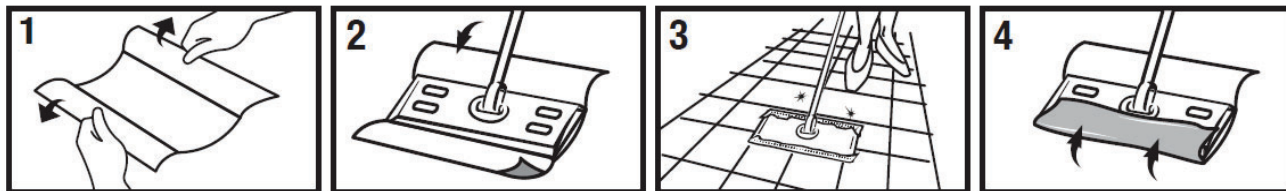


Telephone

• USE OF WIPE DISPENSER



[One side scrubs] [One side wipes]

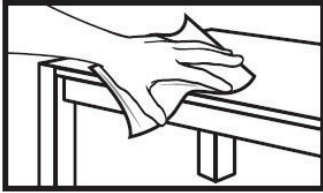


**THE INFORMATION IN THIS BOX IS NOT PART OF THE LABELING**

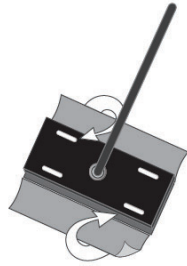
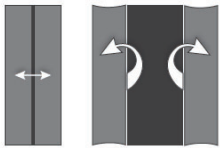
Statements in brackets [ ] are optional or instructional. The terms “wipe(s)”, “towel(s)”, “towelette(s)” and “cloth(s)” can be used interchangeably throughout except for the product primary brand name which can be only changed by notification or amendment. The word “and” and symbol “&” can be used interchangeably.



• WIPE USAGE

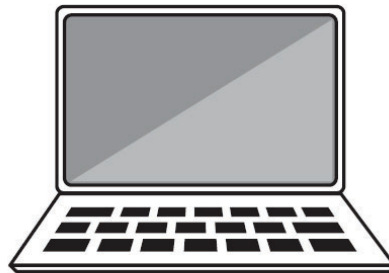
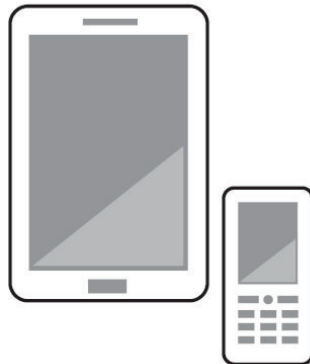


For cleaning [and/or] [spot cleaning] only



**FINISHED FLOORS**

• COMPUTER AND KEY BOARD, LAPTOP, SMART PHONE AND TABLET



**THE INFORMATION IN THIS BOX IS NOT PART OF THE LABELING**

Statements in brackets [ ] are optional or instructional. The terms “wipe(s)”, “towel(s)”, “towelette(s)” and “cloth(s)” can be used interchangeably throughout except for the product primary brand name which can be only changed by notification or amendment. The word “and” and symbol “&” can be used interchangeably.





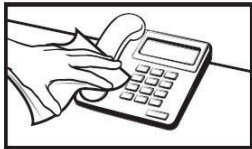
Mouse & Keyboard



Desktop



Office



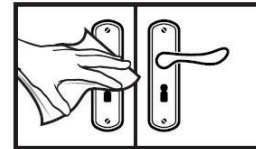
• TELEPHONES



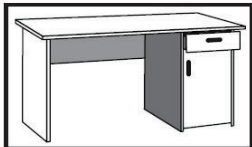
• KEYBOARDS & MOUSE



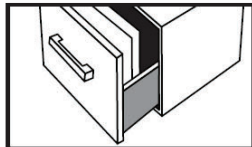
• DESKTOP



• DOOR HANDLES



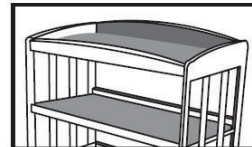
• DESKTOP



• OFFICE



• FAUCET



• CHANGING TABLE



Faucet



Changing Table



Door Handles



OFFICE

**THE INFORMATION IN THIS BOX IS NOT PART OF THE LABELING**

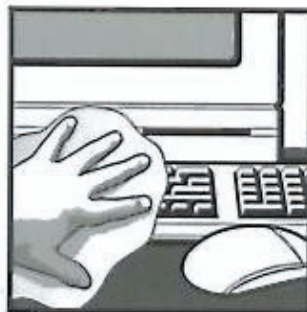
Statements in brackets [ ] are optional or instructional. The terms “wipe(s)”, “towel(s)”, “towelette(s)” and “cloth(s)” can be used interchangeably throughout except for the product primary brand name which can be only changed by notification or amendment. The word “and” and symbol “&” can be used interchangeably.



**Door Handles**



**Telephones**



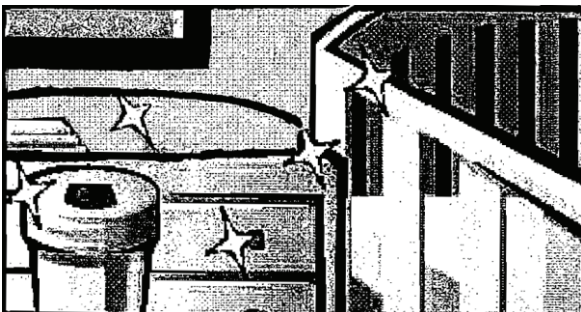
**Keyboards and Mouse**



**Desktop**

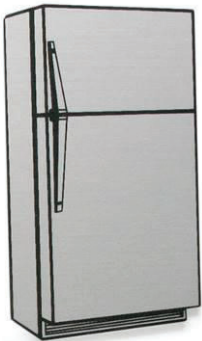
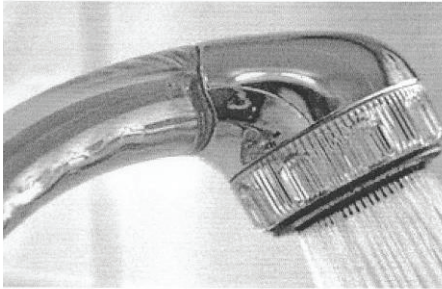


*[Graphic above to be used only when "glazed tile" is listed on label use sites.]*



**THE INFORMATION IN THIS BOX IS NOT PART OF THE LABELING**

Statements in brackets [ ] are optional or instructional. The terms "wipe(s)", "towel(s)", "towelette(s)" and "cloth(s)" can be used interchangeably throughout except for the product primary brand name which can be only changed by notification or amendment. The word "and" and symbol "&" can be used interchangeably.



**THE INFORMATION IN THIS BOX IS NOT PART OF THE LABELING**

Statements in brackets [ ] are optional or instructional. The terms “wipe(s)”, “towel(s)”, “towelette(s)” and “cloth(s)” can be used interchangeably throughout except for the product primary brand name which can be only changed by notification or amendment. The word “and” and symbol “&” can be used interchangeably.





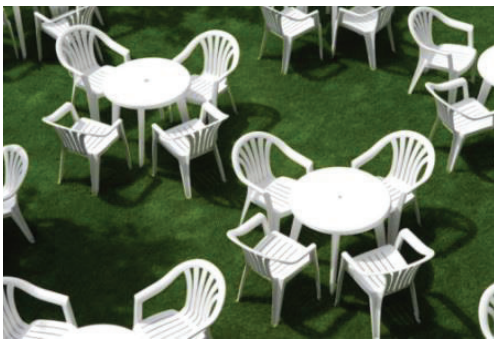
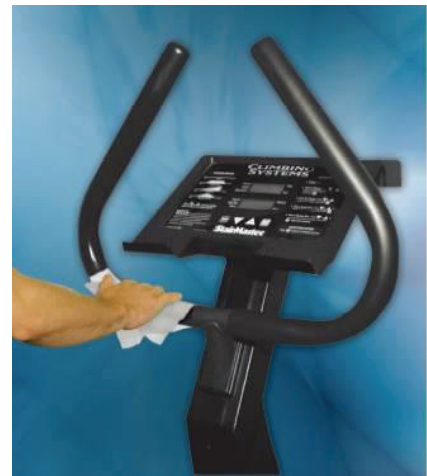
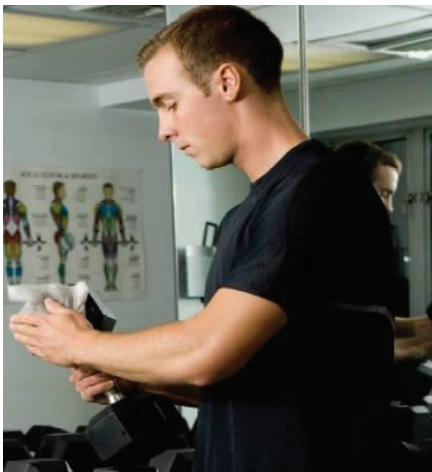
**GYM**



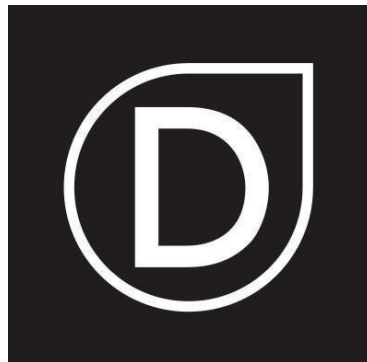
**SHOPPING  
CARTS**



**TABLES**



Lawn Furniture



D= Disinfecting

**THE INFORMATION IN THIS BOX IS NOT PART OF THE LABELING**

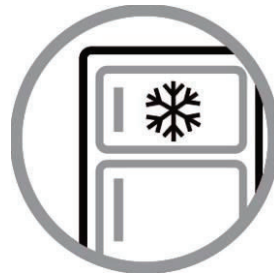
Statements in brackets [ ] are optional or instructional. The terms “wipe(s)”, “towel(s)”, “towelette(s)” and “cloth(s)” can be used interchangeably throughout except for the product primary brand name which can be only changed by notification or amendment. The word “and” and symbol “&” can be used interchangeably.



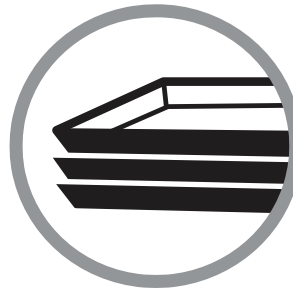
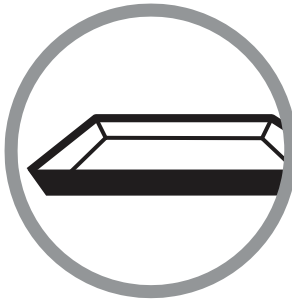
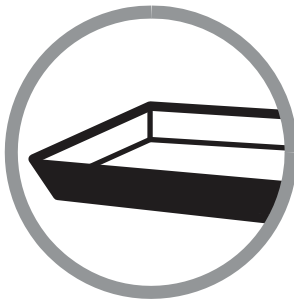
Counter Tops <sup>Δ</sup>



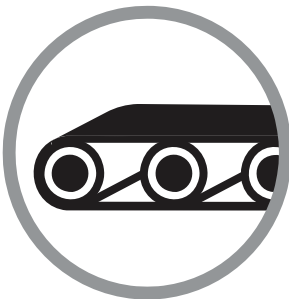
Counters <sup>Δ</sup>



Refrigeration, Freezer Units <sup>Δ</sup>



Cafeteria Trays<sup>Δ</sup>, OR  
[Hospital Meal Trays<sup>Δ</sup>,] OR  
[Airline Tray Tables<sup>Δ</sup>,] OR  
[Pill Trays<sup>Δ</sup>]



Conveyor Belt



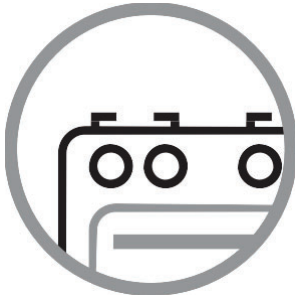
Food Carts <sup>Δ</sup>



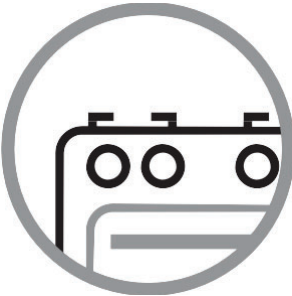
Chairs/Tables <sup>Δ</sup>

**THE INFORMATION IN THIS BOX IS NOT PART OF THE LABELING**

Statements in brackets [ ] are optional or instructional. The terms “wipe(s)”, “towel(s)”, “towelette(s)” and “cloth(s)” can be used interchangeably throughout except for the product primary brand name which can be only changed by notification or amendment. The word “and” and symbol “&” can be used interchangeably.



A



B

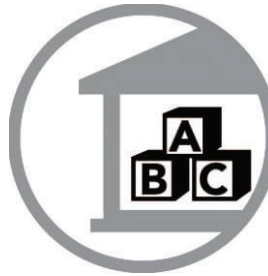
Stoves<sup>Δ</sup>



Waitress Stations



Airplanes/Airports



Daycare Settings



Hotels/Motels



Cruise Ships



Nurseries



Nursing homes



Schools



**THE INFORMATION IN THIS BOX IS NOT PART OF THE LABELING**

Statements in brackets [ ] are optional or instructional. The terms “wipe(s)”, “towel(s)”, “towelette(s)” and “cloth(s)” can be used interchangeably throughout except for the product primary brand name which can be only changed by notification or amendment. The word “and” and symbol “&” can be used interchangeably.





Grocery <sup>Δ</sup>



Casinos



Healthcare



Convenience Stores <sup>Δ</sup>



Fitness



<sup>Δ</sup> Not for food contact

**THE INFORMATION IN THIS BOX IS NOT PART OF THE LABELING**

Statements in brackets [ ] are optional or instructional. The terms “wipe(s)”, “towel(s)”, “towelette(s)” and “cloth(s)” can be used interchangeably throughout except for the product primary brand name which can be only changed by notification or amendment. The word “and” and symbol “&” can be used interchangeably.

[The following are company logos for use on PDI product labels. The purpose of the logo is for easy recognition of PDI products in the marketplace.]



[The graphics below will be used as bullets with EPA approved optional claims]



Distributed by Staples®

The Staples® brand 100% Satisfaction Guarantee

If you're not 100% happy with this Staples® brand product, just return it anytime. It's that easy.

[Graphics]



[Graphics]



[Graphics]



[Cloth] [Towel] [Towelette] [Wipe][Made with] Tencel®

[Tencel® is a registered trademark of Lenzing AG.]



Every Kirkland Signature product is guaranteed to meet or exceed the quality standards of the leading national brands. If you're not completely satisfied, your money will be refunded.

TOTAL HOME®

It's where performance and value live.

TOTAL HOME®

Offers a wide selection of household products that work hard and save your money.

**THE INFORMATION IN THIS BOX IS NOT PART OF THE LABELING**

Statements in brackets [ ] are optional or instructional. The terms "wipe(s)", "towel(s)", "towelette(s)" and "cloth(s)" can be used interchangeably throughout except for the product primary brand name which can be only changed by notification or amendment. The word "and" and symbol "&" can be used interchangeably.



**THE INFORMATION IN THIS BOX IS NOT PART OF THE LABELING**

Statements in brackets [ ] are optional or instructional. The terms “wipe(s)”, “towel(s)”, “towelette(s)” and “cloth(s)” can be used interchangeably throughout except for the product primary brand name which can be only changed by notification or amendment. The word “and” and symbol “&” can be used interchangeably.



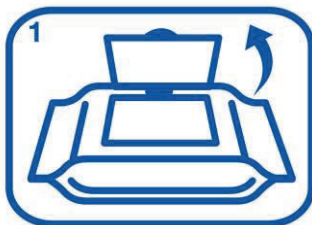
**ECO SOFT PACK**



**DUAL  
SCRUBBING ACTION**

## **KILLS COLD & FLU VIRUS\***

**✓ E. COLI ✓ SALMONELLA ✓ STAPH  
✓ STREP ✓ MRSA ✓ LISTERIA**



**THE INFORMATION IN THIS BOX IS NOT PART OF THE LABELING**

Statements in brackets [ ] are optional or instructional. The terms “wipe(s)”, “towel(s)”, “towelette(s)” and “cloth(s)” can be used interchangeably throughout except for the product primary brand name which can be only changed by notification or amendment. The word “and” and symbol “&” can be used interchangeably.



LEARN MORE AT  
[BerkleyJensen.com](http://BerkleyJensen.com)

Every Berkley Jensen product comes with our **100% Money-Back Guarantee**. It's just one of the many ways a BJ's membership gives you MORE.



**THE INFORMATION IN THIS BOX IS NOT PART OF THE LABELING**

Statements in brackets [ ] are optional or instructional. The terms "wipe(s)", "towel(s)", "towelette(s)" and "cloth(s)" can be used interchangeably throughout except for the product primary brand name which can be only changed by notification or amendment. The word "and" and symbol "&" can be used interchangeably.



SMART VALUES™



Great Value



**THE INFORMATION IN THIS BOX IS NOT PART OF THE LABELING**

Statements in brackets [ ] are optional or instructional. The terms "wipe(s)", "towel(s)", "towelette(s)" and "cloth(s)" can be used interchangeably throughout except for the product primary brand name which can be only changed by notification or amendment. The word "and" and symbol "&" can be used interchangeably.