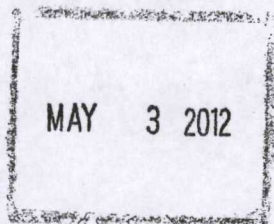


UNITED STATES ENVIRONMENTAL PROTECTION AGENCY



Cristina Griffin
Agent for Professional Disposables International, Inc. (PDI)
Delta Analytical Corporation
12510 Prosperity Drive, Suite 160
Silver Spring, MD 20904

Subject: Sani-Cloth Germicidal Wipes Germicidal Disposable Cloth
EPA Registration No. 9480-4
Amendment Date: November 17, 2011
EPA Receipt Date: November 17, 2011

Dear Ms. Griffin,

The following amendment, submitted in connection with registration under the Federal Insecticide, Fungicide, and Rodenticide Act (FIFRA), section 3(C)(7)(A) is acceptable with the conditions below.

Proposed Amendment

- Labeling changes
Submission of Toxicity Data
Revision of Confidential Statements of Formula

Conditions

Revise the label as follows:

- 1) Revise page 6 by correcting the two occurrences of Influenza A/Hong Kong to state Influenza A2/Hong Kong as per the last stamped label.
2) Delete the following two statements from page 7: "Some organisms are removed from the surface by thoroughly wiping the surface with the wipe. Most remaining organisms are killed within 2 minutes by exposure to the liquid in the wipe." The contact time, as demonstrated by the submitted efficacy data, is strict. The label

CONCURRENCES

Table with 7 columns and 3 rows. Rows are labeled SYMBOL, SURNAME, and DATE. Handwritten entries include 7510P, Stealy, and 5/3/12.

must reflect this contact time. The statement "Some organisms are removed from the surface by thoroughly wiping the surface with the wipe" is inconsistent and conflicts with the contact time submitted to support the public health organisms. While the statement "Most remaining organisms are killed within 2 minutes by exposure to the liquid in the wipe" is too ambiguous and implies that the wipe can be used against any and all public health organisms, even those not claimed on the proposed label.

- 3) Revise the following two statements on page 8. Revise "Compatible for use on hard, nonporous surfaces commonly found in healthcare settings" to end as follows: "*listed on this label.*" Broad comparative claims are unacceptable. You may only compare your product with other products manufactured by your own company. Thus revise the statement which follows to read: "Contains [name of active ingredient], the [same] active ingredient used in [Brand-name of another PDI product]."
- 4) Revise the statement at the bottom of page 12 by deleting the brackets surrounding the phrase "non porous". This product is only for use on hard non porous surfaces, thus the statement is: "For use on hard non porous surfaces only".
- 5) Revise the Personal Protection and Disposal sections of the HIV/HBV/HCV directions to read as follows:
 "Personal Protection: When using this product, wear disposable protective gloves, protective gowns, masks and eye coverings when handling..."
 "Disposal of Infectious Materials: Used wipe, blood and other body fluids should be disposed of according to local regulation for infectious waste disposal."

Toxicity Data

The following data may be used to support this product. The review of this data is attached.

Data Requirement	Means of Support	Status
Acute Dermal Toxicity	Submitted study, MRID 48660801	Acceptable, Toxicity Category IV

Please see Confidential Attachment for additional conditions and comments associated with this submission.

CONCURRENCES

SYMBOL							
SURNAME							
DATE							

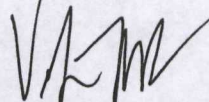
General Comments

A stamped copy of the accepted labeling with conditions is enclosed. Submit 1 copy of your final printed label before distributing or selling the product bearing the revised labeling.

If the above conditions are not complied with, the registration will be subject to cancellation in accordance with FIFRA section 6 (e). Your release for shipment of the product bearing the amended labeling constitutes acceptance of these conditions.

Should you have any questions concerning this letter, please contact Tracy Lantz at (703) 308-6415 or Velma Noble at (703) 308-6233.

Sincerely,



Velma Noble
Product Manager (31)
Regulatory Management Branch I
Antimicrobials Division (7510P)

Enclosures: Stamped Label, Confidential Attachment,
DERs D396552, D396553, D396554

7510P:T.Lantz:4/30/2012:9480-4 relying on new data

CONCURRENCES

SYMBOL							
SURNAME							
DATE							

4/16

SANI-CLOTH® GERMICIDAL WIPES GERMICIDAL DISPOSABLE CLOTH

ACTIVE INGREDIENTS:

n-Alkyl (68% C ₁₂ , 32% C ₁₄) dimethyl ethylbenzyl ammonium chlorides.....	0.25%
n-Alkyl (60% C ₁₄ , 30% C ₁₆ , 5% C ₁₂ , 5% C ₁₈) dimethyl benzyl ammonium chlorides.....	0.25%
OTHER INGREDIENTS	99.50%
TOTAL	100.00%

[Does not include the weight of the [cloth] [towelette] [or] [wipe]]

KEEP OUT OF REACH OF CHILDREN
DANGER

See back [side] panel for additional precautionary statements

NET CONTENTS [and/or Net Wt.] _____ oz (g) [or lbs. (kg)]

____ # OF CLOTHS [SIZE of each cloth]

EPA Reg. No.: 9480-4

EPA Est. No. : 9480-NY-1

or

EPA Est. No. A=9480-NY-1, B=72956-WI-1, C=72956-AR-1 [or others]

Alpha character will precede batch code on product

[Manufactured by [or for]]:
Professional Disposables International, Inc.
Two Nice-Pak Park, Orangeburg, NY 10962-1376
[For information call: [phone number to be inserted]]
[Made in USA]

First Aid:

Call a poison control center or doctor for treatment advice. Have the product container or label with you when calling a poison control center or doctor, or going for treatment

If in eyes:

-Hold eye open and rinse slowly and gently with water for 15-20 minutes. Remove contact lenses, if present, after the first 5 minutes, then continue rinsing.

If on skin:

-Take off contaminated clothing.

-Rinse skin immediately with plenty of water for 15-20 minutes.

[For additional information in case of emergency call toll free [phone number to be inserted]].

**ACCEPTED
with COMMENTS
in EPA Letter Dated:**

MAY 3 2012

Under the Federal Insecticide,
Fungicide, and Rodenticide Act as
amended, for the pesticide,
registered under EPA Reg No 9480-4

The terms "wipe(s)", "towel(s)", "towelette(s)", and "cloth(s)" and the product name may be used interchangeably except for within the product primary brand name.

Precautionary Statements

Hazards to Humans and Domestic Animals

Danger. Causes irreversible eye damage. Do not get in eyes or on clothing. Avoid contact with skin. Wash thoroughly with soap and water after handling and before eating, drinking, chewing gum, using tobacco, or using restroom. Remove and wash contaminated clothing before reuse.

Physical or chemical hazard

Combustible. Do not use or store near heat or open flame. Do not use on natural marble, windows, unpainted wood, brass, clear plastic or colored grout.

[Use one of the following as applicable to type of container:]

[To Dispense TOWELETTES] [or WIPES] [or TOWELS] [or CLOTHS]:

Remove lid [and discard inner seal] [from container or canister.] Find center of wipe roll, remove first wipe for use, twist corner of next wipe into a point and thread through the hole in the [container or] canister lid. Pull through about one inch. Replace lid. Dispense remaining wipes as necessary by pulling out at an angle. When not in use keep [center cap of] lid closed to prevent moisture loss.

TRAVEL PACK:

Peel back label slowly. Pull out wipes as needed and reseal label. Unfold wipe.

BOX:

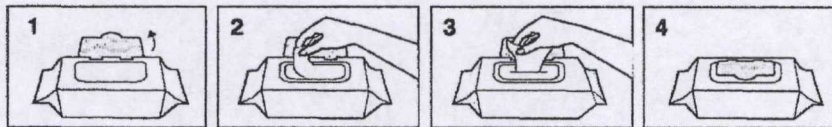
Open along perforations as indicated. Remove packets as needed.

PACKET/PACKAGE:

Tear open packet [package]. Unfold wipe and use as directed. Discard after single use.

SOLO® PAK:

Open package lid. Completely remove inner seal. Pull out wipe. (The next wipe pops up automatically.) Snap lid closed after use to retain moisture.



DO NOT FLUSH • STORE AT ROOM TEMPERATURE
DISPOSE OF USED WIPES IN TRASH RECEPTACLE • KEEP SOLO®
LID CLOSED WHEN NOT IN USE
SOLO® is a registered trademark of Nice-Pak Products, Inc.

REFILL PACKET

This refill package is made for use only in a [product name] [container or] canister; do not use this product in a [container or] canister for another product. Do not use the refill wipes in a container that is cracked or broken. Discard the cracked or broken container in accordance with the container disposal instructions on the label.

[Option 1]

Remove [entire] lid from [container or] canister. Tear open refill [package] at [notch] [mark] [arrow] and place [wipe] roll in empty [container or] canister. Follow information on [container or] canister to dispense wipes.

[Option 2]

Remove [entire] lid from [container or] canister. Tear open refill [package] at [notch] [mark] [arrow]. Place [entire] refill package of wipes in empty [container or] canister. Follow information on [container or] canister to dispense wipes.

ACCEPTED
COMMENTS
in EPA Letter Dated:
MAY 3 2012
Fungicide, and Rodenticide Act as
amended, for the pesticide,
registered under EPA Reg. No. 9480-4

The terms "wipe(s)", "towel(s)", "towelette(s)", and "cloth(s)" and the product name may be used interchangeably except for within the product primary brand name.

GENERIC:

Open lid. Pull out wipe. Close lid tightly.

Bucket [or pail or container]

1. Remove the lid from the [pail or bucket or container.]
2. Press open the dispenser at center of the lid.
3. Open the refill pack.
4. Locate the first wipe at the center of the roll.
5. Feed the first wipe through the dispensing orifice.
6. Reapply the lid to the [pail or bucket or container.]
7. Dispense the wipe.

For the refills:

1. Remove the lid from the [pail or bucket or container.]
2. Remove the empty refill pack material from the [pail or bucket or container.]
3. Press open the dispenser at center of the lid.
4. Open the refill pack.
5. Locate the first wipe at the center of the roll.
6. Feed the first wipe through the dispensing orifice.
7. Reapply the lid to the pail.
8. Dispense the wipe.

DIRECTIONS FOR USE

It is a violation of Federal law to use this product in a manner inconsistent with its labeling.

TO DISINFECT [AND DEODORIZE]: To disinfect nonfood contact surfaces only: Use a wipe to remove heavy soil. Unfold a clean wipe and thoroughly wet surface. Treated surface must remain visibly wet for a full two (2) minutes. Use additional wipe(s) if needed to assure continuous two (2) minute wet contact time. Let air dry. [When TB is included on the label, add the following or use the TB directions below:] These directions also apply to *Mycobacterium bovis* BCG (Tuberculosis) at 68°F (20°C).

[The following sets of directions are optional and for hospital/medical facility use only:

Tuberculosis (TB) [Outbreaks]: This product is effective against *Mycobacterium bovis* BCG (Tuberculosis) in one minute at 68°F (20°C). Use a wipe to remove heavy soil. Unfold a clean wipe and thoroughly wet surface. Treated surface must remain visibly wet for one (1) full minute. Use additional wipe(s) if needed to assure continuous one (1) minute wet contact time. Let air dry. Although efficacy at a one (1) minute contact time has been shown to be adequate against TB, this time is not sufficient for other organisms on the label. Therefore a 2 minute wet contact time must be used for all listed non TB organisms.

and/or

Ultrasound transducers and probes: For use on external surfaces of ultrasound transducers and probes only. To disinfect: Pre-clean gel from external surface of ultrasound transducer or probe to be disinfected by using a clean washcloth. Then thoroughly wet the probe with a wipe. Treated surface must remain visibly wet for a full two (2) minutes. Use additional wipe(s) if needed to assure continuous two (2) minute wet contact time. Let air dry.]

†SPECIAL INSTRUCTIONS FOR CLEANING AND DECONTAMINATION AGAINST HIV-1, HEPATITIS B VIRUS (HBV) AND HEPATITIS C VIRUS (HCV) OF SURFACES/OBJECTS SOILED WITH BLOOD/BODY FLUIDS

Personal protection: When using this product, wear disposable protective gloves, protective gowns, face masks, or eye coverings as appropriate when handling HIV-1 (AIDS Virus), HBV or HCV infected blood or body fluids.

Cleaning procedure: All blood and other body fluids must be thoroughly cleaned from surfaces and objects before disinfection by the germicidal wipe. Open, unfold and use first germicidal wipe to remove heavy soil.

Disposal of infectious materials: Dispose of used wipe in accordance with local regulations for infectious waste disposal.

Contact time: Use second germicidal wipe to thoroughly wet surface. Allow to remain wet two (2) minutes and dry.

ACCEPTED
with COMMENTS
in EPA Letter Dated:
MAY 3 2012

The terms "wipe(s)", "towel(s)", "towelette(s)", and "cloth(s)" and the product name may be used interchangeably, except for amended, for the pesticide, registered under EPA Reg. No. 9480

Under the Federal Insecticide, Fungicide, and Rodenticide Act as amended, for the pesticide, registered under EPA Reg. No. 9480

[Use storage/disposal statement A if canister, tub, bucket, pail or refill dispenser directions used. Use storage/disposal statement B if travel pack, Solo® Pak, soft pack, pouch, or [refill or [bulk]] packet/package] directions used.]

STORAGE AND DISPOSAL

Do not contaminate water, food, or feed by storage and disposal. [Statement not required for residential or household use products.]

[Statement A:]

Storage: Do not store near heat or open flame. When not in use keep center cap of lid closed to prevent moisture loss. **Towelette Disposal:** Do not reuse towelette. Dispose of used towelette in trash. Do not flush in toilet. **Dispenser [or Container] Disposal:** Nonrefillable container. Do not reuse or refill this container. Triple rinse and offer for recycling. If recycling is not available, put in trash collection. [If refillable dispenser is being used, substitute the following: **Refill Dispenser [or Container] Disposal:** Triple rinse cracked or broken containers and offer for recycling. If recycling is not available, discard in trash.]

[Statement B:]

Storage: Do not store near heat or open flame. **Towelette Disposal:** Do not reuse towelette. Dispose of used towelette in trash. Do not flush in toilet. **Dispenser [or Container] Disposal:** Put empty travel pack [or Solo® Pak or [refill] packet [or packaging]] in trash collection.

Areas of Use:

Hospital and Healthcare Settings: Ambulances, Ambulatory Surgical Centers (ASC), Anesthesia, CAT Labs, CCU, Central Supply, Clinics, Dental Offices, Dialysis Clinics, Doctors Offices, Donation Centers [blood][plasma][semen][milk][apheresis], Emergency Medical Settings, Emergency Rooms, E.R., Emergency Vehicles, Eye Surgical Centers, Healthcare Settings, Health Care Facilities, Home Health Care, Hospices, Hospitals, ICU, Isolation Areas, Laboratory, Laundry rooms, Long Term Care Centers, Neonatal Intensive Care Units (NICU), Newborn nursery, Nursing homes, Operating Rooms (OR), Ophthalmic Offices, Orthopedics, Out-Patient Surgical Centers (OPSC), Patient Care Areas, Pediatrics, Pediatric Intensive Care Units (PICU), Physical therapy, Physician's offices, Radiology, Recovery Rooms, Rehabilitation, Respiratory therapy, Skilled Nursing Facility, Surgery, Surgery Intensive Care Unit (SICU), Surgical Centers, Transport vehicles and X-Ray.

and/or **Critical Care Areas:** CCU, Emergency Rooms, E.R., ICU, Neonatal Intensive Care Units (NICU), Operating Rooms, Pediatric Intensive Care Units (PICU), Surgery and Surgical Intensive Care Unit (SICU).

and Hospital, Healthcare, and Critical Care Use Sites: May be used on hard non-porous surfaces of: ambulance equipment surfaces; bed railings; bladder scan; blood glucose meters; cabinets; cardiac gym equipment; carts; chairs; counters; defibrillators; dental chairs; dental countertops; dental unit instrument trays; dopplers; electronic thermometers; endodontic equipment such as apex locators; exam tables; gurneys; infant incubators [interior and exterior surfaces of]; infant warmers [interior and exterior surfaces of]; isolettes; IV poles; IV pumps; laboratory equipment and surfaces; loupes; operating room tables and lights; operator light switches; Ophthalmoscopes; Otoscopes; oxygen hoods; physical therapy (PT) equipment surfaces; patient lift equipment; pulse oximeter; radiology equipment; slit lamps; spine back boards; stethoscopes; stretchers; stools; tables; telemetry equipment; telephones; toilet seats; tympanic thermometers; and hard non-porous outside surfaces of: amalgamators and dental curing lights; anesthesia machines and respiratory therapy equipment; apheresis machines, diagnostic equipment, dialysis machines; patient monitoring equipment, patient support and delivery equipment, pulp testers and motors; toilets; ultrasound monitors; and ultrasound transducers and probes.

ACCEPTED
with COMMENTS
in EPA Letter Dated:
MAY 3 2012

Under the Federal Insecticide, Fungicide, and Rodenticide Act as amended, for the pesticide, registered under EPA Reg. No. 9480-4

The terms "wipe(s)", "towel(s)", "towelette(s)", and "cloth(s)" and the product name may be used interchangeably except for within the product primary brand name.

F/shared/PDI/9480-4/Labels/2012/9480-4 amend label.doc March 28, 2012 Page 4 of 13

Grocery Stores or Shopping Centers or Supermarkets or Delicatessens: Disinfects grocery cart handles and grocery cart child seats. Disinfects shopping cart handles and child seats.

Nursery or Daycare Centers: Bassinets [interior and exterior surfaces of], changing tables, cribs, diaper changing stations, diaper pails, infant/child care equipment surfaces, trash cans, toys and other hard, non-porous surfaces listed on this label.

Bathroom[s] or Public Restrooms: Basins, [bath]tubs, bathroom fixtures, cabinets, countertops, doorknobs, faucet[s], handles, hampers, handrails, shower[s] [stalls], showers, sinks, glazed tiled walls, glazed tiles, toilet [handle] [rim] [seats] [tank] [and other exterior surfaces of], urinals [exterior surfaces of] and vanity tops, and other hard non-porous surfaces listed on this label.

Health club facilities and Gyms: Gym equipment, weight-lifting surfaces and other hard non-porous surfaces listed on this label.

Schools or Classrooms or Churches or Office Buildings or Public Facilities or Manufacturing Facilities or Libraries or Public Telephones: Cabinets, chairs, computers, computer monitors, computer mouses, counters, countertops, desks, desktops, doorknobs, fax machines, filing cabinets, filing doors, filing handles, garbage cans, headsets, keyboards, railings, seats, sinks, tables, tabletops, telephones, toys, trash cans, work stations, and other hard non-porous surfaces listed on this label.

Transport vehicles, school busses, public busses, fire trucks, police cars: Hard non porous surfaces of vehicles including steering wheel, hard plastic or metal flooring, seats, and walls.

Restaurants: Hard non porous, non food contact surfaces only including chairs, display cabinets, garbage cans, booster seats, floor, sinks, bathroom surfaces, glazed tiled walls, telephones, cash registers, and doorknobs.

This product is not to be used as a terminal sterilant/high level disinfectant on any surface or instrument that (1) is introduced directly into the human body, either into or in contact with the bloodstream or normally sterile areas of the body, or (2) contacts intact mucous membranes but which does not ordinarily penetrate the blood barrier or otherwise enter normally sterile areas of the body. This product may be used to pre-clean or decontaminate critical or semi-critical medical devices prior to sterilization or high level disinfection.

ACCEPTED
with COMMENTS
in EPA Letter Dated:

MAY 3 2012

Under the Federal Insecticide,
Fungicide, and Rodenticide Act as
amended, for the pesticide,
registered under EPA Reg. No. 9480-4

The terms "wipe(s)", "towel(s)", "towelette(s)", and "cloth(s)" and the product name may be used interchangeably except for within the product primary brand name.

[Symbols including asterisks, bullets or footnotes and similar may be used to designate categories of organisms.]
[ATCC numbers are not required to be listed on production label. Organisms may be listed in a table and in any order.]

Bacteria [(2 Minute Contact)]

- Burkholderia cepacia [ATCC 25416]
- Campylobacter jejuni [ATCC 29428]
- Escherichia coli (E. coli) [ATCC 11229]
- Escherichia coli O157:H7 [ATCC 35150]
- Klebsiella pneumoniae [ATCC 4352]
- Pseudomonas aeruginosa [ATCC 15442]
- Salmonella enterica [ATCC 10708]
- Staphylococcus aureus [ATCC 6538]

TB [Tuberculocidal] [(1 Minute Contact)]

- Mycobacterium bovis BCG (Tuberculosis) [ATCC 35743]

Pathogenic Fungi [(2 Minute Contact)]

- Candida albicans [ATCC 14053]

Multi-Drug Resistant Bacteria [(2 Minute Contact)]

- Acinetobacter baumannii [ATCC 19606]
- ESBL Producing Escherichia coli (E. coli) [ATCC BAA-196]
- Methicillin Resistant Staphylococcus aureus (MRSA) [ATCC 33592]
- Vancomycin Resistant Enterococcus faecalis (VRE) [ATCC 51299]

Viruses* [(2 Minute Contact)]

- *Adenovirus Type 5 [ATCC VR-5]
- *Influenza A/Hong Kong [ATCC VR-544]
- *Influenza A (H1N1) virus [ATCC VR-98] [Strain A/Malaya/302/54]
- *Herpes Simplex Virus Type 2 [ATCC VR-734]
- *Human Coronavirus [ATCC VR-740] Strain 229E
- *Respiratory Syncytial Virus [RSV]
- *Rhinovirus [ATCC VR-1110]
- *Rotavirus Strain WA
- *Vaccinia virus [ATCC VR-1354]

Bloodborne Pathogens[(2 Minute Contact)]

- *Hepatitis B virus (HBV) - Duck HBV[†] [Strain 7/31/07]
- *Hepatitis C virus (Human) (HCV) - Bovine Diarrhea Virus[†] [Strain Oregon C24v-genotype 1]
- *HIV-1 (AIDS virus)[†] [Strain HTLV-III_B]

[Effective against all listed organisms in the presence of organic soil (5% blood serum)]

[*][Product name] is virucidal against Adenovirus Type 5, Herpes Simplex Type 2 (causative agent of genital herpes), Influenza A/Hong Kong (representative of the common flu virus), Influenza A (H1N1) virus, Human Coronavirus, Respiratory Syncytial Virus [RSV], Rhinovirus, Rotavirus, and Vaccinia virus in the presence of organic soil (5% blood serum).

ACCEPTED
with COMMENTS
in EPA Letter Dated:

JUL 3 2012

Under the Federal Insecticide,
Fungicide, and Rodenticide Act as
amended, for the pesticide,
registered under EPA Reg No 9480-4

9480-4

The terms "wipe(s)", "towel(s)", "towelette(s)", and "cloth(s)" and the product name may be used interchangeably except for within the product primary brand name.

F/shared/PDI/9480-4/Labels/2012/9480-4 amend label.doc March 28, 2012 Page 6 of 13

[Optional: Choose one of the following statements:]

[Respiratory illnesses attributable to Pandemic 2009 H1N1 are caused by influenza A virus. This product is a broad-spectrum hard surface disinfectant that has been shown to be effective against (influenza A virus tested and listed on the label) and is expected to inactivate all influenza A viruses including Pandemic 2009 H1N1 (formerly called swine flu).

This product has demonstrated effectiveness against influenza A virus and is expected to inactivate all influenza A viruses including Pandemic 2009 H1N1 influenza A virus.

This product has demonstrated effectiveness against (influenza A virus tested and listed on the label) and is expected to inactivate all influenza A viruses including Pandemic 2009 H1N1 (formerly called swine flu).

Kills Pandemic 2009 H1N1 influenza A virus (formerly called swine flu).

Kills Pandemic 2009 H1N1 influenza A virus.]

†KILLS HIV-1 (AIDS VIRUS), HEPATITIS B VIRUS (HBV) AND HEPATITIS C VIRUS (HCV) ON THE PRE-CLEANED ENVIRONMENTAL SURFACES/OBJECTS AND PRE-CLEANED EXTERNAL SURFACES OF ULTRASOUND TRANSDUCERS AND PROBES PREVIOUSLY SOILED WITH BLOOD/BODY FLUIDS in two (2) minutes at room temperature (68°- 77°F) or (20°- 25°C) in healthcare or other settings in which there is an expected likelihood of soiling of inanimate surfaces/objects with blood or body fluids, and in which the surfaces/objects likely to be soiled with blood or body fluids can be associated with the potential for transmission of Human Immunodeficiency Virus Type 1 (HIV-1) (associated with AIDS), Hepatitis B Virus (HBV) and Hepatitis C Virus (HCV).

[[Product name] is a premoistened, non-woven durable wipe containing a quaternary/alcohol based solution. Recommended for use in hospitals and other critical care areas where the control of the hazards of cross-contamination between treated surfaces is required. [Suitable for use on equipment requiring alcohol-based products.] Use on hard non-porous surfaces and equipment listed on this label made of stainless steel, plastic, Formica® and glass. ~~Some organisms are killed by thorough wiping the surface with the wipe. Most remaining organisms are killed within two (2) minutes by the liquid in the wipe.]~~

ACCEPTED
with COMMENTS
in EPA Letter Dated:
MAY 3 2012

Under the Federal Insecticide,
Fungicide, and Rodenticide Act as
amended, for the pesticide,
registered under EPA Reg. No 9480-4

The terms "wipe(s)", "towel(s)", "towelette(s)", and "cloth(s)" and the product name may be used interchangeably except for within the product primary brand name.

Optional Claims and Descriptors [Note: Deodorizing directions must be used when deodorizing claims (claims involving odor control) are used]

X" x Y" [wipes]

___% bigger [[quilted] wipes] [vs. X" x Y" wipes]

___# pre-saturated towelettes X" x Y"

© [insert year] [insert company name]

[Absorbs] [Absorbent] [wipe]

After use, just toss wipe(s) away

Always ready to use

An effective method to deodorize and disinfect against odor-causing organisms on hard non-porous surfaces listed on this label.

An effective way to disinfect hard, non-porous environmental surfaces listed on this label.

A non-woven disposable cloth for use in hospitals and other critical care areas where control between treated surfaces is required.

Antibacterial

Antimicrobial

[Antibacterial] [Antimicrobial] health club equipment wipe

A Quaternary [ammonium chloride] solution impregnated in a wiping cloth

Are pre-measured to have the recommended amount of germicidal solution, wipe after wipe.

A Sani-Surface® Brand

Assures proper dilution strength, product effectiveness and standardized technique.

[Bactericidal], [Tuberculocidal], [Fungicidal] and [Virucidal*] in 2 [two] minutes

Bleach-free [formula]

Can help reduce the risk of cross contamination on treated surfaces

Cellulosic non-woven disposable cloth

[Cloth-like texture] [Textured] [strong] [for] [with] scrubbing power

Compatible for use on hard, nonporous surfaces commonly found in healthcare settings

Contains [name of active ingredient], the [same] active ingredient used in [Brand-name]

Contains [number] canisters [plus] [and] [number] refills

Convenient

Deodorize hard, non-porous surfaces [Use to]

Deodorizes, and kills common household germs*

Diamond-embossed wipe is low-linting [for sensitive equipment surfaces]

Disinfect external surfaces of ultrasound transducers

Disinfect the pre-cleaned surface

Disinfecting towelettes

Disinfects [and deodorizes] in 2 [Two] minutes

Disinfects grocery cart handles or shopping cart handles or grocery cart child seats or shopping cart child seats

Disinfects hard non-porous environmental surfaces listed on this label [Use to]

Disinfects hard, non-porous surface in 2 minutes

[Disinfects] hard surfaces [that people touch]

Disinfects [health club equipment] [treadmill handles][elliptical handles][exercise bike handles][weight benches]

Disinfects [in [just] two [2] minutes]

Disinfects on the go

Dispenses one wipe at a time

Does not contain bleach

Does not produce mist or overspray

Double-sided scrubbing wipes

Durable, low-lint wipe designed for sensitive equipment surfaces

Easy

Easy [and convenient] way to [touch-up] [bathroom] [office] everyday

[Easy] [convenient] [dispensing] lid [closure] [cap] [package]

Easy drop-in refill[s]

[Easy] pop-up-tub

Easy start lid [package]

Easy to use [easy to refill]

ACCEPTED
with COMMENTS
in EPA Letter Dated:

MAY 3 2012

Under the Federal Insecticide,
Fungicide, and Rodenticide Act as
amended, for the pesticide,
under EPA Reg. No. 7480-4

7480-4

The terms "wipe(s)", "towel(s)", "towelette(s)", and "cloth(s)" and the product name may be used interchangeably except for within the product primary brand name.

F/shared/PDI/9480-4/Labels/2012/9480-4 amend label.doc March 28, 2012 Page 8 of 13

Easy to use package [canister] [container] keeps [your] wipes moist
[Economical] Refill[s] [one] [1] [two] [2] [three] [3] [four] [4] [various numbers] -pack
[Economical] Refills [now] available
Economy
Effective against bathroom bacteria and viruses* *[use at least two bacteria and two viruses from the organism list]*
Effective against [the following micro-organisms on hard, non-porous surfaces] *[list organisms]*
Effective in the presence of 5% blood serum contamination
Eliminates odors
Eliminates potential for overspray
Extra large [disinfecting] [Y" x Z" compared to our A" x B" size] wipes
Fast [Convenient] [Portable] way to disinfect hard non-porous surfaces
For daily use
Gets rid of –or- eliminates odors
[Helps] [kill][s] [eliminate][s] odor-causing bacteria
Helps prevent cross contamination on treated surfaces
Hospital disinfectant [disinfection] *[use only when hospital use sites on label]*
Includes ___ count refill [pack] [contains] ___ wipes
Just –or- simply wipe exterior toilet surface –or- bathroom germs+ away
Just [pull] wipe and toss
Kill germs+ and bacteria instead of germ paper towels, sponges and rags [Use this product to]
Kills bacteria and viruses* in the bathroom *[use at least two bacteria and two viruses from the organism list:]* –or-
on the exterior toilet surfaces
Kills bacteria in 2 minutes
[Kills] [Effective against] [MRSA] [(Methicilin Resistant Staphylococcus aureus)]
Kills household –or- exterior toilet surface –or- bathroom germs+ *[use at least two bacteria and two viruses from the
organism list]*
Kills odor causing bacteria
[Kills] [Effective against] TB in 1 [One] minute
Leaves [bathroom] [office] disinfected [and smelling fresh]
Less [reduced] packaging [less to throw away]
Moisture lock lid
Multi-pack
Multi-purpose disinfectant [Multi [-refill] pack]
New larger, thicker wipe [with diamond-embossed design]
New thicker wipe with diamond-embossed design
Next wipe pops up automatically [everytime] [!]
No canister needed
No measuring
No mixing
No [pinched fingers] [rips] [tears]
No sponges, no rags, no buckets, no mess
No threading [required]
Non-scratching [wipe]
Non-woven disposable cloth
Not for in-home use
Not for sale in *[insert name of state(s)]*
Not for sale *[or use]* after *[insert date]*
Odor [elimination] [neutralization]
One [wipe] at a time dispensing
On-the-go disinfectant
[Package]*[insert type of package]* made from [x%] recycled materials
Perfect for disinfecting exterior toilet surfaces –or- around the exterior toilet surface
Picks up [particles] [dust] [dirt] [hair] [crumbs]
Pop-up [dispensing] [top]
Portable
[Premixed], [premeasured], [premoistened]

ACCEPTED
with COMMENTS
in EPA Letter Dated:
MAY 3 2012

Under the Federal Insecticide,
Fungicide, and Rodenticide Act as
amended, for the pesticide,
registered under EPA Reg. No. 9480-4

The terms "wipe(s)", "towel(s)", "towelette(s)", and "cloth(s)" and the product name may be used interchangeably except for within the product primary brand name.

F/shared/PDI/9480-4/Labels/2012/9480-4 amend label.doc March 28, 2012 Page 9 of 13

Pull n/ Go [pack]
 Quick
 Quick [and easy] [and convenient] way to disinfect
 Quick and easy way to disinfect [bathroom –or- exterior toilet surfaces] [hard, nonporous surfaces]
 [Quickly] eliminates [lingering] [food] odors on surfaces
 Ready to Use
 Recyclable [package]
 Reduce [risk of cross contamination] [on hard non-porous surfaces]
 Reduces [packaging] waste [by x%] [when compared to regular canister or bucket or pail]
 [Refill] package contains [one] [1] [two] [2] [three] [3] [four] [4] [various numbers] [wet] [pre-moistened] [wipe]
 [refill[s]] [roll[s]]
 Refill [size] [pack] [value pack]
 Refillable [with ___# wipes] [dispenser] refill [pack] [for dispenser]
 Requires no mixing or measuring and are ready-to-use
 Resealable [stay-moist] pouch [package] [container] inside
 Reuse your [empty] canisters [again [and again] [!]
 Sample
 Scrubbing power of a sponge in a disinfecting wipe
 Strong, durable diamond-embossed textured wipe deodorizes
 Strong, durable low-lint wipe [designed for sensitive equipment surfaces]
 Suitable for use on equipment requiring alcohol-based products
 Tear at perforation
 Textured diamond-embossed design [deodorizes hard, non-porous surfaces]
 The 2-minute germicidal wipe [disinfectant wipe]
 Thick, heavy duty wipes are bactericidal, tuberculocidal and virucidal* in 2 minutes
 Thick, large wipe disinfects
 Thick, textured wipe with diamond-embossed design
 This [outer] [selling] [package] [container][canister] contains x% post consumer [material][plastic][resin]
 Time to reorder
 Trial
 Tub refill
 Tub with pop-up action
 Twin pack
 Use by [insert date]
 Use on hard, non-porous surfaces only: [stainless steel] [Formica®] [glass] [glass tables] [glazed tile] [Test wipe on
 small inconspicuous area first.]
 Use to pre-clean or decontaminate critical or semi-critical medical devices prior to sterilization / high-level
 disinfection
 [Use to] refill[s] [count] [wipe] canisters or tubs
 Value
 Versatile
 Wet wipes
 Where control of the hazards of cross contamination between treated surfaces is of prime importance
 Wipe [material] made from [x] % [sustainable] [ingredients] [fibers] [May be used only when cellulose wipe material
 used]
 [Wipes out] [Kills] [common] [household] [bacteria] [viruses*] [germs*]
 [Wipes out] [Kills] [eliminates] [list organisms] in [just] [2 minutes]
 [Wipes out] [Kills] [the] flu virus* (*Influenza A/Hong Kong)
 [Wipes out] [Kills] viruses* and bacteria [including the flu virus* (*Influenza A/Hong Kong)]
 [Wiping] [soft] side for disinfecting
 With a bleach-free formula
 X% [more] [wipes] [free] [vs. Z count] [canisters] [packs]
 X% reduction in packaging [material]

ACCEPTED
 with COMMENTS
 in EPA Letter Dated:
 MAY 3 2012

Under the Federal Insecticide,
 Fungicide, and Rodenticide Act as
 amended, for the pesticide,
 registered under EPA Reg. No. 948

The terms “wipe(s)”, “towel(s)”, “towelette(s)”, and “cloth(s)” and the product name may be used interchangeably except for within the product primary brand name.

14/16

[Note: The following claims can be used only for 6 months]

[Better] [New] [Improved] [Stronger] [Thicker] Wipe [!]
 [Better] [new] [&] [improved] [dispensing] lid [closure] [cap] [package] [dispensing] [better [than before]
 New and improved
 [New] [Package] [packaging] uses [x%] less material (plastic) [then] [when compared to] [regular]
 containers [or canisters]
 New thicker and larger diamond-embossed wipe cleans more surface area
 [Now] [Reinforced] [With] Quilted [strength]
 Now with [%] more towel
 Now with [#] more wipes
 [Scrubs] (&) [cleans] [better than ever]
 [Stronger] more durable [wipe]
 Thick[er] [wipe] [with] cloth-like texture
 X% [Bigger] [larger] [quilted] wipes
 [x%] thicker wipes

Master Label Reader Notes

[A footnote can be used to list organisms shown on page 2. Bacteria and virus can be separated into footnotes 1 and 2 if desired.]

[When organisms are listed next to a claim, the organisms may be listed in a footnote instead of directly next to the claim]

[* All pesticidal "germ" claims must be linked to bacteria (minimum: Salmonella and Staph) and at least one virus. For example: Front panel: "Kills germs*" Back panel: "Kills Salmonella enterica, Staphylococcus aureus, Herpes Simplex Type 2, and Influenza A/Hong Kong".]

ACCEPTED
with COMMENTS
in EPA Letter Dated:

MAY 3 2012

Under the Federal Insecticide,
Fungicide, and Rodenticide Act as
amended, for the pesticide,
registered under EPA Reg. No. 9480-4

The terms "wipe(s)", "towel(s)", "towelette(s)", and "cloth(s)" and the product name may be used interchangeably except for within the product primary brand name.

[The following graphics and statements are optional.
They may be placed anywhere on label/container.]



NOT A BABY WIPE

NOT A SKIN WIPE

NOT FOR USE ON SKIN

FOR USE ON HARD [NON POROUS] SURFACES ONLY

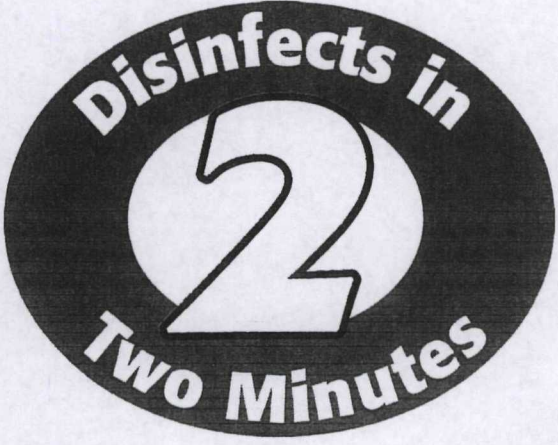
**ACCEPTED
with COMMENTS
in EPA Letter Dated:**

MAY 3 2012

Under the Federal Insecticide,
Fungicide, and Rodenticide Act as
amended, for the pesticide,
registered under EPA Reg. No. 940-1

The terms "wipe(s)", "towel(s)", "towelette(s)", and "cloth(s)" and the product name may be used interchangeably except for within the product primary brand name.

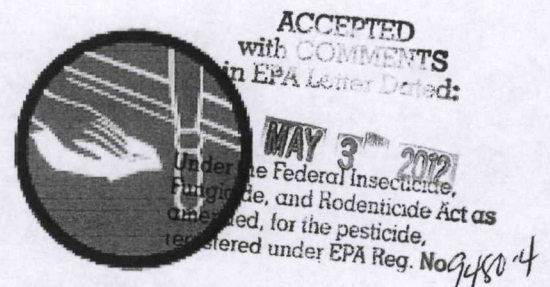
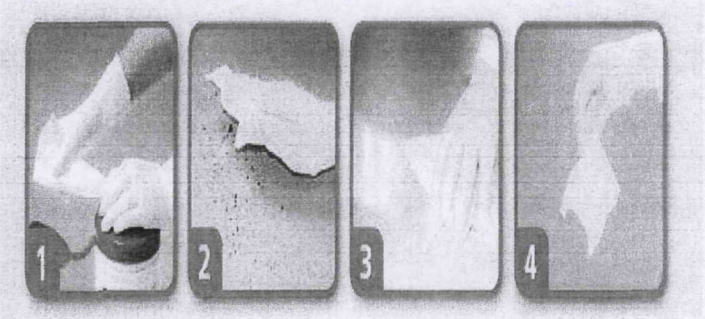
[The following graphics and statements are optional. They may be placed anywhere on label/container.]



This graphic shows use of the wipe dispenser



[One side scrubs] [One side wipes]



FINISHED FLOORS

The terms "wipe(s)", "towel(s)", "towelette(s)", and "cloth(s)" and the product name may be used interchangeably except for within the product primary brand name.

F/shared/PDI/9480-4/Labels/2012/9480-4 amend label.doc March 28, 2012 Page 13 of 13