

SEP 19 2007

Ms. Cristina Griffin
Agent for PDI
PDI, Health Care Div. of Nice-Pack Products, Inc.
c/o Delta Analytical Corp.
12510 Prosperity Drive, Suite 160
Silver Spring, MD 20904

Subject: **Sani-Cloth Germicidal Wipes Germicidal Disposable Cloth**
EPA Registration Number 9480-4
Application Dated April 30, 2007
EPA Received Date May 8, 2007

Dear: Ms. Griffin:

The following amendment, submitted in connection with registration under the Federal Insecticide, Fungicide, and Rodenticide Act (FIFRA), as amended, is acceptable with the following comments:

Proposed Amendments:

Revised labeling and Confidential Statement of Formula (CSF)

Labeling Comments:

- 1. We have completed a review of the submitted eye and skin irritation studies. These are acceptable studies with the eye irritation supporting the need to change the signal word from "Caution" to "Danger".
 - a. In the Hazards to Humans and Domestic Animals paragraph add "or using restrooms" to the end of the sentence "Wash thoroughly with soap and water after handling and before eating, drinking, chewing gum, using tobacco or using restroom. Remove and wash contaminated clothing before reuse.

SYMBOL	b. Delete the precaution "Wear protective eye wear as required" This statement is not appropriate for this wipe (towelette) product.						
SURNAME							
DATE							

- c. On page 4 of the proposed label in the "Restaurants" section change "tiled walls" to "glazed tiled walls".
- d. On page 6 of the label the term " Bonus" must be deleted or clarified.
- e. On page 6 of the label reference is made that the product can be used to deodorize hard non-porous surfaces. However, no directions are provided. The claim must either be deleted or directions provided.
- f. On page 6 revise the claim "A non-woven disposable cloth for use in hospital and other critical care areas where control To readwhere control between treated surfaces is required."
- g. On page 6 of the proposed label list the relevant bacteria and viruses after the claim "Effective against bathroom bacteria and viruses".
- h. On page 6 delete "contains 55% (isopropyl) alcohol"
- i. On page 7 of the proposed label revise the claim "Help prevent (bacterial) (viral) cross contamination (between) (hard non-porous) (surfaces) "Helps prevent cross contamination on treated surfaces".
- j. On page 7 delete the claim "Powerful to disinfect" as this is a heightened efficacy claim.
- k. On page 7 delete the claim "starts killing bacteria on contact" as this implies immediate efficacy which is not supported by the available data.
- l. On page 7 list the relevant organisms that are supported by your data after the claim "kills germs and bacteria and viruses in the bathroom".
- m. On page 7 the claim "New and Improved" can only be used for a 6 month period.
- n. On page 9 of the proposed label revise the claim "Easy one step cleaning (and disinfecting) (except pre-cleaning... to read (except pre-cleaning is required for heavy soil and blood and body fluids".
- o. The use of the Term "germs" must be qualified anywhere it appears in the label. Refer to the germs policy on the EPA/AD web site.

Efficacy Comments:

- 2. The efficacy data submitted to support a claim to control data submitted to support a claim to control E. coli 057:H7 and Clostridium difficile (vegetative cells). (Both studies are acceptable).
 - a. A claim to control the vegetative form of clostridium difficile is not acceptable at this time. Peer-reviewed scientific literature and case studies have consistently demonstrated that the C. difficile spore is the source of public health concern. If you have data/information to show other wise the Agency will re-valueate its position.
- 3. The active ingredient sources utilized are EPA registered and all inert ingredients present in the proposed three formulations were approved for use in pesticide formulations. The new fragrance composition utilized in this alternate formulation were reviewed and added to the inert database.

Note that acute oral, acute dermal acute inhalation and dermal sensitization studies are not available for this product. These studies will need to be addressed at reregistration.

Product Chemistry:

- 1. The basic CSF dated 3/20/07 and alternate formulation dated 3/20/07 are acceptable.
- 2. The active ingredient sources listed on the CSFs are EPA registered .
- 3. All the active and inert ingredients used are acceptable.

General Comments:

Should you have any questions or comments concerning this letter, please contact Drusilla Copeland on (703) 308-6224.

Sincerely,



Velma Nobel
Product Manager (31)
Regulatory Management Branch I
Antimicrobials Division (7510CP)

Enclosure: Efficacy Review dated 8/16/07, Acute Toxicity Review dated 8/30/07, Product Chemistry Review dated 9/4/07

4 8 16

SANI-CLOTH® GERMICIDAL WIPES GERMICIDAL DISPOSABLE CLOTH

ACTIVE INGREDIENTS:

n-Alkyl (68% C ₁₂ , 32% C ₁₄) dimethyl ethylbenzyl ammonium chlorides.....	0.25%
n-Alkyl (60% C ₁₄ , 30% C ₁₆ , 5% C ₁₂ , 5% C ₁₈) dimethyl benzyl ammonium chlorides.....	0.25%
OTHER INGREDIENTS	99.50%
TOTAL	100.00%

**KEEP OUT OF REACH OF CHILDREN
DANGER**

ACCEPTED
with COMMENTS
in EPA Letter Dated:

SEP 19 2007

See-back [side] panel for additional precautionary statements

Under the Federal Insecticide,
Fungicide, and Rodenticide Act as
amended, for the pesticide,
registered under EPA Reg. No. **9480-4**

NET CONTENTS
____ # OF CLOTHS [SIZE of each cloth]

EPA Reg. No.: 9480-4
EPA Est. No. : 9480-NY-1
or
EPA Est. No. A=9480-NY-1, B=9480-IN-1
Alpha character will precede batch code on product

Manufactured by:
PDI, The Healthcare Division of Nice-Pak Products, Inc.
Two Nice-Pak Park, Orangeburg, NY 10962-1376
[website address] [phone number]

First Aid:

Call a poison control center or doctor for treatment advice. Have the product container or label with you when calling a poison control center or doctor, or going for treatment.

If in eyes:

-Hold eye open and rinse slowly and gently with water for 15-20 minutes. Remove contact lenses, if present, after the first 5 minutes, then continue rinsing.

If on skin:

-Take off contaminated clothing.
-Rinse skin immediately with plenty of water for 15-20 minutes.

The terms "wipe(s)", "towel(s)", "towelette(s)", and "cloth(s)" and the product name may be used interchangeably except for within the product primary brand name.

Precautionary Statements**Hazards to Humans and Domestic Animals**

Danger. Causes irreversible eye damage. Harmful if absorbed through skin. Do not get in eyes or on clothing. Wear protective eyewear as required. Avoid contact with skin. Wash thoroughly with soap and water after handling and before eating, drinking, chewing gum, or using tobacco. Remove and wash contaminated clothing before reuse.

Physical or chemical hazard

Combustible. Do not use or store near heat or open flame. Do not use on natural marble, windows, unpainted wood, brass, clear plastic or colored grout.

[in accordance with EPA stamped label of November 1, 2006, "all ATCC numbers for the organisms tested should appear on the label."]

Bactericidal

Tuberculocidal

Virucidal*

[Bactericidal, Tuberculocidal and Virucidal* in 2 minutes]

*Adenovirus Type 5 (ATCC VR-5), Herpes Simplex Type 2 (ATCC VR-734), Influenza A2/Hong Kong (ATCC VR-544), Human Coronavirus (ATCC VR-740) Strain 229E, Respiratory Syncytial Virus (RSV), Rhinovirus (ATCC VR-1110), Rotavirus Strain WA, Vaccinia virus (ATCC VR-1354), HIV-1[†], Hepatitis B Virus[†], Hepatitis C Virus[†]

Virucidal against Adenovirus Type 5, Herpes Simplex Type 2, Influenza A2/Hong Kong, Human Coronavirus, Respiratory Syncytial Virus (RSV), Rhinovirus, Rotavirus, Vaccinia virus, HIV-1[†], Hepatitis B Virus[†], Hepatitis C Virus[†]

[Product name] kills bacteria listed on this label

Burkholderia cepacia (ATCC 25416)

Candida albicans (ATCC 14053)

~~Clostridium difficile (ATCC 9689) (Vegetative Form)~~

Escherichia coli (E. coli) (ATCC 11229)

~~Escherichia coli O157:H7 (ATCC 35150)~~

ESBL Producing Escherichia coli (E. coli) (ATCC BAA-196)

Klebsiella pneumoniae (ATCC 4352)

Methicillin Resistant Staphylococcus aureus (MRSA) (ATCC 33592)

Mycobacterium bovis BCG (Tuberculosis) (ATCC 35743)

Pseudomonas aeruginosa (ATCC 15442)

Salmonella enterica (ATCC 10708)

Staphylococcus aureus (ATCC 6538)

Vancomycin Resistant Enterococcus faecalis (VRE) (ATCC 51299)

in the presence of organic soil (5% blood serum)

[Product name] is virucidal against Adenovirus Type 5, Herpes Simplex Type 2 (causative agent of genital herpes), Influenza A2/Hong Kong (representative of the common flu virus), Human Coronavirus, Respiratory Syncytial Virus (RSV), Rhinovirus, Rotavirus, and Vaccinia virus in the presence of organic soil (5% blood serum).

[†]KILLS HIV-1 (AIDS VIRUS), HEPATITIS B VIRUS (HBV) AND HEPATITIS C VIRUS (HCV) ON THE PRE-CLEANED ENVIRONMENTAL SURFACES/OBJECTS AND PRE-CLEANED EXTERNAL SURFACES OF ULTRASOUND TRANSDUCERS AND PROBES PREVIOUSLY SOILED WITH BLOOD/BODY FLUIDS in two (2) minutes at room temperature (68°- 77°F) or (20°- 25°C) in healthcare or other settings in which there is an expected likelihood of soiling of inanimate surfaces/objects with blood or body fluids, and in which the surfaces/objects likely to be soiled with blood or body fluids can be associated with the potential for transmission of Human Immunodeficiency Virus Type 1 (HIV-1) (associated with AIDS), Hepatitis B Virus

The terms "wipe(s)", "towel(s)", "towelette(s)", and "cloth(s)" and the product name may be used interchangeably except for within the product primary brand name.

(HBV) and Hepatitis C Virus (HCV).

[Product name] is a premoistened, non-woven durable wipe containing a quaternary/alcohol based solution. Recommended for use in hospitals and other critical care areas where the control of the hazards of cross-contamination between treated surfaces is required. Use on hard non-porous surfaces and equipment listed on this label made of stainless steel, plastic, Formica® and glass. Some organisms are removed from the surface by thoroughly wiping the surface with the wipe. Most remaining organisms are killed within two (2) minutes by exposure to the liquid in the wipe.

Areas of Use:

Hospital and Healthcare Settings: Ambulances, Ambulatory Surgical Centers (ASC), Anesthesia, CAT Labs, CCU, Central Supply, Clinics, Dental Offices, Dialysis Clinics, Doctors Offices, **Donation Centers [blood][plasma][semen][milk][apheresis]**, **Emergency Medical Settings**, Emergency Rooms, E.R., Emergency Vehicles, **Eye Surgical Centers**, Healthcare Settings, Health Care Facilities, Home Health Care, Hospices, Hospitals, ICU, **Isolation Areas**, Laboratory, Laundry rooms, Neonatal Intensive Care Units (NICU), Newborn nursery, Nursing homes, Operating Rooms (OR), **Ophthalmic Offices**, Orthopedics, **Out-Patient Surgical Centers (OPSC)**, **Patient Care Areas**, Pediatrics, Pediatric Intensive Care Units (PICU), Physical therapy, Physician's offices, Radiology, Recovery Rooms, Rehabilitation, Respiratory therapy, Surgery, **Surgical Centers**, Transport vehicles and X-Ray.

and/or

Critical Care Areas: CCU, Emergency Rooms, E.R., ICU, Neonatal Intensive Care Units (NICU), Operating Rooms, Pediatric Intensive Care Units (PICU) and Surgery.

and

Hospital, Healthcare, and Critical Care Use Sites: May be used on hard non-porous surfaces of: **ambulance equipment surfaces**; bed railings; cabinets; carts; chairs; counters; dental chairs; **dental countertops**; **dental unit instrument trays**; **endodontic equipment such as apex locators**; exam tables; gurneys; **infant incubators [interior and exterior surfaces of]**; **infant warmers [interior and exterior surfaces of]**; isolettes; IV poles; **laboratory equipment and surfaces**; **loupes**; **operating room tables and lights**; **operatory light switches**; **oxygen hoods**; **physical therapy (PT) equipment surfaces**; **slit lamps**; **spine back boards**; stethoscopes; stretchers; stools; tables; telephones; toilet seats; and hard non-porous outside surfaces of: **amalgamators and dental curing lights**; **anesthesia machines and respiratory therapy equipment**; apheresis machines, diagnostic equipment, dialysis machines; patient monitoring equipment, patient support and delivery equipment, **pulp testers and motors**; toilets; and ultrasound transducers and probes.

Grocery Stores or Shopping Centers or Supermarkets or Delicatessens: Disinfects grocery cart handles and grocery cart child seats. Disinfects shopping cart handles and child seats.

Nursery or Daycare Centers: **Bassinets [interior and exterior surfaces of]**, changing tables, cribs, **diaper changing stations**, diaper pails, **infant/child care equipment surfaces**, trash cans, toys and other hard, non-porous surfaces listed on this label.

Bathroom[s] or Public Restrooms: **Basins**, [bath]tubs, bathroom fixtures, **cabinets countertops**, **doorknobs**, **faucet[s]**, **handles**, **hampers**, **handrails**, [shower[s] [stalls] showers, sinks, **tiled walls**, tiles, toilet [handle][rim][seats][tank] [and other exterior surfaces of] **urinals [exterior surfaces of]** and vanity tops, and other hard non-porous surfaces listed on this label.

Health club facilities and Gyms: Gym equipment, **weight lifting surfaces** and other hard non-porous surfaces listed on this label.

Schools or Classrooms or Office Buildings or Public Facilities or Manufacturing Facilities or Libraries or Public telephones: Cabinets, chairs, computers, **computer monitors**, **computer mouses**, counters, countertops, desks, desktops, doorknobs, fax machines, **filing cabinets**, **filing doors**, **filing handles**, garbage cans, headsets, keyboards, railings, seats, sinks, tables, tabletops, telephones, toys, trash cans, **work stations**, and other hard non-porous surfaces listed on this label.

The terms "wipe(s)", "towèl(s)", "towelette(s)", and "cloth(s)" and the product name may be used interchangeably except for within the product primary brand name.

Transport vehicles, school busses, public busses, fire trucks, police cars: Hard non porous surfaces of vehicles including steering wheel, hard plastic or metal flooring, seats, and walls.

Restaurants: Hard non porous, non food contact surfaces only including chairs, display cabinets, garbage cans, booster seats, floor, sinks, bathroom surfaces, tiled walls, telephones, cash registers, and doorknobs.

This product is not to be used as a terminal sterilant/high level disinfectant on any surface or instrument that (1) is introduced directly into the human body, either into or in contact with the bloodstream or normally sterile areas of the body, or (2) contacts intact mucous membranes but which does not ordinarily penetrate the blood barrier or otherwise enter normally sterile areas of the body. This product may be used to preclean or decontaminate critical or semi-critical medical devices prior to sterilization or high level disinfection.

Directions for use

It is a violation of Federal law to use this product in a manner inconsistent with its labeling.

Dispenser directions:

Canister directions:

To start feed: Remove lid and discard inner seal from canister. Find center of wipe roll, remove first wipe for use, twist corner of next wipe into a point and thread through the hole in the canister lid. Pull through about one inch. Replace lid. Dispense remaining wipes as necessary by pulling out at an angle. When not in use keep center cap of lid closed to prevent moisture loss.

Travel pack directions:

Peel back label slowly. Pull out wipes as needed and reseal label. Unfold wipe.

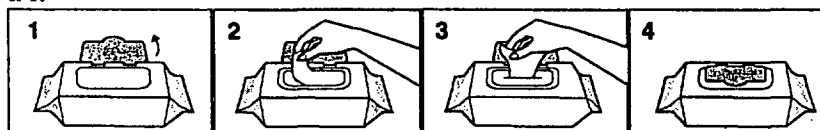
Box directions:

Open along perforations as indicated. Remove packets as needed.

Packet:

Tear open packet. Unfold wipe and use as directed. Discard after single use.

SOLO® PAK:



DO NOT FLUSH • STORE AT ROOM TEMPERATURE
DISPOSE OF USED WIPES IN TRASH RECEPTACLE • KEEP SOLO®
LID CLOSED WHEN NOT IN USE

REFILL PACKET

This refill package is made for use only in a [product name] canister. Do not use this product in a canister for another product. Do not use the refill wipes in a container that is cracked or broken. Discard the cracked or broken container in accordance with the container disposal instructions on the label.

[Option 1]

Remove [entire] lid from canister. Tear open refill [package] at [notch], [mark], [arrow] and place [wipe] roll in empty canister. Follow directions on canister to dispense wipes.

[Option 2]

Remove [entire] lid from canister. Tear open refill [package] at [notch], [mark], [arrow]. Place [entire] refill package of wipes in empty canister. Follow directions on canister to dispense wipes.

The terms "wipe(s)", "towel(s)", "towelette(s)", and "cloth(s)" and the product name may be used interchangeably except for within the product primary brand name.

8 8 16

GENERIC:

Open lid. Pull out wipe. Close lid tightly.

DISINFECTING: To disinfect nonfood contact surfaces only: Use a wipe to remove heavy soil. Unfold a clean wipe and thoroughly wet surface. Treated surface must remain visibly wet for a full two (2) minutes. Use additional wipe(s) if needed to assure continuous two (2) minute wet contact time. Let air dry. *[When TB is included on the label, add the following or use the TB directions below.]* These directions also apply to Mycobacterium bovis BCG (Tuberculosis) at 68°F (20°C).

[The following sets of directions are optional and for hospital/medical facility use only:

Tuberculosis (TB) [Outbreaks]:

This product is effective against Mycobacterium bovis BCG (Tuberculosis) in one minute at 68°F (20°C). Use a wipe to remove heavy soil. Unfold a clean wipe and thoroughly wet surface. Treated surface must remain visibly wet for one (1) full minute. Use additional wipe(s) if needed to assure continuous one (1) minute wet contact time. Let air dry. Although efficacy at a one (1) minute contact time has been shown to be adequate against TB, this time is not sufficient for other organisms on the label. Therefore a 2 minute wet contact time must be used for all listed non TB organisms.

and/or

Ultrasound transducers and probes:

For use on external surfaces of ultrasound transducers and probes only.

To disinfect: Pre-clean gel from external surface of ultrasound transducer or probe to be disinfected by using a clean washcloth. Then thoroughly wet the probe with a wipe. Treated surface must remain visibly wet for a full two (2) minutes. Use additional wipe(s) if needed to assure continuous two (2) minute wet contact time. Let air dry.]

†SPECIAL INSTRUCTIONS FOR CLEANING AGAINST HIV-1, HEPATITIS B VIRUS AND HEPATITIS C VIRUS OF SURFACES/OBJECTS SOILED WITH BLOOD/BODY FLUIDS

Personal protection: When using this product, wear disposable protective gloves, protective gowns, face masks, or eye coverings as appropriate when handling HIV-1 (AIDS Virus), HBV or HCV infected blood or body fluids.

Cleaning procedure: All blood and other body fluids must be thoroughly cleaned from surfaces and objects before disinfection by the germicidal wipe. Open, unfold first germicidal wipe to remove heavy soil.

Disposal of infectious materials: Dispose of used wipe in accordance with local regulations for infectious waste disposal.

Contact time: Use second germicidal wipe to thoroughly wet surface. Allow to remain wet two (2) minutes, let air dry

[Use storage/disposal statement A if canister directions used. Use storage/disposal statement B if travel pack or packet directions used.]

Storage and disposal

Statement A: For canisters and refill dispensers:

Storage: Do not store near heat or open flame. When not in use keep center cap of lid closed to prevent moisture loss.

Towelette Disposal: Do not reuse towelette. Dispose of used towelette in trash. Do not flush in toilet.

Dispenser Disposal: Do not reuse empty container. Triple rinse and offer for recycling. If recycling is not available, put in trash collection.

[If refillable container is being used substitute the following: Refill Dispenser Disposal: Triple rinse cracked or broken containers and offer for recycling. If recycling is not available, discard in trash.]

Statement B: For packets, travel packs, and [refill] packets:

Storage: Do not store near heat or open flame.

Towelette Disposal: Do not reuse towelette. Dispose of used towelette in trash. Do not flush in toilet.

Travel Pack [or Solo® Pak or Refill Packet] Disposal: Put empty travel pack [or Solo® Pak or refill packet] in trash collection.

The terms "wipe(s)", "towel(s)", "towelette(s)", and "cloth(s)" and the product name may be used interchangeably except for within the product primary brand name.

Optional Claims and Descriptors

X" x Y" [wipes]

% bigger [[quilted] wipes] [vs. X" x Y" wipes]

pre-saturated towelettes X" x Y"

After use, just toss wipe(s) away

Always ready to use

An effective method to deodorize and disinfect against odor-causing organisms on hard non-porous surfaces listed on this label.

An effective way to disinfect hard, non-porous environmental surfaces listed on this label.

A non-woven disposable cloth for use in hospitals and other critical care areas where control of the hazards of cross contamination between treated surfaces are required.

Antibacterial

Antimicrobial

A Sani-Surface® Brand

Are pre-measured to have the recommended amount of germicidal solution, wipe after wipe.

Assures proper dilution strength, product effectiveness and standardized technique.

Bleach-free [[formula]

Bonus

Can help reduce the risk of cross contamination on treated surfaces

Cellulosic non-woven disposable cloth

Contains [name of active ingredient], the [same] active ingredient used in: [Brand-name]

Contains [number] canisters [plus] [and] [number] refills

~~Contains [number] [refill] [refills]~~

Convenient

Deodorize hard, non-porous surfaces [Use to]

Deodorizes, and kills common household germs

Diamond-embossed wipe is low-linting [for sensitive equipment surfaces]

Disinfects [in [just] two [2] minutes]

Disinfect external surfaces of ultrasound transducers

Disinfect the precleaned surface

Disinfects and deodorizes

Disinfects hard, non-porous surface in 2 minutes

Disinfects and deodorizes in 2 minutes

Disinfecting towelettes

Disinfects grocery cart handles or shopping cart handles or grocery cart child seats or shopping cart child seats

Disinfects hard non-porous environmental surfaces listed on this label [Use to]

Dispenses one wipe at a time

Does not contain bleach

Does not produce mist or overspray

Double-sided scrubbing wipes

Durable, low-lint wipe designed for sensitive equipment surfaces

Easy

Easy [and convenient] way to [touch-up] [bathroom] [office] everyday

Easy drop-in refill[s]

[Easy] pop-up-tub

Easy start lid [package]

Easy to use [easy to refill]

[Economical] Refill[s] [one] [1] [two] [2] [three] [3] [four] [4] [various numbers] -pack

[Economical] Refills [now] available

Economy

Effective against bathroom bacteria and viruses

Effective against [the following micro-organisms on hard, non-porous surfaces] [list organisms]

Eliminates odors

The terms "wipe(s)", "towel(s)", "towelette(s)", and "cloth(s)" and the product name may be used interchangeably except for within the product primary brand name.
F:\shared\labels\pdi\9480-4\2007\9480-4 draft label 042307.doc April 23, 2007 Page 6 of 13

Extra large disinfecting wipes**Fast [Convenient] [Portable] way to disinfect hard non-porous surfaces**

For daily use

Gets rid of -or- eliminates odors

Helps prevent [bacterial] [viral] cross contamination [between] [hard non-porous] [surfaces]

Includes ___ count refill [pack] [contains] ___ wipes

Just -or- simply wipe exterior toilet surface -or- bathroom germs away

Just [pull] wipe and toss

Kill germs and bacteria instead of germey paper towels, sponges and rags [Use this product to]

Kills germs and bacteria and viruses in the bathroom -or- on the exterior toilet surfaces

Kills bacteria in 2 minutes

Kills household -or- exterior toilet surface -or- bathroom germs

Kills odor-causing germs

Leaves [bathroom] [office] disinfected [and smelling fresh]

Multi-pack**Multi-purpose disinfectant [Multi [-refill] pack]**

New and improved [use this for 6 months after announced improvement]

New thicker wipe with diamond-embossed design

New larger, thicker wipe [with diamond-embossed design]

Next wipe pops up automatically [everytime] [!]

No canister needed

No measuring

No mixing

No sponges, no rags, no buckets, no mess

Non-woven disposable cloth

Now with [%] more towel [use this for 6 months after converting to larger towel]

Now with [#] more wipes [use this for 6 months after converting to a larger number of towels]

On-the-go disinfectant

Perfect for disinfecting exterior toilet surfaces -or- around the exterior toilet surface**Pop-up dispensing****Pop-up [top]****Portable****Powerful enough to disinfect**

Premeasured

Premixed

Premixed, premeasured, premoistened

Premoistened

Pull n/ Go [pack]**Quick****Quick [and easy] [and convenient] way to disinfect****Quick and easy way to disinfect bathroom -or- exterior toilet surfaces****Quick and easy way to disinfect hard nonporous surfaces**

Ready to Use

[Refill] package contains [one] [1] [two] [2] [three] [3] [four] [4] [various numbers] [wet] [pre-moistened] [wipe] [refill[s]] [roll[s]]**Refill [size] [pack] [value pack]****Refillable [with ___ # wipes] [dispenser] refill [pack] [for dispenser]**

Requires no mixing or measuring and are ready-to-use

Resealable pouch [package] [container] inside**Reuse your [empty] canisters [again [and again] [!]****Sample****Scrubbing power of a sponge in a disinfecting wipe****Starts killing [bacteria] on contact**

Strong, durable diamond-embossed textured wipe deodorizes

Strong, durable low-lint wipe [designed for sensitive equipment surfaces]

The terms "wipe(s)", "towel(s)", "towelette(s)", and "cloth(s)" and the product name may be used interchangeably except for within the product primary brand name.

Tear at perforation

Textured diamond-embossed design deodorizes hard, non-porous surfaces

Textured diamond-embossed design

The 2-minute germicidal wipe [disinfectant wipe]

Thick, heavy duty wipes are bactericidal, tuberculocidal and virucidal in 2 minutes

Thick, large wipe disinfects

Thick, textured wipe with diamond-embossed design

Time to reorder

Trial

Tub with pop-up action

Tub refill

Twin pack

Use to preclean or decontaminate critical or semi-critical medical devices prior to sterilization/

high-level disinfection

[Use to] refill[s] [count] [wipe] [canisters or tubs]

Value

Versatile

Wet wipes

Where control of the hazards of cross contamination between treated surfaces is of prime importance

[Wipes out] [Kills] [common] [household] [bacteria] [viruses*] [germs]

[Wipes out] [Kills] [eliminates] [list organisms] in [just] [2 minutes]

[Wipes out] [Kills] [the] flu virus

[Wipes out] [Kills] viruses* and bacteria [including the flu virus]

[Wiping] [soft] side for disinfecting

With a bleach-free formula

© [insert year] [insert company name]

1 [A footnote can be used to list organisms shown on page 2. Bacteria and virus can be separated into footnotes 1 and 2 if desired.]

The terms "wipe(s)", "towel(s)", "towelette(s)", and "cloth(s)" and the product name may be used interchangeably except for within the product primary brand name.

CLEANING: [cleaning directions and claims have been grouped on this page (they were previously incorporated into other parts of the label)]

DIRECTIONS FOR USE:

CLEANING: Wipe surface with towelette until clean. Let air dry.

CLAIMS:

An effective method to clean against odor-causing organisms on hard non-porous surfaces listed on this label.

A One Step[†] Cleaner [and disinfectant] (except precleaning is required for blood and body fluids)
Cleans

Cleans and disinfects

Cleans grocery carts and shopping carts

Diamond-embossed pattern [texture] provides effective cleaning

Easy One Step[†] Cleaning [and disinfecting] (except precleaning is required for blood and body fluids)

Leaves [bathroom] [office] clean [and disinfected] [and smelling fresh]

Leaves bathroom fresh and clean in [just] minutes

Multi-purpose cleaner [Multi [-refill] pack]

New thicker and larger diamond-embossed wipe cleans more surface area [use this for 6 months after converting to larger towel]

Perfect for cleaning [and disinfecting] around the toilet

Premoistened [wet] household cleaning wipe

Premoistened with specially formulated cleaners to handle daily clean-ups without bottles, sponges or buckets [This product is]

Quick [and easy] [and convenient] way to clean [and disinfect]

Quick and easy way to clean [and disinfect] bathroom -or- exterior toilet surfaces

Quick and easy way to clean [and disinfect] hard, nonporous surfaces

[So] surfaces are more than [just] [clean] [they re] [disinfected]

[Soft] side for [cleaning] dirt away

Strong, durable diamond-embossed textured wipe cleans [and deodorizes]

Textured wipe for effective cleaning

Textured diamond-embossed design cleans hard, non-porous surfaces

Textured diamond-embossed design helps remove soil from surfaces

[Textured] [scrubby] [rough] side for [scrubbing] [cleaning] [removing] [wiping] [tough] [stains] [soils] [messes]

Thick, large wipe cleans

Wipe away odors

[Wipes out] [Kills] germs that cause odors

[Wipes out] [Kills] germs while it cleans

[Wiping] [soft] side for [wiping] dirt away [and disinfecting]

[The following graphics and statements are optional.
They may be placed anywhere on label/container.]



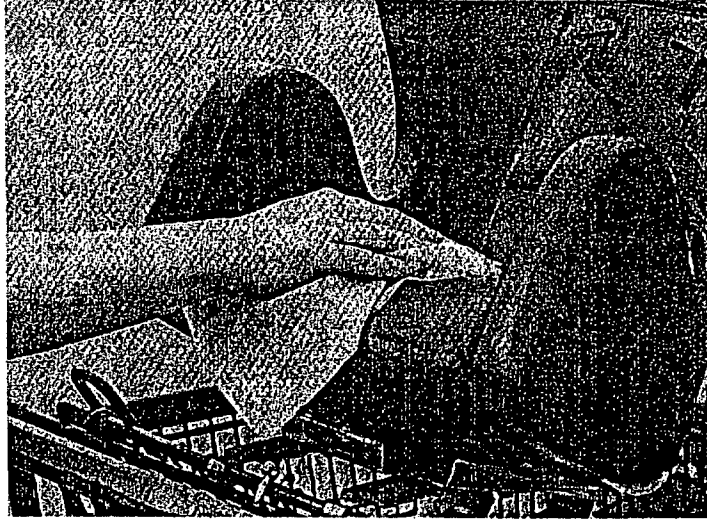
NOT A BABY WIPE

NOT FOR USE ON SKIN

This graphic shows use of the wipe dispenser.

The terms "wipe(s)", "towel(s)", "towelette(s)", and "cloth(s)" and the product name may be used interchangeably except for within the product primary brand name.

[The following graphics and statements are optional.]



They may be placed anywhere on label/container.]

The terms "wipe(s)", "towel(s)", "towelette(s)", and "cloth(s)" and the product name may be used interchangeably except for within the product primary brand name.

[The following graphics and statements are optional.
They may be placed anywhere on label/container.]



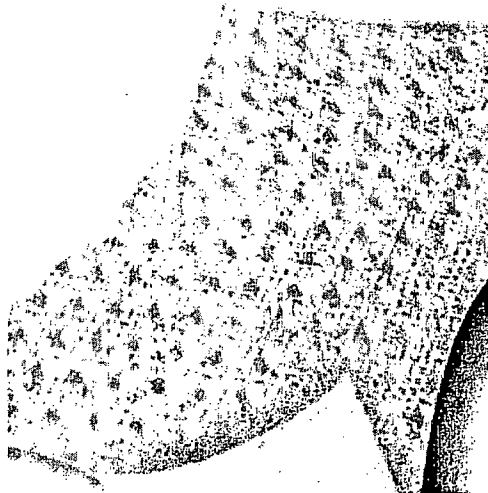
Not a Skin Wipe.
For Use on Hard Surfaces Only.



Not a Skin Wipe.
For Use on Hard Surfaces Only.

The terms "wipe(s)", "towel(s)", "towelette(s)", and "cloth(s)" and the product name may be used interchangeably except for within the product primary brand name.

[The following graphics and statements are optional.
They may be placed anywhere on label/container.]



[One side scrubs]
[One side wipes]

The terms "wipe(s)", "towel(s)", "towelette(s)", and "cloth(s)" and the product name may be used interchangeably except for within the product primary brand name.