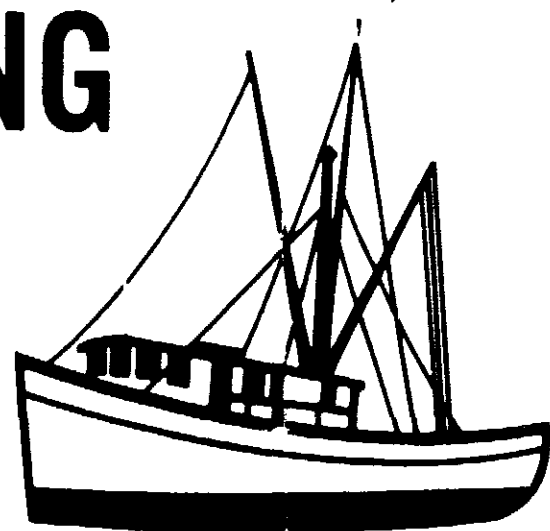
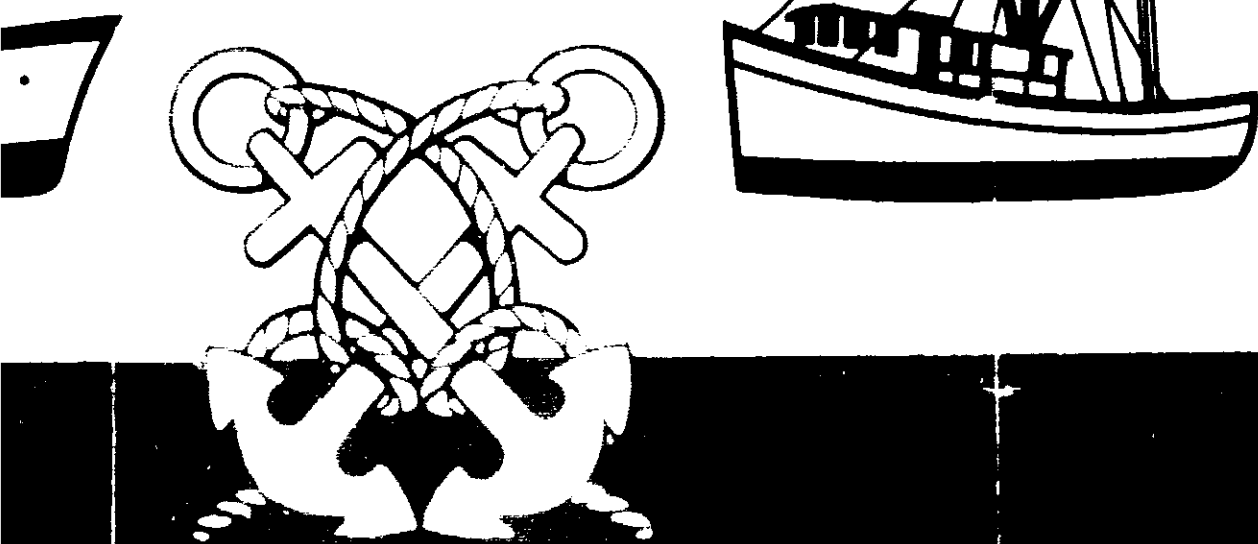


ONE U.S. GALLON

# NAVICOTE<sup>®</sup>

## ANTIFOULING



**WARNING!**  
**CONTAINS XYLOL, BUTYL ALCOHOL**  
**AND CUPROUS OXIDE**

DO NOT USE, POUR, SPILL OR STORE NEAR  
HEAT OR OPEN FLAME. Avoid breathing of  
vapor or spray mist. Avoid contact with  
skin. Do not take internally. Close container  
after using. Do not reuse empty container.  
Destroy it by perforating or crushing. Bury  
or discard in a safe place.

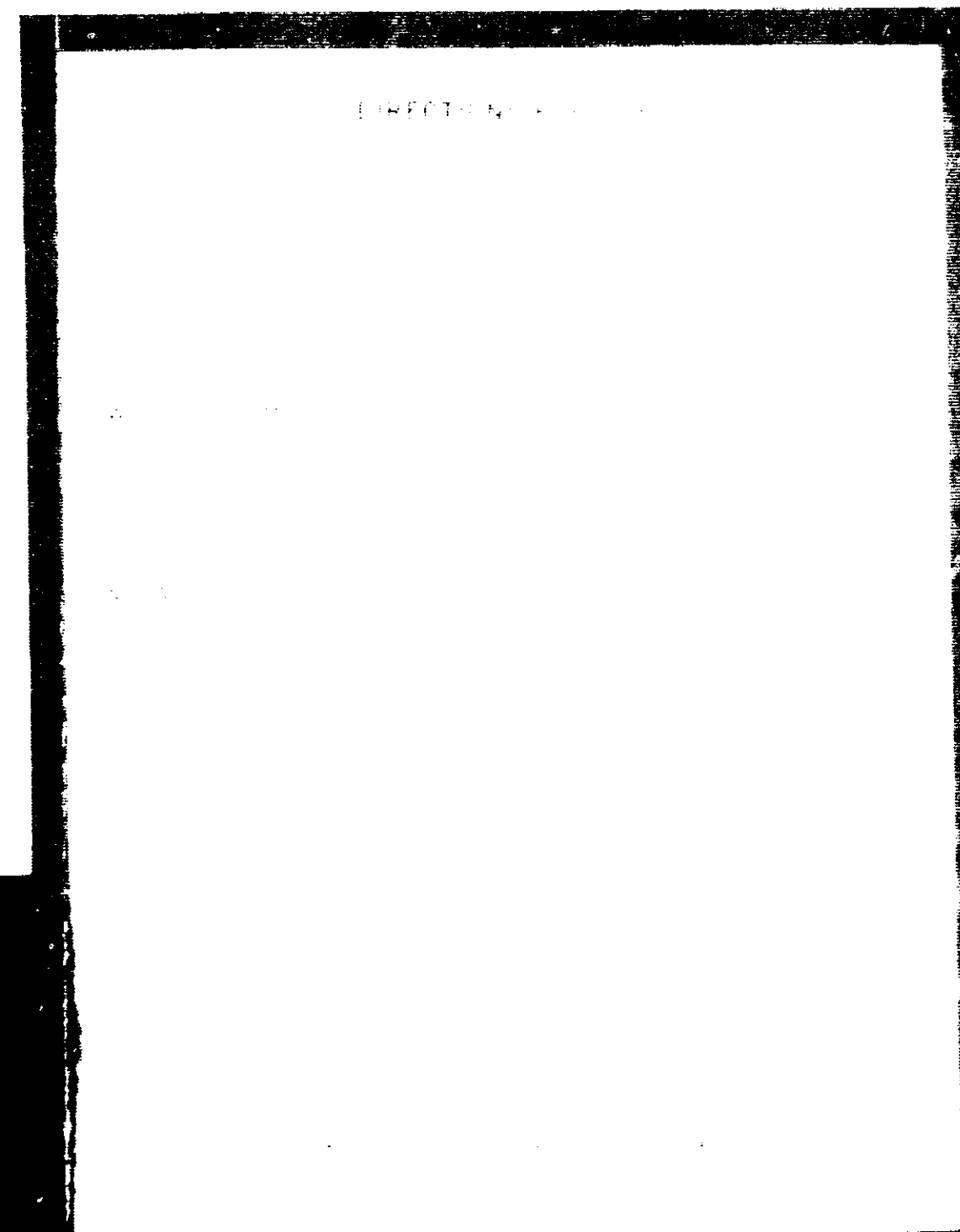
FIRST AID: If swallowed, do NOT induce  
vomiting. CALL A PHYSICIAN.

**USE WITH ADEQUATE VENTILATION**

NAVICOTE 1000

GREEN ANTIFOULING PAINT

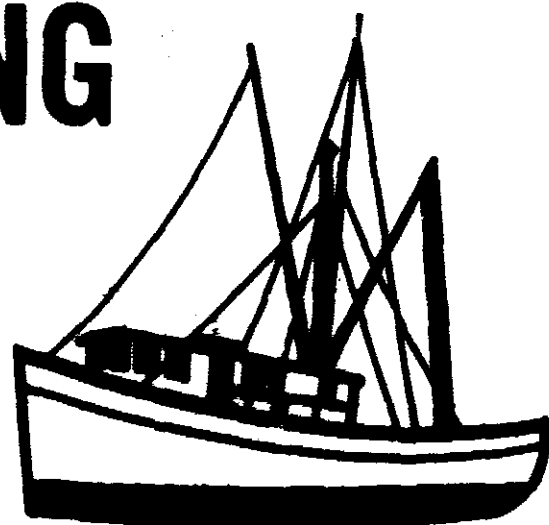
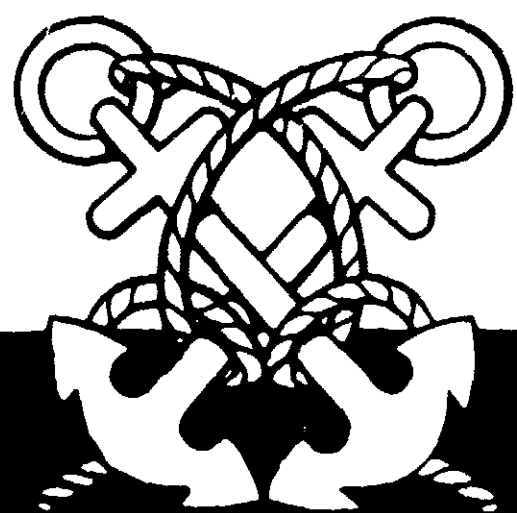
MD-3558



ONE U.S. GALLON

# NAVICOTE<sup>®</sup>

## ANTI/FOULING



**NAVICOTE<sup>®</sup> 1000**  
GREEN ANTI-FOULING PAINT  
**MD-3558**

### **WARNING!** **CONTAINS XYLOL, BUTYL ALCOHOL** **AND CUPROUS OXIDE**

DO NOT USE, POUR, SPILL OR STORE NEAR HEAT OR OPEN FLAME. Avoid breathing of vapor or spray mist. Avoid contact with skin. Do not take internally. Close container after using. Do not reuse empty container. Destroy it by perforating or crushing. Bury or discard in a safe place.

**FIRST AID:** If swallowed, do NOT induce vomiting. CALL A PHYSICIAN.

**USE WITH ADEQUATE VENTILATION**

### **DIRECTIONS FOR USE**

1. Thoroughly clean the surface to be painted. Remove all dirt, grease, oil, and old paint. Wash with water and soap, then rinse with clean water. Dry thoroughly.

2. Apply the paint with a brush or spray gun. Apply in two coats, allowing the first coat to dry thoroughly before applying the second coat. Apply a third coat if necessary. Allow the paint to dry thoroughly before use.

**WOOD BOTTOMS** - Apply the paint to the hull of the vessel. Allow the paint to dry thoroughly before use. The paint will protect the hull from fouling and will last for several years.

**METAL BOTTOMS** - Apply the paint to the hull of the vessel. Allow the paint to dry thoroughly before use. The paint will protect the hull from fouling and will last for several years.

**FIBERGLASS BOTTOMS** - Apply the paint to the hull of the vessel. Allow the paint to dry thoroughly before use. The paint will protect the hull from fouling and will last for several years.

**NOTE:** The paint is not recommended for use on the interior of the vessel. It is also not recommended for use on the exterior of the vessel if the vessel is to be used in salt water.

NAF 8850-601A-1  
A Product of  
**DEVOE & RAYNOLDS CO., INC.**  
Newark, N. J. • San Francisco, California • New Orleans, Louisiana  
07105 94104 70117