



U.S. ENVIRONMENTAL PROTECTION AGENCY
Office of Pesticide Programs
Registration Division (H7505C)
401 "M" St., S.W.
Washington, D.C. 20460

EPA Reg. Number:

Date of Issuance:

9444-197

MAY 08 1998

Term of Issuance: Conditional

NOTICE OF PESTICIDE:

- Registration
- Reregistration

Name of Pesticide Product:

Country-Vet Farm Dairy-
-CV-40:1D Insect Spray

(under FIFRA, as amended)

Name and Address of Registrant (include ZIP Code):

Waterbury Companies Inc.
P.O. Box 640
Independence, LA 70443

Note: Changes in labeling differing in substance from that accepted in connection with this registration must be submitted to and accepted by the Registration Division prior to use of the label in commerce. In any correspondence on this product always refer to the above EPA registration number.

On the basis of information furnished by the registrant, the above named pesticide is hereby registered/reregistered under the Federal Insecticide, Fungicide and Rodenticide Act.

Registration is in no way to be construed as an endorsement or recommendation of this product by the Agency. In order to protect health and the environment, the Administrator, on his motion, may at any time suspend or cancel the registration of a pesticide in accordance with the Act. The acceptance of any name in connection with the registration of a product under this Act is not to be construed as giving the registrant a right to exclusive use of the name or to its use if it has been covered by others.

This product is conditionally registered in accordance with FIFRA sec. 3(c)(7)(A) provided that you:

1. Submit and/or cite all data required for registration/ reregistration of your product under FIFRA sec. 3(c)(5) when the Agency requires all registrants of similar products to submit such data; and submit acceptable responses required for reregistration of your product under FIFRA section 4.
2. Make the following label changes:
 - a. Revise the EPA Registration Number to read, "EPA Reg. No. 9444-197".
 - b. Ingredient labeling should be changed to add "Contains Petroleum Distillates."
 - c. Signal Word: "Caution"

Signature of Approving Official:

Marion Johnson /PM/IB/RD

Date:

MAY 08 1998

d. Revise the "PRECAUTIONARY STATEMENTS" to read:

Harmful if absorbed through skin or inhaled. Avoid contact with eyes, skin or clothing. Avoid breathing spray mist. Wash thoroughly with soap and water after handling. Remove contaminated clothing and wash clothing before reuse.

e. Revise the "STATEMENT OF PRACTICAL TREATMENT" to read:

IF SWALLOWED: Call a physician or Poison Control Center. Do not induce vomiting. Do not give anything by mouth to an unconscious person. Avoid alcohol.

IF ON SKIN: Wash with plenty of soap and water. If symptoms persist get medical attention.

IF INHALED: Remove victim to fresh air. If not breathing, give artificial respiration, preferably mouth-to-mouth. Get medical attention.

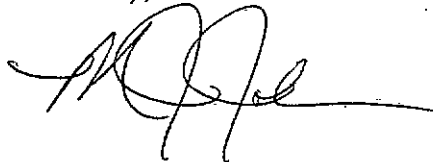
The label should include the following guidance "May pose an aspiration pneumonia hazard"

3. Submit two copies of the revised final printed label for the record.

If these conditions are not complied with, the registration will be subject to cancellation in accordance with FIFRA sec. 6(e). Your release for shipment of the product constitutes acceptance of these conditions.

A stamped copy of the label is enclosed for your records.

Sincerely,



Marion J. Johnson, Jr.
Product Manager (10)
Insecticide Branch
Registration Division (7505C)

Enclosure

ACCEPTED
with COMMENTS
In EPA Letter Dated:
MAY 08 1998

3 9 3

Under the Federal Insecticide,
Fungicide, and Rodenticide Act,
as amended, for the pesticide
registered under EPA Reg. No.
9444-197



**PRECAUTIONARY STATEMENTS
HAZARDS TO HUMANS & DOMESTIC ANIMALS
CAUTION**

Harmful if swallowed. Avoid breathing of vapor. Avoid contact with skin and eyes. In case of contact, immediately flush eyes with plenty of water. Wash skin with warm water and soap. Get medical attention if irritation persists. Do not contaminate food or foodstuffs. Do not remain in treated areas. Vacate premises for at least 15 minutes after spraying. Ventilate the area after treatment is completed and before re-entering. Wash thoroughly after using and before smoking or eating. Do not contaminate water, food, or foodstuffs. Remove all pets and birds. Cover fish tanks or remove before spraying.

STATEMENT OF PRACTICAL TREATMENT

If Swallowed: Call a physician or Poison Control Center immediately. Gastric lavage is indicated if material was taken internally. Do not induce vomiting. Vomiting may cause aspiration pneumonia.
If Inhaled: Remove patient to fresh air. Apply artificial respiration if indicated.
If On Skin: Remove contaminated clothing and wash affected skin areas with soap and water. Get medical attention if irritation persists.
If In Eyes: Flush eyes with plenty of water. Get medical attention if irritation persists.

ENVIRONMENTAL HAZARDS

This product is toxic to fish, birds, and other wildlife. Do not apply directly to water, or to areas where surface water is present or to intertidal areas below the mean high water mark. Apply this product only as specified on this label.

PHYSICAL OR CHEMICAL HAZARDS

Flammable. Contents under pressure. Keep away from heat, sparks and open flame. Do not puncture or incinerate container. Exposure to temperatures above 130°F may cause bursting. Do not spray on plastic, painted or varnished surfaces or directly into electronic equipment such as radios, TVs, computers, etc.

DIRECTIONS FOR USE

It is a violation of Federal law to use this product in a manner inconsistent with its labeling. Hold container upright with nozzle away from you. Press valve down and spray as directed. To avoid staining of fabrics or surfaces, do not spray at close range.

When using this product in an enclosed area, such as a milkroom, barn or stable, remove animals before spraying.

DAIRY FARM USE: Milking Parlor and Milkroom—Close all windows and doors. Direct spray upwards, spraying for 1-3 seconds per 1,000 cubic feet of space. Do not remain in treated areas. Ventilate after treatment. Cover milking utensils and milk to prevent contamination from spray and dead or falling insects.

ANIMAL USE: (Do not spray sick animals); Thoroughly spray entire animal from approximately 2 feet distance. Do not spray directly toward animal's eyes. Spot treat withers, shoulders and back where saliva accumulates from head tossing.

BEEF CATTLE OPERATIONS: In barns, close all windows and doors. Spray at the rate of 1-2 seconds per 1,000 cubic feet of space. Do not remain in treated area. After 15 minutes, ventilate the area. Repeat application as necessary.

ANIMAL USE: For animal application, thoroughly spray entire animal from approximately 2 feet distance. Do not spray directly toward animal's face or eyes. Repeat application daily or as necessary.

STANCHION BARN USE: Walk behind animals and direct spray over backs, allowing 1 second per animal. For most effective results, apply each morning.

HORSE BARN OR STABLES: In horse and pony barns, close all windows and doors. Spray at the rate of 1-2 seconds per 1,000 cubic feet of space. Do not remain in treated area. After 15 minutes, ventilate the area. Repeat the application as necessary.

ANIMAL USE: For animal application, lightly mist over back of horses and ponies from a distance of 2 feet. Do not spray directly toward the animal's face or eyes. Repeat application daily or as necessary.

HOG OPERATIONS: In hog houses, close all doors and windows. Spray at the rate of 1-2 seconds per 1,000 cubic feet of space. Do not remain in treated area. After 15 minutes, ventilate the area. Repeat application as necessary.

ANIMAL USE: For animal application, direct spray over back of hogs and spray for 1-2 seconds per hog. Do not spray directly toward the animal's face or eyes. Repeat application daily or as necessary.

POULTRY OPERATIONS: Use only in empty poultry houses (when birds are not present). In poultry houses, close all windows and doors. Spray roosts, walls, nests, and cages thoroughly. Spray at the rate of 1-2 seconds per 1,000 cubic feet of space. Do not remain in treated areas. Ventilate after treatment. Treat daily or as necessary.

MUD DAUBER AND WASP NEST: Spray mist directly on insects and their nests from approximately 2 ft. distance. Contacted insects will fly away from fog. Applications should be made in late evening when insects are at rest. Spray into hiding and breeding places contacting as many insects as possible.

FLEAS: General Volumetric Treatment: Hold aerosol 36" above floor and direct spray toward floor and lower walls at a rate of 10 seconds per 100 sq. ft. making sure that all floor areas are contacted. Change litter before application. Keep area closed for 15 minutes. Remove animals before spraying. Open and ventilate before reoccupying. Repeat treatment after 7 days or as necessary.

KENNELS AND CATTERIES: Remove animals before spraying. Ventilate after treatment is completed.

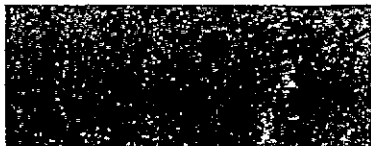
OUTDOOR GROUND APPLICATION: Flies, Gnats, and Mosquitoes in open areas near buildings and in campgrounds. Best results are obtained when wind speed is five (5) MPH or less. Apply at a rate of 60-80 seconds per acre. Spray in wide swaths across area to be treated. Allow spray drift to penetrate dense foliage. Repeat treatment as necessary.

STORAGE & DISPOSAL

Do not contaminate water, food or feed by storage or disposal.
STORAGE: Store in a cool, dry area away from heat or open flame.
DISPOSAL: This container may be recycled in the few but growing number of communities where steel aerosol can recycling is available. Before offering for recycling, empty the can by using the product according to the label. DO NOT PUNCTURE! If recycling is not available, wrap the container and discard in the trash.



Manufactured by
**WATERBURY
COMPANIES, INC.**
P. O. Box 1812
Waterbury, CT 06722
Made in USA



**COUNTRY VET
Farm Dairy
CV-40-1D
Insect Spray**

KILLS and REPELS: Flies, Mosquitoes, Small Flying Moths, Wasps, Hornets, Gnats, Cockroaches, Ants, Fleas, Crickets, Spiders, Barn Flies, Deer Flies, Stable Flies, Horn Flies, Horse Flies, House Flies, Face Flies, Fruit Flies, Lice, Centipedes, Millipedes, Clover Mites, Cluster Flies and Mud Daubers

FOR USE in Beef Cattle Operations, Dairy Farms (including Milk House, Milk Parlor, Loafing Sheds, and Holding Lot), Hog Operations, Kennels, Barns, Stables, Farms, Animal Quarters, Milkrooms, and Poultry Houses

CONTAINS NO CFCs OR OTHER OZONE DEPLETING SUBSTANCES. FEDERAL REGULATIONS PROHIBIT CFC PROPELLANTS IN AEROSOLS.

ACTIVE INGREDIENTS:

Pyrethrins	0.50%
* Piperonyl Butoxide, technical	2.50%
INERT INGREDIENTS	97.00%
	100.00%

* Equivalent to 2.00% (butylcarbityl) (6-propylpiperonyl) ether and 0.50% related compounds.

**KEEP OUT OF REACH OF CHILDREN
CAUTION**

See Back Panel for Additional Precautionary Statements.

EPA Reg. No. 9444-*ROT*

EPA Est. No. 9444-LA-1

NET WEIGHT 24 oz / 680 g