

PRECAUTIONARY STATEMENTS
Hazards to Humans & Domestic Animals

CAUTION

Harmful if swallowed or absorbed through skin. Avoid breathing of vapors or spray mist. Avoid contact with skin and eyes. In case of contact, immediately flush eyes or skin with plenty of water. Obtain medical attention if irritation persists.

Do not apply directly to food. In commercial food handling facilities, cover or remove any food and food processing equipment during application. Do not apply while food processing is underway. After space spraying food processing plants, wash all equipment, benches, shelving, etc. where exposed food will be handled, with potable water. In the home, all food processing surfaces and utensils should be covered during treatment or thoroughly washed before use.

Remove pets, birds and cover fish aquariums before spraying

ENVIRONMENTAL HAZARDS

This product is toxic to fish, birds and other wildlife. DO NOT APPLY DIRECTLY TO WATER. Do not contaminate water by cleaning of equipment or disposal of wastes. Apply this product only as specified on this label.

PHYSICAL OR CHEMICAL HAZARDS

Contents under pressure. Do not puncture or incinerate container. Do not use or store near heat or open flame. Exposure to temperatures above 130°F may cause bursting.

DIRECTIONS FOR USE

It is a violation of Federal law to use this product in a manner inconsistent with its labeling.

Hold container upright with nozzle away from you. Press valve down and spray as directed. Keep nozzle at least 36 inches from surfaces of fabrics to avoid possible staining.

STORAGE AND DISPOSAL

Storage: Store in a cool area away from heat and open flame.

Disposal: Do not re-use empty container. Wrap container and put in trash collection.

Flies, Mosquitoes, Gnats, Wasps and Flying Nests: Close all doors and windows and spray room at the rate of 2 to 3 seconds per 1000 cubic feet. Direct spray to all parts of the room, especially windows and other light sources which attract these insects. Keep nozzle in constant motion. Keep room closed for 10 to 15 minutes after treatment. Repeat treatment as necessary.

Roaches, Water Bugs, Silverfish, Crickets, Spiders, Centipedes, and Saw Bugs: Spray into hiding places such as cracks and crevices, behind sinks, cabinets, along baseboards and floors, around drains, and plumbing, hitting insects with spray whenever possible. Repeat treatment as necessary.

Ants: Spray trails, nests, and points of entry. Spray on ants where possible. Repeat as necessary.

Indian Meal Moth, Angoumois Grain Moth: Close doors and windows, direct spray into all parts of room, especially around stored food product containers, pallets, and darkened areas. Spray 7 to 10 seconds for each 1000 cubic feet of space. Keep area closed for 15 minutes following treatment. Repeat application weekly as needed.

Exposed stages of Confused Flour Beetle, Saw Toothed Grain Beetle, Red Flour Beetle, Rice Weevil, Granary Weevil, Grain Mites: Spray into cracks and crevices, processing and handling equipment, around cartons or containers and other areas where these insects tend to congregate. Spray 30 seconds for each 100 square feet of surface. Keep area closed for 45 minutes to 1 hour after treatment. Repeat applications as necessary.

Carpet Beetles: Spray directly on beetles, floors, baseboards, shelves, and carpets. Repeat treatment as necessary.

Bedbugs: Spray mattresses, particularly around tufts and seams. Take beds apart and spray into all joints. Treat baseboards, molding and floors. Repeat treatment as necessary.

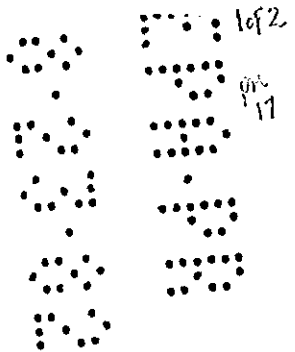
For the Control of Garden Insects: For use on roses, dahlias, asters, and other ornamentals to kill Japanese beetles, hollyhock beetles, as well as aphids, exposed thrips and spider mites.

May be used on plants, as a multi-purpose spray to small gardens, and for spot treatment of incipient insect infestations to prevent spreading in large garden areas.

May also be used on other plants, such as African violets, asters, zinnias, begonias, camellias, carnations, chrysanthemums, dahlias, delphiniums, dogwood, English ivy, geraniums, luscias, geraniums, cranberries, grape vine, Kentia palm, laurel, marigolds, rhododendrons, roses, rubber plants, snapdragons, stocks, wandering Jew and zinnias.

Effective when used as directed against aphids, spider mites, exposed thrips, leaf bugs, Japanese beetles, pavement ants, clover mites and army worms. When spraying plants, do not operate closer than 18 inches. Use sweeping motion. Spray in one second bursts. Do not wet foliage or blossoms.

944-21



1 of 2
944-21

PURGE

MULTI-USE INSECTICIDE

Super Strength

Highly Active Solvent System - Non-Aqueous for Control of Residential, Industrial & Garden Insect Pests
KILLS: Houseflies, Mosquitos, Gnats, Wasps, Small Flying Moths, Barn Flies, Deer Flies, Stable Flies, Horn Flies, Roaches, Water Bugs, Silverfish, Crickets, Spiders, and Other Insects Listed on Back.

ACTIVE INGREDIENTS

Pyrethrins.....0.30%
*Piperonyl Butoxide Technical.....2.40%
Petroleum Distillate.....1.50%

INERT INGREDIENTS.....95.80%
100.00%

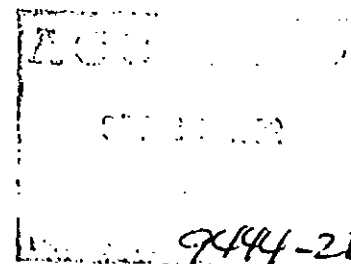
*Equivalent to 2.0% (butylcarbityl)(6-propylpiperonyl)ether and 0.4% of related compounds.

CAUTION: KEEP OUT OF REACH OF CHILDREN
(See additional precautions on back panel.)

Net Weight 16 oz. (453.9 gr.)

E.P.A. Reg. No. 9444-21-AA

E.P.A. Est. No. 9444-LA-1



214-21

252

DAIRY FARM USE: Milking Parlor and Milk Room: Close all windows and doors. Direct spray upwards, spraying for 5-10 seconds for 1,000 cu. ft. of space. Do not remain in treated areas. Ventilate after treatment. Cover milking utensils and milk to prevent contamination from spray or drifting insects.

ANIMAL USE: Thoroughly spray entire animal from approximately 2 ft. distance. Do not spray directly toward animal's eyes. Treat withers, shoulders, and back where saliva accumulates from head tossing.

STANCHION BARN USE: Walk behind animals and direct spray over backs, allowing 5 seconds per animal. For most effective results, apply each morning.

POULTRY OPERATIONS: In poultry houses, close all windows and doors. Spray at the rate of 5-10 seconds per 1,000 cu. ft. of space. Do not remain in treated areas. After 15 minutes ventilate the area. Treat daily or as necessary.

ANIMAL USE: For animal application, direct spray over backs of hogs and spray for 5 seconds per hog. Do not spray directly toward the animal's face or eyes. Repeat application daily or as necessary.

HORSE BARRIS OR STABLES: In horse and pony barns, close all windows and doors. Spray at the rate of 5-10 seconds per 1,000 cu. ft. of space. Do not remain in treated area. After 15 minutes ventilate the area. Repeat the application as necessary.

ANIMAL USE: For animal application, lightly mist over backs of horses and ponies from a distance of 2 ft. Do not spray directly toward the animal's face or eyes. Repeat application daily or as necessary.

BEEF CATTLE OPERATIONS: In barns, close all windows and doors. Spray at the rate of 5-10 seconds per 1,000 cu. ft. of space. Do not remain in treated area. After 15 minutes ventilate the area. Repeat application as necessary.

ANIMAL USE: For animal application, thoroughly spray entire animal from approximately 2 ft. distance. Do not spray directly toward animal's face or eyes. Repeat application daily or as necessary.

FOOD PROCESSING PLANT USE: To kill roaches, spiders, silverfish, wasps, hornets, crickets: Spray the insect directly when possible. Spray all probable hiding places such as cracks, crevices, baseboards, sinks, cabinets, shelves, under appliances, in food storage areas. To kill Flies, Mosquitos, Gnats, Small Flying Moths: Close all windows and doors. Direct spray upward, spraying for 2-3 seconds for 1,000 cubic feet of space. Do not remain in treated areas. Ventilate after treatment.

HOME USE: To kill roaches, spiders, silverfish, wasps, hornets, crickets: Spray the insect directly when possible, and spray all probable hiding places such as cracks, crevices, baseboards, sinks, cabinets, shelves and under appliances. Repeat as necessary. Buyer assumes all risks of use, storage or handling of this material not in strict accordance with directions given herewith.

Manufactured by:

CLINE-BUCKNER INC.

Cerritos, CA 90701 and Independence, LA 70443

