

DIRECTIONS FOR USE

Hold container upright with nozzle away from you. Press valve down and spray as directed. Keep nozzle at least 36 inches from surfaces or fabrics to avoid possible staining.

Remove pets, birds, and cover fish aquariums before spraying.

Flies, Mosquitoes, Gnats, Wasps and Flying Moths: Close all doors and windows and spray room at the rate of 2 to 3 seconds per 1000 cubic feet. Direct spray to all parts of the room, especially windows and other light sources which attract these insects. Keep nozzle in constant motion. Keep room closed for 10 to 15 minutes after treatment. Repeat treatment as necessary.

Roaches, Water Bugs, Silverfish, Crickets, Spiders, Centipedes, and Sow Bugs: Spray into hiding places such as cracks and crevices, behind sinks, cabinets, along baseboards and floors, around drains, and plumbing, hitting insects with spray whenever possible. Repeat treatment as necessary.

Ants: Spray trails, nests, and points of entry. Spray on ants where possible. Repeat as necessary.

Indian Meal Moth, Angoumois Grain Moth: Close doors and windows, direct spray into all parts of room, especially around stored food product containers, pallets, and darkened areas. Spray 7 to 10 seconds for each 1000 cubic feet of space. Keep area closed for 15 minutes following treatment. Repeat application weekly or as needed.

Exposed stages of Confused Flour Beetle, Saw Toothed Grain Beetle, Red Flour Beetle, Rice Weevil, Granary Weevil, Grain Mites: Spray into cracks and crevices; processing and handling equipment, around cartons or containers and other areas where these insects tend to congregate. Spray 30 seconds for each 100 square feet of surface. Keep area closed for 45 minutes to 1 hour after treatment. Repeat applications as necessary.

Carpet Beetles: Spray directly on beetles, floors, baseboards, shelves, and carpets. Repeat treatment as necessary.

Bedbugs: Spray mattresses, particularly around tufts and seams. Take beds apart and spray into all joints. Treat baseboards, molding and floors. Repeat treatment as necessary.

Fleas: Spray sleeping quarters, bedding, floor and floor covering where pets are kept. Repeat as necessary. Use only a recommended pet spray on pets.

For the Control of Garden Insects: For use on roses, dahlias, asters and other ornamentals to kill Japanese beetles hit by spray, as well as aphids, exposed thrips and spider mites.

May be used on plants, as a multi-purpose spray in small gardens, and for spot treatment of incipient insect infestations to prevent spreading in large garden areas.

May also be used on other plants, such as African violets, asters, azaleas, begonias, camellias, carnations, chrysanthemums, dahlias, delphiniums, dogwood, English ivy, euonymus, fuschia, geraniums, crassula, grape vine, Kentia palm, laurel, marigolds, rhododendrons, roses, rubber plants, snapdragons, stocks, wandering Jew and zinnias.

Effective when used as directed against aphids, spider mites, exposed thrips, lace bugs, Japanese beetles, pavement ants, clover mites and army worms.

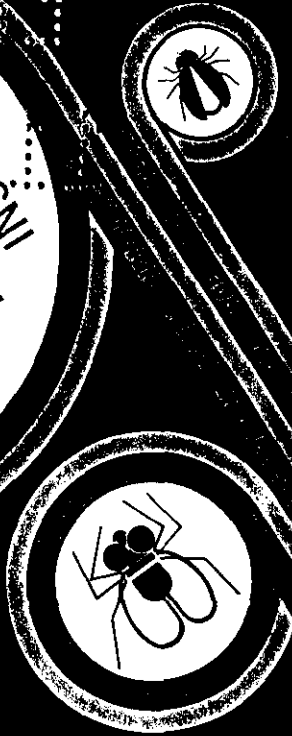
When spraying plants, do not operate closer than 18 inches. Use sweeping motion. Spray in one second bursts. Do not wet foliage or blossoms.

Manufactured by

CLINE-BUCKNER, INC.

Cerritos, Calif. 90701

PURTRON
AEROSOL
MULTI-PURPOSE
INSECTICIDE



WARNING: Keep out of reach of children.

ACTIVE INGREDIENTS

Pyrethrins 0.3%
Piperonyl Butoxide, Technical 2.4%
Petroleum Distillate 1.5%

INERT INGREDIENTS

Equivalent to 2.0% (butylcarbonyl) (6-propylpiperonyl) ether and to 0.4% of related compounds. 95.8%

CAUTION: Harmful if swallowed. Avoid contamination of feed and foodstuffs. Avoid breathing of vapor. Avoid contact with skin.

When using this product in food processing plants, foods should be removed or covered during treatment. All food processing surfaces should be covered during treatment or thoroughly cleaned before using. When using this product in these areas, apply only when facility is not in operation.

Do not remain in treated areas and ventilate the area after treatment is completed.

WARNING: Flammable! Contents under pressure. Do not use near fire, sparks, or flame. Do not puncture or incinerate container. Exposure to temperatures above 130 F may cause bursting.

Net Contents: 1 Pound 4 Ounces

EPA 9444-21

9444-21

11-29-72

10/2

20/2

cc cc cc cc
cc cc cc cc
cc cc cc cc
cc cc cc cc

cc cc cc cc
cc cc cc cc
cc cc cc cc
cc cc cc cc

re-11116
NOV 29 1972
ACCEPTED
FUNGICIDE AND RODENTICIDE ACT
ED. ORDER NO. 11111
SUBJECT: COMMENTS