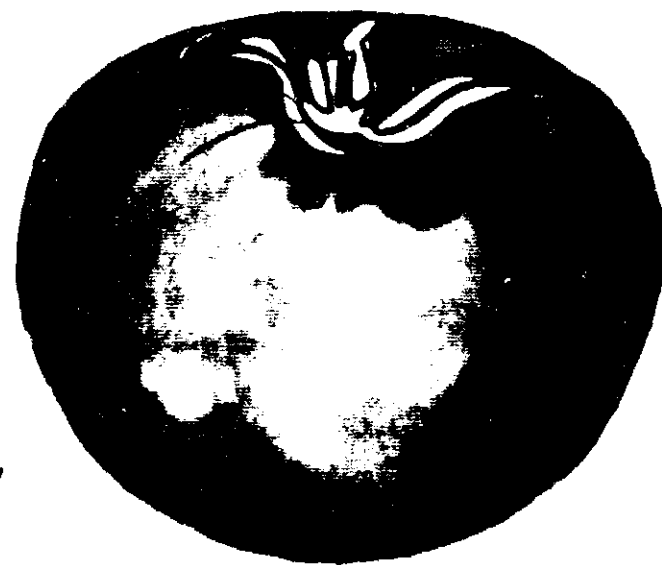


TOMATO AND VEGETABLE DUST

IN SQUEEZE DUSTER

CONTAINS: DITHANE M-45[®],
KELTHANE[®],
SEVIN[®]



CAUTION: Keep Out of Reach of Children.

See back panel for additional cautions.

EPA NO. 9404 19

Product No. 2386

MANUFACTURED BY
CHASE & COMPANY



THIS CONTAINER IS NOT FULL BUT
CONTAINS PROPER NET WEIGHT.

DIRECTIONS

Do not reuse container. Destroy when empty.

Lift hinged cap and squeeze container to dust.

Material can be dusted from any position.

For best results dust in early morning or late evening when the temperature is low and the air is still. Apply so all exposed parts of plants are contacted, especially upper and lower leaf surfaces. Repeat at 5 to 10 days intervals or as necessary.

TOMATOES & VEGETABLES: Apply dust when new growth starts and repeat at weekly intervals throughout growing season to control aphids, mites, flea beetles, fruit worm and anthracnose, early and late blight on tomatoes and potatoes; mites, squash bug, anthracnose and downy mildew on summer squash and cucumbers. Dust to within 7 days of harvest. Remove any residue at harvest by washing edible portions. Do not feed vines to livestock.

ORNAMENTALS: Apply dust to control aphids, mites, leafhoppers, bagworm, leaf caterpillars, lace bug on shade trees and ornamentals. Dust when insects appear and repeat at two week intervals or as necessary.

ROSES & FLOWERS: Dust when new growth starts and repeat at weekly intervals to control aphids, exposed thrips, leafhoppers, rose chafers, adult Japanese beetle, red spider and two-spotted spidermites and the common diseases: Black spot on roses, powdery mildew on asters, azaleas, chrysanthemums, gladiolus, hollyhock and roses; anthracnose on hollyhock; leaf spot on roses, snapdragon and chrysanthemums.

CAUTION: Harmful if swallowed or inhaled. Avoid breathing dust. May cause irritation of nose, throat, eyes and skin. In case of contact with eyes, get medical attention. Avoid contact with skin. Wash thoroughly after handling. Avoid contamination of feed and foodstuffs. Do not use on household pets or humans. Keep out of reach of children. Do not use within 10 days of an oil spray or when temperatures are in excess of 85° F. Store in a cool place. Keep container closed when not in use.

Do not apply when weather conditions favor drift from areas treated. Do not contaminate water by cleaning of equipment or disposal of wastes. Apply this product only as specified on this label.

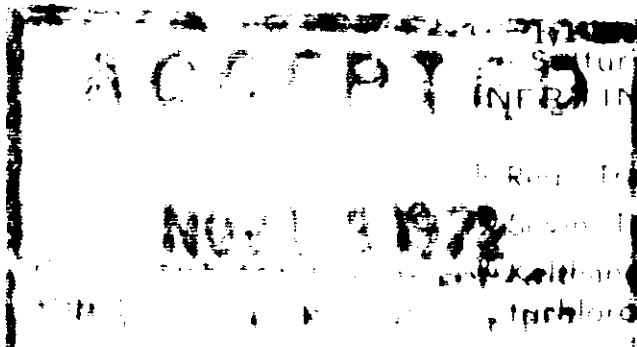
"This product is highly toxic to bees exposed to direct treatment or residues on crops."

WARRANTY:

Conditions of use are beyond Seller's Control. Seller's liability is limited to products replacement or purchase price refund. Seller makes no warranty, express or implied, concerning products use beyond that on label.

ACTIVE INGREDIENTS:

Carbaryl (1-Naphthyl N-methyl carbamate) 20.00%
Co-ordination product of Zinc, Manganese, Manganese Ethylenebisdiethylenetriamine 1.00%
Metallic Manganese 1.00%
Metallic Zinc 1.00%
Ethylene Bisdiethylenetriamine (C₁₂H₂₄N₆) 1.00%



NET WEIGHT 10 OZ

TOMATO AND VEGETABLE DUST

**SQUEEZE
MASTER**



**CONTAINS: DITHANE M-45[®],
KELTHANE[®],
SEVIN[®]**

CAUTION: Keep Out of Reach of Children.

See back panel for additional cautions.

EPA NO. 9404-19

Product No. 2386

MANUFACTURED BY
CHASE & COMPANY
SANFORD, FLORIDA 32771



THIS CONTAINER IS NOT
CONTAINS PROPER NE

ORNAMENTALS: Apply dust to control aphids, mites, leafhoppers, bagworm, tent caterpillars, lace bug on shade trees and ornamentals. Dust when insects appear and repeat at two week intervals or as necessary.

ROSES & FLOWERS: Dust when new growth starts and repeat at weekly intervals to control aphids, exposed thrips, leafhoppers, rose chafers, adult Japanese beetle, red spider and two-spotted spidermites and the common diseases - Black spot on roses, powdery mildew on asters, azaleas, chrysanthemums, gladiolus, hollyhock and roses; anthracnose on hollyhock; leaf spot on roses, snapdragon and chrysanthemums.

CAUTION: Harmful if swallowed or inhaled. Avoid breathing dust. May cause irritation of nose, throat, eyes and skin. In case of contact with eyes, get medical attention. Avoid contact with skin. Wash thoroughly after handling. Avoid contamination of feed and foodstuffs. Do not use on household pets or humans. Keep out of reach of children. Do not use within 10 days of an oil spray or when temperatures are in excess of 85° F. Store in a cool place. Keep container closed when not in use.

Do not apply when weather conditions favor drift from areas treated. Do not contaminate water by cleaning of equipment or disposal of wastes. Apply this product only as specified on this label.

"This product is highly toxic to bees exposed to direct treatment or residues on crops."

WARRANTY:

Conditions of use are beyond Seller's Control. Seller's liability is limited to products replacement or purchase price refund. Seller makes no warranty, express or implied, concerning products use beyond claims on label.

ACTIVE INGREDIENTS:

- Carbaryl (1-Naphthyl N-methylcarbamate)..... 5.00%
- Co-ordination product of Zinc ion and
Manganese Ethylene Bisdithiocarbamate..... 6.00%
- Metallic Manganese..... 1.20%
- Metallic Zinc..... .15%
- Ethylene Bisdithiocarbamate
ion (C₄H₆N₂S₄)..... 4.65%

- 1,1,1-(Chlorophenyl)-2,2,2-trichloroethanol..... 1.99%
- Sulfur..... 20.00%
- INERT INGREDIENTS..... 67.50%**

® Reg. Trade Mark Rohm & Haas Co.

® Sevin Trademark of Union Carbide Corp. or its subsidiary.

® Kelthane is the registered Trademark for 1,1,1-trichloroethane.

® trichloroethanol.

NET WEIGHT 10 OZ.

