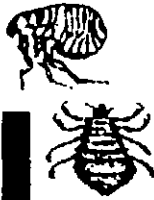


KIMBERLY-CLARK flea & tick wipes DOGS & CATS



Kills fleas, lice and ticks
Temporarily repels gnats, flies, mosquitoes
Keep out of the reach of children
Caution See back panel for precautionary statements
Net contents 5.85 oz. (166 grams)
30 wipes 6" x 8"

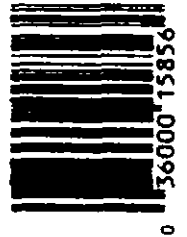


*Equivalent to min. 0.63% (bunkarbaryl)
(0 propylpiperonyl ether and 0.160% related compounds)
Contains petroleum distillates

ACTIVE INGREDIENTS
Pyrethrins 0.15%
Piperonyl Butoxide Technical* 1.50%
N-octyl bicycloheptene dicarboximide 0.33%
Inert ingredients 98.02%

Directions for use: It is a violation of Federal law to use this product in a manner inconsistent with its labeling. **Dogs and Cats:** To kill Fleas, Lice and Ticks, apply a light coating sufficient to wet the fur taking care not to get product in animal's eyes. Rub the wipe sufficiently around head, ears, chest and nose. Then apply as needed to the neck, middle and hind quarters, finishing legs last. For best results and penetration apply treatment using the wipe against the natural lay of the hair. On long haired animals repeat the treatment as necessary to insure the hair is thoroughly saturated. **Puppies and Kittens:** Treat same as cats and dogs except for nursing puppies and kittens, apply a light coating along animal's back and rub into animal's fur. **Pet Sleeping Quarters:** Wipe around baseboards, windows, door frames, wall cracks and local area of floors. If Mosquitoes, Gnats or Flies are present, repeat as needed. Concurrent treatment of animals is recommended. **Horses:** To repel Gnats, Flies and Mosquitoes, apply a light coating sufficient to wet surface of the hair. To control Stable Flies, Horse Flies, Deer Flies and Face Flies, apply as needed sufficient to wet the hair thoroughly. Repeat treatment as needed. **PRECAUTIONARY STATEMENTS —HAZARDS TO HUMANS & DOMESTIC ANIMALS. CAUTION: HARMFUL IF SWALLOWED OR INHALED. AVOID BREATHING MIST. AVOID CONTACT WITH EYES. WASH HANDS WITH SOAP AND WATER AFTER USING.** Statement of practical treatment: If swallowed, call physician or Poison Control Center. Give milk or water. Do not induce vomiting because of aspiration hazard. If in eyes, flush with plenty of water. Get medical attention. If on skin, wash off with soap and water. **Environmental hazards:** This product is toxic to fish. Keep out of lakes, ponds, streams, tidal marshes and estuaries. Do not contaminate water by cleaning of equipment or disposal of wastes. **Physical/chemical hazards:** Flammable. Keep away from heat and open flame. **Storage:** Do not store or use near heat or open flame. **Disposal:** Do not reuse empty container. Wrap container in newspaper and put in trash. **Cap Threading Instructions:** Remove entire cap from container. Locate the first wipe in the center of roll. Thread wipe through center of cap. Place screw cap firmly back onto container. Pull wipe up to release.

KIMBERLY-CLARK Kimberly-Clark
ANIMAL Animal Care Products
CARE 1400 Holcomb Bridge Road
PRODUCTS Roswell, GA 30076
Reorder Number 15856.00
Made in the USA EPA Reg. No. 9402-5.
EPA EST NO 11623-GA-1



BLUE RED GREEN GOLD

ACQU...
14 DEC 1994
9402-5

BEST AVAILABLE COPY