

26 JAN 1996

James C. Morgenstern  
Vice President, Safety and Quality Assurance  
Kimberly-Clark  
1400 Holcomb Bridge Road  
Roswell, Georgia 30076

Dear Mr. Morgenstern:

Subject: Revised Labeling  
Kimberly-Clark Fly Repellent Wipes  
EPA Registration Number 9402-4  
Submission Dated August 18, 1995

The labeling referred to above, submitted in connection with registration under the Federal Insecticide, Fungicide, and Rodenticide Act, as amended, is acceptable subject to the comments provided below:

The following language from the proposed labeling must be deleted, "Frequent or prolonged contact may irritate the skin and cause a skin rash (dermatitis)." In place of the above insert, "Prolonged or frequently repeated skin contact may cause allergic reaction in some individuals."

A stamped copy of the labeling is enclosed for your records.

Sincerely,

RPK

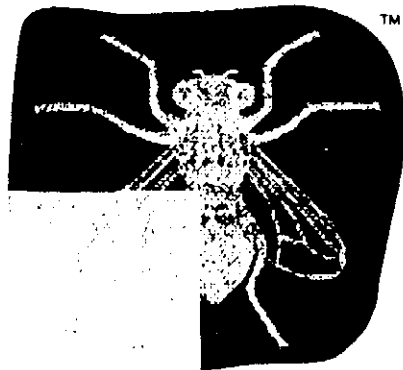
Richard P. Keigwin, Jr.  
Product Manager 10  
Insecticide-Rodenticide Branch  
Registration Division

Enclosure

21/2

KIMBERLY-CLARK®

# FL REPELLENT WIPES™



Recommended for use  
on all horses, ponies, and stable animals  
**Keep out of the reach of children.**

**CAUTION:** See back panel for additional precautions.

Net contents: 5.8 oz. (165 grams) 30 wipes 6" x 8"

**ACTIVE INGREDIENTS:**

Pyrethrins	0.08%
Piperonyl Butoxide, Technical*	0.80%
<b>INERT INGREDIENTS</b>	<b>99.12%</b>
<b>Total</b>	<b>100.00%</b>

\*Equivalent to min. 0.639% (butylcarbityl) (6-propylpiperonyl) ether and 0.160% related compounds. Contains petroleum distillates.



**DIRECTIONS FOR USE:** It is a violation of Federal law to use this product in a manner inconsistent with its labeling. **Cap Threading Instruction:** Remove cap from container. Remove liner. Locate the first wipe in the center of the container. Pull wipe up at an angle to remove. **Use:** Apply to all exposed areas of infested animals from Horn Flies, House Flies, Mosquitoes, Fleas, Ticks, and Lice. Apply a light coating sufficient to wet the tips of the hair. To control Starlings, House Flies, and Deer Flies, rub the wipe sufficiently to wet the hair, but not to saturate. Recommended for use on face and around eyes and ears. Repeat application to give continued protection. **To control blood-sucking Lice:** Apply to all exposed infested areas. Repeat every two or three weeks as required. Wash thoroughly after application. **PRECAUTIONARY STATEMENTS - HUMAN:** IRRITANT. IF SWALLOWED, FREQUENT OR PROLONGED CONTACT MAY IRRITATE THE SKIN AND CAUSE A SKIN RASH (DERMATITIS). DOMESTIC ANIMALS: IRRITANT. CONTAMINATION OF FEED AND FOODSTUFFS. FOODS SHOULD BE REPEATEDLY WASHED AND COVERED DURING TREATMENT. DO NOT USE ON OLD, SICK, OR WEAK ANIMALS. DO NOT APPLY TO ANIMALS' GENITALIA OR GET INTO EYES. **Statement of practical treatment: If on skin:** wash with soap and water. Remove victim to fresh air. Apply artificial respiration if indicated. If on eyes: with plenty of water. Get medical attention if irritation persists. If on mouth: induce vomiting. Call a physician or Poison Control Center. **Enviro:** Avoid. This product is toxic to fish. Keep out of lakes, streams or ponds. Do not pollute water by disposal of wastes. **STORAGE AND DISPOSAL:** Do not contaminate water, food or feed by storage or disposal. **Storage:** Store in a cool, dry place away from heat or open flame. **Disposal:** Do not reuse container. Empty container and pouch or container in newspaper and place in trash. Contact your State or Local disposal authorities for approved alternative procedures.

KIMBERLY-CLARK Kimberly Clark Corporation  
**ANIMAL CARE PRODUCTS** Animal Care Products Group  
 1400 Holcomb Bridge Road  
 Roswell, GA 30076 (800) 310-7111  
 Reorder Number 15854.00  
 EPA REG. NO. 9402-4  
 EPA EST. NO. 11623 GA-1

Made in the U.S.A. TM trademark of Kimberly-Clark Corporation, Roswell, GA 30076  
©1994 Kimberly-Clark Corporation. All Rights Reserved. EP013, 51

Approved with In EPA

26 JAN

Under the Fungicide, as amended, registered under

9402