

Reg # 9402-4

PM-10

19 3

**KIMBERLY-CLARK™**  
**FLY**  
**REPELLENT WIPES™**



Recommended for use  
 on all horses, ponies, and stable animals.  
**Keep out of the reach of children.**

**CAUTION.** See back panel for additional precautions.  
 Net contents: 5.8 oz. (165 grams) 30 wipes 6" x 8"

<b>ACTIVE INGREDIENTS:</b>	
Pyrethrin	0.08%
Piperonyl Butoxide, technical*	0.80%
<b>INERT INGREDIENTS</b>	
total	99.12%
	100.00%

\*Equivalent to 100% (0.039% (butylcarbitol) (6-propylpiperonyl) ether and 0.160% related compounds. Contains petroleum distillates

 Kimberly-Clark

**DIRECTIONS FOR USE:** It is a violation of Federal law to use this product in a manner inconsistent with its labeling. **Cap Threading Instructions:** Remove entire cap from container. Remove liner. Locate the first wipe in the center of cap. Place cap firmly back onto container. Pull wipe up at an angle to remove. **On Animals:** To protect animals from Horn Flies, House Flies, Mosquitoes, Fleas, Ticks, and Gnats, apply a light coating sufficient to wet the tips of the hair. To control Stable Flies, Horse Flies, and Deer Flies, rub the wipe sufficiently to wet the hair, but not to soak the hide. Recommended for use on face and around eyes and ears. Repeat as necessary to give continued protection. To control blood-sucking lice: Apply the wipe lightly to infested areas. Repeat every two or three weeks as required. Wash hands thoroughly after application. **PRECAUTIONARY STATEMENTS-HAZARDS TO HUMANS AND DOMESTIC ANIMALS. CAUTION: HARMFUL IF SWALLOWED. AVOID CONTAMINATION OF FEED AND FOODSTUFFS. FOODS SHOULD BE REMOVED OR COVERED DURING TREATMENT. DO NOT USE ON OLD, SICK OR DEBILITATED ANIMALS. DO NOT APPLY TO ANIMALS' GENITALIA OR GET IN EYES.** Statement of practical treatment: If on skin: wash with soap and water. If inhaled: Remove victim to fresh air. Apply artificial respiration if indicated. If in eyes: Flush with plenty of water. Get medical attention if irritation persists. If swallowed: Do not induce vomiting. Call a physician or Poison Control Center. Environmental hazards: This product is toxic to fish. Keep out of lakes, streams or ponds. Do not contaminate water by disposal of wastes. **STORAGE AND DISPOSAL:** Do not contaminate water, food or feed by storage or disposal. Storage: Store in a cool dry place away from heat or open flame. Disposal: Do not reuse container. Wrap wipe and pouch or container in newspaper and place in trash. Consult Federal, State or Local disposal authorities for approved alternative procedure.

**KIMBERLY-CLARK** Kimberly-Clark Corporation  
**ANIMAL** Animal Care Products Group  
**CARE** 1400 Holcomb Bridge Road  
**PRODUCTS** Roswell, GA 30076 (800) 310-7111  
 Reorder Number 15854.00  
 EPA REG. NO. 7402-4  
 EPA EST. NO. 11623 GA-1

Made in the USA. TM Trademark of Kimberly-Clark Corporation, Kannell, GA 30076  
 © 1994 KCC. All Rights Reserved.



**ACCEPTED**  
**15 MAR 1995**  
 Under the provisions of the  
 Federal Insecticide, Fungicide,  
 and Rodenticide Act, as amended,  
 registration of this product is  
 suspended until the date of the  
 EPA's decision on the  
 registration of this product.

9402-4

**BEST COPY AVAILABLE**

COLOUR  
PROOF

A SEPARATED COLOUR REPRESENTATION  
SHOWING ONLY COLOUR AND VARNISH LOCATIONS  
NOT INTENDED AS A MATCH FOR SPECIFIC COLOURS  
CORNER RADIUS, DIE LINES, MAY VARY SLIGHTLY

Proof # 1

Client: Kimberly-Clark

C.P.# 212792 (213233) Del. # US 011666 PA - F1

Size: 85 44-92

Product: Adhesive 44/16" x 84/16"

Colours: Blue 286 Green 347 Orange 150 Not Print

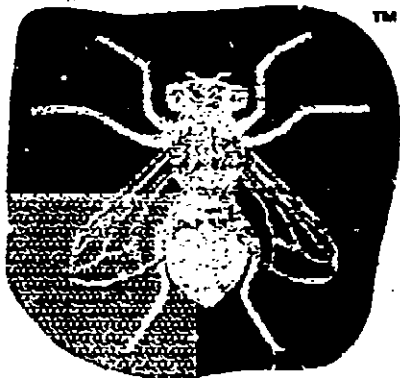
Overall Varnish

Proof for colour separation / Film for type clarity

KIMBERLY-CLARK™

# FLY

REPELLENT WIPES™



Recommended for use on all  
horses, ponies, and stable animals

Keep out of the reach of children.

**CAUTION** See back panel for additional precautions  
Net contents: 2.24 oz. (63.5 grams) 12 wipes 6" x 8"

ACTIVE INGREDIENTS

Pyrethrin	0.08%
Fipronil Sulfate, Inertical®	0.60%
INERT INGREDIENTS	99.32%
Total	100.00%

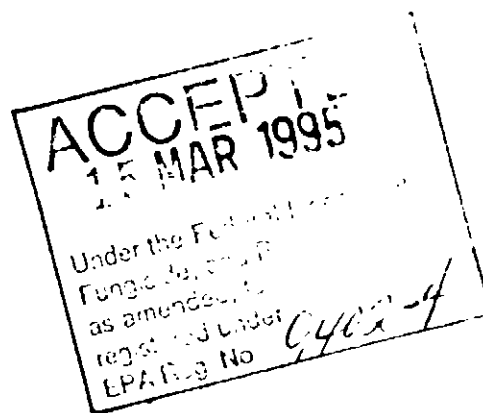
\*Equivalent to max. 0.63% (butyric acid) (1-propylpiperonyl ether) and 0.160% related compounds. Contains potassium citrate.

 Kimberly-Clark

OPEN  
PEEL BACK



CLOSE  
REAPPLY



BEST COPY AVAILABLE

20  
3

**STORAGE AND DISPOSAL:** Do not contaminate water, food or feed by storage or disposal. **Storage:** Store in a cool, dry place away from heat or open flame. **Disposal:** Do not reuse container. Wrap wipe and pouch or container in news paper and place in trash. Consult Federal, State or Local disposal authorities for approved alternative procedure.

KIMBERLY CLARK Kimberly Clark Corporation  
ANIMAL CARE Animal Care Products Group  
1400 Holcomb Bridge Road  
Roswell, GA 30076  
PRODUCTS (800) 310-7111

Reorder Number 15853 00  
EPA REG. NO. 9402-4  
EPA EST. NO. 050757-AW1-001

Made in the U.S.A.  
© 1992 Kimberly-Clark Corporation. All Rights Reserved.  
050757-AW1-001



**DIRECTIONS FOR USE:** It is a violation of Federal law to use this product in a manner inconsistent with its labeling. **Dispensing:** Lift tab on label pulling up firmly until center hole is fully exposed. Pull out wipes as needed. Reseal pack by pressing down label starting at closed end. Store label side down. **On Animals:** To protect animals from Horn Flies, House Flies, Mosquitoes, Fleas, Ticks, and Gnats, apply a light coating sufficient to wet the tips of the hair. To control Stable Flies, Horse Flies, and Deer Flies, rub the wipe sufficiently to wet the hair, but not to soak the hide. Recommended for use on face and around eyes and ears. Repeat as necessary to give continued protection. **To control blood-sucking Lice:** Apply the wipe lightly to infested areas. Repeat every two or three weeks as required. Wash hands thoroughly after application.

**PRECAUTIONARY STATEMENTS—HAZARDS TO HUMANS AND DOMESTIC ANIMALS. CAUTION: HARMFUL IF SWALLOWED. AVOID CONTAMINATION OF FEED AND FOODSTUFFS. FOODS SHOULD BE REMOVED OR COVERED DURING TREATMENT. DO NOT USE ON, OLD, SICK OR DEBILITATED ANIMALS. DO NOT APPLY TO ANIMALS' GENITALIA OR GET IN EYES.** **Statement of practical treatment:** If on skin: wash with soap and water. If inhaled: Remove victim to fresh air. Apply artificial respiration if indicated. If in eyes: Flush with plenty of water. Get medical attention if irritation persists. **If swallowed:** Do not induce vomiting. Call a physician or Poison Control Center. **Environmental hazards:** This product is toxic to fish. Keep out of lakes, streams or ponds. Do not contaminate water by disposal of wastes.



W  
9  
W