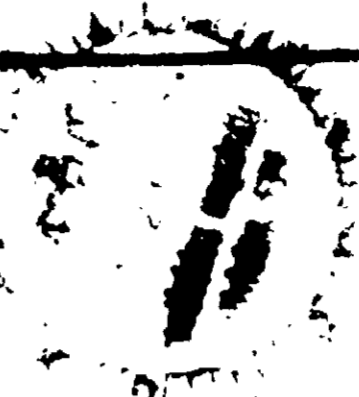


Diazinon AG 500



Active Ingredients	84%
Inert Ingredients	16%
Total	100%

Diazinon AG 500 contains 1.1% Diazinon per gallon. This product is a concentrated emulsion. It is intended for use as a contact insecticide against a wide range of insects and mites on ornamental plants, shrubs, trees, and lawns. It is also effective against ticks and fleas on dogs and cats. It is not intended for use on food crops or in areas where it may come in contact with humans or animals. Use according to label directions. Do not use prior to sunrise or store near heat or open flame.

Warning:

Keep out of reach of children.

May be fatal if swallowed. May be absorbed through skin. Do not get in eyes, nose, mouth. Do not get on face, hair, or clothing. Wash thoroughly after handling. Avoid contact with skin. Do not use on humans or animals. Do not spray glass or plastic until completely dried.

Keep out of reach of children. Do not use in areas where children or pets or livestock are permitted to go on to sprayed glass or plastic until completely dried.

Fish and Wildlife Caution: This product is toxic to fish and wildlife. Do not use in areas where they are likely to feed on treated areas. Do not apply when weather conditions favor drift to areas where they are likely to occur. Do not contaminate water by cleaning of equipment or disposal of waste. Apply this product as specified on this label.

This product is highly toxic to bees. Avoid direct treatment of residues on honey. Protective information may be obtained from your Cooperative Agricultural Extension Service.

Do not reuse empty container. Destroy by cutting up or crushing and burying in waste place.

<p>USE DESIGNATED AMOUNT OF AG 500 IN THE FOLLOWING GALLONS WATER PER ACRE UNLESS OTHERWISE NOTED:</p> <p>Vegetable and Field Crops: 2.0 Deciduous Fruit and NUT Crops: 4.0 On Young Fruit Plantings: 1.0 Orchard Crops: 1.0 Where Reson needed for AIR APPLICATION: 5.0</p>
--

Complete directions for use attached

CUSTOM CHEMICIDES INC.

BERKELEY, CALIFORNIA 94710

Net contents one gallon

Diazinon[®] AG 500

Complete
directions
for use



CUSTOM CHEMICIDES INC

BERKELEY, CALIFORNIA 94710

EPA Reg. No. 9319-14

28 JAN 1974
 9319-14
 SUBJECT

Contents		1
<hr/>		
General Information	3	
Fruit and Nut Crops	4	
Almonds	4	
Apricots	4	
Blueberries	4	
Caneberries	5	
Cherries	6	
Citrus Fruits	7	
Cranberries	7	
Figs	8	
Filberts	8	
Grapes	8	
Nectarines	9	
Olives	9	
Peaches	9	
Pecans	10	
Pineapple	10	
Plums	10	
Prunes	10	
Strawberries	11	
Walnuts	11	
Vegetable Foliar Insects		
Beans	12	
Beets	16	
Broccoli	12	
Brussels Sprouts	13	
Cabbage	12	
Cauliflower	12	
Carrots	13	
Celery	13	
Collards	13	
Cucumbers	14	
Endive	14	
Kale	13	
Lettuce	14	
Lima Beans	12	
Melons	14	
Mushroom Houses	14	
Onions	15	
Parsnips	16	
Peas	15	
Peppers	15	
Potatoes	15	
Radishes	16	
Spinach	16	
Squash	14	
Sweet Corn	16	
Swiss Chard	13	
Tomatoes	16	
Turnips	16	
Turnip Tops	13	
Watercress	17	
Vegetable Soil Insects		
Cutworms	18	
Garden Symphylans	18	

Mole Crickets	19	Range, Pasture and Grassland Insects	30
Onion Maggots	19	Barrier Strips	30
Root Maggots	19	Bermudagrass	30
Southern Potato Wireworms	21	Ditch Banks	30
Wireworms	20	Grass Forage	30
		Noncrop Areas	30
Field and Forage Insects		Pasture	30
Alfalfa	22	Rangeland	30
Clover	23	Roadsides	30
Corn	23		
Cotton	26	Ornamental Insect Control	31
Cowpeas	26		
Hops	26	Lawn Insect Control	33
Lespedeza	26		
Peanuts	27	Forest Insects	35
Sorghum	27	Pine	35
Soybeans	28		
Sugar Beets	28		
Sugarcane	28		
Tobacco	29		

Diazinon AG500 is an emulsifiable solution which when diluted with water according to the directions below, is intended for the control of insect pests of agricultural crops. Do not use in barns or dwellings. Do not use on livestock.

In the directions for use given below, unless otherwise noted, Diazinon AG500 should be mixed with sufficient water to assure thorough coverage. Best control is obtained when application is made at first sign of insects. Applications should be repeated as necessary to maintain control.

Almonds

Mites, Twig Borers: Apply 1 - 1½ pts. per 100 gals. of water.

Parlatoria Scales, San Jose Scales: Mix 1 - 1½ pts. Diazinon plus 2 - 3 gals. dormant oil per 100 gals. of water and apply as a dormant spray.

Almond hulls may be used for feed for livestock.

Apricots

Aphids, Brown Mites (Clover Mites), Two-spotted Spider Mites, Olive Scale Crawlers, San Jose Scale Crawlers: Mix 1 pt. per 100 gals. of water. Apply when aphids, mites, and scale crawlers first appear.

Olive Scale Crawlers: Mix ½ pt. of Diazinon AG500 plus 1½ gals. light medium horticultural oil per 100 gals. of water. Apply when scale crawlers are present.

Apricot Mealybugs: Mix 1 pt. per 100 gals. of water. Apply as a cover spray from petal fall to June.

Do not apply within 10 days of harvest.

Blueberries

Cranberry Fruitworms, Cherry Fruitworms, Blueberry Maggots, Aphids, Thrips, Two-spotted Mites: Mix 1 pt. per 100 gals. of water. Apply up to 200 gals. of spray

per acre, or apply 2 pts. per acre in sufficient water for thorough coverage. Do not apply within 7 days of harvest.

Caneberries

i.e. **Blackberries, Boysenberries, Dewberries, Loganberries, Raspberries**

Leafhoppers, Thrips, Aphids, Two-spotted Mites, Raspberry Sawflies: Mix 1 pt. per 100 gals. of water and apply up to 200 gals. of spray per acre, or apply 2 pts. per acre in sufficient water for thorough coverage.

Raspberry Fruitworms: Apply at the above rates when blossom buds separate and repeat application immediately before blossoms open.

Dryberry Mites: Mix 2 pts. per 100 gals. water. Apply as a dormant spray in early spring, when canes are still on the ground and buds are closed. Make a second application when the buds are well developed, but still closed.

Do not apply within 7 days of harvest.

Raspberry Crown Borers (Raspberry Root Borers): Mix 2 qts. per 100 to 200 gals. of water and apply as a drench to the crown area and to the lower canes. Apply either in the spring before berries begin to form, or in the fall after harvest.

Cherries

Eye-spotted Bud Moths, Fruit-tree Leaf Rollers: Mix 1 pt. per 100 gals. of water. Apply in cover sprays as necessary, beginning with petal fall.

Cherry Fruit Flies: Mix $\frac{1}{2}$ - 1 pt. per 100 gals. of water. Make 3 or 4 applications, beginning when adult cherry fruit flies begin to emerge and repeat at 10-day intervals.

Leafhoppers: Apply 1 pt. per 100 gals. of water in 3-5 applications beginning at petal fall and continuing through the growing season, or apply as infestations develop.

Black Cherry Aphids: Mix 1 pt. per 100 gals. of water. Apply as a cover spray when aphids appear and repeat after 10 days.

San Jose Scale Crawlers: Mix 1 pt. per 100 gals. of water. Apply during the pre-pink stage or when crawlers first appear.

Do not apply within 10 days of harvest.

Cherry Rust Mites: Mix $\frac{1}{2}$ - 1 pt. per 100 gals. of water. Apply as a supplemental spray after harvest.

Citrus Fruits

i.e. **Grapefruit, Lemons, Limes, Oranges, Tangelos, Tangerines, Citrus, Citron, Kumquats, and hybrids of these:**

Citrus Aphids, Fruit-tree Leaf Rollers, Cottony-cushion Scale Crawlers, and Soft Scale Crawlers: Apply $\frac{1}{2}$ - 1 pt. per 100 gals. of water (maximum 1,000 gals. per acre) as a thorough cover spray when aphids and crawler stages of scale insects first appear.

Fruit-tree Leaf Rollers: Use $\frac{1}{2}$ - 1 pt. per 100 gals. of spray (maximum 1,000 gals. per acre) when an average of 50 percent of eggs in egg masses have hatched in the spring.

Citrus Thrips: Apply 1 pt. in 100 gals. of water (maximum 1,000 gals. per acre) when thrips first appear.

Citrus Snow Scales: Apply 1 - 2 pts. per 100 gals. of water (maximum 1,000 gals. per acre) as a post-bloom spray and again as a summer spray. For heavy snow scale infestations, use the higher dosage rate. Thorough coverage of tree trunk, limbs, and twigs is essential.

Do not apply during bloom. Do not apply to citrus within 21 days of harvest.

Cranberries

Black-headed Fireworms (*Sparganothis sulfureana*): Apply 2 qts. in 400 gals. of water per acre.

Diazinon[®] AG 500



Active Ingredients:	84%
O,O-diethyl O-(2-sopropyl-6-methyl-4-pyrimidinyl)-phosphorothioate	48%
Xylene	36%
Inert Ingredients:	16%
Total:	100%

Diazinon[®] AG500 contains 4 lbs. Diazinon per gallon.

Note: This is a Federal Government Registration. It is not for use on grapes, peaches, or strawberries. Five days should elapse between the time of application and the time a worker may enter the field to engage in any activity requiring contact with treated foliage. When a mixture of two or more organic phosphate pesticides are applied in combination, the interval should be prolonged by adding to the largest applicable interval an additional 50% of that interval.

CAUTION: INFLAMMABLE MIXTURE Minimum Flash Point 82°F. Do not use, pour, spill or store near heat or open flame.

Warning:

Keep out of reach of children.

May be fatal if swallowed. May be absorbed through skin. Do not breathe spray mist. Do not get in eyes, on skin, or on clothing. Wash thoroughly after handling. Avoid contamination of food. Do not use on humans or permit children to go on to sprayed grass until spray has completely dried.

Keep out of reach of domestic animals. Do not contaminate feed or use on household pets or livestock. Do not permit pets to go on to sprayed grass until spray has completely dried.

Fish and Wildlife Caution

This product is toxic to fish and wildlife. Birds feeding on treated areas may be killed. Keep out of any body of water. Do not apply when weather conditions favor drift from areas treated or where runoff is likely to occur. Do not contaminate water by cleaning of equipment or disposal of waste. Apply this product only as specified on this label.

This product is highly toxic to bees exposed to direct treatment or residues on crops. Protective information may be obtained from your Cooperative Agricultural Extension Service.

Do not reuse empty container. Destroy by perforation or crushing and burying in a safe place.

USE DESIGNATED AMOUNT OF PRODUCT IN THE FOLLOWING GALLONS WATER PER ACRE UNLESS OTHERWISE NOTED:
GROUND APPLICATION—Vegetable and Field Crops—25 to 250 gals. Deciduous Fruit and NUT Crops—40 to 400 gals. Citrus—100 to 1,000 gals. (On Young Fruit Plantings use a minimum of 20 gals. water per acre).
Where Recommended for AIR APPLICATION—Field Crops—5 to 10 gals. Orchard Crops—10 to 20 gals.

Complete directions for use attached

CUSTOM CHEMICIDES INC.

BERKELEY, CALIFORNIA 94710

Net contents one gallon

Cranberry Fruitworms: Apply 3 qts. in 400 gals. of water per acre.

Do not apply within 7 days of harvest.

Figs

Vinegar Flies (*Drosophila* spp.), Dried Fruit Beetles
Apply 1 pt. per 100 gals. of water. Do not apply within 5 days of harvest.

Filberts

Filbert Leaf Rollers, Aphids: Apply 1 - 2 qts. in 250 - 400 gals. of water per acre, as a thorough cover spray.

Grapes

Pacific Spider Mites, Leafhoppers, Grape Berry Moths, Grape Leaf Folders: Mix 1 pt. per 100 gals. of water and apply as a thorough cover spray, or apply 2 pts. per acre in sufficient water for thorough coverage. Do not apply within 18 days of harvest.

Drosophila spp.: Mix 6 fl. oz. per 100 gals. of water and apply as a thorough cover spray, or apply a maximum of 18 fl. oz. per acre in sufficient water for thorough coverage when insects first appear. Make additional applications at weekly intervals as necessary. Do not apply within 7 days of harvest.

continuing through the growing season, or apply as infestations develop.

White Peach Scale (Peaches only): As a post-harvest spray apply 1½ - 2 pts. per 100 gals. of water timed to coincide with peak crawler and immature scale activity. Under conditions of heavy infestations 2 applications may be necessary.

Do not apply to peaches within 20 days, or to nectarines within 10 days, of harvest.

Pecans

Aphids, Mites, Pecan Nut Casebearers, Walnut Caterpillars: Apply 1 - 3 qts. per acre as a foliage spray. Do not apply after husks crack.

Pineapple

Scales: Apply 5 qts. of Diazinon AG500 plus 2 gals. of light or medium horticultural oil in 500 gals. of water per acre to the vegetative slips on the plants following harvest of pineapple.

Mealybugs: Apply 2 qts. per acre. May be applied on day of harvest.

Pineapple forage and refuse may be fed to livestock 7 days following last application.

Plums and Prunes

Brown Mites (Clover Mites), European Red Mites: Apply 1 pt. per 100 gals. of water.

Leaf Curl Plum Aphids, Mealy Plum Aphids, Thistle Aphids: Apply ½ - 1 pt. per 100 gals. of water.

Do not apply within 10 days of harvest.

Strawberries

Aphids, Two-spotted Spider Mites: Apply 1 pt. per 100 gals. of water per acre.

Cyclamen Mites: Apply 1 qt. per 100 gals. of water per acre, directing spray to plant crowns. Plants should be sufficiently agitated to assure thorough coverage of the foliage. Make additional applications, if necessary, after harvest.

Mole Crickets: Broadcast 1 qt. per acre when insects are present. Apply 1 - 2 days before transplanting and mix into the top 1 - 2 inches of soil immediately.

Strawberry Leaf Rollers: Mix ¾ - 1 pt. per 100 gals. of water. Apply 200 gals. of spray per acre when blossoms show color.

Do not apply within 5 days of harvest.

Walnuts

Aphids, Mites: Apply 1 qt. per acre as a foliage spray.

Codling Moths, Scale Crawlers, Walnut Caterpillars: Apply 3 qts. per acre as a foliage spray.

Do not apply after the husks open.

Diazinon AG500 should always be applied as a spray in sufficient water to assure thorough coverage of the foliage.

Beans

Pole Beans, Snap Beans, Lima Beans

Black Bean Aphids, Mexican Bean Beetles, Leaf Miners: Apply 1 - 1 $\frac{1}{2}$ pts. per acre.

Cucumber Beetles: Apply $\frac{3}{4}$ pt. in 100 gals. of water per acre.

Do not apply within 7 days of bean harvest. Bean forage or bean hay may be fed to dairy and beef cattle and sheep. Wait 4 days following treatment if forage is to be cut for hay.

Lima Beans

Dipterous Leaf Miners, Leafhoppers, Mites: Apply 1 pt. per acre. Do not apply within 7 days of harvest. Bean forage or bean hay may be fed to dairy and beef cattle, and sheep. Wait 4 days following treatment if forage is to be cut for hay.

Broccoli, Cabbage, and Cauliflower

Aphids, Diamondback Moths, Imported Cabbageworms: Apply $\frac{1}{2}$ - 1 pt. per acre. Applications at 7 - 10 day intervals will usually be required. Do not apply to broccoli

or cauliflower within 5 days, or to cabbage within 7 days, of harvest.

Brussels Sprouts

Aphids, Diamondback Moths, Imported Cabbageworms: Apply 1 pt. per acre. Generally, applications at 7 - 10 day intervals will be required.

Do not apply to brussels sprouts within 7 days of harvest.

Carrots

Aphids: Apply 1 pt. per acre. Do not apply within 10 days of harvest.

Celery

Aphids, Flea Beetles: Apply 1 pt. in 100 gals. of water per acre. Do not apply within 10 days of harvest. Plants should be market trimmed (tops removed) before being shipped or used. Tops should not be used for feed or food.

Collards, Kale, Swiss Chard, and Turnip Tops

Aphids, Imported Cabbageworms, Diamondback Moths, Harlequin Cabbage Bugs, Apply $\frac{1}{2}$ - 1 pt. per acre. Do not apply to collards, kale, or turnip tops within 10 days, or to Swiss chard within 12 days of harvest.

Cucumbers

Aphids, Serpentine Leaf Miners, Thrips: Apply 1 pt. per acre. Do not apply within 7 days of harvest.

Lettuce and Endive

Aphids, Dipterous Leaf Miners: Apply $\frac{1}{2}$ - 1 pt. per acre. Do not apply within 10 days of harvest.

Melons and Squash

Cantaloupes, Casabas, Crenshaws, Honeydew Melons, Muskmelons, Persian Melons, and hybrids of these; Watermelons and their hybrids; Summer and Winter Squash
Aphids, Leafhoppers, Mites: Apply 1 - $1\frac{1}{2}$ pts. per acre.

Serpentine Leaf Miners, Thrips: Apply $\frac{1}{2}$ - 1 pt. per acre.

Do not apply to melons and winter squash within 3 days, or to summer squash within 7 days, of harvest.

Mushroom Houses

Mushroom Flies (Phorids and Sciari): Mix $\frac{1}{2}$ - 1 gal. in 50 gals. of water (0.5% to 1.0% actual Diazinon) and spray on outside and inside walls and ventilators of mushroom houses, after compost in beds has been pasteurized by heating. Do not spray compost in beds or after spawning.

To treat wooden sides of beds, posts, doors, and door-frames after pasteurizing, mix $\frac{1}{2}$ pt. in 6 gals. of water and apply with a brush.

Do not treat compost.

Onions

Onion Thrips: Apply 1 pt. per acre. Do not apply within 10 days of harvest.

Peas

Aphids, Leaf Miners: Apply $\frac{3}{4}$ - 1 pt. per acre. Peas may be picked immediately. Pea vines and pea vine hay may be fed to dairy and beef cattle and sheep. Wait 4 days following treatment if forage is to be cut for hay.

Peppers

Aphids, Serpentine Leaf Miners: Apply 1 pt. per acre. Do not apply within 5 days of harvest.

Potatoes

Aphids, Flea Beetles, Colorado Potato Beetles, Dipterous Leaf Miners: Apply at the rate of $\frac{1}{2}$ - $\frac{3}{4}$ pt. per acre.

Banded Cucumber Beetles, Leafhoppers, Southern Armyworms: Apply $\frac{3}{4}$ - 1 pt. per acre.

Do not apply within 35 days of harvest.

Radishes, Parsnips, and Turnips

Aphids, Flea Beetles, Dipterous Leaf Miners: Apply $\frac{1}{2}$ - 1 pt. per acre. Do not apply within 10 days of harvest.

Spinach and Beets

Aphids, Dipterous Leaf Miners: Apply $\frac{1}{2}$ - 1 pt. per acre. Do not apply to spinach within 10 days, or to beets within 14 days, of harvest.

Squash (Summer and Winter)

See Melons and Squash on page 14.

Sweet Corn

Corn Earworms: Apply 1 - $1\frac{1}{4}$ qts. per acre when silks first appear. Two or three repeat applications at 2 - 3 day intervals will usually be necessary. Corn may be picked immediately following last application. Corn forage may be fed to dairy and beef cattle and sheep.

Refer also to Corn under Field and Forage Insects on page 23.

Tomatoes

Aphids, Dipterous Leaf Miners: Apply $\frac{1}{2}$ pt. per acre. To control leaf miners, weekly applications are usually required.

Banded Cucumber Beetles, Fall Armyworms, Southern Armyworms: Apply $\frac{3}{4}$ - 1 pt. per acre.

Vinegar Flies (*Drosophila* spp.): Apply $\frac{1}{2}$ - $1\frac{1}{2}$ pts. per acre. Weekly applications are usually required.

Do not apply within 1 day of harvest.

Watercress (Hawaii Only)

Cyclamen Mites: Mix 1 pt. per 100 gals. of water and apply to one acre as a thorough cover spray. Spray should be directed into the crowns and growing tips of plants. If infestation is heavy, make a second application no later than 10 days after the first application. Repeat applications as necessary. Do not apply within 5 days of harvest.

Vegetable Soil Insects

Diazinon AG500 should always be applied as a spray in sufficient water to assure thorough coverage of the soil.

Cutworms (Surface and Subterranean)

<u>Broccoli</u>	Kale	Snap Beans
<u>Brussels Sprouts</u>	Lettuce	Spinach
<u>Cabbage</u>	<u>Lima Beans</u>	Summer Squash
<u>Cantaloupes</u>	Muskmelons	Sweet Corn
<u>Cauliflower</u>	Parsley	Swiss Chard
<u>Celery</u>	Peas	Tomatoes
<u>Collards</u>	Peppers	Watermelons
<u>Cucumbers</u>	Potatoes	Winter Squash
Endive (escarole)		

Broadcast 2 - 4 qts. per acre just prior to planting. Work into the soil immediately. 2 - 3 inches for surface cutworms, 3 - 6 inches for subterranean cutworms.

Garden Symphylans (Centipedes)

<u>Cabbage</u>	Peas	<u>Snap Beans</u>
<u>Carrots</u>	Pole Beans	<u>Tomatoes</u>
<u>Corn</u>	Radishes	<u>Turnips</u>
<u>Lettuce</u>	Red Beets	

Broadcast 10 qts. per acre just prior to planting. Work into soil 4 - 8 inches immediately. This pre-plant treatment will also control other soil insects such as cutworms (surface and subterranean), mole crickets, root maggots, and wireworms.

Vegetable Soil Insects

Mole Crickets

<u>Broccoli</u>	Endive (escarole)	Radishes
<u>Brussels Sprouts</u>	Kale	Tomatoes
<u>Cabbage</u>	Lettuce	Turnips
<u>Cauliflower</u>	Mustard	
<u>Collards</u>	Peppers	

Broadcast 1 qt. per acre when insects are present. Make application to plant beds or fields 1 - 2 days prior to sowing of seed or transplanting and work into soil 1 - 2 inches immediately.

Onion Maggots

Onions
Furrow Application: Apply 1 qt. per acre in sufficient water to drench the seed furrow at planting time.

Broadcast Application: Broadcast 2 - 4 qts. per acre just prior to planting. Work into soil 3 - 4 inches immediately.

Root Maggots

Broccoli, Brussels Sprouts, Cabbage, and Cauliflower:
Broadcast Application: Broadcast 2 - 3 qts. per acre and immediately work into the soil 3 - 4 inches, before seeding, either in the seedbed or in the field, or before transplanting.

Transplant Water (Drench) Application: Mix 1/4 - 1/2 pt.

in 50 gals. of transplant water, when 200 - 300 gals. of water are used per acre. May be applied at the rate of 1/2 - 1 cupful per plant, either by hand or by tractor-mounted sprayer equipped with drop nozzles to direct spray to the base of the plant. Transplant water treatments may result in stand reduction due to plant stress at time of transplanting.

Radishes: Mix 1 qt. in 50 gals. of water. Apply 80 - 100 gals. per acre (1 - 1 1/3 gals. per 1,000 linear feet of row) in the seed furrow at planting time.

Wireworms

Broccoli	Endive (escarole)	Snap Beans
Brussels Sprouts	Kale	Spinach
Cabbage	Lettuce	Summer Squash
Cantaloupes	Lima Beans	Sweet Corn
Carrots	Muskmelons	Sweet Potatoes
Cauliflower	Onions	Swiss Chard
Celery	Parsley	Tomatoes
Collards	Peas	Watermelons
Cucumbers	Peppers	Winter Squash

Broadcast 3 - 4 qts. per acre prior to planting, and work into soil 4 - 8 inches immediately.

Potatoes

- Wireworms: Broadcast 3 - 6 qts. per acre prior to planting. Immediately disk or harrow into soil 4 - 8 inches.

Southern Potato Wireworms

- Potatoes (*Southeastern U.S.*): For potatoes on mineral soils, broadcast 2 - 4 qts. per acre prior to planting, and immediately work into soil 3 - 6 inches depending on location of wireworms.

Field and Forage Insects

Diazinon AG500 should always be applied as a spray in sufficient water to assure thorough coverage of the foliage or soil, depending on the type of application

Alfalfa and Clover

Spotted Alfalfa Aphids, Yellow Clover Aphids, Pea Aphids, Leafhoppers, Plant Bug Nymphs, Mites: Apply $\frac{3}{4}$ - 1 pt. per acre.

Grasshoppers: Apply 1 pt. per acre.

Cutworms (Surface and Subterranean): Broadcast 2 - 4 qts. per acre just prior to planting. Work into the soil immediately, 2 - 3 inches for surface cutworms, 3 - 6 inches for subterranean cutworms.

Following the above applications, dairy and beef cattle and sheep (1) may be grazed immediately following application, (2) may be fed green alfalfa or clover immediately following cutting, and (3) may be fed hay provided alfalfa or clover is not cut for hay for 7 days following treatment.

Alfalfa Weevil Larvae: For control in the spring, apply 2 - 3 pts. per acre when feeding damage to growing tips becomes evident. Repeat application, if necessary. If damage is already extensive, cut the hay and make application to the stubble. Do not graze dairy and beef

Field and Forage Insects

animals or sheep for 2 days. Do not cut for hay for 7 days following treatment

Do not spray livestock directly with either air or ground equipment. Do not treat during bloom to avoid injury to pollinating insects

Clover

Striped Ground Crickets: Broadcast 1 - 2 pts. per acre following seeding in the fall but prior to clover emergence.

Corn

Corn Rootworm Larvae

Band Application at Planting Time: Apply 1 - 2 qts. per acre in a minimum of 5 gals. of water. Make application in the seed furrow, or apply 2 $\frac{1}{2}$ - 5 oz. per 1,000 linear feet of corn row in a 4 - 7 inch band directly behind the planter shoe. For band treatment, refer to the row spacing chart for amounts recommended per acre.

Post-emergence Basal Treatment: Apply 1 $\frac{1}{4}$ - 2 $\frac{1}{2}$ oz. per 1,000 linear feet of corn row in sufficient water to thoroughly wet base of corn plant and a narrow band of soil next to the plant. Refer to the row spacing chart for amounts recommended per acre. Cover treated band with 2 - 3 inches of soil using a disk hiller or cultivator immediately after spraying. Application should

be made at the first sign of corn rootworm larvae, but not later than June 24 in the Middle Corn Belt, or July 1 in the Northern Corn Belt.

Suggested Rates According to Row Spacing for
Corn Rootworm Larvae Control

Row spacing	Linear feet of corn row/acre	Amount of Diazinon AG500 per acre	
		Planting time application	Post-emergence basal treatment
48"	10,890	28 - 56 oz.	14 - 28 oz.
42"	12,455	31 - 62 oz.	15.5 - 31 oz.
40"	13,068	32 - 64 oz.	16 - 32 oz.
		(1 - 2 qts.)	($\frac{1}{2}$ - 1 qt.)
38"	13,939	35 - 70 oz.	17.5 - 35 oz.
36"	14,250	36 - 72 oz.	18 - 36 oz.
30"	17,424	44 - 88 oz.	22 - 44 oz.
24"	21,780	55 - 110 oz.	27.5 - 55 oz.
20"	26,136	64 - 128 oz.	32 - 64 oz.
		(2 - 4 qts.)	(1 - 2 qts.)
15"	34,848	88 - 176 oz.	44 - 88 oz.

Note: For row spacings not listed, calculate the appropriate dosage rates based on the 40-inch row figures

Seed Corn Maggots: Broadcast 2 - 4 qts. per acre just prior to planting. Work into soil 2 inches immediately.

Cutworms (Surface and Subterranean): Broadcast 2 - 4

qts. per acre. For surface cutworms, apply just prior to planting or when larvae first appear and work into soil 1 - 2 inches immediately. Do not apply later than layby. For subterranean cutworms, apply just prior to planting and work into soil 3 - 6 inches immediately.

Wireworms: Apply 3 - 4 qts. per acre prior to planting and work into the soil 4 - 8 inches immediately.

Corn Rootworm Adults: Apply $\frac{1}{2}$ - 1 pt. per acre.

Corn Leaf Aphids: Apply 1 - 2 pts. per acre in sufficient water to provide complete coverage of the upper portions of plants. Repeat application as necessary.

Mites: Apply 1 pt. per acre in sufficient water to achieve thorough coverage when infestation first appears and repeat applications as necessary.

Flea Beetles: Apply 1 pt. per acre in sufficient water to assure thorough coverage when insects first appear, and repeat application as necessary.

Grasshoppers: Apply 1 pt. per acre.

Sap Beetles: Apply 2 - 2 $\frac{1}{2}$ pts. per acre. Add 1 - 2 gals. of soluble mineral oil per acre to the spray mixture. Consult local agricultural authorities for proper timing of sprays.

Corn may be picked immediately following last application. Corn forage may be fed to dairy and beef cattle and sheep.

Cotton

Spider Mites, Aphids, Leafhoppers Lygus bugs, Cotton Leafworms, Cotton Leaf Perforators: Apply 1 - 2 pts. in 5 - 25 gals. of water per acre. Repeat as infestation warrants.

Do not apply within 14 days of harvest. Do not graze treated cotton plants, or feed gin waste to livestock.

Cowpeas

Cutworms (Surface and Subterranean): Broadcast 2 - 4 qts. per acre, just prior to planting. Work into the soil immediately, 2 - 3 inches for surface cutworms, 3 - 6 inches for subterranean cutworms.

Hops

Aphids, Mites: Apply 1 qt. per acre. Do not apply within 14 days of harvest.

Lespedeza

Cutworms (Surface and Subterranean): Broadcast 2 - 4 qts. per acre just prior to planting. Work into the soil immediately, 2 - 3 inches for surface cutworms, 3 - 6 inches for subterranean cutworms.

Peanuts

Cutworms: Apply 2 qts. per acre in a 12-inch band over the row. Use sufficient water to achieve thorough coverage. Begin application when small larvae appear. Two or three additional applications at three-week intervals may be necessary. Do not apply within 21 days of peanut harvest.

Livestock (1) may be fed peanut hulls, (2) may be fed peanut forage 7 days following treatment and (3) may be fed peanut hay 21 days following treatment.

Sorghum

Sorghum Midge: Apply $\frac{1}{2}$ - 1 pt. per acre when 90% of heads have emerged from the boot. Repeat application within 4 days.

Greenbug (*Texas and Oklahoma only*): Apply $\frac{1}{2}$ - 1 pt. per acre in a minimum of 10 gals. of water for ground applications or apply in a minimum of 2 gals. of water for aerial applications. Make applications when infestations first appear and repeat as necessary.

Mites: Apply 1 pt. per acre in sufficient water to assure thorough coverage when infestation first appears and repeat applications as necessary.

Crop may be fed to livestock immediately following treatment. Do not apply within 7 days of harvesting for grain.

Cutworms (Surface and Subterranean): Broadcast 2 - 4 qts. per acre just prior to planting. Work into the soil immediately, 2 - 3 inches for surface cutworms, 3 - 6 inches for subterranean cutworms.

Soybeans

Cutworms (Surface and Subterranean): Broadcast 2 - 4 qts. per acre just prior to planting. Work into the soil immediately, 2 - 3 inches for surface cutworms, 3 - 6 inches for subterranean cutworms.

Sugar Beets Beet Leafhoppers.

Dipterous Leaf Miners, Aphids. Apply $\frac{3}{4}$ - 1 pt. per acre.

Grasshoppers: Apply 1 pt. per acre.

Wireworms: Broadcast 3 - 4 qts. per acre just prior to planting, and work into soil 4 - 8 inches immediately.

Note: Tops may be fed to beef and dairy animals.

Sugarcane

Aphids: Apply $\frac{1}{2}$ - 1 pt. Diazinon AG500 per acre. Allow 1 day between last application and harvest. Bagasse and forage may be fed to livestock.

Wireworms: Apply, on a 12-inch band centered over the furrow, 1 gal. per acre in sufficient water to obtain thorough coverage. Make application directly to seed pieces in open furrow at covering time.

Tobacco

Aphids, Flea Beetles: Apply $\frac{1}{2}$ - $\frac{3}{4}$ pt. per acre. Do not apply within 3 days of harvest.

Cutworms: Broadcast 2 - 3 qts. per acre before transplanting and work into the soil 2 - 4 inches immediately.

Green June Beetle Larvae: Mix $\frac{1}{4}$ pt. in 50 gals. of water and apply as a drench (100 gals. per 100 sq. yds.) to uprooted areas of plant beds with sprinkling can.

Mole Crickets: Broadcast 1 qt. per acre when insects are present. Make application to beds or fields 1 - 2 days prior to sowing of seed or transplanting, and work into soil 1 - 2 inches immediately.

Seed-corn Maggots: Broadcast 3 pts. per acre, 3 - 4 weeks before transplanting. Work into soil 2 inches immediately.

Wireworms: Broadcast 2 - 3 qts. per acre, 3 - 4 weeks before transplanting. Work into soil 6 - 9 inches immediately.

Grasshoppers: Apply 1 pt. per acre. Do not apply within 14 days of harvest.

Bermudagrass and Forage Grasses (other than Range and Pasture Grasses)

Thrips, Whiteflies, Grasshoppers: Apply 1 pt. per acre in a minimum of 5 gals. of water.

Dairy and beef cattle, and sheep (1) may be grazed immediately following application, (2) may be fed green forage immediately following cutting, and (3) forage grasses may be cut for hay 7 days following treatment.

Rangeland, Pasture, Ditch Banks, Roadsides, Wasteland, Noncrop Areas, and Barrier Strips.

Grasshoppers: Apply $\frac{3}{4}$ - 1 pt. per acre in a minimum of 5 gals. of water or a minimum of 1 gal. of oil.

Dairy and beef cattle, and sheep (1) may be grazed immediately following application, (2) may be fed green forage immediately following cutting, and (3) rangeland and pasture grasses should not be cut for hay for 21 days if the spray is a water solution, or for 30 days if the spray is an oil solution. Do not repeat application for 30 days.

Note: Do not spray livestock directly with either air or ground equipment.

To control certain insects on ornamentals: Arborvitae, Azalea, Birch, Boxwood, Camellia, Carnation, Chrysanthemum, Douglas Fir, Elm, Gladioli, Hawthorn, Holly, Juniper, Lilac, Locust, Maple, Oak, Pine, Plum, Poplar, Rhododendron, Rose, Spruce, and Willow, apply the recommended rates indicated below.

Insects	Amount Diazinon AG 500 to Use	
	per 3 gals. water	per 100 gals. water
Aphids, Bagworms, Carnation Bud Mites, Carnation Shoot Mites, Clover Mites, Cyclamen Mites, Dipterous Leaf Miners, European Pine Shoot Moths, European Red Mites, Flea Beetles, Holly Bud Moths, Leafhoppers, Obscure Root Weevils, Omnivorous Leaf Tiers, Privet Mites, Scale Crawlers (Cottony-cushion, Lemon, Pine Needle, San Jose, Soft Scale), Thrips, Two-spotted Mites, Webworms, Whiteflies	$\frac{1}{2}$ fl. oz.*	1 pt.*
Apple-and-Thorn Skeletonizers, Cotoneaster Webworms, Fall Webworms, Hemlock Chermes, Oak Loopers, Oblique-banded Leaf Rollers, Pear Slugs, Tent Caterpillars	1 $\frac{1}{2}$ fl. oz.	3 pts.
*1 fl. oz. = 2 tablespoons	16 fl. oz.	1 pint

Do not use on certain Ferns, Poinsettia, Hibiscus, Papaya, Pilea, and Gardenia, since injury to the plants may occur.

Mimosa Webworms: Mix $\frac{1}{2}$ fl. oz. in 3 gals. of water (or 1 pt. in 100 gals. of water) and apply as a thorough foliar spray when adults first appear. Make a second and third application at 4 - 5 week intervals.

To control insects listed below, apply recommended rates. For insects Ants, Brown Dog Ticks, Clover Mites, Crickets, Earwigs, Fleas, Millipedes, Sowbugs, and Collembola (Springtails), which are commonly found near the house and may enter the house, spray a 5-ft. band of soil around the house, as well as the house foundation wall to a height of 2 - 3 ft. Repeat application if necessary.

Insects	Rate/1,000 sq. ft. Diazinon Water AG 500	Remarks
Lawn Chinch Bugs	2-3 fl. oz. or 25 gals. 3-6 fl. oz.	Use higher rate for longer residual control and in lawns of dense growth, such as St. Augustine lawns.
Ants, Army- worms, Clover Mites, Collem- bola (Spring- tails), Crickets, Cutworms, Dig- ger Wasps, Ear- wigs, Frit Flies, Lawn Billbugs Sod Webworms (Lawn Moths) Sowbugs	4 fl. oz. 3 gals.	Spot spray ant hills and wasp ground nest openings. For lawn billbugs, irrigate the lawn thoroughly immediately after treatment. For frit flies, mow grass and water well before treatment but delay application until grass is dry. Do not water again until necessary.

Insects	Rate/1,000 sq. ft.		Remarks
	Diazinon AG 500	Water	
Brown Dog Ticks, Bermuda Mites, Chiggers, Fleas, Leafhoppers, Ticks	1 $\frac{1}{4}$ fl. oz.	3 gals.	Do not apply to animals. For brown dog ticks, spray grass and under shrubby, particularly near house.
Millipedes	8 fl. oz.	3 gals.	
Rhodes-Grass Scales	5 fl. oz.	25 gals.	Apply when crawlers first emerge.

Boxelder Bugs: Spray bugs outside the home with 1 $\frac{1}{4}$ - 2 $\frac{1}{2}$ fl. oz. (2 $\frac{1}{2}$ - 5 tablespoons) in 1 gal. water. At the same time, thoroughly spray around foundation, windows, doors, tree trunks, and into cracks and other places where the insects hide.

Forest Insects

Pine (Seed Orchards, Plantations, Forests)

Arkansas Sawfly (Loblolly Sawfly): Apply $\frac{1}{2}$ pt. per acre over the tree canopy in sufficient water to assure thorough coverage. Application should be made at or near the completion of egg hatch. Aerial applications should be made with a minimum of 2 gals. of spray per acre, in swaths not more than 90 ft. wide. Repeat application as needed.