

A LIQUID VEGETATION KILLER TO BE APPLIED UNDILUTED AS A SPRAY ON NON-CROPLAND AREAS. AN EFFECTIVE GENERAL HERBICIDE FOR CONTROL OF MANY ANNUAL AND PERENNIAL WEEDS AND IS PARTICULARLY USEFUL FOR THE CONTROL OF PERENNIAL GRASSES. PRODUCES RAPID TOP KILL OF ALL SUCCULENT VEGETATION. TRANSLOCATION AND ROOT ABSORPTION OF COMPONENT HERBICIDES PRODUCE EXTENSIVE ROOT KILL AND RESIDUAL CONTROL. THE DEGREE OF CONTROL AND DURATION OF EFFECT WILL VARY WITH THE AMOUNT OF PRODUCT APPLIED, SOIL TYPE, RAINFALL AND OTHER CONDITIONS.

**PRODUCT USES**

USE WHERE NON-CROPLAND WEED CONTROL IS DESIRED AND IN AREAS WHERE VEGETATION IS NOT WANTED.

**EXAMPLES**

**INDUSTRIAL PLANTS** - Fences, warehouses, lumberyards, pipe lines, mills and tank farm areas.

**HIGHWAYS** - Roadside markers, road shoulders, signposts, bridges and general highway maintenance.

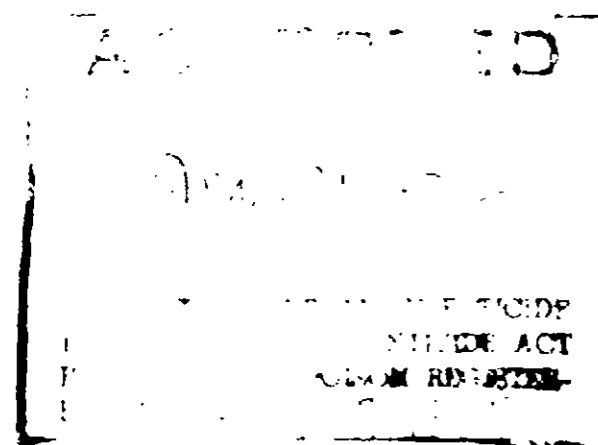
**RAILROADS** - Rights of way, yards and trisles.

**UTILITIES** - Telephone, telegraph, and electric power lines, power lines, power sub-stations, and pipelines.

**OTHER** - Airfields, runways and taxi-strips, landing lights and markers, outdoor theatres, tennis courts, playgrounds, driveways and parking areas.

NET CONTENTS \_\_\_\_\_ GALLONS.

LAB CONTROL NO. \_\_\_\_\_



**VOID**

A LIQUID, NON-SELECTIVE, PERSISTENT VEGETATION KILLER



*[Faint, illegible text, likely bleed-through from the reverse side of the page]*

**WARNING KEEP OUT OF REACH OF CHILDREN**

*[Faint, illegible text, likely bleed-through from the reverse side of the page]*

Mfg By ROSE CHEMICAL PRODUCTS, Inc. 545 St. James Ave., Columbus, Ohio

**DIRECTIONS**

**HOW TO APPLY** - Do not dilute, use as supplied. Spray product uniformly at the rate given. Before treating, calibrate equipment for proper delivery.

**AMOUNT TO USE**

**ANNUAL WEEDS AND GRASSES** (Such as crabgrass, foxtail, barnyardgrass, lambsquarter and pigweed) - Apply 1 to 2 gallons per 1000 square feet.

**PERENNIAL WEEDS AND GRASSES** (Such as smooth brome, quackgrass, Canada bluegrass, broomsedge, aster, dandelion, goldenrod, plantain, wild carrot and purpletop) - Apply 2 to 4 gallons per 1000 square feet.

**OTHER HARD-TO-KILL PERENNIAL WEEDS AND GRASSES** (Such as Johnsongrass, saltgrass, Bermudagrass, horsetail, bouncing bet and bracken fern) - Apply 3 to 5 gallons per 1000 square feet.

**HOW TO APPLY:** Apply at any time of the year except when the ground is frozen. Best results are obtained after predominant species have emerged and developed to a point where they are objectionable, usually in late spring or early summer. By preventing weed growth in any year, fire hazards from dead and dry vegetation are avoided. Follow directions carefully.

**PRECAUTION:** Do not apply on or near turf or valuable trees or other desirable plants, or in areas where the roots may extend. This product should only be used where unproductive soil is not objectionable. Vapors from this product may injure susceptible plants in the immediate vicinity. Do not store near fertilizers, seeds, insecticides or grades. Avoid spray drift to susceptible plants, as this product may injure cotton, beans, peas, grapes, ornamentals, etc. Coarse sprays are less likely to drift. Thoroughly clean spray equipment with suitable cleaner after use.

Environmental conditions may affect the use of the product. Consult State Agricultural Extension or Experiment Station for specific recommendations.

A LIQUID VEGETATION KILLER TO BE APPLIED UNDILUTED AS A SPRAY ON NON-CROPLAND AREAS. AN EFFECTIVE GENERAL HERBICIDE FOR CONTROL OF MANY ANNUAL AND PERENNIAL WEEDS, AND IS PARTICULARLY USEFUL FOR THE CONTROL OF PERENNIAL GRASSES. PRODUCES RAPID TOP KILL OF ALL SUCCULENT VEGETATION. TRANSLOCATION AND ROOT ABSORPTION OF COMPONENT HERBICIDES PRODUCE EXTENSIVE ROOT KILL AND RESIDUAL CONTROL. THE DEGREE OF CONTROL AND DURATION OF EFFECT WILL VARY WITH THE AMOUNT OF PRODUCT APPLIED, SOIL TYPE, RAINFALL AND OTHER CONDITIONS.

**PRODUCT USES:**

USE WHERE NON-CROPLAND WEED CONTROL IS DESIRED, AND IN AREAS WHERE VEGETATION IS NOT WANTED.

**EXAMPLES:**

**INDUSTRIAL PLANTS** - Fences, warehouses, lumberyards, pipelines, mills and tank farm areas.

**HIGHWAYS** - Roadside markers, road shoulders, signposts, bridges, and general highway maintenance.

**RAILROADS** - Rights of way, yards and trestles.

**UTILITIES** - Telephone, telegraph, and electric power lines, power lines, power sub-stations, and pipelines.

**OTHER** - Airfields, runways and taxi-strips, landing lights and markers, outdoor theatres, tennis courts, playgrounds, driveways and parking areas.

NET CONTENTS \_\_\_\_\_ GALLON(S)

LAB CONTROL NO. \_\_\_\_\_

ACCEPTED  
 Mar 21, 1972  
 HERBICIDE  
 PESTICIDE ACT  
 POISON REGISTER  
 9312-15

**VOID**

A LIQUID, NON-SELECTIVE, PERSISTENT VEGETATION KILLER



Active Ingredients	
Petroleum distillate	97.30%
2,4-Dichlorophenoxyacetic acid, isooctyl ester*	1.00%
Bromacil (5-bromo-3-sec-butyl-6-methyluracil)	0.61%
Pentachlorophenol	0.81%
Other chlorophenols	0.09%
Inert Ingredients	0.05%
	100.00%

\* Equivalent to 0.70% 2,4-Dichlorophenoxyacetic acid : 4 D:  
 epa reg  
 EPA Reg No 9312-15

**WARNING KEEP OUT OF REACH OF CHILDREN**

Harmful if swallowed or absorbed through skin. Causes skin irritation. Do not breathe vapor or spray mist. Do not get in eyes, on skin or on clothing. If taken internally, do not induce vomiting. Seek medical attention immediately. If splashed in eyes, immediately flush with large amounts of water for at least 15 minutes and get medical attention. In case of skin contact, wash thoroughly with soap and water. Remove and wash contaminated clothing before re-use. Wash thoroughly after handling.

DO NOT USE, POUR, SPILL OR STORE NEAR HEAT OR OPEN FLAME. Do not store near feed or food-stuffs. Do not contaminate waters used for irrigation or domestic use. Do not re-use empty container. Wash container with alkaline detergent and water and destroy by perforating and burying in a safe place or return to a drum reconditioner.

This product is toxic to fish and wildlife. Birds and other wildlife in treated areas may be killed. Keep out of any body of water. Do not contaminate water by cleaning of equipment or disposal of wastes.

See cautions elsewhere on container

Mfg. By: ROSE CHEMICAL PRODUCTS, Inc. 545 Stimmel Rd., Columbus, Ohio

**DIRECTIONS**

**HOW TO APPLY:** Do not dilute, use as supplied. Spray product uniformly at the rate given. Before treating, calibrate equipment for proper delivery.

**AMOUNT TO USE:**

**ANNUAL WEEDS AND GRASSES** (Such as crabgrass, foxtail, barnyardgrass, lambsquarter and pigweed) - Apply 1 to 2 gallons per 1000 square feet.

**PERENNIAL WEEDS AND GRASSES** (Such as smooth brome, quackgrass, Canada bluegrass, broomedge, aster, dandelion, goldenrod, plantain, wild carrot and purpletop) - Apply 2 to 4 gallons per 1000 square feet.

**OTHER HARD-TO-KILL PERENNIAL WEEDS AND GRASSES** (Such as Johnsongrass, saltgrass, Bermudagrass, horsetail, bouncing bet and bracken fern) - Apply 3 to 5 gallons per 1000 square feet.

**WHEN TO APPLY:** Apply at any time of the year except when the ground is frozen. Best results are obtained after predominant species have emerged and developed to a point where they are objectionable, usually in late spring or early summer. By preventing weed growth, early in year, fire hazards from dead and dry vegetation are avoided. Follow directions carefully.

**CAUTION:** Do not apply on or near turf or valuable trees or other desirable plants, or in areas where the roots may extend! This product should only be used where unproductive soil is not objectionable. Vapors from this product may injure susceptible plants in the immediate vicinity. Do not store near fertilizers, seeds, insecticides or fungicides. Avoid spray drift to susceptible plants, as this product may injure cotton, beans, peas, grapes, ornamentals etc. Coarse sprays are less likely to drift. Thoroughly clean spray equipment with a suitable cleaner after use.

Local conditions may affect the use of the product. Consult State Agricultural Extension or Experiment Station for specific recommendations.

A LIQUID VEGETATION KILLER TO BE APPLIED UNDILUTED AS A SPRAY ON NON-CROPLAND AREAS. AN EFFECTIVE GENERAL HERBICIDE FOR CONTROL OF MANY ANNUAL AND PERENNIAL WEEDS, AND IS PARTICULARLY USEFUL FOR THE CONTROL OF PERENNIAL GRASSES. PRODUCES RAPID TOP KILL OF ALL SUCCULENT VEGETATION. TRANSLOCATION AND ROOT ABSORPTION OF COMPONENT HERBICIDES PRODUCE EXTENSIVE ROOT KILL AND RESIDUAL CONTROL. THE DEGREE OF CONTROL AND DURATION OF EFFECT WILL VARY WITH THE AMOUNT OF PRODUCT APPLIED, SOIL TYPE, RAINFALL AND OTHER CONDITIONS.

**PRODUCT USES:**

USE WHERE NON-CROPLAND WEED CONTROL IS DESIRED, AND IN AREAS WHERE VEGETATION IS NOT WANTED.

**EXAMPLES:**

**INDUSTRIAL PLANTS** - Fences, warehouses, lumberyards, pipelines, mills and tank farm areas.

**HIGHWAYS** - Roadside markers, road shoulders, signposts, bridges and general highway maintenance.

**RAILROADS** - Rights of way, yards and trestles.

**UTILITIES** - Telephone, telegraph, and electric power lines, power lines, power sub-stations, and pipelines.

**OTHER** - Airfields, runways and taxi-strips, landing lights and markers; outdoor theatres, tennis courts; playgrounds; driveways and parking areas.

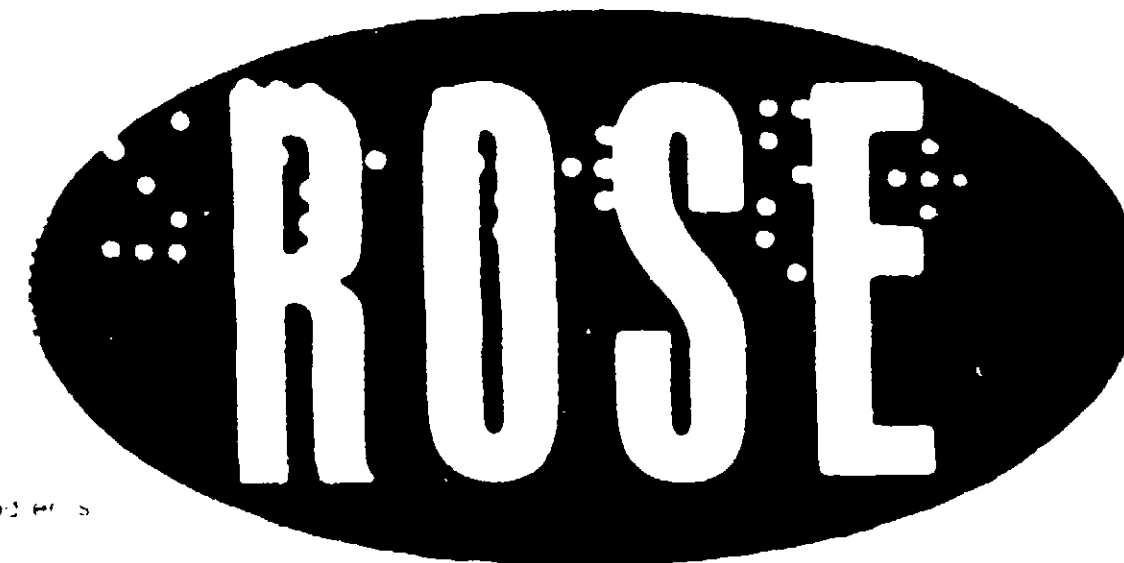
NET CONTENTS \_\_\_\_\_ GALLON(S)

LAB CONTROL NO. \_\_\_\_\_

**APPROVED**  
 9/11/72  
 FEDERAL INHERITANCE TAX ACT  
 POISON REGISTER  
 9312 15

**VOID**

A LIQUID VEGETATION KILLER TO BE APPLIED UNDILUTED AS A SPRAY ON NON-CROPLAND AREAS. AN EFFECTIVE GENERAL HERBICIDE FOR CONTROL OF MANY ANNUAL AND PERENNIAL WEEDS, AND IS PARTICULARLY USEFUL FOR THE CONTROL OF PERENNIAL GRASSES. PRODUCES RAPID TOP KILL OF ALL SUCCULENT VEGETATION. TRANSLOCATION AND ROOT ABSORPTION OF COMPONENT HERBICIDES PRODUCE EXTENSIVE ROOT KILL AND RESIDUAL CONTROL. THE DEGREE OF CONTROL AND DURATION OF EFFECT WILL VARY WITH THE AMOUNT OF PRODUCT APPLIED, SOIL TYPE, RAINFALL AND OTHER CONDITIONS.



**Active Ingredients**

- Petroleum
- 2,4-Dichlorophenoxyacetic acid isooctyl ester\*
- Bromacil (5-bromo-2 sec-butyl-4-methyluracil)
- Pentachlorophenol
- Other chlorophenols

**Inert Ingredients**

\* Equivalent to 0.70% 2,4-Dichlorophenoxyacetic acid (1:1) EPA Reg. No. 9313-15

**WARNING KEEP OUT OF REACH OF CHILDREN**

Harmful if swallowed or absorbed through skin. Causes skin irritation. Do not breathe vapor or spray mist. Do not get in eyes, on skin or on clothing. If taken internally, do not induce vomiting. Seek medical attention immediately. If splashed in eyes, immediately flush with large amounts of water for at least 15 minutes and get medical attention. In case of skin contact, wash thoroughly with soap and water. Remove and wash contaminated clothing before re-use. Wash thoroughly after handling.

DO NOT USE, POUR, SPILL OR STORE NEAR HEAT OR OPEN FLAME. Do not use near feed or food stuffs. Do not contaminate waters used for irrigation or domestic purposes. Empty container into container with alkaline detergent and water and destroy by pouring into a drain with plenty of water. Return to a drum reconditioner.

This product is toxic to fish and wildlife. Birds and other wildlife should be kept away from any body of water. Do not contaminate water. Do not use in or near streams, rivers, or ponds.

See cautions elsewhere on container.

Mfg. By: ROSE CHEMICAL PRODUCTS, Inc., 545 Stimmel Rd., Columbus, Ohio

WHE  
 grou  
 have  
 usu  
 early  
 Foli

WHE  
 grou  
 have  
 usu  
 early  
 Foli

CAU  
 desi  
 prod  
 able  
 imm  
 or fe  
 may  
 spre  
 with

Loc  
 Agr  
 atio

... RECOMMENDED FOR USE IN INDUSTRIAL PLANTS, AREAS, AND AREAS AS AN EFFECTIVE WEED CONTROL. IT IS EFFECTIVE AGAINST MANY ANNUAL AND PERENNIAL WEEDS AND IS EARLY REEPLY FOR THE CONTROL OF WEEDS. IT TAKES PROLONGED PERIODS TO CONTROL PERENNIAL VEGETATION. TRANSLOCATION OF WEEDS BY SOME COMPONENT HERBICIDES PRODUCE A SHORT-TERM KILL AND RESIDUAL CONTROL. THE DEGREE OF CONTROL AND DURATION OF EFFECT WILL VARY WITH THE AMOUNT OF PRODUCT APPLIED, SOIL TYPE, RAINFALL AND OTHER CONDITIONS.

**PRODUCT USES**

USE WHERE NON-CROPLAND WEED CONTROL IS DESIRED, AND IN AREAS WHERE VEGETATION IS NOT WANTED.

**EXAMPLES:**

**INDUSTRIAL PLANTS** - Fences, warehouses, lumberyards, pipelines, mills and tank farm areas.

**HIGHWAYS** - Roadside markers, road shoulders, signposts, bridges and general highway maintenance.

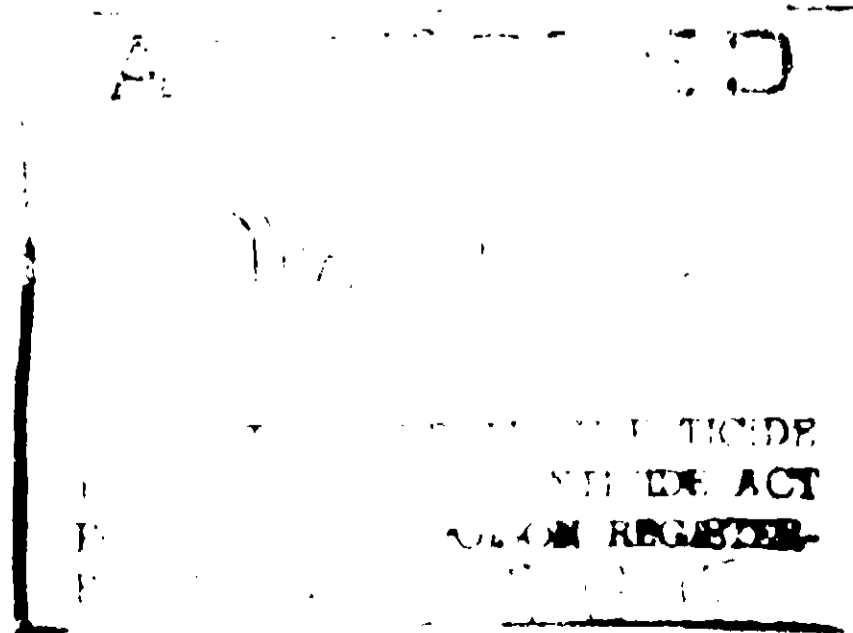
**RAILROADS** - Rights of way, yards and trestles.

**UTILITIES** - Telephone, telegraph, and electric power lines, power lines, power sub stations, and pipelines.

**OTHER** - Airfields, runways and taxi-strips, landing lights and markers, outdoor theatres, tennis courts, playgrounds, driveways and parking areas.

NET CONTENTS \_\_\_\_\_ GALLON(S)

LAB CONTROL NO. \_\_\_\_\_



**VOID**

A LIQUID, NON-SELECTIVE, PERSISTENT VEGETATION KILLER



**Active Ingredients**

- Petroleum 100%
- 2,4-Dichlorophenoxyacetic acid isooctyl ester 100%
- Bromochlorobenzene 100%
- Pentachlorophenol 100%
- Other chlorophenols 100%

**Net Ingredients**

1. Equivalent to 2,4-Dichlorophenoxyacetic acid 100%  
 EPA Reg. No. 100-100

**WARNING KEEP OUT OF REACH OF CHILDREN**

... if swallowed or absorbed through skin or inhaled ...  
 ... if splashed in eyes, immediately flush with water ...  
 ... if splashed on skin, immediately wash with water ...  
 ... if inhaled, get medical attention in case of skin contact ...

**DO NOT USE** ...  
 ... Do not contaminate water ...  
 ... Do not use with a hard detergent ...

... Do not use in areas where water ...  
 ... Do not use in areas where water ...

Mfg. by ROSE CHEMICAL PRODUCTS ...

HOW  
form  
prop  
AMC

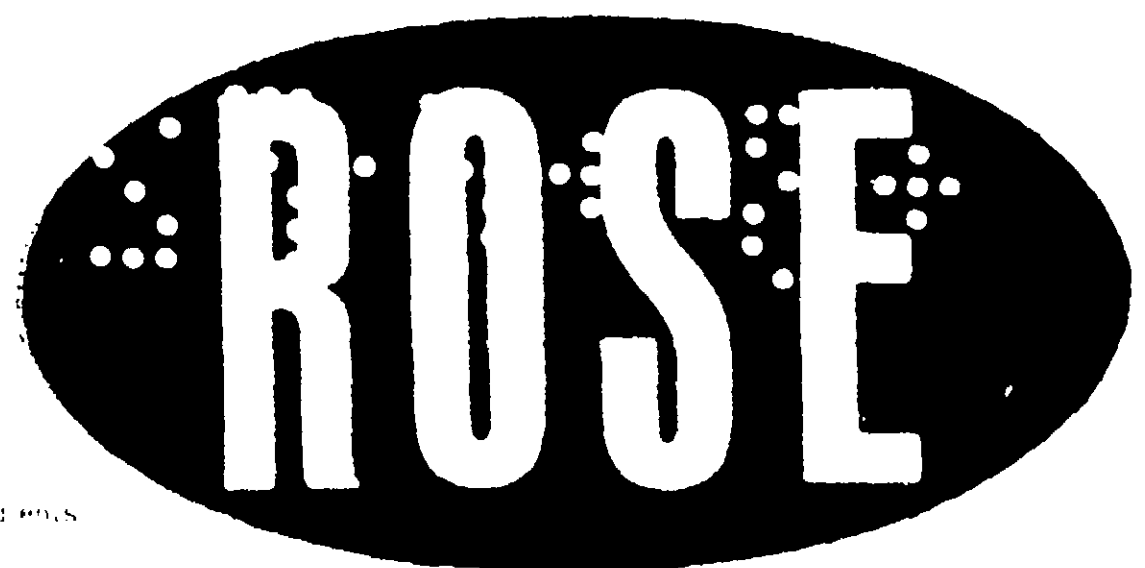
WHE  
grou  
have  
usu  
early  
Foll

CAU  
desi  
prod  
able  
imm  
or fu  
may  
spr  
with

Loc  
Agi  
atio

# VOID

A LIQUID, NON-SELECTIVE, PERSISTENT VEGETATION KILLER



Active ingredients

- Petroxide
- 2,4-D (2,4-dichlorophenoxyacetic acid) sodium salt
- Bromoxynil (3-bromo-2,6-dimethyl-4-nitrophenol)
- Pendimethalin
- Trifluralin

Inert ingredients

Water-soluble salts, fillers, stabilizers, wetting agents, emulsifiers, preservatives, and other inert ingredients.

## WARNING KEEP OUT OF REACH OF CHILDREN

Do not swallow. If swallowed, immediately drink large quantities of water. Do not induce vomiting. If inhaled, get fresh air immediately. If sprayed into eyes, immediately flush with large quantities of water for at least 15 minutes. Get medical attention if irritation persists. Wash thoroughly with soap and water before eating, drinking, or using tobacco.

DO NOT USE NEAR SPRINGS, WELLS, OR NEAR HEAVY FEEDING ANIMALS. Do not use near waterways, streams, or ponds. Do not use near water used for irrigation. Do not use near water used for drinking. Wash thoroughly with soap and water after use.

Do not use on lawns, lawns, or other desirable plants. Do not use on areas where the roots of desirable plants may extend. Do not use on areas where the roots of desirable plants may extend. Do not use on areas where the roots of desirable plants may extend.

Mfg. by ROSE CHEMICAL PRODUCTS, INC., ONE ...

## DIRECTIONS

**HOW TO APPLY:** Do not dilute, use as supplied. Spray product uniformly at the rate given. Before treating, calibrate equipment for proper delivery.

### AMOUNT TO USE

**ANNUAL WEEDS AND GRASSES** (Such as crabgrass, foxtail, barnyardgrass, lambsquarter and pigweed) – Apply 1 to 2 gallons per 1000 square feet.

**PERENNIAL WEEDS AND GRASSES** (Such as smooth brome, quackgrass, Canada bluegrass, broomsedge, aster, dandelion, goldenrod, plantain, wild carrot and purpletop) – Apply 2 to 4 gallons per 1000 square feet.

**OTHER HARD-TO-KILL PERENNIAL WEEDS AND GRASSES** (Such as Johnsongrass, saltgrass, Bermudagrass, horsetail, bouncing bet and bracken fern) – Apply 3 to 5 gallons per 1000 square feet.

**WHEN TO APPLY:** Apply at any time of the year except when the ground is frozen. Best results are obtained after predominant species have emerged and developed to a point where they are objectionable, usually in late spring or early summer. By preventing weed growth early in year, fire hazards from dead and dry vegetation are avoided. Follow directions carefully.

**CAUTION:** Do not apply on or near turf or valuable trees or other desirable plants, or in areas where the roots may extend! This product should only be used where unproductive soil is not objectionable. Vapors from this product may injure susceptible plants in the immediate vicinity. Do not store near fertilizers, seeds, insecticides or fungicides. Avoid spray drift to susceptible plants, as this product may injure cotton, beans, peas, grapes, ornamentals, etc. Coarse sprays are less likely to drift. Thoroughly clean spray equipment with a suitable cleaner after use.

Local conditions may affect the use of the product. Consult State Agricultural Extension or Experiment Station for specific recommendations.

AGRICULTURAL EXTENSION SERVICE

**CAUTION**

**CONTAINS METHYL  
ISOBUTYL KETONE  
AND CUPROUS OXIDE**

DO NOT USE, POUR, SPILL OR  
STORE NEAR HEAT OR OPEN  
FLAME.

Avoid breathing of vapor or spray  
mist.

Avoid contact with skin.

Do not take internally.

Close container after using. Do not  
reuse empty container. Destroy it  
by perforating or crushing. Bury  
or discard in a safe place.

FIRST AID: If swallowed, do NOT  
induce vomiting.

CALL A PHYSICIAN.

**USE WITH ADEQUATE  
VENTILATION**

# DEVOLVE

# MARINE

**PAINTS & COATINGS · WORLD-WIDE**

**FORMULA 129**

**VINYL BLACK ANTI-FOULING MIL-P-16189**

**MD-**

**CAUTION**

**KEEP OUT OF REACH OF CHILDREN**

**VAPOR HARMFUL—COMBUSTIBLE  
HARMFUL IF SWALLOWED**

Read carefully cautions on left panel

**FOR USE BY PROFESSIONAL APPLICATORS ONLY**

**ANTI-FOULING INGREDIENTS**

**ACTIVE INGREDIENTS**

Cuprous Oxide

**INERT INGREDIENTS**

63.20%\*

36.80%

100.00%

\*Equivalent to

Metallic Copper

BATCH NO.

4/14/72  
9461-16

**5 U. S. GALLONS**

REG. NO. 9461-

Be  
free  
oil.  
wire  
oug  
pou  
to a  
time  
App  
ship  
spr  
DEV  
not  
pali  
coat  
Ant  
plic  
and  
to n  
any  
und

D  
s