

October 25, 1974

9283-1

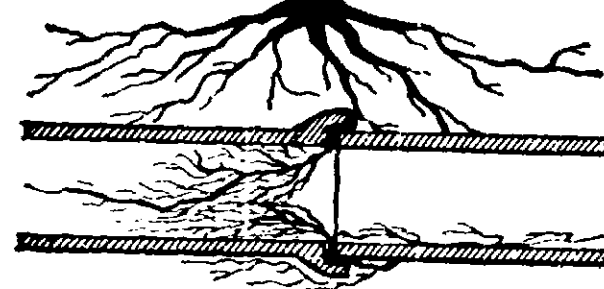
**NET WEIGHT -- 2 POUNDS**

**ROOTROL** WILL CLEAR SEWER LINES OF ROOTS, FUNGI AND AQUATIC GROWTHS IF DIRECTIONS ARE FOLLOWED AND ENOUGH TIME IS ALLOWED.

DON'T EXPECT IMMEDIATE RESULTS AS SEVERAL HOURS OR MORE ARE REQUIRED TO KILL ROOT CELLS AFTER TREATMENT. OTHER CONDITIONS MAY REQUIRE A DAY OR TWO BEFORE THE DEAD ROOTS ARE WASHED AWAY AND NORMAL FLOW IS RESUMED.

NEVER PUT **ROOTROL** IN SINKS, LAVATORIES, TUBS OR METAL VESSELS, OR LET IT COME IN CONTACT WITH CHROME FIXTURES. **ROOTROL** WILL NOT RELIEVE STOPPAGES CAUSED BY BROKEN PIPE OR DEFECTIVE INSTALLATIONS. NEITHER WILL IT DISSOLVE GREASE.

**ROOTROL®**



**Destroys and Prevents Roots**

**DANGER - POISON**

**ROOTROL** IS A POWERFUL CONCENTRATED CHEMICAL THAT WILL DESTROY TREE AND SHRUB ROOTS, FUNGI AND AQUATIC GROWTHS. IT WILL ALSO CONTROL AND PREVENT FUTURE GROWTH.

**ROOTROL** CONTAINS NO ACIDS NOR CAUSTIC SODA. IT IS HARMFUL IF TAKEN INTERNALLY.

**DIRECTIONS**

USE **ROOTROL** AT NIGHT OR WHEN PLUMBING IS IN MINIMUM USE AS EXCESSIVE FLOW REDUCES THE CHEMICAL ACTION AT THE ROOT CELLS.

DRAIN PIPES CONNECTING HOUSE TO STREET SEWER. USE ENTIRE CAN OF **ROOTROL**. POUR 1/4 OF CONTENTS INTO TOILET BOWL NEAREST SEWER LINE. THEN FLUSH THOROLY UNTIL ALL CHEMICALS HAVE DISAPPEARED. REPEAT UNTIL CAN IS EMPTY. FLUSHING BOWL SEVERAL TIMES.

WHERE SERIOUS ROOT TROUBLE HAS EXISTED FOR SOME TIME 2 OR 3 ADDITIONAL CANS MAY BE NECESSARY. CONTINUE USING **ROOTROL** EVERY MONTH UNTIL COMPLETE FREE FLOWING CONDITIONS IN THE SEWER ARE RESTORED. USE TWICE A YEAR TO PREVENT NEW ROOT GROWTH FROM PENETRATING SEWER JOINTS.

COMPLETE STOPPAGES: IF WATER HAS BACKED UP INTO BASEMENT, PUSH ROD THROUGH STOPPAGE SO SUFFICIENT WATER WILL DRAIN OFF TO ALLOW **ROOTROL** TO FLOW TOWARD ROOT GROWTH.

THIS PRODUCT IS TOXIC TO FISH. KEEP OUT OF LAKES, STREAMS OR PONDS. DO NOT CONTAMINATE WATER BY LEAKING OR EQUIPMENT OR DISPOSAL OF WASTES. APPLY THIS PRODUCT ONLY AS SPECIFIED ON THIS LABEL.

DO NOT REUSE CONTAINER. DESTROY WHEN EMPTY.

SEPTIC TANK DRAINAGE FIELDS: POUR ONE CAN INTO DISTRIBUTION PIPES OUTSIDE OF SEPTIC TANK.

EPA Reg. No. 9483-1

9283-1

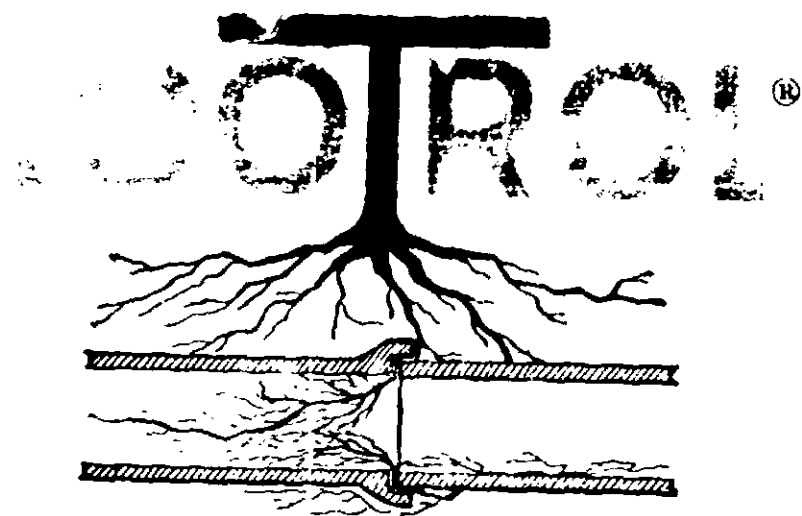
9283-1

**NET WEIGHT -- 2 POUNDS**

**ROOTROL** WILL CLEAR SEWER LINES OF ROOTS, FUNGI AND AQUATIC GROWTHS IF DIRECTIONS ARE FOLLOWED AND ENOUGH TIME IS ALLOWED.

DON'T EXPECT IMMEDIATE RESULTS AS SEVERAL HOURS OR MORE ARE REQUIRED TO KILL ROOT CELLS AFTER TREATMENT. OTHER CONDITIONS MAY REQUIRE A DAY OR TWO BEFORE THE DEAD ROOTS ARE WASHED AWAY AND NORMAL FLOW IS RESUMED.

NEVER PUT **ROOTROL** IN SINKS, LAVATORIES, TUBS OR METAL VESSELS OR LET IT COME IN CONTACT WITH CHROME FIXTURES. **ROOTROL** WILL NOT RELIEVE STOPPAGES CAUSED BY BROKEN PIPE OR DEFECTIVE INSTALLATIONS. NEITHER WILL IT DISSOLVE GREASE.



**Destroys and Prevents Roots**

**ROOTROL** IS A POWERFUL CONCENTRATED CHEMICAL THAT WILL DESTROY TREE AND SHRUB ROOTS, FUNGI AND AQUATIC GROWTHS. IT WILL ALSO CONTROL AND PREVENT FUTURE GROWTH.

**ROOTROL** CONTAINS NO ACIDS NOR CAUSTIC SODA. IT IS HARMFUL IF TAKEN INTERNALLY.

**DIRECTIONS**

USE **ROOTROL** AT NIGHT OR WHEN PLUMBING IS IN MINIMUM USE AS EXCESSIVE FLOW REDUCES THE CHEMICAL ACTION AT THE ROOT CELLS.

DRAIN PIPES CONNECTING HOUSE TO STREET SEWER: USE ENTIRE CAN OF **ROOTROL**. POUR 1/4 OF CONTENTS INTO TOILET BOWL NEAREST SEWER LINE. THEN FLUSH THOROUGHLY UNTIL ALL CHEMICALS HAVE DISAPPEARED. REPEAT UNTIL CAN IS EMPTY. FLUSHING BOWL SEVERAL TIMES.

WHERE SERIOUS ROOT TROUBLE HAS EXISTED FOR SOME TIME 2 OR 3 ADDITIONAL CANS MAY BE NECESSARY. CONTINUE USING **ROOTROL** EVERY MONTH UNTIL COMPLETE FREE FLOWING CONDITIONS IN THE SEWER ARE RESTORED. USE TWICE A YEAR TO PREVENT NEW ROOT GROWTH FROM PENETRATING SEWER JOINTS.

COMPLETE STOPPAGES: IF WATER HAS BACKED UP INTO BASEMENT, PUSH ROD THROUGH STOPPAGE SO SUFFICIENT WATER WILL DRAIN OFF TO ALLOW **ROOTROL** TO FLOW TOWARD ROOT GROWTH.

THIS PRODUCT IS TOXIC TO FISH. KEEP OUT OF LAKES, STREAMS OR POND. DO NOT CONTAMINATE WATER BY CLEANING OR REPAIRING OF DISPOSAL OF WASTE. APPLY THIS PRODUCT ONLY AS SPECIFIED ON THIS LABEL.

DO NOT REUSE CONTAINER FOR OTHER PURPOSES.

SEPTIC TANK DRAINAGE FIELDS: POUR ONE CAN INTO THE TRIPPLE HOLES OF EACH OF THE SEPTIC TANKS.

EPA Reg. No. 9283-1