

This product is a new herbicidal chemical, when used as directed, will kill most all forms of plant growth without damage to the soil. Absorption and herbicidal action is usually quite rapid with effects visible in a few days. This product is inactivated on contact with soil.

**GENERAL INFORMATION**

**USES:**

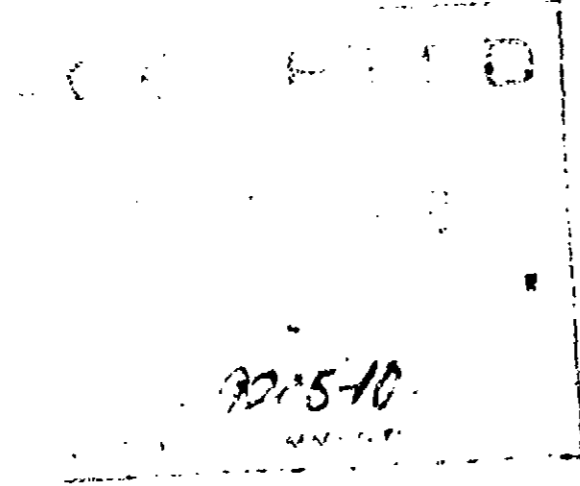
1. General weed control in non-crop areas. Controls broadleaf weeds, brush and grasses. Kills most every type of plant life on contact. It kills through the leaves only.
2. General weed control in shrub areas. Chemical will not injure desirable plants as long as spray does not come in contact with leaves of these plants. Chemical becomes inactive on contact with soil, therefore plant roots do not take up chemical and chemical does not build up and become toxic at a later date.
3. Spot weed control in lawns and other areas—will kill undesirable grasses in lawns if these grasses are spot sprayed.
4. General vegetation control around buildings and other installations, gardens, walkways, patios, storage areas, beneath greenhouse benches,

fence lines, golf courses, parkways, driveways, ditches, sand traps and other areas where any type of vegetation is undesirable.

5. Aquatic weed control. Both surface and subsurface, in ponds, lakes, and drainage.

**DIRECTIONS**

**NON CROP OR NON-PLANTED AREAS:** To kill above ground weed growth around buildings and other installations, gardens, walkways, patios, beneath greenhouse benches, fence lines, golf courses, parkways and driveways for control of undesirable broadleaved and grass type weeds—1 gal. per 20 gals. water (6 1/2 oz. per gal. water). Apply for full coverage and thorough weed contact. Apply preferably to young growth and up to seeding of weeds. Repeat applications necessary to maintain control, particularly on grasses and established weeds. Avoid spray contact with foliage or food crops or ornamental plants. Do not water treated areas for 24 to 36 hours after application.



# AQUA-KILL #101

## Non Selective Aquatic Weed Killer

### A CONTACT, NON-SELECTIVE VEGETATION KILLER FOR THE CONTROL OF BROADLEAF WEEDS, GRASSES, AND AQUATIC WEEDS.

**ACTIVE INGREDIENTS:**  
 Diquat dibromide (6,7-Dihydroxyridol) (1,2-d-2,1'-C) pyrazidinium dibromide\* 1.85%  
**INERT INGREDIENTS:** 98.15%  
 \*Contains 2 lbs. salt per gal.

### CAUTION: KEEP OUT OF REACH OF CHILDREN

READ ENTIRE LABEL. USE STRICTLY IN ACCORDANCE WITH LABEL CAUTIONS, WARNINGS AND DIRECTIONS; AND IN CONFORMITY WITH FEDERAL AND STATE REGULATIONS. WASH AND DESTROY CONTAINER WHEN EMPTY. NEVER RE-USE.  
**DO NOT TAKE INTERNALLY.** Harmful if swallowed. Avoid contact with skin, eyes and clothing. Concentrate may cause skin damage. Use waterproof gloves and face shield or goggles when handling concentrate. Avoid breathing spray mist. In case of accidental contact, immediately remove clothing and wash thoroughly and get medical attention. For eyes, wash thoroughly with water. Do not store with or near feed and foodstuffs or drinking water. During application avoid drift to adjacent food and forage plantings that might be damaged or the crops thereof rendered unfit for sale, use or consumption. Do not use treated water for human or animal consumption, swimming, spraying or overhead and furrow irrigation within 10 days after treatment. Do not apply to muddy water and do not agitate water excessively with board motor or injection equipment during application. Do not feed forage from treated crops to livestock. Keep livestock out of treated feeds and crop areas. Wash sprayer immediately after application with detergent and water, then rinse with clean water.

Manufactured by:  
**GREEN LAWN PRODUCTS Co.**  
 Chicago, Illinois

**AQUATIC USE DIRECTIONS**  
 AQUATIC WEEDS (infesting Still or Slow Flowing Ponds, Lakes, Ditches, Laterals, Canals)

WATER TREATMENTS	Gals./SURFACE ACRE	PPM**
*Algae (Spirogyra and Pithophora spp.)		1/2 to 1 1/2
Bladderwort (Utricularia spp.)	20 to 40 gal.	1/4 to 1/2
Coontail (Ceratophyllum demersum)		1 1/2 to 2 1/2
Elodea (Elodea spp.)		1 1/2 to 2 1/2
Najas (Najas spp.)	20 gal.	1/4
*Pondweed (Potamogeton spp.)	40 gal.	1/4
Watermilfoil (Myriophyllum spp.)	20 to 40 gal.	1/4 to 1/2

**WATER TREATMENTS:** Make application from a boat or other suitable craft either by injecting this product below the water surface, or by pouring it directly from the container into the water while moving slowly over the water surface. \*Repeat application may be necessary under conditions of heavy infestations or where reinfestation may readily occur from seed, fragmentation or escapes.

\*\*This product cation by weight. (See dilution chart.)  
**CAUTION:** When treating water areas containing fish, aquatic weed control should proceed stepwise—in bands. Large areas of decaying vegetation lowers the oxygen content of water and results in serious loss of fish. Do not apply to muddy water. Check with state authority for necessary permits.

**DILUTION CHART**  
 to Use per Acre at indicated PPM Cation (By Wt.)

Depth of Water (Feet)	1/4 ppm	1/2 ppm	1 ppm	1 1/2 ppm	2 1/2 ppm
1	7 gal.	14 gal.	28 gal.	42 gal.	70 gal.
2	14 gal.	28 gal.	56 gal.	84 gal.	140 gal.
3	21 gal.	42 gal.	84 gal.	126 gal.	201 gal.
4	28 gal.	56 gal.	112 gal.	168 gal.	280 gal.
5	35 gal.	70 gal.	140 gal.	201 gal.	350 gal.

**FOLIAGE SPRAY TREATMENTS**

Plant Species	AMOUNT/ACRE
Salvinia (Salvinia rotundifolia)	10 to 15 gal.
Water hyacinth (Eichhornia crassipes)	10 to 15 gal.
Waterlettuce (Pistia stratiotes)	10 to 15 gal.

**FOLIAGE SPRAY TREATMENTS** should be applied in sufficient water (150-200 gals. per acre) to thoroughly wet foliage. As the season progresses and vegetation increases in mass, the higher dosages indicated should be used and more uniform distribution is necessary. Local conditions may affect the use of this chemical. Consult competent State or local agricultural authorities for specific recommendations as to dosage and time of application, and for control of other weeds. Check with state authorities for necessary permits.

Net Contents: GAL.

U.S.P.A. Reg. No.