


9198-153

05/08/2007

116

	<b>U.S. ENVIRONMENTAL PROTECTION AGENCY</b> <b>Office of Pesticide Programs</b> <b>Registration Division (7505P)</b> <b>Ariel Rios Building</b> <b>1200 Pennsylvania Ave., NW</b> <b>Washington, D.C. 20460</b>		EPA Reg Number: 9198-153	Date of Issuance: 05/08/07
	NOTICE OF PESTICIDE: ___ Registration <input checked="" type="checkbox"/> Reregistration (under FIFRA, as amended)		Term of Issuance	Name of Pesticide Product: The Andersons Weed & Feed with Atrazine
Name and Address of Registrant (include ZIP Code):  Dawn L. Walters The Andersons Lawn Fertilizer Division, Inc. DBA/Free Flow Fertilizer P.O. Box 119 Maumee, OH 43537				
Note: Changes in labeling differing in substance from that accepted in connection with this registration must be submitted to and accepted by the Registration Division prior to use of the label in commerce. In any correspondence on this product always refer to the above EPA registration number.				
<p>On the basis of information furnished by the registrant, the above named pesticide is hereby registered/reregistered under the Federal Insecticide, Fungicide and Rodenticide Act. Registration is in no way to be construed as an endorsement or recommendation of this product by the Agency. In order to protect health and the environment, the Administrator, on his motion, may at any time suspend or cancel the registration of a pesticide in accordance with the Act. The acceptance of any name in connection with the registration of a product under this Act is not to be construed as giving the registrant a right to exclusive use of the name or to its use if it has been covered by others.</p> <p>The label described above, submitted under the Federal Insecticide, Fungicide, and Rodenticide Act (FIFRA), as amended, is acceptable. This product is re-registered in accordance with FIFRA sec. 4(g)(2)(C). Reregistration under this section of the Act does not eliminate the need for continual assessment of the registration of this product.</p> <p>This labeling supersedes all previous accepted labeling for this product.</p> <p>A copy of the label stamped accepted is enclosed for your records. Please submit one copy of the final printed labeling when product is released for shipment.</p>				
Signature of Approving Official: James A. Tompkins Product Manager 25 Herbicide Branch Registration Division (7505P)			Date:  MAY -- 8 2007	

216

Front Panel

# The Andersons Weed & Feed with Atrazine

Controls grassy and broadleaf weeds while feeding your lawn with a premium blend of fertilizer nutrients that provide quick and extended greening.

### ACTIVE INGREDIENT:

Atrazine .....	0.92%
Related Compounds .....	0.02%
<b>INERT INGREDIENTS</b> .....	<b>98.88%</b>
Total .....	100.00%

Contains 18.36 lbs. of Atrazine per ton. This is equivalent to an actual application rate of 2 lbs. Atrazine per acre when used according to label.

- Contains Atrazine
- For thick, green, weed-free turf
- Contains Poly-S® controlled release nitrogen for extended greening
- For use on St. Augustine, Carpetgrass, Centipede and Zoysia lawns ONLY
- Controls Dollarweed and other common weeds

### Optional for subregistrant:

- Specially formulated to feed and control weeds in St. Augustine and other Southern Lawns
- 100% Satisfaction, Bayer, A Better Lawn Guaranteed!, Or your money back

## CAUTION

**KEEP OUT OF REACH OF CHILDREN**

FIRST AID	
If swallowed:	Call a poison control center or doctor for treatment advice. Have person sip a glass of water if able to swallow. Do not induce vomiting unless told to by a poison control center or doctor. Do not give anything by mouth to an unconscious person.
If on skin or clothing:	Take off contaminated clothing. Rinse skin immediately with plenty of water for 15-20 minutes. Call a poison control center or doctor for treatment advice.
If in eyes:	Hold eye open and rinse slowly and gently with water for 15-20 minutes. Remove contacts, if present, after the first 5 minutes, then continue rinsing. Call a poison control center or doctor for treatment advice.
If inhaled:	Move person to fresh air. If person is not breathing, call 911 or an ambulance, then give artificial respiration, preferably mouth-to-mouth if possible. Call a poison control center or doctor for treatment advice.

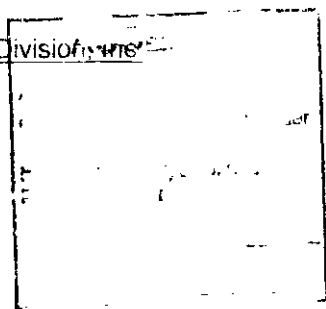
Have the product container or label with you when calling a poison control center or doctor or going for treatment. You may also contact 1-800-757-8951 for emergency medical treatment information.

### SEE BACK PANEL FOR ADDITIONAL PRECAUTIONARY STATEMENTS

Net Weight 25 lbs. (11.34 kg)  
Covers 5,000 Sq. Ft. 50' x 100'

EPA Reg. No. 9198-153  
EPA Est. 9198-OH-1M, 9198-OH-2B, 9198-AL-001A  
Underlined letter is first letter used in run code on bag

Manufactured by:  
The Andersons Lawn Fertilizer Division  
d/b/a Free Flow Fertilizer  
PO Box 119  
Maumee, OH 43537



**ACCEPTED**

05-08-07

Under the Federal Insecticide, Fungicide, and Rodenticide Act as amended, for the pesticide registered under EPA Reg. No.

9198-153

3/6

Back Panel

Net Weight 25 lbs. (11.34 kg)  
Covers 5,000 Sq. Ft. 50' x 100'

## The Andersons Weed & Feed with Atrazine

### Guaranteed Analysis

Total Nitrogen (N) .....	X%
Available Phosphate (P <sub>2</sub> O <sub>6</sub> ) .....	X%
Soluble Potash (K <sub>2</sub> O) .....	X%

Plant Nutrients Derived From:

*For products being sold into states with requirement for fertilizers:*

Information regarding the contents and levels of metals in this product is available on the internet at <http://www.regulatory-info-XX-com/>

When applied as directed, this product meets the guidelines for metals adopted by the Association of American Plant Food Control Officials.

### KEEP OUT OF REACH OF CHILDREN

### PRECAUTIONARY STATEMENTS

### HAZARDS TO HUMANS AND DOMESTIC ANIMALS

CAUTION: Harmful if swallowed. Harmful if absorbed through the skin. Causes moderate eye irritation. Avoid contact with eyes, skin or clothing. Wash hands before eating, drinking, chewing gum, using tobacco, or using the toilet. Avoid inhalation or contact with eyes. Wash after handling or using. Keep away from feed or food products.

Applicators and other handlers must wear

- long-sleeved shirt and long pants
- shoes plus socks

User Safety Requirements: Follow the manufacturer's instructions for cleaning/maintaining PPE. If no such instructions for washables, use detergent and hot water. Keep and wash PPE separate from other laundry.

### User Safety Recommendations:

- Users should remove clothing/PPE immediately if pesticide gets inside. Then wash thoroughly and put on clean clothing.
- Users should remove PPE immediately after handling this product. Wash the outside of gloves before removing. As soon as possible, wash thoroughly and change into clean clothing.

Do not apply granular lawn products by hand. Avoid contact with hands or skin. Broadcast applications must NOT be made using hand-held devices, such as a belly grinder or handheld rotary applicator. Such equipment may only be used for spot treatments.

### ENVIRONMENTAL HAZARDS

Atrazine can travel (seep or leach) through soil and can enter ground water which may be used as drinking water. Atrazine has been found in ground water. Users are advised not to apply Atrazine to sand and loamy soil where the water table (ground water) is close to the surface and where these soils are very permeable, i.e. well drained. Your local agricultural agencies can provide further information on the type of soil in your area and the location of ground water. This product is toxic to aquatic invertebrates. Do not apply directly to water to areas where surface water is present or to intertidal areas below the mean high water mark. Runoff and drift from treated areas may be hazardous to aquatic organisms in neighboring areas. Do not contaminate

4/6

Back Panel

water when disposing of equipment washwaters. Do not apply on ornamental trees, shrubs, bedding plants, flowers or garden plants since injury may result.

**DIRECTIONS FOR USE**

It is a violation of Federal Law to use this product in a manner inconsistent with its labeling. Not for use on turf being grown for sale or other commercial use as sod, or for commercial seed production, or for research purposes.

**APPLICATION INFORMATION**

**WHEN TO APPLY**

For best results apply before weeds come up. Established weeds and are more difficult to control and may require an application in the spring and the fall. Usually application made between January 1 and March 1 give the best control although applications may be made through June 15 with good control of most weeds listed. To control certain winter weeds such as Henbit, Chickweed, Rabbit Tobacco, Florida Betony and Evening Primrose, a fall application will be required.

**AMOUNT TO USE**

Apply this product at a rate of 25 lbs. per 5,000 square feet and water in well after application.

**IMPORTANT USE PRECAUTIONS**

DO NOT APPLY THIS PRODUCT ON OR OVER THE ROOT ZONE OF ORNAMENTAL TREES, SHRUBS, BEDDING PLANTS, FLOWERS, OR GARDEN PLANTS OR INJURY TO THESE PLANTS MAY RESULT. Do not apply to lawns containing grasses or mixtures of grasses other than those listed on the label or injury to these grasses may result. Do not apply to newly seeded Zoysia, Centipede, and Carpetgrass lawns until after the new grass has been mowed at least twice. Do not plant new sprigs for one month, or sow new grass seed for six months following the application of this product. May be applied to newly sprigged St. Augustine and Zoysia lawns one week after sprigging to prevent competition from germinating weeds. Do not plant any flower or vegetable gardens to treated areas for 18 months or injury may result. Apply this product only when grass blades are dry.

Do not apply this product in a way that will contact any person or pet, either directly or through drift. Keep people and pets out of area during application.

This product must be watered in immediately after application.

**Entry Restrictions**

Do not enter or allow others to enter the treated area until dusts have settled. If soil incorporation is required after the application, do not enter or allow others to enter the treated area (except those involved in the incorporation) until the incorporation is complete. If the incorporation is accomplished by watering-in, do not enter or allow others to enter the treated area until the surface is dry after the watering-in.

~~Do not enter or allow others to enter treated area (except those involved in the watering-in) until the watering-in is completed and the surface is dry.~~

**CONTROLS OR SUPPRESSES COMMON WEED TYPES**

The product is designed to promote lush green growth in lawns and control or suppress suppresses many broadleaf weeds such as:

<b>Mat Lippia (diagram)</b>	<b>Dollar Weed (diagram)</b>	<b>Chickweed (diagram)</b>	<b>Knotweed (diagram)</b>
Annual Bluegrass (poa annua)	Cutleaf Evening Primrose Dandelion	Oxalis (common, yellow woodsorrel)	Parsley-Piert
Annual Sowthistle	Dichondra		

Back Panel

Annual Clover	Dollarweed	Red Sorrel
Black Medic	Florida Betony	Rescue Grass
Blue Toadflax	(rattlesnakeweed)	Sandspur
Bull Paspalum	Florida Pusley	Shepards Purse
Buckhorn Plantain	Fragrant Cudweed	Spotted Spurge
Bur Clover	(rabbit tobacco)	Spurweed
Carolina Geranium (cransebill)	Henbit	Stinging Nettle
Chickweed	Knotweed	Swinecrest
(common & mousear)	Lespedeza	Venus Looking Glass
Common Purslane	Mat Lippia	Virginia Creeper
Crabgrass	(matchweed, creeping charlie)	Virginia Pepperweed
Cudweed	Money wart	Wild Mustard
	Narrowleaf Vetch	Yellow Nutsedge

**Broadcast Spreader Settings**

For one pass application: For best results, apply in a circular path starting on the outside and working toward the center. A little overlap of product will ensure complete coverage. (DIAGRAM OF PATH)

*Note: following will be a listing of spreaders and settings: this will vary due to market of spreaders (this statement will not appear on the final printed label)*

**Drop Spreader Settings**

For one pass application: First apply 2 border strips along the edge of each end of the lawn. Then apply products along the length of the lawn, overlapping slightly and shutting off the spreader before turning as you reach the edge of the border strips. (DIAGRAM OF PATH)

*Note: following will be a listing of spreaders and settings: this will vary due to market of spreaders (this statement will not appear on the final printed label)*

To determine square footage of application area, follow calculation to the right. (Diagrams to show how to determine square footage)

**STORAGE AND DISPOSAL**

Do not contaminate water, food or feed by storage or disposal.

**PESTICIDE STORAGE:** Store in the original container in a cool, dry area out of reach of children.

**PESTICIDE DISPOSAL:** If partly filled: Call your local solid waste agency or 1-800-CLEANUP for disposal instructions. Never place unused product down any indoor or outdoor drain.

**CONTAINER DISPOSAL:** If empty: Do not reuse this container. Place in trash or offer for recycling if available.

**IMPORTANT: READ BEFORE USE:**

Read the entire Directions for Use and the Warranty Disclaimer and Limitation of Liability before using this product. If terms are not acceptable, return the unopened product container at once. By using this product, user or Buyer accepts the following Warranty Disclaimer and Limitation of Liability:

**WARRANTY DISCLAIMER and LIMITATION of LIABILITY:**

Manufacturer warrants that this product conforms to the chemical description on the label and is reasonably fit for the purposes stated on the label when used in strict accordance with the directions. Manufacturer makes NO OTHER EXPRESS OR IMPLIED WARRANTY OF MERCHANTABILITY OR FITNESS FOR A PARTICULAR PURPOSE. Where permissible, it is Manufacturer's intent to LIMIT ANY LIABILITY FOR SPECIAL, CONSEQUENTIAL OR INCIDENTAL ECONOMIC DAMAGES to refund of purchase price or replacement of product, at Buyer's choice. Manufacturer DISCLAIMS ANY LIABILITY FOR COMPENSATORY OR OTHER DAMAGES ARISING OUT OF ANY USE CONTRARY TO LABEL DIRECTIONS. Use contrary to label directions is not permitted.

**LEGAL RIGHTS:**

THIS LIMITED WARRANTY GIVES YOU SPECIFIC LEGAL RIGHTS; YOU MAY HAVE OTHER RIGHTS THAT VARY FROM STATE/JURISDICTION TO STATE/JURISDICTION.(RVred050207)

Manufactured by:  
 The Andersons Lawn Fertilizer Division, Inc. d/b/a Free Flow Fertilizer  
 PO Box 119  
 Maumee, OH 43537

Questions, Comments, Information? 1-888-246-0024

*Following is Optional for subregistrant:*

Bayer Advanced Lawn® Triple Action Southern Lawn Fertilizer PLUS Weed Control<sup>ll</sup> kills unsightly weeds such as dollarweed, dandelion, matchweed, and oxalis while it nourishes your lawn. Its Triple Action formula contains slow release nitrogen which continuously feeds the grass, roots and soil for up to two full months. And it's guaranteed not to burn. The result is a greener, thicker, weed-free lawn. You're just one application away from a better lawn... that's the Bayer Better Lawn Guarantee.

Triple Action Feeding works at every level for a Deep-Down Green!  
 Why is Triple Action better? By feeding at all levels, your lawn receives the primary nutrients it needs to thrive. This ensures thicker, green grass, stronger root systems, and richer soil-the keys to building a lush lawn that lasts.

- Grass Builds thicker, greener grass and enhances overall appearance
- Roots Builds stronger, deeper root systems which transport nutrients from the soil to the grass to help your lawn withstand heat-stress and drought.
- Soil Enriches and fortifies your soil. Rich, fertile soil provides a foundation for establishing roots and replenishes vital primary functions.

**4-Step Annual Program**

Apply Early Spring Feb. – April	Apply Spring Jan. – May	Apply Summer June – Aug.	Apply Fall Oct. – Nov.
{Diagram of crabgrass preventer product}	{Diagram of weed & feed product}	{Diagram of fertilizer product}	{Diagram of winterizer product}
Stops crabgrass Feeds lawn	Kills weeds Feeds lawn	Revitalizes lawn Fights heat stress	Boosts root development Improves spring green-up

**READ THE LABEL FIRST! {CLI diagram}**

- Kills weeds and feeds the lawn in one easy step
- Prevents new weeds before they start
- Builds a greener, thicker lawn
- Guaranteed not to burn

For questions or comments, call toll-free: 1-XXX-XXX-XXXX  
 Or visit us on-line at: [www.{website address}.com](http://www.{website address}.com)

Money back guarantee: If you are not satisfied with this product, we will gladly refund your original purchase price.

Date Printed	5/2/07
Date Approved	
Supersedes	6/5/03
Label Changes	IREDD
Filename	9198-153
Label Code	RVired050207