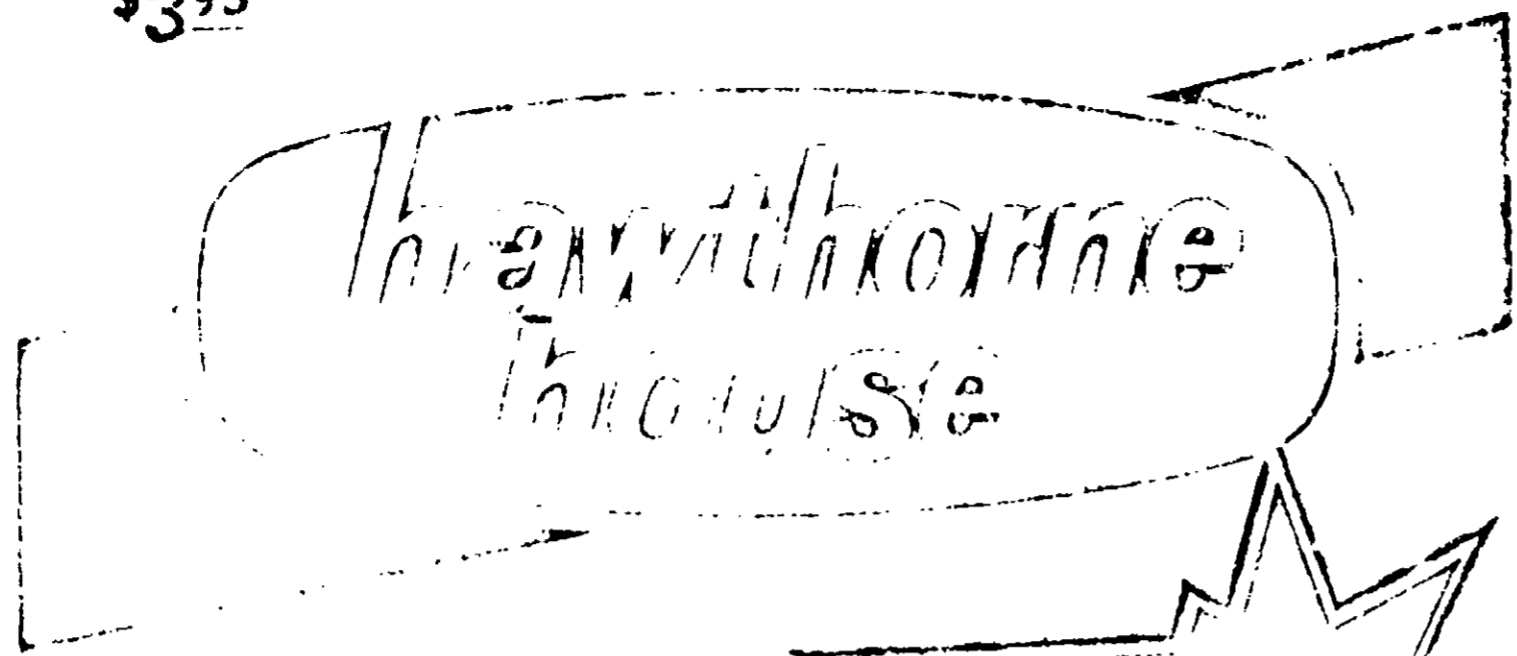
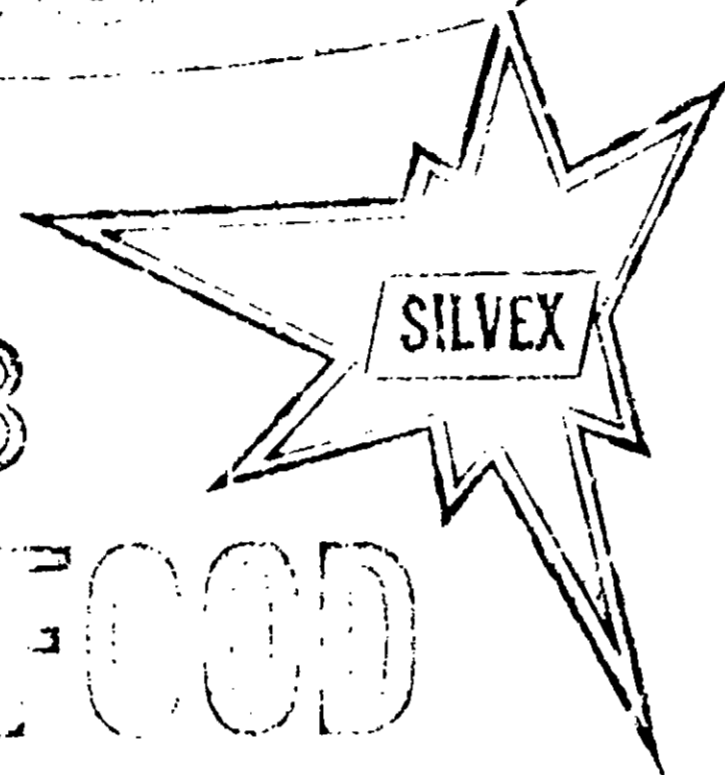


FEEDS
5,000 SQ. FT.
\$3.95

CRIPPLED



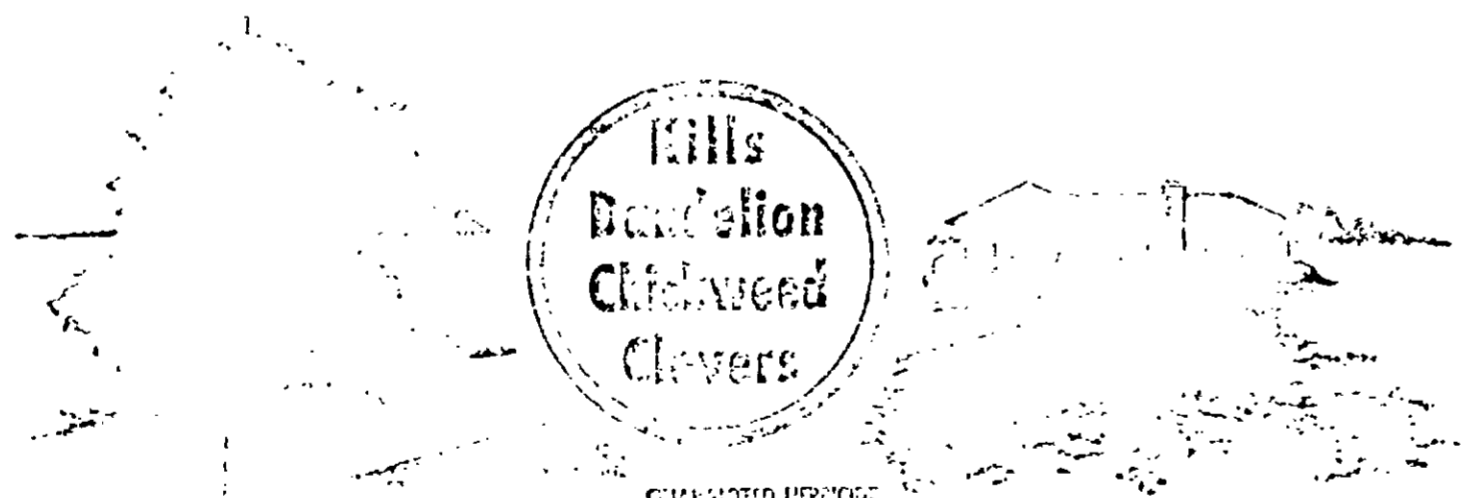
12-4-8



LAWN FOOD
+ WEED KILLER

April 16, 1975

9198-14



Kills
Dandelion
Chickweed
Clevers

CONTAINED HEREIN
Active Ingredients: 0.09%
Inert Ingredients: 99.91%
Total Weight: 100.00%

MINIMUM GUARANTEED FERTILIZER ANALYSIS	
Total Nitrogen (N)	12.0%
Available Phosphoric Acid (P ₂ O ₅)	4.0%
Soluble Potash (K ₂ O)	6.0%

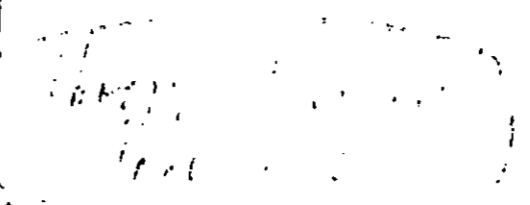
CAUTION
KEEP OUT OF REACH OF CHILDREN
See Back Panel For Additional Cautions

EPA Reg. No. 519-14

ACCEPTED

4-10-73

9198-14



FEEDS 5,000
SQUARE FEET

12-4-8
SILVEX

DUAL PURPOSE LAWN AND FIELD

KILLS - Dandelion, Chickweed, Plantain, ground ivy, spurge and similar broadleaf weeds.

FEEDS - Balanced nutrients for vigorous growth of turf.

SUGGESTED SPREADER SETTINGS
Scott 5 Greenfield 6 1/2 Cyclone 4

Check your spreader for accuracy
FOR BEST RESULTS

- Apply spring or fall when weeds are growing.
- Apply at warm temperature.
- Apply when grass is damp from dew, rain or sprinkling.
- Wait 24 hours to water or mow.
- Feed grass with non-herbicide fertilizer for rest of season.

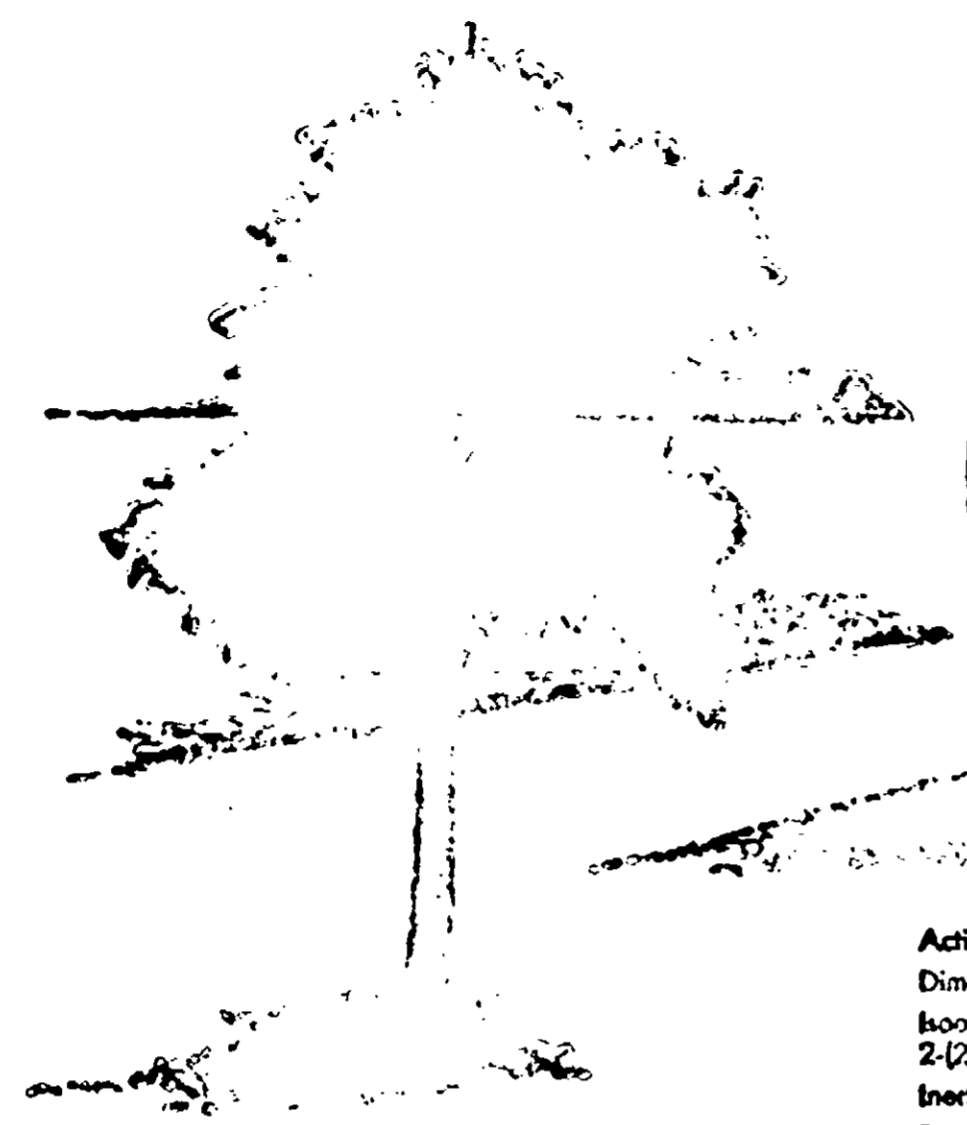
CAUTION

- Harmful if swallowed.
- Avoid Breathing Dust.
- Wash thoroughly after using.
- Avoid contact with skin, eyes or clothing.
- Do not apply to bent grasses, clover, St. Augustine, or Dichondra.
- Do not use on newly seeded lawns.
- Avoid drift of dust or vapors which may injure desirable susceptible plants in immediate vicinity. Do not apply on windy days.
- Do not store near fertilizers, and insecticides, or fungicides.
- This product is toxic to fish. Keep out of lakes, streams or ponds. Do not contaminate water by cleaning of equipment or disposal of wastes. A detailed product care sheet is on file.
- Keep out of reach of children. DO NOT FEED TO ANIMALS.

If not used as directed, enter name of variety, quantity, variety, or height of crop and name of this product on the enclosed label of loss or damage arising from a handling or use of this product.

DISTRIBUTED BY
EPA Reg. No. 519-14

+ WEED KILLER



**Kills
Dandelion
Chickweed
Clovers**



GUARANTEED HERBICIDE

Active Ingredients	
Dimethylamine Salt of 2,4-Dichlorophenoxyacetic Acid*	0.69%
Isooctyl Ester of Silvex**	
2-(2,4,5-Trichlorophenoxy) Propionic Acid	0.66%
Inert Ingredients	98.65%
Equivalent To	
*2,4-Dichlorophenoxyacetic Acid Equivalent	0.57%
**2-(2,4,5-Trichlorophenoxy) Propionic Acid Equivalent	0.45%

MINIMUM GUARANTEED FERTILIZER ANALYSIS	
Total Nitrogen (N)	12.00%
Available Phosphoric Acid (P ₂ O ₅)	4.00%
Soluble Potash (K ₂ O)	8.00%

CAUTION

KEEP OUT OF REACH OF CHILDREN
See Back Panel For Additional Cautions

EPA Reg. No. 9198-14

NET WT. 20 LBS