



**DIRECTIONS:**

**ROACHES:** Use a teaspoon to place small amounts of bait in roach runways such as cabinets, table and cabinet drawers, under stove and refrigerator, in closets, beneath sink and drain boards. Use back of spoon to force bait into cracks and crevices where roaches hide.

**CRICKETS:** Use a teaspoon to place small amounts of bait in places where crickets congregate.

ALWAYS WASH TEASPOON WITH SOAP AND WATER AFTER USING.

**CAUTION:** May be harmful if swallowed, inhaled or absorbed through the skin. Avoid contact with skin, eyes or clothing. Wash thoroughly with soap and water after using. Keep out of reach of children and pets. Do not contaminate food, water or utensils. If swallowed, induce vomiting and call a PHYSICIAN.

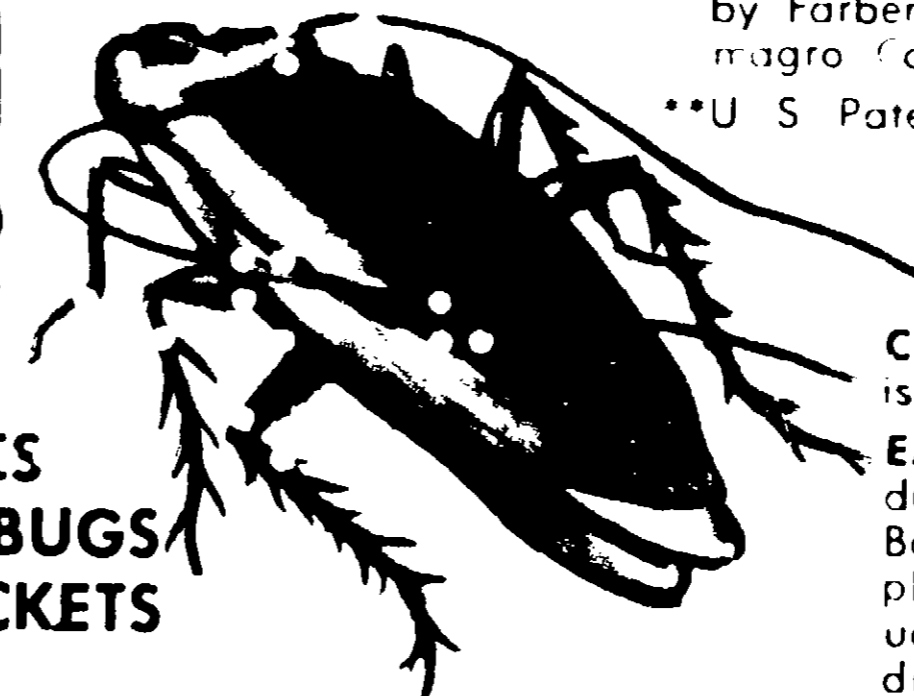
NOTE TO PHYSICIAN: In case of swallowing, Atropine Sulfate is antidotal.

USDA Reg. No. 9172-1

**ZIPP**  
NEW • IMPROVED

**ROACH  
KILLER**

**KILLS  
ROACHES  
WATERBUGS  
& CRICKETS**



**CAUTION** Keep out of reach of children. See side panels for other cautions

**ACTIVE INGREDIENTS:**

Dimethyl(2,2,2-trichloro-1-hydroxyethyl) phosphonate\*\* 00.92%

**INERT INGREDIENTS.** 99.08%  
Total 100.00%

\*Reg. U. S. and Canadian Pat. Offs. by Farbenfabriken Bayer, A. G. Chemagro Corporation licensee

\*\*U. S. Patent No. 2,701,225

**NET WT. 2 OUNCES**

**CLEAN:** ZIPP ROACH KILLER is clean and sanitary to use.

**EASY TO USE:** Nothing to dust, paint, spray or mix. Bait is ready to use. Just place bait where roaches usually run -- they'll eat it and die.

CONSUMER PRODUCTS DIVISION  
SCOTT CHEMICAL COMPANY

1135 Basse Road San Antonio, Texas 78212

**"THEY EAT IT . . . AND DIE"**