

9143-37

[9143-37]

**Directions for Use**

Remove protective cap. Aim spray opening over insect. Push button to spray.

**For houseflies, mosquitoes, and gnats:** Close doors and windows. Point nozzle upward; direct spray mist to all parts of room, especially windows and other light sources which attract these insects. Fill the room with mist, then leave the treated area. Keep room closed for at least 15 minutes. Ventilate the room when treatment is completed.

**Wasps:** Application should be made in late evening when insects are at rest. Spray liberally into hiding and nesting places, contacting as many insects as possible. Repeat as necessary.

**For crawling insects:** Roaches, earwigs, grubs, millipedes, silverfish, and centipedes. Spray thoroughly into hiding places, such as cracks, crevices, under pipes, behind wall pipes and sinks, under refrigerator, baseboards, and storage bins. Spray directly on insect when possible.

**Ants:** Spray trails, nests and points of entry. Spray into white蚁 trails. Repeat as necessary.

**Food Processing:** Foods should be removed or sprayed with insecticide. Insecticide should be sprayed liberally on the ground around the processing area.

**WARRANTY:** This product is warranted to be effective against the insects listed on the label. If it fails to do so, it will be replaced free of charge.

Keep out of reach of children. Do not use in confined spaces.

**Active Ingredients:**

Permethrin	0.5%
Pyrethrin	0.5%
Resmethrin	0.5%
Azinphos methyl	0.5%
Propoxur	0.5%
Phosalone	0.5%

**Inert Ingredients:** 99.5%

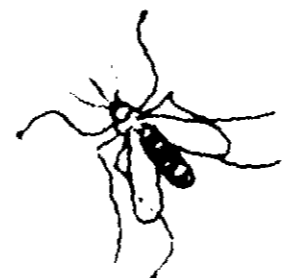
U.S. Patent No. 3,480,000

**CHEMSCOPE CORPORATION**  
1909 Hi-Line Drive  
P.O. Box 10752  
Dallas, Texas

**ACCEPTED**  
Jul 20 1972  
UNDER THE SEAL OF INSPECTION  
FUNGUS  
OR LE  
EMERALD  
ATTACHED

**CHEMSCOPE**

# INSECTICIDE 2500



For use against houseflies, mosquitoes, gnats, wasps, ants, roaches, earwigs, grubs, millipedes, silverfish, and centipedes.

Net Wt 20 oz (1 lb 4 oz)

**CAUTION: KEEP OUT OF REACH OF CHILDREN.**  
CONTENTS UNDER PRESSURE. SEE OTHER  
CAUTIONS ON BACK PANEL

EPA REG NO. 143-37