

**BEST AVAILABLE COPY**

**CHEMSCOPE**

**DIRECTIONS:** Remove protective cap. Hold dispenser upright and press button to release fog. For control of flying and crawling insects listed below in closed rooms, offices, warehouses, barns, and for temporary control in outdoor sheltered areas, patios, and porches apply as follows:

**Flying Insects:** Flies, mosquitoes, wasps, flying moths, gnats: Shut doors and windows and spray up into air with a sweeping motion so to fill the room with spray mists.

Keep room closed for at least fifteen minutes after spraying.

**Crawling Insects:** Roaches, silverfish, waterbugs, crickets: spray hiding places such as baseboards, openings around sinks, drains and pipes. Also secluded places. Spray directly on these insects whenever possible. Repeat as needed. **Spiders and Centipedes:** Spray webs and other places where these pests crawl. Spray directly on as many of these insects as possible. Repeat as needed.

**Flammable!** Contents under pressure. Do not use near fire, sparks, or flame. Do not puncture or incinerate container. Exposure to temperatures above 130°F may cause bursting.

Avoid breathing spray mist or contact with skin.

Do not remain in treated areas and ventilate after treatment. Foods should be removed or covered during treatment. Food processing facility should not be in operation during treatment and all processing surfaces should be covered and then cleaned before reuse.

**Active ingredients:** Pyrethrins 0.15%. Technical Piperonyl Butoxide\* 0.30%. N-Octyl Bicycloheptene Dicarboximide 0.90%

**inert ingredients:** 99.05%

\*Equivalent to .24% (Butylcarbityl) (6-Propylpiperonyl) Ether and .06% of related compounds.



**CHERRY  
fragrance**

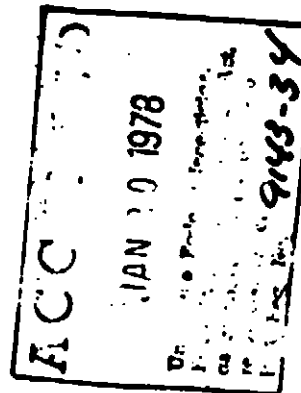
**INSECTICIDE**

**pleasantly scented  
dual synergist**

E.P.A. EST. 9143-TX-1

**NET WT. 17 OZ. (1 LB. 1 OZ.)  
METRIC WT. 482 GRAMS**

E.P.A. REG. NO. 9143-34



**CHEMSCOPE  
CORPORATION**

2500 EAST RANDOLPH HILL ROAD  
AHLSTEDT, TEXAS 75821  
TELEPHONE NO. (409) 281-2227

**CAUTION: KEEP OUT OF REACH OF CHILDREN.  
CONTENTS UNDER PRESSURE. SEE BACK PANEL  
FOR ADDITIONAL PRECAUTIONS.**