

[9143-5]

DIRECTIONS: Remove protective cap. Hold dispenser upright and press button to release mist. Always hold dispenser at least three feet from any object or surface when spraying. When using in enclosed area, do not remain in treated areas and ventilate the area after treatment is completed.

FLYING INSECTS: flies, mosquitoes, wasps, flying moths, gnats: Shut doors and windows and spray up into air with a sweeping motion at the rate of three to five seconds per 1000 cubic feet. Keep room closed for at least fifteen minutes after spraying.

CRAWLING INSECTS: roaches, silverfish, waterbugs, crickets: spray hiding places such as baseboards, openings around sinks, drains and pipes. Also secluded places. Spray directly on these insects whenever possible. Repeat as needed. **SPIDERS AND CENTIPEDES:**

spray webs and other places where these pests crawl. Spray directly on as many of these insects as possible. Repeat as needed. **BEDBUGS:** dismantle bed and spray into all joints. Spray baseboards, moldings, spray mattresses particularly around seams, tufts, and folds. Hold container at least three feet from light colored surfaces. Repeat as needed. **ANTS:** spray directly at insects and ant trails, hills, and other places where ants congregate. **FLEAS:** spray floors, floor coverings, and sleeping quarters of pet. Repeat as often as needed. **DO NOT SPRAY PETS.**

WARNING:

Contents under pressure. Do not puncture. Do not use or store near heat or open flame. Exposure to temperatures above 130° F may cause bursting. Never throw container into fire or incinerator.

CAUTION:

Foods should be removed or covered during treatment. All food processing surfaces should be covered during treatment or thoroughly cleaned before using. When using the product in these areas, apply only when the facility is not in operation.

KEEP OUT OF REACH OF CHILDREN. Avoid breathing spray mist. Do not spray directly on animals or plants. Do not spray directly on plastic, asphalt, tile, or linoleum as ingredients may be harmful to some such surfaces.

Remove pets, birds, and cover fish aquariums before spraying.

ACTIVE INGREDIENTS: Pyrethrins .15%. Technical Piperonyl Butoxide* .30%. N-Octyl Bicycloheptene Dicarboximide .50%. Petroleum Distillate 19.05%.

INERT INGREDIENTS: 80.00%.

*Equivalent to .24% (Butylcarbityl) (6-Propylpiperonyl) Ether and .06% of related compounds.

E.P.A. REG. NO. 9143-5

E.P.A. EST. NO. 9143-TX-1

CHEMSCOPE

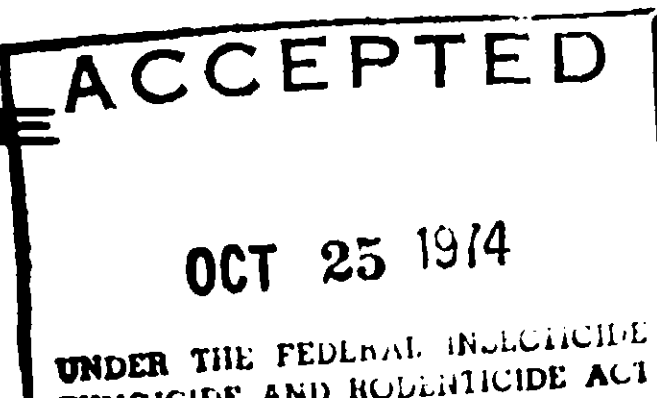
CORPORATION

1909 Hi-Line Drive

P. O. Box 10752

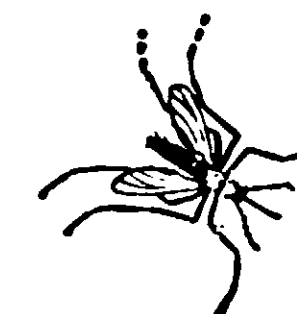
Dallas, Texas

75207



CHEMSCOPE

**AEROSOL
INSECTICIDE
150**



Net Wt. 20 oz. (1 lb. 4 oz.)

**CAUTION: KEEP OUT OF REACH OF CHILDREN.
CONTENTS UNDER PRESSURE. SEE OTHER
CAUTIONS ON BACK PANEL.**