

# FOR ALL WOOD SURFACES

CONTAINS  
PETROLEUM DISTILLATES

If swallowed, do not induce vomiting.  
Call Physician immediately.

## CAUTION! COMBUSTIBLE!

**FIRE:** Avoid exposing the contents of this can or the freshly treated lumber to open flame. Treat in well ventilated areas.

**SKIN:** Those persons with delicate or sensitive skin should wear synthetic rubber gloves during use. Wash promptly after finishing with soap and water.

**BREATHING:** Use a mask when spraying. Do not spray for extended periods in a closed area.

**HAZARDS:** Keep freshly treated articles away from plants, food stuff, and children. When dry and odorless it will not harm plants, animals or humans.

MEETS FEDERAL SPEC. TT W 572

ACTIVE INGREDIENTS	
Penta-Chlorophenol	15%
Tetra-Chlorophenol	15%
Creosote Creosolated Extract	75%
Petroleum Solvent	87.5%
Toluene	90.5%
INERT INGREDIENTS	
	15%
TOTAL	100%

USDA REG. No. 8815-1

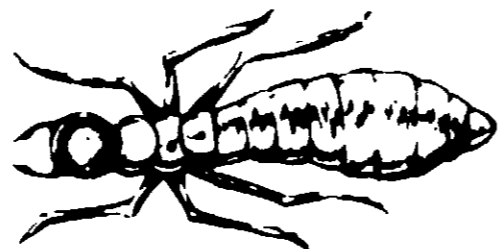
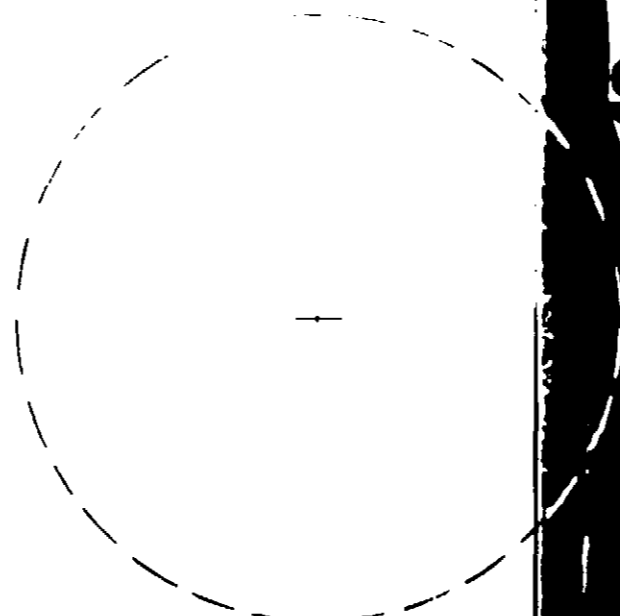
LESSENS WARPING

SLOWS SHRINKING  
AND SWELLING

ELIMINATES DECAY AND ROT  
REDUCES SPLITTING

HALTS MILDEW

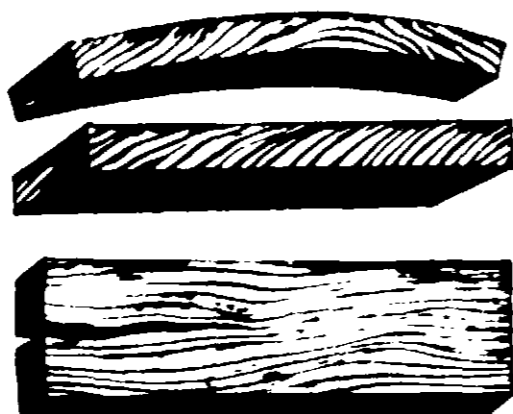
PREVENTS RAISING OF GRAIN  
STOPS STAINING  
REPELS WATER



IT HALTS TERMITES



PREVENTS PAINT BLISTERS



it penetrates



**ACCEPTED**

1/16/69

UNDER THE FEDERAL INSECTICIDE  
FUNGICIDE AND RODENTICIDE ACT  
FOR ECONOMIC POISON REGISTERED  
UNDER NO. 8815-1. SUBJECT  
TO ATTACHED COMMENTS.

8815-1

**STOPS TERMITES**  
**STOPS DECAY**



**CLEAR-WOOD**  
**PRESERVER**  
FOR ALL WOOD SURFACES

**WATERLOX**  
**PREVENTS WOOD**

**DANGER: HARMFUL OR FATAL IF SWALLOWED. KEEP OUT OF REACH OF CHILDREN.**  
See back panel for additional cautions

1 GALLON U.S. MEASURE