

Ms. Martha LaRocco
Safeguard Chemical Corporation
411 Wales Avenue
Bronx, New York 10454

JUN 15 2004

Dear Ms. LaRocco:

Subject: Label Amendment- PR Notices 2001-1 and 2001-6
707 Residual Formula 3 Landlord's Formula Roach and Ant
Killer
EPA Registration Number 8848-76
Your submissions dated January 16, 2004

The amendment referred to above, submitted in connection with registration under FIFRA section 3(c)(7)(a), is acceptable provided that you:

1. Submit and/or cite all data or other material required for registration/reregistration of your product under FIFRA section 3(c)(5) or FIFRA section 4 when the Agency requires all registrants of similar products to submit such data.
2. Make the labeling changes listed below before you release the product for shipment bearing the amended labeling:
 - a) On the front panel delete ~~Hard To Kill Roaches~~.
3. Submit three (3) copies of your final printed labeling before you release the product for shipment.

If these conditions are not complied with, the registration will be subject to cancellation in accordance with FIFRA section 6(e). Your release for shipment of the product constitutes acceptance of these conditions.

A stamped copy of the label is enclosed for your records.

Sincerely,

George T. LaRocca
Product Manager 13
Insecticide Branch
Registration Division (7505C)

Enclosure

ACCEPTED
with COMMENTS
in EPA Letter Dated

JUN 15 2004

Under the Federal Insecticide,
Fungicide, and Rodenticide Act
as amended, for the pesticide
registered under EPA Reg.

8808-76

707

FORMULA 76

* For Residential Use Only

* For Indoor and Outdoor

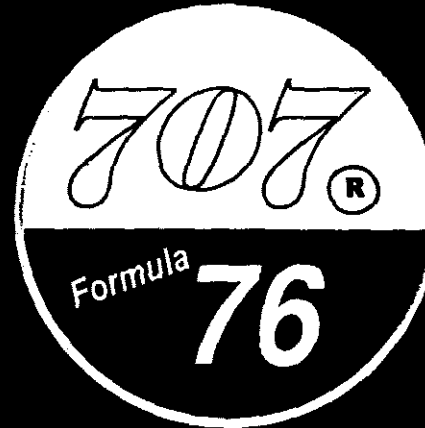
* For Control of Fleas,
Brown Dog Ticks and
Lice on Premises

* Provides 60-day (Two Months)
Control of Cockroaches

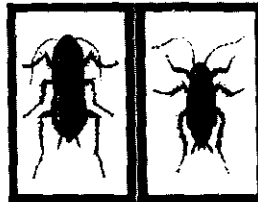
* Provides 60-day (Two-Months)
Control of Fleas

READ ENTIRE LABEL BEFORE USE

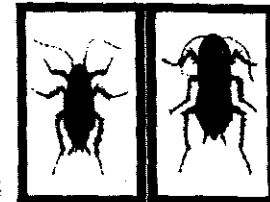
CONDITIONS: The directions for use of this product are believed to be adequate and should be followed carefully. However, it is impossible to eliminate all risks associated with the use of this product. Ineffectiveness or other unintended consequences may result because of such factors as weather conditions, presence of other materials, or the manner of use or application, all of which are beyond the control of Safeguard Chemical Corporation. All such risks shall be assumed by the user or buyer.



**FOR INDOOR AND OUTDOOR USE
KILLS**



**HARD TO KILL
ROACHES**



ACTIVE INGREDIENT:	
*Permethrin	0.50%
OTHER INGREDIENTS	99.50%
TOTAL	100.00%

(3-phenoxyphenyl methyl (+)-cis trans 3-(2,2-dichloroethoxy)
2,2-dimethylcyclopropanecarboxylate. Cis:trans ratio: min. 35%
(+) cis and max. 65% (+) trans.

NET 128 FL. OZ. (ONE GALLON)

**MADE IN
U.S.A.**

**CAUTION: KEEP OUT OF REACH OF CHILDREN
SEE REAR PANEL FOR ADDITIONAL PRECAUTIONS**

READ ENTIRE LABEL BEFORE EACH USE
In case of medical emergencies or health and safety
inquiries or in case of fire, leaking or damaged containers,
information may be obtained by calling 718-585-3170.

707 76

FORMULA



PRECAUTIONARY STATEMENTS
HAZARDS TO HUMANS & DOMESTIC ANIMALS

CAUTION

Wash thoroughly after handling and before smoking or eating

FIRST AID

- IF SWALLOWED:**
- Immediately call a poison control center or doctor.
 - Do not induce vomiting unless told to do so by the poison control center or doctor.
 - Do not give any liquid by mouth to an unconscious person.
- IF IN EYES:**
- Hold eyes open and rinse slowly and gently with water for 15-20 minutes.
 - Remove contact lenses, if present, after the first 5 minutes, then continue rinsing eyes.
 - Call a poison control center or treatment advice.
- IF ON SKIN OR CLOTHING:**
- Take off contaminated clothing.
 - Rinse skin immediately with plenty of water for 15-20 minutes.
 - Call a poison control center or doctor for treatment advice.
 - Move person to fresh air.
- IF INHALED:**
- If person is not breathing, call 911 or an ambulance, then give artificial respiration, preferably by mouth-to-mouth, if possible.
 - Call a poison control center or doctor for further treatment advice.

Obtain product outside - vomiting may cause aspiration pneumonia.
Have this product container or label with you when calling a poison control center or doctor, or going for treatment. You may also contact 1-800-858-7378 for emergency medical treatment information.

ENVIRONMENTAL HAZARDS

This product is toxic to fish. Do not apply to water, to areas where surface water is present or to intertidal areas below the high water mark. Do not contaminate water when disposing of equipment washwaters.

DIRECTIONS FOR USE

It is a violation of Federal law to use this product in a manner inconsistent with its labeling. Avoid contamination of feed and foodstuffs. Remove pets and cover fish aquaria before birds applications. Do not use on humans. Do not allow children or pets to contact treated areas until surfaces are dry. Affix trigger, pump or other type sprayer to container for applications. Do not transfer to another container.

SHAKE WELL BEFORE USING

INDOOR APPLICATION: For spot application only. Do not use as a space spray indoors. Do not apply to classrooms while in use. In the home, all food processing surfaces and utensils should be covered during treatment or thoroughly washed before use. Exposed food/feed should be covered or removed.

SURFACE SPRAYING: For 60-Day (Two Months) control of Cockroaches, Waterbugs, Palmetto Bugs, Scorpions, Millipedes, Centipedes, Sowbugs, Pillbugs, Ants, Silverfish, Firebrats, Spiders, Crickets, Clover Mites, Cheese Mites, Granary Weevils, Rice Weevils, Confused Flour Beetles, Drugstore Beetles, Meal Worms, Grain and Caddisflies: Direct the spray into hiding places, cracks and crevices, and behind shelves and drawers. For silverfish, spray bookcases. For ants, spray trails, nests and points of entry.

TO CONTROL CARPET BEETLES: Spray edges of carpeting and under carpeting and rugs. Make localized application to floor and baseboards. Spray directly into cracks, crevices and infested areas of shelving.
TO CONTROL PLEAS (adult and larvae) AND TICKS, including Ticks which may carry Lyme disease (adults and larvae): Thoroughly spray infested areas, pet beds, nesting quarters, nearby cracks and crevices, along and behind baseboards, moldings, window and door frames, and entire areas of floor and floor covering. Fresh bedding should be placed in animal quarters following treatment. Allow to dry thoroughly before allowing pets to contact treated areas.

TO KILL LICE AND LOUSE EGGS: Spray in an inconspicuous area to test for possible staining or discoloration. Inspect again after drying, then proceed to spray entire area to be treated. Spray from a distance of 8 to 10 inches. Treat only those garments and parts of bedding including mattresses and furniture that cannot be either laundered or dry cleaned. Allow all treated articles to dry thoroughly before use.

OUTDOOR APPLICATION:

TO CONTROL TICKS, INCLUDING TICKS WHICH MAY CARRY LYME DISEASE (PERIMETER TREATMENT): Use 707 Formula 76 Kills Hard-To-Kill Roaches as a residual treatment to control Ticks including the Deer Tick (*Ixodes dammini*), Lone Star Tick (*Amblyomma americanum*), Brown Dog Tick (*Rhipicephalus sanguineus*), American Brown Dog Tick (*Dermacentor variabilis*) and Western Black-legged Tick (*Ixodes pacificus*). For each area listed below, apply until surface is wet (approximately 1 gal/750-1000 ft²). Treat around windows and doors, porches, screens, eaves, patios, garages, under stairways and in crawl spaces where these pests may enter. Treat a band of vegetation and leaf litter 6 to 10 feet wide around the outside of buildings to help control ticks occurring there. To help control ticks in outdoor activity areas, treat a band of vegetation and leaf litter 6-10 feet wide and adjacent to activity areas, especially where dense vegetation occurs.

FOR CONTROL OF ORNAMENTAL GARDEN INSECTS:

NOT FOR USE ON PLANTS GROWN FOR SALE OR OTHER COMMERCIAL RESEARCH PURPOSES. NOT FOR USE IN COMMERCIAL GREENHOUSE, NURSERIES, ON SOD FARMS OR GRASS GROWN FOR SEED.

For use on roses, dahlias, asters and other ornamentals to kill Japanese beetles hit by spray as well as Whiteflies, Aphids, Exposed Thrips, Spiders, Red Mites and Leafminers.

May be used on plants as a multi-purpose spray in small gardens and for spot treatments of incipient insect infestations to prevent spreading in large garden areas. May also be used on other plants such as African violets, asters, azaleas, begonias, camellias, carnations, chrysanthemums, dahlias, delphiniums, dogwoods, English Ivy, Eunonymus, fuchsia, geraniums, crassula, grape vines, Kenia palms, laurels, marigolds, rhododendrons, roses, rubber plants, snapdragons, stocks, wandering Jews and zinnias. When spraying plants, do not operate closer than 18 inches. Use sweeping motion. Be cautious about wetting tender foliage, young plants and new growth. Do not spray plants when temperatures exceed 90 degrees F. Contact insects directly whenever possible.

STORAGE & DISPOSAL

Do not contaminate water, food or feed by storage or disposal.

Container Disposal

If empty: Do not reuse this container. Place in trash or offer for recycling if available.

If partly filled: Call your local solid waste agency or 1-800-CLEANUP for disposal instructions. Never place unused product down any indoor or outdoor drain.

EPA NO. 8348-76

EPA EST. NO. 8348-NY-1

The 707 Company Div. of Safeguard Chemical Corp.
Bronx, NY 10454

3/3