



OFFICE OF CHEMICAL SAFETY AND POLLUTION PREVENTION

WASHINGTON, D.C. 20460

June 06, 2025

SENT BY EMAIL

Angela Coco
acoco@herconenviron.com
ABERDEEN ROAD COMPANY

Subject: Labeling Notification per Pesticide Registration Notice (PRN) 98-10 - Revision to EPA establishment information
Product Name: LURE N KILL JAPANESE BEETLE
Admin Number: 8730-57
EPA Receipt Date: 05/28/2025
Action Case Number: 00658773

Dear Angela Coco:

The U.S. Environmental Protection Agency is in receipt of your application for notification under Pesticide Registration Notice 98-10 for the above referenced product. The EPA has conducted a review of this request for its applicability under PRN 98-10 and finds that the action requested falls within the scope of PRN 98-10.

The labeling submitted with this application has been stamped "Notification" and will be placed in our records.

Should you wish to add/retain a reference to your company's website on your label, then please be aware that the website becomes labeling under the Federal Insecticide, Fungicide, and Rodenticide Act and is subject to review by the EPA. If the website is false or misleading, the product will be considered to be misbranded and sale or distribution of the product is unlawful under FIFRA section 12(a)(1)(E). 40 CFR § 156.10(a)(5) lists examples of statements the EPA may consider false or misleading. In addition, regardless of whether a website is referenced on your product's label, claims made on the website may not substantially differ from those claims approved through the registration process. Therefore, should the EPA find or if it is brought to our attention that a website contains statements or claims substantially differing from statements or claims made in connection with obtaining a FIFRA section 3 registration, the website will be referred to the EPA's Office of Enforcement and Compliance Assurance.

If you have questions, please contact Shanda Bennett via email at bennett.shanda@epa.gov.

Sincerely,

James Parker

James Parker, Team Leader
BPB, BPPD
Office of Pesticide Programs

HERCON® LURE N KILL® JAPANESE BEETLE

Master Label Includes:

- Main Label
- Optional Label Claims
- Label text specific to supplemental distributors

HERCON® LURE N KILL® JAPANESE BEETLE

Alternative Brand Names (henceforth ABN):

LURE N KILL ® JAPANESE BEETLE
JAPANESE BEETLE DUAL LURE

EPA Reg. No. 8730-57

Made in the USA by:

Aberdeen Road Company d/b/a HERCON ENVIRONMENTAL

P.O. Box 435 Emigsville, PA 17318-0435

EPA Est. No. 8730-PA-01

Questions? 866-4-HERCON

®"HERCON" is a registered trademark of Aberdeen Road Company, Emigsville, PA.

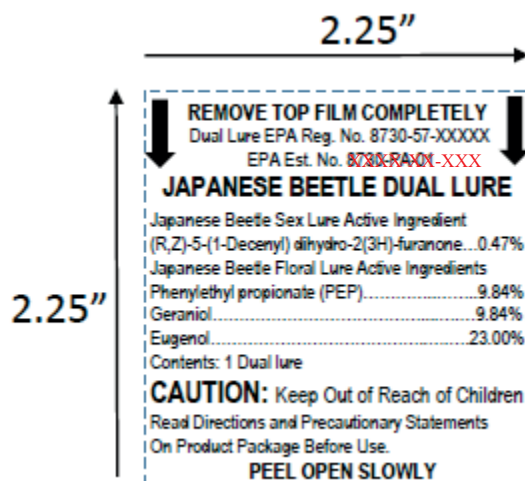
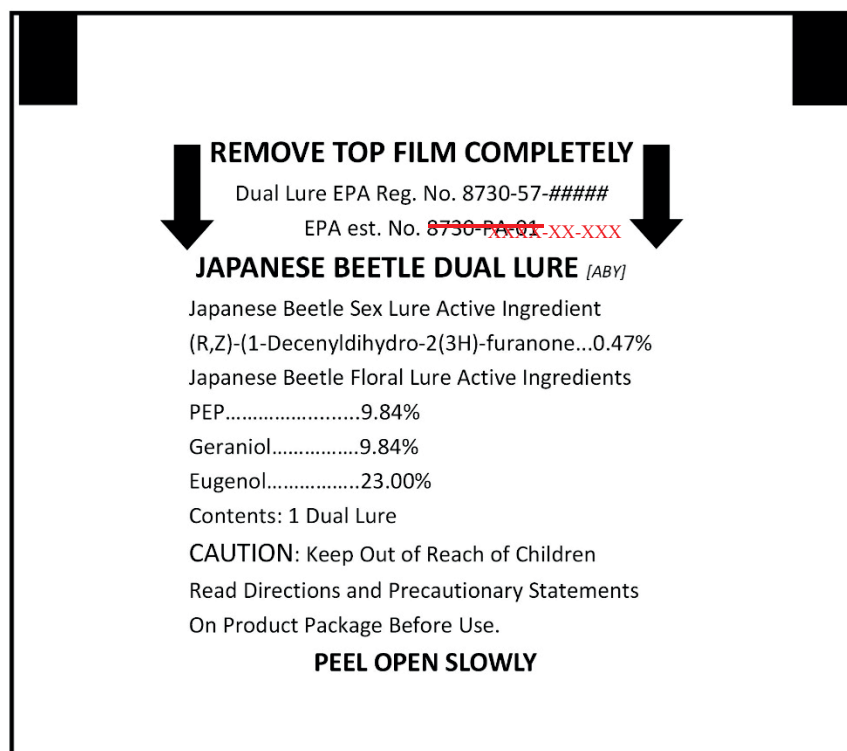
NOTIFICATION

8730-57

The applicant has certified that no changes, other than those reported to the Agency have been made to the labeling. The Agency acknowledges this notification by letter dated:

06/06/2025

{Bait pack sample wrapper templates. Not to scale. NOTE: Product sold in additional packaging container with complete market label. **EPA distributor number and EPA est. No. may vary.**}



Main Label

HERCON® LURE N KILL® JAPANESE BEETLE

[refill]/[ABN]

JAPANESE BEETLE SEX LURE

ACTIVE INGREDIENT:	BY WT.
(R,Z)-5-(1-Decenyl) dihydro-2(3H)-furanone.....	00.47% [†]
OTHER INGREDIENTS:.....	99.53%
TOTAL:.....	100.00%

[†] Equivalent to 1 mg japonilure pheromone A.I./dispenser Net
Weight 0.008 oz (0.23 g)/Sex Lure.

JAPANESE BEETLE FLORAL (FOOD) LURE

ACTIVE INGREDIENT:	BY WT.
Phenylethyl propionate (PEP).....	9.84%
Geraniol.....	9.84%
Eugenol.....	23.00%
OTHER INGREDIENTS:.....	57.32%
TOTAL:.....	100.00%

Net Weight: 0.26 oz (7.4 g)/Floral Lure

CONTENTS: One Sex Lure/Floral Lure Bait Pack

NET WEIGHT: 0.27 oz (7.63 g)/Bait Pack

KEEP OUT OF REACH OF CHILDREN

CAUTION

(See other panel for additional precautionary statements)

[Master Label- (main label) Back Panel]

This LURE N KILL® Japanese Beetle Bait Pack consists of a dual sex lure and floral (food) lure system, which attracts two to five times more Japanese beetles than traps with only a single lure. The lures combine to draw male and female Japanese beetles into a trap...and away from valuable ornamentals, fruit trees, vegetables, flowers and shrubs.

This product contains no killing agent to damage the environment and will not harm beneficial insects or attract nuisance animals. Because of the unique controlled release system, the japonilure sex pheromone and floral attractant bait pack is designed to last for the entire trapping season. This LURE N KILL® Japanese Beetle Trap Bait pack was developed for the LURE N KILL® Japanese Beetle Trap but may also be used with other brands of Japanese Beetle traps.

PRECAUTIONARY STATEMENTS

Hazards to Humans and Domestic Animals

CAUTION: Harmful if absorbed through skin. Avoid contact with skin, eyes and clothing. Causes moderate eye irritation. Harmful if swallowed. Wash hands thoroughly with soap and water after handling and before eating, drinking, chewing gum, using tobacco or using the toilet.

FIRST AID

If on skin or clothing:
<ul style="list-style-type: none">- Take off contaminated clothing.- Rinse skin immediately with plenty of water for 15-20 minutes.- Call a poison control center or doctor for treatment advice.
If in eyes:
<ul style="list-style-type: none">- Hold eye open and rinse slowly and gently with water for 15-20 minutes. Remove contact lenses, if present, after the first 5 minutes, then continue rinsing eye.- Call a poison control center or doctor for treatment advice.
If Swallowed:
<ul style="list-style-type: none">- Call poison control center or doctor immediately for treatment advice.- Have person sip a glass of water if able to swallow*- Do not induce vomiting unless told to do so by the poison control center or doctor.- Do not give anything by mouth to an unconscious person
Have the product container or label with you when calling a poison control center or doctor, or going for treatment. Contact 1-800-858-7378 for emergency medical treatment advice.

DIRECTIONS FOR USE:

It is a violation of Federal law to use this product in a manner inconsistent with its labeling.

Do not open protective pouch until ready to use. Remove the bait from its protective package. Peel the protective cover (marked peel) from the LURE N KILL® Japanese Beetle Sex Lure/Floral Lure Bait Pack.

Remove the paper from the adhesive strip on the back of the Sex Lure/Floral Lure Bait Pack and attach the bait onto the trap vane.

Do not attempt to peel apart the bait pack. Best results are obtained by attaching the bait pack to the lower third of the trap vane.

REPLACEMENT:

Under ordinary weather conditions, LURE N KILL® Japanese Beetle Sex Lure/Floral Lure Bait Pack should be effective for about 12 weeks.

STORAGE AND DISPOSAL:

Do not contaminate water, food, or feed by storage and disposal.

PESTICIDE STORAGE: Store unopened sex lure/floral lure bait pack in a cool dry place or refrigerator until ready for use.

PESTICIDE DISPOSAL: Wastes resulting from the use of this product must be disposed of on site or at an approved waste disposal facility.

CONTAINER DISPOSAL: Non-refillable container. Do not reuse or refill this container. Wrap container and put in trash or offer for recycling

NOTICE: HERCON ENVIRONMENTAL makes no warranty, express or implied, for any particular purposes concerning the product, other than those which are contained on this label. HERCON ENVIRONMENTAL will not accept liability for damage or injury resulting from misuse.

Made in the USA by ABERDEEN
ROAD COMPANY
d/b/a HERCON ENVIRONMENTAL
Emigsville, PA 17318-0467

EPA Reg. No 8730-57
EPA Est. No. 8730-PA-001

HERCON® and LURE N KILL® are registered trademarks of Aberdeen Road Company.

[Optional Marketing Claims]

Bait Pack Containing Long-Lasting Sex Lure and Floral (Food) Lure.
For Use in LURE N KILL® and Other Japanese Beetle Traps.
Protects Your Yard!
Lasts The Entire Beetle Season!
Easy to use.
No sprays.
No mess.

[Additional Optional Information]

[Subregistrant] guarantee: If for any reason you, the consumer, are not satisfied with this product, mail us your original proof of purchase to obtain a full refund of your purchase price.

Questions &/or Comments Call 1-800-xxx-xxxx www.subregistrantname.com

Visit www.subregistrant.com to buy replacement lures for this trap. Replacement lures for this trap are available at www.subregistrant.com. To buy replacement lures for this trap, visit www.subregistrant.com.

Reuse this trap as many times as desired. Visit www.subregistrant.com for replacement lures.

[Insert subregistrant name] is committed to reducing waste and being a good environmental steward.

Visit www.subregistrant.com to buy replacement lures for this trap.

[Insert subregistrant name] is committed to waste reduction and environmental stewardship. Visit www.subregistrant.com to buy replacement lures for this trap. [Lure/Attractant] Refill(s) Available [Additional] [Disposable] [Liner] Bags Available Reusable Trap with [Lure/Attractant] Refill [Additional] Lure/Attractant Refill(s) & Disposable [Liner] Bags Available Reuse Trap as Many Times as Desired. [Additional] Lure/Attractant Refill(s) & Disposable/Disposal [Liner] Bags Are Available for Purchase.

Label text specific to Supplemental Distributor EPA Company No. 42697, Woodstream Corporation. Trap packaged with bait pack or bait pack refill; Safer® Brand Japanese Beetle Trap [Refill]

{Note to Reviewer: This sub-registrant may package the Japanese beetle bait pack with the Safer® Brand Japanese Beetle Trap in the same carton or as a separate refill pack. The Japanese beetle bait pack serves as an attractant for the trap. The following label represents text that may appear on the outer carton label or label insert with a trap. Main carton/package may present the label information in multiple languages}

[Packaging Front Panel]

[SAFER® BRAND]

[THE] JAPANESE BEETLE TRAP [REFILL]

JAPANESE BEETLE FLORAL (FOOD) LURE

ACTIVE INGREDIENT	BY WT.
Phenylethyl propionate (PEP).....	9.84%
Geraniol.....	9.84%
Eugenol.....	23.00%
OTHER INGREDIENTS:.....	<u>57.32%</u>
TOTAL:.....	100.00%

Net Weight: 0.26 oz (7.4 g)/Floral Lure

JAPANESE BEETLE SEX LURE

ACTIVE INGREDIENT	BY WT.
(R,Z)-5-(1-Decenyl) dihydro-2(3H)-furanone.....	00.47%†
OTHER INGREDIENTS:.....	<u>99.53%</u>
TOTAL:.....	100.00%

† Equivalent to 1 mg japonilure pheromone A.I./dispenser
Net Weight 0.008 oz (0.23 g)/Sex Lure.

NET WEIGHT: 0.27 oz (7.63 g)/Bait Pack

KEEP OUT OF REACH OF CHILDREN

CAUTION

(SEE OTHER PANEL FOR ADDITIONAL PRECAUTIONARY STATEMENTS)

Distributed By:

[Safer® Inc., (A wholly-owned subsidiary of Woodstream Corporation)]

[69 North Locust Street, Lititz, PA 17543 (800) 800-1819]

[Model No. ~~XXXXXX70102~~] EPA Reg. No. 8730-57-[42697] [EPA est. No. 084829-PA-001] [EPA est. No. 089287-KS-002][EPA est. No. XXXXXX-XX-XXX]

[www.saferbrand.com][Made in USA]

[RitePack 502 S 15th Street Elwood KS 66024]

[back panel]

DIRECTIONS FOR USE:

It is a violation of Federal law to use this product in a manner inconsistent with its labeling.

TRAP ASSEMBLY.

1. Slide vanes together at the slots to form a cross.
2. Attach the twist tie by inserting about 4" through the holes in the top vane assembly as shown in the diagram and twist to secure the trap.
3. Attach one of the disposable collection bags to the vane assembly by gently sliding the holes in the bag over the cutout hooks on the lower end of the trap vanes.

BAIT PLACEMENT

4. Remove the bait pack from its protective packaging. Peel the protective cover from the Safer Brand Japanese Beetle Trap Bait Pack.
5. Peel the paper from the adhesive strip on the back of the sex/floral lure bait pack and attach the bait onto the trap vane. Best results are obtained by attaching the bait pack to the lower third of the trap vane.

**TRAP PLACEMENT,
APPLICATION RATE AND USE:**

1. Place traps as beetles emerge and are noticed.
2. Place traps on the generally upwind side of vegetable gardens, flower gardens, ornamental shrub plantings and other outside landscape planting attacked by the beetles. Apply traps at the rate of one trap per 50 linear feet along two sides of plant perimeters. For example, if the site is 1-50 linear feet, place only one trap on each of the two sides. If the site is 51-100 linear feet, place two traps on each of the two sides, etc. DO NOT enclose the treated site with traps.
3. Hang traps from any suitable post or stand in sunny areas 3 to 5 feet above the ground.
4. Place traps at least 10 feet away from the plantings as they may attract beetles to foliage if placed closer.
5. Replace bags when full. If trap catches decline and beetles are still present, replace bait pack. Remove traps from site when beetles are no longer present.

STORAGE AND DISPOSAL

Do not contaminate water, food or feed by storage and disposal.

PESTICIDE STORAGE: Store unopened sex lure/floral lure bait pack in a cool dry place or refrigerate until ready to use.

PESTICIDE DISPOSAL: Wastes resulting from the use of this product must be disposed of on site or at an approved waste disposal facility.

CONTAINER DISPOSAL: Non-refillable container. Do not reuse or refill this container. Wrap container and put in trash or offer for recycling if available.

PRECAUTIONARY STATEMENTS

Hazards to Humans and Domestic Animals

CAUTION: Do not open protective pouch until ready to use. Harmful if absorbed through skin. Avoid contact with skin, eyes and clothing. Causes moderate eye irritation. Harmful if swallowed. Wash hands thoroughly with soap and water after handling and before eating, drinking, chewing gum, using tobacco or using the toilet.

FIRST AID

If on Skin or Clothing: • Take off contaminated clothing. • Rinse skin immediately with plenty of water for 15-20 minutes. • Call a poison control center or doctor for treatment advice.

If in Eyes: • Hold eye open and rinse slowly and gently with water for 15-20 minutes. • Remove contact lenses, if present, after the first 5 minutes, then continue rinsing eye. • Call a poison control center or doctor for treatment advice.

If Swallowed: • Call the poison control center or doctor immediately for treatment advice. • Have the person sip a glass of water if able to swallow. • Do not induce vomiting unless told to do so by the poison control center or doctor. • Do not give anything by mouth to an unconscious person.

Have the product container or label with you when calling a poison control center or doctor or going for treatment. Contact 1-800-858-7378 for emergency medical treatment advice.

{Additional languages may be included}

[**NOTICE:** Safer® Brand makes no warranty, express or implied, for any particular purposes concerning the product, other than those which are contained on this label. Safer® Brand will not accept liability for damage or injury resulting from misuse.]

[UPC Barcode]

[*Optional Marketing Claims*]

Jumbo size.

Easy to use.

Protects your yard.

No sprays, no mess.

Lasts the entire beetle season

Look for other Safer® Brand products at www.saferbrand.com

[*Additional optional text*]

Questions &/or Comments Call 1-800-xxx-xxxx www.subregistrantname.com

Visit www.subregistrant.com to buy replacement lures for this trap. Replacement lures for this trap are available at www.subregistrant.com. To buy replacement lures for this trap, visit www.subregistrant.com.

Reuse this trap as many times as desired. Visit www.subregistrant.com for replacement lures.

[Insert subregistrant name] is committed to reducing waste and being a good environmental steward.

Visit www.subregistrant.com to buy replacement lures for this trap.

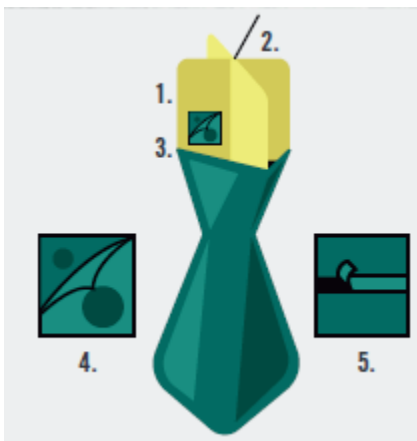
[Insert subregistrant name] is committed to waste reduction and environmental stewardship. Visit www.subregistrant.com to buy replacement lures for this trap. [Lure/Attractant] Refill(s) Available

[Additional] [Disposable] [Liner] Bags Available Reusable Trap with [Lure/Attractant] Refill

[Additional] Lure/Attractant Refill(s) & Disposable [Liner] Bags Available Reuse Trap as Many Times as Desired. [Additional] Lure/Attractant Refill(s) & Disposable/Disposal [Liner] Bags Are Available for Purchase.

[*Optional images*]

{Color and style may vary}



Label text specific to Supplemental Distributor EPA Company No. 42697, Woodstream Corporation. Package/container with bait pack refill; Safer® Brand Japanese Beetle Bait

{Note to Reviewer: This sub-registrant may package the Japanese beetle bait pack with the Safer® Brand Japanese Beetle Trap in the same carton or as a separate refill pack. The Japanese beetle bait pack serves as an attractant for the trap. The following label represents text that may appear on the outer carton label or label insert with a trap. Main carton/package may present the label information in multiple languages}

[Packaging Front Panel]

[SAFER® BRAND]

[THE] JAPANESE BEETLE BAIT [REFILL]

JAPANESE BEETLE SEX LURE

ACTIVE INGREDIENT	BY WT.
(R,Z)-5-(1-Decenyl) dihydro-2(3H)-furanone.....	00.47%†
OTHER INGREDIENTS:.....	99.53%
TOTAL:.....	100.00%

† Equivalent to 1 mg japonilure pheromone A.I./dispenser

Net Weight 0.008 oz (0.23 g)/Sex Lure.

JAPANESE BEETLE FLORAL (FOOD) LURE

ACTIVE INGREDIENT	BY WT.
Phenylethyl propionate (PEP).....	9.84%
Geraniol.....	9.84%
Eugenol.....	23.00%
OTHER INGREDIENTS:.....	57.32%
TOTAL:.....	100.00%

Net Weight: 0.26 oz (7.4 g)/Floral Lure

KEEP OUT OF REACH OF CHILDREN

CAUTION

(SEE OTHER PANEL FOR ADDITIONAL PRECAUTIONARY STATEMENTS)

NET WEIGHT: 0.27 oz (7.63 g)/Bait Pack

CONTENTS: One sex lure/floral lure bait pack

[www.saferbrand.com]

[back panel]

THE JAPANESE BEETLE BAIT

PRECAUTIONARY STATEMENTS HAZARDS TO HUMANS AND DOMESTIC ANIMALS

CAUTION: Do not open protective pouch until ready to use. Harmful if absorbed through skin. Avoid contact with skin, eyes and clothing. Causes moderate eye irritation. Harmful if swallowed. Wash hands thoroughly with soap and water after handling and before eating, drinking, chewing gum, using tobacco or using the toilet.

FIRST AID

If on Skin or Clothing: Take off contaminated clothing. Rinse skin immediately with plenty of water for 15-20 minutes. Call a poison control center or doctor for treatment advice.

If in Eyes: Hold eye open and rinse slowly and gently with water for 15-20 minutes. Remove

contact lenses, if present, after the first 5 minutes, then continue rinsing eye. Call a poison control center or doctor for treatment advice.

If Swallowed: Call the poison control center or doctor immediately for treatment advice. Have the person sip a glass of water if able to swallow. Do not induce vomiting unless told to do so by the poison control center or doctor. Do not give anything by mouth to an unconscious person.

Have the product container or label with you when calling a poison control center or doctor or going for treatment. Contact 1-800-858-7378 for emergency medical treatment advice.

DIRECTIONS FOR USE:

It is a violation of Federal law to use this product in a manner inconsistent with its labeling.

Do not open protective pouch until ready to use. Remove the bait from its protective package. Peel the protective cover from the Safer® Brand Japanese Beetle Bait Pack. Remove the paper from the adhesive strip on the back of the bait pack and attach the bait onto the trap vane. **Do not attempt to peel apart the bait pack.** Best results are obtained by attaching the bait pack to the lower third of the trap vane.

REPLACEMENT: Under ordinary weather conditions, Safer® Brand Japanese Beetle Bait Pack should be effective for about 12 weeks.

STORAGE AND DISPOSAL

Do not contaminate water, food or feed by storage and disposal. **Pesticide Storage:** Store unopened sex lure/floral lure bait pack in a cool dry place or refrigerate until ready to use. **Pesticide Disposal:** Wastes resulting from the use of this product must be disposed of on site or at an approved waste disposal facility. **Container Disposal:** Non-refillable container. Do not reuse or refill this container. Wrap container and put in trash or offer for recycling if available.

Model #70006-0319

Distributed By:

[Safer® Inc., (A wholly-owned subsidiary of Woodstream Corporation)]

[69 North Locust Street, Lititz, PA 17543 (800) 800-1819]

[Model No. XXXXX] EPA Reg. No. 8730-57-[42697] [EPA est. No. 084829-PA-001] [EPA est. No. 089287-KS-002] [EPA est. No. XXXXXX-XX-XXX]

[www.saferbrand.com]

[RitePack 502 S 15th Street Elwood KS 66024]

Made in USA

[UPC Barcode]

[*Optional Marketing Claims*]

Jumbo size.

Easy to use.

Protects your yard.

No sprays, no mess.

Lasts the entire beetle season

Look for other Safer® Brand products at www.saferbrand.com

[Additional optional text]

Questions &/or Comments Call 1-800-xxx-xxxx www.subregistrantname.com

Visit www.subregistrant.com to buy replacement lures for this trap. Replacement lures for this trap are available at www.subregistrant.com. To buy replacement lures for this trap, visit www.subregistrant.com.

Reuse this trap as many times as desired. Visit www.subregistrant.com for replacement lures.

[Insert subregistrant name] is committed to reducing waste and being a good environmental steward.

Visit www.subregistrant.com to buy replacement lures for this trap.

[Insert subregistrant name] is committed to waste reduction and environmental stewardship. Visit www.subregistrant.com to buy replacement lures for this trap. [Lure/Attractant] Refill(s) Available

[Additional] [Disposable] [Liner] Bags Available Reusable Trap with [Lure/Attractant] Refill

[Additional] Lure/Attractant Refill(s) & Disposable [Liner] Bags Available Reuse Trap as Many Times as Desired. [Additional] Lure/Attractant Refill(s) & Disposable/Disposal [Liner] Bags Are Available for Purchase.

Label text specific to Supplemental Distributor EPA Company No. 91557, AP&G Co.
Trap packaged with bait pack or bait pack refill; Catchmaster Japanese Beetle Trap Refill

{Note to Reviewer: This is for the sub-registrant's refill pack. The following label represents text that may appear on the outer carton label or label insert. Main carton/package may present the label information in multiple languages}

[Front Panel]

[CATCHMASTER®/LURE N KILL®] JAPANESE BEETLE TRAP REFILL

[ABN]

JAPANESE BEETLE FLORAL (FOOD) LURE

ACTIVE INGREDIENT:	BY WT.
Phenylethyl propionate (PEP).....	9.84%
Geraniol.....	9.84%
Eugenol.....	23.00%
OTHER INGREDIENTS:.....	<u>57.32%</u>
TOTAL:.....	100.00%

Net Weight: 0.26 oz (7.4 g)/Floral Lure

JAPANESE BEETLE SEX LURE

ACTIVE INGREDIENT:	BY WT
(R,Z)-5-(1-Decenyl) dihydro-2(3H)-furanone.....	00.47% [†]
OTHER INGREDIENTS:.....	<u>99.53%</u>
TOTAL:.....	100.00%

[†] Equivalent to 1 mg japonilure pheromone A.I./dispenser

Net Weight 0.008 oz (0.23 g)/Sex Lure

CONTENTS: Two Sex Lure/Floral Lure Bait Packs

NET WEIGHT: 0.27 oz (7.63 g)/Bait Pack

[NOTICE: AP&G Co. makes no warranty, express or implied, for any particular purposes concerning the product, other than those which are contained on this label. AP&G Co. will not accept liability for damage or injury resulting from misuse.]

This Japanese Beetle Bait Pack consists of a dual sex lure and floral (food) lure system, which attracts two to five times more Japanese beetles than traps with only a single lure. The lures combine to draw male and female Japanese beetles into a trap...and away from valuable ornamentals, fruit trees, vegetables, flowers and shrubs. This product contains no killing agent to damage the environment and will not harm beneficial insects or attract nuisance animals. Because of the unique controlled release system, the japonilure sex pheromone and floral attractant bait pack is designed to last for the entire trapping season.

KEEP OUT OF REACH OF CHILDREN CAUTION

See other panel for additional precautionary statements

[Side Panel]

PACKAGE CONTAINS:

2 Bags

2 Bait Packs

[Back Panel]

DIRECTIONS FOR USE:

It is a violation of Federal law to use this product in a manner inconsistent with its labeling.

Do not open protective pouch until ready to use. Remove the bait from its protective package. Peel the protective cover (marked peel) from the Catchmaster® Japanese Beetle Trap Refill sex lure/floral lure bait pack. Remove the paper from the adhesive strip on the back of the sex lure/floral lure bait pack and attach the bait onto the trap vane.

Do not attempt to peel apart the bait pack. Best results are obtained by attaching the bait pack to the lower third of the trap vane.

REPLACEMENT:

Under ordinary weather conditions, Catchmaster® Japanese Beetle Trap Refill sex lure/floral lure bait pack should be effective for about 12 weeks.

STORAGE AND DISPOSAL:

Do not contaminate water, food, or feed by storage and disposal.

PESTICIDE STORAGE: Store unopened sex lure/floral lure bait pack in a cool dry place or refrigerate until ready for use.

PESTICIDE DISPOSAL: Wastes resulting from the use of this product must be disposed of on site or at an approved waste disposal facility.

CONTAINER DISPOSAL: Non-refillable container. Do not reuse or refill this container. Wrap container and put in trash or offer for recycling

PRECAUTIONARY STATEMENTS

Hazards to Humans and Domestic Animals

CAUTION: [Do not open protective pouch until ready to use.] Harmful if absorbed through skin. Avoid contact with skin, eyes and clothing. Causes moderate eye irritation. Harmful if swallowed. Wash hands thoroughly with soap and water after handling and before eating, drinking, chewing gum, using tobacco or using the toilet

FIRST AID

If on skin or clothing:

- Take off contaminated clothing.
- Rinse skin immediately with plenty of water for 15-20 minutes.
- Call a poison control center or doctor for treatment advice.

If in eyes:

- Hold eye open and rinse slowly and gently with water for 15-20 minutes. Remove contact lenses, if present, after the first 5 minutes, then continue rinsing eye.
- Call a poison control center or doctor for treatment advice.

If Swallowed:

- Call poison control center or doctor immediately for treatment advice.
- Have person sip a glass of water if able to swallow*
- Do not induce vomiting unless told to do so by the poison control center or doctor.
- Do not give anything by mouth to an unconscious person

Have the product container or label with you when calling a poison control center or doctor, or going for treatment. Contact **1-800-858-7378** for emergency medical treatment advice.

{label may include directions in additional languages}

CATCHMASTER® is a trademark of:

AP&G Co., Inc.
75 East 2nd Street,
Bayonne, NJ 07002

EPA Reg. No. 8730-57-91557
EPA Est. No. 91557-NJ-1

[UPC BARCODE]

[Possible Images]



[*Optional Marketing Claims*]

Bait Pack Containing Long-Lasting Sex Lure and Floral (Food) Lure.
For Use in LURE N KILL® and Other Japanese Beetle Traps.
Protects Your Yard!
Lasts The Entire Beetle Season!
Easy to use.
No sprays.
No mess.
For use in [CATCHMASTER®] JAPANESE BEETLE TRAP

[*Additional optional text*]

Questions &/or Comments Call 1-800-xxx-xxxx www.subregistrantname.com

Visit www.subregistrant.com to buy replacement lures for this trap. Replacement lures for this trap are available at www.subregistrant.com. To buy replacement lures for this trap, visit www.subregistrant.com.

Reuse this trap as many times as desired. Visit www.subregistrant.com for replacement lures.

[Insert subregistrant name] is committed to reducing waste and being a good environmental steward.

Visit www.subregistrant.com to buy replacement lures for this trap.

[Insert subregistrant name] is committed to waste reduction and environmental stewardship. Visit

www.subregistrant.com to buy replacement lures for this trap. [Lure/Attractant] Refill(s) Available

[Additional] [Disposable] [Liner] Bags Available Reusable Trap with [Lure/Attractant] Refill

[Additional] Lure/Attractant Refill(s) & Disposable [Liner] Bags Available Reuse Trap as Many Times as Desired. [Additional] Lure/Attractant Refill(s) & Disposable/Disposal [Liner] Bags Are Available for Purchase.

Label text specific to Supplemental Distributor EPA Company No. 91557, AP&G Co.
Trap packaged with bait pack or bait pack refill; Catchmaster Japanese Beetle Trap

{Note to Reviewer: This sub-registrant may package the Japanese beetle bait pack with the Catchmaster® Japanese beetle trap in the same carton or as a refill pack. The Japanese beetle bait pack serves as an attractant for the trap. The following text below represents text that may appear on the outer carton label of a trap. Main carton/package may present the label information in multiple languages}

[Package/Carton Front Panel]

[CATCHMASTER®/LURE N KILL®] JAPANESE BEETLE TRAP

[ABN]

JAPANESE BEETLE FLORAL (FOOD) LURE

ACTIVE INGREDIENT:	BY WT
Phenylethyl propionate (PEP).....	9.84%
Geraniol.....	9.84%
Eugenol.....	23.00%
OTHER INGREDIENTS:.....	57.32%
TOTAL:.....	100.00%

Net Weight: 0.26 oz (7.4 g)/Floral Lure

JAPANESE BEETLE SEX LURE

ACTIVE INGREDIENT:	BY WT
(R,Z)-5-(1-Decenyl) dihydro-2(3H)-furanone.....	00.47%†
OTHER INGREDIENTS:.....	99.53%
TOTAL:.....	100.00%

† Equivalent to 1 mg japonilure pheromone A.I./dispenser

Net Weight 0.008 oz (0.23 g)/Sex Lure

NET WEIGHT: 0.27 oz (7.63 g)/Bait Pack

[Net Contents: 1 trap/ 2 traps/ 3 Traps/ 6 traps]

[NOTICE: AP&G Co. makes no warranty, express or implied, for any particular purposes concerning the product, other than those which are contained on this label. AP&G Co. will not accept liability for damage or injury resulting from misuse.]

This Japanese Beetle Bait Pack consists of a dual sex lure and floral (food) lure system, which attracts two to five times more Japanese beetles than traps with only a single lure. The lures combine to draw male and female Japanese beetles into a trap...and away from valuable ornamentals, fruit trees, vegetables, flowers and shrubs. This product contains no killing agent to damage the environment and will not harm beneficial insects or attract nuisance animals. Because of the unique controlled release system, the japonilure sex pheromone and floral attractant bait pack is designed to last for the entire trapping season.

KEEP OUT OF REACH OF CHILDREN CAUTION

See other panel for additional precautionary statements

[Package/carton Side panels and/or Back Panel]

DIRECTIONS FOR USE:

It is a violation of Federal law to use this product in a manner inconsistent with its labeling.

Trap assembly:

1. Slide vanes together at the slots to form a cross.
2. Attach the twist tie by inserting about 4" through the holes in the top vane assembly as shown in the diagram and twist to secure the trap.
3. Attach one of the disposable collection bags to the vane assembly by gently sliding the holes in the bag over the cutout hooks on the lower end of the trap vanes.

Bait placement:

4. Remove the bait pack from its protective package. Peel the protective cover (marked "peel") from the Japanese Beetle Sex Lure/Floral Lure Bait Pack.
5. Peel the paper from the adhesive strip on the back of the sex/floral lure bait pack and attach the bait onto the trap vane. Do Not Attempt To Peel Apart The Bait. Best results are obtained by attaching the bait pack to the lower third of the trap vane.

TRAP PLACEMENT, APPLICATION RATE AND USE:

1. Place traps as beetles emerge and are noticed.
2. Place traps on the generally upwind side of vegetable gardens, flower gardens, ornamental shrub plantings and other outside landscape planting attacked by the beetles. Apply traps at the rate of one trap per 50 linear feet along two sides of plant perimeters. For example, if the site is 1-50 linear feet, place only one trap on each of the two sides. If the site is 51-100 linear feet place two traps on each of the two sides, etc. DO NOT enclose the treated site with traps.
3. Hang traps from any suitable post or stand in sunny areas 3 to 5 feet above the ground.
4. Place traps at least 10 feet away from the plantings as they may attract beetles to the foliage if placed closer.
5. Replace bags when full. If trap catches decline and beetles are still present, replace bait pack. Remove traps from the site when beetles are no longer present.

[Package/carton Side panels and/or Back Panel]

[Japanese Beetle Trap contains:]

[1 Bag] [3 Bags]

[2 interlocking vanes] [6 Interlocking vanes]

[1 lid]

[1 twist tie] [3 twist ties]

[1 bait pack] [3 bait packs]

STORAGE AND DISPOSAL:

Do not contaminate water, food, or feed by storage and disposal.

PESTICIDE STORAGE: Store unopened sex lure/floral lure bait pack in a cool dry place or refrigerate until ready for use.

PESTICIDE DISPOSAL: Wastes resulting from the use of this product must be disposed of on site or at an approved waste disposal facility.

CONTAINER DISPOSAL: Non-refillable container. Do not reuse or refill this container. Wrap container and put in trash or offer for recycling

PRECAUTIONARY STATEMENTS

Hazards to Humans and Domestic Animals

CAUTION: Do not open protective pouch until ready to use. Harmful if absorbed through skin. Avoid contact with skin, eyes and clothing. Causes moderate eye irritation. Harmful if swallowed. Wash hands thoroughly with soap and water after handling and before eating, drinking, chewing gum, using tobacco or using the toilet.

FIRST AID

If on skin or clothing:

- Take off contaminated clothing.
- Rinse skin immediately with plenty of water for 15-20 minutes.
- Call a poison control center or doctor for treatment advice.

If in eyes:

- Hold eye open and rinse slowly and gently with water for 15-20 minutes. Remove contact lenses, if present, after the first 5 minutes, then continue rinsing eye.
- Call a poison control center or doctor for treatment advice.

If Swallowed:

- Call poison control center or doctor immediately for treatment advice.
- Have person sip a glass of water if able to swallow*
- Do not induce vomiting unless told to do so by the poison control center or doctor.
- Do not give anything by mouth to an unconscious person

Have the product container or label with you when calling a poison control center or doctor, or going for treatment. Contact **1-800-858-7378** for emergency medical treatment advice.

{label may include directions in additional languages}

CATCHMASTER® is a trademark of:

AP&G Co., Inc.

75 East 2nd Street,

Bayonne, NJ 07002

[©2021]

EPA Reg. No. 8730-57-91557

EPA Est. No. 91557-NJ-1

[EPA Est. No. 91557-NJ-1

EPA Reg. No. 8730-57-91557]

[UPC BARCODE]

[*Optional Marketing Claims*]

Bait Pack Containing Long-Lasting Sex Lure and Floral (Food) Lure.

For Use in LURE N KILL® and Other Japanese Beetle Traps.

Protects Your Yard[!]

Traps over a 5,000 sq. ft. Area

Lasts [The] Entire Beetle Season!

Easy to use[.][:]

No sprays[.]

No mess[.]

For use in [CATCHMASTER®] JAPANESE BEETLE TRAP

[*Additional optional text*]

Questions &/or Comments Call 1-800-xxx-xxxx www.subregistrantname.com

Visit www.subregistrant.com to buy replacement lures for this trap. Replacement lures for this trap are available at www.subregistrant.com. To buy replacement lures for this trap, visit

www.subregistrant.com.

Reuse this trap as many times as desired. Visit [www. subregistrant.com](http://www.subregistrant.com) for replacement lures.

[Insert subregistrant name] is committed to reducing waste and being a good environmental steward.

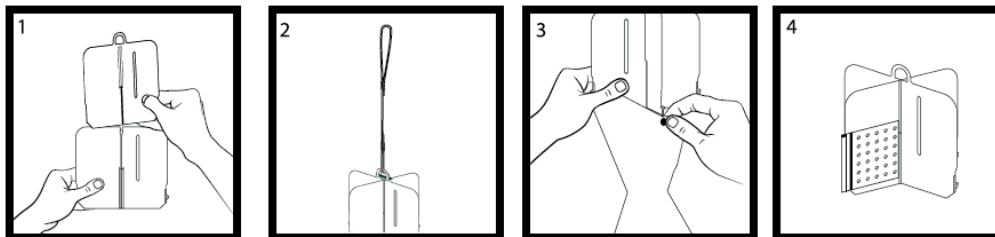
Visit www. subregistrant.com to buy replacement lures for this trap.

[Insert subregistrant name] is committed to waste reduction and environmental stewardship. Visit www.subregistrant.com to buy replacement lures for this trap. [Lure/Attractant] Refill(s) Available

[Additional] [Disposable] [Liner] Bags Available Reusable Trap with [Lure/Attractant] Refill

[Additional] Lure/Attractant Refill(s) & Disposable [Liner] Bags Available Reuse Trap as Many Times as Desired. [Additional] Lure/Attractant Refill(s) & Disposable/Disposal [Liner] Bags Are Available for Purchase.

[Possible Images. Color/appearance may vary]



Label text specific to Supplemental Distributor EPA Company No. 91557, AP&G Co.
Trap packaged with bait pack or bait pack refill; Catchmaster Japanese Beetle Trap

{Note to Reviewer: This sub-registrant may package the Japanese beetle bait pack with the Catchmaster® Japanese beetle trap in the same carton or as a refill pack. The Japanese beetle bait pack serves as an attractant for the trap. The following text below represents text that may appear on the label insert of a trap. AP&G Co. may present the label information in multiple languages}

[Beetle trap instructions Insert, English Panel one/front panel]

[CATCHMASTER®] JAPANESE BEETLE TRAP

[ABN]

Japanese Beetle Floral (Food) Lure

ACTIVE INGREDIENTS:	BY WT
Phenylethyl propionate (PEP).....	9.84%
Geraniol.....	9.84%
Eugenol.....	23.00%
OTHER INGREDIENTS:	<u>57.32%</u>
TOTAL:	100.00%

Net Weight: 0.26 oz (7.4 g)/Floral Lure

Japanese Beetle Sex Lure

ACTIVE INGREDIENT:	BY WT
(R,Z)-5-(1-Decenyl) dihydro-2(3H)-furanone.....	00.47%†
OTHER INGREDIENTS:	99.53%
TOTAL:	100.00%

† Equivalent to 1 mg japonilure pheromone A.I./dispenser

Net Weight 0.008 oz (0.23 g)/Sex Lure

NET WEIGHT: 0.27 oz (7.63g)/Bait Pack

[CONTENTS: One Sex Lure/Floral Lure Bait Packs [Contents may appear on outer packaging but not on insert]]

KEEP OUT OF REACH OF CHILDREN CAUTION

See inside booklet for First Aid, additional precautionary Statements and complete Directions for Use.

[Insert English Panel two]

DIRECTIONS FOR USE:

It is a violation of Federal law to use this product in a manner inconsistent with its labeling.

TRAP ASSEMBLY:

1. Slide vanes together at the slots to form a cross.
2. Attach the twist tie by inserting about 4" through the holes in the top vane assembly as shown in the diagram and twist to secure the trap.
- 3 Attach one of the disposable collection bags to the vane assembly by gently sliding the holes in the bag over the cutout hooks on the lower end of the trap vanes. [image]

BAIT PLACEMENT:

4. Remove the bait pack from its protective package. Peel the protective cover (marked "peel") from the Japanese Beetle Sex Lure/Floral Lure Bait Pack.
5. Peel the paper from the adhesive strip on the back of the sex/floral lure bait pack and attach the bait onto the trap vane. Do Not Attempt To Peel Apart The Bait. Best results are obtained by attaching the bait pack to the lower third of the trap vane.

TRAP PLACEMENT, APPLICATION RATE AND USE:

1. Place traps as beetles emerge and are noticed.
2. Place traps on the generally upwind side of vegetable gardens, flower gardens, ornamental shrub plantings and other outside landscape planting attacked by the beetles. Apply traps at the rate of one trap per 50 linear feet along two sides of plant perimeters. For example, if the site is 1-50 linear feet, place only one trap on each of the two sides. If the site is 51-100 linear feet place two traps on each of the two sides, etc. DO NOT enclose the treated site with traps.
3. Hang traps from any suitable post or stand in sunny areas 3 to 5 feet above the ground.
4. Place traps at least 10 feet away from the plantings as they may attract beetles to the foliage if placed closer.
5. Replace bags when full. If trap catches decline and beetles are still present, replace bait pack. Remove traps from the site when beetles are no longer present.

STORAGE AND DISPOSAL: Do not contaminate water, food, or feed by storage and disposal.

PESTICIDE STORAGE: Store unopened sex lure/floral lure bait pack in a cool dry place or refrigerate until ready for use.

PESTICIDE DISPOSAL: Wastes resulting from the use of this product must be disposed of on site or at an approved waste disposal facility.

CONTAINER DISPOSAL: Non-refillable container. Do not reuse or refill this container. Wrap container and put in trash or offer for recycling

[Insert English Panel three]

PRECAUTIONARY STATEMENTS:**Hazards to Humans and Domestic Animals**

CAUTION: Do not open protective pouch until ready to use. Harmful if absorbed through skin. Avoid contact with skin, eyes and clothing. Causes moderate eye irritation. Harmful if swallowed. Wash hands thoroughly with soap and water after handling and before eating, drinking, chewing gum, using tobacco or using the toilet.

FIRST AID

If on skin or clothing:
<ul style="list-style-type: none">- Take off contaminated clothing.- Rinse skin immediately with plenty of water for 15-20 minutes.- Call a poison control center or doctor for treatment advice.
If in eyes:
<ul style="list-style-type: none">- Hold eye open and rinse slowly and gently with water for 15-20 minutes. Remove contact lenses, if present, after the first 5 minutes, then continue rinsing eye.
If Swallowed:
<ul style="list-style-type: none">- Call poison control center or doctor immediately for treatment advice.- Have person sip a glass of water if able to swallow*- Do not induce vomiting unless told to do so by the poison control center or doctor.- Do not give anything by mouth to an unconscious person
Have the product container or label with you when calling a poison control center or doctor, or going for treatment. Contact 1-800-858-7378 for emergency medical treatment advice.

[Insert Back Panel]

[NOTICE: AP&G Co. makes no warranty, express or implied, for any particular purposes concerning the product, other than those which are contained on this label. AP&G Co. will not accept liability for damage or injury resulting from misuse.]

CATCHMASTER® IS A TRADEMARK OF AP&G CO., INC. OF USA
75 E 2ND STREET, BAYONNE, NJ 07002, USA
©2021 • EPA Reg. No. 8730-57-91557 • EPA EST. 91557-NJ-1

[Optional Marketing Claims]

Bait Pack Containing Long-Lasting Sex Lure and Floral (Food) Lure.
For Use in LURE N KILL® and Other Japanese Beetle Traps.
Protects Your Yard[!]
Traps over a 5,000 sq. ft. Area
Lasts [The] Entire Beetle Season!
Easy to use[.][:]
No sprays[.]
No mess[.]
For use in [CATCHMASTER®] JAPANESE BEETLE TRAP

[Additional optional text]

Questions &/or Comments Call 1-800-xxx-xxxx www.subregistrantname.com

Visit www.subregistrant.com to buy replacement lures for this trap. Replacement lures for this trap are available at www.subregistrant.com. To buy replacement lures for this trap, visit www.subregistrant.com.

Reuse this trap as many times as desired. Visit www.subregistrant.com for replacement lures.

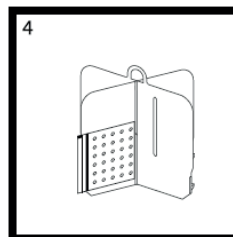
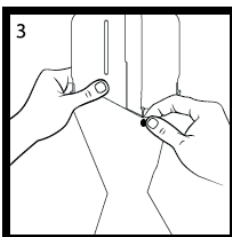
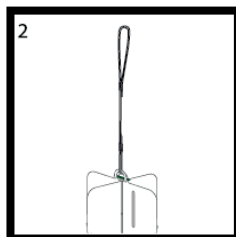
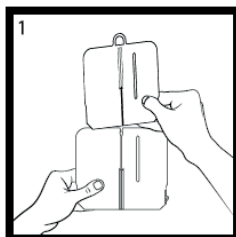
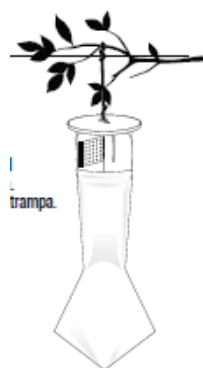
[Insert subregistrant name] is committed to reducing waste and being a good environmental steward.

Visit www.subregistrant.com to buy replacement lures for this trap.

[Insert subregistrant name] is committed to waste reduction and environmental stewardship. Visit

www.subregistrant.com to buy replacement lures for this trap. [Lure/Attractant] Refill(s) Available [Additional] [Disposable] [Liner] Bags Available Reusable Trap with [Lure/Attractant] Refill [Additional] Lure/Attractant Refill(s) & Disposable [Liner] Bags Available Reuse Trap as Many Times as Desired. [Additional] Lure/Attractant Refill(s) & Disposable/Disposal [Liner] Bags Are Available for Purchase.

[Possible Images]



Label text specific to Supplemental Distributor EPA Company No. 93792, Bug N Box.
Trap packaged with bait pack or bait pack refill; Bug N Box.

{Note to Reviewer: This sub-registrant may package the Japanese beetle bait pack with the Bug N Box Japanese Beetle Mass Trap in the same carton or as a refill pack. The Japanese beetle bait pack serves as an attractant for the trap. The following text below represents text that may appear on the outer carton/package label of a trap.}

[Package Front Panel]

Bug N Box Japanese Beetle Mass Trap [Refill]

[ABN]

Japanese Beetle Sex Lure Active Ingredients:

ACTIVE INGREDIENT:	BY WT.
(R,Z)-5-(1-Decenyl) dihydro-2(3H)furanone.....	00.47%†
OTHER INGREDIENTS:.....	99.53%
TOTAL.....	100.00%

† Equivalent to 1 mg japonilure pheromone A.I./dispenser
Net Weight 0.008 oz (0.23 g)/Sex Lure.

JAPANESE BEETLE FLORAL (FOOD) LURE

ACTIVE INGREDIENT:	BY WT.
Phenylethyl propionate (PEP).....	9.84%
Geraniol.....	9.84%
Eugenol.....	23.00%
OTHER INGREDIENTS:.....	57.32%
TOTAL:.....	100.00%

Net Weight: 0.26 oz (7.4 g)/Floral Lure

CONTENTS: One Sex Lure/Floral Lure Bait Pack

NET WEIGHT: 0.27 oz (7.63 g)/Bait Pack

Japanese Beetle Trap Package:

Top trap, including square funnel and set of interlocking vanes.

Waxed-Cardboard Base

One Bait Pack

Two water-draining bags Four landscaping staples

One complete trap assembly guide

KEEP OUT OF REACH OF CHILDREN CAUTION

(See other panel for additional precautionary statements)

[Bug N Box® is a registered trademark of Bug N Box, LLC]

[Package Back Panel]

JAPANESE BEETLE TRAP COMPONENTS:

TOP TRAP: Make the trap quick and easy to assemble.

LURE: Bait pack utilizing japonilure, the powerful Japanese beetle sex pheromone (attractant) and the three-component floral lure to attract both male and female beetle throughout the entire beetle season.
BEETLE DISPOSAL BAGS: Makes disposal of dead beetles easy to do. BASE: Made of double-layer waxed cardboard to stand up to the elements
LANDSCAPE STAPLES: To secure trap to ground.

This Bug N Box® Japanese Beetle Bait Pack consists of a dual sex lure and floral (food) lure system, which attracts two to five times more Japanese beetles than traps with only a single lure. The lures combine to draw male and female Japanese beetles into a trap...and away from valuable ornamentals, fruit trees, vegetables, flowers and shrubs. This product contains no killing agent to damage the environment and will not harm beneficial insects or attract nuisance animals. Because of the unique controlled release system, the japonilure sex pheromone and floral attractant bait pack is designed to last for the entire trapping season.

PRECAUTIONARY STATEMENTS

-Hazards to Humans and Domestic Animals-

CAUTION: Do not open protective pouch until ready to use. Harmful if absorbed through skin. Avoid contact with skin, eyes and clothing. Causes moderate eye irritation. Harmful if swallowed. Wash hands thoroughly with soap and water after handling and before eating, drinking, chewing gum, using tobacco or using the toilet.

Storage and disposal

Do not contaminate water, food, or feed by storage and disposal.

PESTICIDE STORAGE: Store unopened sex lure/floral lure bait pack in a cool dry place or refrigerate until ready for use.

PESTICIDE DISPOSAL: Wastes resulting from the use of this product must be disposed of on site or at an approved waste disposal facility.

CONTAINER DISPOSAL: Non-refillable container. Do not reuse or refill this container. Wrap container and put in trash or offer for recycling

First aid

If on skin or clothing:

- Take off contaminated clothing.
- Rinse skin immediately with plenty of water for 15-20 minutes.
- Call a poison control center or doctor for treatment advice.

If in eyes:

- Hold eye open and rinse slowly and gently with water for 15-20 minutes. Remove contact lenses, if present, after the first 5 minutes, then continue rinsing eye.
- Call a poison control center or doctor for treatment advice.

If Swallowed:

- Call poison control center or doctor immediately for treatment advice.
- Have person sip a glass of water if able to swallow*
- Do not induce vomiting unless told to do so by the poison control center or doctor.
- Do not give anything by mouth to an unconscious person

Have the product container or label with you when calling a poison control center or doctor, or going for treatment. Contact **1-800-858-7378** for emergency medical treatment advice.

Usage:

- The onset and end of Japanese beetle activity will vary by several weeks depending on weather. Warm, humid conditions will cause them to emerge earlier. Cold and rain will delay their activity. Be proactive and deploy traps before significant damage occurs.
- Check trap periodically and empty as needed. Empty trap more frequently to minimize odor of dead beetles, which may impede effectiveness of lure.
- Replace lure every 3 months, or as needed.
- Generally, beetles trapped in the container will die after several hours in the heat and sun. Pour/dump dead beetles from the bag into a trash container.

Directions for Use

It is a violation of Federal law to use this product in a manner inconsistent with its labeling. Before assembling trap, read enclosed directions for Japanese beetle trap assembly. Use one bait pack for each Japanese beetle trap. Apply the lure to the vane of the Japanese beetle trap. REPLACEMENT: Under ordinary weather conditions, Bug N Box Japanese Beetle Sex Lure/Floral Lure Bait Pack should be effective for about 12 weeks. Do not open protective pouch until ready to use. Remove the bait from its protective package. Peel the protective cover (marked peel) from the Bug N Box Japanese Beetle Sex Lure/Floral Lure Bait Pack. Remove the paper from the adhesive strip on the back of the Sex Lure/Floral Lure Bait Pack and attach the bait onto the trap vane. Do not attempt to peel apart the bait pack.

ASSEMBLY / SETUP:

Fold base into shape using tabs to hold sides together; bend flaps at bottom of base so that they lay flush with the ground.

Assemble top trap device by inserting side tab into slot; cross vane pieces slide into each other and then into four center slots on top of square funnel. Entire top trap assembly then slides into center square hole of lid.

Pull included plastic bag through center hole, hold in place with top trap. Make sure plastic bag does not block funnel.

Use landscape staples to secure trap to ground. Consider using weights such as bricks or rocks if placing trap on hard surface.

PLACE / SET LURE:

Peel away the clear plastic layer, which covers the “windows” of the sex lure and floral lure compartments. DO NOT REMOVE LURES FROM BAIT PACK.

Peel off the back paper covering the sticky side of the pouch.

Press the sticky side on any surface of the cross vane until it stays in place.

NOTICE: Bug N Box, LLC makes no warranty, express or implied, for any particular purposes concerning the product, other than those which are contained on this label. Bug N Box, LLC will not accept liability for damage or injury resulting from misuse.

Made in the USA [For Bug N Box®] by
ABERDEEN ROAD COMPANY [d/b/a HERCON ENVIRONMENTAL]
Emigsville, PA 17318-0467

EPA Reg. No. 8730-57-93792
EPA Est No. 93792-MO-1

[Bug N Box® is a registered trademark of Bug N Box, LLC]

[Optional Marketing Claims]

Bait Pack Containing Long-Lasting Sex Lure and Floral (Food) Lure.
For Use in Bug N Box and Other Japanese Beetle Traps.
Give Your Plants a Chance™!
The Waxed Cardboard base is guaranteed to last the entire beetle season.
One complete trap assembly guide

[Optional Marketing Claims]

[Additional optional text]

Questions &/or Comments Call 1-800-xxx-xxxx www.subregistrantname.com

Visit www.subregistrant.com to buy replacement lures for this trap. Replacement lures for this trap are available at www.subregistrant.com. To buy replacement lures for this trap, visit www.subregistrant.com.

Reuse this trap as many times as desired. Visit www.subregistrant.com for replacement lures.

[Insert subregistrant name] is committed to reducing waste and being a good environmental steward.

Visit www.subregistrant.com to buy replacement lures for this trap.

[Insert subregistrant name] is committed to waste reduction and environmental stewardship. Visit www.subregistrant.com to buy replacement lures for this trap. [Lure/Attractant] Refill(s) Available [Additional] [Disposable] [Liner] Bags Available Reusable Trap with [Lure/Attractant] Refill [Additional] Lure/Attractant Refill(s) & Disposable [Liner] Bags Available Reuse Trap as Many Times as Desired. [Additional] Lure/Attractant Refill(s) & Disposable/Disposal [Liner] Bags Are Available for Purchase.

**Label text specific to Supplemental Distributor EPA Company No. 93792, Bug N Box.
Trap packaged with bait pack or bait pack refill; Bug N Box.**

{Note to Reviewer: This sub-registrant may package the Japanese beetle bait pack with the Bug N Box Japanese Beetle Mass Trap in the same carton or as a refill pack. The Japanese beetle bait pack serves as an attractant for the trap. The following text below represents text that may appear on an insert with the trap.}

[Package Insert]

[LURE N KILL® JAPANESE BEETLE/ ABN]

Bug N Box Japanese Beetle Mass Trap [Refill]

[Homeowner's Japanese Beetle Trap Assembly Guide]

Japanese Beetle Sex Lure Active Ingredients:

ACTIVE INGREDIENT:	BY WT.
(R,Z)-5-(1-Decenyl) dihydro-2(3H)furanone.....	00.47%†
OTHER INGREDIENTS:.....	99.53%
TOTAL.....	100.00%

† Equivalent to 1 mg japonilure pheromone A.I./dispenser
Net Weight 0.008 oz (0.23 g)/Sex Lure.

JAPANESE BEETLE FLORAL (FOOD) LURE

ACTIVE INGREDIENT:	BY WT.
Phenylethyl propionate (PEP).....	9.84%
Geraniol.....	9.84%
Eugenol.....	23.00%
OTHER INGREDIENTS:.....	57.32%
TOTAL:.....	100.00%

Net Weight: 0.26 oz (7.4 g)/Floral Lure

CONTENTS: One Sex Lure/Floral Lure Bait Pack

NET WEIGHT: 0.27 oz (7.63 g)/Bait Pack

Japanese Beetle Trap Package:

Top trap, including square funnel and set of interlocking vanes.

Waxed-Cardboard Base

One Bait Pack

Two water-draining bags Four landscaping staples

One complete trap assembly guide

**KEEP OUT OF REACH OF CHILDREN
CAUTION**

(See other pages for additional precautionary statements)

[Bug N Box® is a registered trademark of Bug N Box, LLC]

This waxed cardboard mass-trapping Bug N Box® Japanese Beetle Trap is easily assembled by interlocking the two bright yellow vanes and attaching a dual sex lure and floral (food) lure bait pack which attract two to five times more Japanese beetles than traps with only a single lure. The beetles attracted by the sex and floral lures and the vanes' bright color, strike the vane and fall into the box and die.

The active ingredient in the sex lure is japonilure, the exact copy of the powerful Japanese beetle sex pheromone (attractant), released by the adult female beetle to attract her mate. The food lure consists of three components which give off a distinctive floral scent that attracts both male and female beetles throughout the entire beetle season. This product contains no killing agent to damage the environment and will not harm beneficial insects or attract nuisance animals.

JAPANESE BEETLE TRAP COMPONENTS:

TOP TRAP: Make the trap quick and easy to assemble.

LURE: Bait pack utilizing japonilure, the powerful Japanese beetle sex pheromone (attractant) and the three-component floral lure to attract both male and female beetle throughout the entire beetle season.

BEETLE DISPOSAL BAGS: Makes disposal of dead beetles easy to do.

BASE: Made of double-layer waxed cardboard to stand up to the elements

LANDSCAPE STAPLES: To secure trap to ground.

PRECAUTIONARY STATEMENTS

-Hazards to Humans and Domestic Animals-

CAUTION: Do not open protective pouch until ready to use. Harmful if absorbed through skin. Avoid contact with skin, eyes and clothing. Causes moderate eye irritation. Harmful if swallowed. Wash hands thoroughly with soap and water after handling and before eating, drinking, chewing gum, using tobacco or using the toilet.

First aid

If on skin or clothing:

- Take off contaminated clothing.
- Rinse skin immediately with plenty of water for 15-20 minutes.
- Call a poison control center or doctor for treatment advice.

If in eyes:

- Hold eye open and rinse slowly and gently with water for 15-20 minutes. Remove contact lenses, if present, after the first 5 minutes, then continue rinsing eye.
- Call a poison control center or doctor for treatment advice.

If Swallowed:

- Call poison control center or doctor immediately for treatment advice.
- Have person sip a glass of water if able to swallow*
- Do not induce vomiting unless told to do so by the poison control center or doctor.
- Do not give anything by mouth to an unconscious person

Have the product container or label with you when calling a poison control center or doctor, or going for treatment. Contact **1-800-858-7378** for emergency medical treatment advice.

Directions for Use:

It is a violation of Federal law to use this product in a manner inconsistent with its labeling.

Before assembling trap, read enclosed directions for Japanese beetle trap assembly [Read directions for Japanese beetle trap assembly BEFORE using the bait pack]. Use one bait pack for each Japanese beetle trap. Apply the lure to the vane of the Japanese beetle trap. **REPLACEMENT:** Under ordinary weather conditions, Bug N Box Japanese Beetle Sex Lure/Floral Lure Bait Pack should be effective for about 12 weeks.

Storage and disposal

Do not contaminate water, food, or feed by storage and disposal.

PESTICIDE STORAGE: Store unopened sex lure/floral lure bait pack in a cool dry place or refrigerator until ready for use.

PESTICIDE DISPOSAL: Wastes resulting from the use of this product must be disposed of on site or at an approved waste disposal facility.

CONTAINER DISPOSAL: Non-refillable container. Do not reuse or refill this container. Wrap container and put in trash or offer for recycling

[TRAP] ASSEMBLY DIRECTIONS:

Fold base into shape using tabs to hold sides together; bend flaps at bottom of base so that they lay flush with the ground.

Assemble top trap device by inserting side tab into slot; cross vane pieces slide into each other and then into four center slots on top of square funnel. Entire top trap assembly then slides into center square hole of lid.

Pull included plastic bag through center hole, hold in place with top trap. Make sure plastic bag does not block funnel.

Use landscape staples to secure trap to ground. Consider using weights such as bricks or rocks if placing trap on hard surface.

[SETUP]

[ATTACHING THE DUAL LURE:] Peel away the clear plastic layer, which covers the “windows” of the sex lure and floral lure compartments. **DO NOT REMOVE LURES FROM BAIT PACK.**

Peel off the back paper covering the sticky side of the pouch. Press the sticky side on any surface of the cross vane until it stays in place. [ATTACHING THE DUAL LURE: Remove the lure from its protective pouch. Peel off the backing paper covering the sticky side of sex lure. Attach sex lure by pressing the sticky side against the yellow vane surface.]

NOTICE: Bug N Box, LLC makes no warranty, express or implied, for any particular purposes concerning the product, other than those which are contained on this label. Bug N Box, LLC will not accept liability for damage or injury resulting from misuse.

Made in the USA [For Bug N Box®] by
ABERDEEN ROAD COMPANY [d/b/a HERCON ENVIRONMENTAL]
Emigsville, PA 17318-0467

EPA Reg. No. 8730-57-93792

EPA Est No. 93792-MO-1

[Bug N Box® is a registered trademark of Bug N Box, LLC]

[Optional Marketing Claims]

Bait Pack Containing Long-Lasting Sex Lure and Floral (Food) Lure.
For Use in Bug N Box and Other Japanese Beetle Traps.
Give Your Plants a Chance™!
The Waxed Cardboard base is guaranteed to last the entire beetle season.
One complete trap assembly guide

[Additional optional text]

Questions &/or Comments Call 1-800-xxx-xxxx www.subregistrantname.com

Visit www.subregistrant.com to buy replacement lures for this trap. Replacement lures for this trap are available at www.subregistrant.com. To buy replacement lures for this trap, visit www.subregistrant.com.

Reuse this trap as many times as desired. Visit www.subregistrant.com for replacement lures.

[Insert subregistrant name] is committed to reducing waste and being a good environmental steward.

Visit www.subregistrant.com to buy replacement lures for this trap.

[Insert subregistrant name] is committed to waste reduction and environmental stewardship. Visit www.subregistrant.com to buy replacement lures for this trap. [Lure/Attractant] Refill(s) Available [Additional] [Disposable] [Liner] Bags Available Reusable Trap with [Lure/Attractant] Refill [Additional] Lure/Attractant Refill(s) & Disposable [Liner] Bags Available Reuse Trap as Many Times as Desired. [Additional] Lure/Attractant Refill(s) & Disposable/Disposal [Liner] Bags Are Available for Purchase.