

**HEALTH-CHEM LURE N KILL™ ROACH BAIT**

OUTER COVER

FROM HEALTH-CHEM

**LURE N KILL™  
Roach & Ant Killer**



WITH EXCLUSIVE SEX LURE

NO MESS  
NO AEROSOL ODOR  
KILLS WITHOUT SPRAYING

**INSECTICIDAL BAIT**

ACTIVE INGREDIENTS: 2-(1-methylethoxy) phenol methylcarbamate 10.000%  
Periplanone B (1R-(1R)-2R-5S-6E,10R)-(+)-1-8-methylene-5-(1-methylethyl)-  
spiro[11-oxabicyclo[8.1.0]undec-6-ene-2,2-oxiran]-3-one <C 001%  
INERT INGREDIENTS: 90.000% \*Equivalent to 0.7 microgram per unit

**CAUTION: KEEP OUT OF REACH OF CHILDREN**  
Read Directions and Precautions Before Use

CONTAINS 3 4" x 6" INSECTICIDAL BAIT AND TRAYS  
TOTAL NET WT. 0.65 OZ. (18.42 grams)

**HEALTH-CHEM LURE N KILL™ ROACH BAIT**

HEALTH-CHEM LURE N KILL™ INSECTICIDAL BAIT

HEALTH-CHEM LURE N KILL™ INSECTICIDAL BAIT

FROM HEALTH-CHEM

**LURE N KILL™  
Roach & Ant Killer  
INSECTICIDAL BAIT**

WITH EXCLUSIVE SEX LURE

HEALTH-CHEM LURE N KILL uses a patented *Periplaneta* sex lure to wipe out palmetto bugs (American cockroach) and waterbugs when they come in contact with the contact adhesive bait. Also kills other roaches and ants that walk across the insecticidal bait surface. HEALTH-CHEM LURE N KILL starts killing on contact then keeps on working until they are dead. **HEALTH-CHEM LURE N KILL kills them, kills them, dead.**

For use in and around the home, schools, theaters, warehouses, motels, hotels, and in public, industrial and institutional establishments, and non food areas of restaurants and food service establishments.

**PRECAUTIONARY STATEMENTS**

**Hazards To Humans And Domestic Animals**

Do not open protective pouch until ready to use. Harmful if chewed. In swallowed, irritates eyes and clothing. Do not contaminate food, food containers or cooking utensils. Wash hands with soap and water after handling.

**STATEMENT OF PRACTICAL TREATMENT**

**If swallowed:** Call a physician or Poison Control Center. Drink one or two glasses of water and induce vomiting by touching back of throat with finger or if available, by administering syrup of ipecac. Do not induce vomiting or give anything by mouth to an unconscious person. Note: Physician should not give cholinesterase inhibitor or atropine as antidote.

**If on skin:** Wash off with soap and water.

**If in eyes:** Flush with plenty of water. If irritation persists, get medical attention.

**DIRECTIONS FOR USE**

It is in violation of Federal Law to use this product in a manner inconsistent with its labeling. Open pouch and remove paper backing from HEALTH-CHEM LURE N KILL insecticidal bait. This activates the surface. Press insecticidal bait on to tray and place trays with HEALTH-CHEM LURE N KILL on floors in rooms where palmetto bugs and waterbugs and other insects have been seen and where they hide. Place HEALTH-CHEM LURE N KILL on their burrows in their harborage, such as in the garage and other warm, dark out of sight locations where they hide. Place HEALTH-CHEM LURE N KILL under stoves and refrigerators. For ants, place near nest entrances and across ant trails. One baited tray per 100 square feet of surface to be treated. Use more baited trays where infestation is widespread. Keep away from open food or from places where children and pets can reach. Hand trays with insecticide reactivate insecticide on HEALTH-CHEM LURE N KILL insecticidal bait surface. Wash hands thoroughly with soap and water after handling. Replace HEALTH-CHEM LURE N KILL insecticidal baits after 30 days or when insecticide has been used. Do not use if insecticide has been used. Press is to be used to prevent cockroach infestation.

**STORAGE AND DISPOSAL**

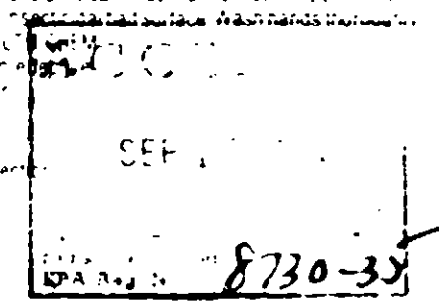
**STORAGE:** Store in a cool, dry place.

**DISPOSAL:** Wrap used trays and discard in trash.

Health-CHEM  
HEALTH-CHEM CORPORATION  
1107 Broadway, New York, N.Y. 10001

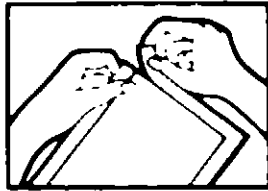
This product is covered under the Federal Insecticide, Fungicide, and Rodenticide Act, 7 U.S.C. 136-136a and 136a-136c.

Kills roaches, palmetto bugs, waterbugs and ants dead. Contains powerful SEX LURE™ the *Periplaneta* sex lure.

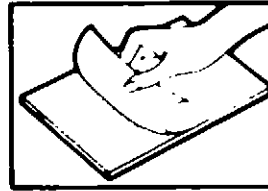


Reduced 15% of original size.

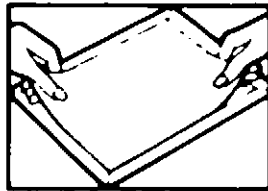
**PLACE BAIT HERE  
ADHESIVE SIDE DOWN**



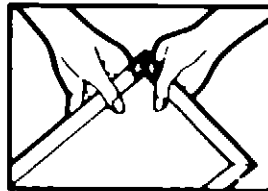
1. Open plastic pouch when ready for use.



2. Remove backing paper from sticky surface.



3. Place on tray sticky side *down*.



4. Form the tray by bending the four edges up slightly.

Place this tray out of sight where roaches are known to congregate.

**AFTER PLACEMENT, WASH  
HANDS THOROUGHLY WITH  
SOAP AND WATER**

BEND FORWARD TO FORM TRAY

BEND FORWARD TO FORM TRAY

BEND FORWARD TO FORM TRAY

ACCEPTED
SEP 12 1984
U.S. DEPARTMENT OF AGRICULTURE FEDERAL AGENCY FOR THE PROTECTION OF THE ENVIRONMENT REGISTERED UNDER EPA Reg. No. 8730-31

1/10/78 PC 124

FROM HEALTH CHEM  
**LURE N KILL™**  
**Roach & Ant Killer**  
**INSECTICIDAL BAITS**  
WITH EXCLUSIVE SEX LURE †

**Kills roaches, palmetto bugs,  
waterbugs and ants dead.**  
**Contains powerful SEX LURE for  
the *Polydora* roach.**

For use in and around the home, schools, theaters, warehouses, motels, hotels and commercial, industrial and institutional establishments, and non food areas of restaurants and food handling establishments.

**PRECAUTIONARY STATEMENTS**

**Hazards To Humans And Domestic Animals**

Do not open protective pouch until ready to use. Harmful if chewed or swallowed. Avoid contact with eyes and clothing. Do not contaminate food, food containers or cooking utensils. Wash hands with soap and water after handling.

**STATEMENT OF PRACTICAL TREATMENT**

**If swallowed:** Call a physician or Poison Control Center. Drink one or two glasses of water and induce vomiting by touching back of throat with finger, or if available, by administering syrup of ipecac. Do not induce vomiting or give anything by mouth to an unconscious person. Note to Physician: If symptoms of cholinesterase inhibition appear, atropine is antidotal.  
**If on skin:** Wash off with soap and water.  
**If in eyes:** Flush with plenty of water. If irritation persists, get medical attention.

**DIRECTIONS FOR USE**

It is in violation of Federal Law to use this product in a manner inconsistent with its labeling.

Open pouch and remove paper backing from HEALTH CHEM LURE N KILL insecticidal bait. This activates the surface. Press insecticidal bait on to tray, and place trays with HEALTH CHEM LURE N KILL on top side, in rooms where palmetto bugs and waterbugs and other roaches have been seen and where they hide. Place HEALTH CHEM LURE N KILL on the floor in kitchen, bathroom, utility/storage room, garage and other warm, dark, out of sight locations where roaches crawl, such as cabinets, under sinks, stoves and refrigerators. For ants, place near nest entrances and across ant trails. Use one baited tray per 100 square feet of surface to be treated. Use more if infestation is widespread. Keep away from open food or from places where children and pets can reach. Bend trays occasionally to reactivate insecticide on HEALTH CHEM LURE N KILL insecticidal bait surface. Wash hands thoroughly with soap and water after handling. Replace HEALTH CHEM LURE N KILL insecticidal baits after 30 days or when effectiveness is diminished to prevent cockroach reinfestation.

**STORAGE AND DISPOSAL**

**STORAGE:** Store in a cool, dry place.

This product is covered under one or more of the following U.S. Patents: 3,705,938; 3,857,934; and 3,864,488.

Hercol Division  
**HEALTH-CHEM CORPORATION**  
1107 Broadway, New York, N.Y. 10010

EPA Reg. No. 8730-35  
EPA Est. No. 8730-Pa-1

**ACTIVE INGREDIENTS:** 2-(1-methylethoxy)phenol, methylcarbamate 10.000%; Periplanone B (1R, 2R, 5S, 6E, 10R, 11); 1,8-methylene-5-(1-methylethyl)spiro[11 oxabicyclo[6.1.0]undec-6-ene-2,2'-oxirane] 3-one 0.001%;  
**INERT INGREDIENTS:** 90.000% \*Equivalent to 0.7 microgram per unit.

**CAUTION: KEEP OUT OF REACH OF CHILDREN**  
Read Directions and Precautions Before Use  
**CONTAINS 1 4" x 6" INSECTICIDAL BAIT**  
**NET WT. 0.22 OZ. (6.14 GRAMS)**