

1064
PM 12

8730-16

BEST AVAILABLE COPY

BAYGON



INSECTIape®

**7% PROPOXUR
INSECTICIDAL STRIPS**

***Kills Roaches and Waterbugs
Continuously With One Easy Application***

The insecticide is in the strip!
READ DIRECTIONS AND CAUTIONS ON BACK BEFORE USE

Active Ingredient: 2-(1-Methyl-4-hydroxy) phenol methylcarbamate*	7.0%
Inert Ingredients	93.0%
TOTAL	100.0%

Contents: 36 1 in. x 4 in. strips - Min. Net Wt.: 1.43 oz / 36 strips

CAUTION
KEEP OUT OF REACH OF CHILDREN

ACCEPTED

APR 2 1979

Under the Federal Insecticide, Fungicide, and Rodenticide Act, as amended, this pesticide is registered under Reg. No. 8730-16



INSECTape®

7% PROPOXUR

INSECTAPE is today's answer to more effective pest treatment. These easy to apply, 1" x 4" multi-layered strips kill roaches and waterbugs. Only one application of INSECTAPE is needed to work around the clock to bring relief. Length of effectiveness may vary in different situations.

The patented HERCON controlled release technology provides this long term action. Whenever the non-fumigant insecticide on the surface is removed or disturbed by insect activity or by mopping and wiping, it is replenished continuously from a specially designed storage layer sealed in the strip. Depending upon the degree of infestation, it will take from a few days to a few weeks before roach kill is achieved. A package of 36 strips is enough to treat an average size kitchen or two other rooms (kitchens usually contain more hiding places).

INSECTAPE AIDS IN THE CONTROL OF LIGHT HOUSEHOLD ROACH INFESTATIONS. IF INFESTATION PERSISTS, USE A SUPPLEMENTAL CONVENTIONAL TREATMENT. FOR HEAVIER INFESTATIONS, USE INSECTAPE ONLY AS A SUPPLEMENT TO CONVENTIONAL TREATMENTS (SPRAYS, DUSTS OR BAITS). GOOD SANITATION PRACTICES SHOULD BE FOLLOWED IN EITHER CASE.

PRECAUTIONARY STATEMENTS

Do not open protective pouch until ready to use. Strips should not be placed on exposed areas or in extremely hot locations. Avoid contact with eyes and clothing. Do not contaminate food, food containers or cooking utensils. Wash hands with soap and water after handling. Harmful if chewed or swallowed. NOTE TO PHYSICIAN: Atropine is antidotal.

STORAGE AND DISPOSAL

Dispose of empty package and used strips in trash. Wrap used strips before disposal.

DIRECTIONS FOR USE

It is a violation of Federal Law to use this product in a manner inconsistent with its labeling.

Wipe or clean surface before applying. Remove paper backing and place strips as shown in enclosed booklet, except for exposed locations where direct contact with children, pets, food or clothing is likely to occur. Apply strips in warm, dark, out-of-sight locations — in cracks, around pipes, in back of and under refrigerators and other appliances, under sinks and inside cabinets. Best results are achieved when INSECTAPE is placed in all locations shown in the enclosed booklet applicable to the room being treated. An insufficient number of strips may cause unsatisfactory results. Replace strips when effectiveness is diminished.

DO NOT USE IN FOOD AREAS OF FOOD PROCESSING PLANTS, RESTAURANTS, OR OTHER AREAS WHERE FOOD IS COMMERCIALY PREPARED OR PROCESSED. Use only in such non-food areas as garbage rooms, lavatories, floor drains, entries and vestibules, offices, locker rooms, machine rooms, boiler rooms, mop closets, and storage areas. Apply around water pipes, surfaces behind or beneath sinks, lockers, tables, pallets and similar areas, as shown in the enclosed booklet, where roaches hide or through which they may enter.

EPA Reg. No. 8730-16 EPA Est. No. 8730 PA 01
*U.S. Patent No. 3,111,539.

*BAYGON is a Reg. TM of the Parent Company
of Farbentabricken Bayer GmbH, Leverkusen

HERCULITE PRODUCTS, INC.
A Subsidiary of HEALTH-CHEM CORPORATION
New York, New York 10010

"HERCON" and "INSECTAPE" are registered trademarks of Health-Chem Corporation

© 1979

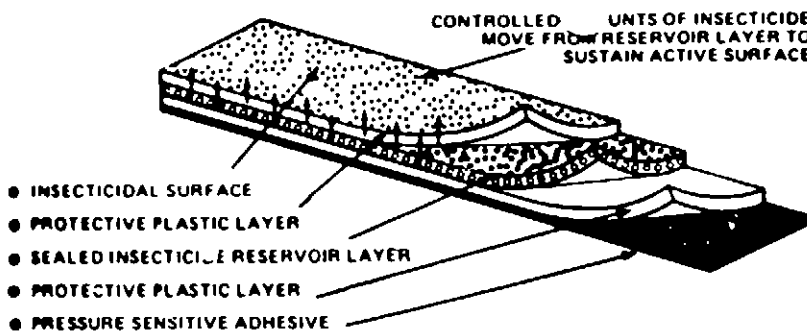
72	2.86 oz.
150	5.96 oz.
216	8.58 oz.
300	11.92 oz.

Manufacturer warrants that the product is reasonably fit for the purposes stated on the label when used in accordance with directions under normal conditions of use, but neither this warranty nor any other warranty of merchantability or fitness for a particular purpose, expressed or implied, extends to use of this product under abnormal conditions not reasonably foreseeable to manufacturer and user assumes the risk of any such use

WARRANTY:

1/2 Sec

HOW INSECTAPE STRIPS WORK



The secret is the patented HERCON controlled release technology system. The highly effective, non-fumigant insecticide is sealed and safely stored within the uniquely-designed multi-layered strip. As the surface of the strip is disturbed by insect activity or mopping and wiping, insecticide replacement automatically moves up from the protected reservoir layer to the surface. As a result of this continuous replenishing action, the INSECTAPE strips are effective in all situations.

CAUTION: Do not open protective pouch until ready to use.

- Strips should not be placed on exposed areas or in extremely hot locations.
- Avoid contact with eyes and clothing.
- Do not contaminate food, food containers or cooking utensils.
- Do not use in food areas of food handling establishments, restaurants, or other areas where food is commercially prepared, processed or served.
- Harmful if chewed or swallowed.
- Wash hands with soap and water after handling.

NOTE TO PHYSICIAN: ATROPINE IS ANTIDOTAL.

Active ingredient: 2-(1-Methylethoxy) phenol methylcarbamate* 7.0%

Inert ingredients: 93.0%

TOTAL 100.0%

*U.S. Patent No. 3,111,539.
EPA Reg. No. 8730-16

EPA Est. No. 8730 PA 01

"HERCON" and "INSECTAPE" are registered trademarks of Herculite Products, Inc.

This HERCON product is covered under U.S. Patent No. 3,864,468

HERCULITE PRODUCTS, INC.
A subsidiary of HEALTH-CHEM CORP.
New York, N.Y. 10010 U.S.A.

PRINTED IN U.S.A.

ACCEPTED
APR 3 1979
Under the Federal Insecticide, Fungicide and Rodenticide Act, as amended, this pesticide registered under EPA Reg. No. 8730-16

HERCON

INSECTAPE
7% PROPOXUR

INSECTAPE is today's first continuously-active roach killer. It comes in handy plastic strips. Kills rapidly-bred roaches. A pair of roaches, in fact, can multiply to over 300 in a month, making them extremely difficult to control. This advertisement and illustration shows how easy it is for you to now apply roach killer wherever roaches crawl or hide... without the mess of sprays and powders.

INSECTAPE meets today's need for long-term protection against roaches. The insecticide contained within the strip kills these crawling insects.

Install INSECTAPE strips where roaches crawl and hide. Dark, out-of-sight locations, as illustrated. Typical roach found areas are in the kitchen and bathroom. Other suggested locations. Keep in mind that each package will treat an average household kitchen (where there are more roach hiding places) or two other rooms.

To obtain kill, be sure to use ALL 36 strips. The more strips you place, the better chance you have of stopping roaches crawling from hidden harborages or hiding. easy-to-apply INSECTAPE treatment works. INSECTAPE provide you effective, long-term protection.

You will see improvement in just a few days to

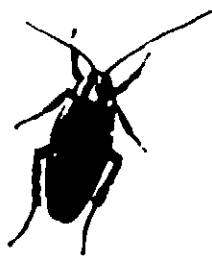
CAUTION:
KEEP OUT OF REACH OF CHILDREN

BEST AVAILABLE

THE NEED FOR ROACH PROTECTION

Each year, cockroaches top the most unwanted list of insects. They do more emotional and psychological damage than any other pest, not to mention the waste and loss they cause by contaminating foodstuffs. Roaches have been suspected of carrying bacteria germs that can transmit disease. Moreover, recent research indicated that cockroaches may even aggravate respiratory problems in heart/lung patients.

While there are several different species of cockroaches, depending upon your location, the German cockroach is probably the most common you may encounter. In appearance, this roach is light tan to medium in color... 1/2 to 5/8 inch long...wings cover the rear of body. The other common varieties are American, Brown-banded, Oriental and Smoky Brown, having habits that may differ greatly.



Knowing when, where and how to use INSECTAPE is only part of obtaining effective household pest control. Your first step is good housekeeping! Be sure to thoroughly clean under and behind counters, sinks and dishwashers, under tables, baseboards and walls, inside drawers, in closets, around pipes and garbage disposal areas.

The important thing to remember is to take a few minutes to follow the label and the directions shown in this booklet.

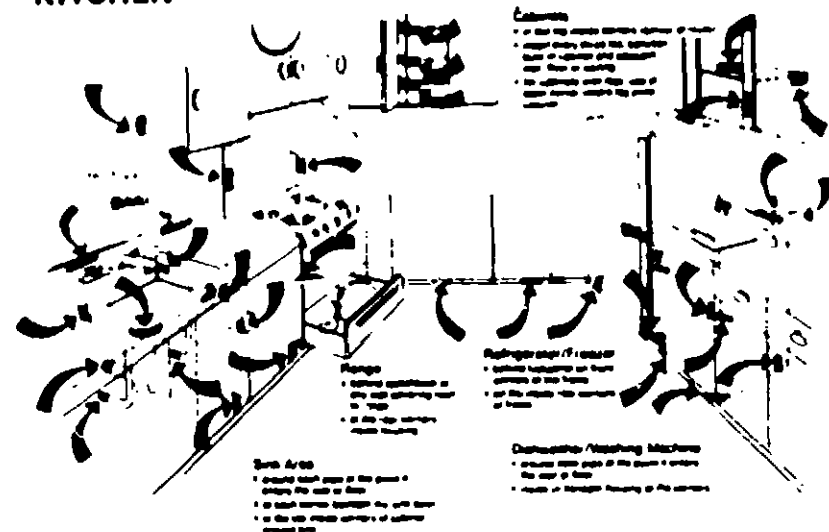
DIRECTIONS FOR USE

To assure roach kill, INSECTAPE strips should be placed in all locations illustrated here marked with an arrow regardless of where roaches have been seen. Remember, roaches prefer dark, warm and moist hiding places.

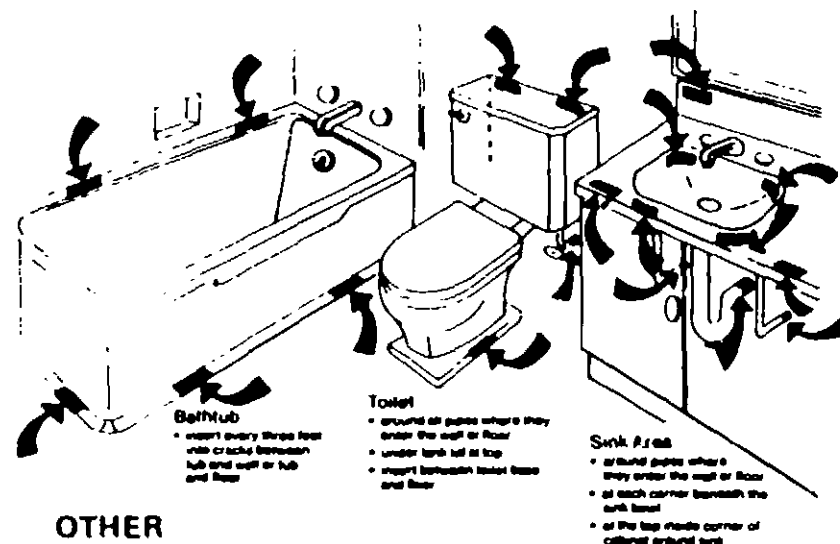
Be sure to wipe or clean surfaces before applying strips. To adhere, remove backing paper from strip. For stuffing cracks, simply fold the adhesive side of the strip back onto itself and position into place. Replace strips when effectiveness is diminished.

DO NOT PLACE STRIPS IN EXPOSED LOCATIONS WHERE DIRECT CONTACT WITH CHILDREN, PETS, FOOD OR CLOTHING IS LIKELY TO OCCUR.

KITCHEN



BATHROOM



OTHER LOCATIONS

Other potential locations for MERCURY INSECTAPE include behind electrical wall clocks, light fixtures, behind loose wallpaper or contact paper and drawers.