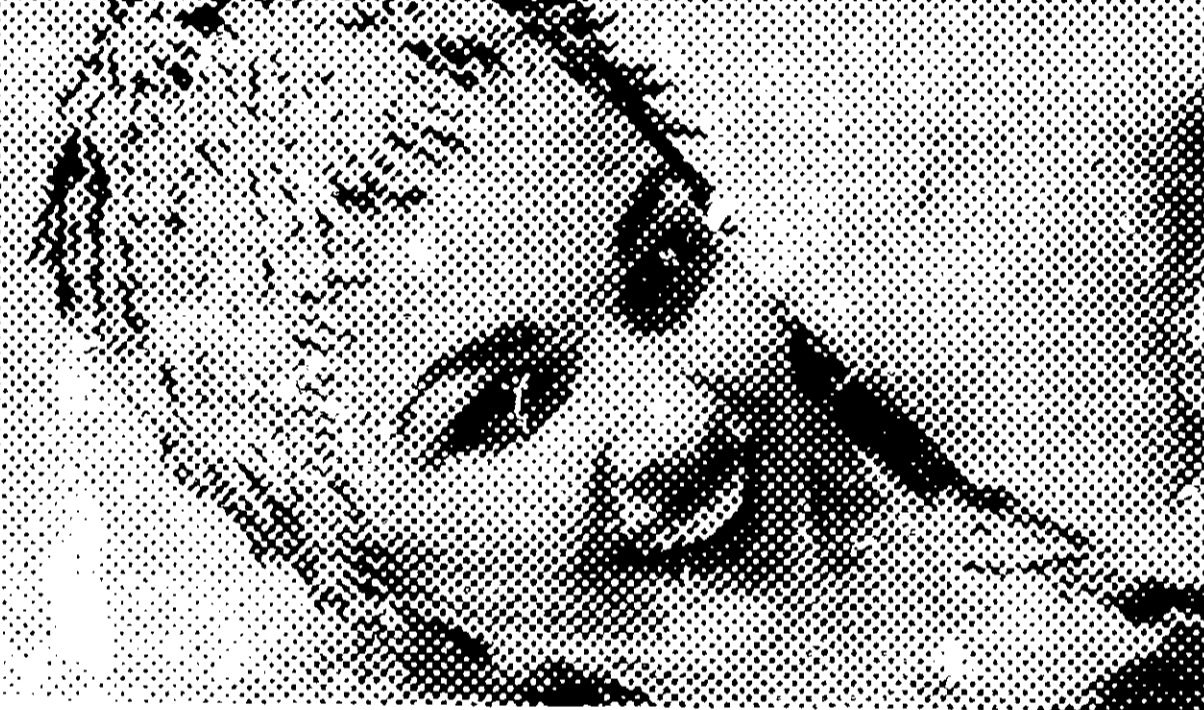


Net Wt. 10 oz.

clareco

ALGAECIDE

FOR SWIMMING POOLS



ACCEPTED

November 26, 1974

UNDER THE FEDERAL INSECTICIDE
FUNGICIDE AND RODENTICIDE ACT
FOR ECON. REGISTE-
ED UNDER NO. 8729-3 SUBJECT
TO ATTACHED COMMENTS.

NON-SUDSING KEEPS POOLS SPARKLING

ACTIVE INGREDIENTS:	
Copper Sulfate Pentahydrate	17.0%
Dichloro (2-3-dichloro-1, 4 naphthoquinone)	0.3%
INERT INGREDIENTS	82.7%
TOTAL	100.0%

CAUTION: Keep out of reach of children. Harmful if swallowed. Avoid prolonged or repeated contact with skin. Avoid contact with eyes or breathing dust.

U.S.D.A. Reg. No. 8729-3

Apply to newly filled pools or one having no visible algae. Use together with pool germicide.

HOW TO USE:

1. For best results add ALGAECIDE in early morning before bathers enter pool.
2. Dosage: 1 ounce (by volume) of CLARECO ALGAECIDE is required for each 5,000 gallons of water. (Measure dosage with a plastic household measuring cup.)
3. Premix required dosage with one quart of water. Do not use a metal container.
4. Pour mixture along edge of pool, do not add through skimmer.
5. Wait at least 30 minutes before using pool.
6. Normal dosage based on water temperature.
Below 68° F — every 2 weeks .
68° F to 78° F — once a week.
Above 78° F — twice a week.
7. If resistant algae should appear, double dosage until they are brought under control. Brushing algae off sides of pool aids algae control. Dropping ALGAECIDE directly over algae spots also helps.

ANTIDOTE

External: Wash with soap and water.

Eyes: Flush with large amounts of water, call a physician.

Internal: Drink milk or white of egg beaten with water. Induce vomiting by giving a tablespoon of salt in a glass of warm water and call a physician!

4

eco sciences, inc.



Net Wt. 10 oz.

ALGAECIDE

FOR SWIMMING POOLS

ACCEPTED

November 26, 1974

UNDER THE FEDERAL FOOD, DRUG AND COSMETIC ACT
FUNGICIDE AND RELATED PRODUCTS ACT
FOR ECONOMIC PEST CONTROL REGISTERED
ED UNDER NO. 8729-3 SUBJECT
TO ATTACHED CONDITIONS

NON-SUDSING KEEPS POOLS SPARKLING

ACTIVE INGREDIENTS:	
Copper Sulfate Pentahydrate	17.0%
Dichlone (2-3-dichloro-1, 4 naphthoquinone)	0.3%
INERT INGREDIENTS	82.7%
TOTAL	100.0%

CAUTION: Keep out of reach of children. Harmful if swallowed. Avoid prolonged or repeated contact with skin. Avoid contact with eyes or breathing dust.

U.S.D.A. Reg. No. 8729-3

Apply to newly filled pools or one having no visible algae. Use together with pool germicide.

HOW TO USE:

1. For best results add ALGAECIDE in early morning before bathers enter pool.
2. Dosage: 1 ounce (by volume) of CLARECO ALGAECIDE is required for each 5,000 gallons of water. (Measure dosage with a plastic household measuring cup.)
3. Premix required dosage with one quart of water. Do not use a metal container.
4. Pour mixture along edge of pool, do not add through skimmer.
5. Wait at least 30 minutes before using pool.
6. Normal dosage based on water temperature.
Below 68° F — every 2 weeks .
68° F to 78° F — once a week.
Above 78° F — twice a week.
7. If resistant algae should appear, double dosage until they are brought under control. Brushing algae off sides of pool aids algae control. Dropping ALGAECIDE directly over algae spots also helps.

ANTIDOTE

External: Wash with soap and water.

Eyes: Flush with large amounts of water, call a physician.

Internal: Drink milk or white of egg beaten with water. Induce vomiting by giving a tablespoon of salt in a glass of warm water and call a physician!

4

sciences, inc.