

PM 23 8660-160 3/31/98 1/2

PURSELL Polyon® Turf Fertilizer Plus DIMENSION® 140 CRABGRASS PREVENTER.

A Selective Herbicide Plus Fertilizer Combination Product that Provides Control of Crabgrass and Other Weeds (as listed) in Established Lawns and Ornamental Turfgrasses. Premium Granular Fertilizer that Feeds Your Lawn - Providing The Nutrients Needed for A Beautiful, Green and Healthy Lawn.
Contains Dimension Turf Herbicide - An Effective Herbicide for Crabgrass Control. NON-STAINING
Can Be Applied Up to 4 Weeks Longer Than Other Crabgrass Preventers and Controls Crabgrass All Season Long.

ACTIVE INGREDIENT:
 Dithiopyr, 3,5-pyridinedicarbonyloic acid, 2-(difluoromethyl)-4-(2-methylpropyl)-6-(trifluoromethyl)-S,S-dimethyl ester - 0.14%

INERT INGREDIENTS: - 99.86%
TOTAL 100.00%

Product protected by U.S. Patent No. 4,692,184. Other patents pending.
 Dimension® is a Reg. Trademark of Rohm & Haas Company
 Read the entire label before using this product. Use only according to label instructions.
 The Contents of this 10.2 lb. Bag will Treat up to 5,000 Sq. Ft. of Turfgrass.

PRECAUTIONARY STATEMENTS
HAZARDS TO HUMANS AND DOMESTIC ANIMALS
CAUTION: Causes eye irritation. Harmful if inhaled. Avoid contact with eyes or clothing. Avoid breathing dust. Wash thoroughly with soap and water after handling. Remove contaminated clothing and wash before reuse. Prolonged or frequently repeated skin contact while handling this material may cause allergic reaction in some individuals.

ENVIRONMENTAL HAZARDS
 This product is toxic to fish and highly toxic to other aquatic organisms including oysters and shrimp. Use with care when applying to turf areas adjacent to any body of water. Drift and runoff from treated turf may adversely affect aquatic organisms in adjacent aquatic sites. Do not apply directly to water, or to areas where surface water is present, or to intertidal areas below the mean high water mark. Do not apply when weather conditions favor drift from treated areas. Do not contaminate water when disposing of equipment washwaters.

Not for use on turf being grown for sale or other commercial use as sod, or for commercial seed production, or for research purposes. This product is not for use in the State of New York.

Guaranteed Fertilizer Analysis: 30-5-5

Total Nitrogen (N)	XX%
Water-insoluble Nitrogen XX%	
Ammoniacal Nitrogen XX%	
Urea Nitrogen** XX%	
Available Phosphate Acid (P2O5)	XX%
Soluble Potash (K2O)	XX%

Magnesium (Mg) XX%; Iron (Fe) XX%; Manganese (Mn) XX% Nutrient Sources: Sulfur Coated Urea, Urea, Methylene Urea, Ammonium Phosphate, Ammonium Sulfate, Diammonium Phosphate, Sulfate of Potash, Ferrous Sulphate, Manganese Oxide, Magnesium Oxide, Dolomite, Chlorine (Cl), not more than XX%. ** XX% Slowly Available Urea Nitrogen from Sulfur Coated Urea.

General information
 This provides both weed control and the required nutrients for optimum turf grass growth all in a single product.
 This product contains Dimension® herbicide, a selective herbicide that can be applied up to 4 weeks longer than other crabgrass preventers and provide up to 4 months control of crabgrass and other grass and broadleaf weeds prior to their establishment in lawns and ornamental turfgrasses.
 Use on lawns and ornamental turfgrasses that are well established (See "Can be used on (mowing Turfgrasses)" section for a list of the tolerant turfgrasses). This product will not harm nearby established ornamentals when used according to label.

Use Precautions
 This product should only be applied to lawns and ornamental turfgrasses that are well established. Use of this product on lawns and ornamental turfgrasses that are not well established, or have been weakened by stress due to mechanical operations, pests, excessive temperatures, or lack of moisture may increase the chances for turfgrass injury.

How To Apply - Application Equipment and instructions
 This product can be applied with a drop or rotary type spreader designed to apply granular fertilizers.
 For best results, apply the product evenly and uniformly over the turfgrass area avoiding streaking, skips or overlaps. Avoid the use of spreaders that would apply this product in narrow rows or concentrated bands. Before each application, calibrate the spreader according to the equipment manufacturer's directions. Adjust the spreader settings such that the spreader delivers the appropriate application rates of this product as recommended below. *A more uniform application can be made by spreading one-half of the recommended amount of this product over the turfgrass area and then applying the remaining one-half of this product at a light angle to the previous application direction. **See 1/2 rate Spreader Settings. Check application equipment frequently to insure equipment is functioning properly and applying a uniform distribution of product.

Recommended Use Rate For This 10.2 pound Bag

Region of U.S.	Length of Weed Control	
	2-3- Months Control	3-4- Months Control
North	1 Bag to treat 5,000 sq.ft.	1 Bag to treat 3,500 sq.ft
South	1 Bag to treat 3,500 sq.ft	1 Bag to treat 2,500 sq.ft

Spreader Settings For the Above Applications

Spreader	5,000 SQ.FT.		3,500 SQ.FT.		2,500 SQ.FT.	
	1/2 rate	full rate	1/2 rate	full rate	1/2 rate	full rate
EV-N SPRED Rotary (2600)	XX	XX	XX	XX	XX	XX
Orho Drop (5000)	XX	XX	XX	XX	XX	XX
Orho Rotary (6000)	XX	XX	XX	XX	XX	XX
Precision Rotary	XX	XX	XX	XX	XX	XX
Republic EZ Drop	XX	XX	XX	XX	XX	XX
Republic EZ Rotary	XX	XX	XX	XX	XX	XX
Quaker Rotary	XX	XX	XX	XX	XX	XX
Scotts Drop (PF3)	XX	XX	XX	XX	XX	XX
Scotts Easy Green	XX	XX	XX	XX	XX	XX
Scotts Spooky Green	XX	XX	XX	XX	XX	XX
True Temper Rotary	XX	XX	XX	XX	XX	XX

When To Apply - Application Timings
 This product may be applied either in the spring or in the fall for the control of weeds. When this product is applied in the fall, a sequential or second application should be made the following spring to provide season-long control of weeds.
 If this product is applied in the fall, DO NOT reseed, overseed or sprig turfgrasses within 16 weeks after application of this product due to potential turfgrass injury to the newly reseeded, overseeded or sprigged turfgrasses.

**KEEP OUT OF REACH OF CHILDREN
CAUTION**

FIRST AID: IF IN EYES- Immediately flush eyes with plenty of water. Get medical attention if irritation persists. **IF INHALED-** Remove individual to fresh air. Seek medical attention if breathing difficulty develops.

DIRECTIONS FOR USE
 It is a violation of Federal law to use this product in any manner inconsistent with its labeling.

STORAGE AND DISPOSAL

STORAGE: Store this product only in its original container in a dry, cool, secured storage area. Do not contaminate water, foodstuffs, feed or seed by storage or disposal. **PRODUCT DISPOSAL:** Wastes resulting from the use of this product that cannot be used or chemically reprocessed should be disposed of in a landfill approved for pesticide disposal or in accordance with applicable Federal, state or local procedures. **EMPTY CONTAINER DISPOSAL:** Do not reuse bag. Completely empty bag into application equipment. Dispose of emptied bag(s) in a sanitary landfill, or by incineration, or, if allowed by state and local authorities, by burning, if burned, stay out of smoke. **SPILL:** In case of spill, sweep up material and dispose of material according to "product disposal" directions listed above.

CONDITIONS OF SALE AND WARRANTY

Pursell Industries, Inc. warrants that the product conforms to its chemical description and is reasonably fit for the purpose stated on the label only when used in accordance with label directions under normal conditions of use. Pursell Industries, Inc. MAKES NO OTHER EXPRESS OR IMPLIED WARRANTIES EITHER OF MERCHANTABILITY OR FITNESS FOR A PARTICULAR USE. Handling, storage and use of the product by Buyer or User are beyond the control of Pursell Industries, Inc. and Seller. Risks such as crop injury, ineffectiveness or other unintended consequences resulting from, but not limited to, weather or soil conditions, presence of other materials, disease, pests, drift to other crops or property or failure to follow label directions will be assumed by the Buyer or User. IN NO CASE WILL PURSELL INDUSTRIES, INC. OR SELLER BE HELD LIABLE FOR CONSEQUENTIAL, SPECIAL OR INDIRECT DAMAGES RESULTING FROM THE HANDLING, STORAGE OR USE OF THIS PRODUCT.
 (dmw014b.pms09-21-85 EPA accpt'd 11-28-85/8660-160.pms5Finlab w/conthe 12-08-85/resubmit 03-13-88)

Length of Weed Control

This product will provide up to 4 months of weed control if applied according to label directions. The actual length of control will vary depending on use rate, weather conditions, condition of the turfgrass, intensity of weed pressure, and the location or "Region" within the United States that this product is being applied. Please check the map below to determine which "Region" of the U.S. that applies to your particular use area.



Reseeding, Overseeding, or Sprigging of turfgrasses into areas that have been previously treated with this product should be delayed until 16 weeks after application. Reseeding, overseeding, or sprigging within 16 weeks or earlier after application may inhibit the establishment of the newly reseeded, overseeded or sprigged turfgrasses. DO NOT apply more than 8.2 pounds of this product per 1,000 square feet of turfgrass area during the year. DO NOT apply to flowers, vegetables, or fruit trees. DO NOT use clippings from treated turf for mulching around flowers, vegetables or fruit trees. DO NOT apply this product to pastures. **Keep people and pets off treated areas until dust has settled.**

Weeds Controlled/Suppressed

- This product will provide control of crabgrass and other grass and broadleaf weeds when applied prior to their establishment in established lawns and ornamental turfgrasses.
- | | | |
|------------------|------------------------|--------------------|
| Annual Bluegrass | Goosegrass | Blistergrass |
| Annual Ryegrass | Green Foxtail | Buttercup Oxalis |
| Barnyardgrass | Kikuyugrass (seedling) | Carolina Geranium |
| Crabgrass | Perennial Ryegrass | Chickweed |
| Crowfootgrass | Smutgrass (seedling) | Common Lespedeza |
| | Yellow Foxtail | Common Purslane |
| | | Corn Speedwell |
| | | Yellow Wood-sorrel |

Use on the following Turfgrasses

- This product can be applied to the following turfgrasses when applied as directed:
- | | |
|--------------------------------|--------------------------------|
| Cool-Season Turfgrasses | Warm Season Turfgrasses |
| Creeping Bentgrass | Bahia grass |
| Fine Fescues | Bermudagrass |
| Kentucky Bluegrass | Buffalograss |
| Perennial Ryegrass | Carpetgrass |
| Tall Fescues | Centipedegrass |
| | St. Augustinegrass |
| | Zoysiagrass |

This product should be applied in the spring or fall prior to the establishment of weeds in established lawns and ornamental turfgrasses.

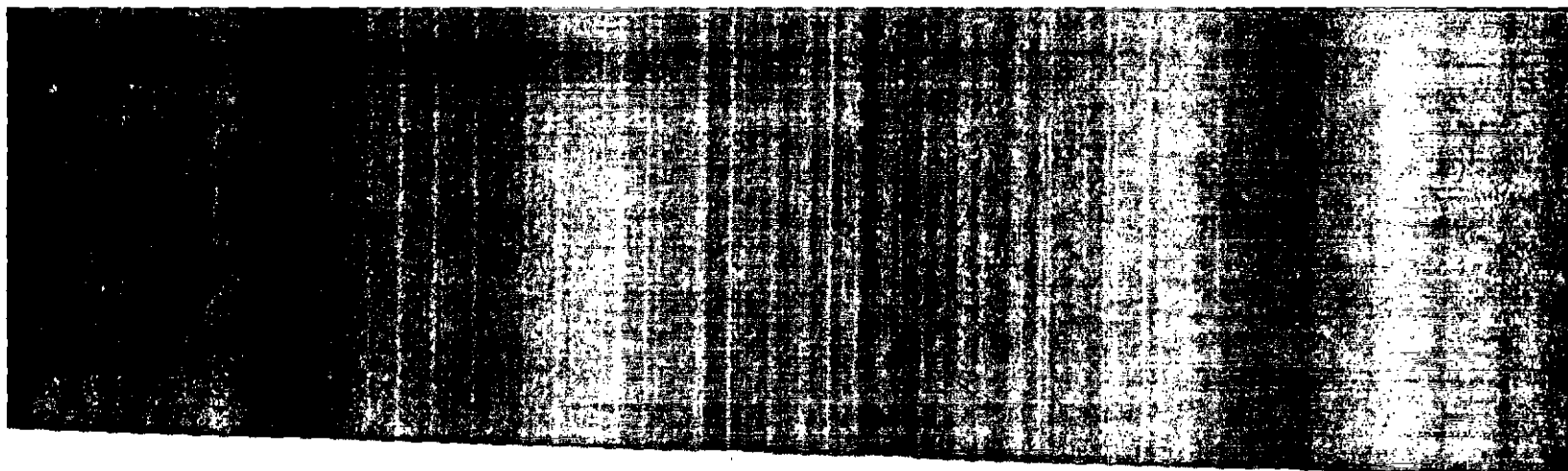
It can be applied up to 4 weeks longer than other crabgrass preventers and still provide season-long weed control. This is due to the Dimension® herbicide component of this combination product. It also provides both preventative (preemergence) control of crabgrass and other weeds when applied prior to their germination, and it also provides postemergence control of crabgrass. The postemergence control provided by this product is limited to crabgrass only and will provide control of crabgrass when applied up to 4 weeks after crabgrass germination. Application of this product later than 4 weeks after crabgrass germination will result in reduced control of crabgrass.

For control of other grass and broadleaf weeds, this product must be applied as a preventative treatment before their germination. Only crabgrass can be controlled with delayed applications after germination.

Tips for Improved Weed Control: For best results, apply this product within a few days after mowing and delay further mowings after the application until the lawn or ornamental turfgrass has been watered or received significant rainfall to dissolve the fertilizer granules. Improved weed control may be observed when treated lawn or ornamental turfgrass is watered or receives rainfall within a few days after application of this product.

EPA Reg. No. 8660-160 EPA Est. No. 8660-AP-1
 Net Weight 10.2 Pounds





00000
00000
00000
00000
00000

00000
00000
00000
00000
00000

2/2

ACCEPTED
MAR 31 1998
Under the Federal Insecticide, Fungicide, and Rodenticide Act, as amended, for the pesticide registered under EPA Reg. No. 8660-160