

Staplecotn

TOXAPHENE 6 E. C. Insecticide



Active Ingredients.

Toxaphene (chlorinated camphene containing 67% to 69% chlorine)	57.3%
Aromatic Petroleum Solvent	32.8%

Inert Ingredients 9.9%

(1 gal. contains 6 lbs. toxaphene)

WARNING!

KEEP OUT OF REACH OF CHILDREN
See Below For Other Warnings

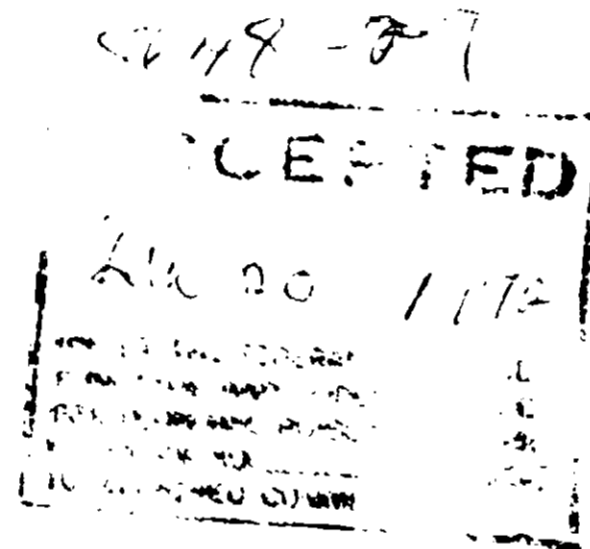
WARNING!

MAY BE FATAL IF SWALLOWED
Do not breathe spray mist
Do not get in eyes, on skin, on clothing
Do not use, pour, spill or store near heat or open flame
In case of contact, flush skin with plenty of water
Wash thoroughly after handling
Avoid contamination of feed and foodstuffs

Highly toxic to fish and wildlife. Do not contaminate any body of water nor apply to any area not specified on the label.

OBSERVE THE FOLLOWING USE PRECAUTIONS

Do not use on cucurbits (cantaloupe, cucumber, squash, melon) or young plants as injury may result.
Do not use this product on feed or forage to be fed to dairy animals or to livestock being finished for slaughter.
Do not apply or allow to drift to areas occupied by unprotected humans, beneficial animals or onto adjoining food or forage crops.
This product is toxic to fish and wildlife. Birds and other wildlife in treated areas may be killed. Keep out of any body of water. Do not apply where runoff is likely to occur. Do not apply when weather conditions favor drift from area treated. Do not contaminate water by cleaning of equipment, or disposal of wastes. Apply this product only as specified on this label.
To protect bees, do not apply when crops are in bloom. Remove or cover hives if spraying is necessary.
Apply in early morning or evening when there is little or no wind.
Consult local State Agricultural Experiment Station or State Extension Service Specialists for additional information, as the timing, number and rate of applications needed will vary with local conditions.



DIRECTIONS FOR USE

Application should be made only by experienced personnel using approved safety equipment. Apply when air is calm, using ground equipment or aircraft. Make thorough coverage of plants with a uniform deposit of spray. Treat at the first sign of infestation and repeat at regular intervals when needed to maintain control.

Aerial equipment: Use 2 to 5 gallons of water per acre. Ground equipment: Use 4 to 6 gallons per acre, consistent with crop growth.

Broccoli, Cauliflower, Cabbage, Brussels Sprouts: Cabbage Caterpillars, Cabbage Looper — 1 quart per acre in sufficient water to cover. Do not apply to Broccoli, Cauliflower and Brussels Sprouts after the edible parts start to form. Do not apply to cabbage after heads start to form.

Cotton: Cotton Boll Weevil, Cotton Bollworm, Armyworm, Fleahopper, Thrips, Leafworm, Grasshoppers - 1 2/3 quarts per acre. By airplane, apply in 2 to 5 gallons of water and by ground rig 4 to 6 gallons of water per acre. Early application for control of Thrips and Fleahoppers only: Use 2/3 quart per acre in sufficient water to cover, depending on method of application. Do not graze dairy animals or animals being finished for slaughter in fields treated late in the season.

Peppers: Cutworms - 2 qts. per acre in water to cover. Do not apply within 5 days of harvest.

DISPOSAL OF DRUMS: Drain drum completely. Add 5 gallons of water, 1 cup of detergent and 2 pounds of lye. Tighten bungs. Rotate Drum to wet all surfaces and let stand for at least 15 minutes. Drain completely and rinse several times with water. Tighten bungs. Transport to a professional drum reconditioner having burning equipment for reconditioning. Seller makes no warranty, expressed or implied, concerning the use of this product other than indicated on the label. Buyer assumes all risk of use and/or handling of this material when such use and/or handling is contrary to label instructions.

SOLD BY:

**STAPLE COTTON SERVICES ASSOCIATION A.A.L.
FARM CHEMICALS DIVISION
GREENWOOD, MISSISSIPPI**

E 6 E. C.
icide



hence...
5.3%
3.8%
6.9%

S. Example

DIRECTIONS FOR USE

Application should be made only by experienced persons using the appropriate safety equipment. Apply when air is calm. Use the minimum equipment for the craft. Make thorough coverage of plant with a uniform deposit of spray. Treat at the first sign of infestation and repeat at regular intervals when needed to maintain control.

Aerial equipment: Use 2 to 3 gallons of water per acre. Ground equipment: Use 4 to 6 gallons per acre, consistent with crop and soil.

Broccoli, Cauliflower, Cabbage, Brussels Sprouts: Use 1 to 2 quarts per acre in sufficient water to make a 100 to 200 ppm solution. For Cabbage and Brussels Sprouts, apply to the entire plant, starting at the base and working up to the top.

Cotton: Use 1 to 2 quarts per acre in sufficient water to make a 100 to 200 ppm solution. Apply to the entire plant, starting at the base and working up to the top. Repeat applications as needed to maintain control.

Peppers: Use 1 to 2 quarts per acre in sufficient water to make a 100 to 200 ppm solution. Apply to the entire plant, starting at the base and working up to the top.

DISPOSAL OF REMAINING PESTICIDE: Do not mix with other pesticides. Do not pour down the drain or into the water supply. Do not dump on the ground. Dispose of the remaining pesticide in accordance with the instructions on the label.

STAPLE COTTON SERVICES ASSOCIATION A. A. L.
FARM CHEMICALS DIVISION
GREENWOOD, MISSISSIPPI

