 **POISON**  
 See antidote statement  
 and other precautions  
 on side panel  
**DANGER**  
 Keep out of reach  
 of children.

NET CONTENTS 5 LBS.

# Swimrite

## Floating *disposable* Chlorinator

**95%**  
 ACTIVE  
 INGREDIENTS  
 (Trichloro-s triazinetrine)  
 INERT  
 INGREDIENTS  
**5%**



EPA Reg. No.

AC 1000

9-15-72  
 INCREASE THE... SIDE  
 POTENTIAL AND... ACT  
 FOR ECONOMIC... REGISTER-  
 ED UNDER NO. 8597-2

**APPROXIMATE Sizing Chart**  
**Pools (7'-9' Deep)**

POOL SIZE	GALLONS	HOLES REQ'D. PER SIDE	OZ. PER DAY
11' x 22'	10,000	2	1 3/4
14' x 28'	15,000	3	2 1/4
16' x 32'	20,000	4	3
17' x 34'	25,000	5	4
18' x 36'	30,000	6	5
20' x 40'	35,000	7	6
22' x 44'	40,000	8	7

**DIRECTIONS FOR USE — READ ALL DIRECTIONS CAREFULLY BEFORE USING CHLORINATOR**

1. Add enough Swimrite Conditioner to bring up to 25 ppm level of Cyanuric Acid.
2. Adjust pool water pH to 7.2 to 7.8.
3. Determine pool gallonage from sizing chart.
4. The chlorinator is marked 10,000 for a 10,000 gallon pool, on up to 40,000 for a 40,000 gallon pool.  
 These are approximate marking only and are to be used for reference. Every pool requires different amounts of chlorine to maintain a proper balance of 1.0 ppm to 1.5 ppm chlorine.
5. Use a sharp knife and cut the blisters off at the point closest to your pool gallonage, down the end where the red cap is located. Cut same number of holes on opposite side.
6. Place small end of chlorinator in pool first. The large end will entrap air and allow unit to float on pool surface. (Do not remove red cap.)
7. Check chlorine residual daily. Maintain a chlorine residual of 1.0 to 1.5 ppm at all times. If residual

Swimrite Dry Chlorine Concentrate should be used for this treatment.

1/2 to 8 ounces is enough to super chlorinate the average pool.  
 Do not attempt to refill or mix chemicals in this container. When desirable floating Chlorinator may be removed from pool. Allow all water to drain from container, and set large end on pool deck or flat surface.

**WINTERIZING:** When pool is not heated during cold weather, a 1.0 ppm residual can be maintained by cutting approximately half the holes used for summer chlorination.

**DANGER — HARMFUL IF SWALLOWED**

**ANTIDOTE:** Internally — feed gruel or cooked cereal followed by olive oil or cooking oil. Externally, or in the eyes — immediately flood with cold water. CALL A PHYSICIAN AT ONCE.



# Swimrite

Floating *disposable* Chlorinator



EPA Reg. No. 8597-2

REMOVE AND SAVE THIS LABEL  
FOR FUTURE REFERENCE  
BEFORE PLACING IN POOL.

AC...  
9-15-72  
UNDER THE...  
FOR ECONOMIC...  
REGISTERED  
UNDER NO. 8597-2

### DIRECTIONS FOR USE — READ ALL DIRECTIONS CAREFULLY BEFORE USING CHLORINATOR

1. Add enough Swimrite Conditioner to bring up to 25 ppm level of Cyanuric Acid.
2. Adjust pool water pH to 7.2 to 7.8.
3. Determine pool gallonage from sizing chart.
4. The chlorinator is marked 10,000 for a 10,000 gallon pool, on up to 40,000 for a 40,000 gallon pool.  
These are approximate marking only and are to be used for reference. Every pool requires different amounts of chlorine to maintain a proper balance of 1.0 ppm to 1.5 ppm chlorine.
5. Use a sharp knife and cut the blisters off at the point closest to your pool gallonage, down the end where the red cap is located. Cut same number of holes on opposite side.
6. Place small end of chlorinator in pool first. The large end will entrap air and allow unit to float on pool surface. (Do not remove red cap.)
7. Check chlorine residual daily. Maintain a chlorine residual of 1.0 to 1.5 ppm at all times. If residual

Swimrite Dry Chlorine Concentrate should be used for this treatment.  
4 to 8 ounces is enough to super chlorinate the average pool.  
Do not attempt to refill or mix chemicals in this container. When desirable floating Chlorinator may be removed from pool. Allow all water to drain from container, and set large end on pool deck or flat surface.  
**WINTERIZING:** When pool is not heated during cold weather, a 1.0 ppm residual can be maintained by cutting approximately half the holes used for summer chlorination.  
**ANTIDOTE:** Internally — feed gruel or cooked cereal followed by olive oil or cooking oil. Externally, or in the eyes — immediately flood with cold water. CALL A PHYSICIAN AT ONCE.  
HANDLE...  
Do not allow to come in contact with acids, combustible or oxidizable

**POISON**  
 See antidote statement  
 and other precautions  
 on side panel  
**DANGER**  
 Keep out of reach  
 of children.

NET CONTENTS 5 LBS.

# Swimrite

Floating *disposable* Chlorinator

**95%**  
 ACTIVE  
 INGREDIENTS  
(Trichloro s triazinetrione)  
 INERT  
 INGREDIENTS  
**5%**



EPA Reg. No.

ACCEPTED

9-15-72

INDUSTRY TRADE ASSOCIATION OF AMERICA  
 FURNISHES A REGISTERED TRADE ACT  
 FOR EQUIPMENT UNDER NO. 8597-2

**APPROXIMATE Sizing Chart**

Pools (7'-9' Deep)		HOLES REQ'D.	OZ. PER DAY
POOL SIZE	GALLONS	PER SIDE	
11' x 22'	10,000	2	1 3/4
14' x 28'	15,000	3	2 1/4
16' x 32'	20,000	4	3
17' x 34'	25,000	5	4
18' x 36'	30,000	6	5
20' x 40'	35,000	7	6
22' x 44'	40,000	8	7

Use Test Kit to Adjust Residual of 1.0 to 1.5 ppm

**SWIMRITE, INC.**  
 15330 Oxnard Street  
 Van Nuys, California

**DIRECTIONS FOR USE — READ ALL DIRECTIONS CAREFULLY BEFORE USING CHLORINATOR**

1. Add enough Swimrite Conditioner to bring up to 25 ppm level of Cyanuric Acid.
2. Adjust pool water pH to 7.2 to 7.8.
3. Determine pool gallonage from sizing chart.
4. The chlorinator is marked 10,000 for a 10,000 gallon pool, on up to 40,000 for a 40,000 gallon pool.  
 These are approximate marking only and are to be used for reference. Every pool requires different amounts of chlorine to maintain a proper balance of 1.0 ppm to 1.5 ppm chlorine.
5. Use a sharp knife and cut the blisters off at the point closest to your pool gallonage, down the end where the red cap is located. Cut same number of holes on opposite side.
6. Place small end of chlorinator in pool first. The large end will entrap air and allow unit to float on pool surface. (Do not remove red cap.)
7. Check chlorine residual daily. Maintain a chlorine residual of 1.0 to 1.5 ppm at all times. If residual is not high enough, cut off one additional blister until residual of 1.0 to 1.5 ppm is obtained, as determined by the use of a chlorine test kit.
8. Replace chlorinator when the tablets have been used up or are insufficient to maintain proper residual.
9. In heavy swimming periods it is recommended you super chlorinate the pool every 2 or 3 weeks.

Swimrite Dry Chlorine Concentrate should be used for this treatment.

4 to 8 ounces is enough to super chlorinate the average pool. Do not attempt to refill or mix chemicals in this container. When desirable floating Chlorinator may be removed from pool. Allow all water to drain from container, and set large end on pool deck or flat surface.

**WINTERIZING:** When pool is not heated during cold weather, a 1.0 ppm residual can be maintained by cutting approximately half the holes used for summer chlorination.

**ANTIDOTE:** Internally — feed gruel or cooked cereal followed by olive oil or cooking oil. Externally, or in the eyes — immediately flood with cold water. CALL A PHYSICIAN AT ONCE.

Strong oxidizing agent. Do not allow to come in contact with acids, combustible or oxidizable materials. Contamination from any source, may cause fire and release toxic gases. Mix, only with water as directed. Do not get in eyes or on skin. Keep closed when not in use, and store in cool, dry place. Destroy or safely dispose of empty container. Never reuse or refill.

## Add Directly To Pool Water

**Swimrite California Chlor-Rite®** helps you have a sanitary pool in the easiest possible way. It maintains a long disinfectant life and it is extremely simple to handle and economical to use. While taking up practically no space, it maintains high strength regardless of storage time.

After your pool water has been conditioned and stabilized, you add only 3 oz. per 20,000 gallons of water per day for chlorination.

### IMPORTANT:

1. When mixing with water, always add chemical slowly to water. Never add water to the chemical.
2. Do not mix more than one chemical together.
3. Do not mix stronger than 3% solution.

### DIRECTIONS FOR USE

#### CONDITIONING A NEWLY-FILLED POOL:

For most effective and economical results, filter the pool continuously according to the recommendations of the filter manufacturer. Test pool for pH. Adjust pH to 7.4-7.6 gradually, using soda ash to raise pH and sodium bisulfate or muriatic acid to lower pH. Superchlorinate by adding Swimrite California Chlor-Rite® at the rate of 40 ounces per each 20,000 gal. of water (approx. 10 parts per million (ppm) available chlorine). It is best to do this in the evening. Next morning, add Swimrite Conditioner directly to the pool at the rate of 5 lbs. per 20,000 gal. (This is equal to 30 ppm of stabilizer.) Re-adjust pH to 7.4-7.6. Bathers should not enter the pool until the above steps are completed and the available chlorine residual, as determined by the Swimrite 1-2-3-4 Test Kit, has dropped below 2.0 ppm.

### NORMAL DAILY USE:

After the pool has been conditioned use 3 oz. of Swimrite California Chlor-Rite® per 20,000 gal. per day. Check daily for the proper available chlorine residual of 1.0 to 1.5 ppm, with the Test Kit, and if needed change the daily dose in increments of 1/10 of the recommended dose until the proper chlorine residual is maintained.

### VARIATIONS IN DAILY USE:

On exceptionally hot days, with heavy bathing traffic, or heavy rains, it may be necessary to repeat the daily dosage to maintain the residual chlorine level of 1.0 to 1.5 ppm. 2 oz. of Swimrite California Chlor-Rite® per 20,000 gal. will increase the chlorine residual by about 0.5 ppm. Signs of algae or cloudy water may indicate a need for more chlorination. Also keep a close check on the pH of the water and maintain a constant 7.4 pH for greatest effectiveness of Swimrite California Chlor-Rite.®

### SUPERCHLORINATION:

A good precaution is to superchlorinate once each week in hot weather (above 80°F) and once every other week in cool weather (below 80°F), in the evening. Turn off the filter pump for the next 8-10 hours and allow no bathers in the pool. Add 5 to 10 times the daily dose of Swimrite California Chlor-Rite.® This is equal to about 5 to 10 ppm available chlorine. In the morning, vacuum clean the pool. Do not allow bathers in the pool until the available chlorine residual falls below 2.0 ppm.

**DO NOT  
VINYL**

**DANGER: K**  
See First Aid Statement /

USA-Reg-No. 667

**Swimrite**

CF-100  
**Pool Chlorine Concentrate**

for diamond-clear pool water

**DANGER** Keep out of reach of children

**ACTIVE INGREDIENTS**  
**INERT INGREDIENTS**

Swimrite Inc./15330 Oxnard Street/Van Nuys, California • Net Content 8 lbs.

**WARNING - HARMFUL**

**NOTE**

**CAUTION**

**AVAILABILITY**

**NET CONTENT**

**REGISTRATION**

**USE**

**STORAGE**

**DISPOSITION**

**OTHER INFORMATION**

**FOR FURTHER INFORMATION**

**CONTACT**

**YOUR DEALER**

**OR**

**CALL**

**1-800-368-3683**

**FOR A FREE CATALOG**

**AND PRODUCT INFORMATION**

**PLEASE REFER TO**

**SECTION 10 OF THIS LABEL**

**FOR FURTHER INFORMATION**

**AND PRECAUTIONS**

**FOR THE PROPER USE**

**OF THIS PRODUCT**

**AND TO AVOID**

**ACCIDENTAL INHALATION**

**OR CONTACT WITH**

**SKIN OR CLOTHING**

**PLEASE READ THE LABEL**

**CAREFULLY**

**BEFORE USING**

**THIS PRODUCT**

**AND FOLLOW ALL**

**PRECAUTIONS**

**AND DIRECTIONS**

**FOR USE**

**AND STORAGE**

**AND DISPOSAL**

**INSTRUCTIONS**

**AND PRECAUTIONS**

**FOR THE PROPER USE**

**OF THIS PRODUCT**

**AND TO AVOID**

**ACCIDENTAL INHALATION**

**POISON**  
See antidote statement  
and other precautions  
on side panel  
**DANGER**  
Keep out of reach  
of children.

NET CONTENTS 5 LBS.

# Swimrite

## Floating *disposable* Chlorinator

**95%**  
ACTIVE  
INGREDIENTS  
*Trichloro-s-triazinone*  
INERT  
INGREDIENTS  
**5%**



EPA Reg. No. 85

1968  
Monsant  
REGISTERED  
EPA UNDER RU 100-1-1

**APPROXIMATE Sizing Chart**  
Pools (7'-8' Deep)

POOL SIZE	GALLONS	HOLES REQ'D PER SIDE	OZ PER DAY
11 x 22	10,000	2	1 1/2
14 x 26	15,000	3	2 1/2
16 x 32	20,000	4	3 1/2
17 x 34	25,000	5	4 1/2
18 x 36	30,000	6	5 1/2
20 x 40	35,000	7	6 1/2
22 x 44	40,000	8	7 1/2

**SWIMRITE, INC.**  
15376 Grand Street  
Van Nuys, California

**DIRECTIONS FOR USE READ ALL DIRECTIONS CAREFULLY BEFORE USING CHLORINATOR**

1. Add enough tablets to the chlorinator to float in the pool. The amount of tablets to use is determined by the size of the pool and the amount of chlorine required. See the Sizing Chart for details.

2. Determine the amount of chlorine required for the pool. The amount of chlorine required is determined by the size of the pool and the amount of chlorine required. See the Sizing Chart for details.

3. The chlorinator should be placed in the pool in a shaded area. The chlorinator should be placed in the pool in a shaded area. The chlorinator should be placed in the pool in a shaded area.

4. The chlorinator should be placed in the pool in a shaded area. The chlorinator should be placed in the pool in a shaded area. The chlorinator should be placed in the pool in a shaded area.

5. The chlorinator should be placed in the pool in a shaded area. The chlorinator should be placed in the pool in a shaded area. The chlorinator should be placed in the pool in a shaded area.

6. The chlorinator should be placed in the pool in a shaded area. The chlorinator should be placed in the pool in a shaded area. The chlorinator should be placed in the pool in a shaded area.

7. The chlorinator should be placed in the pool in a shaded area. The chlorinator should be placed in the pool in a shaded area. The chlorinator should be placed in the pool in a shaded area.

8. The chlorinator should be placed in the pool in a shaded area. The chlorinator should be placed in the pool in a shaded area. The chlorinator should be placed in the pool in a shaded area.

9. The chlorinator should be placed in the pool in a shaded area. The chlorinator should be placed in the pool in a shaded area. The chlorinator should be placed in the pool in a shaded area.

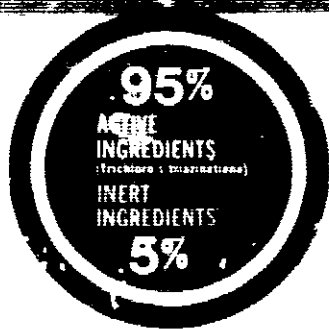
10. The chlorinator should be placed in the pool in a shaded area. The chlorinator should be placed in the pool in a shaded area. The chlorinator should be placed in the pool in a shaded area.

**WINTERIZING:** When the pool is to be winterized, the chlorinator should be placed in the pool in a shaded area. The chlorinator should be placed in the pool in a shaded area. The chlorinator should be placed in the pool in a shaded area.

**ANTIBIOTIC:** The chlorinator should be placed in the pool in a shaded area. The chlorinator should be placed in the pool in a shaded area. The chlorinator should be placed in the pool in a shaded area.

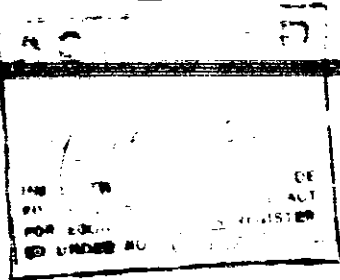
# Swimrite

floating *disposable* Chlorinator



EPA Reg. No. 8157

REMOVE AND SAVE THIS LABEL  
FOR FUTURE REFERENCE  
BEFORE PLACING IN POOL



### DIRECTIONS FOR USE -- READ ALL DIRECTIONS CAREFULLY BEFORE USING CHLORINATOR

Conditioner to bring up to 25 ppm level of calcium. Add  
to 7.2 to 7.8  
range from sizing chart  
marked 10,000 for a 10,000 gallon pool. (Sizing chart is  
on marking only and are to be used for reference. Every pool should be tested  
to maintain a proper balance of 1.0 ppm to 1.5 ppm chlorine  
and cut the blisters off at the point closest to your pool. If the  
cap is located. Cut same number of holes on opposite side.  
chlorinator in pool first. The large end will enter and a small end will  
not remove and cap.  
daily. Maintain a chlorine residual of 1.0 to 1.5 ppm at all times. Add  
cut off one additional blister on each side of the cap. If you are using  
use of a chlorine test kit.  
when the tablets have been used up or are insufficient to maintain  
periods it is recommended you superchlorinate the pool water.

WATERIZING When you are winterizing your pool, you should use  
ANTIGUET When you are winterizing your pool, you should use  
ANTIGUET When you are winterizing your pool, you should use