

Reg # 8590-598

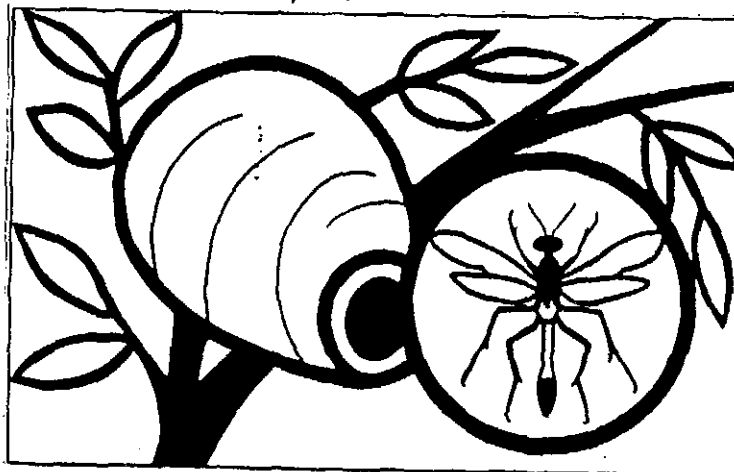
PM-10

1981

AGWAY.

PRESSURIZED SPRAY INSECTICIDE 0.25%

A Synthetic Pyrethroid Insecticide for Controlling the Following Flying and Crawling Insects: Wasps, Hornets, Yellow Jackets, Bees, Ants, Cockroaches, Spiders, Earwigs, Grain Mites, Sowbugs, Crickets, Beetles, Silverfish, Centipedes, and Millipedes.



Jet Stream up to 12 foot range.

Dielectric Strength - Non-conducting up to 26,500 volts.

**KEEP OUT
OF REACH
OF CHILDREN**

CAUTION

See side panel for additional precautionary statements

Net Contents 14 oz. (.414 liter)

ACTIVE INGREDIENTS

Resmethrin [(S-phenylmethyl)-3-turanyl] methyl 2, 2-dimethyl-3-(2-methyl-1-propenyl) cyclopropanecarboxylate	0.250% w/w
Related compounds	3.034%
INERT INGREDIENTS	99.716%
TOTAL	100.000% w/w

Cis/trans isomers ratio= max. 30% (±) cis and min. 70% (±) trans.

U.S. Patent Nos. 3,465,007 and 3,542,928.

Contains Petroleum Distillates.

SKU# 85-208

PRECAUTIONARY STATEMENTS HAZARDS TO HUMANS

CAUTION: Harmful if swallowed or absorbed through skin. Avoid breathing vapors or spray mist. Avoid contact with skin and eyes. In case of contact, immediately flush eyes or skin with plenty of water. Obtain medical attention if irritation persists. If swallowed, do not induce vomiting. Call a physician immediately.

Do not apply directly to food. In commercial food handling facilities, cover or remove any food and food processing equipment during application. Do not apply while food processing is underway. After space spraying in packing plants, bakeries, and other food processing plants, wash all equipment, benches, shelving, etc., where exposed food will be handled, with potable water. In the home, all food processing surfaces and utensils should be covered during treatment or thoroughly washed before use.

Remove pets and birds, and cover fish aquariums before spraying.

PHYSICAL AND CHEMICAL HAZARDS
Contents under pressure. Do not puncture. DO NOT USE OR STORE NEAR HEAT OR OPEN FLAME. Exposure to temperatures above 130°F may cause bursting. Never throw container into fire or incinerator.

DIRECTIONS FOR USE

It is a violation of Federal Law to use this product in a manner inconsistent with its labeling.

For use in and around hotels, motels, homes, greenhouses and lathouses, food handling establishments, packaging and processing plants, seed houses, commercial, industrial, office, institutional and storage buildings, milk handling areas of milk, cheese and ice cream plants, milk storage rooms, supermarkets, restaurants, bottling plants, canneries, flour and feed mills, bakeries, boats, ship cabins and hospitals. In hospitals, patients should be removed prior to treatment. Also for use in buses, automobiles, trucks, boxcars and ship cargo holds. Also for use in dog kennels and horse stables; in horse stables, not for application if horses will be used for food.

In food handling areas, food should be removed or covered previous to treatment. All food processing surfaces should be covered or thoroughly cleaned before using. Apply only when facility is not in operation.

STORAGE AND DISPOSAL

Store in a cool area away from heat or open flame. It is preferable that area be locked and out of the reach of children.

Do not reuse empty container. Wrap container and put in trash collection.

Remove protective cap. Aim spray opening away from person. Push button to spray.

For household and industrial use, indoors and around premises.

INDOORS: TO KILL WASPS, HORNETS, YELLOW JACKETS, BEES - Application should be made late in the evening when insects are resting. Spray liberally into hiding and breeding places, particularly under rafters, contacting as many insects as possible. Saturate areas in and around nest openings. Repeat as necessary.

TO KILL ANTS, COCKROACHES, SPIDERS, EARWIGS, GRAIN MITES, SOWBUGS, CRICKETS, BEETLES, SILVERFISH, CENTIPEDES AND MILLIPEDES - Direct spray to contact these insects in cracks and crevices in floors, baseboards, around pipes, behind cabinets, and other harborages. Spray these infested areas until thoroughly wet. Repeat as necessary.

TO KILL ANTS - Spray directly on insects, and around window frames, doors, and trails and hills.

TO KILL SPIDERS - Spray directly on these pests and repeat applications to the webbing and all cracks and crevices which harbor spiders.

OUTDOORS: Apply as a contact spray. Spray directly on insects. Aim spray opening away from person. Avoid spraying plants or turf except to spray infested areas.

ANTS: Same as directed above for indoor use.

WASPS, HORNETS, YELLOW JACKETS, BEES: Same as directed for indoor use. Aim spray at nest openings in trees, bushes, under eaves, chimneys, cracks, and crevices to saturate in and around the nest openings. Contact as many insects as possible. Repeat as necessary.

EARWIGS, SOWBUGS, CRICKETS, BEETLES, SILVERFISH, CENTIPEDES AND MILLIPEDES - Apply as a contact spray, as for indoor use.

NOTE: This pesticide is to be sold ONLY in this original unbroken package.

DISCLAIMER: Buyer assumes all risks of use, storage or handling not in strict accordance with directions given herewith.

AGWAY

Manufactured for:

Agway Inc.

PO Box 4741, Syracuse, NY 13221

EPA Reg. No. 8590-598

EPA Est. No. 5693-MA-1