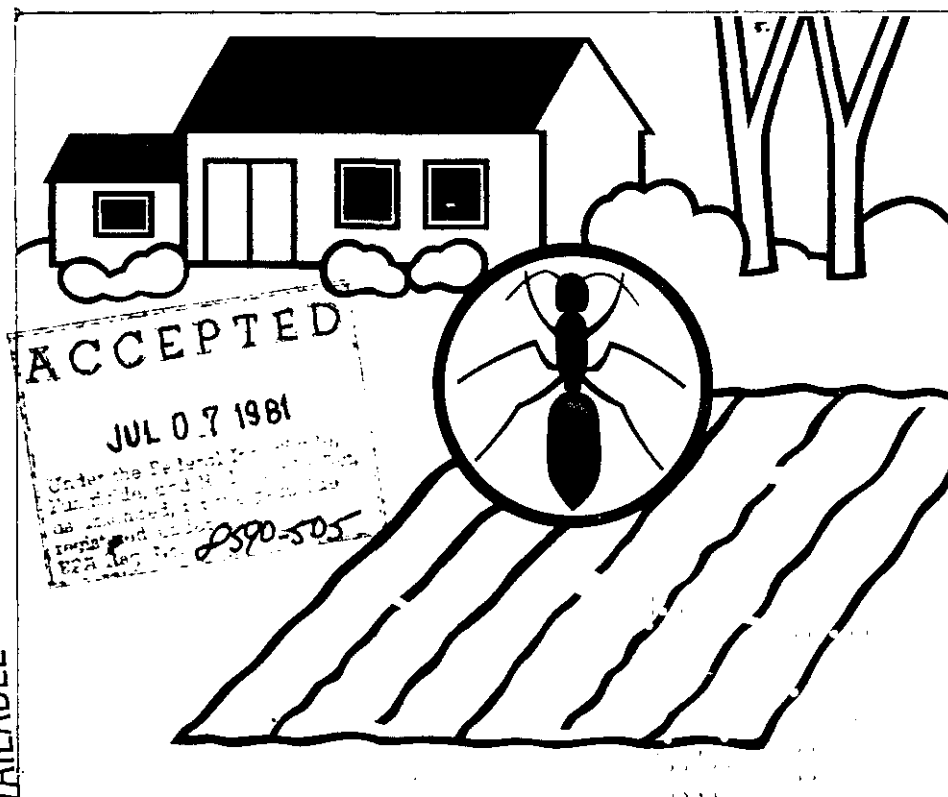


Agway Ant & Soil Insect Granules

Kills: Ants, armyworms, Billbugs, Brown dog ticks, chiggers, chinch bugs, clover mites, crickets, cutworms, earwigs, fleas, leafhoppers, Millipedes, sod webworms (lawn moths), sowbugs, springtails (Collembola) and white grubs of Japanese beetle, European Chafer and Southern Chafer.
Also kills garden insects as listed on back panel.



BEST DOCUMENT AVAILABLE

Ready-to-use. Contains 5% Diazinon* Insecticide.

ACTIVE INGREDIENTS

O,O-Diethyl O-(2-isopropyl-6-methyl-4-pyrimidinyl) phosphorothioate 5%

INERT INGREDIENTS 95%

TOTAL 100%

Diazinon* Trademark of Ciba-Geigy

KEEP OUT OF REACH OF CHILDREN

CAUTION:

See additional caution statements on back panel.

Net Wt. 1 lb. (.45 kg)

31

Also kills armyworms, carrot rust flies, corn borers, cutworms, mole crickets, onion maggots, root maggots, rootworms, vinegar flies and wireworms.

PRECAUTIONARY STATEMENTS

HAZARDS TO HUMANS & DOMESTIC ANIMALS

Caution: Harmful if swallowed. Avoid contamination of food and feed. Do not store near food or feed products. Avoid inhalation of dust. Avoid contact with skin, eyes and clothing. Wash thoroughly after handling and before eating or smoking. May be absorbed through skin. Keep children and pets off treated areas until this material is washed into the soil and grass is dry.

Statement of Practical Treatment

If swallowed — Drink one or two glasses of water and induce vomiting by touching the back of the throat with finger. Repeat until vomit fluid is clear. Call a physician immediately. Do not induce vomiting or give anything by mouth to an unconscious person.
If inhaled — Remove victim to fresh air. Apply respiration if indicated.
If on skin — Remove contaminated clothing and wash affected areas with soap and water.
If in eyes — Flush eyes for at least 15 minutes with water. Call a physician if irritation persists.

Environmental Hazards

This product is toxic to fish and wildlife. Birds feeding on treated areas may be killed. Keep out of lakes, streams, or ponds. Do not contaminate water by cleaning of equipment or disposal of wastes.

STORAGE & DISPOSAL

Do not reuse empty container. Wrap container and put in trash collection.

DIRECTIONS FOR USE

It is a violation of federal law to use this product in a manner inconsistent with its labeling.

Overall Lawn Application:

Controls the following lawn insects on both grass and dichondra lawns: Ants, armyworms, Billbugs, Brown dog ticks, chiggers, Chinch bugs, clover mites, crickets, cutworms, earwigs, fleas, leafhoppers, Millipedes, sod webworms (lawn moths), sowbugs, springtails (Collembola) and white grubs of Japanese beetle, European Chafer and Southern Chafer.

How to apply: For most insects, apply this product using a fertilizer spreader at the rate of 3.2 oz (1/4 cup) per 100 sq. ft. (an area 10' by 10') following the chart below. For heavier lawns, such as St. Augustine grass, apply the product at a rate of 5 oz (1 1/4 cups) per 100 sq. ft. For billbug and white grub control, apply the product at a rate of 4 oz (1 cup) per 100 sq. ft.

For best results, the lawn should be dry before application. To control surface feeding insects (armyworms, sodwebworms (lawn moths)) apply in late afternoon. Water lawn lightly after application. To control ants, billbugs, chinch bugs, cutworms and white grubs, water lawn thoroughly after application.

When to Apply:

Apply when insects are present. To control ants, armyworms, chinch bugs, cutworms, leafhoppers and sod webworms (lawn moths), apply at 4 to 6 week intervals.

To control white grubs, apply any time between July and early October. To control billbugs, apply when activity is first observed or when chewed or brown grass indicates damage from these insects. Repeat as necessary.

Spot Treatment:

Ants: Apply 1 teaspoon of Agway Ant and Soil Insect Granules over and around each ant hill.

Digger Wasps: Apply 1 teaspoon of Agway Ant and Soil Insect Granules in and around each nest opening. Apply at dusk when wasps are not active.

Band Treatment Around House Foundation:

The following pests are commonly found around or near foundations of houses as well as in lawns. Certain of these pests may enter houses.

Ants — Fleas
Brown dog ticks — Millipedes
Clover mites — Sowbugs (Pillbugs)
Crickets — Springtails
Earwigs — (Collembola)
Apply a 5-foot band of Agway Ant and Soil Insect Granules next to the house foundation. Distribute granules uniformly, using a rate of 3.2 oz (1/4 cup) for each 100 sq. ft. of area (5 by 20') treated. Repeat as necessary.

BROCCOLI, CABBAGE, CAULIFLOWER

Root Maggots: Apply 7 to 11 oz (1 1/4 to 2 1/4 cups) per 500 sq. ft. over entire seedbed before planting or transplanting and mix into soil to a depth of 3-4 inches.

CARROTS

Carrot Rust Flies: Apply 7 oz (1 1/4 cups) per 500 sq. ft. in seed furrow at planting time.

ONIONS

Onion Maggots: Apply 4 oz (1 cup) per 500 sq. ft. in seed furrow at planting time.

RADISHES

Root Maggots: Sprinkle lightly at the rate of 3-4 oz (1/4 to 1 cup) per 500 linear feet of row in seed furrow at planting time.

SWEET CORN

Corn Rootworms: Apply 4-7 oz (1 to 1 1/4 cups) per 500 sq. ft. in a band over the row at planting time.

Cutworms: Apply 7-11 oz (1 1/4 to 2 1/4 cups) per 500 sq. ft. Mix into soil to a depth of 1-2 inches for surface cutworms and 3-6 inches for subterranean cutworms.

European Corn Borers: Apply 4-7 oz (1 to 1 1/4 cups) per 500 sq. ft. over corn so granules fall into whorls when 75% of the plants show first-generation larvae feeding, and again 7 days later, if needed. Treat for second-generation when there is an average of 1 egg mass per plant.

Fall Armyworms: Apply 4-7 oz (1 to 1 1/4 cups) per 500 sq. ft. over corn so granules fall into whorls when larvae first appear, and again for control of second-generation armyworms, if necessary.

Southwestern Corn Borers: Apply 4-7 oz (1 to 1 1/4 cups) per 500 sq. ft. over corn so granules fall into whorls when second-generation larvae first appear. Repeat application one week later.

***Note:** Corn may be picked immediately following last application. Do not feed fodder to livestock for ten days following last application.

Wireworms: Apply 7-15 oz (1 1/4 to 4 cups) per 500 sq. ft. in a broadcast application. Mix into soil to a depth of 4-8 inches.

TOMATOES

Vinegar Flies (Drosophila spp.): Apply 4 oz (1 cup) per 500 sq. ft. over top of plants when flies first appear. Repeat 7-10 day intervals, or as required. Tomatoes may be picked the same day.

TURNIPS

Root Maggots: Apply 4 oz (1 cup) per 500 sq. ft. in seed furrow at planting time.

DISCLAIMER: Buyer assumes all risk of use, storage or handling not in strict accordance with directions given herewith.

NOTE: This pesticide is to be sold ONLY in this original unbroken package.

Garden Insect Control:

Agway Ant and Soil Insect Granules control certain garden insects on crops listed below. Apply just prior to planting and immediately mix thoroughly into soil to the specified depth, except where applied in seed furrow.

CUTWORMS (surface and subterranean)

Broccoli	Kale	Snap Beans
Cabbage	Lettuce	Spinach
Cantaloupes	Lima Beans	Summer
Cauliflower	Muskmelons	Squash
Celery	Parsley	Swiss Chard
Collards	Peas	Tomatoes
Cucumbers	Peppers	Watermelons
Endive	Potatoes	Winter Squash
(Escarole)		

Apply 7 to 14 oz (1 1/4 to 3 1/4 cups) per 500 sq. ft. and mix into soil to a depth of 2-3 inches for surface cutworms and 3-6 inches for subterranean cutworms. For potatoes, mix into soil 4-6 inches deep.

MOLE CRICKETS

Broccoli	Endive	Peppers
Cabbage	(Escarole)	Radishes
Cauliflower	Kale	Strawberries
Collards	Lettuce	Tomatoes
	Mustard	Turnips

Apply 4 oz (1 cup) per 500 sq. ft. and mix into soil to a depth of 1-2 inches.

WIREWORMS

Broccoli	Endive	Peppers
Cabbage	(Escarole)	Snap Beans
Cantaloupes	Kale	Spinach
Carrots	Lettuce	Summer
Cauliflower	Lima Beans	Squash
Celery	Muskmelons	Swiss Chard
Collards	Onions	Tomatoes
Corn	Parsley	Watermelons
Cucumbers	Peas	Winter Squash

Apply 7 to 14 oz (1 1/4 to 3 1/4 cups) per 500 sq. ft. and mix into soil to a depth of 4 to 8 inches.

3.2 oz/100 sq. ft.	4 oz/100 sq. ft.	5 oz/100 sq. ft.
1 lb. can treats 500 sq. ft.	1 lb. can treats 400 sq. ft.	1 lb. can treats 320 sq. ft.
3 lb. can treats 1500 sq. ft.	3 lb. can treats 1200 sq. ft.	3 lb. can treats 960 sq. ft.

Drop Spreader

Scott's

Spinner Type

Scott's

Cyclone

Ortho

E

6.5

6.0

8.0

D

6.0

5.5

7.5

C

5.5

5.0

7.0



Agway Inc.
Chemical Division
Box 4933 Syracuse NY 13221

EPA Reg. No. 8590-505
EPA Est. No. 8590-PA-1