

AGWAY HOME INSECT PEST CONTROL

Kills: roaches, ants, crickets, brown dog ticks, spiders, flies, sowbugs, mosquitoes, wasps & other insects . . . as specified in label directions.

OUTDOORS

Flies, Mosquitoes, Wasps, Flying Moths: For outdoor use only as an aid in reducing annoyance from these insects. Spray outside surfaces of screens doors, window frames or wherever these insects may enter.

Treat dark corners and localized resting areas, under eaves, on porches, around patios, and garages. Repeat as necessary. Also treat surfaces around light fixtures on porches, in garages, and other places where these insects alight or congregate.

Chiggers, Ants, Brown Dog Ticks, Clover Mites: For treatment of localized infestations of insects in outdoor areas where there is no vegetation to be used for food or feed, spray infested areas. For ants, wet hills and runways. Repeat as necessary.

Porches, Patios, Garages, and other areas around the house where insects hide and congregate: To help keep flies, mosquitoes, wasps, and flying moths from entering the house, treat outdoor areas where these insects congregate. This treatment can be an effective addition to total pest control.

Disclaimer: Buyer assumes all risks of use, storage or handling not in strict accordance with directions given herewith.

NOTE: This pesticide is to be sold ONLY in this original unbroken package.



Ready to use in and around the home. No unpleasant odor.

KEEP OUT OF REACH OF CHILDREN

CAUTION:

See back panel for additional cautions

**Net Contents
1/2 Gallon
(1.89 LITERS)**

Contains Diazinon*

ACTIVE INGREDIENTS	
0,0 dimethyl 0-(2-isopropyl-6-methyl-4-pyrimidinyl) phosphorothioate	0.500
Aromatic petroleum derivative solvent	98.920
INERT INGREDIENTS	0.580
TOTAL	100.000

Diazinon* trademark of CIBA GEIGY

PRECAUTIONARY STATEMENTS
HAZARDS TO HUMANS & DOMESTIC ANIMALS
CAUTION: Harmful if swallowed. Avoid contamination of feed and foodstuffs. Avoid inhalation and skin contact; wash thoroughly after using. Do not allow children in treated areas until surfaces are dry. Remove pets, birds and fish bowls before spraying.

STATEMENT OF PRACTICAL TREATMENT
If swallowed — Call a physician immediately. Gastric lavage is indicated if material was taken internally. Do not induce vomiting unless other treatment is not available. Vomiting may cause aspiration pneumonia. If it is necessary to induce vomiting, give victim one or two glasses of water and insert finger in back of the throat. Repeat until vomit fluid is clear. Do not induce vomiting or give anything by mouth to an unconscious person.

If inhaled — Remove victim to fresh air. Apply artificial respiration if indicated.

If on skin — Remove contaminated clothing and wash contaminated skin with soap and water.

If in eyes — Flush eyes with plenty of water for at least 15 minutes. Get medical attention immediately.

ENVIRONMENTAL HAZARDS
This product is toxic to fish, birds, and other wildlife. Birds feeding in treated areas may be killed. Keep out of lakes, streams, or ponds. Do not contaminate water by cleaning of equipment or disposal of wastes.

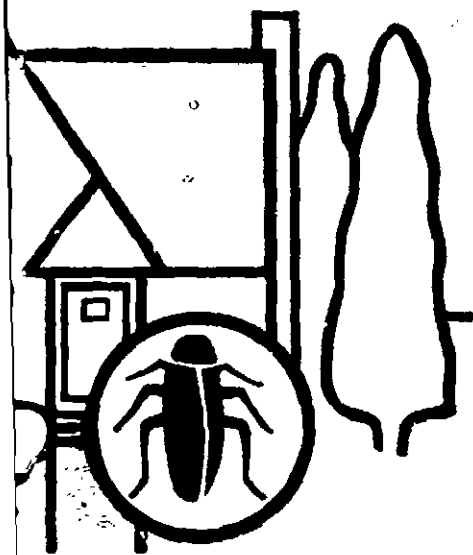
PHYSICAL & CHEMICAL HAZARDS
Do not use, pour, spill, or store near heat or open flame.

EPA Reg. No. 8590-1
EPA Est. No. 8590-1

37

HOME CONTROL

ants, brown dog ticks,
mosquitoes, wasps & other
pests. See label directions.



PRECAUTIONARY STATEMENTS
HAZARDS TO HUMANS & DOMESTIC ANIMALS
CAUTION: Harmful if swallowed. Avoid contamination of feed and foodstuffs. Avoid inhalation and skin contact; wash thoroughly after using. Do not allow children in treated areas until surfaces are dry. Remove pets, birds and fish bowls before spraying.

STATEMENT OF PRACTICAL TREATMENT
If swallowed — Call a physician immediately. Gastric lavage is indicated if material was taken internally. Do not induce vomiting unless other treatment is not available. Vomiting may cause aspiration pneumonia. If it is necessary to induce vomiting, give victim one or two glasses of water and insert finger in back of the throat. Repeat until vomit fluid is clear. Do not induce vomiting or give anything by mouth to an unconscious person.

If inhaled — Remove victim to fresh air. Apply artificial respiration if indicated.

If on skin — Remove contaminated clothing and wash contaminated skin with soap and water.

If in eyes — Flush eyes with plenty of water for at least 15 minutes. Get medical attention immediately.

ENVIRONMENTAL HAZARDS
This product is toxic to fish, birds, and other wildlife. Birds feeding in treated areas may be killed. Keep out of lakes, streams, or ponds. Do not contaminate water by cleaning of equipment or disposal of wastes.

PHYSICAL & CHEMICAL HAZARDS
Do not use, pour, spill, or store near heat or open flame.

EPA Reg. No. 8590-1
EPA Est. No. 8590-1

Application

Hold can upright and spray infested surfaces until wet. Do not use as a space spray. Do not spray on pets or desirable plants. Avoid excessive wetting of asphalt tile, rubber and plastic materials.

DIRECTIONS FOR USE

It is a violation of federal law to use this product in a manner inconsistent with its labeling.

STORAGE & DISPOSAL

Do not reuse empty container. Wrap container and put in trash collection.

Indoors*

Cockroaches (Waterbugs), Ants, Firebrats, Silverfish, Sowbugs (Pillbugs), Springtails, Spiders, Crickets, Earwigs: Spray until wet, surfaces behind and beneath cabinets, refrigerators, sinks, stoves, ant trails, and other localized areas infested with insects. Spray window and door frames where ants enter. Treat inaccessible areas, voids around water pipes, cracks and crevices along baseboard moldings. Repeat as necessary.

Carpet beetles: Make localized application to areas of the floor and baseboards. Spray directly into cracks and under carpets where insects may be found. Treat crevices, cracks and infested areas of shelving in closets. Repeat as necessary. Do not apply directly to carpets or floor coverings with rubber or foam backings as damage may occur.

Brown dog ticks: Spray infested areas around baseboards, window and door frames, wall cracks, sleeping quarters of pets, and localized areas of floors and floor coverings. Repeat as necessary. Fresh bedding should be placed in animal quarters after treatment. Do not treat animals. Do not apply directly to carpets or floor coverings with rubber or foam backings as damage may occur.

Spiders: Apply spray around windows, doors, and along baseboards. Make spot applications to other areas over which these pests may crawl.

Surfaces behind and beneath cabinets: Roaches, ants, silverfish—as a supplement to good housekeeping, spray surfaces behind and beneath cabinets where insects tend to hide. Spray until wet. Remove all food before spraying. Infested food packages should be destroyed.

*Do not use in edible products area of food processing plants, restaurants or other areas where food is commercially prepared or processed. Do not use in serving areas while food is exposed.



Agway Inc., Chemical Division
Box 4933, Syracuse, NY 13221

CGPL-IL35-068