

SPARKLEEN

ALGY-BAN

NET CONTENTS: 32 FL. OZ. (1 QT.)

FOR SWIMMING POOL ALGAE CONTROL

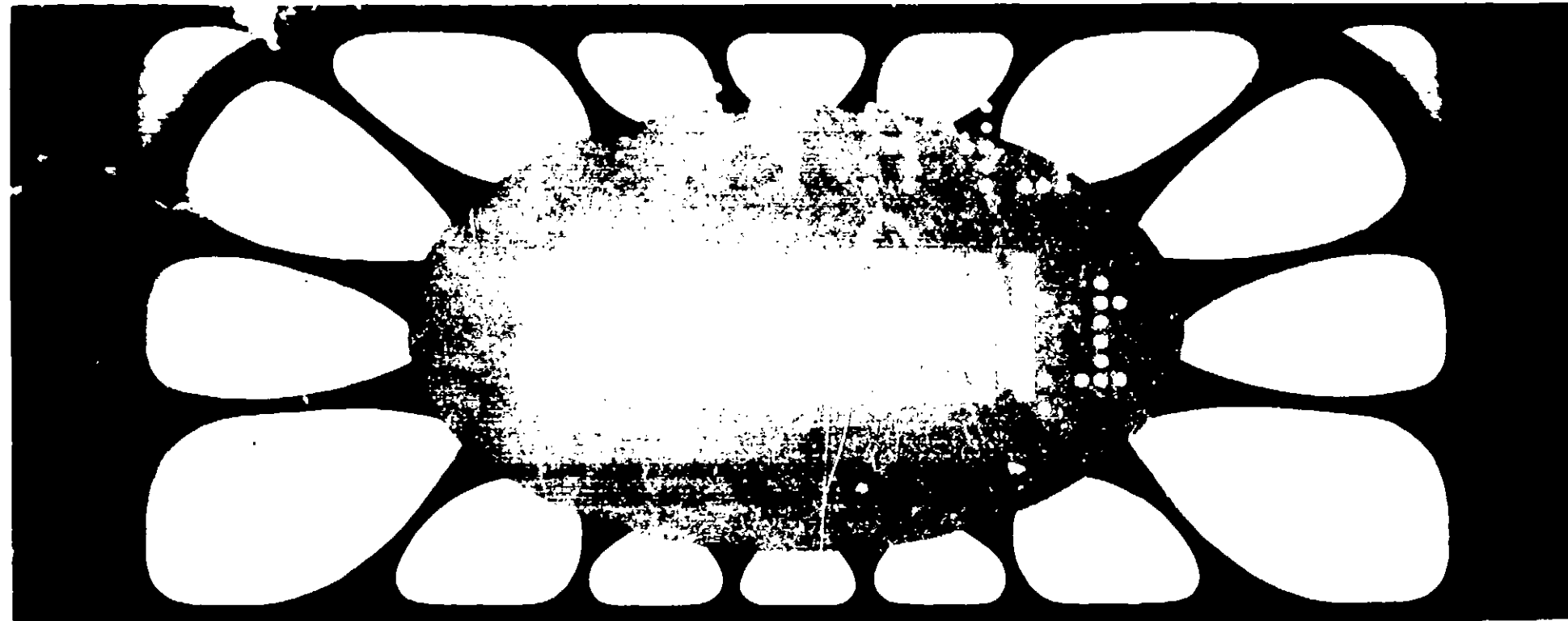
SEE ATTACHED

ACCEPTED
JAN 28, 1972
FEDERAL BUREAU OF INVESTIGATION
U.S. DEPARTMENT OF JUSTICE
8544-5

DANGER:

See First Aid and other precautions on back panel

13280 AMAR RD
CITY OF INDUSTRY, CA 91746



When algae are visible, the initial dose of 1 ounce per 50,000 gallons of water must be applied. If algae are not visible, such a dose must be applied weekly, or more frequently, if algae are visible. If algae are not visible, such a dose must be applied weekly, or more frequently, if algae are visible. If algae are not visible, such a dose must be applied weekly, or more frequently, if algae are visible.

ALGY-BAN

NET CONTENTS: 32 FL. OZ. (1 QT.)

ACTIVE INGREDIENTS

n-Alkyl (60% C ₁₄ , 30% C ₁₆ , 5% C ₁₂ , 5% C ₁₈) dimethyl benzyl ammonium chlorides	42%
n-Dialkyl (60% C ₁₄ , 30% C ₁₆ , 5% C ₁₂ , 5% C ₁₈) methyl benzyl ammonium chlorides	8%
INERT INGREDIENTS	50%

Keep out of reach of children.

WARNING: May cause skin irritation or damage to eyes. Harmful if swallowed. Avoid contact with skin and eyes.

USDA Reg. No. 8544-5

VALLEY CHLORINE SOLUTIONS CO.

ACCEPTED