

A 36 is a dry organic in the control of algae in recirculating cooling designed to allow the to stabilize the chlorine water.

OUT OF REACH OF CHILDREN

gent - May be fatal or produce severe chemical with eyes, skin, mucous se of contact, immedi- plenty of water for at obtain prompt medical

nk raw egg white, milk emetic (tablespoon of water or cooking oil).

with any other chemi- al solutions. Contact as paper, rags, paint eaners, soap products, or combustible materi- tion which in turn can of fire, douse liberally

container only where ble. Do not breathe in ter each use, re-close g material. Keep away

GARRATT-CALLAHAN FORMULA 36

WATER TREATMENT MICROBIOCID

Oxidizing Microbiocide for Building and Industrial Cooling Towers

EPA Reg. No. 8540-14

Active Ingredients:

Sodium dichloro-S- triazinetrione 25%

Inert Ingredients:

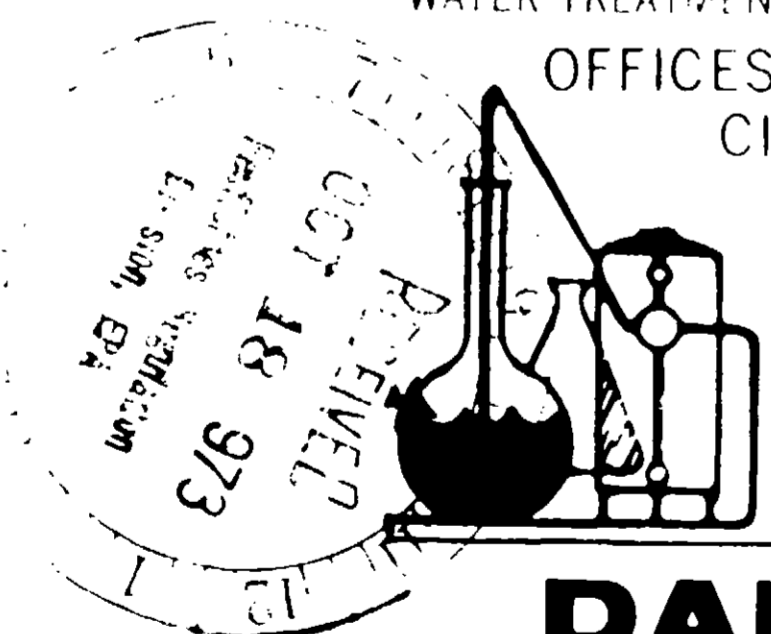
75%
100%

Contains approximately 16% by weight available chlorine.

GARRATT-CALLAHAN CO.
WATER TREATMENT ENGINEERS SINCE 1904

OFFICES IN PRINCIPAL CITIES AND STRATEGIC INDUSTRIAL AREAS

HOME OFFICE
111 ROLLINS RD.
MILLBRAE
CALIFORNIA 94030



DANGER

**KEEP OUT OF REACH OF CHILDREN.
SEE LEFT PANEL FOR ADDITIONAL
PRECAUTIONARY STATEMENTS.**

USE DIRECTIONS

To control algae and bacterial slimes, use **GARRATT-CALLAHAN FORMULA 36** as directed. For best results slug feed. The frequency of addition of microbiocide needed depends on many factors. To optimize your use of **GARRATT-CALLAHAN FORMULA 36**, follow this procedure.

FORMULA 36 should be added to the system water until a residual of approximately 1 ppm of chlorine is in the water. When no chlorine demand is present, the addition of 1 oz. by weight per 1,000 gallons of water will result in 1.2 ppm of chlorine. In actual use the amount needed will be greater due to the necessity of overcoming the initial chlorine demand.

It is suggested that an initial slug dose of 8 oz. per 1,000 gallons be slug fed into the basin or distributor of the tower. Repeat the dose every seven days or less until satisfactory results are obtained.

When this treatment is successful use slug-fed doses of 4 oz. per 1,000 gallons repeated weekly as needed. Should slime develop, increase dosage to 8 oz. per 1,000 gallons.

Should tower be heavily fouled a pre-cleaning is required.

For maximum effectiveness it is recommended that this product be alternated with a Garratt-Callahan non-oxidizing microbiocide. Let chlorine residual drop below 0.5 ppm before adding alternate microbiocide. At other times repeat maintenance dose to maintain residual of 1.0 ppm chlorine as determined by frequent use of a chlorine test kit.

This product is toxic to fish. Treated effluent should not be discharged where it will drain into lakes, streams, ponds or public water. Apply only as specified on this label.

Do not reuse empty drum. Return to drum reconditioner or rinse well with soap solution and discard. Do not contaminate water by disposal of waste.

9.73

UN
FD
FOR ECU
8544-1

POOL CHLORINE

DRY CONCENTRATE

DANGER: Keep out of reach of children.

POISON



WARNING: May be fatal if swallowed. Avoid contact with eyes and skin. Avoid breathing dust. Keep cover closed when not in use.

See Antidote Statement on Back Panel and/or Lid.

USDA Reg. No. 8544-1

NET WEIGHT: 10 POUNDS

GARRATT-CALLAHAN FORMULA 36 is a dry organic chlorine donor designed to aid in the control of algae and bacterial slimes found in recirculating cooling tower waters. It is chemically designed to allow the slow release of chlorine and to stabilize the chlorine and retard its escape from the water.

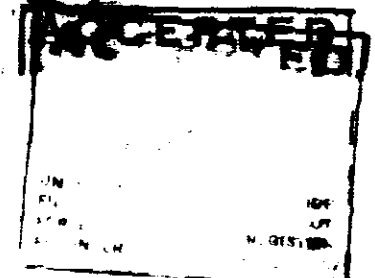
DANGER: KEEP OUT OF REACH OF CHILDREN

POISON - Strong oxidizing agent - May be fatal or harmful if swallowed. May produce severe chemical burns. Do not allow contact with eyes, skin, mucous membranes, or clothing. In case of contact, immediately flush skin or eyes with plenty of water for at least 15 minutes; for eyes, obtain prompt medical attention.

ANTIDOTE - If swallowed, drink raw egg white, milk or cooked cereal. Follow with emetic (tablespoon of mustard in a glass of warm water or cooking oil). Call a physician.

Mix only with water. Do not mix with any other chemicals or concentrated chemical solutions. Contact with oxidizable material such as paper, rags, paint products, vinegar, kerosene, cleaners, soap products, etc., or with acids or alkalis or combustible materials may cause fire or decomposition which in turn can release toxic gases. In case of fire, douse liberally with water.

Keep in cool, dry place. Open container only where adequate ventilation is available. Do not breathe in or inhale container vapors. After each use, re-close container to protect remaining material. Keep away from fire, heat or open flame.



GARRATT-CALLAHAN FORMULA 36
WATER TREATMENT MICROBIOCIDE

Oxidizing Microbiocide for Building and Industrial Cooling Towers
 EPA Reg. No. 8540-14

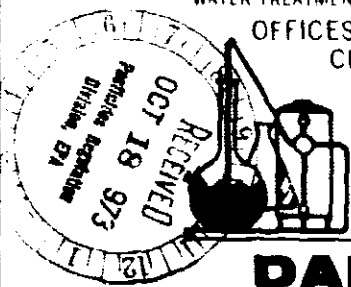
Active Ingredients:	
Sodium dichloro-S- triazinetrione	25%
Inert Ingredients:	75%
	100%

Contains approximately 16% by weight available chlorine.

GARRATT-CALLAHAN CO.
 WATER TREATMENT ENGINEERS SINCE 1964

OFFICES IN PRINCIPAL CITIES AND STRATEGIC INDUSTRIAL AREAS

HOME OFFICE
 111 ROLLINS RD.
 MILLBRAE
 CALIFORNIA 94030



DANGER
 KEEP OUT OF REACH OF CHILDREN.
 SEE LEFT PANEL FOR ADDITIONAL PRECAUTIONARY STATEMENTS.

USE DIRECTLY

To control algae and bacterial CALLAHAN FORMULA 36 as directed slug feed. The frequency of application needed depends on many factors. Use of GARRATT-CALLAHAN this procedure.

FORMULA 36 should be added until a residual of approximately 1.0 ppm is in the water. When no chlorine is in the water, the addition of 1 oz. per 1,000 gallons of water will result in 1.2 ppm of the amount needed will be greater. It is suggested that an initial 1,000 gallons be slug fed into the tower. Repeat the dose less until satisfactory results. When this treatment is successful, 4 oz. per 1,000 gallons repeat. Should slime develop, increase to 1,000 gallons.

Should tower be heavily fouled, required.

For maximum effectiveness, this product be alternated with non-oxidizing microbiocides. Drop below 0.5 ppm before biocide. At other times repeat maintain residual of 1.0 ppm by frequent use of a chlorine. This product is toxic to fish. Do not be discharged where streams, ponds or public water are used on this label.

Do not reuse empty drum. Rinse or rinse well with soap and water. Do not contaminate water by discharge.

FORMULA 36 is a dry organic acid in the control of algae used in recirculating cooling towers designed to allow the acid to stabilize the chlorine in the water.

KEEP OUT OF REACH OF CHILDREN

Strong agent - May be fatal or may produce severe chemical burns. In case of contact, immediately with plenty of water for at least 15 minutes. Obtain prompt medical attention.

Do not drink raw egg white, milk with emetic (tablespoon of warm water or cooking oil).

Do not mix with any other chemical solutions. Contact with such as paper, rags, paint, oil, cleaners, soap products, acids or combustible materials which in turn can cause of fire, douse liberally.


Open container only where available. Do not breathe in vapors. After each use, re-close remaining material. Keep away from heat.

GARRATT-CALLAHAN FORMULA 36 WATER TREATMENT MICROBIOCIDES

Oxidizing Microbiocide for Building
and Industrial Cooling Towers
EPA Reg. No. 8540-14

Active Ingredients:	
Sodium dichloro-S- triazinetrione	25%
Inert Ingredients:	75%
	100%

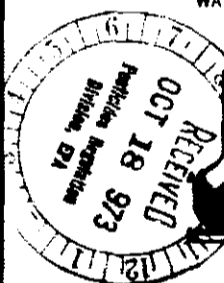
Contains approximately 16% by weight available chlorine.



GARRATT-CALLAHAN CO.
WATER TREATMENT ENGINEERS SINCE 1904

OFFICES IN PRINCIPAL
CITIES AND STRATEGIC
INDUSTRIAL AREAS

HOME OFFICE
111 ROLLINS RD.
MILLBRAE
CALIFORNIA 94030



DANGER

**KEEP OUT OF REACH OF CHILDREN.
SEE LEFT PANEL FOR ADDITIONAL
PRECAUTIONARY STATEMENTS.**

USE DIRECTIONS

To control algae and bacterial slimes, use GARRATT-CALLAHAN FORMULA 36 as directed. For best results slug feed. The frequency of addition of microbiocide needed depends on many factors. To optimize your use of GARRATT-CALLAHAN FORMULA 36, follow this procedure.

FORMULA 36 should be added to the system water until a residual of approximately 1 ppm of chlorine is in the water. When no chlorine demand is present, the addition of 1 oz. by weight per 1,000 gallons of water will result in 1.2 ppm of chlorine. In actual use the amount needed will be greater due to the necessity of overcoming the initial chlorine demand.

It is suggested that an initial slug dose of 8 oz. per 1,000 gallons be slug fed into the basin or distributor of the tower. Repeat the dose every seven days or less until satisfactory results are obtained.

When this treatment is successful use slug-fed doses of 4 oz. per 1,000 gallons repeated weekly as needed. Should slime develop, increase dosage to 8 oz. per 1,000 gallons.

Should tower be heavily fouled a pre-cleaning is required.

For maximum effectiveness it is recommended that this product be alternated with a Garratt-Callahan non-oxidizing microbiocide. Let chlorine residual drop below 0.5 ppm before adding alternate microbiocide. At other times repeat maintenance dose to maintain residual of 1.0 ppm chlorine as determined by frequent use of a chlorine test kit.

This product is toxic to fish. Treated effluent should not be discharged where it will drain into lakes, streams, ponds or public water. Apply only as specified on this label.

Do not reuse empty drum. Return to drum reconditioner or rinse well with soap solution and discard. Do not contaminate water by disposal of waste.

11

9/73