

WEED - FEED 10-3-4 - SILVER
& 2, 2-D

DUAL PURPOSE

WEEDS
FEEDS

SUGGESTED SPREADER SETTINGS

Spreader 1
Rate 1
Check 1

FOR BEST RESULTS

- Apply when weeds are young
- Apply at 10-3-4
- Apply when grass is damp
- Wait 24 hours for water or mow
- Feed grass with non-herbicide fertilizer for rest of season

CAUTION

- Avoid breathing dust
- Avoid contact with eyes or clothing
- Do not apply to bent grasses, clover lawns, St. Augustine grass or Dichondra
- Do not use on newly seeded lawns
- Avoid application to desirable plants (flowers, fruits, shrubs, trees, etc.)
- Avoid drift of dust or vapors which may injure susceptible plants in immediate vicinity. Do not apply on windy days.
- Do not store near fertilizers, seed, insecticides, or fungicides.
- This product is toxic to fish. Keep out of any body of water.
- Destroy empty bags by burying. Do not reuse container. Do not burn.
- Do not contaminate water by cleaning of equipment or disposal of wastes. Do not apply where runoff is likely to occur. Apply this product only as specified on this label.

NOTICE

IF NOT USED AS DIRECTED, SELLER MAKES NO WARRANTY, EXPRESSED OR IMPLIED, CONCERNING THE USE OF THIS PRODUCT. USER THEN ASSUMES ALL RISK OF LOSS OR DAMAGE ARISING FROM USE, HANDLING AND THE EFFECTS THEREOF.

MFG. BY
FREE FLOW FERTILIZER CO.
P.O. BOX 119 MUMFEE, OHIO 43037

GROWER

all



WEED SEED

PREMIUM LAYER

	MINIMUM
Total Nitrogen (%)	1.5
Available Phosphorus (P ₂ O ₅) (%)	0.5
Soluble Potash (K ₂ O) (%)	0.5
	GUARANTEED
Active Ingredients:	
Dimethylamine (DMA) (%)	1.0
Isobutyl Ester (%)	0.5
[2-(2,4,6-trinitrophenyl)ethylamine] (%)	0.5
Inert Ingredients	
2.5% Nitrogen	1.5
2.45% Phosphorus	0.5

1-A ...

Wadding

WEED & FEED 10-6-4 PLUS SILVEX & 2,4-D

DUAL PURPOSE

KILLS-Dandelion, chickweed, plantain, ground ivy, spurge, buckhorn, clover.

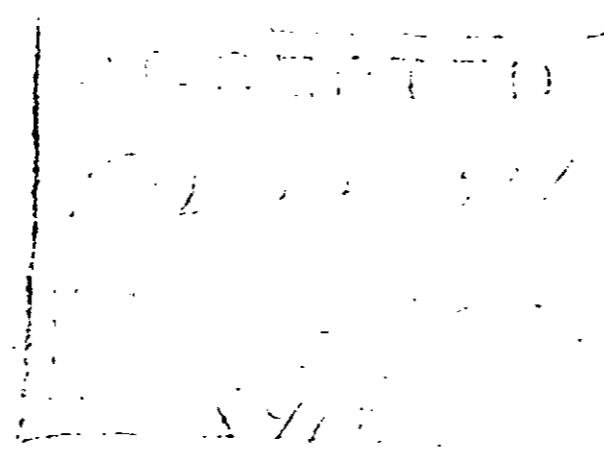
FEEDS-Contains proper nutrients to give lush growth while controlling weeds.

SUGGESTED SPREADER SETTINGS

Scott 5 Cyclone 4
Greenfield 6½ Jackson 5
Check your spreader for accuracy.

FOR BEST RESULTS

Apply spring or fall when weeds are growing.
Apply at warm temperature.
Apply when grass is damp.
Wait 24 hours to water or mow.
Feed grass with non-herbicide fertilizer for rest of season.



CAUTION

Avoid breathing dust.
Avoid contact with skin, eyes or clothing.
Do not apply to bent grasses, clover lawns, St. Augustine grass or Dichondra.
Do not use on newly seeded lawns.
Avoid application to desirable plants (flowers, fruits, shrubs, trees, etc.).
Avoid drift of dust or vapors which may injure susceptible plants in immediate vicinity. Do not apply on windy days.
Do not store near fertilizers, seed, insecticides, or fungicides.
This product is toxic to fish. Keep out of any body of water.
Destroy empty bags by burying. Do not reuse container. Do not burn.
Do not contaminate water by cleaning of equipment or disposal of wastes. Do not apply where runoff is likely to occur. Apply this product only as specified on this label.

NOTICE

IF NOT USED AS DIRECTED, SELLER MAKES NO WARRANTY, EXPRESSED OR IMPLIED, CONCERNING THE USE OF THIS PRODUCT. USER THEN ASSUMES ALL RISK OF LOSS OR DAMAGE ARISING FROM USE, HANDLING AND THE EFFECTS THEREOF.

MFG. BY
FREE FLOW FERTILIZER CO.
P. O. BOX 119 WINDYBEE, OHIO 43087