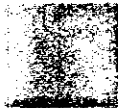


PMS 361



PMS 108

PMS 662



BLACK



Disinfectant Bissell® Bathroom Cleaner

SPRAY ON • WIPE OFF • CLEANS INSTANTLY

Cleans, Disinfects, Deodorizes tiles, chrome fixtures, exterior bowl surfaces, toilet seats, tubs, basin, vanity tops, garbage pails, painted walls, woodwork and boat hulls. Can be used as a general surface cleaner throughout the house. Prevents mold and mildew growth without rinsing. Shines without rubbing. Sprays hard to reach areas easily. Leaves no gritty residue. Does not scratch. Dissolves bathtub ring.

DIRECTIONS FOR USE

It is a violation of Federal Law to use this product in a manner inconsistent with its labeling.

1. Shake well before using.
2. Turn spray valve so arrow points to red dot.
3. Hold can upright or upside down 5 to 10 inches from surface to be cleaned. When spraying upside down and spray stops, spray upright for a few seconds, then spray upside down again.
4. Allow foam to soak dirt. Wipe off with a clean cloth or sponge. No rinse needed.
5. When using on chrome, rinse with water to obtain a bright shine.

FOR USE TO PREVENT MOLD AND MILDEW

1. Spray surface until moist.
2. Repeat application in 14 days to maintain control.
3. Boat hulls in dry dock only.

PRECAUTIONARY STATEMENT: Hazard to humans and domestic animals. KEEP OUT OF REACH OF CHILDREN

WARNING: Causes substantial but temporary eye injury. Do not get in eyes or on clothing. Wear protective eyewear (goggles, face shield, or safety glasses). Avoid contact with skin. Avoid inhalation of spray mist. Wash thoroughly with soap and water after handling. Remove contaminated clothing and wash clothing before reuse.

PHYSICAL & CHEMICAL HAZARDS: Contents under pressure. Do not use or store near heat or open flame. Do not puncture or incinerate container. Exposure to temperatures above 130°F may cause bursting.

FIRST AID STATEMENTS

IF IN EYES: Hold eye open and rinse slowly and gently with water for 15-20 minutes. Remove contact lenses, if present, after the first 5 minutes, then continue rinsing eye. Call a poison control center or doctor for treatment advice. **IF INHALED:** Move person to fresh air. If person is not breathing, call 911 or an ambulance, then give artificial respiration, preferably mouth-to-mouth if possible. Call a poison control center or doctor for further treatment advice. **IF ON SKIN OR CLOTHING:** Take off contaminated clothing. Rinse skin immediately with plenty of water for 15-20 minutes. Call a poison control center or doctor for treatment advice. **IF SWALLOWED:** Call a poison control center or doctor immediately for treatment advice. Have person sip a glass of water if able to swallow. Do not induce vomiting unless told to do so by a poison control center or doctor. Do not give anything by mouth to an unconscious person. **Have the product container or label with you when calling a poison control center or doctor, or going for treatment.**

DISPOSAL

Replace cap and discard container in trash. Do not incinerate or puncture.

BISSELL BRAND PRODUCTS

Complete Satisfaction Guaranteed
or your money fully refunded.

Questions? Comments?
Call 1-800-854-7368
©2001 Penn Champ, Inc.
E. Butler, PA 18029

A Bissell® Company

ACCEPT



Made in the U.S.A.
(491 mL)

FEB 22 2002

Under the Federal Insecticide, Fungicide, and
Rodenticide Act as amended, for the
pesticide, registered under
EPA Reg. No. 8284-7

Bissell® ONE STEP

DISINFECTANT

Bathroom Cleaner

Cleaner, Disinfectant, Deodorizer

ACTIVE INGREDIENT

INERT INGREDIENTS

99.59%

EPA Reg. No. 8284-7

EPA Est. No. 8284-PA-1

WARNING: CONTENTS UNDER PRESSURE.

Read carefully other precautions on back panel.

KEEP OUT OF REACH OF CHILDREN.

NET WT. 17 oz. (1 lb. 1oz.) 481g

8284-7

2-22-2002

11