

[8222-51]
TOWN & COUNTRY

T&C

EARWIG BAIT

WARNING

Harmful if swallowed. Avoid prolonged breathing of dust. Wash hands after use. Avoid contamination of feed and foodstuffs. Do not use on food crops. Keep away from children and domestic animals. Dispose of container promptly when empty.

ANTIDOTE FOR FLUORIDES: If conscious, induce vomiting by giving a tablespoonful of salt in a glass of warm water and repeat until vomit fluid is clear. Give milk or white of eggs beaten with water. Keep patient warm and quiet. CALL A PHYSICIAN IMMEDIATELY.

Our recommendations for use of this product are based upon tests believed to be reliable. The use of this product being beyond the control of the manufacturer, no guarantee, expressed or implied, is made as to the effects of such or the results to be obtained if not used in accordance with directions or established practice. The Buyer must assume all responsibility, including injury or damage, resulting from its misuse as such, or in combination with other materials.

Packed for
TOWN & COUNTRY ENTERPRISES
By GENERAL PACKAGING
& CHEMICAL CORP.
Union City, California

& COUNTRY

T&C

Net Wt. 2 1/2 Lbs.

\$1.79

EARWIG BAIT

8222-51

PREPARED BAIT FOR IMMEDIATE USE.

**SPECIFICALLY FOR USE
AGAINST EUROPEAN EARWIGS.**

ACTIVE INGREDIENT	BY WT.
*Sodium Fluosilicate	5%
INERT INGREDIENTS	95%
*Fluorine expressed as elemental	3%

*** KILLS EARWIGS ***



TOWN & COUNTRY

T&C

EARWIG BAIT

READ ENTIRE LABEL. USE STRICTLY IN ACCORDANCE WITH LABEL CAUTIONS, WARNINGS AND DIRECTIONS, AND IN CONFORMITY WITH FEDERAL AND STATE REGULATIONS.

DIRECTIONS

Apply T & C Earwig Bait over infested areas. Apply in late afternoon as Earwigs are night feeders. Do not broadcast on valuable plants as foliage may be injured. Do not water over baited area until at least two nights have elapsed. Earwigs wander about a great deal, therefore, apply over lawns, near foundations of houses and copings, along sidewalks and driveways. Be sure to treat thoroughly around doors of houses. Frequent baiting may be necessary to discourage reinfestation. Start baiting at first sign of Earwigs. Best results are obtained when thorough baiting is made at regular intervals during feeding periods. Earwigs may be found in flower parts, such as rose blooms, gladiolas and other flowers. When Earwigs enter houses, they may become a menace to health through food contamination. First brood generally appear in May and June; second brood in July and August.

Packed for
TOWN & COUNTRY ENTERPRISES
By GENERAL PACKAGING
& CHEMICAL CORP.
Union City, California

TOWN & COUNTRY

T&C

EARWIG BAIT

WARNING

Harmful if swallowed. Avoid prolonged breathing of dust. Wash hands after use. Avoid contamination of feed and foodstuffs. Do not use on food crops. Keep away from children and domestic animals. Dispose of container promptly when empty.

ANTIDOTE FOR FLUORIDES: If conscious, induce vomiting by giving a tablespoonful of salt in a glass of warm water and repeat until vomit fluid is clear. Give milk or white of eggs beaten with water. Keep patient warm and quiet. CALL A PHYSICIAN IMMEDIATELY.

Our recommendations for use of this product are based upon tests believed to be reliable. The use of this product being beyond the control of the manufacturer, no guarantee expressed or implied, is made as to the effects of such or the results to be obtained if not used in accordance with directions or established practice. The Buyer must assume all responsibility, including injury or damage, resulting from its misuse as such or in combination with other materials.

Packed for
TOWN & COUNTRY ENTERPRISES
By GENERAL PACKAGING
& CHEMICAL CORP.
Union City, California

TOWN & COUNTRY

T&C

EARWIG BAIT

Net Wt. 2 1/2 Lbs.

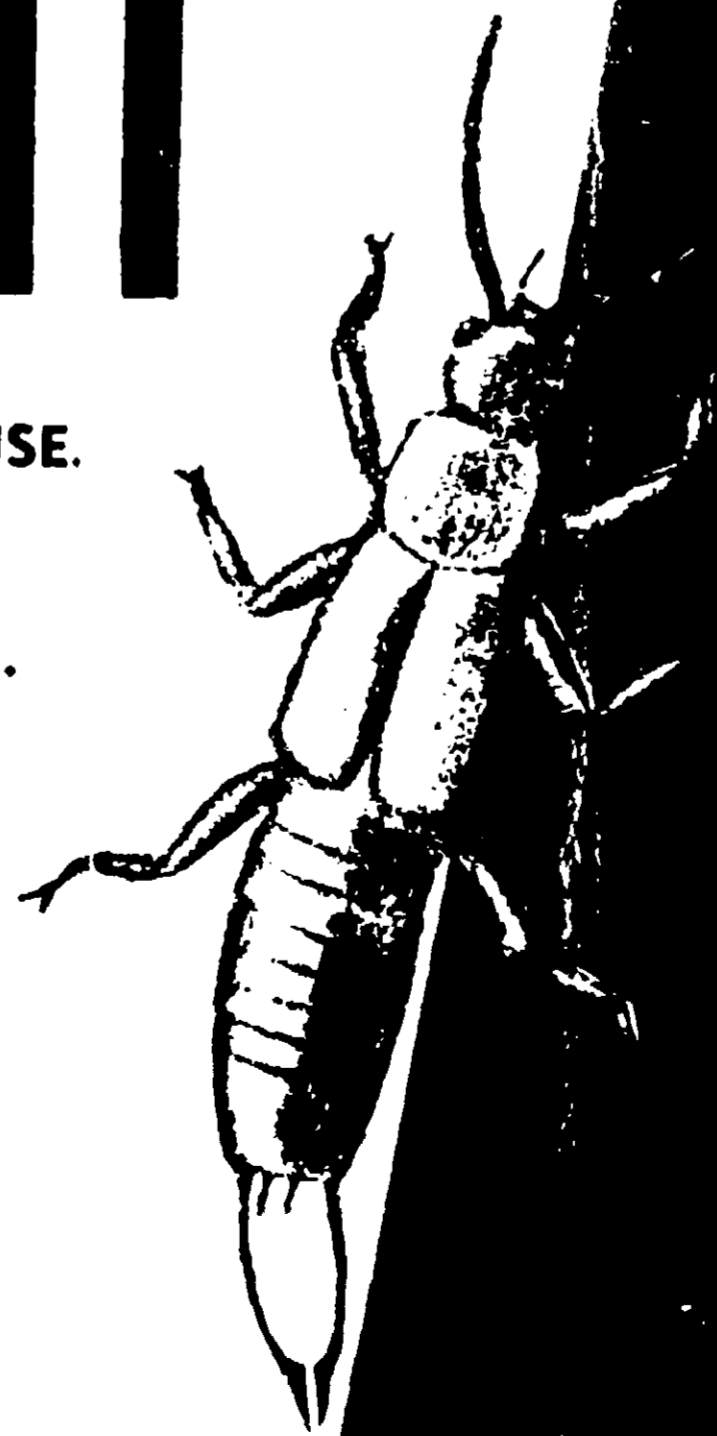
\$1.79

PREPARED BAIT FOR IMMEDIATE USE.

**SPECIFICALLY FOR USE
AGAINST EUROPEAN EARWIGS.**

ACTIVE INGREDIENT	BY WT.
*Sodium Fluosilicate	5%
INERT INGREDIENTS	95%
*Fluorine expressed as elemental	3%

KILLS EARWIGS



TOWN & COUNTRY

T&C

EARWIG BAIT

READ ENTIRE LABEL. USE STRICTLY IN ACCORDANCE WITH LABEL CAUTIONS, WARNINGS AND DIRECTIONS, AND IN CONFORMITY WITH FEDERAL AND STATE REGULATIONS.

DIRECTIONS

Apply T & C Earwig Bait to infested areas. Apply in late afternoon as Earwigs are night feeders. Do not broadcast on valuable plants as foliage may be injured. Do not water over baited areas until at least two nights have elapsed. Earwigs wander about a great deal, therefore apply over lawns, near foundations of houses, and especially along sidewalks and driveways. Be sure to treat the upper and lower doors of houses. Frequent baiting may be necessary to discourage reinfestation. Start baiting at first sign of Earwigs. Baiting is most effective when thorough treatments are made at regular intervals during feeding periods. Earwigs may be found in flower parts, such as gladiolus blooms, gladiolus and other flowers. When Earwigs enter flowers they may become immobilized and die through food poisoning. First brood generally appears in May and June, second brood in July and August.

Packed for
TOWN & COUNTRY ENTERPRISES
By GENERAL PACKAGING
& CHEMICAL CORP.
Union City, California