

# severe

BY ENTERPRISE®



EXTERIOR

OIL BASE

WATER REPELLENT

# CLEAR WOOD PRESERVATIVE

## SIDING & DECK PROTECTANT

KEEP OUT OF THE REACH OF CHILDREN. ACTIVE INGREDIENTS:

**WARNING: SEE ADDITIONAL**

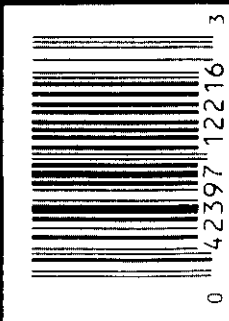
**PRECAUTIONS ON BACK OF LABEL.**

EPA REG. NO. 8177-73

3-Iodo-2-Propynyl Butyl Carbamate . . . 0.5

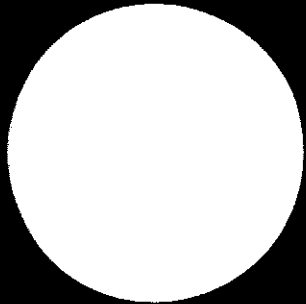
INERT INGREDIENTS . . . . . 99.4

100.0



SEP 17 1998

Under the Federal Insecticide, Fungicide, and Rodenticide Act as amended, for the pesticide, registered under EPA Reg. No. **8177-73**



- Water Repellent
- Retards Mildew, Rot & Decay
- Contains Polyurethane
- For Exterior Wood Siding, Shingles, Fences & Trim
- Dries to a Clear Protective Finish
- Contains a UV Screener

## Severe Weather® Clear Wood Preservative For your biggest investment...your home

Severe Weather knows what's best for the exterior of your home. Fortified with polyurethane, this clear protective finish seals exterior wood surfaces, resisting moisture penetration, rotting and decay. Severe Weather exceeds water repellency requirements of the Federal Spec. TT-W-572b,3.7. It also retards the aging (silvering) process of new wood. An effective fungicide helps to resist mildew while a UV screener works to filter out the sun's rays. **IMPORTANT:** Although this

product preserves and beautifies wood, it cannot do so indefinitely. When wood first begins to "silver" or darken with age, reapply Severe Weather Clear Wood Preservative after sanding all unweathered and protected areas. This allows greater penetration for the new application of this product. If painting is desired, surface must be well-weathered. Sand protected areas before applying an exterior oil base primer. Then paint.

### Type of Finish

Clear

### Where to Use

For use only above ground on bare exterior wood surfaces—structural lumber, wood siding, decks, shingles, fences, doors, frames, sashes and porches. No sealers are necessary for frequent dermal contact surfaces.

**DO NOT USE** on interior surfaces. **DO NOT USE** on previously stained, painted, varnished or sealed surfaces, hardboard siding

or on wood used for food, feed or potable water contact. Cover desirable plants and shrubs to avoid possible injury. This product should not be used where dairy and farm animals may come in contact with the treated wood. Do not mix Clear Wood Preservative with any other product.

### Coverage

Approximately 200-400 sq. ft. (18.6-37.2m<sup>2</sup>) per gallon depending on method of application, porosity and density of wood. Do not thin. Do not tint.

### Directions for Use

It is a violation of Federal law to use this product in a manner inconsistent with its labeling. Stir product thoroughly before using. Apply liberally by brush, roller or spray. Begin application at the corner of a few boards and continue until you reach a window or door frame. Do not apply in direct sunlight or on days when air or surface temperatures are below 50°F (10°C).

**IMPORTANT: ALLOW WOOD TO DRY 2 TO 3 DAYS AFTER RAIN BEFORE APPLYING CLEAR WOOD PRESERVATIVE.**

### Surface Preparation

Clean discolored areas with detergent and water to remove dirt. If discoloration is due to resin bleed, remove by sanding. Dark mildew discoloration may be present in new or old wood. It must be removed before applying this product. Scrub surfaces

### Drying Time

Dries to touch rapidly. Complete drying requires 24 hours. For extra protection apply a second coat within 48 hours of the first coat.

### Cleanup

Clean equipment promptly with brush and roller cleaner or mineral spirits.

### Extractive Bleeding

New as well as old redwood, cedar and Douglas fir woods contain natural water-soluble materials which "bleed" or migrate

through to the surface. This bleeding is normally reddish brown in fir and cedar and black in redwood. It must be removed with a mild, nonabrasive detergent solution before Clear Wood Preservative is applied. Cleaned wood must be dry at least 24 hours before applying Clear Wood Preservative.

with a solution of 1 part household bleach and 3 parts water. (Protect eyes and skin while using bleach solution.) Rinse well. Then allow to dry thoroughly. Replace rotted boards and wash surrounding areas with above 1-to-3 solution. (Wood turned dark from mildew must be bleached before application to kill the fungus.) Seal cracks around openings with caulking. Be sure surface is clean and dry. To insure the proper penetration of Clear Wood Preservative into

the wood, smooth new wood must be sanded to remove the mill glaze.

### STORAGE AND DISPOSAL

Store product in original container within locked storage area. Dispose of container and any unused product by securely wrapping container in several layers of newspaper. Then discard in trash. **DO NOT REUSE CONTAINER.**

**Precautionary Statements: HAZARD TO HUMANS AND DOMESTIC ANIMALS WARNING:** May be fatal if swallowed. Avoid contact with skin, eyes, or clothing. Avoid breathing of spray mist. Use with adequate ventilation. Avoid contamination with food. **FIRST AID:** If swallowed, do not induce vomiting. **CONTAINS PETROLEUM DISTILLATES.** Drink promptly a large quantity of milk, egg whites, gelatin solution or if these are not available, drink large quantities of water. **GET MEDICAL ATTENTION IMMEDIATELY.** In case of eye contact, flush with plenty of water for at least 15 minutes and get medical attention.

In case of contact with skin or clothing, remove contaminated clothing and wash skin with soap and water.

**ENVIRONMENTAL HAZARDS:** This product is toxic to fish. For terrestrial uses, do not apply directly to water, or to areas when surface water is present or to intertidal areas below the mean high water mark. Do not contaminate water by cleaning of equipment or disposal of waste. Apply this product only as specified on this label. If painting is ever desired, surface must be well-weathered. **PHYSICAL AND CHEMICAL HAZARDS: DO NOT USE, POUR, SPILL OR STORE NEAR HEAT OR OPEN FLAME.**

EMERGENCY MEDICAL TELEPHONE: 1-800-228-5635

**ACCEPTED**

SEP 17 1998

Under the Federal Insecticide, Fungicide, and Rodenticide Act as amended, for the pesticide, registered under EPA Reg. No. 8177-73

Enterprise Paint Co.  
Wheeling, Illinois 60090  
division of The Valspar Corporation

EPA EST. NO. 8177-IL-1

This product contains less than 720 g/l VOC (6.0 lbs/gal VOC)

2/2