

The Valspar Corporation  
1101 Third Street South  
Minneapolis, MN 55415

APR 20 1988

Attention: Mr. R.E. Chamberlin

Gentlemen:

Subject: Vinyl Anti-Fouling Paint Dark Brown 59-D-22  
EPA Registration No. 8177-42  
Vinyl Anti-Fouling Paint Dark Red 59-R-25  
EPA Registration No. 8177-43  
Vinyl Anti-Fouling Paint MIL-P-16189 (Formula 129/63)  
Black 559-J-1  
EPA Registration No. 8177-47 ✓  
Your Applications Dated September 2, 1988  
EPA Received Date October 3, 1988

Removal of Propylene Oxide, a toxic inert ingredient, from these formulations and declaring on the labels that "This product contains the toxic inert ingredient Tricresyl Phosphate" is in compliance with PR Notice 87-6 and is acceptable. Also, the revised Confidential Statements of Formula agree with their labels and are acceptable.

The labels referred to above, submitted in connection with registration under the Federal Insecticide, Fungicide, and Rodenticide Act (FIFRA), are acceptable provided that you:

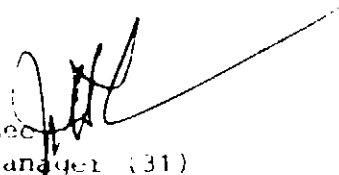
1. Make the labeling changes listed below before you release the product for shipment bearing the amended labeling.
  - a. On the left panel first column, delete the second Physical or Chemical Hazards statement "Do not use or store near heat or open flame" because this is in conflict with the correct Physical or Chemical Hazards statement "Flammable, keep away from heat and open flame."
  - b. Delete the words "Contains organic solvent" (and flame logo) because it will, more correctly, be replaced by the words "Contains Petroleum Distillates," which must appear on the front panel immediately below the ingredient statement.

50400:1/C:Lee:LL-20:KENCO:3/30/89:4/11/89:rw:JH:aw

2

If you have any questions concerning this letter, please call  
Mr. Edmond Prominski at (703) 557-7404.

Sincerely yours,



John H. Lee  
Product Manager (31)  
Antimicrobial Program Branch  
Registration Division (H7504C)

Enclosures

- c. Delete the word "Flammable" from the sentence "Flammable, causes eye irritation . . . ."
  - d. Move the sentences "Keep container closed when not in use. In case of spillage, absorb with inert material and dispose of in accordance with applicable regulations" so that they immediately follow the sentence "Do not contaminate water, food, or feed by storage and disposal."
  - e. On the front panel, replace the word "Industrial" with the word "Commercial."
  - f. Refer to the enclosure, "THE LABEL" and make sure that you have complied with the type size requirements and following items: 1, 2, 3, 4, 5, 6a, 6b, 7, 7a, 7b, 7d, 7e, 8, 8a, 8b, 9c, and 10d. Also, refer to the A-79 enclosure in meeting the final printed label submission requirements. In most cases the final label is the label that will be affixed to the container.
2. Submit five (5) copies of your final printed labeling before you release the product for shipment.

If these conditions are not complied with, the registration will be subject to cancellation in accordance with FIFRA section 6(e). Your release for shipment of the product bearing the amended labeling constitutes acceptance of these conditions.

A stamped copy of the labeling is enclosed for your records.

Since you must make the above change in your label, you may choose to update your labeling to reflect the current concept of "format labeling" (refer to the "The Label" enclosure and our comments below).

- Your "Precautionary Statements," "Hazards to Humans and Domestic Animals," headings and the "Precautionary/Safety, and Practical Treatment" statements should precede the "Environmental Hazards" and "Physical or Chemical Hazards" headings and statements.

NOTE that all these precede the Directions for Use (see the "Preferred" items 8, 8a, 8b, and 8c of "The Label").

For your information, we include:

1. "The Label" enclosure, which deals with the current concept of "format labeling."
2. A DRAFT left panel which reflects many of our label review comments made in (1) above.

J 65 HHS MTSZ

10,00 2551-01

**ENVIRONMENTAL HAZARDS:** This material is toxic to fish. Do not apply directly to water by cleaning of equipment or disposal of wastes. Do not allow chips and dust generated during paint removal to enter water. Dispose of paint chips in an approved landfill.

**DIRECTIONS FOR USE:** It is a violation of Federal law to use this product in a manner inconsistent with its labeling. **ANTI-FOULING PAINT FOR METAL BOTTOMS:** To control the attachment of marine fouling, i.e., barnacles, grass, algae, etc., on steel bottoms in salt and brackish water which would sustain such growth. Not recommended for use on aluminum. A maximum of two coats is recommended for best performance.

**Surface Preparation:** Before application of anti-fouling, all surfaces must be dry and cleaned of dirt, dust, oil, rust, loose paint, salt residues and other contaminants. Steel must be coated with a suitable primer or anti-corrosive barrier coats.

**Mixing:** Before use, power mix or bow the paint until the product is uniform. Stir the paint at intervals during application to maintain uniformity.

**Application:** Apply by brush, roller or spray. Do not paint in cold or damp weather. When used over epoxy base coats, the first coat of anti-fouling should be applied while the epoxy is still in a soft, uncured condition, typically, within

12-16 hours at 75°F (24°C). When this is not practical, apply a tie-coat of 60-R-6 Vinyl Primer, or 83 Series Hi-Build Vinyl within this interval. Anti-fouling may then be applied at any later time.

**Thinning:** Thin slightly with Thinner 7-T-37 when required for application. Use Thinner 7-T-37 for clean-up.

**Coverage:** Apply at a rate that will provide a 2 mil dry film per coat (theoretically 440 sq ft per gallon). Actual coverage will vary depending upon application technique, conditions and type of surface.

**Dry Time:** At 75°F and 50% RH, allow at least 4 hour dry time between coats and a minimum of 6 hours before re-coating. Where exposed to direct sunlight or high temperatures, launching is recommended no more than 24 hours after application.

### STORAGE AND DISPOSAL

**PESTICIDE DISPOSAL:** Do not contaminate water, food or feed by storage or disposal. Pesticide wastes are toxic. Improper disposal of excess pesticide, spray mixture, or rinsate is a violation of Federal law. If these wastes cannot be disposed of by use according to label instructions, contact your State Pesticide or Environmental Control Agency, or the Hazardous Waste representative at the nearest EPA Regional Office for guidance.

**CONTAINER DISPOSAL:** Triple rinse (or equivalent). Then offer for recycling or reconditioning, or puncture and dispose of in a sanitary landfill, or by other approved state and local procedures.

M.C. - 170

## PRECAUTIONARY STATEMENTS

### HAZARDS TO HUMANS (& DOMESTIC ANIMALS)

#### PHYSICAL OR CHEMICAL HAZARDS:

Do not use or store near heat or open flame.

CONTAINS ORGANIC SOLVENT

### WARNING!



FLAMMABLE. CAUSES EYE IRRITATION. HARMFUL IF ABSORBED THROUGH SKIN.

Avoid contact with eyes, skin and clothing. Wear protective clothing such as gloves, long-sleeved cotton shirt, long pants, and hat. May be fatal if swallowed or inhaled. Do not breathe vapors or spray mist. When used in enclosed areas, spraying paint or sanding boat surface, wear appropriate, properly fitted respirator (NIOSH/MSHA approved) during and after application unless air monitoring demonstrates vapor/mist levels are below applicable levels. Follow respirator manufacturer's directions for use. Remove contaminated clothing and wash before reuse. Wash thoroughly with soap and water after handling. Keep container closed when not in use. In case of spillage, absorb with inert material and dispose

of in accordance with applicable regulations.

**PRACTICAL TREATMENT:** If swallowed, Drink promptly a large quantity of milk, egg whites, gelatin solution or, if these are not available, drink large quantities of water. Avoid alcohol. Get medical attention. If in eyes, Flush with plenty of water. Get medical attention. If on skin, Wash with plenty of soap and water. Get medical attention. If inhaled, Remove victim to fresh air. If not breathing give artificial respiration, preferably mouth-to-mouth. Get medical attention.

**DOT SHIPPING NAME:** PAINT

**DOT HAZARD CLASS:** FLAMMABLE LIQUID

**DOT HAZARD IDENTIFICATION NUMBER:** UN 1253

Refer to Product Material Safety Data Bulletin, available upon request, for further safety and handling information. (E.L. 64 (12.85))

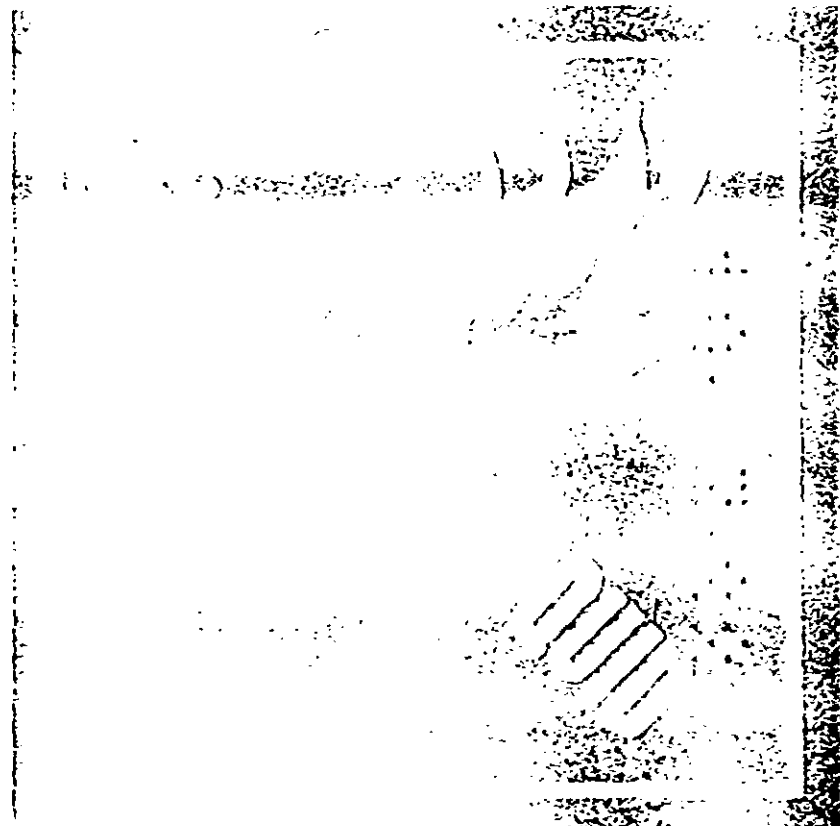
BES

APR 20

Under the Federal Insecticide, Fungicide, and Rodenticide Act as amended, for the pesticide registered under EPA Reg. No.

5177-47

PAINT  
UN 1263



ANTI-FOULING INGREDIENTS  
ACTIVE INGREDIENTS

Active Ingredient:  
Cuprous Oxide.....60.0%  
Inert Ingredients.....40.0%  
(Copper as Metallic 53.0%)

This product contains the toxic inert ingredient Tricresyl Phosphate

The VOC of this product exceeds  
420 grams/liter (3.5 lbs/gal)  
SR-6 (14-87)

The Valspar Corporation  
MAINTENANCE & MARINE COATINGS DEPARTMENT  
MINNEAPOLIS, MN 55415

Medical Emergency No.  
1-800-228-5635 SR-9  
(4-88)

**BEST AVAILABLE COPY**