

DIRECTIONS FOR USE GENERAL CLASSIFICATION

It is a violation of Federal law to use this product in a manner inconsistent with its labeling.

When fed to cattle, RABON[®] Oral Larvicide passes through the digestive system into the animal's manure where it kills fly larvae on contact shortly after fly eggs hatch. By preventing larval development, RABON[®] Oral Larvicide helps to control horn flies and face flies on pasture and house flies and stable flies in and around cattle lots.

Feed TRIPLE "F" FEEDS LIVESTOCK MINERAL MIXTURE 6-12 R NO. 9410 at the rates below by mixing it into the ground grain or complete daily ration.

| <u>Pounds of Body weight</u> | <u>Oz./head/day</u> |
|------------------------------|---------------------|
| 400-600 | 1.6 |
| 600-800 | 2.2 |
| 800-1000 | 2.7 |
| 1000-1200 | 3.3 |

Start feeding TRIPLE "F" FEEDS LIVESTOCK MINERAL MIXTURE 6-12R NO. 9410 early in the spring before flies begin to appear and continue feeding throughout the summer into the fall until cold weather restricts fly activity.

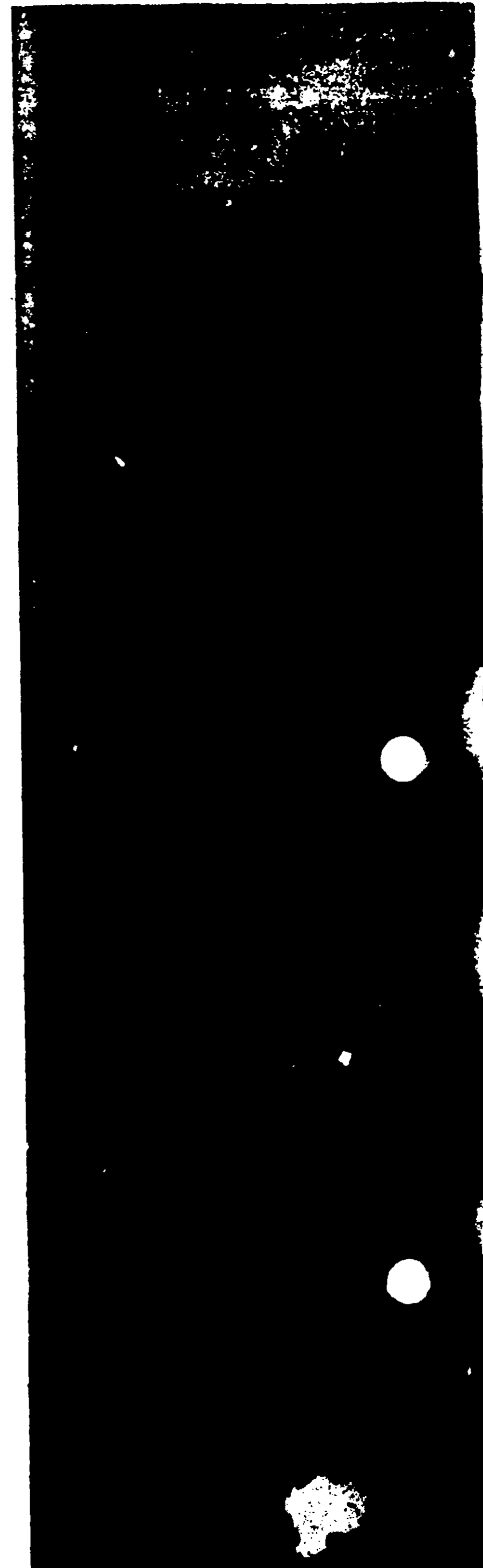
TRIPLE "F" FEEDS LIVESTOCK MINERAL MIXTURE 6-12R NO. 9410 may be fed up to slaughter and to lactating dairy cows.

TRIPLE "F" FEEDS LIVESTOCK MINERAL MIXTURE 6-12R NO. 9410 prevents the development of horn flies, face flies, house flies in the manure of treated cattle but is not effective against existing adult flies. When starting a feeding program during the fly season, it is desirable to use other control measures to reduce the population of existing adult flies.

In some cases, supplemental fly control measures may be needed in and around cattle lots and buildings to control adult house flies and stable flies which can breed not only in cattle manure but in other decaying vegetable matter or silage on the premises.

In order to achieve optimum fly control, TRIPLE "F" FEEDS LIVESTOCK MINERAL MIXTURE 6-12R NO. 9410 should be used in conjunction with other good management and sanitation practices.

STORAGE AND DISPOSAL



Feed **TRIPLE "F" FEEDS LIVESTOCK MINERAL MIXTURE 6-12 R NO. 9410** at the rates below by mixing it into the ground grain or complete daily ration.

| <u>Pounds of Body weight</u> | <u>Oz./head/day</u> |
|------------------------------|---------------------|
| 400-600 | 1.6 |
| 600-800 | 2.2 |
| 800-1000 | 2.7 |
| 1000-1200 | 3.3 |

Start feeding **TRIPLE "F" FEEDS LIVESTOCK MINERAL MIXTURE 6-12R NO. 9410** early in the spring before flies begin to appear and continue feeding throughout the summer into the fall until cold weather restricts fly activity.

TRIPLE "F" FEEDS LIVESTOCK MINERAL MIXTURE 6-12R NO. 9410 may be fed up to slaughter and to lactating dairy cows.

TRIPLE "F" FEEDS LIVESTOCK MINERAL MIXTURE 6-12R NO. 9410 prevents the development of horn flies, face flies, house flies in the manure of treated cattle but is not effective against existing adult flies. When starting a feeding program during the fly season, it is desirable to use other control measures to reduce the population of existing adult flies.

In some cases, supplemental fly control measures may be needed in and around cattle lots and buildings to control adult house flies and stable flies which can breed not only in cattle manure but in other decaying vegetable matter or silage on the premises.

In order to achieve optimum fly control, **TRIPLE "F" FEEDS LIVESTOCK MINERAL MIXTURE 6-12R NO. 9410** should be used in conjunction with other good management and sanitation practices.

STORAGE AND DISPOSAL

Do not contaminate water or food by storage or disposal. Open dumping is prohibited. Dispose of in an incinerator or landfill approved for pesticide containers, or bury in a safe place.

9410x1275

RABON Oral Larvicide is the registered trademark of the Shell Chemical Co.

Made in U.S.A.

U.S. Patent No. 3,102,842

