

PRECAUTIONS

WEED KILLER will also kill a wide variety of flowers, bushes, trees and vegetables. Care should be taken during application to prevent drifting onto these desirable plants. Vapors may injure susceptible plants in immediate vicinity. Coarse sprays are less likely to drift.

WEED KILLER may injure or kill bent grass or clovers. St. Augustine grass and Dichondra may be injured. Do not use on newly seeded lawns. After spraying is completed, the spraying equipment should be thoroughly washed with water, preferably hot, soapy water, before using for any other purpose.

CAUTION: Avoid contact with the skin, eyes or clothing. Harmful if swallowed.

Do not store near fertilizers, seeds, insecticides or fungicides.

This product is toxic to fish. Keep out of lakes, streams or ponds. Do not contaminate water by cleaning of equipment or disposal of wastes.

NOTICE

Seller makes no warranty, expressed or implied, concerning the use of this product other than indicated on the label. Buyer assumes all risk of use and or handling of this material when such use and or handling is contrary to label instructions.

NET CONTENTS _____

MILLER'S

SELECTIVE LAWN WEED KILLER

ACTIVE INGREDIENTS:

*Isooctyl Ester of 2,4-Dichlorophenoxy-acetic Acid 12.0%
 **Isooctyl Ester of Silvex 2,4,5-Trichloro-propionic Acid 5.7%

INERT INGREDIENTS: 82.3%
TOTAL 100.0%

*Acid equivalent 8.0% by weight or .67 lbs. per gallon.

**Acid equivalent 4.0% by weight or .33 lbs. per gallon.

E.P.A. REG. NO. 8123-39

CAUTION: KEEP OUT OF REACH OF CHILDREN
 See Additional Cautions on Left Panel

SOLD BY

FRANK MILLER & SONS, INC.
 13831 S. Emerald Ave.
 Chicago, Illinois 60627

DIRECTIONS FOR USE

WEED KILLER mixes easily with ordinary tap water to form a milky emulsion. Best results are obtained by applying spray in a rainlike application. Leaves of weeds should be wetted until spray begins to run from leaves. It is not necessary to drench leaves. Apply when weeds are young and actively growing. Fastest results are obtained by applying spray on fair days when temperature is above 65° F.

WEEDS KILLED BY WEED KILLER

<u>Bindweed</u>	<u>Cocklebur</u>	<u>Mustards</u>
<u>Buckhorn</u>	<u>Daisy</u>	<u>Plantains</u>
<u>Burdock</u>	<u>Dandelion</u>	<u>Ragweed</u>
<u>Chickweed</u>	<u>Goldenrod</u>	And many other weeds

WEED KILLER will not harm growth of most common grass.

HOW TO MIX

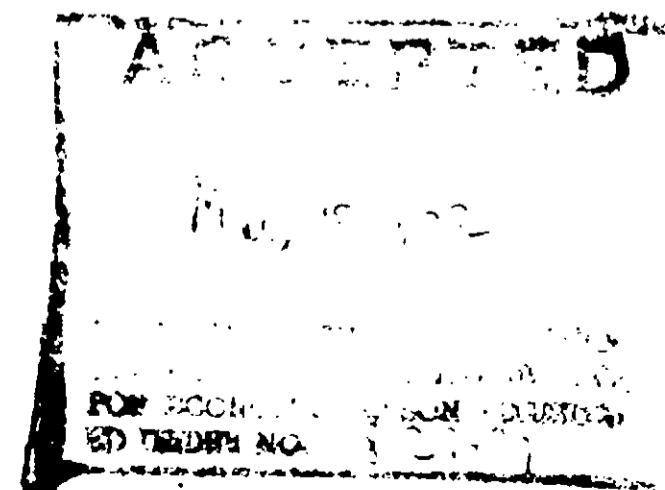
Use WEED KILLER in the following proportions:

WEED KILLER	to	Gallons of Water
1 Ounce (2) tablespoons		1 Gallon
1 Pint		12-15 Gallons
1 Quart		25-30 Gallons
1 Gallon		100-125 Gallons

Use 100-125 gallons of mixed spray to cover one acre. Four to five quarts of mixed solution is sufficient for coverage of 435 square feet.

Do not reuse empty container. Destroy it by perforating or crushing. Bury or discard in a safe place.

LSK-33



PRECAUTIONS

WEED KILLER will also kill a wide variety of flowers, bushes, trees and vegetables. Care should be taken during application to prevent drifting onto these desirable plants. Vapors may injure susceptible plants in immediate vicinity. Coarse sprays are less likely to drift.

WEED KILLER may injure or kill bent grass or clovers. St. Augustine grass and Dichondra may be injured. Do not use on newly seeded lawns. After spraying is completed, the spraying equipment should be thoroughly washed with water, preferably hot, soapy water, before using for any other purpose.

CAUTION: Avoid contact with the skin, eyes or clothing. Harmful if swallowed. Do not store near fertilizers, seeds, insecticides or fungicides.

This product is toxic to fish. Keep out of lakes, streams or ponds. Do not contaminate water by cleaning of equipment or disposal of wastes.

NOTICE

Seller makes no warranty, expressed or implied, concerning the use of this product other than indicated on the label. Buyer assumes all risk of use and or handling of this material when such use and or handling is contrary to label instructions.

NET CONTENTS _____

MILLER'S

SELECTIVE LAWN WEED KILLER

ACTIVE INGREDIENTS:

*Isooctyl Ester of 2,4-Dichlorophenoxy-acetic Acid	12.0%
**Isooctyl Ester of Silvex 2,4,5-Trichloro-propionic Acid	5.7%
INERT INGREDIENTS:	82.3%
TOTAL	100.0%

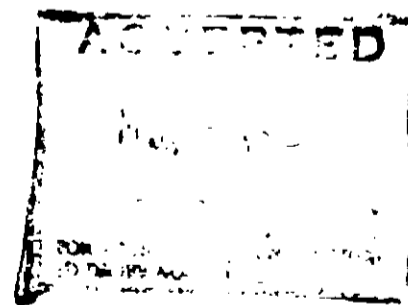
*Acid equivalent 8.0% by weight or .67 lbs. per gallon.
 **Acid equivalent 4.0% by weight or .33 lbs. per gallon.

E.P.A. REG. NO. 8123-39

CAUTION: KEEP OUT OF REACH OF CHILDREN
 See Additional Cautions on Left Panel

SOLD BY

FRANK MILLER & SONS, INC.
 13831 S. Emerald Ave.
 Chicago, Illinois 60627



DIRECTIONS FOR USE

WEED KILLER mixes easily with ordinary tap water to form a milky emulsion. Best results are obtained by applying spray in a rainlike application. Leaves of weeds should be wetted until spray begins to run from leaves. It is not necessary to drench leaves. Apply when weeds are young and actively growing. Fastest results are obtained by applying spray on fair days when temperature is above 65° F.

WEEDS KILLED BY WEED KILLER

<u>Bindweed</u>	<u>Cocklebur</u>	<u>Mustards</u>
<u>Buckhorn</u>	<u>Daisy</u>	<u>Plantains</u>
<u>Burdock</u>	<u>Dandelion</u>	<u>Ragweed</u>
<u>Chickweed</u>	<u>Goldenrod</u>	And many other weeds

WEED KILLER will not harm growth of most common grass.

HOW TO MIX

Use WEED KILLER in the following proportions:

WEED KILLER	to	Gallons of Water
1 Ounce (2) tablespoons		1 Gallon
1 Pint		12-15 Gallons
1 Quart		25-30 Gallons
1 Gallon		100-125 Gallons

Use 100-125 gallons of mixed spray to cover one acre. Four to five quarts of mixed solution is sufficient for coverage of 435 square feet.

Do not reuse empty container. Destroy by perforating or crushing. Bury or discard in a safe place.

LSK-33