

8119-5

ACCEPTED

8119-5

02/19/2002

1/2

FEB 19 2002

Under the Federal Insecticide, Fungicide, and Rodenticide Act.

PRECAUTIONARY STATEMENTS

HAZARDS TO HUMANS AND DOMESTIC ANIMALS

CAUTION: Causes eye irritation. May be harmful if swallowed. Avoid breathing dust. Avoid contact with skin, eyes, or clothing. Wash thoroughly after use. Keep out of reach of children and domestic animals. This pesticide may be fatal to dogs or other pets if eaten. Keep pets out of treated area.

IMPORTANT: Keep away from children, dogs and pets. Bait may be attractive to dogs. Confine pets during application to prevent them from believing they are being fed. Use and store under conditions where there will not be a hazard.

USER SAFETY REQUIREMENTS

- Wear long sleeved shirt, long pants, shoes plus socks and chemical resistant gloves, such as polyethylene or butyl rubber or neoprene rubber or viton when applying this product.
- Change clothing as soon as possible after use.
- Wash the outside of gloves before removing. As with any pesticide product, wash hands thoroughly immediately after handling and before smoking or using the toilet.
- Do not allow children or pets to contact treated area until dust has settled.

FIRST AID

This product contains N-methyl carbamate that inhibits cholinesterase.

If swallowed:

- * Call poison control center or doctor immediately for treatment advice.
- * Have person sip a glass of water if able to swallow.
- * Do not induce vomiting unless told to do so by the poison control center or doctor.
- * Do not give anything by mouth to an unconscious person.

If in eyes:

- * Hold eye open and rinse slowly and gently with water for 15 - 20 minutes.
- * Remove contact lenses, if present, after the first 5 minutes, then continue rinsing eye.
- * Call a poison control center or doctor for treatment advice.

If on skin or clothing:

- * Take off contaminated clothing.
- * Rinse skin immediately with plenty of water 15 - 20 minutes.
- * Call a poison control center or doctor for treatment advice.

If inhaled:

- * Move person to fresh air.
- * If person is not breathing, call 911 or an ambulance, then give artificial respiration, preferably by mouth-to-mouth, if possible.
- * Call a poison control center or doctor for further treatment advice.

HOT LINE NUMBER

Have the product container or label with you when calling a poison control center or doctor, or going for treatment. For information on this pesticide product (including health concerns, medical emergencies, or pesticide incidents), call the National Pesticide Info Center (NPIC) at 1-800-858-7378.

NOTE TO PHYSICIAN

Carbaryl is a moderate, reversible cholinesterase inhibitor. Atropine is antidotal.

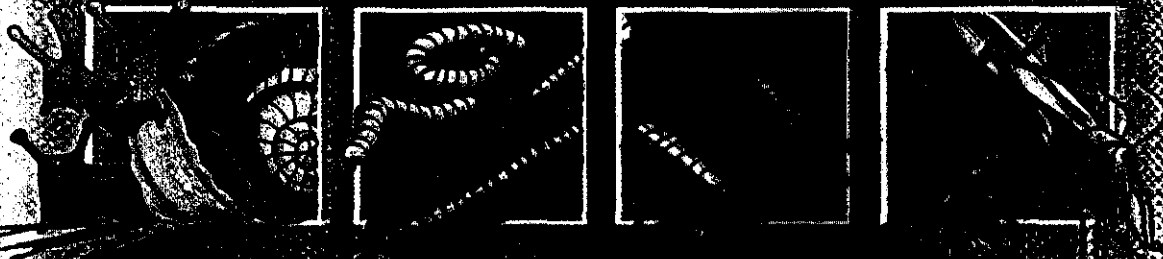
STORAGE AND DISPOSAL

STORAGE: Store in a cool, dry, locked location out of direct sunlight, in original container, and not accessible to children or pets. Avoid contamination of feed and foodstuffs.

DISPOSAL: If empty: Do not reuse this container. Place in trash or offer for recycling if available. If partly filled: Call your local solid waste agency or 1-800-CLEANUP for disposal instructions. Never place unused product down any indoor or outdoor drain.

CORRY'S

SLUG SNAIL & INSECT



CAUTION

Keep out of reach of children and pets. This product may be harmful if swallowed or inhaled. Avoid breathing dust. Avoid contact with skin, eyes, or clothing. Wash thoroughly after use. Keep out of reach of children and domestic animals. This pesticide may be fatal to dogs or other pets if eaten. Keep pets out of treated area. Do not allow children or pets to contact treated area until dust has settled.

NET WT. 2.15 LBS (908g)

CORRY'S

SLUG, SNAIL & INSECT

CORRY'S

CORRY'S SLUG, SNAIL & INSECT KILLER is a convenient, ready-to-use bait. It is extremely effective in the control of slugs, snails, earwigs, sowbugs, cutworms, crickets, grasshoppers, ants, armyworms, millipedes, pillbugs, and darkling beetles. Easy to use, quick and economical CORRY'S SLUG, SNAIL & INSECT KILLER resists rain and sprinkling and remains effective in the garden for many days.

DIRECTIONS FOR USE

It is a violation of Federal law to use this product in a manner inconsistent with its labeling. Wearing chemical resistant gloves, such as polyethylene or butyl rubber or neoprene rubber or vinyl, apply product directly from original container on soil in area to be treated. Apply when air is calm to avoid drift and contact with eyes and skin. Start applying at the farthest corner of the treatment area and work backward to avoid contact with dusted surfaces. Allow dust to settle in treated areas before reentering. Do not repeat application more than once every seven days. Do not apply product more than four times per season. Days from product application to harvest noted below in parenthesis under SPECIAL SITUATIONS.

TO APPLY

Scatter bait lightly on soil in area to be treated. Apply heavier if infestation is severe. This product is for use in home and garden areas. This bait is extremely attractive to slugs, snails, and other listed insects and will lure them from their hiding places. All likely places should be treated as slugs, snails, and other listed insects travel. They favor damp, well shaded locations where they can obtain shelter by day. Be sure area to be treated is damp. In dry weather, water well before applying bait. Preferred baiting time is in the evening as these pests feed mainly at night. Normally apply bait every two weeks until infestation is under control. Heavy or prolonged rain can shorten effective period of bait. Use more frequently under these conditions. Use approximately one pound per 1750 square feet. Plants noted below with * use approximately one pound per 2200 square feet.

***SPECIAL SITUATIONS**

If slugs, snails, and other listed insects are invading from adjacent properties, a pencil-thin line the entire length of the infested area will form a barrier and result in excellent control. *CORRY'S SLUG, SNAIL & INSECT KILLER can be used to protect home ornamental plants, flower gardens, dichondra and home turf lawns, and fruit and vegetable plants. When protecting fruit and vegetable plants treat area around plants and between rows. Do not apply to foliage or edible parts of plant. Protect the following fruit and vegetable plants: asparagus (1), beans (3), cabbage (3), carrots (7), celery (15), *cucumbers (3), lettuce (15), *melons (3), peas (3), peppers (3), potatoes (7), radishes (7), spinach (15), *squash (3), tomatoes (3), turnips (7), and strawberries (7).

ENVIRONMENTAL HAZARDS

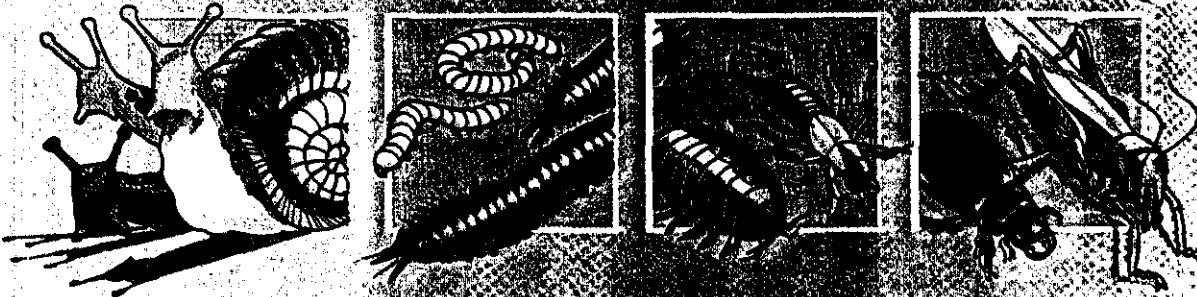
This product is extremely toxic to aquatic and estuarine invertebrates. For terrestrial uses, do not apply directly to water, or to areas where surface water is present or to intertidal areas below the mean high water mark. Do not contaminate water when disposing of equipment washwaters.

Mfd by: E.M. Matson, Jr. Co., Inc. ©10/ 2001
P.O. Box 1820,
North Bend, WA 98045

EPA Reg. No. 8119-5
EPA Est. No. 8119-WA-1

SLUG SNAIL & INSECT

KILLER



Remains Effective After Rain or Sprinkling

Keep out of reach of children

CAUTION: This pesticide may be fatal to dogs or other pets if eaten. Keep pets out of treated area. Read and follow all directions. See side panel for additional precautionary statements.

ACTIVE INGREDIENTS: Metaldehyde (2, 4, 6, 8-tetramethyl—1, 3, 5, 7-tetraoxocyclo-octane) 2%
Carbaryl (1-Naphthyl N-methylcarbamate) 5%
OTHER INGREDIENTS 93%

Net Weight 2 lbs. (908g)