

SEP 27 1999

Under the Federal Insecticide,  
Fungicide, and Rodenticide Act,  
as amended, for the pesticide  
registered under 8119-5

CORRY'S SLUG, SNAIL & INSECT KILLER is a convenient, ready-to-use bait. It is extremely effective in the control of slugs, snails, earwigs, sowbugs, cutworms, crickets, grasshoppers, ants, armyworms, millipedes, pillbugs, and darkling beetles. Easy to use, quick and economical CORRY'S SLUG, SNAIL & INSECT KILLER resists rain and sprinkling and remains effective in the garden for many days.

**DIRECTIONS FOR USE**

It is a violation of Federal law to use this product in a manner inconsistent with its labeling. Wearing household latex or rubber gloves, apply product directly from original container on soil in area to be treated. Apply when air is calm to avoid drift and contact with eyes and skin. Start applying at the farthest corner of the treatment area and work backward to avoid contact with dust faces. Allow dust to settle in treated area before reentering. Do not repeat application more than once every seven days. Do not apply product more than four times per season. Days from product application to harvest noted below in parenthesis under SPECIAL SITUATIONS.

**TO APPLY**

Scatter bait lightly on soil in area to be treated. Apply heavier if infestation is severe. This product is for use in home and garden areas. This bait is extremely attractive to slugs, snails, and other listed insects and will lure them from their hiding places. All likely places should be treated as slugs, snails, and other listed insects travel. They favor damp, well shaded locations where they can obtain shelter by day. Be sure area to be treated is damp. In dry weather, water well before applying bait. Preferred baiting time is in the evening as these pests feed mainly at night. Normally apply bait every two weeks until infestation is under control. Heavy or prolonged rain can shorten effective period of bait. Use more frequently under these conditions. Use approximately one pound per 1750 square feet. (Noted below with \* use approximately one pound per 2200 square feet.

**\*SPECIAL SITUATIONS**

If slugs, snails, and other listed insects are invading from adjacent properties, a pencil-thin line the entire length of the infested area will form a barrier and result in excellent control.

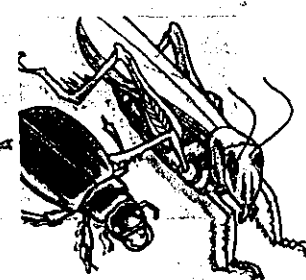
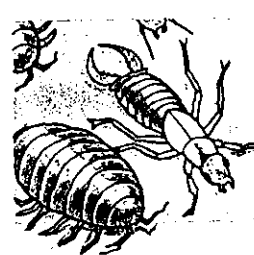
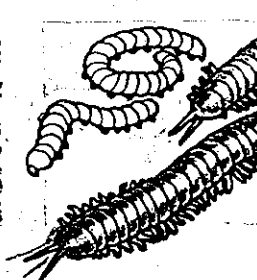
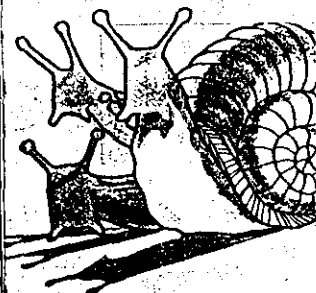
\*CORRY'S SLUG, SNAIL & INSECT KILLER can be used to protect home ornamental plants, flower gardens, dichondra and home turf lawns, and fruit and vegetable plants. When protecting fruit and vegetable plants treat area around plants and between rows. Do not apply to foliage or edible parts of plant. Protect the following fruit and vegetable plants: asparagus (1), beans (3), cabbage (3), carrots (7), celery (15), \*cucumbers (3), lettuce (15), \*melons (3), peas (3), peppers (3), potatoes (7), radishes (7), spinach (15), \*squash (3), tomatoes (3), turnips (7), and strawberries (7).

**STORAGE:** Store in cool, dry, locked location out of direct sunlight, in original container, and not accessible to children or pets. Avoid contamination of feed and foodstuffs.

**DISPOSAL:** Do not reuse carton. Discard carton in trash. Securely wrap original container in several layers of newspaper and discard in trash.

**CORRY'S****IDEAL FOR VEGETABLE GARDENS**

# SLUG SNAIL & INSECT KILLER



*Remains Effective After Rain or Sprinkling*

**Keep out of reach of children.**

**CAUTION:** This pesticide may be fatal to dogs or other pets if eaten. Keep pets out of treated area. Read and follow all directions. See side panel for additional precautionary statements.

**ACTIVE INGREDIENTS:** Metaldehyde (2, 4, 6, 8-tetramethyl-1, 3, 5, 7-tetraoxocyclo-octane) . . . . . 2%  
Carbaryl (1-Naphthyl N-methylcarbamate) . . . . . 5%  
**OTHER INGREDIENTS** . . . . . 93%

**Net Weight 2 lbs. (908g)**

CORRY'S

# SLUG SNAIL & INSECT KILLER

CUT AND  
LIFT

## PRECAUTIONARY STATEMENTS HAZARDS TO HUMANS AND DOMESTIC ANIMALS

**CAUTION:** Causes eye irritation. May be harmful if swallowed. Avoid breathing dust. Avoid contact with skin, eyes, or clothing. Wash thoroughly after use. Keep out of reach of children and domestic animals. This pesticide may be fatal to dogs or other pets if eaten. Keep pets out of treated area.

**IMPORTANT:** Keep away from children, dogs or pets. Bait may be attractive to dogs. Confine pets during application to prevent them from believing they are being fed. Use and store under conditions where there will not be a hazard.

## USER SAFETY REQUIREMENTS

- Wear long-sleeved shirt, long pants, shoes plus socks and household latex or rubber gloves when applying this product.
- Change clothing as soon as possible after use.
- Wash the outside of gloves before removing. As with any pesticide product, wash hands thoroughly immediately after handling and before eating, smoking or using the toilet.
- Do not allow children or pets to contact treated area until dust has settled.

**STATEMENT OF PRACTICAL TREATMENT**  
If swallowed: Do not induce vomiting. Seek medical assistance immediately. If on skin: Wash with plenty of soap and water. Get medical attention if irritation persists. If in eyes: Flush with plenty of water. Call a physician if irritation persists. If inhaled: Remove from further exposure and treat symptomatically. **NOTE TO PHYSICIANS:** Carbaryl is a moderate, reversible cholinesterase inhibitor. Atropine is antidotal.

## ENVIRONMENTAL HAZARDS

This product is extremely toxic to aquatic and estuarine invertebrates. For terrestrial uses, do not apply directly to water, or to areas where surface water is present or to intertidal areas below the mean high water mark. Do not contaminate water when disposing of equipment washwaters.

For information on this pesticide product (including health concerns, medical emergencies, or pesticide incidents), call the National Pesticide Telecommunications Network at 1-800-856-7373.

Mfd. by: E.M. Matson, Jr. Co., Inc.  
P.O. Box 1820  
North Bend, WA 98045

EPA Reg. No. 8119-5

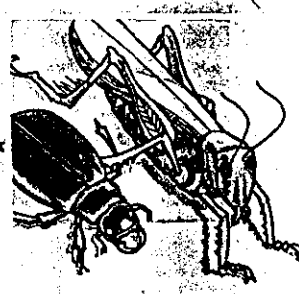
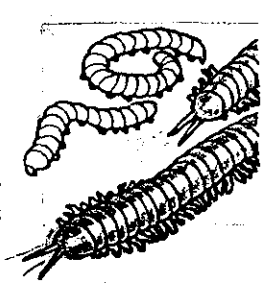
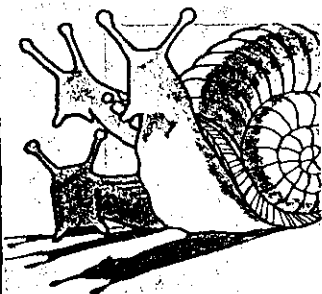
EPA Est. No. 8119-WA-1

© 2000 E.M. Matson, Jr. Co., Inc.  
Made in U.S.A.

CORRY'S

IDEAL FOR VEGETABLE GARDENS

# SLUG SNAIL & INSECT KILLER



Remains Effective After Rain or Sprinkling

Keep out of reach of children.

**CAUTION:** This pesticide may be fatal to dogs or other pets if eaten. Keep pets out of treated area. Read and follow all directions. See side panel for additional precautionary statements.

ACTIVE INGREDIENTS: Metaldehyde (2, 4, 6, 8-tetramethyl-1, 3, 5, 7-tetraoxacyclo-octane) ..... 2%  
Carbaryl (1-Naphthyl N-methylcarbamate) ..... 5%  
OTHER INGREDIENTS ..... 93%

Net Weight 2 lbs. (908g)