

NET CONTENTS ONE PINT

CAUTION: KEEP OUT OF REACH OF CHILDREN

LIQUINOX START

A solution of growth-promoting substances, including Vitamin B₁, hormone-like substances (and plant-growth regulator), organic yucca extract, chelated iron, and phosphoric acid. Scientifically formulated to stimulate root growth and reduce the shock of transplanting. An effective solution for use on all types of transplants including ornamentals, bedding plants, bare root trees, shrubs and roses.

GUARANTEED ANALYSIS

- VITAMIN B₁ (Thiamine Mononitrate).....0.10%
- ALPHA NAPHTHALENE ACETIC ACID (Hormone-like Substance).....0.04%
- PHOSPHORIC ACID, available.....2.00% (Derived from Phosphoric Acid)
- IRON, chelated, expressed as metal.....0.10% (Derived from Ethylene Diamine Acetate)
- AMINOTRIPYRIDINE ACID (Containing agent).....3.50%
- POLYHYDROXYDIOXIDE ACID* (Coating agent).....1.50%

*Derived from yucca extract.

Produced in U.S.A.
LIQUINOX COMPANY
 PORTLAND, OREGON

**A ROOT STIMULANT
 ABSORBS TRANSPLANT SHOCK**

CONCENTRATED
**VITAMIN B-1
 AND
 HORMONE-LIKE
 SUBSTANCE**

PLUS
CHELATED IRON and PHOSPHATE

WITH **YUCCA EXTRACT*** BASE

DIRECTIONS

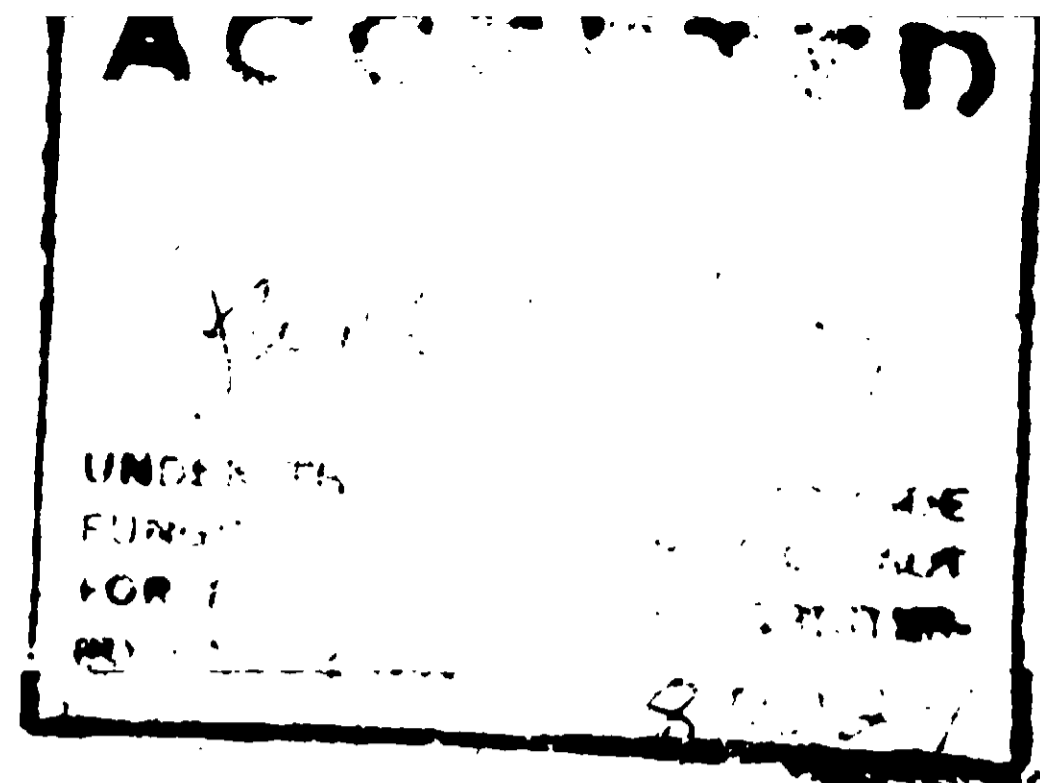
Mix Liquinox START with water at the rate of one tablespoon per gallon and soak soil surrounding seedlings and transplants.

Apply Liquinox START with each watering for two to three weeks until plants are well established. Follow with regular applications of Liquinox GROW to achieve complete fertilization and outstanding growth.

This is a concentrated material and should be mixed and applied only as directed. Not for human consumption.

- ACTIVE INGREDIENTS**
- Alpha naphthoic acetic acid 0.04%
- INERT INGREDIENTS** 99.96%

USDA Registered



NET CONTENTS ONE PINT

CAUTION: KEEP OUT OF REACH OF CHILDREN

Liquinox
Start

LIQUINOX START

A solution of growth-promoting substances, including Vitamin B₁, hormone-like substance (and plant-growth regulator), organic yucca extract, chelated iron and phosphoric acid.

Scientifically formulated to stimulate root growth and to reduce the shock of transplanting.

An effective solution for use on all types of transplants, including ornamentals, bedding plants, bare root trees, shrubs and roses.

GUARANTEED ANALYSIS

- VITAMIN B₁**
(Thiamine Mononitrate).....0.10%
- ALPHA NAPHTHALENE**
ACETIC ACID (Hormone-like Substance)0.04%
- PHOSPHORIC ACID**, available.....2.00%
(Derived from Phosphoric Acid)
- IRON**, chelated,
expressed as metallic.....0.10%
(Derived from Ethylenediaminetetraacetate)
- AMINOTRIETHANOIC ACID** (Chelating agent).....3.50%
- POLYHYDROXYDIOIC ACID*** (Chelating agent).....1.50%

*Derived from Yucca Extract.

A Product of U.S.A.

LIQUINOX COMPANY
ORANGE, CALIFORNIA

CONCENTRATED
VITAMIN B-1
AND
HORMONE-LIKE
SUBSTANCE

WITH **YUCCA EXTRACT*** BASE

DIRECTIONS

Mix Liquinox START with water at the rate of one tablespoonful per gallon and soak soil surrounding cuttings and transplants.

Apply Liquinox START with each watering for two to three weeks or until plants are well established. Follow with regular applications of Liquinox GROW to achieve complete fertilization and outstanding growth.

This is a concentrated material and should be mixed and applied only as directed. Not for human consumption.

ACTIVE INGREDIENT

- Alpha naphthalene
- acetic acid 0.04%
- INERT INGREDIENTS**99.96%

USDA Reg. No. 8002-1