

GLOUCESTER

MARINE PAINTS

ACCEPTED
MAR 13 1981
Under the Federal Insecticide, Fungicide, and Rodenticide Act, registered under the FIFRA Act, 70514-01

ACTIVE INGREDIENTS
INERT INGREDIENTS
Total Content
(from Cup)



**ANTI-FOULING
BOTTOM PAINT**

SUPER 570 RED

ONE U.S. GALLON

CAUTION! COMBUSTIBLE

KEEP OUT OF REACH OF CHILDREN. SEE OTHER CAUTIONS ON BACK PANEL

SUPER 570 RED ANTI-FOULING PAINT

This is a hard, durable and smooth finish paint with remarkable anti-fouling properties. It is for use on high-speed boats where least frictional resistance is desired and for boats in the water year round or in tropical waters.

GENERAL INFORMATION

Stir thoroughly. Allow at least 4 hours between coats and before launching. Two coats are recommended for best results. If thinning is necessary use denatured alcohol only. It should be used for cleaning brushes and equipment as well.

PRECAUTIONARY STATEMENTS

HAZARDS TO HUMANS AND DOMESTIC ANIMALS. CAUTION!

Contains copper. May be fatal if swallowed. Avoid breathing vapor, dust or spray mist. Do not get in eyes, on skin or clothing. In case of contact, flush eyes immediately with plenty of water and wash skin with soap and water. Avoid contamination of food and feed products.

Note: When product is used in confined areas, wear a pesticide respirator jointly approved by the Mining Enforcement and Safety Administration (formerly the U.S. Bureau of Mines) and the National Institute for Occupational Safety and Health under the provisions of 30 CFR 11.

ENVIRONMENTAL HAZARDS

Do not contaminate water by cleaning of equipment or disposal of wastes.

PHYSICAL HAZARDS

Combustible. Keep away from heat and flame.

DIRECTIONS FOR USE

It is a violation of Federal law to use this product in a manner inconsistent with its labeling.

Fiberglass—New fiberglass bottoms must be dewaxed using #551 Epoxy Thinner or a suitable paint thinner or detergent wash. Prime with either #B370 or #375 Epoxy Fiberglass Primer. On surfaces already painted and in good condition, sand to desired smoothness. Surfaces in poor condition should be stripped and treated as if new surface.

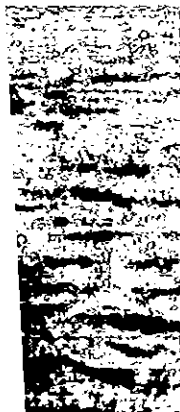
Wood—This paint can be applied directly to new wood bottoms after sanding smooth. Previously painted bottoms on which the old paint is in good condition may be recoated after sanding off all loose dirt. Where old paint is loose and flaking in large areas, strip it off and proceed as for new unpainted work.

Metal—Bring new metal to bright finish and prime with two coats of either #B374 Epoxy Red Lead or #407 Shipbottom primer. On previously painted surfaces, loose or flaking spots in the old coating should be cleaned down to bright metal by wire brushing, power sanding or sandblasting and immediately spot-primed. At least one additional coat should be applied to these spots before finish coating.

STORAGE AND DISPOSAL

Close container after each use. Do not reuse container. Destroy when empty.

WENT
oxide* 77.2%
WNTS 2.36%
total
oxide) 12.4%



E.P.A. Registration #7995-27
E.P.A. Est. #7995-MA-1

RULE PAINT & CHEMICAL, INC., GLOUCESTER, MA U.S.A. 01930